

Flight Procedures Cover Page	Task Action: FLIGHT CHECK	Task Type: IAP	Estimated Chart Date: 09/05/2024	APWS Task ID: DBF338741ADE4AF79FE8241FF512C06F	APWS Project ID: 23921A01C420462DB5E3AE0800F73880
Procedure: RNAV (GPS) RWY 14 AMDT 1		Enroute: NO	Specialist: Milligan, Walker		Agreement Number:
Airport ID: 6A2			Airport City: GRIFFIN		State: GA
Facility ID:	Facility Type:	Flight Inspection Remark Type: New FC Slot			
<div>Procedure Comments:</div> <div>ACTIVE DATA USED FOR AIRPORT AND RUNWAY.</div> <div>ADDED NEW CONTROLLING OBSTACLE - CLEARS T-NOTAM 2/1602.</div> <div>CONTACT DAVID DANNER, AJV-A421, 405-954-5077.</div> <div>QUALITY 20 CHECKED</div> <div>QUALITY 41 CHECKED</div>					

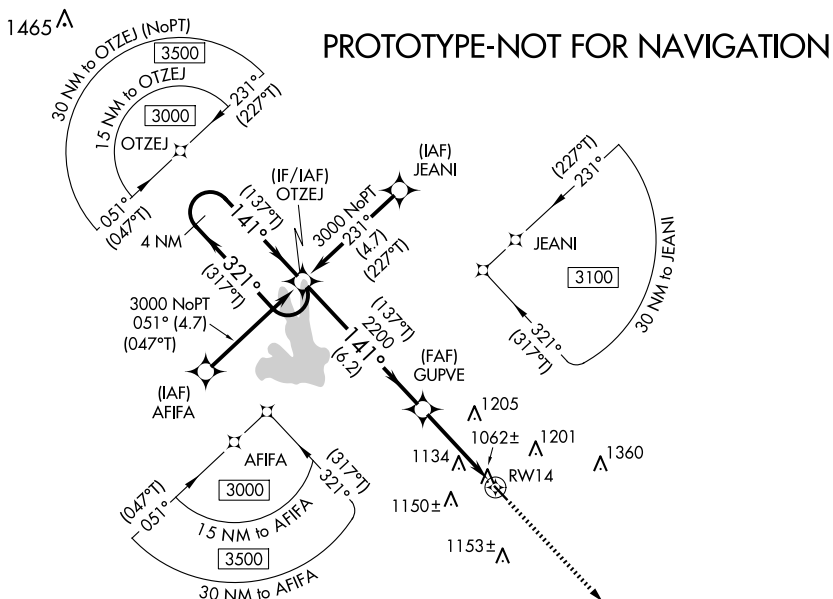
FIPC BASIC FORM							
PROCEDURE: RNAV (GPS) RWY 14 AMDT 1			AIRPORT NAME: GRIFFIN-SPALDING COUNTY		AIRPORT ID: K6A2	SPECIAL CONTROL NO: AG-06-114-24	
FAC ID: K6A214.01		CITY: GRIFFIN			ST: GA	ORIG CHART DATE: 09/05/2024	
DFL TYPE: PROC/W	THIRD PARTY: <input type="checkbox"/> YES	EST. TIME ON SITE: 0.4	REIMB. NUMBER:		PTS TASK ID: DBF338741ADE4AF79FE8241FF512C06F		
PREFLIGHT NOTES							
REVIEWER:					DATE:		
COMMENTS:					CHECK ONE:		
					<input type="checkbox"/> FLT CK REQ <input type="checkbox"/> NFCR <input type="checkbox"/> REJECT		
							YES
					CPV COMPLETE?		X
PROCEDURE RESULTS							
INSPECTION DATE: 10/16/2024		CREW #: VN426	N #: N67	INSTRUMENT PROCEDURE STATUS: <input checked="" type="checkbox"/> SAT <input type="checkbox"/> SAT W/CHANGES <input type="checkbox"/> UNSAT		ARINC CODING: <input checked="" type="checkbox"/> SAT <input type="checkbox"/> SAT/GOLD <input type="checkbox"/> UNSAT	
FLIGHT INSPECTOR SIGNATURE: robert e williams @ 10/16/2024 13:32			PRINTED NAME: WILLIAMS, ROBERT EMIL			NOTAM INITIATED? <input type="checkbox"/> YES <input checked="" type="checkbox"/> NO	
FLIGHT INSPECTOR REMARKS: Griffin-Spalding County, Griffin, GA, RNAV (GPS) RWY 14, AMDT 1. SAT AMDT Changes – LNAV mins raised 40 feet due to controlling obstacle. IAF changed from PECAT NDB to AFIFA fix. CRC changed to 7B32D7BF - FPAP LAT/LONG CHANGE. ADMIN changes.							
IN-FLIGHT OBSTACLE REPORT							
OBSTRUCTION ID #:	COORDINATES OR LOCATION:		GNSS ALTITUDE (MSL):		BAROMETRIC ALTITUDE (MSL):		HEIGHT ABOVE GROUND LEVEL:

FIG

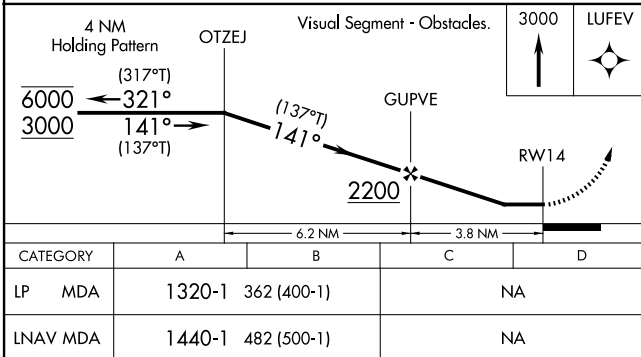
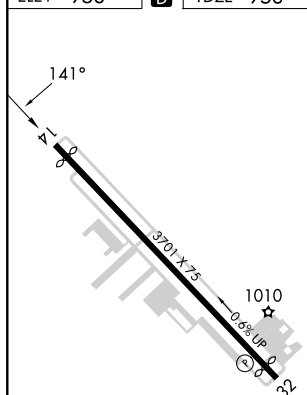
RNAV (GPS) RWY 14
GRIFFIN-SPALDING COUNTY (6A2)

MISSED APPROACH: Climb to 3000 direct LUFEV and hold.

UNICOM
123.075 (CTAF) **L**



TDZE 958



GRIFFIN-SPALDING COUNTY (6A2)

RNAV (GPS) RWY 14

WAAS CH 70429 W14A	APP CRS 141°	Rwy Idg 3201 TDZE 958 Apt Elev 958
--	------------------------	---

RNAV (GPS) RWY 14

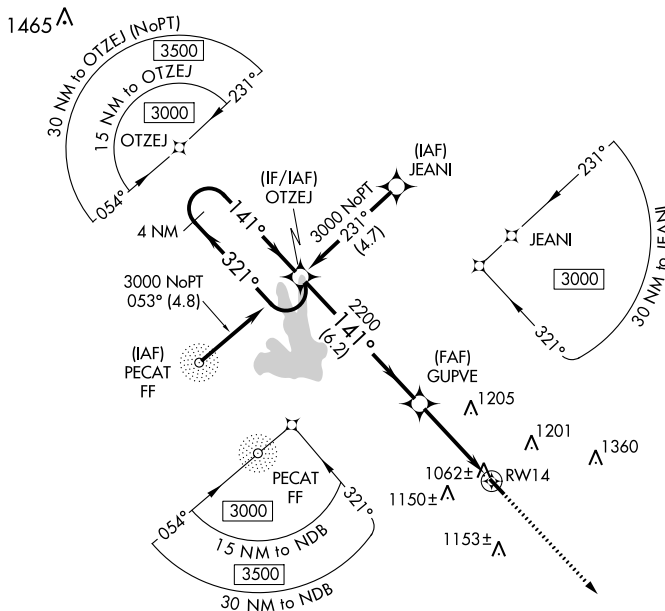
GRIFFIN-SPALDING COUNTY (6A2)

RNP APCH.

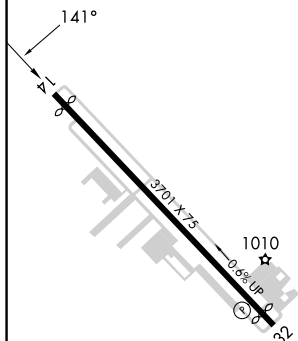
T When local altimeter setting not received, use Atlanta Rgnl Falcon Fld altimeter setting and increase all MDA 60 feet. Rwy 14 helicopter visibility reduction below 1 SM NA. Procedure NA at night.

MISSED APPROACH: Climb to 3000 direct LUFEV and hold.

AWOS-3 119.750	ATLANTA APP CON 128.575 343.675	CLNC DEL 128.575 343.675	UNICOM 123.075 (CTAF) ①
--------------------------	---	------------------------------------	-----------------------------------



ELEV 958	D	TDZE 958
----------	----------	----------



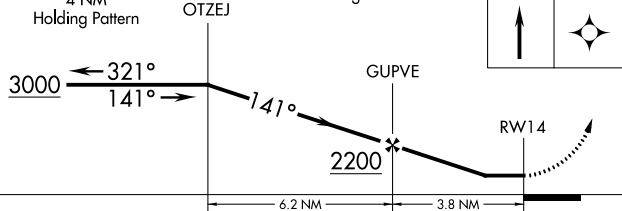
REIL Rwy 14 and 32 **L**
MIRL Rwy 14-32 **L**

4 NM
Holding Pattern

Visual Segment - Obstacles.

3000

LUFEV



CATEGORY	A	B	C	D
LP MDA	1320-1	362 (400-1)	NA	
LNAV MDA	1400-1	442 (500-1)	NA	

GRIFFIN, GEORGIA

Orig-F 18JUL19

33°14'N-84°16'W

GRIFFIN-SPALDING COUNTY (6A2)

RNAV (GPS) RWY 14

SE-4, 10 AUG 2023 to 07 SEP 2023

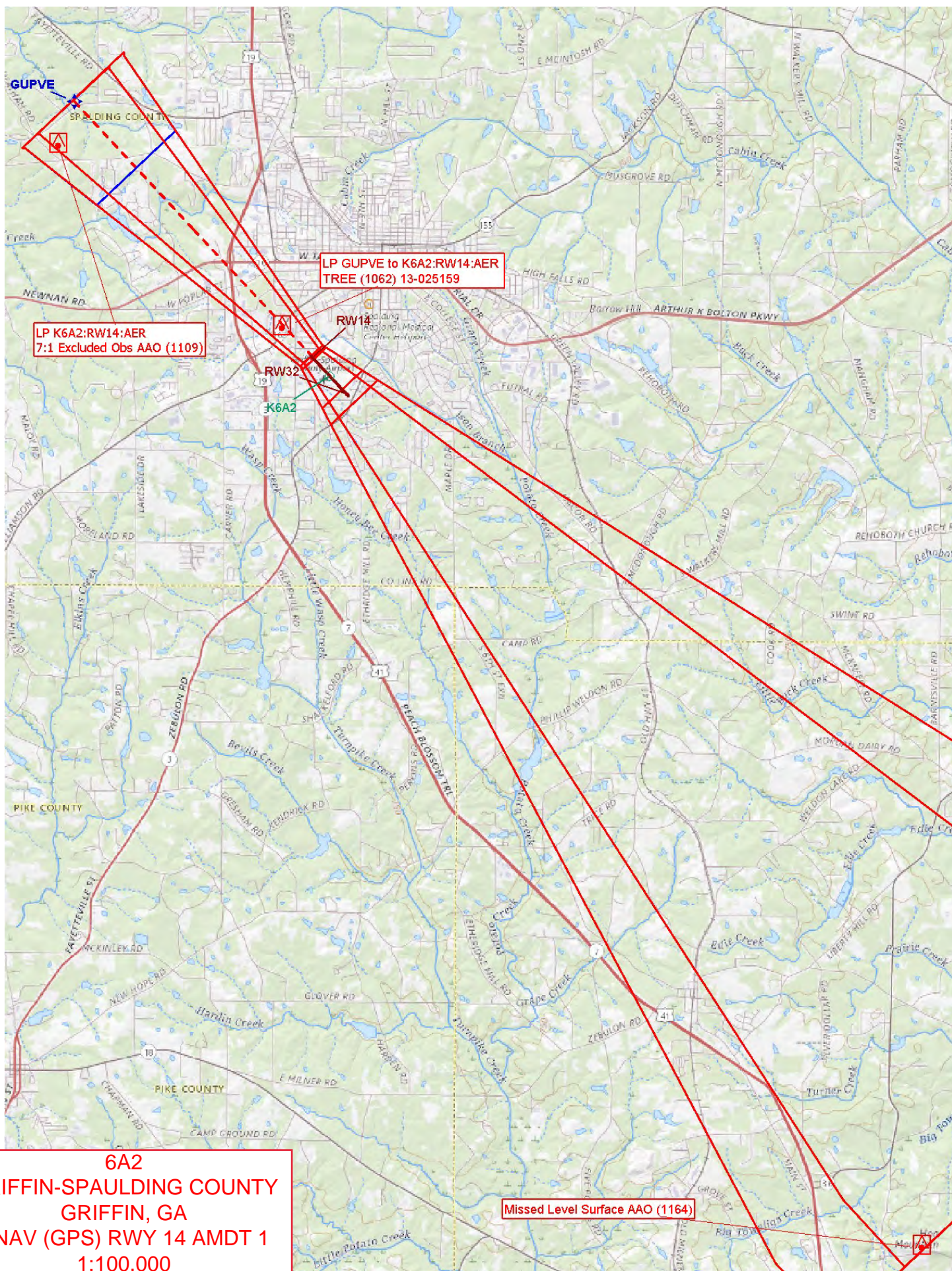
TAA Straight-In 051 CW 231 Stepdown
TOWER (1465) 13-000951

TAA Left Base 231 CW 321
TOWER (2049) 13-001674

TAA Right Base 321 CW 051
TAA Straight-In 051 CW 231
TOWER (2480) 13-002691

TAA Right Base 321 CW 051 Stepdown
TOWER (1422) 13-001568

6A2
GRIFFIN-SPAULDING COUNTY
GRIFFIN, GA
RNAV (GPS) RWY 14 AMDT 1
1:700,000
TAA



LP GUPVE to K6A2:RW14:AER
TREE (1062) 13-025159

LP K6A2:RW14:AER
7:1 Excluded Obs AAO (1109)

6A2
GRIFFIN-SPAULDING COUNTY
GRIFFIN, GA
RNAV (GPS) RWY 14 AMDT 1
1:100,000
LP

Missed Level Surface AAO (1164)

