

FIPC BASIC FORM									
PROCEDURE: VOR Z OR TACAN Z RWY 31 AMDT 10				AIRPORT NAME: GENERAL DOWNING - PEORIA INTL		AIRPORT ID: KPIA		SPECIAL CONTROL NO: BP-09-019-24	
FAC ID: PIA			CITY: PEORIA			ST: IL		ORIG CHART DATE: 12/26/2024	
DFL TYPE: PROC/A	THIRD PARTY: <input type="checkbox"/> YES	EST. TIME ON SITE: 0.4	REIMB. NUMBER: AC0721		PTS TASK ID: DA87EBAC1FDD4E5F96D6D492E4A8AC6B				
PREFLIGHT NOTES									
REVIEWER:						DATE:			
COMMENTS:						CHECK ONE:			
						<input type="checkbox"/> FLT CK REQ <input type="checkbox"/> NFCR <input type="checkbox"/> REJECT			
								YES	NO
						CPV COMPLETE?		X	
PROCEDURE RESULTS									
INSPECTION DATE: 10/10/2024		CREW #: VN329	N #: N77	INSTRUMENT PROCEDURE STATUS: <input checked="" type="checkbox"/> SAT <input type="checkbox"/> SAT W/CHANGES <input type="checkbox"/> UNSAT			ARINC CODING: <input type="checkbox"/> SAT <input type="checkbox"/> SAT/GOLD <input type="checkbox"/> UNSAT		
FLIGHT INSPECTOR SIGNATURE: glen b freeman @ 10/10/2024 16:31				PRINTED NAME: FREEMAN, GLEN BURSON				NOTAM INITIATED? <input type="checkbox"/> YES <input checked="" type="checkbox"/> NO	
FLIGHT INSPECTOR REMARKS: BP-09-019-24, GENERAL DOWNING - PEORIA INTL, PEORIA, IL. VOR Z OR TACAN Z RWY 31, AMDT 10, completed SAT as proposed.									
IN-FLIGHT OBSTACLE REPORT									
OBSTRUCTION ID #:	COORDINATES OR LOCATION:		GNSS ALTITUDE (MSL):		BAROMETRIC ALTITUDE (MSL):		HEIGHT ABOVE GROUND LEVEL:		

Flight Procedures Cover Page	Task Action: FLIGHT CHECK	Task Type: IAP	Estimated Chart Date: 12/26/2024	APWS Task ID: DA87EBAC1FDD4E5F96D6D492E4A8AC6B	APWS Project ID: 85463E38555E450292288BEC0052B34B
Procedure: VOR Z OR TACAN Z RWY 31 AMDT 10		Enroute: NO	Specialist: Young, Silvia		Agreement Number:
Airport ID: KPIA			Airport City: PEORIA		State: IL
Facility ID: PIA	Facility Type: VORTAC	Flight Inspection Remark Type: New FC Slot			
<div>Procedure Comments:</div> <div>ACTIVE DATA USED FOR KPIA AIRPORT AND RWYS.</div> <div>CONTACT CASIMIR TABAKA 405.202.7857</div> <div><div>QUALITY 33 CHECKED</div><div>QUALITY 10 CHECKED</div></div>					


VORTAC PIA	APP CRS	Rwy Idg	10104
115.2	281°	TDZE	650
Chan 99		Apt Elev	661

VOR Z or TACAN Z RWY 31
GENERAL DOWNING/PEORIA INTL (PIA)

DME required.

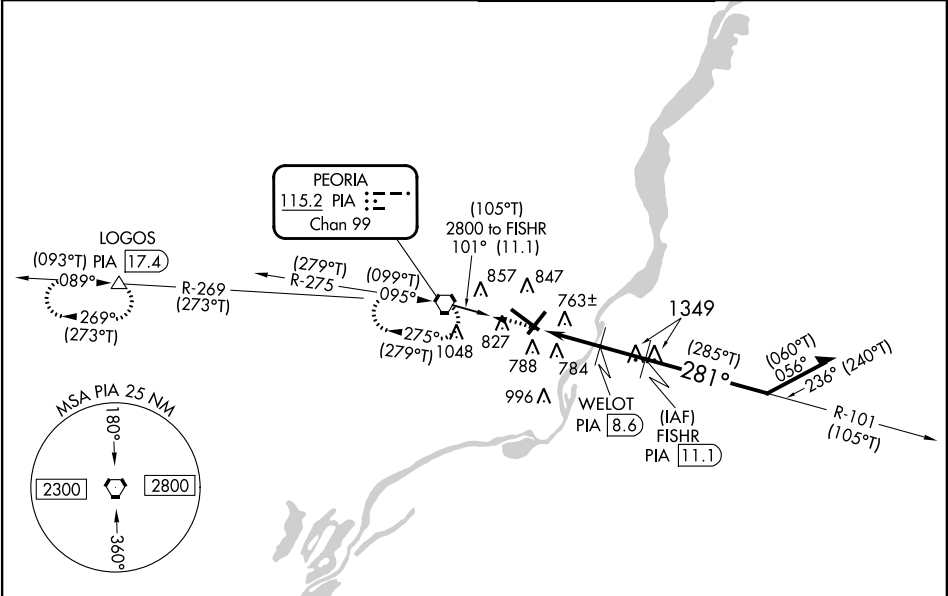
▼ Rwy 31 helicopter visibility reduction below RVR 5000 NA.
▲ Inop table does not apply. Straight-in and Circling Rwy 31 NA at night. Circling Rwy 13 NA at night. When local altimeter setting not received, use AAA altimeter setting; increase all MDAs 100 feet and Circling visibility Cat C/D ½ SM.

MALSRL

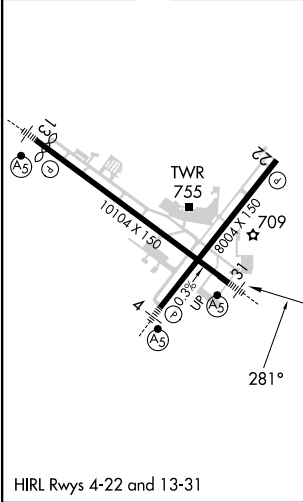


MISSED APPROACH: Climb to 2800 direct PIA VORTAC and hold, continue climb-in-hold to 2800. (TACAN aircraft continue on PIA VORTAC R-269 to LOGOS/PIA 17.4 DME and hold west, right turn, 089° inbound).

ATIS 126.1 282.2	SAINT LOUIS APP CON 125.8 269.2	PEORIA TOWER 124.0 353.85	GND CON 121.85 348.6
---------------------	------------------------------------	------------------------------	-------------------------

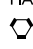


ELEV 661	D	TDZE 650
----------	---	----------

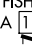


PROTOTYPE-NOT FOR NAVIGATION


2800 PIA



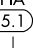
FISHR PIA 11.1



WELOT PIA 8.6



PIA 5.1



1800 TCH 55

2600

2800

3.5 NM

2.5 NM

3.00°

107°

281°

101°

285°

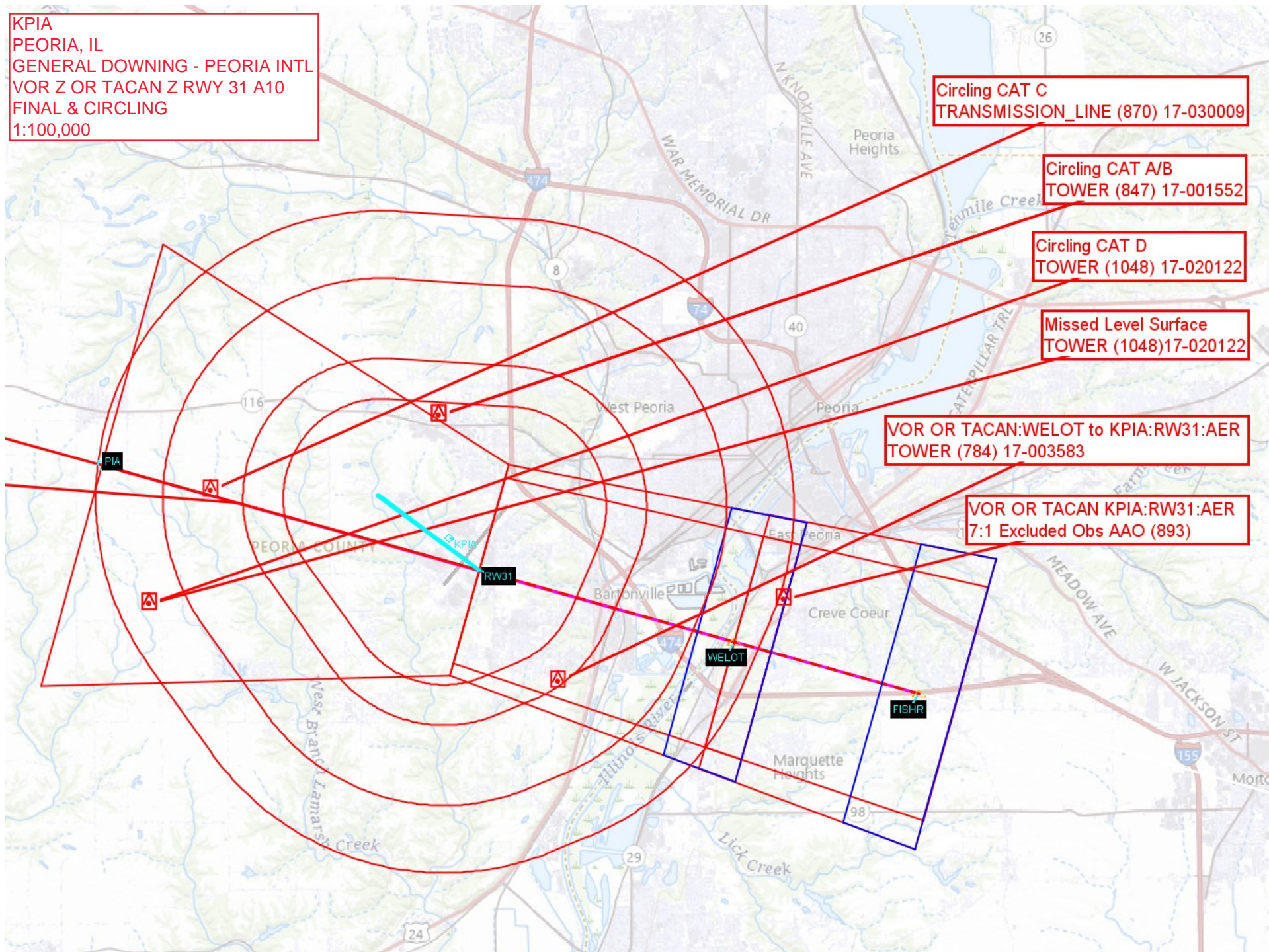
105°

Remain within 10 NM

CATEGORY	A	B	C	D
S-31	1040/55 390 (400-1)		1040/60 390 (400-1¼)	
CIRCLING	1160-1 499 (500-1)		1180-1½ 519 (600-1½)	1400-2¼ 739 (800-2¼)

EC-3 16 MAY 2024 to 13 JUN 2024

KPIA
PEORIA, IL
GENERAL DOWNING - PEORIA INTL
VOR Z OR TACAN Z RWY 31 A10
FINAL & CIRCLING
1:100,000



KPIA
PEORIA, IL
GENERAL DOWNING - PEORIA INTL
VOR Z OR TACAN Z RWY 31 A10
FEEDER, PT, FINAL, VOR MA & HOLDING, CIH
1:500,000

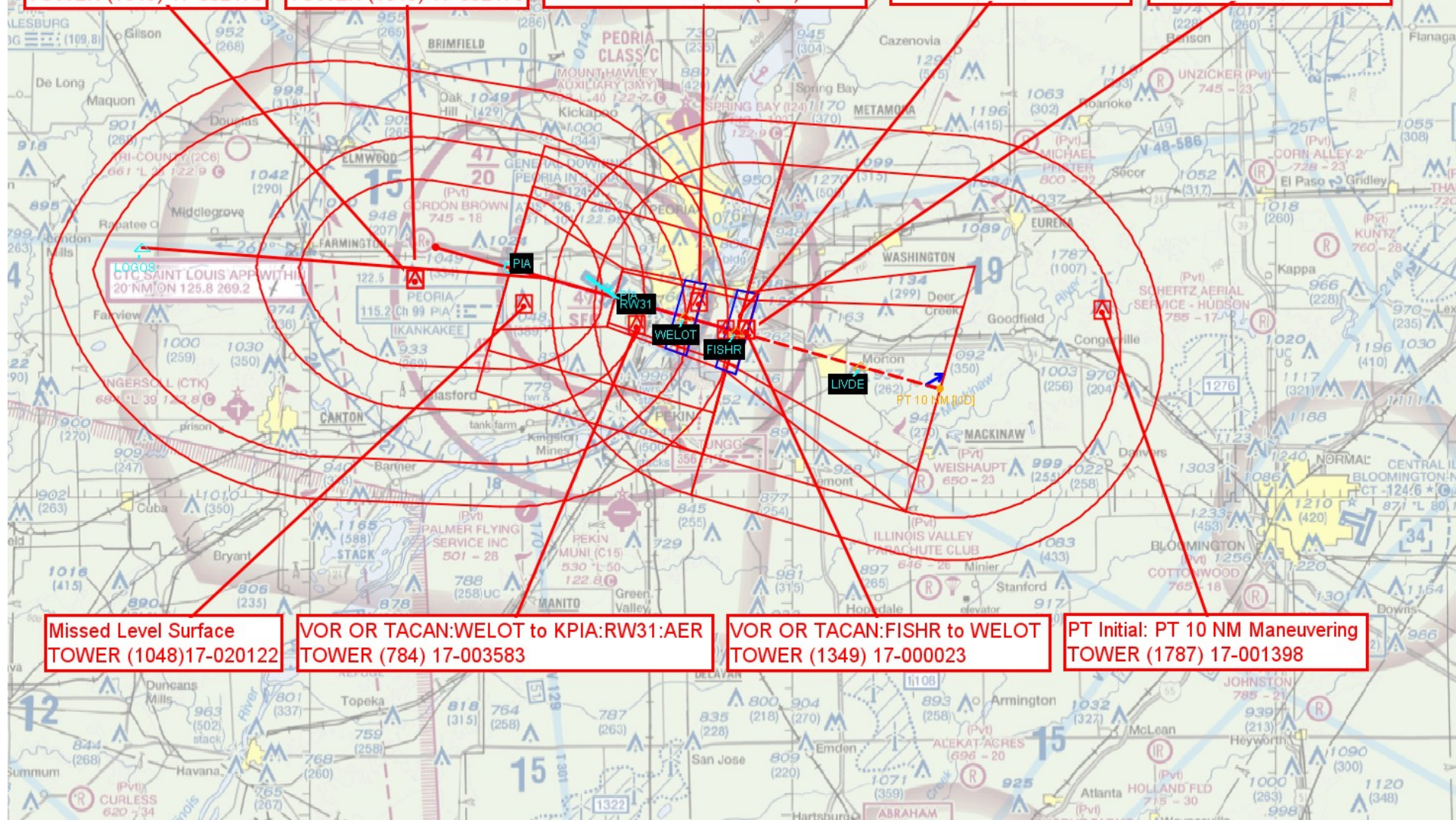
PIA Holding
TOWER (1049) 17-002473

PIA CIH
TOWER (1049) 17-002473

VOR OR TACAN KPIA:RW31:AER
7:1 Excluded Obs AAO (893)

PIA:VORTAC to FISHR
TOWER (1349) 17-001253

PT 10 NM to FISHR
TOWER (1349) 17-000023



KPIA
PEORIA, IL
GENERAL DOWNING - PEORIA INTL
VOR Z OR TACAN Z RWY 31 A10
FEEDER, PT FINAL, TACAN MA & HOLDING 200KIAS AND 230KIAS
1:500,000

LOGOS 200K Holding
TOWER (1004) 17-002537

TACAN Missed Level Surface
TOWER (1049) 17-002473

VOR OR TACAN KPIA:RW31:AER
7:1 Excluded Obs AAO (893)

PIA:VORTAC to FISHR
TOWER (1349) 17-001253

PT 10 NM to FISHR
TOWER (1349) 17-000023

LOGOS 230K HOLDING
TOWER (1000) 17-027983

VOR OR TACAN:WELOT to KPIA:RW31:AER
TOWER (784) 17-003583

VOR OR TACAN:FISHR to WELOT
TOWER (1349) 17-000023

PT Initial: PT 10 NM Maneuvering
TOWER (1787) 17-001398

