

Flight Procedures Cover Page	Task Action: P-NOTAM	Task Type: IAP	Estimated Chart Date: 09/05/2024	APWS Task ID: D9C1C93B4854467BB43D97529821D7CC	APWS Project ID: 511F4BD6CE214A96A35A6A932F89A00F
Procedure: RNAV (GPS) Y RWY 30 AMDT 2A		Enroute: NO	Specialist: Feronti, Tia		Agreement Number:
Airport ID: KGYG			Airport City: GARY/CHICAGO		State: IN
Facility ID:	Facility Type:	Flight Inspection Remark Type:			
<div>Procedure Comments:</div> <div>PROCESSED IAW TECHNICAL SUPPORT GROUP (AJF-17) MEMO DATED 07/07/2021 GUIDANCE FOR PROCEDURAL CHANGES REQUIRING FLIGHT INSPECTION/VALIDATION.</div> <div>CITY NAME CHANGED.</div> <div>CONTACT DAVID DANNER, AJV-A420, 405-954-5077.</div> <div><div>QUALITY 41 CHECKED</div><div>QUALITY 32 CHECKED Digitally signed by PABLO ORTIZ-JR Jun 04, 2024</div></div>					

OLD

GARY, INDIANA

AL-748 (FAA)

23222

WAAS CH <b>78323</b> <b>W30A</b>	APP CRS <b>306°</b>	Rwy ldg TDZE Apt Elev	<b>7959</b> <b>591</b> <b>597</b>
--	------------------------	-----------------------------	---

# RNAV (GPS) Y RWY 30

GARY/CHICAGO INTL (GYY)

RNP APCH - GPS.



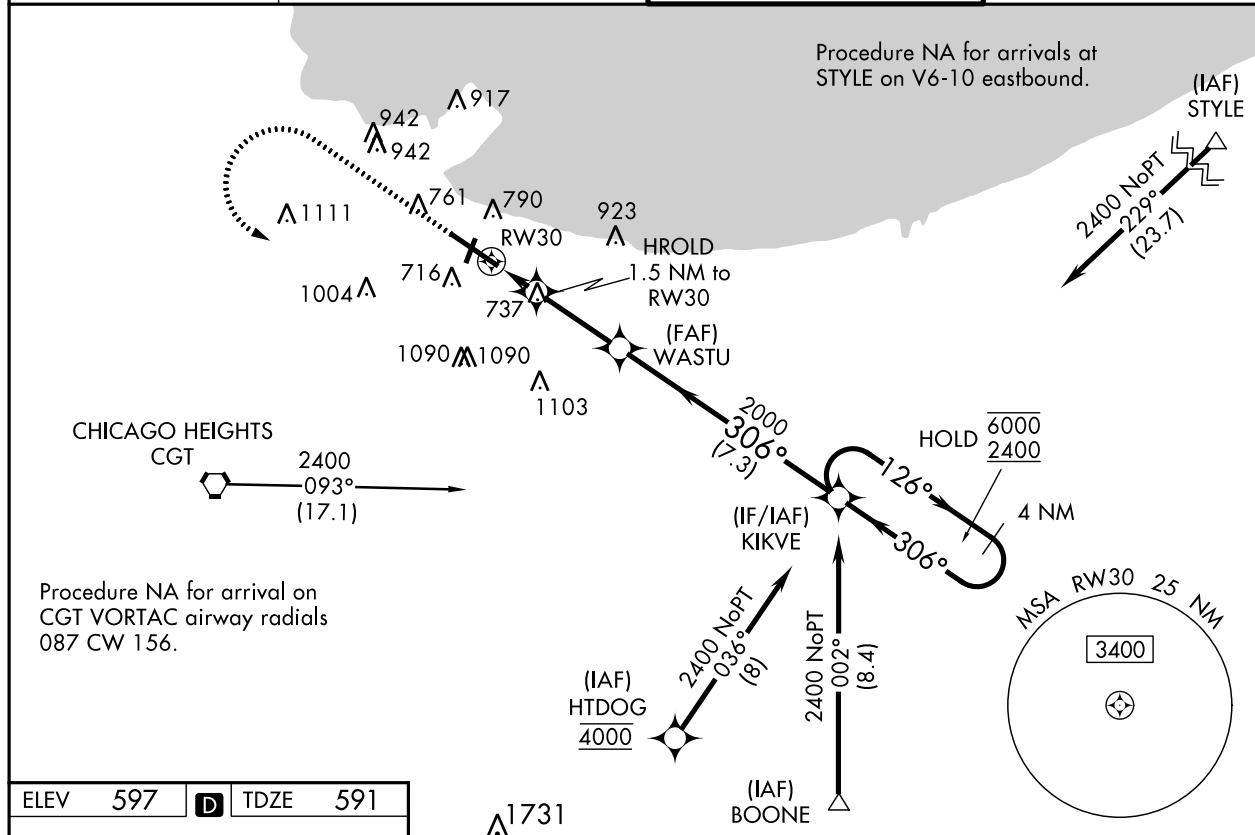
For uncompensated Baro-VNAV systems, LNAV/VNAV NA below -16°C or above 54°C. For inop ALS, increase LNAV Cat C and D visibility to RVR 6000.  
\*\* RVR 1800 authorized with use of FD or AP or HUD to DA (NA when using Chicago Midway Intl altimeter setting).

MALSR

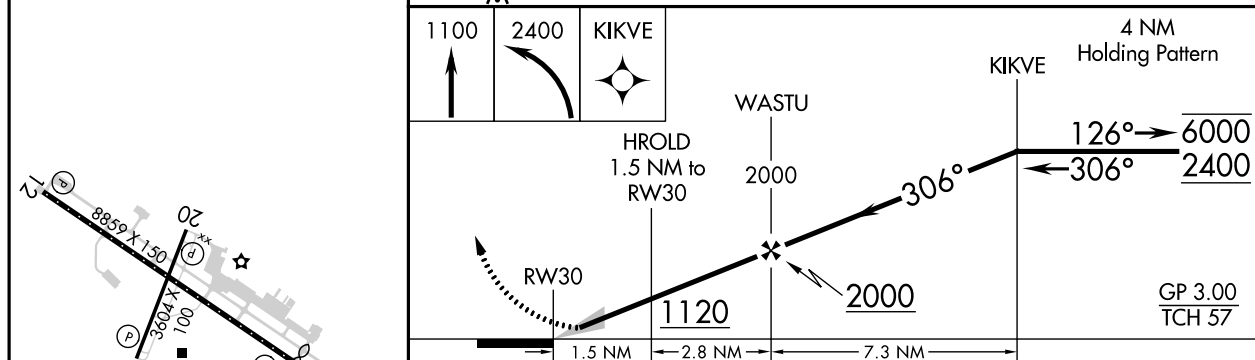


MISSED APPROACH:  
Climb to 1100 then climbing left turn to 2400 direct KIKVE and hold.

ATIS <b>134.575</b>	CHICAGO APP CON <b>133.1 285.6</b>	GARY TOWER ★ <b>125.6 (CTAF) 0</b>	GND CON <b>121.9</b>
------------------------	---------------------------------------	---------------------------------------	-------------------------



ELEV 597	<b>D</b>	TDZE 591
----------	----------	----------



CATEGORY	A	B	C	D
LPV DA**		791/24	200 (200-½)	
LNAV/VNAV DA		991/35	400 (400-⅝)	
LNAV MDA	1000/24	409 (500-½)	1000/40	409 (500-¾)
<b>C</b> CIRCLING	1160-1 563 (600-1)	1180-1 583 (600-1)	1400-2¼ 803 (900-2¼)	1420-2¾ 823 (900-2¾)

REIL Rwy 2, 12 and 20 **L**  
HIRL Rwy 12-30 **L**  
MIRL Rwy 2-20 **L**

GARY, INDIANA  
Amdt 2 17JUN21

41°37'N-87°25'W

# RNAV (GPS) Y RWY 30

OLD

EC-2, 22 FEB 2024 to 21 MAR 2024

EC-2, 22 FEB 2024 to 21 MAR 2024