

Flight Procedures Cover Page	Task Action: FLIGHT CHECK	Task Type: IAP	Estimated Chart Date: 06/12/2025	APWS Task ID: D98460162F9F44F9B4E6829DD3650D60	APWS Project ID: 5CA0BE1DD9D84A38A11BA24BBF0EB1E1
Procedure: RNAV (GPS) RWY 2 AMDT 3A		Enroute: NO	Specialist: Johnson, Timothy		Agreement Number:
Airport ID: KMSY			Airport City: NEW ORLEANS		State: LA
Facility ID:	Facility Type:	Flight Inspection Remark Type: New FC Slot			
<div>Procedure Comments: ACTIVE DATA USED.</div> <div>CIRCLING CAT B NEW CONTROLLING OBSTACLE: 222 MSL STACK (22-068030) (1A) 295742.31N/0901605.76W. RAISES CIRCLING CAT B MDA TO 540/HAA 536.</div> <div>LNAV NEW CONTROLLING OBSTACLE: 222 MSL STACK (22-068030) (1A) 295742.31N/0901605.76W. MAINTAIN CURRENT MINS.</div> <div>CLEARs T-NOTAM 4/0767.</div> <div>CONTACT: DAVID DANNER (405) 954-5077.</div> <div><div>QUALITY 9 CHECKED BEGUE</div><div>QUALITY 10 CHECKED</div></div>					

WAAS CH <b>49220</b> <b>W02A</b>	APP CRS <b>016°</b>	Rwy Idg <b>7002</b> TDZE <b>2</b> Apt Elev <b>3</b>
--	------------------------	---

## RNAV (GPS) RWY 2

LOUIS ARMSTRONG NEW ORLEANS INTL (MSY)

RNP APCH - GPS.

**T** Rwy 2 helicopter visibility reduction below RVR 4000 NA. For uncompensated Baro-VNAV systems, LNAV/VNAV NA below 0°C or above 54°C.

**MISSED APPROACH:** Climb to 3000 direct PEPUE and on track 077° to SNAKI and hold.

D-ATIS <b>127.55</b>	NEW ORLEANS APP CON WEST <b>125.5 350.35</b> EAST <b>133.15 290.3</b>	NEW ORLEANS TOWER <b>119.5 254.3</b>	GND CON <b>121.9 273.525</b>	CLNC DEL <b>120.925</b>	CPDLC

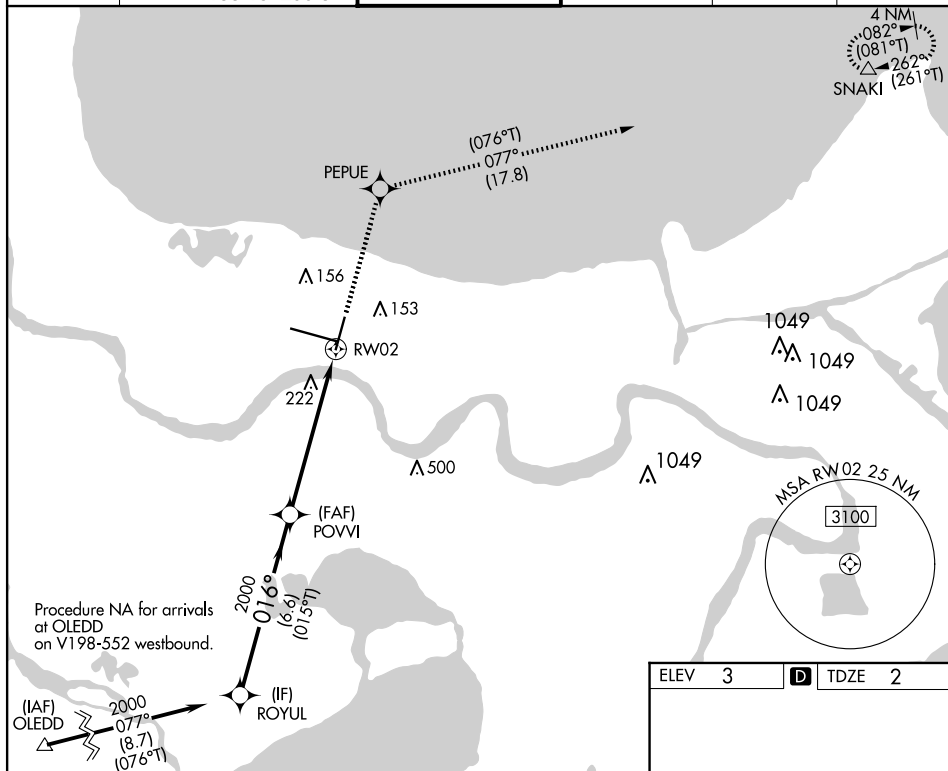
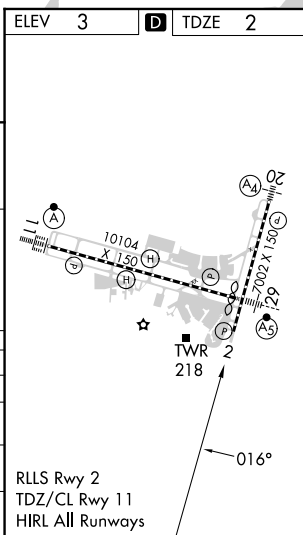


Diagram illustrating the RNAV (RNP) approach for RW02, showing a 3.00 NM glidepath not coincident with the VGS1 glidepath. The diagram includes a scale bar from 0 to 1.3 NM, a heading of 016°, and a vertical angle of 015°T. The approach is categorized as LPV DA, with a minimum descent altitude (MDA) of 480/55 and a circling minimum of 517 (600-1).



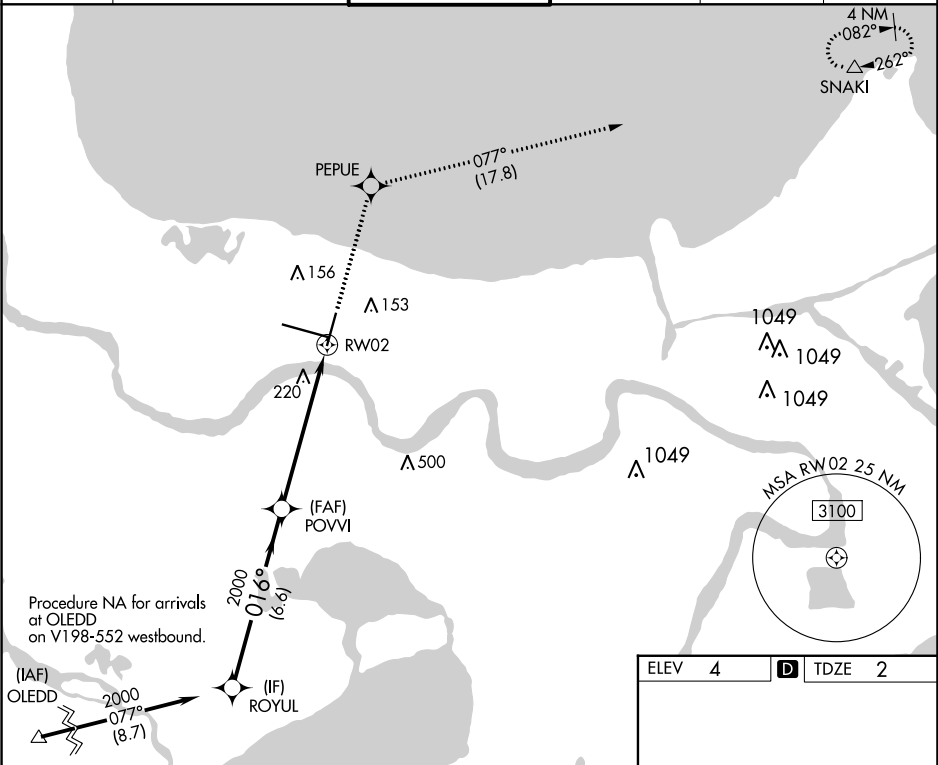
WAAS CH <b>49220</b> <b>W02A</b>	APP CRS <b>016°</b>	Rwy Idg <b>7002</b> TDZE <b>2</b> Apt Elev <b>4</b>
--	------------------------	---

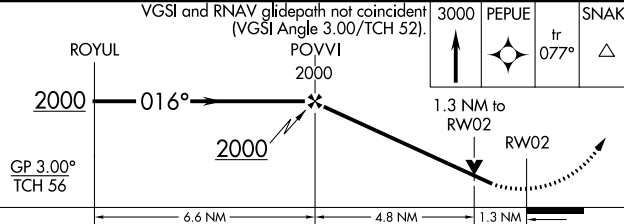
RNAV (GPS) RWY 2

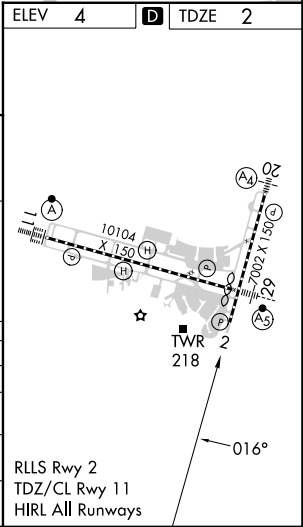
LOUIS ARMSTRONG NEW ORLEANS INTL (MSY)

RNP APCH - GPS.		MISSED APPROACH: Climb to 3000 direct PEPUE and on track 077° to SNAKI and hold.	
▼ Rwy 2 helicopter visibility reduction below RVR 4000 NA. For uncompensated Baro-VNAV systems, LNAV/VNAV NA below 0°C or above 54°C.			

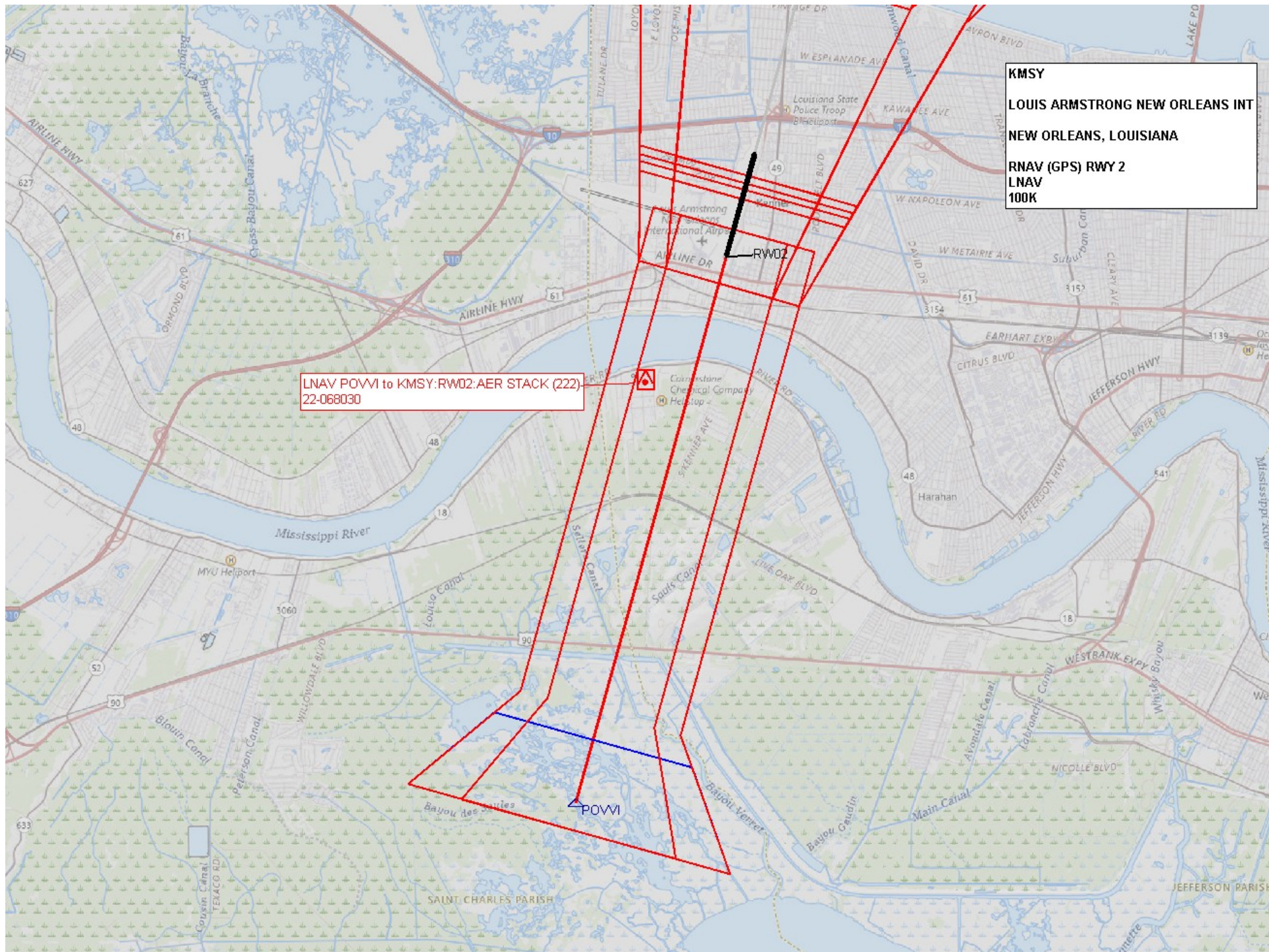
D-ATIS <b>127.55</b>	NEW ORLEANS APP CON WEST <b>125.5 350.35</b> EAST <b>133.15 290.3</b>	NEW ORLEANS TOWER <b>119.5 254.3</b>	GND CON <b>121.9 273.525</b>	CLNC DEL <b>120.925</b>	CPDLC
-------------------------	---	---	---------------------------------	----------------------------	-------



VGSI and RNAV glidepath not coincident (VGSI Angle 3.00/TCH 52).				3000	PEPUE	tr 077°	SNAKI
 <p>ROYUL</p> <p>2000</p> <p>016°</p> <p>2000</p> <p>GP 3.00° TCH 56</p> <p>6.6 NM</p> <p>4.8 NM</p> <p>1.3 NM to RW02</p> <p>RW02</p> <p>1.3 NM</p> <p>POYVI 2000</p> <p>PEPUE</p> <p>SNAKI</p>							
CATEGORY	A		B	C	D		
LPV DA	398/60		396 (400-1¼)				
LNAV/ VNAV DA	379/55		377 (400-1)				
LNAV MDA	480/55	478 (500-1)	480-1⅜ 478 (500-1⅝)				
<b>C</b> CIRCLING	520-1	516 (600-1)	580-1½ 576 (600-1½)		580-2 576 (600-2)		









**KMSY**  
**LOUIS ARMSTRONG NEW ORLEANS INT**  
**NEW ORLEANS, LOUISIANA**  
**RNAV (GPS) RWY 2**  
**CIRCLING**  
**100K**

Circling CAT A CONTROL\_TOWER (218)  
 22-002221

Circling CAT B STACK (222)  
 22-068030

Circling CAT C/D CRANE (272)  
 22-027930