

Flight Procedures Cover Page	Task Action: FLIGHT CHECK	Task Type: IAP	Estimated Chart Date: 12/26/2024	APWS Task ID: D9596C57EC174701952039C24D9CBD15	APWS Project ID: 467D1D64130B48B9B24B229622ECC28B
Procedure: RNAV (GPS) RWY 5 AMDT 2		Enroute: NO	Specialist: Hanby, William		Agreement Number:
Airport ID: KBFZ			Airport City: ALBERTVILLE		State: AL
Facility ID:	Facility Type:	Flight Inspection Remark Type: New FC Slot			
<div>Procedure Comments: PENDING DATA UTILIZED. AIRPORT IDENTIFIER CHANGED FROM 8A0 TO BFZ. RAISED TAA ALTITUDES FROM 4000 FT TO 4100 FT. CHANGED TAA STEP-DOWN ARCS FROM 15 NM TO 10 NM: RAISED TAA STEP-DOWN 10 NM ARC ALTITUDES AT OCOQY FROM 3200 FT TO 3700 FT - DUE TO EASTERN MOUNTAINOUS TERRAIN. RAISED HOLD-IN-LIEU (H-I-L) ALTITUDE FROM 3200 FT TO 3700 FT - DUE TO ALTITUDE CHANGES IN TAA. RAISED MISSED APPROACH CLIMB-TO ALTITUDE FROM 3300 FT TO 3700 FT AND ADDED C-I-H - TO MATCH H-I-L ALTITUDE. CONTACT AJV-A432 MANAGER, JOSEPH L. ZEDER 405-954-9111.</div> <div><div>Digitally signed by <b>JOSEPH L ZEDER</b> Sep 10, 2024</div><div><div>QUALITY 41 CHECKED</div><div>QUALITY 8 CHECKED</div></div></div>					

FIPC BASIC FORM								
<b>PROCEDURE:</b> RNAV (GPS) RWY 5 AMDT 2			<b>AIRPORT NAME:</b> ALBERTVILLE RGNL/THOMAS J		<b>AIRPORT ID:</b> KBFZ	<b>SPECIAL CONTROL NO:</b> AG-09-124-24		
<b>FAC ID:</b> KBFZ05.02		<b>CITY:</b> ALBERTVILLE			<b>ST:</b> AL	<b>ORIG CHART DATE:</b> 12/26/2024		
<b>DFL TYPE:</b> PROC/S	<b>THIRD PARTY:</b> <input type="checkbox"/> YES	<b>EST. TIME ON SITE:</b> 0.4	<b>REIMB. NUMBER:</b>	<b>PTS TASK ID:</b> D9596C57EC174701952039C24D9CBD15				
PREFLIGHT NOTES								
<b>REVIEWER:</b>					<b>DATE:</b>			
<b>COMMENTS:</b>					<b>CHECK ONE:</b> <input type="checkbox"/> FLT CK REQ <input type="checkbox"/> NFCR <input type="checkbox"/> REJECT			
							YES	NO
					<b>CPV COMPLETE?</b>		X	
PROCEDURE RESULTS								
<b>INSPECTION DATE:</b> 01/16/2025	<b>CREW #:</b> VN335	<b>N #:</b> N77	<b>INSTRUMENT PROCEDURE STATUS:</b> <input checked="" type="checkbox"/> SAT <input type="checkbox"/> SAT W/CHANGES <input type="checkbox"/> UNSAT		<b>ARINC CODING:</b> <input checked="" type="checkbox"/> SAT <input type="checkbox"/> SAT/GOLD <input type="checkbox"/> UNSAT			
<b>FLIGHT INSPECTOR SIGNATURE:</b> george e searles @ 01/17/2025 13:26			<b>PRINTED NAME:</b> SEARLES, GEORGE EDWARD			<b>NOTAM INITIATED?</b> <input type="checkbox"/> YES <input checked="" type="checkbox"/> NO		
<b>FLIGHT INSPECTOR REMARKS:</b>								
IN-FLIGHT OBSTACLE REPORT								
<b>OBSTRUCTION ID #:</b>	<b>COORDINATES OR LOCATION:</b>	<b>GNSS ALTITUDE (MSL):</b>	<b>BAROMETRIC ALTITUDE (MSL):</b>		<b>HEIGHT ABOVE GROUND LEVEL:</b>			

WAAS CH <b>93737</b> <b>W05A</b>	APP CRS <b>050°</b>	Rwy Idg TDZE <b>1015</b> Apt Elev <b>1032</b>	<b>6114</b>
--	------------------------	---	-------------

RNAV (GPS) RWY 5

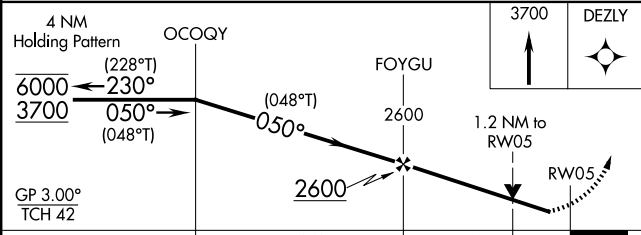
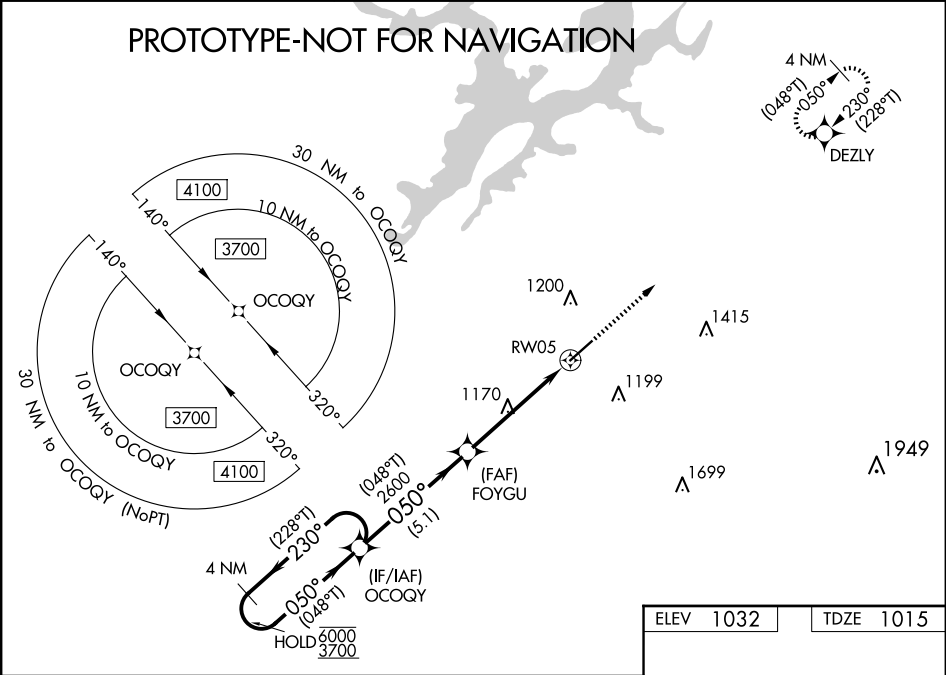
ALBERTVILLE RGNL/THOMAS J BRUMLIK FLD (B'F'Z)

RNP APCH - GPS.

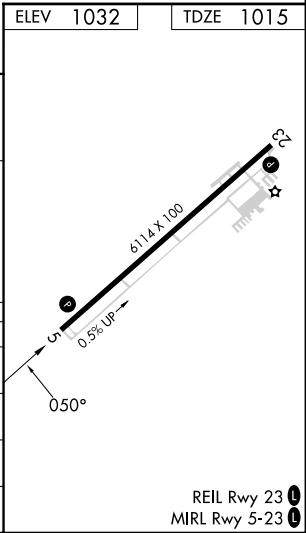
Rwy 5 helicopter visibility reduction below ¾ SM NA. For uncompensated Baro-VNAV systems, LNAV/VNAV NA below -17°C or above 54°C.

MISSED APPROACH:  
Climb to 3700 direct  
DEZLY and hold,  
continue climb-in-hold  
to 3700.

AWOS-3PT <b>119.575</b>	BIRMINGHAM APP CON <b>125.45 279.65</b>	UNICOM <b>123.0 (CTAF) 0</b>
----------------------------	--	---------------------------------



CATEGORY	A	B	C	D
LPV DA	1265-¾ 250 (300-¾)			
LNAV/VNAV DA	1332-7/8 317 (300-7/8)			
LNAV MDA	1420-1 405 (400-1)		1420-1½ 405 (400-1½)	
CIRCLING	1480-1 448 (500-1)	1500-1 468 (500-1)	1500-1½ 468 (500-1½)	1680-2 648 (700-2)





## **Federal Aviation Administration**

---

---

# **Memorandum**

Date: August 22, 2023

To: Instrument Flight Procedures Service Providers

From: Eric S. Parker, Acting Manager, Flight Technologies and Procedures Division

Subject: Waiver to Order 8260.58, United States Standard for Performance Based Navigation (PBN) Instrument Procedure Design, on Appendix C PBN Transition to ILS/GLS/LPV Final.

---

---

This memorandum waives FAA Order 8260.58, United States Standard for Performance Based Navigation (PBN) Instrument Procedure Design, Appendix C, paragraph 2.a.(1), for procedures that meet all of the following guidelines:

1. The final approach segment length is no longer than 37,400 feet.
2. The glidepath angle is 3.00 degrees or more.
3. The Threshold Crossing Height is between 40 feet and 60 feet.
4. No PBN segment/s intersect the final approach course extended closer than 12,300 feet plus Distance to Turn Anticipation (DTA) from the PFAF.

This memorandum remains in effect until rescinded. Please direct all inquiries to the Flight Procedures and Airspace Group, Standards Section at 405-954-1139 or 9-AWA-AVS-AFS420@faa.gov.

**FIG**  
**Placeholder**

---

**Replace with FIG post QC 1 Review**

---

ALBARTVILLE, ALABAMA

AL-5925 (FAA)

21336

WAAS CH <b>93737</b> <b>W05A</b>	APP CRS <b>050°</b>	Rwy Idg TDZE Apt Elev	<b>6114</b> <b>1015</b> <b>1032</b>
--	------------------------	-----------------------------	---

# RNAV (GPS) RWY 5

ALBARTVILLE RGNL/THOMAS J BRUMLIK FLD (8A0)

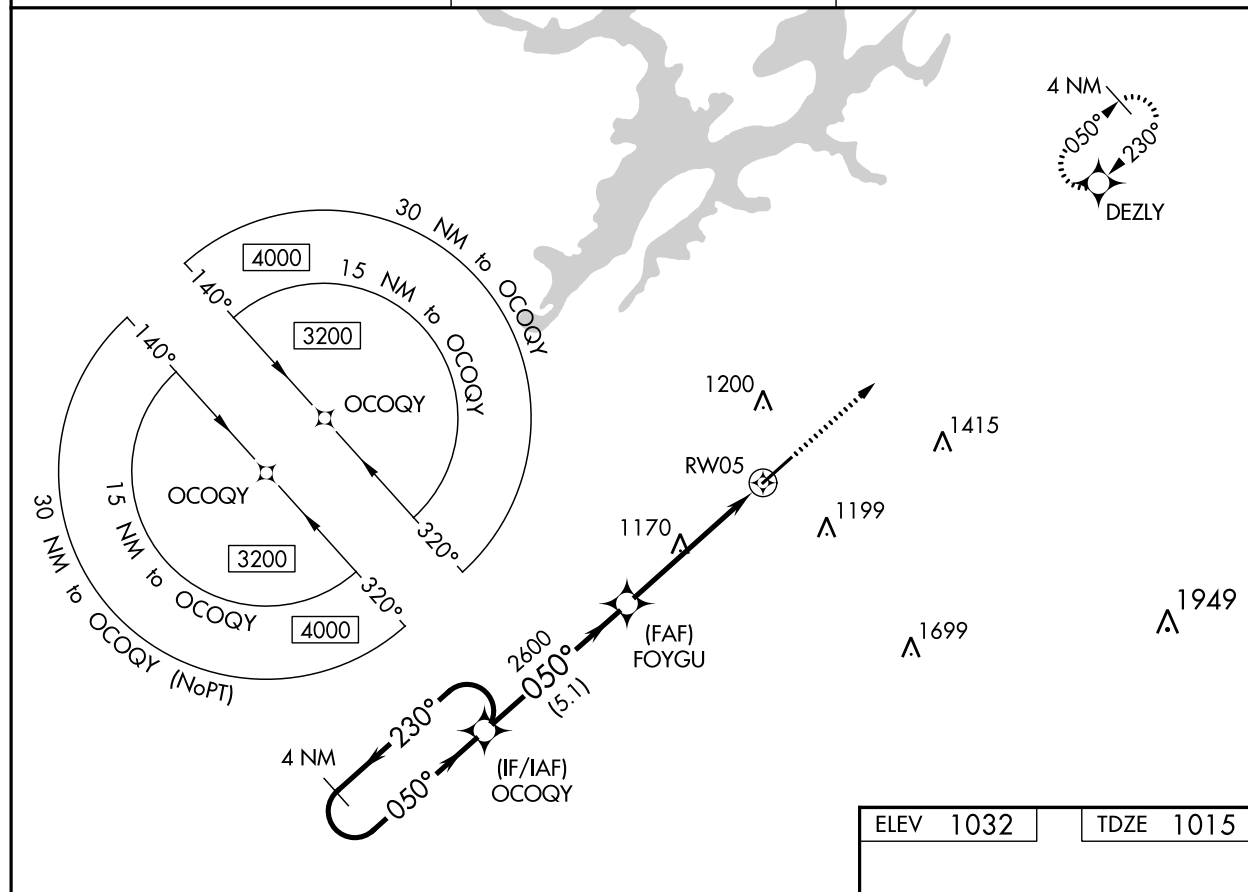
- ▼** DME/DME RNP-0.3 NA. When local altimeter setting not received, use Huntsville Intl-Carl T Jones Fld altimeter setting and increase all DA 139 feet and all MDA 140 feet; increase LPV all Cats, LNAV/VNAV all Cats and LNAV Cats C and D visibility ½ mile. Increase Circling Cat C visibility ¼ mile and Cat D ½ mile. For uncompensated Baro-VNAV systems, LNAV/VNAV NA below -17°C (2°F) or above 54°C (130°F). Baro-VNAV and VDP NA when using Huntsville Intl-Carl T Jones Fld altimeter setting. Helicopter visibility reduction below ¾ SM NA.
- ▲**

MISSED APPROACH:  
Climb to 3300 direct  
DEZLY and hold.

AWOS-3PT  
**119.575**

BIRMINGHAM APP CON  
**125.45 279.65**

UNICOM  
**123.0 (CTAF) 0**



4 NM Holding Pattern

OCOQY

FOYGU

3300

DEZLY

3200

230°

050°

GP 3.00°

TCH 42

2600

050°

2600

5.1 NM

3.7 NM

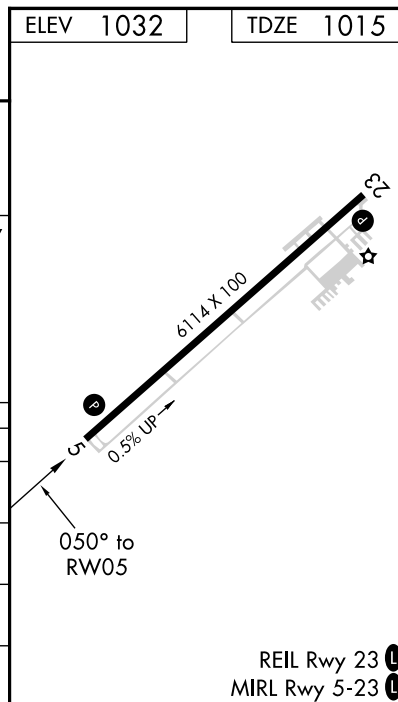
1.2 NM

\* LNAV only

\* 1.2 NM to RW05

RW05

CATEGORY	A	B	C	D
LPV DA	1265-7⁄8 250 (300-7⁄8)			
LNAV/VNAV DA	1332-1 1⁄8 317 (300-1 1⁄8)			
LNAV MDA	1420-1 405 (400-1)		1420-1 1⁄8 405 (400-1 1⁄8)	
CIRCLING	1480-1 448 (500-1)	1500-1 468 (500-1)	1500-1 1⁄2 468 (500-1 1⁄2)	1680-2 648 (700-2)



ALBARTVILLE, ALABAMA  
Amdt 1 02APR15

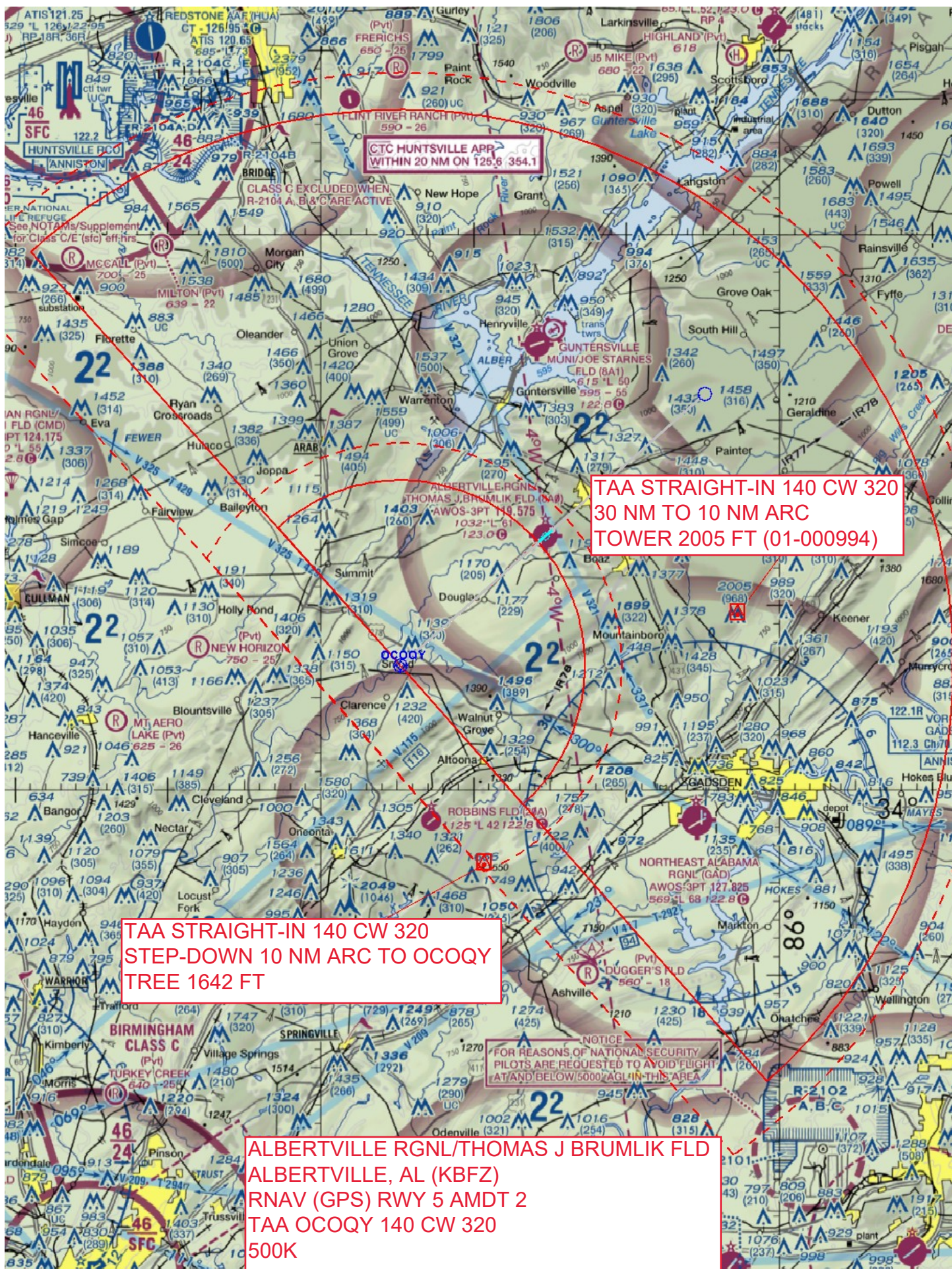
ALBARTVILLE RGNL/THOMAS J BRUMLIK FLD (8A0)  
34°14'N-86°15'W

# RNAV (GPS) RWY 5

SE-4, 13 JUN 2024 to 11 JUL 2024

SE-4, 13 JUN 2024 to 11 JUL 2024





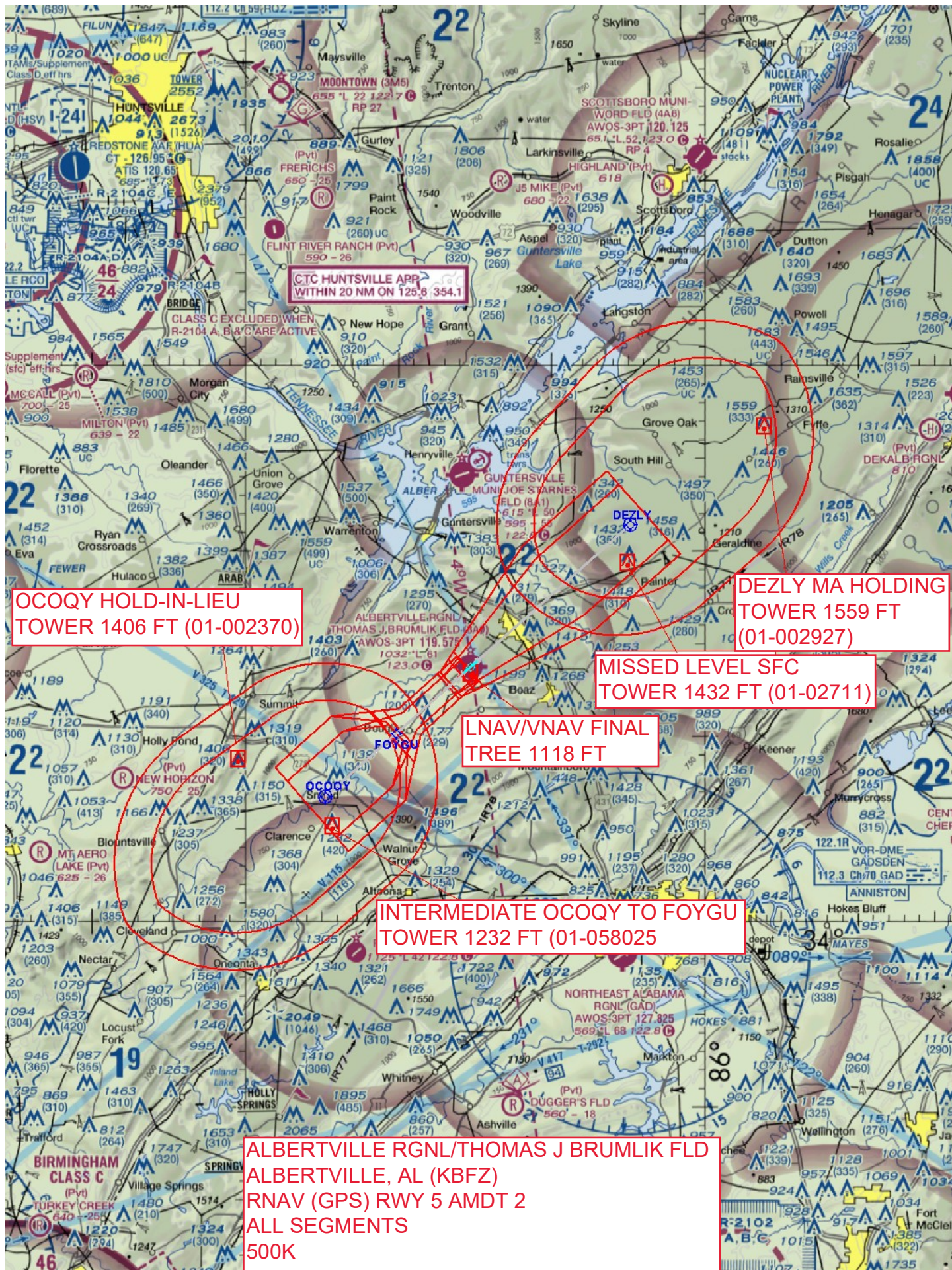


ALBERTVILLE RGNL/THOMAS J BRUMLIK FLD  
ALBERTVILLE, AL (KBFZ)  
RNAV (GPS) RWY 5 AMDT 2  
TAA OCOQY 320 CW 140  
500K

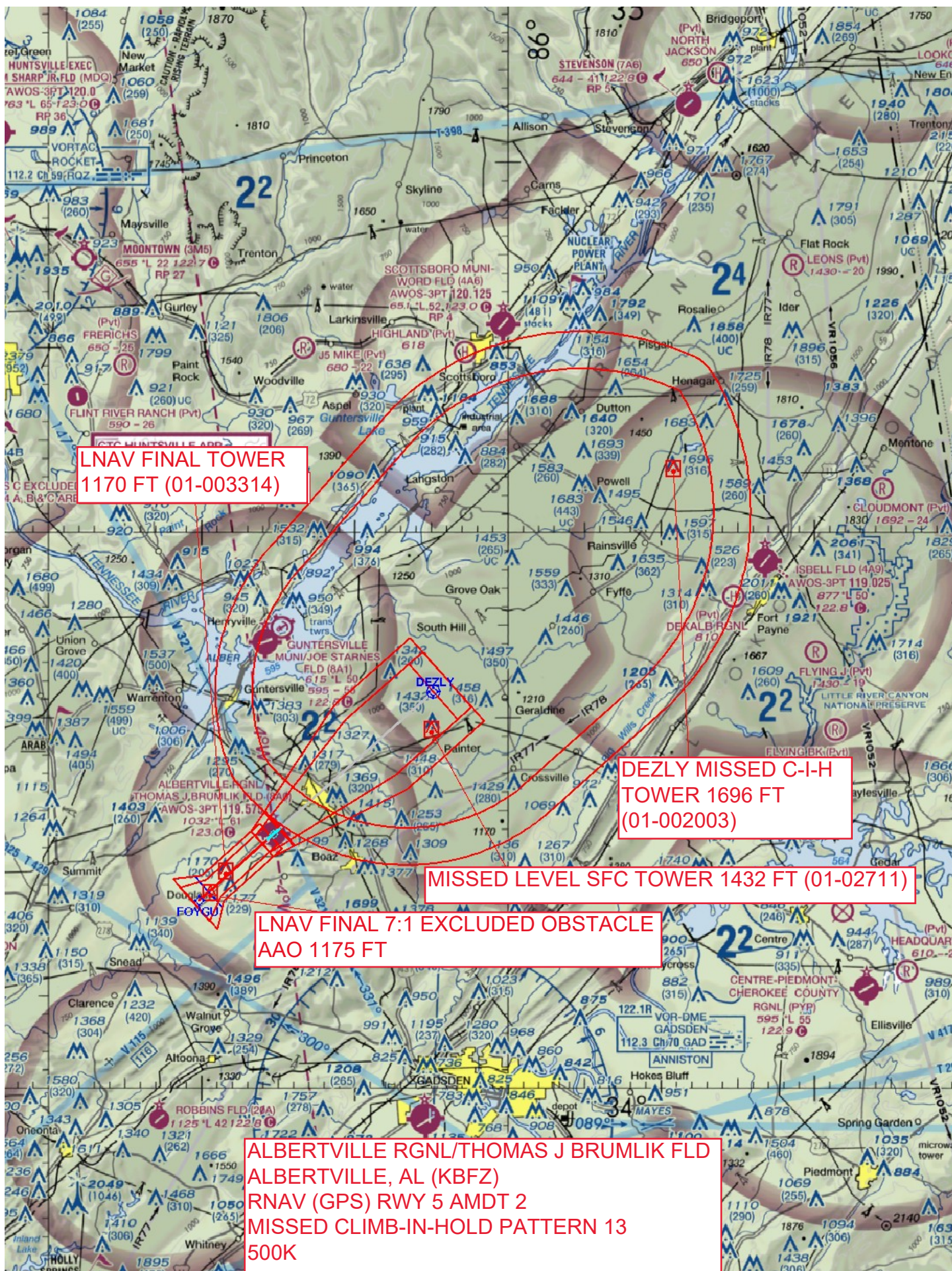
TAA STRAIGHT-IN 320 CW 140  
30 NM TO 10 NM ARC  
TOWER 2065 FT (01-000992)

TAA STRAIGHT-IN 320 CW 140  
STEP-DOWN 10 NM ARC TO OCOQY  
TREE 1642 FT

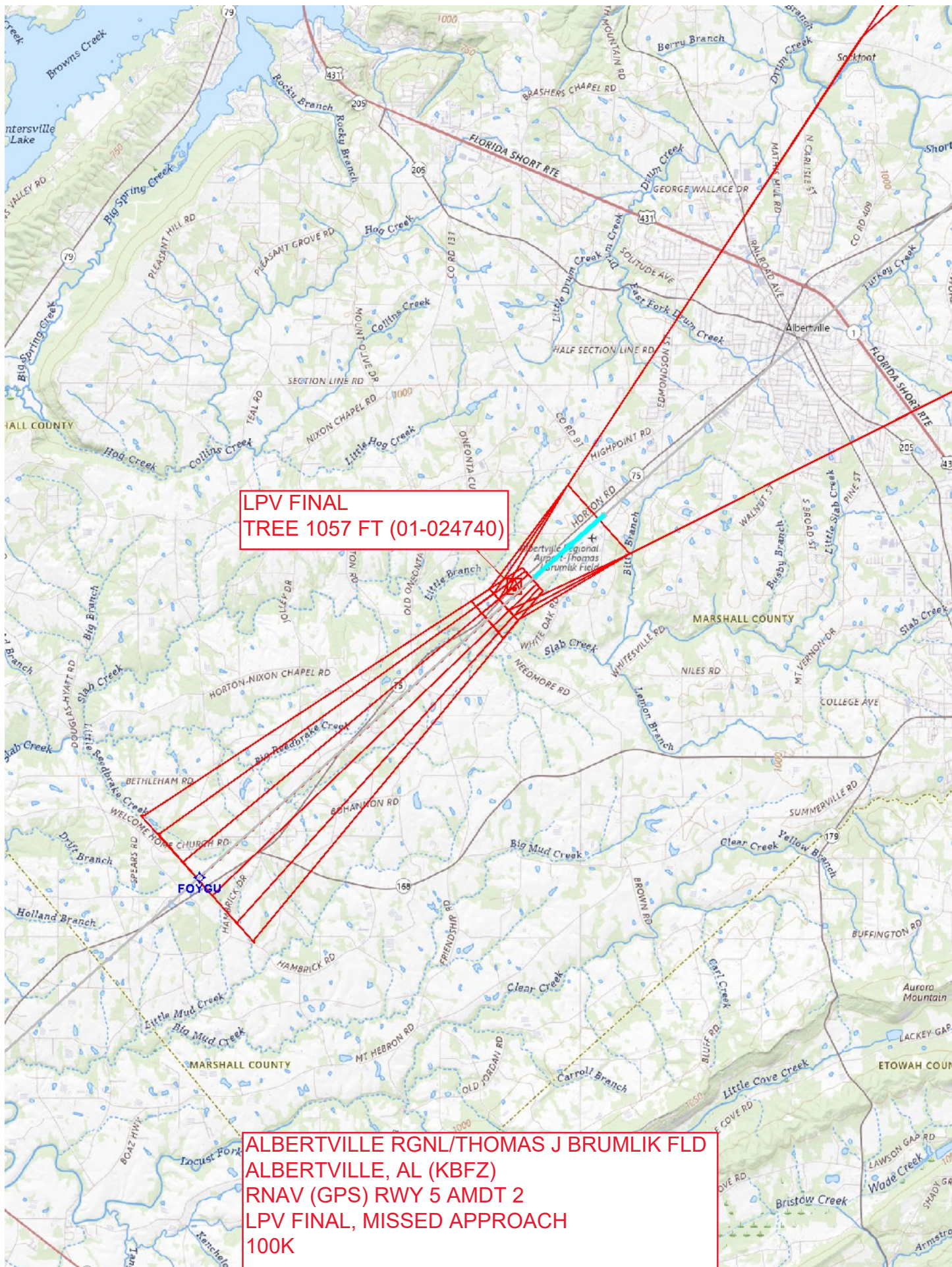








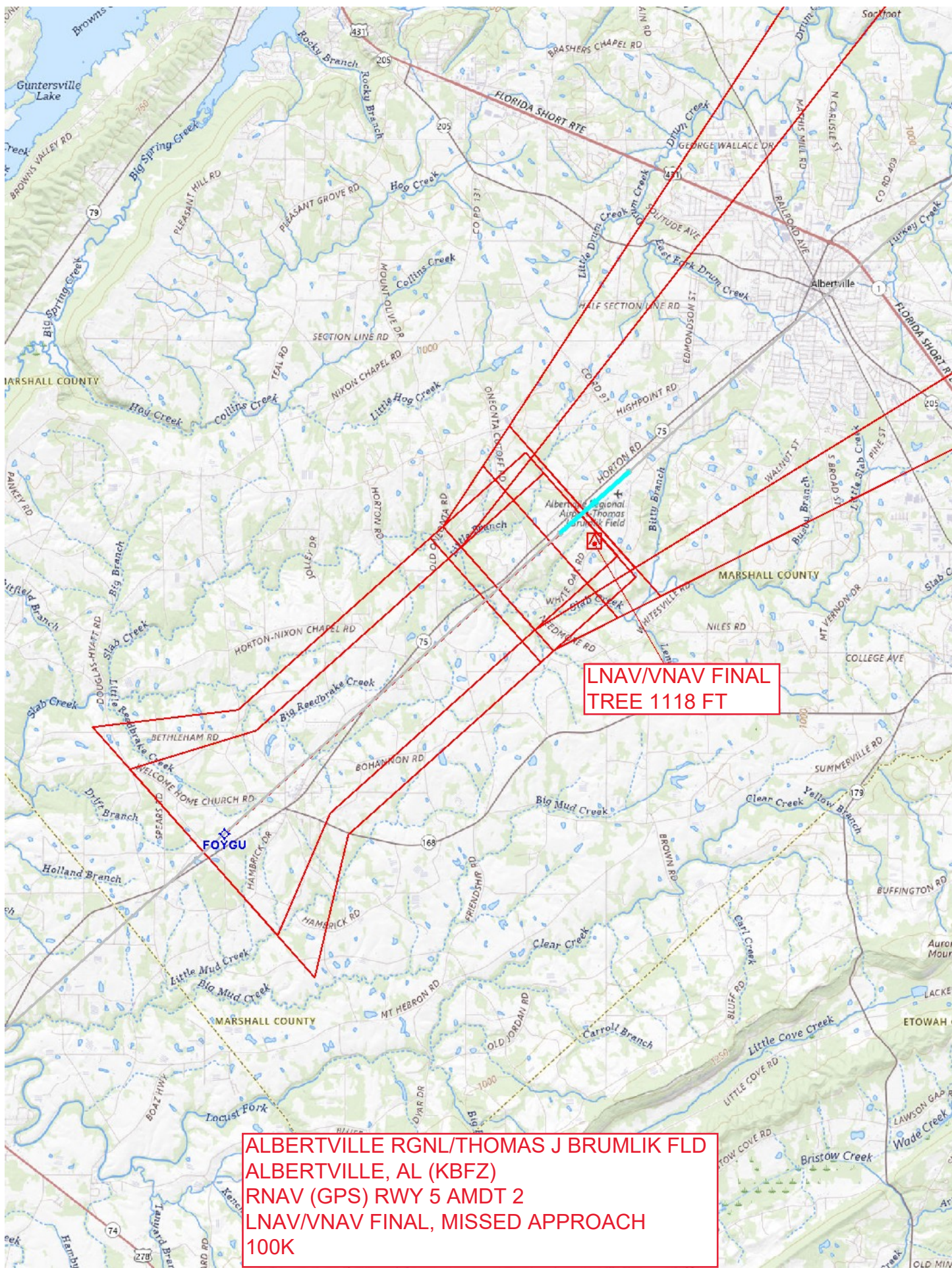




LPV FINAL  
TREE 1057 FT (01-024740)

ALBERTVILLE RGNL/THOMAS J BRUMLIK FLD  
ALBERTVILLE, AL (KBZF)  
RNAV (GPS) RWY 5 AMDT 2  
LPV FINAL, MISSED APPROACH  
100K







ALBANYVILLE RGNL/THOMAS J BRUMLIK FLD  
ALBANYVILLE, AL (KBFZ)  
RNAV (GPS) RWY 5 AMDT 2  
LNAV FINAL, CIRCLING & MISSED APPROACH  
100K

CIRCLING CAT B/C  
TOWER 1200 FT  
(01-002986)

LNAV FINAL TOWER  
1170 FT (01-003314)

CIRCLING CAT D  
TOWER 1369 FT  
(01-002649)

CIRCLING CAT A  
TREE 1177 FT

LNAV FINAL 7:1 EXCLUDED OBSTACLE  
AAO 1175 FT

