

Flight Procedures Cover Page	Task Action: P-NOTAM	Task Type: IAP	Estimated Chart Date: 10/07/2021	APWS Task ID: D8ABDCD5690F4D25B9E7A0F1B965D1CF	APWS Project ID: AEC099EC744F4FBFB2408A3514B370DF
Procedure: RNAV (GPS) RWY 27 AMDT 1D		Enroute: NO	Specialist: Thibodeaux, Charles		Agreement Number:
Airport ID: KRHI			Airport City: RHINELANDER		State: WI
Facility ID:	Facility Type:	Flight Inspection Remark Type:			
<p>Procedure Comments: P-NOTAM</p> <p>ORDER 8260.3, CHAPTER 2, NEW CIRCLING CRITERIA APPLIED.</p> <p>CONTROLLING OBSTACLE: CAT A TREE 453824.93N/0892951.06W 1789 (2C) CAT D TOWER (55-000040) 453807.00N/0892243.00W 1963 (1C)</p> <p>JASON KRETSCHMER, 405-954-4019</p> <p style="text-align: center;"><i>Digitally signed by</i> <b>JASON KRETSCHMER</b> Aug 19, 2021</p>					



WAAS CH <b>50217</b> <b>W27A</b>	APP CRS <b>271°</b>	Rwy Idg TDZE <b>1606</b> Apt Elev <b>1624</b>	<b>6799</b>
--	------------------------	---	-------------

RNAV (GPS) RWY 27

RHINELANDER-ONEIDA COUNTY (RHI)

⚠

⚠

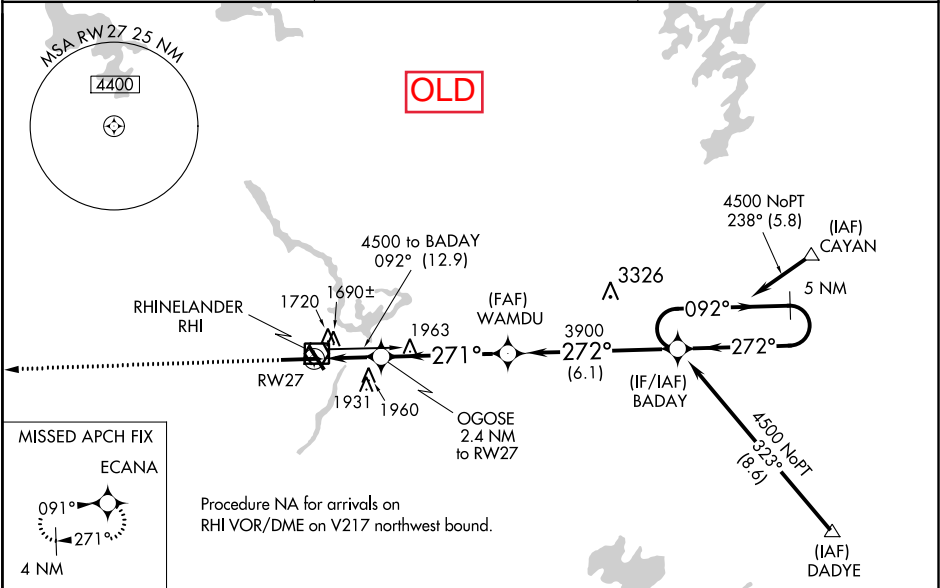
❄

-31°C

For uncompensated Baro-VNAV systems, LNAV/VNAV NA below -18°C (0°F) or above 46°C (114°F). DME/DME RNP-0.3 NA. When local altimeter setting not received, use Tomahawk altimeter setting and increase all DA and MDA 60 feet, increase LPV and LNAV/VNAV visibility all Cats, LNAV and Circling visibility Cats C/D ¼ mile. Baro-VNAV and VDP NA when using Tomahawk altimeter setting.

MISSED APPROACH:  
Climb to 4000 direct ECANA and hold.

ASOS <b>126.825</b>	MINNEAPOLIS CENTER <b>133.65 281.5</b>	UNICOM <b>123.0 (CTAF) 0</b>
------------------------	---	---------------------------------



ELEV 1624	<b>D</b>	TDZE 1606
-----------	----------	-----------

271° to RW27

4000 ECANA

\* LNAV only

OGOSE 2.4 NM to RW27

\* 1.7 NM to RW27

RW27

\* 2420

3900

3900

271°

272°

092°

4500

5 NM Holding Pattern

GP 3.00° TCH 50

CATEGORY	A	B	C	D
LPV DA	1806-3/4 200 (200-3/4)			
LNAV/VNAV DA	1983-1 1/4 377 (400-1 1/4)			
LNAV MDA	2180-1 574 (600-1)	2180-1 1/2 574 (600-1 1/2)	2180-1 3/4 574 (600-1 3/4)	2180-1 3/4 574 (600-1 3/4)
CIRCLING	2180-1 556 (600-1)	2220-1 596 (600-1)	2260-1 3/4 636 (700-1 3/4)	2260-2 636 (700-2)



