

## DME DME Assessment Results for SNAPR1 path KFL:RW10L:DER\_BEECH

### Results Summary

Flyability:	Completed
DME/DME:	Completed - No Critical DMEs
Name:	Miles CTR Carpenter
Project File:	C:\Users\Miles CTR Carpenter\Desktop\KFL: SIDs DME\KFL: SNAPR SID DME\KFL: SNAPR1 SID DME 1.1.2020.tgs
Output File:	C:\Users\Miles CTR Carpenter\Desktop\KFL: SIDs DME\KFL: SNAPR SID DME\KFL: [IFPA] SNAPR1 20210101_1054 EST\KFL:RW10L-DER_BEECH\KFL: SNAPR1 SID KFL: RW10L BEECH 20210101_1054 EST.pdf
Procedure Name:	SNAPR1
Software: DmeDmePlugin:	6.2.0
Date/Time:	01/01/2021 10:54 EST
Databases:	DTED 0max

### Failures

No Failures

### Warnings

No Warnings

### Notes For Flight Check

UPOKE TO SUMAC SEGMENT GNSS ONLY  
UPOKE TO RAJAY SEGMENT GNSS ONLY

### Flight Plan

Name	Type	Lat/Lon	Altitude (ft)	VNAV Mode	Ground Speed (kts)	Turn Type	Leg Type
KFL:RW10L:DER	WP	N26° 04' 36.451", W080° 08' 20.835"	5.5	VNAV	130	FLY_OVER	TF
MRLEE	WP	N26° 04' 42.120", W080° 00' 25.430"	1800	VNAV	200	FLY_BY	TF
REELZ	WP	N26° 04' 35.600", W079° 49' 53.760"	3000	VNAV	200	FLY_BY	TF
BEECH	WP	N25° 58' 30.370", W079° 23' 03.150"	7000	VNAV	200	FLY_BY	TF
Climb Gradient: 500.0 ft/NM up to 580.0 ft MSL 200.0 ft/NM							

### Flyability

Flight Type:	SID
Selected Airport:	KFL: [IFPA]
Climb Gradient:	500.0 ft/NM up to 580.0 ft MSL 200.0 ft/NM
Speeds:	130 at the Runway DER
	145 at the end of the VA or VI leg
	200 Ground Speed to 11000 FT
	240 Ground Speed to 18000 FT
	260 Ground Speed to 24000 FT
	340 Ground Speed above 24000 FT
Descent During a Turn:	Allowed
VNAV Mode:	Flight Plan

## DME DME Assessment Results for SNAPR1 path KLL:RW10L:DER\_BEECH

DME/DME	
RNP:	RNP 2
Flight Mode:	Manual
Line of Sight (DTED Level 0 Max):	Evaluated
Inertial Drift:	Enabled
Initial Drift:	0.558 NM
INS Drift Rate:	8.0 NM/Hour
Range Mode:	OSV
RNP Edges:	Evaluated
Min DME Range:	3.0 NM
DME Types:	DME, VOR-DME, VORTAC
DME Include Angles:	30 to 150
Critical DMEs:	Not Allowed
DoD Facilities:	Not included
Foreign Facilities:	Included
High DMEs:	Included
Low DMEs:	Included
Terminal DMEs:	Included
Flight Check DMEs:	Not selected
Higher Altitudes:	Not Evaluated
Near Maximum Altitude:	Not Evaluated
Automatic ESVs:	Enabled
Disabled DMEs:	ZEF,ZFP,ZGV,ZQA,ZTC

DME/DME (Continued)										
DMEs Used										
#	Name	Lat/Lon	MAGVAR	Range	Type	Source	Critical	Status	Time	Distance
1	VKZ	N25° 45' 06.846", W080° 09' 15.996"	4.0 W	130	H	IFPA	NO	Enabled	10 %	8.4 %
2	ZBV	N25° 42' 15.000", W079° 17' 40.000"	4.0 W	130	H	IFPA	NO	Enabled	45.8 %	48.2 %
3	FLL	N26° 04' 26.183", W080° 09' 59.192"	6.0 W	130	H	IFPA	NO	Enabled	45.3 %	45.7 %
4	DHP	N25° 47' 59.866", W080° 20' 56.526"	4.0 W	130	H	IFPA	NO	Enabled	53.1 %	53.9 %
5	PBI	N26° 40' 48.198", W080° 05' 11.359"	3.0 W	130	H	IFPA	NO	Enabled	52.8 %	53.6 %
6	ZEF	N23° 33' 20.610", W075° 51' 52.990"	5.0 W	40	L	IFPA	NO	Disabled		
7	ZFP	N26° 33' 19.250", W078° 41' 52.250"	3.0 W	130	H	IFPA	NO	Disabled		
8	ZGV	N25° 15' 27.000", W076° 18' 31.000"	5.0 W	130	H	IFPA	NO	Disabled		
9	ZQA	N25° 01' 31.860", W077° 26' 47.140"	6.0 W	130	H	IFPA	NO	Disabled		
10	ZTC	N26° 44' 05.000", W077° 22' 45.000"	5.0 W	130	H	IFPA	NO	Disabled		

Flight Check DME Selection						
Distance [NM]	Selected DMEs					Alternate
0.0						
2.4	FLL	PBI	VKZ	DHP		
4.8						
15.5	ZBV	DHP				
21.6	PBI	DHP	ZBV	FLL		
23.2	PBI	FLL				
29.1	DHP	PBI	ZBV	FLL		
32.7	PBI	VKZ	ZBV	DHP	FLL	
33.9	DHP	ZBV	PBI	FLL		
38.3	DHP	ZBV	PBI			

# DME DME Assessment Results for SNAPR1 path KFL:RW10L:DER\_BEECH

Inertial Drift Segments			
#	Start Location	End Location	Length [NM]
1	N26° 04' 36.437", W080° 08' 18.442"	N26° 04' 37.339", W080° 05' 38.616"	2.3961
2	N26° 04' 39.774", W080° 03' 00.685"	N26° 04' 36.402", W079° 51' 07.639"	10.6958
3	N26° 04' 35.600", W079° 49' 53.760"	N26° 04' 34.792", W079° 49' 50.170"	0.0555

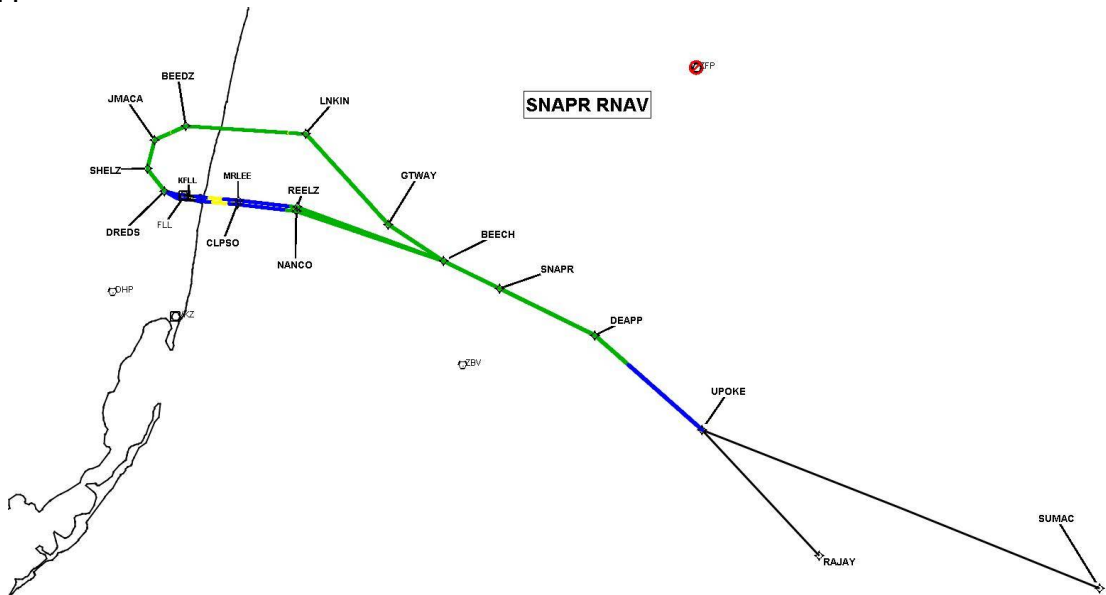
Available DMEs by Waypoints		
Waypoint Before	Waypoint After	DME List
KFL:RW10L:DER	MRLEE	VKZ, PBI, FLL, DHP
MRLEE	REELZ	DHP, ZBV
REELZ	BEECH	VKZ, PBI, FLL, DHP, ZBV

User Data Files								
#	File Name							
1	New Analysis.udt							
2	UserDMEsKFL [IFPA] SNAPR1 SID_20201020_0816 EDT.udt							
User DMEs								
#	Name	Lat/Lon	MAGVAR	Range	Elevation [ft]	Frequency	Replaces	Status
1	DHP FAA 955264-047 DHP [IFPA]	N25° 47' 59.866", W080° 20' 56.526"	4.0 W	130	5.9	113.9	DHP FAA 955264-047	
ESV:		Bearing [True]: 351.0° to 96.0° Bearing [Mag]: 355.0° to 100.0°				Arc Distance: Out to 80.0 NM Altitude: 5000.0 to 13000.0 ft		
2	PHK FAA 900991-065 PHK [IFPA]	N26° 46' 57.873", W080° 41' 29.157"	0.0 E	130	15.5	115.4	PHK FAA 900991-065	
ESV:		Bearing [True]: 110.0° to 130.0° Bearing [Mag]: 110.0° to 130.0°				Arc Distance: Out to 119.0 NM Altitude: 10000.0 to 18000.0 ft		
3	VKZ FAA 671324-58 VKZ [IFPA]	N25° 45' 06.846", W080° 09' 15.996"	4.0 W	130	10.5	117.1	VKZ FAA 671324-58	
ESV:		Bearing [True]: 84.0° to 104.0° Bearing [Mag]: 88.0° to 108.0°				Arc Distance: Out to 73.0 NM Altitude: 10000.0 to 20000.0 ft		
4	PHK FAA 900991-44 PHK [IFPA]	N26° 46' 57.873", W080° 41' 29.157"	0.0 E	130	15.5	115.4	PHK FAA 900991-44	
ESV:		Bearing [True]: 111.0° to 145.0° Bearing [Mag]: 111.0° to 145.0°				Arc Distance: Out to 65.0 NM Altitude: 3500.0 to 16000.0 ft		
5	PBI FAA 882483-45 PBI [IFPA]	N26° 40' 48.198", W080° 05' 11.359"	3.0 W	130	15.7	115.7	PBI FAA 882483-45	
ESV:		Bearing [True]: 125.0° to 164.0° Bearing [Mag]: 128.0° to 167.0°				Arc Distance: Out to 71.0 NM Altitude: 3800.0 to 16000.0 ft		
6	ZBV FAA 051542-34 ZBV [IFPA]	N25° 42' 15.000", W079° 17' 40.000"	4.0 W	130	10	116.7	ZBV FAA 051542-34	
ESV:		Bearing [True]: 286.0° to 26.0° Bearing [Mag]: 290.0° to 30.0°				Arc Distance: Out to 60.0 NM Altitude: 4000.0 to 18000.0 ft		



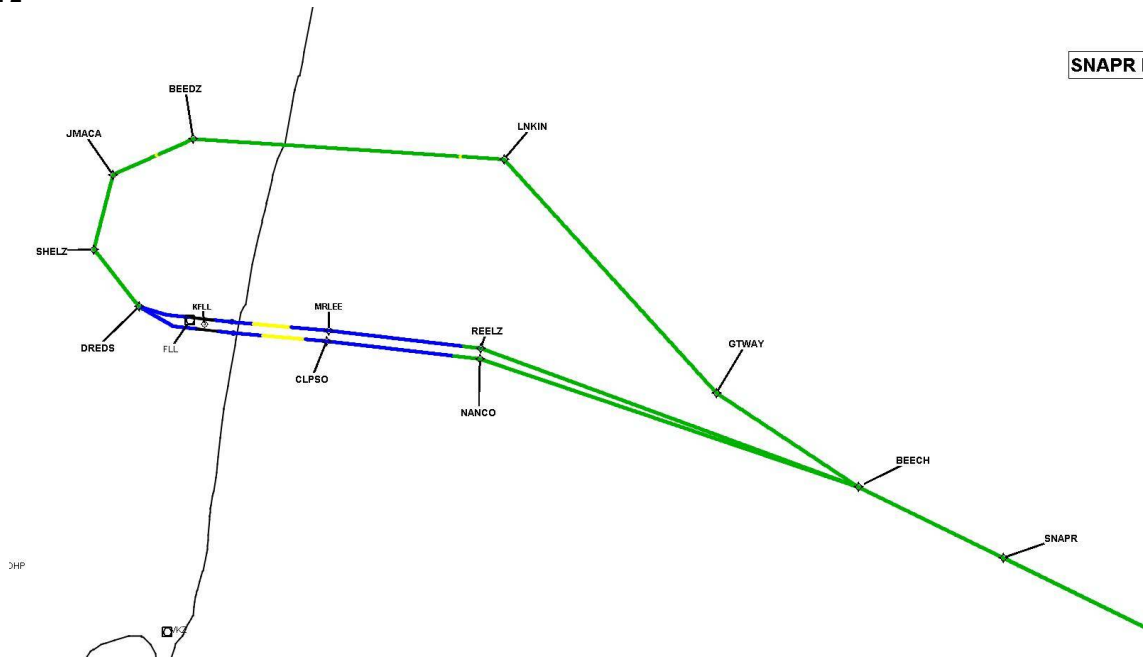
DME DME Assessment Results for SNAPR1 path KFL:RW10L:DER\_BEECH

Graphic Depiction 1



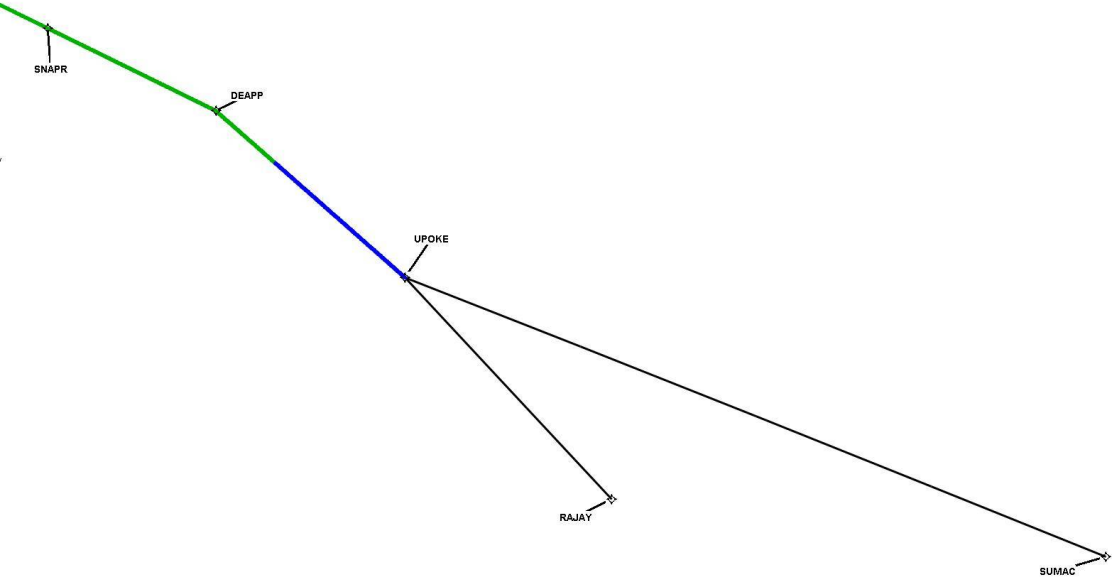
DME DME Assessment Results for SNAPR1 path KFL:RW10L:DER\_BEECH

Graphic Depiction 2



DME DME Assessment Results for SNAPR1 path KFL:RW10L:DER\_BEECH

Graphic Depiction 3



## DME DME Assessment Results for SNAPR1 path KFL:RW10R:DER\_BEECH

### Results Summary

Flyability:	Completed
DME/DME:	Completed - No Critical DMEs
Name:	Miles CTR Carpenter
Project File:	C:\Users\Miles CTR Carpenter\Desktop\KFL: SIDs DME\KFL: SNAPR SID DME\KFL: SNAPR1 SID DME_03.22.2021.tgs
Output File:	C:\Users\Miles CTR Carpenter\Desktop\KFL: SIDs DME\KFL: SNAPR SID DME\KFL: [IFPA] SNAPR1 20210322_1515 EDT\KFL:RW10R-DER_BEECH\KFL: SNAPR1 SID KFL: RW10R BEECH 20210322_1515 EDT.pdf
Procedure Name:	SNAPR1
Software: DmeDmePlugin:	6.2.0
Date/Time:	03/22/2021 15:15 EDT
Databases:	DTED 0max

### Failures

No Failures

### Warnings

No Warnings

### Notes For Flight Check

None

### Flight Plan

Name	Type	Lat/Lon	Altitude (ft)	VNAV Mode	Ground Speed (kts)	Turn Type	Leg Type
KFL:RW10R:DER	WP	N26° 03' 56.672", W080° 08' 02.339"	65	VNAV	130	FLY_OVER	TF
CLPSO	WP	N26° 04' 02.180", W080° 00' 29.660"	1800	VNAV	200	FLY_BY	TF
CUDEL	WP	N26° 03' 56.027", W079° 49' 51.842"	3000	VNAV	200	FLY_BY	TF
BEECH	WP	N25° 58' 30.370", W079° 23' 03.150"	7000	VNAV	200	FLY_BY	TF
Climb Gradient: 500.0 ft/NM up to 580.0 ft MSL 200.0 ft/NM							

### Flyability

Flight Type:	SID
Selected Airport:	KFL: [IFPA]
Climb Gradient:	500.0 ft/NM up to 580.0 ft MSL 200.0 ft/NM
Speeds:	130 at the Runway DER
	145 at the end of the VA or VI leg
	200 Ground Speed to 11000 FT
	240 Ground Speed to 18000 FT
	260 Ground Speed to 24000 FT
	340 Ground Speed above 24000 FT
Descent During a Turn:	Allowed
VNAV Mode:	Flight Plan



# DME DME Assessment Results for SNAPR1 path KLL:RW10R:DER\_BEECH

DME/DME	
RNP:	RNP 2
Flight Mode:	Manual
Line of Sight (DTED Level 0 Max):	Evaluated
Inertial Drift:	Enabled
Initial Drift:	0.558 NM
INS Drift Rate:	8.0 NM/Hour
Range Mode:	OSV
RNP Edges:	Evaluated
Min DME Range:	3.0 NM
DME Types:	DME, VOR-DME, VORTAC
DME Include Angles:	30 to 150
Critical DMEs:	Not Allowed
DoD Facilities:	Not included
Foreign Facilities:	Included
High DMEs:	Included
Low DMEs:	Included
Terminal DMEs:	Included
Flight Check DMEs:	Not selected
Higher Altitudes:	Not Evaluated
Near Maximum Altitude:	Not Evaluated
Automatic ESVs:	Not enabled
Disabled DMEs:	ZEF,ZFP,ZGV,ZQA,ZTC

DME/DME (Continued)										
DMEs Used										
#	Name	Lat/Lon	MAGVAR	Range	Type	Source	Critical	Status	Time	Distance
1	VKZ	N25° 45' 06.846", W080° 09' 15.996"	4.0 W	130	H	IFPA	NO	Enabled	11.7 %	10.2 %
2	ZBV	N25° 42' 15.000", W079° 17' 40.000"	4.0 W	130	H	IFPA	NO	Enabled	48.5 %	51 %
3	FLL	N26° 04' 26.183", W080° 09' 59.192"	6.0 W	130	H	IFPA	NO	Enabled	46.3 %	46.7 %
4	DHP	N25° 47' 59.866", W080° 20' 56.526"	4.0 W	130	H	IFPA	NO	Enabled	56.4 %	57.3 %
5	PBI	N26° 40' 48.198", W080° 05' 11.359"	3.0 W	130	H	IFPA	NO	Enabled	53.6 %	54.4 %
6	ZEF	N23° 33' 20.610", W075° 51' 52.990"	5.0 W	40	L	IFPA	NO	Disabled		
7	ZFP	N26° 33' 19.250", W078° 41' 52.250"	3.0 W	130	H	IFPA	NO	Disabled		
8	ZGV	N25° 15' 27.000", W076° 18' 31.000"	5.0 W	130	H	IFPA	NO	Disabled		
9	ZQA	N25° 01' 31.860", W077° 26' 47.140"	6.0 W	130	H	IFPA	NO	Disabled		
10	ZTC	N26° 44' 05.000", W077° 22' 45.000"	5.0 W	130	H	IFPA	NO	Disabled		

Flight Check DME Selection						
Distance [NM]	Selected DMEs					Alternate
0.0						
2.8	VKZ	FLL	PBI	DHP		
5.5						
14.7	ZBV	DHP				
21.4	PBI	DHP	ZBV	FLL		
23.3	PBI	FLL				
28.7	DHP	PBI	ZBV	FLL		
32.1	PBI	VKZ	ZBV	DHP	FLL	
33.7	DHP	ZBV	PBI	FLL		
38.0	DHP	ZBV	PBI			

# DME DME Assessment Results for SNAPR1 path KFL:RW10R:DER\_BEECH

## Inertial Drift Segments

#	Start Location	End Location	Length [NM]
1	N26° 03' 56.658", W080° 07' 59.972"	N26° 03' 58.138", W080° 04' 53.697"	2.7936
2	N26° 04' 00.848", W080° 01' 57.673"	N26° 03' 57.187", W079° 51' 46.131"	9.1756

## Available DMEs by Waypoints

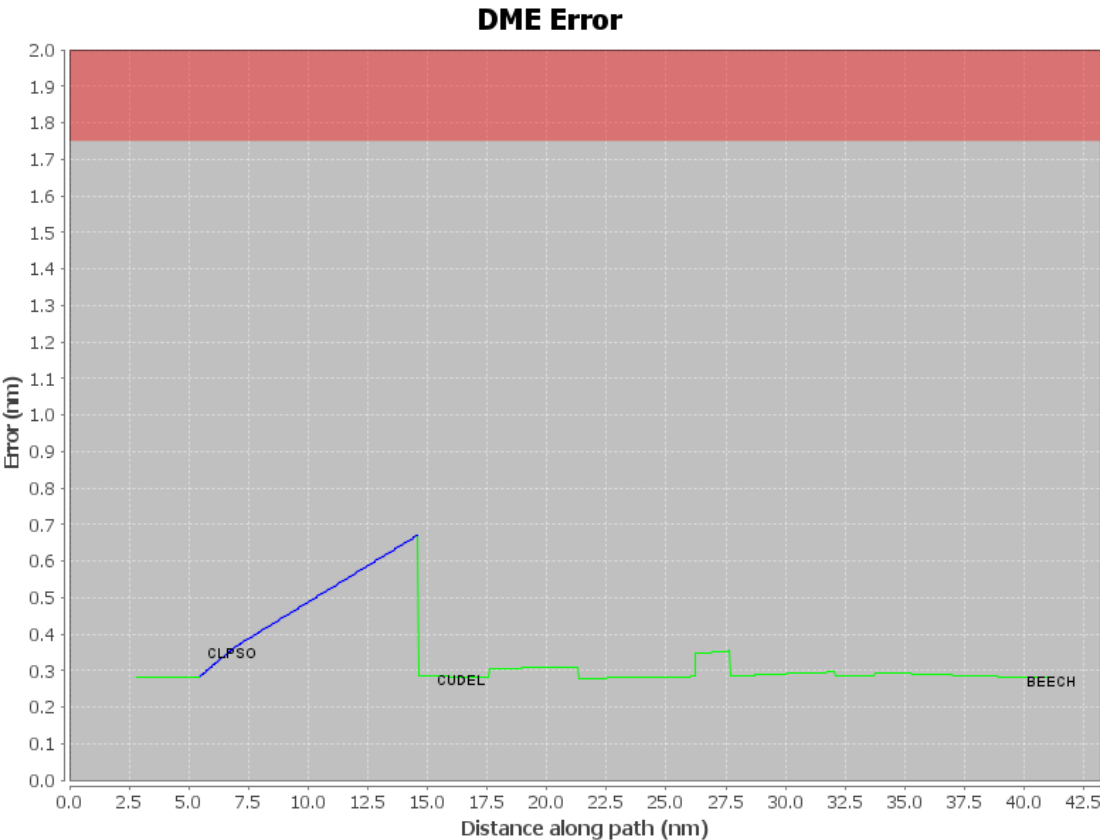
Waypoint Before	Waypoint After	DME List
KFL:RW10R:DER	CLPSO	VKZ, PBI, FLL, DHP
CLPSO	CUDEL	DHP, ZBV
CUDEL	BEECH	VKZ, PBI, FLL, DHP, ZBV

## User Data Files

#	File Name
1	UserDMEsKFL [IFPA] SNAPR1 SID_20210101_1054 EST.udt

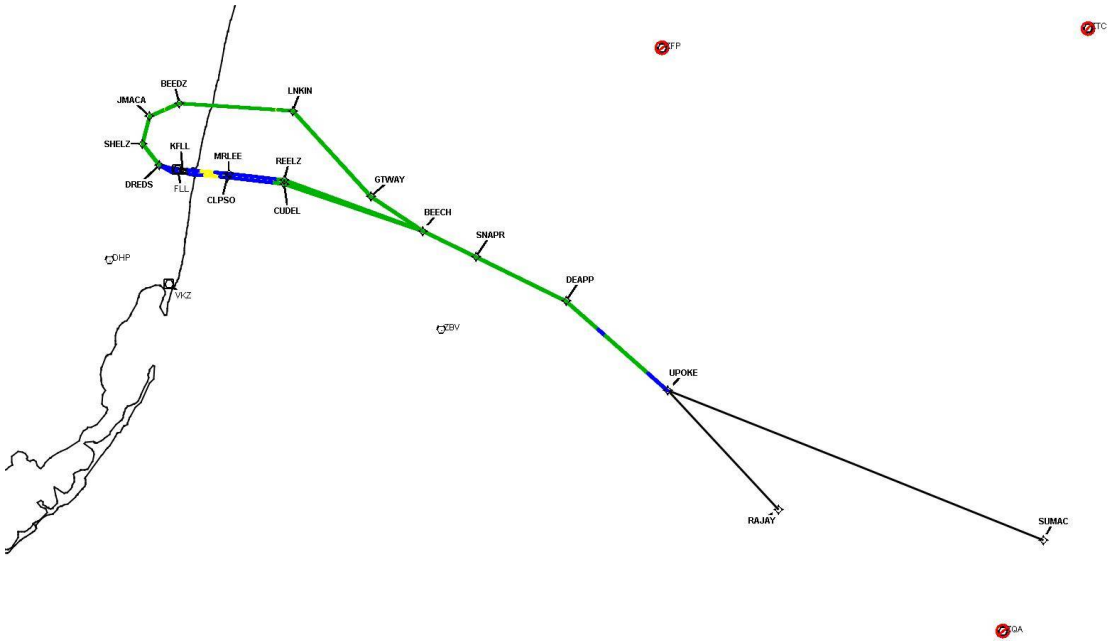
## User DMEs

#	Name	Lat/Lon	MAGVAR	Range	Elevation [ft]	Frequency	Replaces	Status
1	DHP FAA 955264-047 DHP [IFPA]	N25° 47' 59.866", W080° 20' 56.526"	4.0 W	130	5.9	113.9	DHP FAA 955264-047	
ESV:		Bearing [True]: 351.0° to 96.0° Bearing [Mag]: 355.0° to 100.0°				Arc Distance: Out to 80.0 NM Altitude: 5000.0 to 13000.0 ft		
2	VKZ FAA 671324-58 VKZ [IFPA]	N25° 45' 06.846", W080° 09' 15.996"	4.0 W	130	10.5	117.1	VKZ FAA 671324-58	
ESV:		Bearing [True]: 84.0° to 104.0° Bearing [Mag]: 88.0° to 108.0°				Arc Distance: Out to 73.0 NM Altitude: 10000.0 to 20000.0 ft		
3	PBI FAA 882483-45 PBI [IFPA]	N26° 40' 48.198", W080° 05' 11.359"	3.0 W	130	15.7	115.7	PBI FAA 882483-45	
ESV:		Bearing [True]: 125.0° to 164.0° Bearing [Mag]: 128.0° to 167.0°				Arc Distance: Out to 71.0 NM Altitude: 3800.0 to 16000.0 ft		
4	PHK FAA 900991-44 PHK [IFPA]	N26° 46' 57.873", W080° 41' 29.157"	0.0 E	130	15.5	115.4	PHK FAA 900991-44	
ESV:		Bearing [True]: 111.0° to 145.0° Bearing [Mag]: 111.0° to 145.0°				Arc Distance: Out to 65.0 NM Altitude: 3500.0 to 16000.0 ft		
5	PHK FAA 900991-065 PHK [IFPA]	N26° 46' 57.873", W080° 41' 29.157"	0.0 E	130	15.5	115.4	PHK FAA 900991-065	
ESV:		Bearing [True]: 110.0° to 130.0° Bearing [Mag]: 110.0° to 130.0°				Arc Distance: Out to 119.0 NM Altitude: 10000.0 to 18000.0 ft		
6	ZBV FAA 051542-34 ZBV [IFPA]	N25° 42' 15.000", W079° 17' 40.000"	4.0 W	130	10	116.7	ZBV FAA 051542-34	
ESV:		Bearing [True]: 286.0° to 26.0° Bearing [Mag]: 290.0° to 30.0°				Arc Distance: Out to 60.0 NM Altitude: 4000.0 to 18000.0 ft		



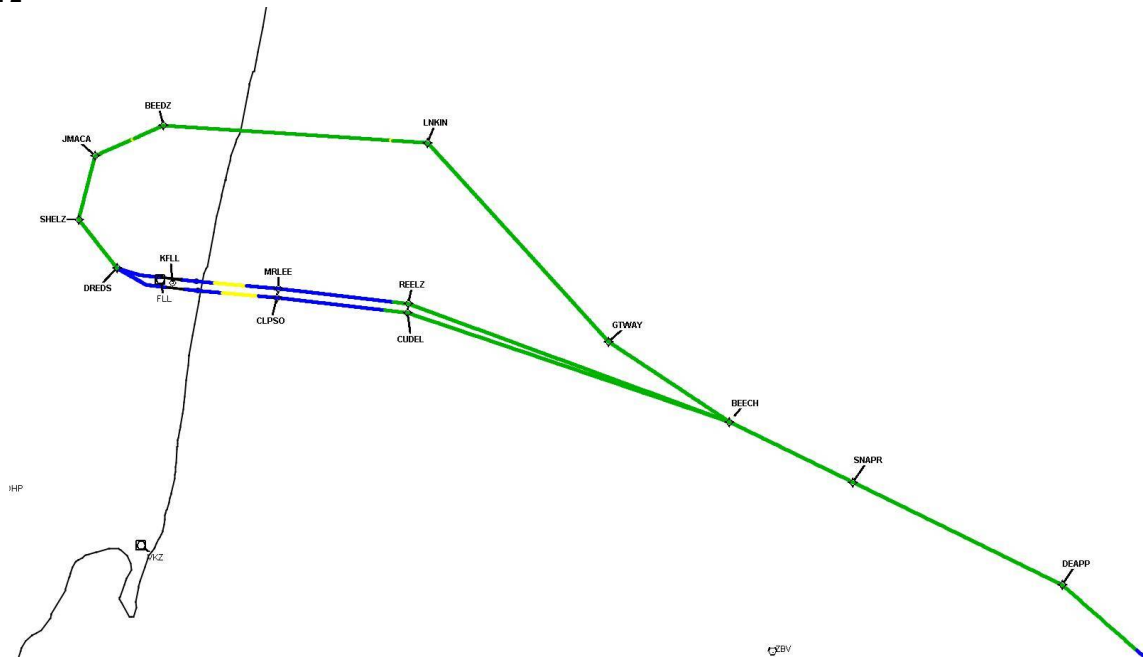
DME DME Assessment Results for SNAPR1 path KFL:RW10R:DER\_BEECH

Graphic Depiction 1



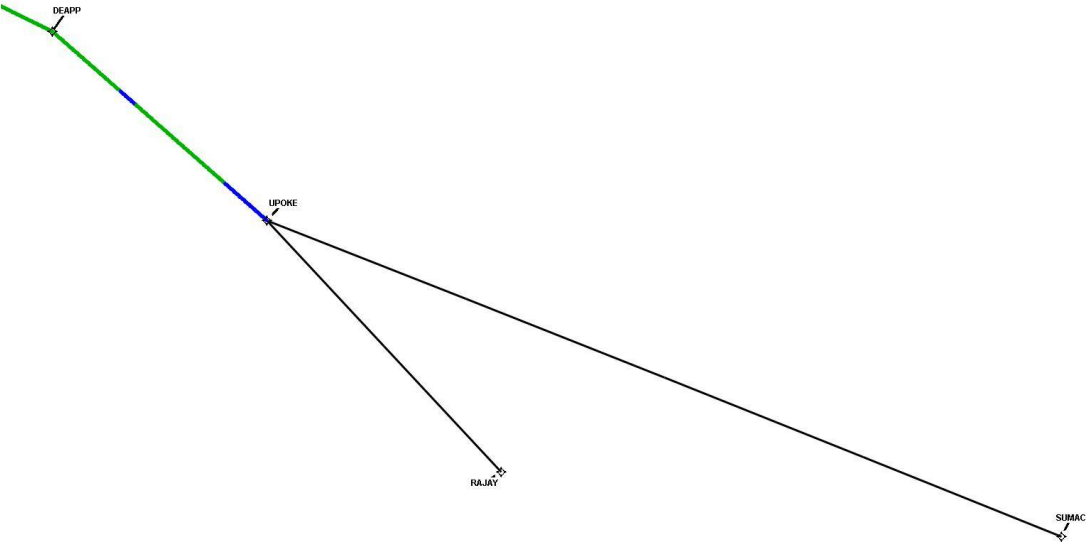
DME DME Assessment Results for SNAPR1 path KFL:RW10R:DER\_BEECH

Graphic Depiction 2



DME DME Assessment Results for SNAPR1 path KFL:RW10R:DER\_BEECH

Graphic Depiction 3



## DME DME Assessment Results for SNAPR1 path KFL:RW28L:DER\_RAJAY

### Results Summary

Flyability:	Completed
DME/DME:	Completed - No Critical DMEs
Name:	Miles CTR Carpenter
Project File:	C:\Users\Miles CTR Carpenter\Desktop\KFL:RW28L:DER_RAJAY\KFL:RW28L:DER_RAJAY SNAPR1 SID DME_03.22.2021.tgs
Output File:	C:\Users\Miles CTR Carpenter\Desktop\KFL:RW28L:DER_RAJAY\KFL:RW28L:DER_RAJAY SNAPR1 SID DME_03.22.2021.tgs [IFPA] SNAPR1 20210322_1515 EDT\KFL:RW28L:DER_RAJAY\KFL:RW28L:DER_RAJAY SNAPR1 SID KFL:RW28L:DER_RAJAY 20210322_1515 EDT.pdf
Procedure Name:	SNAPR1
Software: DmeDmePlugin:	6.2.0
Date/Time:	03/22/2021 15:15 EDT
Databases:	DTED 0max

### Failures

No Failures

### Warnings

GNSS\_ONLY UPOKE\_\_\_\_\_RAJAY is GNSS Only and was not evaluated

### Notes For Flight Check

None

### Flight Plan

Name	Type	Lat/Lon	Altitude (ft)	VNAV Mode	Ground Speed (kts)	Turn Type	Leg Type
KFL:RW28L:DER	WP	N26° 03' 57.192", W080° 09' 30.056"	10.1	VNAV	130	FLY_BY	TF
DREDS	WP	N26° 04' 56.670", W080° 13' 34.420"	1000	VNAV	200	FLY_BY	TF
SHELZ	WP	N26° 08' 10.810", W080° 17' 05.350"	2000	VNAV	200	FLY_BY	TF
JMACA	WP	N26° 12' 53.350", W080° 16' 18.650"	3000	VNAV	200	FLY_BY	TF
BEEDZ	WP	N26° 15' 35.812", W080° 11' 04.495"	4000	VNAV	200	FLY_BY	TF
LNKIN	WP	N26° 16' 21.298", W079° 49' 40.000"	5000	VNAV	200	FLY_BY	TF
GTWAY	WP	N26° 03' 22.689", W079° 33' 27.289"	7000	VNAV	200	FLY_BY	TF
BEECH	WP	N25° 58' 30.370", W079° 23' 03.150"	7000	VNAV	200	FLY_BY	TF
SNAPR	WP	N25° 55' 05.450", W079° 12' 37.290"	10000	VNAV	200	FLY_BY	TF
DEAPP	WP	N25° 49' 15.360", W078° 54' 54.720"	13000	VNAV	240	FLY_BY	TF
UPOKE	WP	N25° 36' 03.280", W078° 34' 12.940"	17000	VNAV	240	FLY_BY	TF
RAJAY	WP	N25° 18' 02.780", W078° 11' 09.510"	18000	VNAV	240	FLY_BY	TF
Climb Gradient: 500.0 ft/NM up to 580.0 ft MSL 200.0 ft/NM							

## DME DME Assessment Results for SNAPR1 path KFL:RW28L:DER\_RAJAY

Flyability	
Flight Type:	SID
Selected Airport:	KFL (IFPA)
Climb Gradient:	500.0 ft/NM up to 580.0 ft MSL 200.0 ft/NM
Speeds:	130 at the Runway DER
	145 at the end of the VA or VI leg
	200 Ground Speed to 11000 FT
	240 Ground Speed to 18000 FT
	260 Ground Speed to 24000 FT
	340 Ground Speed above 24000 FT
Descent During a Turn:	Allowed
VNAV Mode:	Flight Plan

DME/DME	
RNP:	RNP 2
Flight Mode:	Manual
Line of Sight (DTED Level 0 Max):	Evaluated
Inertial Drift:	Enabled
Initial Drift:	0.558 NM
INS Drift Rate:	8.0 NM/Hour
Range Mode:	OSV
RNP Edges:	Evaluated
Min DME Range:	3.0 NM
DME Types:	DME, VOR-DME, VORTAC
DME Include Angles:	30 to 150
Critical DMEs:	Not Allowed
DoD Facilities:	Not included
Foreign Facilities:	Included
High DMEs:	Included
Low DMEs:	Included
Terminal DMEs:	Included
Flight Check DMEs:	Not selected
Higher Altitudes:	Not Evaluated
Near Maximum Altitude:	Not Evaluated
Automatic ESVs:	Not enabled
Disabled DMEs:	ZEF,ZFP,ZGV,ZQA,ZTC



# DME DME Assessment Results for SNAPR1 path KLL:RW28L:DER\_RAJAY

DME/DME (Continued)										
DMEs Used										
#	Name	Lat/Lon	MAGVAR	Range	Type	Source	Critical	Status	Time	Distance
1	PHK	N26° 46' 57.873", W080° 41' 29.157"	0.0 E	130	H	IFPA	NO	Enabled	38.9 %	37.8 %
2	VKZ	N25° 45' 06.846", W080° 09' 15.996"	4.0 W	130	H	IFPA	NO	Enabled	16 %	16.7 %
3	ZBV	N25° 42' 15.000", W079° 17' 40.000"	4.0 W	130	H	IFPA	NO	Enabled	63.7 %	62.3 %
4	FLL	N26° 04' 26.183", W080° 09' 59.192"	6.0 W	130	H	IFPA	NO	Enabled	41.7 %	39.5 %
5	DHP	N25° 47' 59.866", W080° 20' 56.526"	4.0 W	130	H	IFPA	NO	Enabled	68.8 %	66.5 %
6	PBI	N26° 40' 48.198", W080° 05' 11.359"	3.0 W	130	H	IFPA	NO	Enabled	59.1 %	57.1 %
7	ZEF	N23° 33' 20.610", W075° 51' 52.990"	5.0 W	40	L	IFPA	NO	Disabled		
8	ZFP	N26° 33' 19.250", W078° 41' 52.250"	3.0 W	130	H	IFPA	NO	Disabled		
9	ZGV	N25° 15' 27.000", W076° 18' 31.000"	5.0 W	130	H	IFPA	NO	Disabled		
10	ZQA	N25° 01' 31.860", W077° 26' 47.140"	6.0 W	130	H	IFPA	NO	Disabled		
11	ZTC	N26° 44' 05.000", W077° 22' 45.000"	5.0 W	130	H	IFPA	NO	Disabled		

Flight Check DME Selection						
Distance [NM]	Selected DMEs					Alternate
0.0						
3.6	FLL	DHP				
5.7	FLL	DHP	PBI			
11.3	FLL	DHP				
13.2	FLL	PBI	DHP			
15.1	FLL	DHP				
15.9	PHK	PBI	DHP	FLL		
16.1	PHK	PBI	DHP	FLL	VKZ	
16.2	PHK	PBI	DHP			
16.6	PHK	DHP	PBI	VKZ		
18.5	PHK	DHP	PBI	VKZ	FLL	
27.8	PHK	FLL	ZBV	DHP	PBI	
33.7	ZBV	FLL	PHK	PBI		
35.1	ZBV	DHP	FLL	PHK	PBI	
35.3	ZBV	FLL	PBI	PHK		
37.8	FLL	PBI	DHP	ZBV	PHK	
46.8	DHP	PBI	ZBV	FLL		
63.4	DHP	ZBV	PBI			
77.9	PBI	ZBV	DHP	PHK		
81.9	PHK	ZBV	DHP			
94.9	PHK	ZBV				
95.6	PHK	ZBV	VKZ			
99.3	PHK	ZBV				
102.0						
103.7	ZBV	PBI	VKZ	DHP		
112.1	VKZ	PBI	DHP			
113.2						

Inertial Drift Segments			
#	Start Location	End Location	Length [NM]
1	N26° 03' 57.206", W080° 09' 32.429"	N26° 04' 50.876", W080° 13' 19.769"	3.5935
2	N25° 45' 08.586", W078° 48' 26.852"	N25° 44' 10.887", W078° 46' 56.293"	1.6663

# DME DME Assessment Results for SNAPR1 path KFL:RW28L:DER\_RAJAY

## Available DMEs by Waypoints

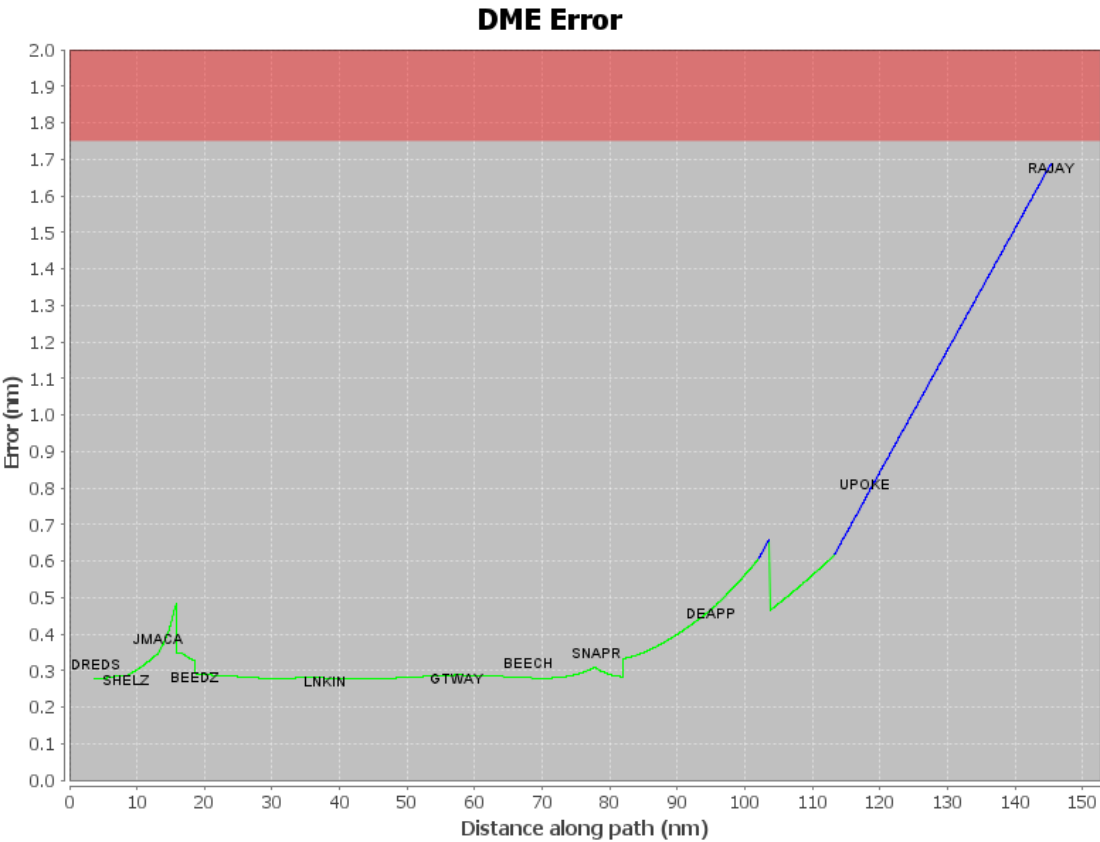
Waypoint Before	Waypoint After	DME List
KFL:RW28L:DER	DREDS	FLL, DHP
DREDS	SHELZ	PBI, FLL, DHP
SHELZ	JMACA	PBI, FLL, DHP
JMACA	BEEDZ	PHK, VKZ, PBI, FLL, DHP
BEEDZ	LNKIN	PHK, VKZ, PBI, FLL, DHP, ZBV
LNKIN	GTWAY	PHK, PBI, FLL, DHP, ZBV
GTWAY	BEECH	PBI, FLL, DHP, ZBV
BEECH	SNAPR	PHK, PBI, DHP, ZBV
SNAPR	DEAPP	PHK, PBI, DHP, ZBV
DEAPP	UPOKE	PHK, VKZ, PBI, DHP, ZBV
UPOKE	RAJAY	

## User Data Files

#	File Name
1	UserDMEsKFL [IFPA] SNAPR1 SID_20210101_1054 EST.udt

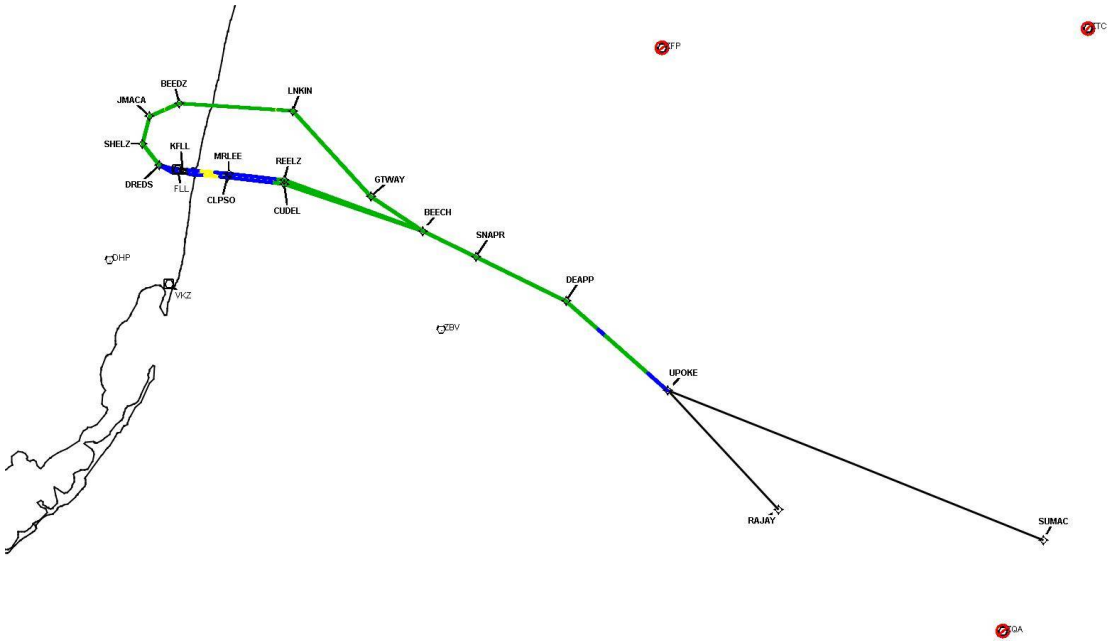
## User DMEs

#	Name	Lat/Lon	MAGVAR	Range	Elevation [ft]	Frequency	Replaces	Status
1	DHP FAA 955264-047 DHP [IFPA]	N25° 47' 59.866", W080° 20' 56.526"	4.0 W	130	5.9	113.9	DHP FAA 955264-047	
ESV:		Bearing [True]: 351.0° to 96.0° Bearing [Mag]: 355.0° to 100.0°				Arc Distance: Out to 80.0 NM Altitude: 5000.0 to 13000.0 ft		
2	VKZ FAA 671324-58 VKZ [IFPA]	N25° 45' 06.846", W080° 09' 15.996"	4.0 W	130	10.5	117.1	VKZ FAA 671324-58	
ESV:		Bearing [True]: 84.0° to 104.0° Bearing [Mag]: 88.0° to 108.0°				Arc Distance: Out to 73.0 NM Altitude: 10000.0 to 20000.0 ft		
3	PBI FAA 882483-45 PBI [IFPA]	N26° 40' 48.198", W080° 05' 11.359"	3.0 W	130	15.7	115.7	PBI FAA 882483-45	
ESV:		Bearing [True]: 125.0° to 164.0° Bearing [Mag]: 128.0° to 167.0°				Arc Distance: Out to 71.0 NM Altitude: 3800.0 to 16000.0 ft		
4	PHK FAA 900991-44 PHK [IFPA]	N26° 46' 57.873", W080° 41' 29.157"	0.0 E	130	15.5	115.4	PHK FAA 900991-44	
ESV:		Bearing [True]: 111.0° to 145.0° Bearing [Mag]: 111.0° to 145.0°				Arc Distance: Out to 65.0 NM Altitude: 3500.0 to 16000.0 ft		
5	PHK FAA 900991-065 PHK [IFPA]	N26° 46' 57.873", W080° 41' 29.157"	0.0 E	130	15.5	115.4	PHK FAA 900991-065	
ESV:		Bearing [True]: 110.0° to 130.0° Bearing [Mag]: 110.0° to 130.0°				Arc Distance: Out to 119.0 NM Altitude: 10000.0 to 18000.0 ft		
6	ZBV FAA 051542-34 ZBV [IFPA]	N25° 42' 15.000", W079° 17' 40.000"	4.0 W	130	10	116.7	ZBV FAA 051542-34	
ESV:		Bearing [True]: 286.0° to 26.0° Bearing [Mag]: 290.0° to 30.0°				Arc Distance: Out to 60.0 NM Altitude: 4000.0 to 18000.0 ft		



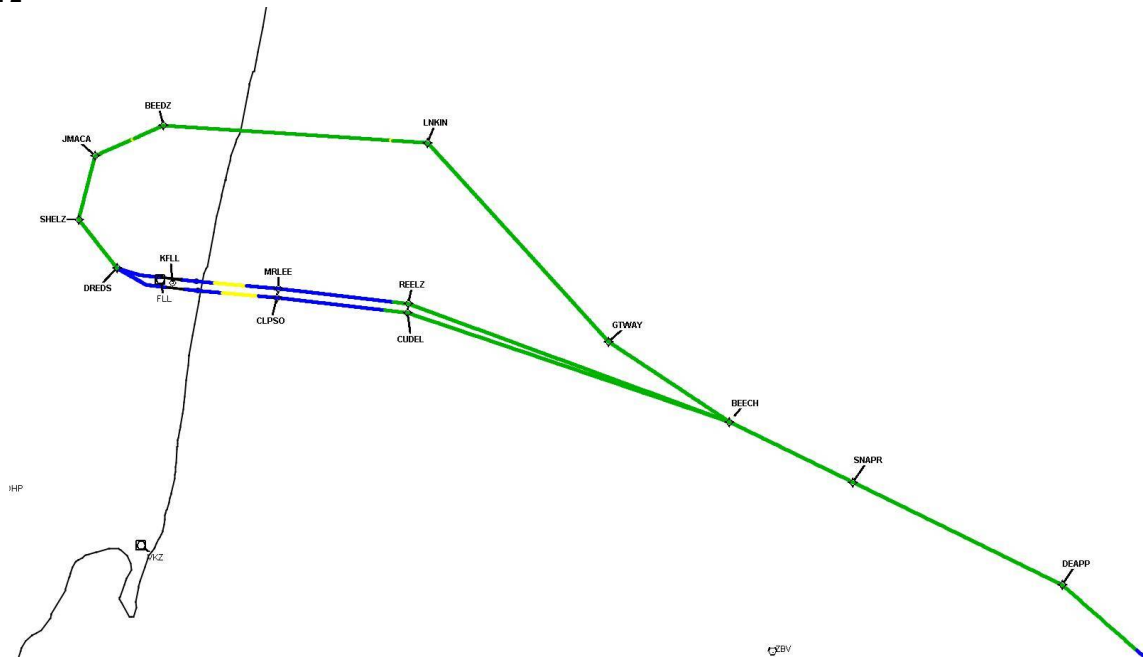
DME DME Assessment Results for SNAPR1 path KFL:RW28L:DER\_RAJAY

Graphic Depiction 1



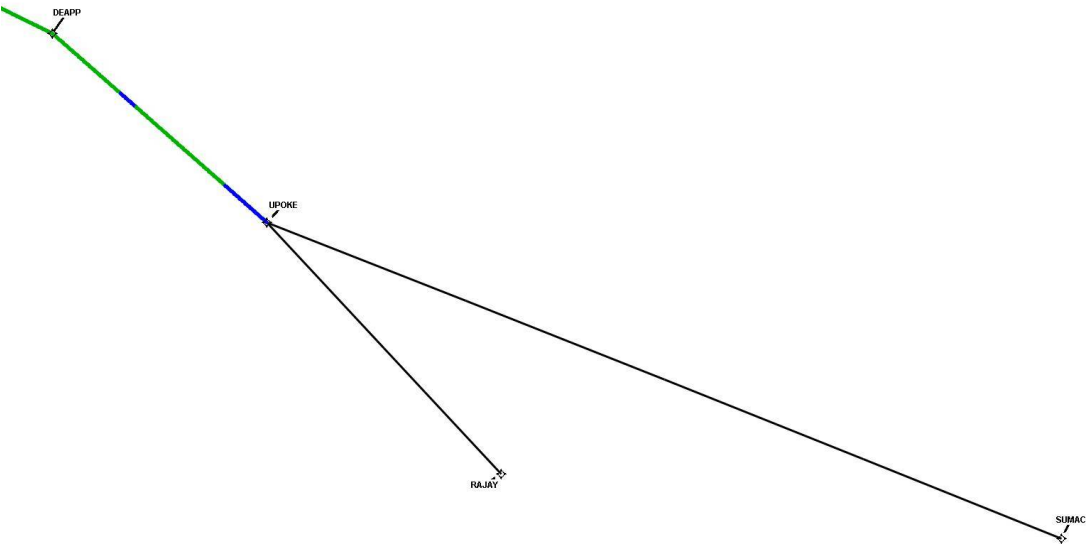
DME DME Assessment Results for SNAPR1 path KFL:RW28L:DER\_RAJAY

Graphic Depiction 2



DME DME Assessment Results for SNAPR1 path KFL:RW28L:DER\_RAJAY

Graphic Depiction 3



## DME DME Assessment Results for SNAPR1 path KFL:RW28R:DER\_DREDS

### Results Summary

Flyability:	Completed
DME/DME:	Completed - No Critical DMEs
Name:	Miles CTR Carpenter
Project File:	C:\Users\Miles CTR Carpenter\Desktop\KFL: SIDs DME\KFL: SNAPR SID DME\KFL: SNAPR1 SID DME_03.22.2021.tgs
Output File:	C:\Users\Miles CTR Carpenter\Desktop\KFL: SIDs DME\KFL: SNAPR SID DME\KFL: [IFPA] SNAPR1 20210322_1515 EDT\KFL:RW28R-DER_DREDS\KFL: SNAPR1 SID KFL: RW28R DREDS 20210322_1515 EDT.pdf
Procedure Name:	SNAPR1
Software: DmeDmePlugin:	6.2.0
Date/Time:	03/22/2021 15:15 EDT
Databases:	DTED 0max

### Failures

No Failures

### Warnings

No Warnings

### Notes For Flight Check

None

### Flight Plan

Name	Type	Lat/Lon	Altitude (ft)	VNAV Mode	Ground Speed (kts)	Turn Type	Leg Type
KFL:RW28R:DER	WP	N26° 04' 37.017", W080° 09' 59.538"	6	VNAV	130	FLY_BY	TF
DREDS	WP	N26° 04' 56.670", W080° 13' 34.420"	1000	VNAV	200	FLY_BY	TF
Climb Gradient: 500.0 ft/NM up to 580.0 ft MSL 200.0 ft/NM							

### Flyability

Flight Type:	SID
Selected Airport:	KFL [IFPA]
Climb Gradient:	500.0 ft/NM up to 580.0 ft MSL 200.0 ft/NM
Speeds:	130 at the Runway DER
	145 at the end of the VA or VI leg
	200 Ground Speed to 11000 FT
	240 Ground Speed to 18000 FT
	260 Ground Speed to 24000 FT
	340 Ground Speed above 24000 FT
Descent During a Turn:	Allowed
VNAV Mode:	Flight Plan

## DME DME Assessment Results for SNAPR1 path KLL:RW28R:DER\_DREDS

DME/DME	
RNP:	RNP 2
Flight Mode:	Manual
Line of Sight (DTED Level 0 Max):	Evaluated
Inertial Drift:	Enabled
Initial Drift:	0.558 NM
INS Drift Rate:	8.0 NM/Hour
Range Mode:	OSV
RNP Edges:	Evaluated
Min DME Range:	3.0 NM
DME Types:	DME, VOR-DME, VORTAC
DME Include Angles:	30 to 150
Critical DMEs:	Not Allowed
DoD Facilities:	Not included
Foreign Facilities:	Included
High DMEs:	Included
Low DMEs:	Included
Terminal DMEs:	Included
Flight Check DMEs:	Not selected
Higher Altitudes:	Not Evaluated
Near Maximum Altitude:	Not Evaluated
Automatic ESVs:	Not enabled
Disabled DMEs:	ZEF,ZFP,ZGV,ZQA,ZTC

DME/DME (Continued)										
DMEs Used										
#	Name	Lat/Lon	MAGVAR	Range	Type	Source	Critical	Status	Time	Distance
1	ZEF	N23° 33' 20.610", W075° 51' 52.990"	5.0 W	40	L	IFPA	NO	Disabled		
2	ZFP	N26° 33' 19.250", W078° 41' 52.250"	3.0 W	130	H	IFPA	NO	Disabled		
3	ZGV	N25° 15' 27.000", W076° 18' 31.000"	5.0 W	130	H	IFPA	NO	Disabled		
4	ZQA	N25° 01' 31.860", W077° 26' 47.140"	6.0 W	130	H	IFPA	NO	Disabled		
5	ZTC	N26° 44' 05.000", W077° 22' 45.000"	5.0 W	130	H	IFPA	NO	Disabled		

Flight Check DME Selection						
Distance [NM]	Selected DMEs					Alternate
0.0						

Inertial Drift Segments			
#	Start Location	End Location	Length [NM]
1	N26° 04' 37.030", W080° 10' 01.929"	N26° 04' 56.670", W080° 13' 34.420"	3.2146

Available DMEs by Waypoints		
Waypoint Before	Waypoint After	DME List
KLL:RW28R:DER	DREDS	



# DME DME Assessment Results for SNAPR1 path KFL:RW28R:DER\_DREDS

## User Data Files

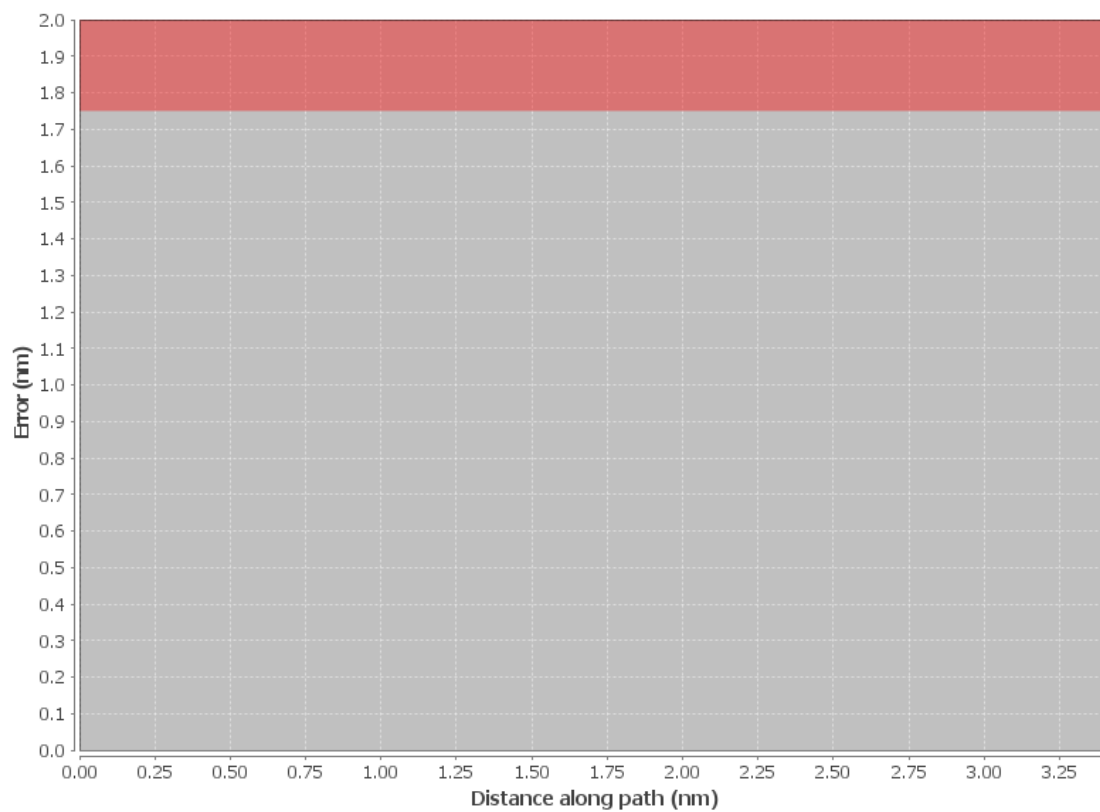
#	File Name
1	UserDMEsKFL [IFPA] SNAPR1 SID_20210101_1054 EST.udt

## User DMEs

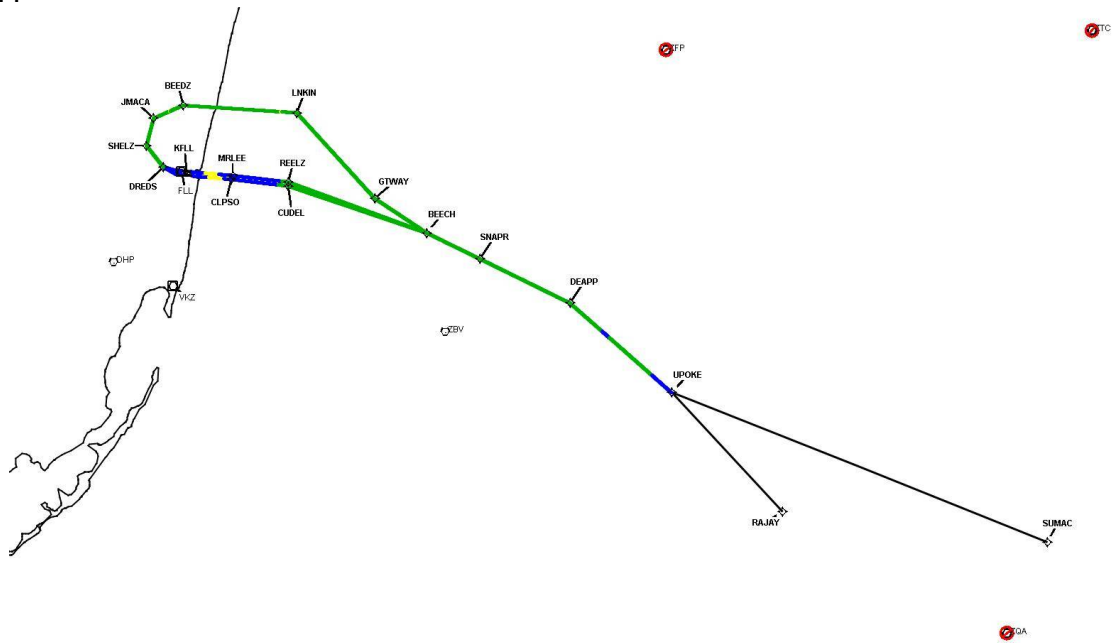
#	Name	Lat/Lon	MAGVAR	Range	Elevation [ft]	Frequency	Replaces	Status
1	DHP FAA 955264-047 DHP [IFPA]	N25° 47' 59.866", W080° 20' 56.526"	4.0 W	130	5.9	113.9	DHP FAA 955264-047	
ESV:		Bearing [True]: 351.0° to 96.0° Bearing [Mag]: 355.0° to 100.0°				Arc Distance: Out to 80.0 NM Altitude: 5000.0 to 13000.0 ft		
2	VKZ FAA 671324-58 VKZ [IFPA]	N25° 45' 06.846", W080° 09' 15.996"	4.0 W	130	10.5	117.1	VKZ FAA 671324-58	
ESV:		Bearing [True]: 84.0° to 104.0° Bearing [Mag]: 88.0° to 108.0°				Arc Distance: Out to 73.0 NM Altitude: 10000.0 to 20000.0 ft		
3	PBI FAA 882483-45 PBI [IFPA]	N26° 40' 48.198", W080° 05' 11.359"	3.0 W	130	15.7	115.7	PBI FAA 882483-45	
ESV:		Bearing [True]: 125.0° to 164.0° Bearing [Mag]: 128.0° to 167.0°				Arc Distance: Out to 71.0 NM Altitude: 3800.0 to 16000.0 ft		
4	PHK FAA 900991-44 PHK [IFPA]	N26° 46' 57.873", W080° 41' 29.157"	0.0 E	130	15.5	115.4	PHK FAA 900991-44	
ESV:		Bearing [True]: 111.0° to 145.0° Bearing [Mag]: 111.0° to 145.0°				Arc Distance: Out to 65.0 NM Altitude: 3500.0 to 16000.0 ft		
5	PHK FAA 900991-065 PHK [IFPA]	N26° 46' 57.873", W080° 41' 29.157"	0.0 E	130	15.5	115.4	PHK FAA 900991-065	
ESV:		Bearing [True]: 110.0° to 130.0° Bearing [Mag]: 110.0° to 130.0°				Arc Distance: Out to 119.0 NM Altitude: 10000.0 to 18000.0 ft		
6	ZBV FAA 051542-34 ZBV [IFPA]	N25° 42' 15.000", W079° 17' 40.000"	4.0 W	130	10	116.7	ZBV FAA 051542-34	
ESV:		Bearing [True]: 286.0° to 26.0° Bearing [Mag]: 290.0° to 30.0°				Arc Distance: Out to 60.0 NM Altitude: 4000.0 to 18000.0 ft		

# DME DME Assessment Results for SNAPR1 path KFL:RW28R:DER\_DREDS

## DME Error

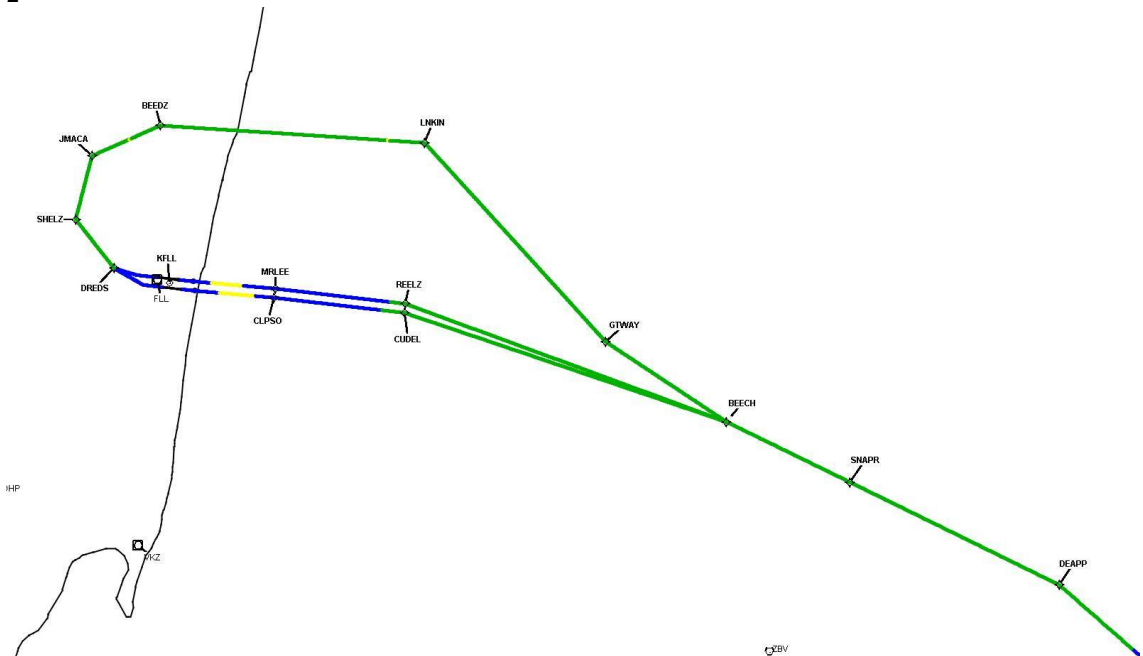


### Graphic Depiction 1

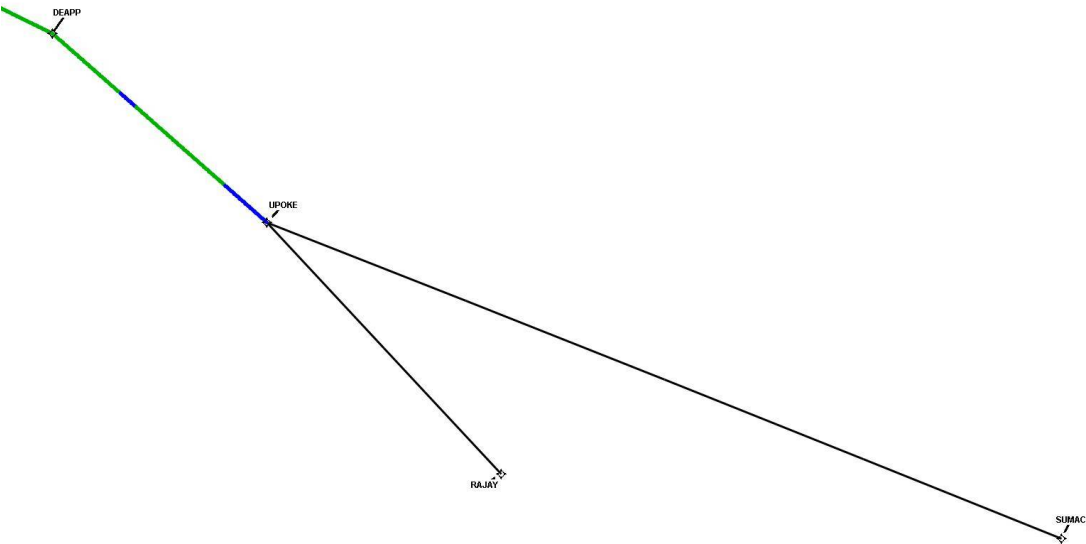


DME DME Assessment Results for SNAPR1 path KFL:RW28R:DER\_DREDS

Graphic Depiction 2



Graphic Depiction 3



## DME DME Assessment Results for SNAPR1 path UPOKE\_SUMAC

### Results Summary

Flyability:	Completed
DME/DME:	Completed - No Critical DMEs
Name:	Miles CTR Carpenter
Project File:	C:\Users\Miles CTR Carpenter\Desktop\KFLS DME\KFLS SNAPR SID DME\KFLS SNAPR1 SID DME_03.22.2021.tgs
Output File:	C:\Users\Miles CTR Carpenter\Desktop\KFLS DME\KFLS SNAPR SID DME\KFLS [IFPA] SNAPR1 20210322_1515 EDT\UPOKE_SUMAC\KFLS SNAPR1 SID UPOKE SUMAC 20210322_1515 EDT.pdf
Procedure Name:	SNAPR1
Software: DmeDmePlugin:	6.2.0
Date/Time:	03/22/2021 15:15 EDT
Databases:	DTED 0max

### Failures

No Failures

### Warnings

GNSS\_ONLY UPOKE\_\_\_\_\_SUMAC is GNSS Only and was not evaluated

### Notes For Flight Check

None

### Flight Plan

Name	Type	Lat/Lon	Altitude (ft)	VNAV Mode	Ground Speed (kts)	Turn Type	Leg Type
UPOKE	WP	N25° 36' 03.280", W078° 34' 12.940"	17000	VNAV	240	FLY_BY	TF
SUMAC	WP	N25° 17' 33.510", W077° 21' 02.940"	18000	VNAV	240	FLY_BY	TF

### Flyability

Flight Type:	SID
Selected Airport:	KFLS [IFPA]
Climb Gradient:	None assigned
Speeds:	130 at the Runway DER
	145 at the end of the VA or VI leg
	200 Ground Speed to 11000 FT
	240 Ground Speed to 18000 FT
	260 Ground Speed to 24000 FT
	340 Ground Speed above 24000 FT
Descent During a Turn:	Allowed
VNAV Mode:	Flight Plan

## DME DME Assessment Results for SNAPR1 path UPOKE\_SUMAC

DME/DME	
RNP:	RNP 2
Flight Mode:	Manual
Line of Sight (DTED Level 0 Max):	Evaluated
Inertial Drift:	Enabled
Initial Drift:	0.558 NM
INS Drift Rate:	8.0 NM/Hour
Range Mode:	OSV
RNP Edges:	Evaluated
Min DME Range:	3.0 NM
DME Types:	DME, VOR-DME, VORTAC
DME Include Angles:	30 to 150
Critical DMEs:	Not Allowed
DoD Facilities:	Not included
Foreign Facilities:	Included
High DMEs:	Included
Low DMEs:	Included
Terminal DMEs:	Included
Flight Check DMEs:	Not selected
Higher Altitudes:	Not Evaluated
Near Maximum Altitude:	Not Evaluated
Automatic ESVs:	Not enabled
Disabled DMEs:	ZEF,ZFP,ZGV,ZQA,ZTC

DME/DME (Continued)										
DMEs Used										
#	Name	Lat/Lon	MAGVAR	Range	Type	Source	Critical	Status	Time	Distance
1	ZEF	N23° 33' 20.610", W075° 51' 52.990"	5.0 W	40	L	IFPA	NO	Disabled		
2	ZFP	N26° 33' 19.250", W078° 41' 52.250"	3.0 W	130	H	IFPA	NO	Disabled		
3	ZGV	N25° 15' 27.000", W076° 18' 31.000"	5.0 W	130	H	IFPA	NO	Disabled		
4	ZQA	N25° 01' 31.860", W077° 26' 47.140"	6.0 W	130	H	IFPA	NO	Disabled		
5	ZTC	N26° 44' 05.000", W077° 22' 45.000"	5.0 W	130	H	IFPA	NO	Disabled		

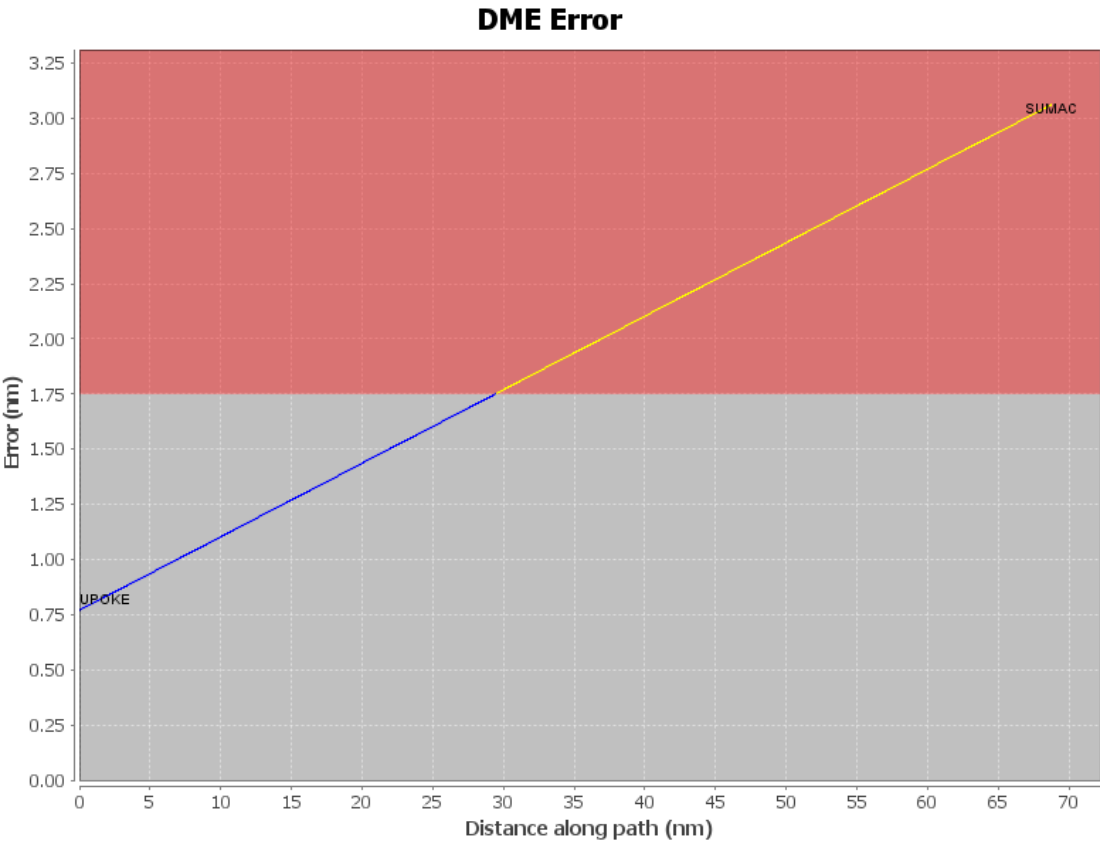
Inertial Drift Segments			
#	Start Location	End Location	Length [NM]

Available DMEs by Waypoints		
Waypoint Before	Waypoint After	DME List
UPOKE	SUMAC	

# DME DME Assessment Results for SNAPR1 path UPOKE\_SUMAC

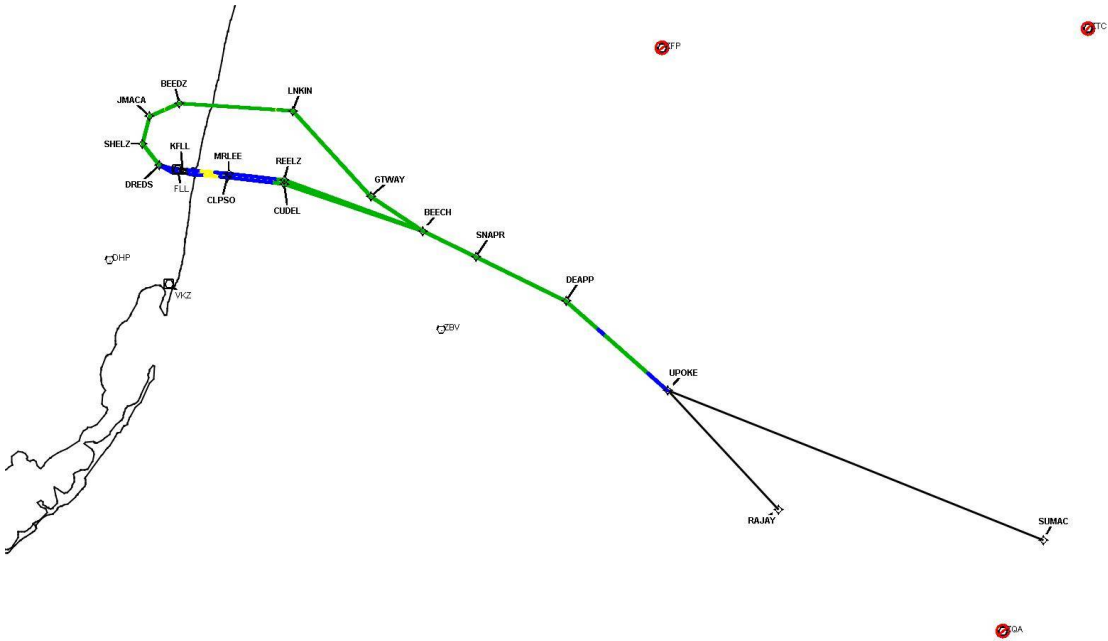
User Data Files								
#	File Name							
1	UserDMEsKFLL [IFPA] SNAPR1 SID_20210101_1054 EST.udt							
User DMEs								
#	Name	Lat/Lon	MAGVAR	Range	Elevation [ft]	Frequency	Replaces	Status
1	DHP FAA 955264-047 DHP [IFPA]	N25° 47' 59.866", W080° 20' 56.526"	4.0 W	130	5.9	113.9	DHP FAA 955264-047	
ESV:		Bearing [True]: 351.0° to 96.0° Bearing [Mag]: 355.0° to 100.0°				Arc Distance: Out to 80.0 NM Altitude: 5000.0 to 13000.0 ft		
2	VKZ FAA 671324-58 VKZ [IFPA]	N25° 45' 06.846", W080° 09' 15.996"	4.0 W	130	10.5	117.1	VKZ FAA 671324-58	
ESV:		Bearing [True]: 84.0° to 104.0° Bearing [Mag]: 88.0° to 108.0°				Arc Distance: Out to 73.0 NM Altitude: 10000.0 to 20000.0 ft		
3	PBI FAA 882483-45 PBI [IFPA]	N26° 40' 48.198", W080° 05' 11.359"	3.0 W	130	15.7	115.7	PBI FAA 882483-45	
ESV:		Bearing [True]: 125.0° to 164.0° Bearing [Mag]: 128.0° to 167.0°				Arc Distance: Out to 71.0 NM Altitude: 3800.0 to 16000.0 ft		
4	PHK FAA 900991-44 PHK [IFPA]	N26° 46' 57.873", W080° 41' 29.157"	0.0 E	130	15.5	115.4	PHK FAA 900991-44	
ESV:		Bearing [True]: 111.0° to 145.0° Bearing [Mag]: 111.0° to 145.0°				Arc Distance: Out to 65.0 NM Altitude: 3500.0 to 16000.0 ft		
5	PHK FAA 900991-065 PHK [IFPA]	N26° 46' 57.873", W080° 41' 29.157"	0.0 E	130	15.5	115.4	PHK FAA 900991-065	
ESV:		Bearing [True]: 110.0° to 130.0° Bearing [Mag]: 110.0° to 130.0°				Arc Distance: Out to 119.0 NM Altitude: 10000.0 to 18000.0 ft		
6	ZBV FAA 051542-34 ZBV [IFPA]	N25° 42' 15.000", W079° 17' 40.000"	4.0 W	130	10	116.7	ZBV FAA 051542-34	
ESV:		Bearing [True]: 286.0° to 26.0° Bearing [Mag]: 290.0° to 30.0°				Arc Distance: Out to 60.0 NM Altitude: 4000.0 to 18000.0 ft		





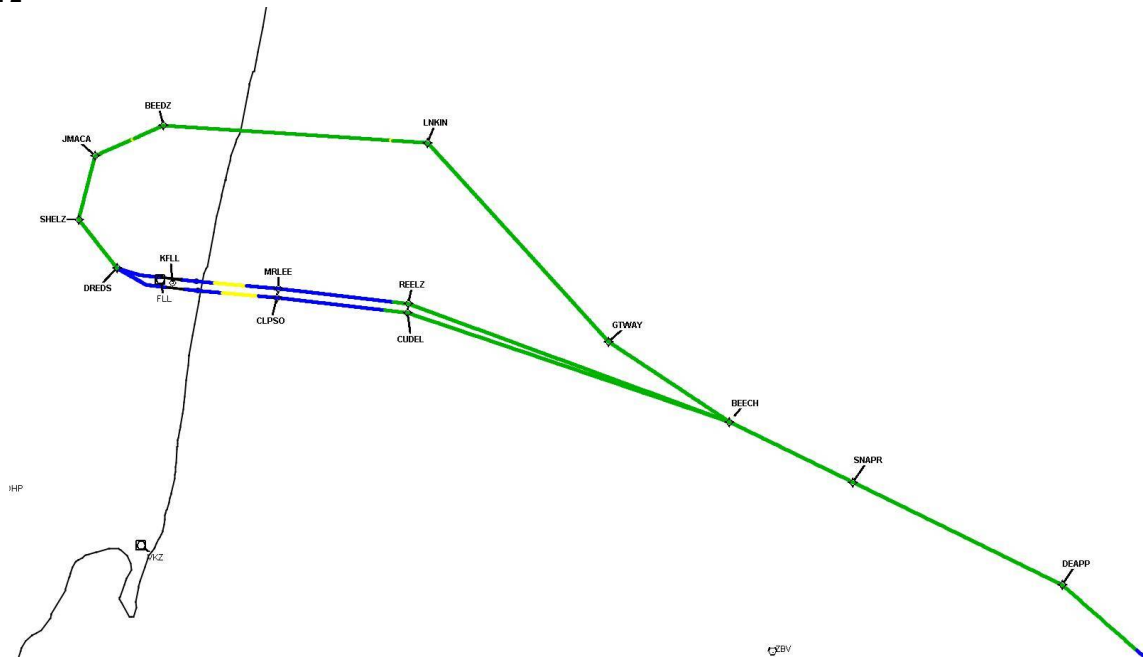
DME DME Assessment Results for SNAPR1 path UPOKE\_SUMAC

Graphic Depiction 1



DME DME Assessment Results for SNAPR1 path UPOKE\_SUMAC

Graphic Depiction 2



DME DME Assessment Results for SNAPR1 path UPOKE\_SUMAC

Graphic Depiction 3

