

Flight Procedures Cover Page	Task Action: P-NOTAM	Task Type: IAP	Estimated Chart Date: 02/25/2021	APWS Task ID: D73F43CD24694266A9BE6719A22BDE20	APWS Project ID: 55EA79DB34B945538600F52F1E8DF346
Procedure: RNAV (GPS) RWY 16 AMDT 1B		Enroute: NO	Specialist: Keefer, John		Agreement Number:
Airport ID: KNRN	Airport Name: NORTON MUNI		Airport City: NORTON		State: KS
Facility ID:	Facility Type:	Flight Inspection Remark Type:			
<div>Procedure Comments: PNOTAM This will remove NOTAM 0/6962 Order 8260.3, chapter 2, New Circling Criteria Applied. CONTACT: WARDELL HENNING 405-954-9954</div> <div>Digitally signed by <b>JON DENTON</b> Nov 12, 2020</div> <div>QUALITY 30 CHECKED</div> <div>11/6 BBLUE</div> <div>QUALITY 26 CHECKED</div>					

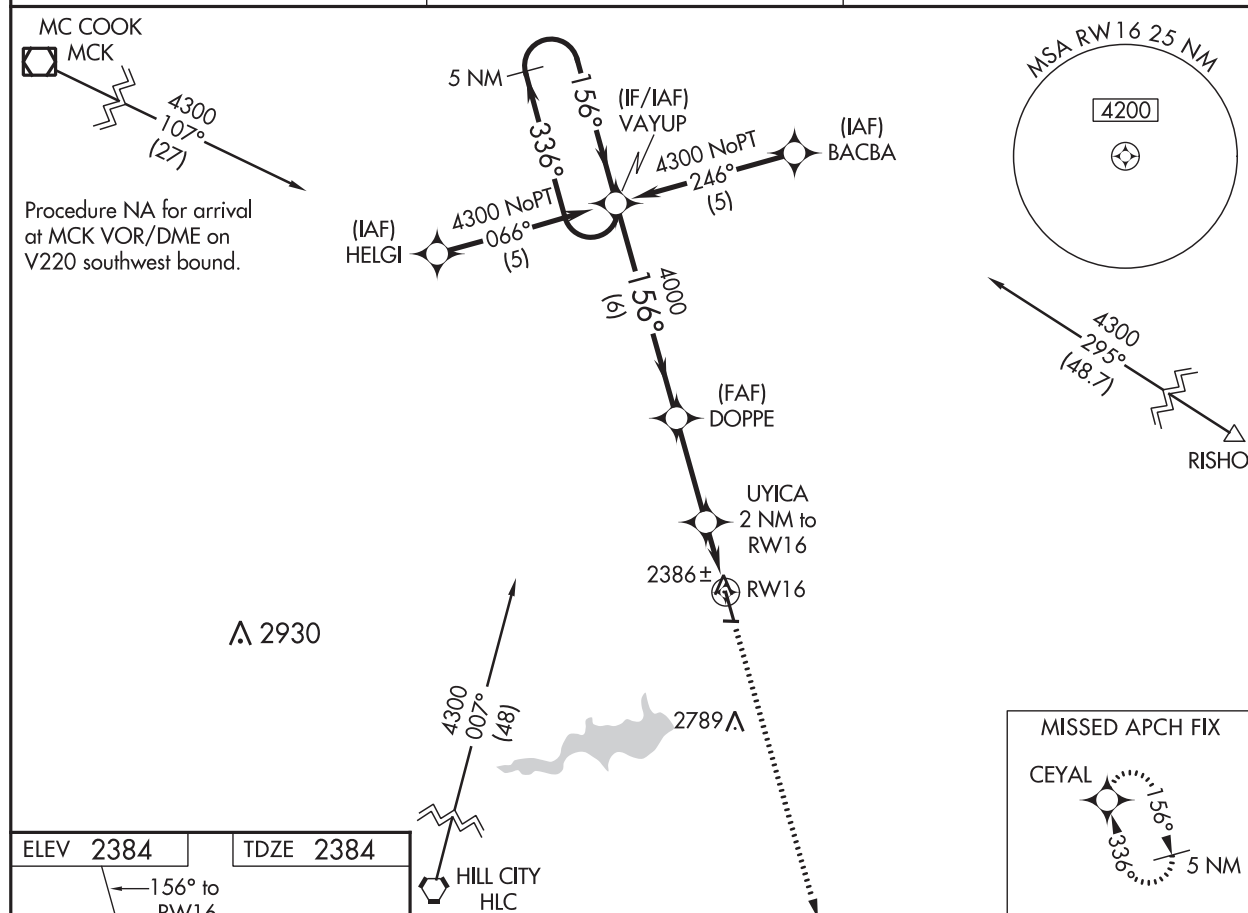
WAAS CH <b>99519</b> <b>W16A</b>	APP CRS <b>156°</b>	Rwy Idg <b>4701</b> TDZE <b>2384</b> Apt Elev <b>2384</b>
--	------------------------	---

# RNAV (GPS) RWY 16

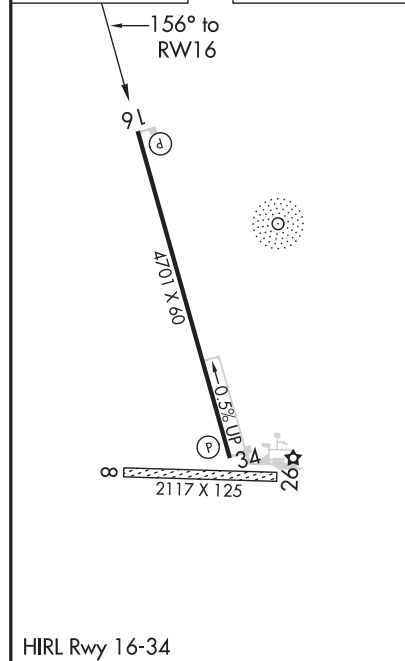
NORTON MUNI (NRN)

<p><b>NA</b> Baro-VNAV NA when using Hill City Muni altimeter setting. For uncompensated Baro-VNAV systems, LNAV/VNAV NA below -19°C (-2°F) or above 54°C (130°F). DME/DME RNP-0.3 NA. When local altimeter setting not received, use Hill City Muni altimeter setting and increase all DA 86 feet, all MDA 100 feet, increase LPV all Cats, LNAV/VNAV all Cats, LNAV Cat C visibility ¼ mile.</p>	<p><b>MISSED APPROACH:</b> Climb to 4300 direct CEYAL and hold.</p>
--	---

AWOS-3 <b>118.275</b>	DENVER CENTER <b>132.7 226.675</b>	CTAF <b>122.9</b>
--------------------------	---------------------------------------	----------------------



ELEV <b>2384</b>	TDZE <b>2384</b>
------------------	------------------



	5 NM Holding Pattern	VAYUP	DOPPE	UYICA 2 NM to RW16	RW16
	4300	336°	156°	4000	
	GP 3.00°				
	TCH 45				
		6 NM	2.9 NM	2 NM	
CATEGORY	A	B	C	D	
LPV DA	2634-1	250 (300-1)		NA	
LNAV/VNAV DA	2656-1	272 (300-1)		NA	
LNAV MDA	2840-1	456 (500-1)	2840-1 ¼ 456 (500-1 ¼)	NA	
CIRCLING	2880-1	496 (500-1)	2880-1 ½ 496 (500-1 ½)	NA	



CENTER

Circling CAT B TREE (2479)



RW16

Municipal Airport

Norton



Circling CAT A TOWER (2449)  
20-001380

Circling CAT C TOWER (2789)  
20-001265



NORTON MUNI  
NORTON, KANSAS  
RNAV (GPS) RWY 16 A1B  
CIRCLING 1:100,000