

Flight Procedures Cover Page	Task Action: FLIGHT CHECK	Task Type: IAP	Estimated Chart Date: 05/21/2020	APWS Task ID: D6DA97DD7C544235810CEBE41D8AB5C4	APWS Request ID: EF8874DC17F548B6A760F4C08058E635
Procedure: RNAV (GPS) RWY 13 AMDT 1B		Enroute: NO	Specialist: Moore, Frank		Agreement Number:
Airport ID: KHEZ	Airport Name: HARDY-ANDERS FIELD NATCHEZ-ADAMS COUNTY		Airport City: NATCHEZ		State: MS
Facility ID:	Facility Type:	Flight Inspection Remark Type: New FC Slot			


Procedure Comments:
CONTACT DAVE TEFFETELLER 202-267-5177
CRC REMAINDER CHANGED FROM C23C8D1D TO 98EA7B10.
FLIGHT CHECK FOR NEW CIRCLING ICON ONLY.

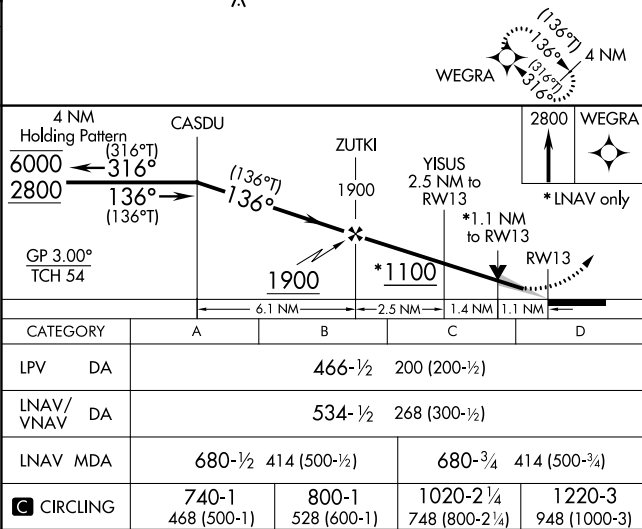
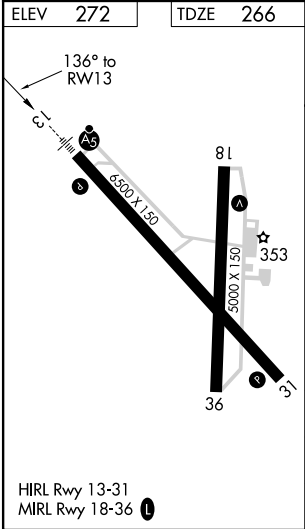
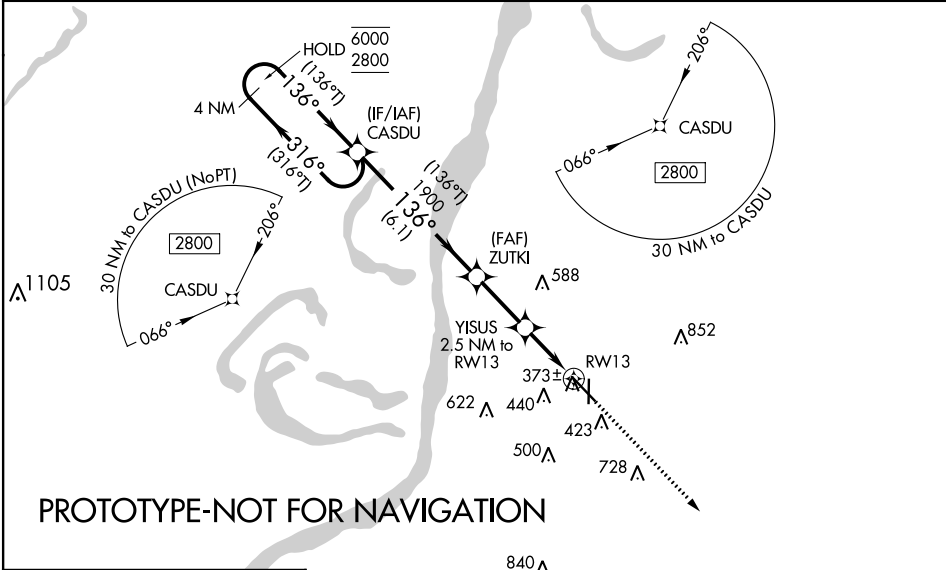


FIPC BASIC FORM						
PROCEDURE: RNAV (GPS) RWY 13 AMDT 1B			AIRPORT NAME: HARDY-ANDERS FIELD NATCHEZ-		AIRPORT ID: KHEZ	SPECIAL CONTROL NO: AG-02-019-20
FAC ID: KHEZ13.01		CITY: NATCHEZ			ST: MS	ORIG CHART DATE: 05/21/2020
DFL TYPE: PROC/S	THIRD PARTY: <input type="checkbox"/> YES	EST. TIME ON SITE: 0.4	REIMB. NUMBER:	PTS TASK ID:		
PREFLIGHT NOTES						
REVIEWER:					DATE:	
COMMENTS:					CHECK ONE: <input type="checkbox"/> FLT CK REQ <input type="checkbox"/> NFCR <input type="checkbox"/> REJECT	
					YES	NO
					CPV COMPLETE?	
PROCEDURE RESULTS						
INSPECTION DATE: 03/12/2020	CREW #: VN064	N #: N89	INSTRUMENT PROCEDURE STATUS: <input checked="" type="checkbox"/> SAT <input type="checkbox"/> SAT W/CHANGES <input type="checkbox"/> UNSAT		ARINC CODING: <input type="checkbox"/> SAT <input type="checkbox"/> SAT/GOLD <input type="checkbox"/> UNSAT	
FLIGHT INSPECTOR SIGNATURE: william r geiser @ 03/12/2020 16:56			PRINTED NAME: GEISER, WILLIAM RAY			NOTAM INITIATED? <input type="checkbox"/> YES <input checked="" type="checkbox"/> NO
FLIGHT INSPECTOR REMARKS: None						
IN-FLIGHT OBSTACLE REPORT						
OBSTRUCTION ID #:	COORDINATES OR LOCATION:	GNSS ALTITUDE (MSL):	BAROMETRIC ALTITUDE (MSL):	HEIGHT ABOVE GROUND LEVEL:		

WAAS CH 50505 W13A	APP CRS 136°	Rwy Idg 6500 TDZE 266 Apt Elev 272
--	------------------------	---

RNAV (GPS) RWY 13
HARDY-ANDERS FIELD NATCHEZ-ADAMS COUNTY (HEZ)

RNP APCH		<div>MALSR</div> <div></div>	MISSED APPROACH: Climb to 2800 direct WEGRA and hold.
<div><div><div>▼</div><div>▲</div></div><div>Circling to Rwy 36 NA at night. For uncompensated Baro-VNAV systems, LNAV/VNAV NA below -15° C or above 54° C. For inop ALS, increase LNAV/VNAV all Cats visibility to 3/8 SM and LNAV Cat C and D visibility to 1 1/8 SM.</div></div>			
AWOS-3PT 124.675	HOUSTON CENTER 120.975 299.6	UNICOM 122.8 (CTAF) 0	



OLD

NATCHEZ, MISSISSIPPI

AL-967 (FAA)

19115


WAAS CH 50505 W13A	APP CRS 136°	Rwy ldg 6500 TDZE 266 Apt Elev 272
--	------------------------	---

RNAV (GPS) RWY 13


HARDY-ANDERS FIELD NATCHEZ-ADAMS COUNTY (HE/Z)

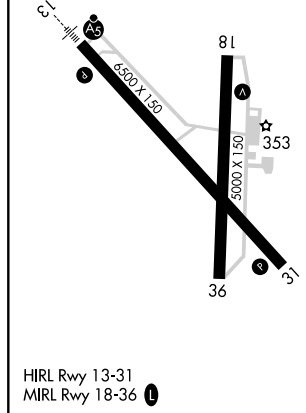
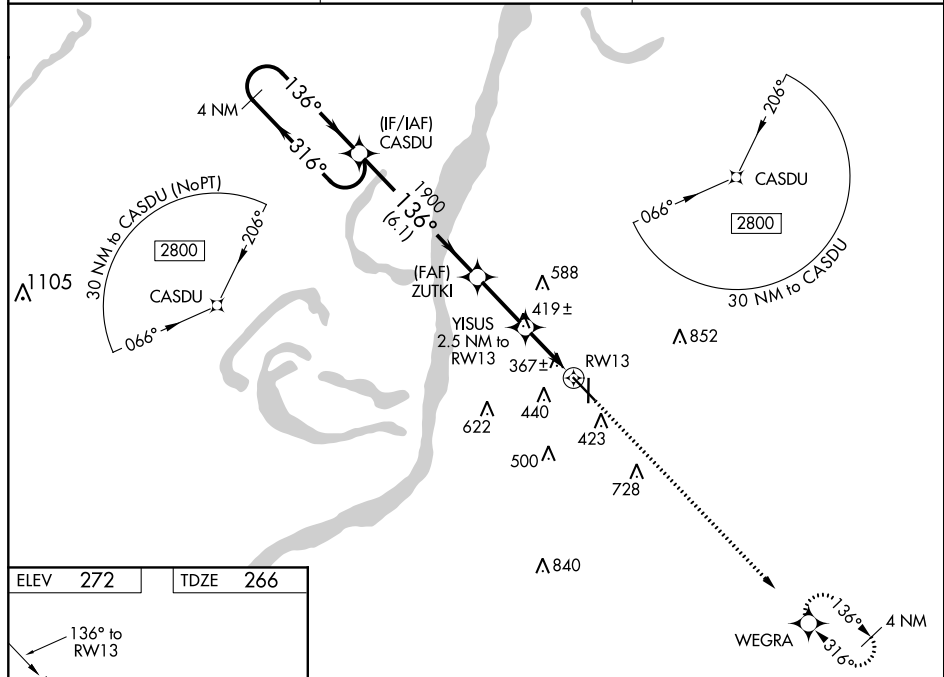
▼ For uncompensated Baro-VNAV systems, LNAV/VNAV NA below -15°C (5°F) or above 54°C (130°F). DME/DME RNP-0.3 NA. Baro VNAV and VDP NA when using Vicksburg Tallulah Rgnl altimeter setting. When local altimeter setting not received, use Vicksburg Tallulah Rgnl altimeter setting: increase all DA 133 feet, all MDA 140 feet, increase LPV visibilities all Cats 1/8 mile, LNAV/VNAV all Cats and LNAV Cats C/D visibilities 3/8 mile and Circling Cats C/D 1/4 mile. For inop MALS, increase LNAV/VNAV all Cats visibility to 3/8 and LNAV Cats C and D visibility to 1/8. For inop MALS, when using Vicksburg Tallulah Rgnl altimeter setting, increase LPV all Cats visibility to 1/8 and LNAV/VNAV all Cats visibility to 1/4.


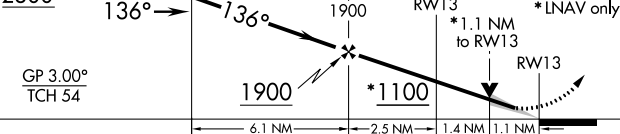
MALS



MISSED APPROACH:
Climb to 2800 direct WEGRA and hold.

AWOS-3PT 124.675	HOUSTON CENTER 120.975 299.6	UNICOM 122.8 (CTAF) 
----------------------------	--	---



4 NM Holding Pattern CASDU				
				
GP 3.00° TCH 54				
				
* 1.1 NM to RWY 13				
* LNAV only.				
CATEGORY	A	B	C	D
LPV DA	466-1/2		200 (200-1/2)	
LNAV/VNAV DA	534-1/2		268 (300-1/2)	
LNAV MDA	680-1/2 414 (500-1/2)		680-3/4 414 (500-3/4)	
CIRCLING	740-1 468 (500-1)	800-1 528 (600-1)	800-1 1/2 528 (600-1 1/2)	840-2 568 (600-2)

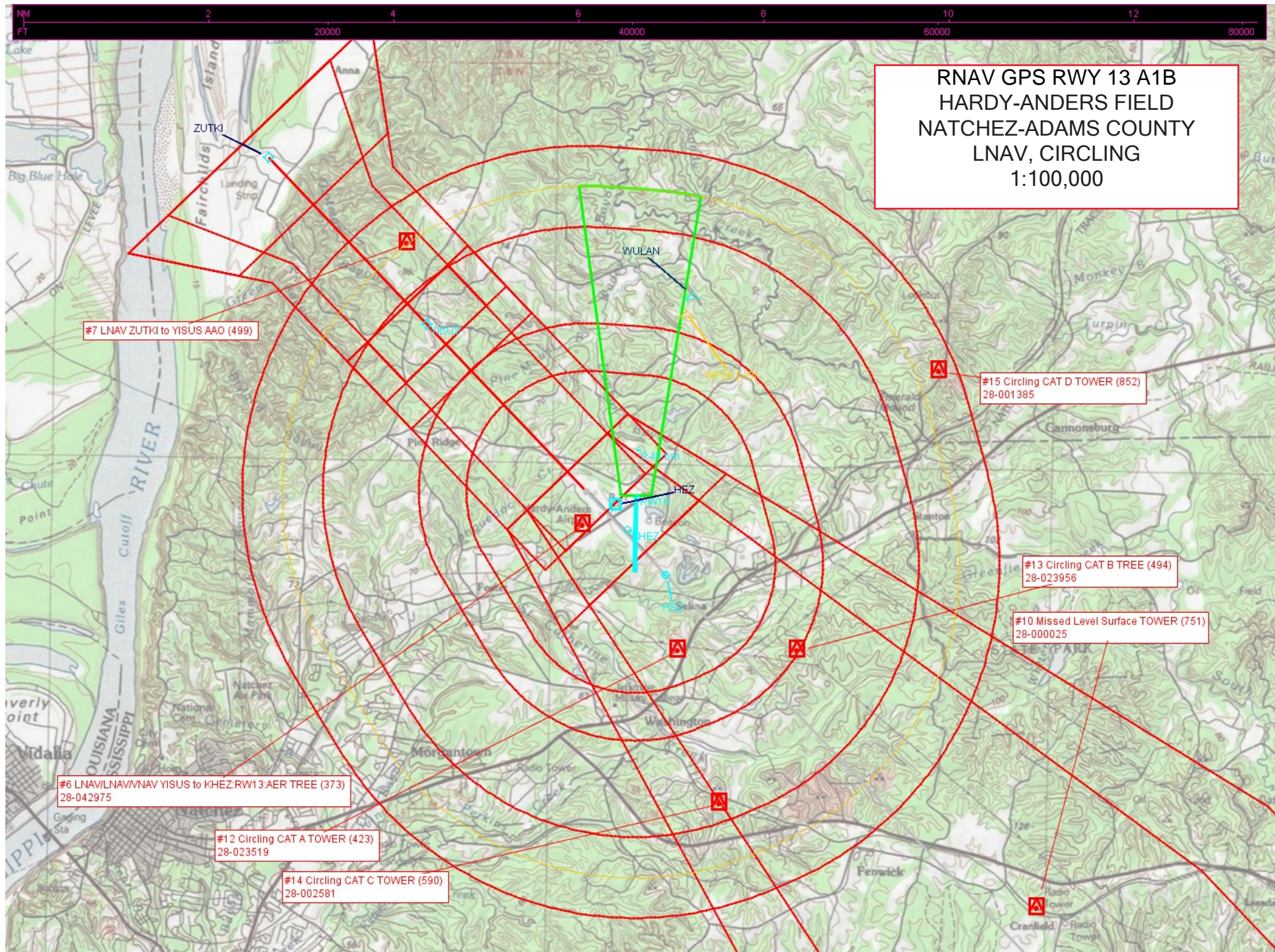
NATCHEZ, MISSISSIPPI
Amdt 1A 23JUN16

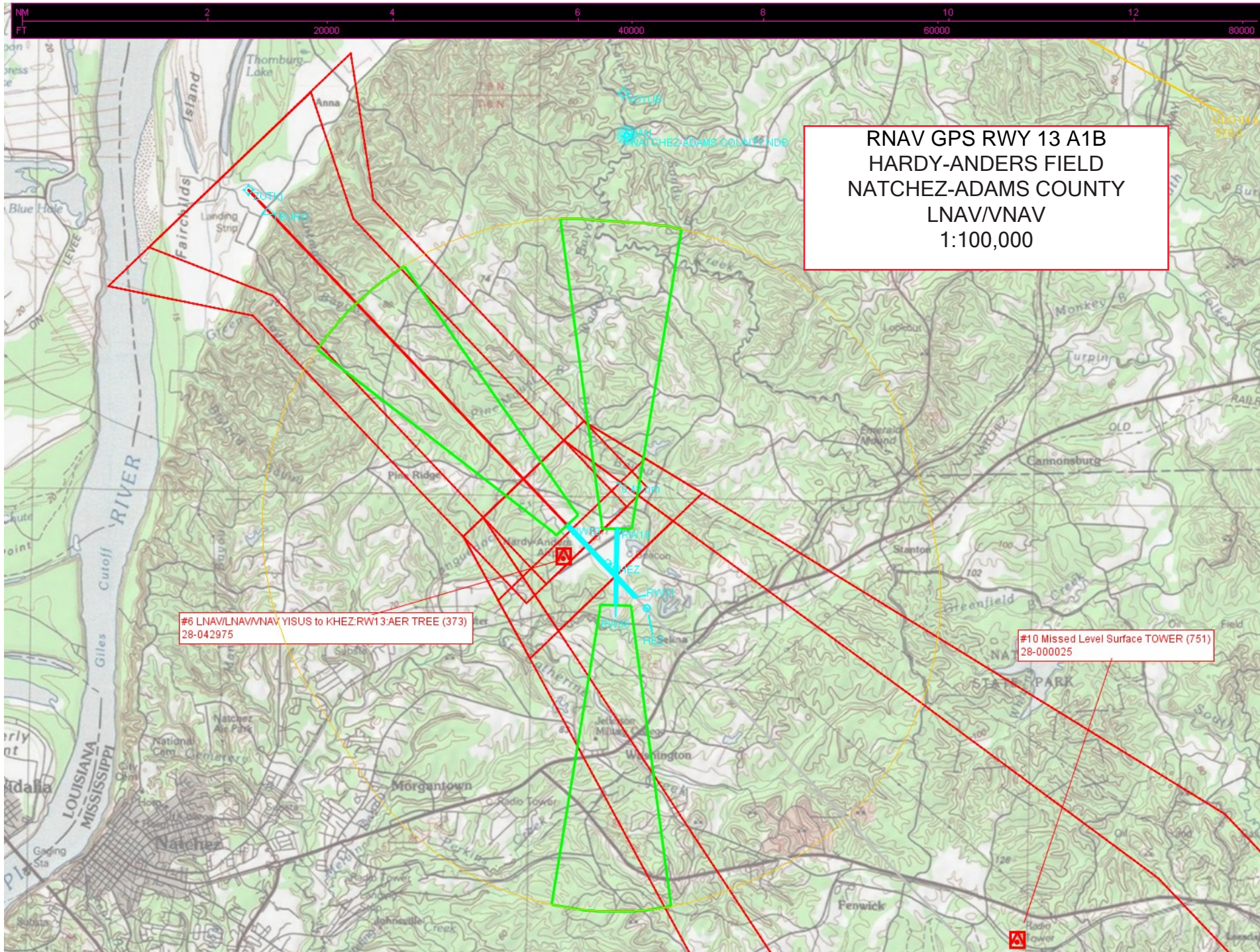
HARDY-ANDERS FIELD NATCHEZ-ADAMS COUNTY (HE/Z)
31°37'N-91°18'W

RNAV (GPS) RWY 13

SC-4, 10 OCT 2019 to 07 NOV 2019

SC-4, 10 OCT 2019 to 07 NOV 2019





RNAV GPS RWY 13 A1B
HARDY-ANDERS FIELD
NATCHEZ-ADAMS COUNTY
LNAV/VNAV
1:100,000

#6 LNAV/VNAV/VISUS to KHEZ:RW13:AER TREE (373)
28-042975

#10 Missed Level Surface TOWER (751)
28-000025

