

Flight Procedures Cover Page	Task Action: P-NOTAM	Task Type: IAP	Estimated Chart Date: 01/27/2022	APWS Task ID: D62191980C414587966F972A71CF31B6	APWS Project ID: D8D71AE0933C4B778839BA2265FCF798
Procedure: RNAV (GPS) RWY 8 AMDT 1D		Enroute: NO	Specialist: Boone-walt, Rose		Agreement Number:
Airport ID: KBVX			Airport City: BATESVILLE		State: AR
Facility ID:	Facility Type:	Flight Inspection Remark Type:			
<div>Procedure Comments: PNOTAM CIRCLING RADII INCREASE CONTACT: JASON KRETSCHMER AJV-A421 LEAD: 405.954.4019</div> <div><div>Digitally signed by JASON KRETSCHMER Dec 10, 2021</div><div><div>QUALITY 9 CHECKED</div><div>QUALITY 47 CHECKED</div></div></div>					

19059

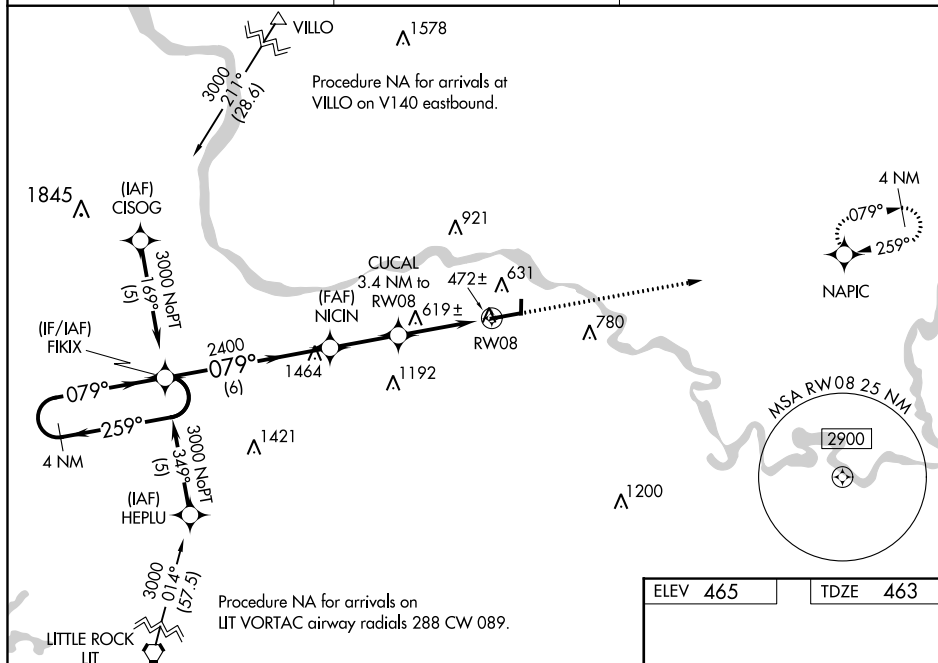
RNAV (GPS) RWY 8
BATESVILLE RGNL (BVX)

T
A

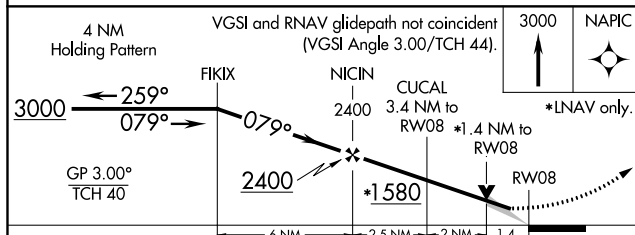
Circling NA N of Rwy 8-26.
For uncompensated Baro-VNAV systems,
LNAV/VNAV NA below -15°C or above 54°C.

MISSED APPROACH: Climb to 3000 direct NAPIC and hold

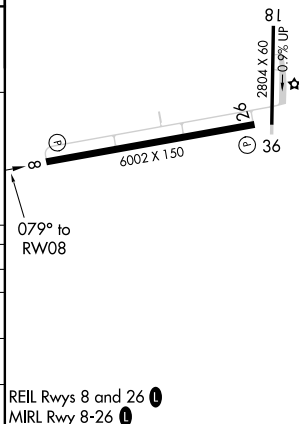
UNICOM
122.8 (CTAF) **L**



ELEV 465		TDZE 463
----------	--	----------



CATEGORY	A	B	C	D
LPV DA	713-1 250 (300-1)			
LNAV/ VNAV DA	802-1¼ 339 (400-1¼)			
LNAV MDA	940-1 477 (500-1)	940-1¾ 477 (500-1¾)	940-1½ 477 (500-1½)	
CIRCLING	980-1 515 (600-1)	980-1½ 515 (600-1½)	1040-2 575 (600-2)	



BATESVILLE RGNL (BVX)
RNAV (GPS) RWY 8

SC-1, 02 DEC 2021 to 30 DEC 2021

