

Flight Procedures Cover Page	Task Action: Cancellation	Task Type: IAP	Estimated Chart Date: 11/03/2022	APWS Task ID: D5C617D38ED64C71B9AF64F1FED926C2	APWS Project ID: 5A12B23E8E1F4CF59A699CE29F39D647
Procedure: NDB RWY 20 ORIG		Enroute: NO	Specialist: Moore, Frank		Agreement Number:
Airport ID: KUNU			Airport City: JUNEAU		State: WI
Facility ID:	Facility Type:	Flight Inspection Remark Type:			
Procedure Comments: CONTACT DAVE TEFFETELLER 202-267-5177					

OLD

JUNEAU, WISCONSIN

AL-5452 (FAA)

21224

NDB UNU	APP CRS	Rwy Idg	4028
344	209°	TDZE	934
		Apt Elev	934

NDB RWY 20
DODGE COUNTY (UNU)

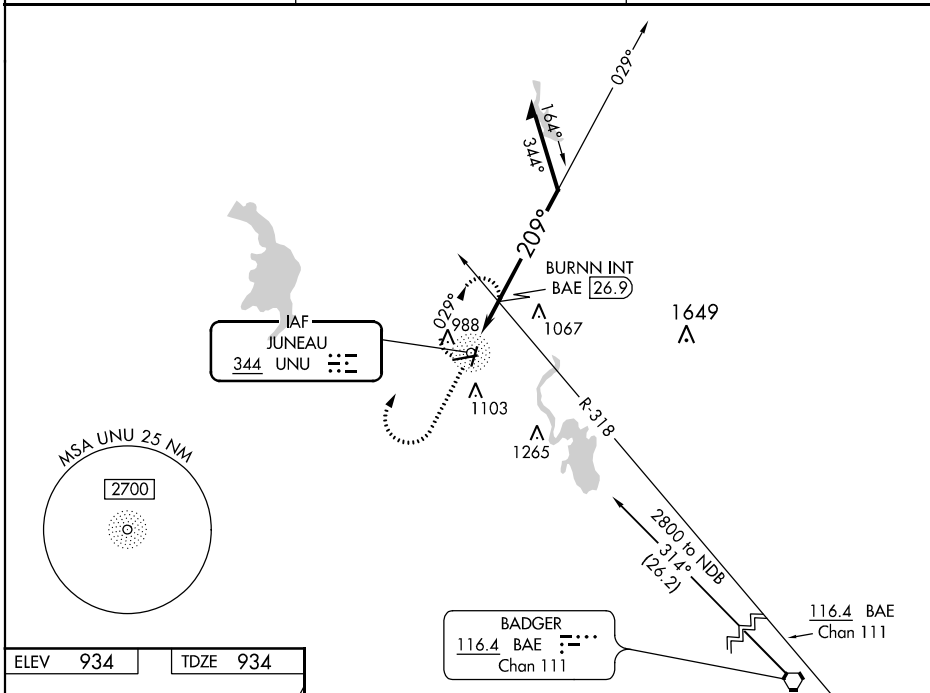
▼ If local altimeter setting not received, use Dane County Rgnl-Truax
Fld altimeter setting and increase all MDAs 100 feet.
▲ Visibility reduction by helicopters NA.

MISSED APPROACH: Climb to 2000 then
climbing right turn to 2700 direct UNU NDB
and hold.

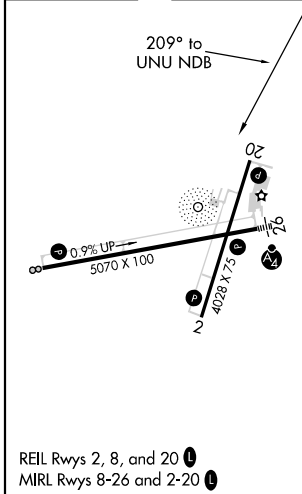
AWOS-3
120.825

MADISON APP CON
119.15 343.7

UNICOM
122.7 (CTAF) 1



ELEV 934 TDZE 934



REIL Rwy 2, 8, and 20 1
MIRL Rwy 8-26 and 2-20 1

2000	2700	UNU	UNU NDB	VGSI and descent angles not coincident (VGSI Angle 3.00/TCH 25).
				Remain within 10 NM
				BURN INT BAE 26.9
				2.96° TCH 40
				*1540
				2.2 NM
CATEGORY	A	B	C	D
S-20	1540-1	606 (700-1)	1540-1 ³ / ₄ 606 (700-1 ³ / ₄)	NA
CIRCLING	1540-1	606 (700-1)	1540-1 ³ / ₄ 606 (700-1 ³ / ₄)	NA
BURN INT FIX MINIMUMS				
S-20	1420-1	486 (500-1)	1420-1 ¹ / ₄ 486 (500-1 ¹ / ₄)	NA
CIRCLING	1440-1	506 (600-1)	1440-1 ¹ / ₂ 506 (600-1 ¹ / ₂)	NA

JUNEAU, WISCONSIN
Orig 10MAY07

43°26'N-88°42'W

DODGE COUNTY (UNU)
NDB RWY 20

EC-3, 21 APR 2022 to 19 MAY 2022

EC-3, 21 APR 2022 to 19 MAY 2022