

| | | | | | |
|--|-------------------------|--------------------------------|--|---|--|
| Flight Procedures Cover Page | Task Action: P-NOTAM | Task Type: IAP | Estimated Chart Date: 12/28/2023 | APWS Task ID: D53CFB03781245FA803C753878A4F6DE | APWS Project ID: 4DF19007D682402C8A135E9F1BCBB5D1 |
| Procedure: ILS OR LOC RWY 20 AMDT 8D | | Enroute: NO | Specialist: Boone-walt, Rose | | Agreement Number: |
| Airport ID: KBAF | | | Airport City: WESTFIELD/SPRINGFIELD | | State: MA |
| Facility ID: | Facility Type: | Flight Inspection Remark Type: | | | |
| <div>Procedure Comments: Processed IAW Technical Support Group (AJF-17) Memo dated 07/07/2021, Subject: Guidance for Procedural Changes Requiring Flight Inspection/Validation CONTACT: JASON KRETSCHMER AJV-A421 LEAD: 405.954.4019 <div>Digitally signed by JASON KRETSCHMER Oct 03, 2023</div></div> | | | | | |
| <div><div>QUALITY 38 CHECKED</div><div>QUALITY 13 CHECKED</div></div> | | | | | |

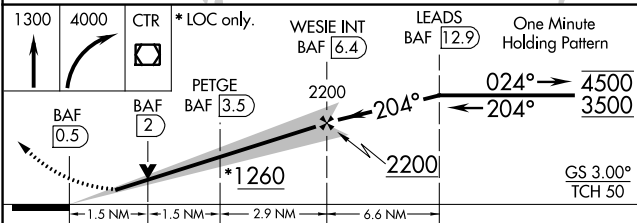
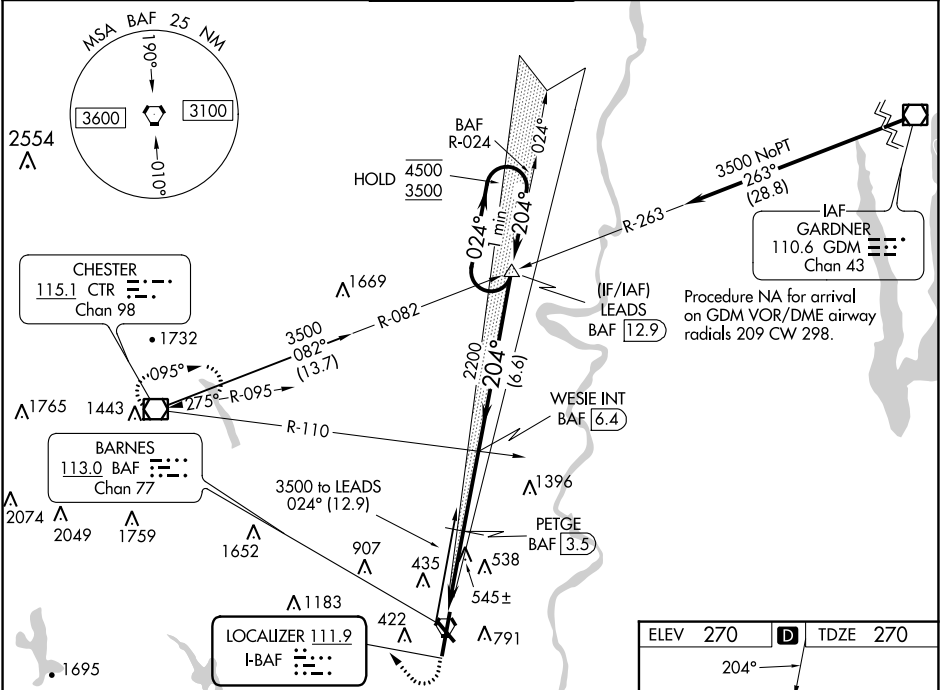
| | | |
|--------------|-------------|-------------|
| LOC I-BAF | APP CRS | Rwy Idg |
| 111.9 | 204° | 8919 |
| | | TDZE |
| | | 270 |
| | | Apt Elev |
| | | 270 |

OLD

ILS or LOC RWY 20
WESTFIELD-BARNES RGNL (BAF')

| | | |
|---|-----------------------------------|--|
| <p>⚠ Circling Rwy 15 NA at night. DME from BAF VORTAC. DME use requires simultaneous reception of I-BAF and BAF DME. For inop ALS, increase S-ILS 20 Cat E visibility to RVR 4000; increase S-LOC 20 Cat E visibility to 3 SM; increase PETGE fix minimums S-LOC 20 Cat E visibility to 1½ SM.</p> | <p>MALSR AS</p> | <p>MISSED APPROACH: Climb to 1300 then climbing right turn to 4000 direct CTR VOR/DME and hold, continue climb-in-hold to 4000.</p> |
|---|-----------------------------------|--|

| | | | | |
|---------------------|---------------------|-----------------------------|--------------------|--------------|
| ATIS | BRADLEY APP CON | WESTFIELD TOWER ★ | GND CON | CLNC DEL |
| 127.1 263.15 | 125.35 281.5 | 118.9 (CTAF) 0 251.1 | 121.7 289.4 | 121.7 |



| CATEGORY | A | B | C | D | E |
|-----------------------------------|--------------------------|--------------------------|-------------------------|----------------------|---|
| S-ILS 20 | 520/24 250 (300-½) | | | | |
| S-LOC 20 | 1260/40 990 (1000-¾) | 1260/55 990 (1000-1) | 1260-2½ | 990 (1000-2½) | |
| CIRCLING | 1260-1¼ 990 (1000-1¼) | 1260-1½ 990 (1000-1½) | 1260-3 990 (1000-3) | 1660-3 1390 (1400-3) | |
| PETGE FIX MINIMUMS (DME REQUIRED) | | | | | |
| S-LOC 20 | 800/24 | 530 (600-½) | 800/55 | 530 (600-1) | |
| CIRCLING | 1160-1¼ | 890 (900-1¼) | 1160-2¾ 890 (900-2¾) | 1660-3 1390 (1400-3) | |

