

Flight Procedures Cover Page	Task Action: FLIGHT CHECK	Task Type: IAP	Estimated Chart Date: 12/02/2021	APWS Task ID: D3F393A9BE3F4F09B49378013318F420	APWS Project ID: 51663BB275B841519856972D5B47AC41
Procedure: RNAV (GPS) RWY 13 AMDT 1		Enroute: NO	Specialist: Jensen, Leah		Agreement Number:
Airport ID: KHCO			Airport City: HALLOCK		State: MN
Facility ID:	Facility Type:	Flight Inspection Remark Type: New FC Slot			
<p><b>Procedure Comments:</b> ACTIVE AIRNAV DATA USED FOR KHCO.</p> <p>REMOVED HML VORTAC FROM THE IF/IAF AND RELOCATED IF/IAF WITH NEW FIX FESNI DUE TO HML VOR MON.</p> <p>REMOVED ZOMTA IAF.</p> <p>ADDED TAA AT NEW FIX FESNI.</p> <p>CONTACT ALLAN WILL: AJV-A423, (405) 954-6103</p>					

J ZEDER 08/09/2021

QUALITY  
16  
CHECKED

QUALITY  
38  
CHECKED

<b>FIPC BASIC FORM</b>							
<b>PROCEDURE:</b> RNAV (GPS) RWY 13 AMDT 1			<b>AIRPORT NAME:</b> HALLOCK MUNI		<b>AIRPORT ID:</b> KHCO	<b>SPECIAL CONTROL NO:</b> BG-08-109-21	
<b>FAC ID:</b> KHCO13.01		<b>CITY:</b> HALLOCK			<b>ST:</b> MN	<b>ORIG CHART DATE:</b> 12/02/2021	
<b>DFL TYPE:</b> PROC/S	<b>THIRD PARTY:</b> <input type="checkbox"/> YES	<b>EST. TIME ON SITE:</b> 0.4	<b>REIMB. NUMBER:</b> AC0721		<b>PTS TASK ID:</b>		
<b>PREFLIGHT NOTES</b>							
<b>REVIEWER:</b>					<b>DATE:</b>		
<b>COMMENTS:</b>					<b>CHECK ONE:</b>		
					<input type="checkbox"/> FLT CK REQ <input type="checkbox"/> NFCR <input type="checkbox"/> REJECT		
							<b>YES</b>
					<b>CPV COMPLETE?</b>		<b>X</b>
<b>PROCEDURE RESULTS</b>							
<b>INSPECTION DATE:</b> 08/27/2021		<b>CREW #:</b> VN428	<b>N #:</b> N85	<b>INSTRUMENT PROCEDURE STATUS:</b> <input checked="" type="checkbox"/> SAT <input type="checkbox"/> SAT W/CHANGES <input type="checkbox"/> UNSAT		<b>ARINC CODING:</b> <input checked="" type="checkbox"/> SAT <input type="checkbox"/> SAT/GOLD <input type="checkbox"/> UNSAT	
<b>FLIGHT INSPECTOR SIGNATURE:</b> jeremy leighton @ 08/31/2021 07:30			<b>PRINTED NAME:</b> LEIGHTON, JEREMY CURTIS			<b>NOTAM INITIATED?</b> <input type="checkbox"/> YES <input checked="" type="checkbox"/> NO	
<b>FLIGHT INSPECTOR REMARKS:</b> Missed approach graphic climb altitude incorrect on FIG. Text description climb altitude is correct on FIG.							
<b>IN-FLIGHT OBSTACLE REPORT</b>							
<b>OBSTRUCTION ID #:</b>	<b>COORDINATES OR LOCATION:</b>		<b>GNSS ALTITUDE (MSL):</b>		<b>BAROMETRIC ALTITUDE (MSL):</b>		<b>HEIGHT ABOVE GROUND LEVEL:</b>

WAAS CH <b>40333</b> <b>W13A</b>	APP CRS <b>135°</b>	Rwy Idg TDZE Apt Elev	<b>4007</b> <b>820</b> <b>820</b>
--	------------------------	-----------------------------	---

# RNAV (GPS) RWY 13

HALLOCK MUNI (HCO)

RNP APCH - GPS.

**T** Baro-VNAV NA when using Grafton Altimeter Setting. For uncompensated Baro-VNAV systems, LNAV/VNAV NA below -16°C or above 54°C. When local altimeter setting not received, use Grafton altimeter setting and increase LPV DA to 1082 feet; increase LNAV/VNAV DA to 1161 feet; increase all MDAs 80 feet and LNAV visibility Cat C ¼ SM, and Circling visibility Cat C ¼ SM.

MISSED APPROACH:  
Climb to 2800 direct  
HOGEB and hold.

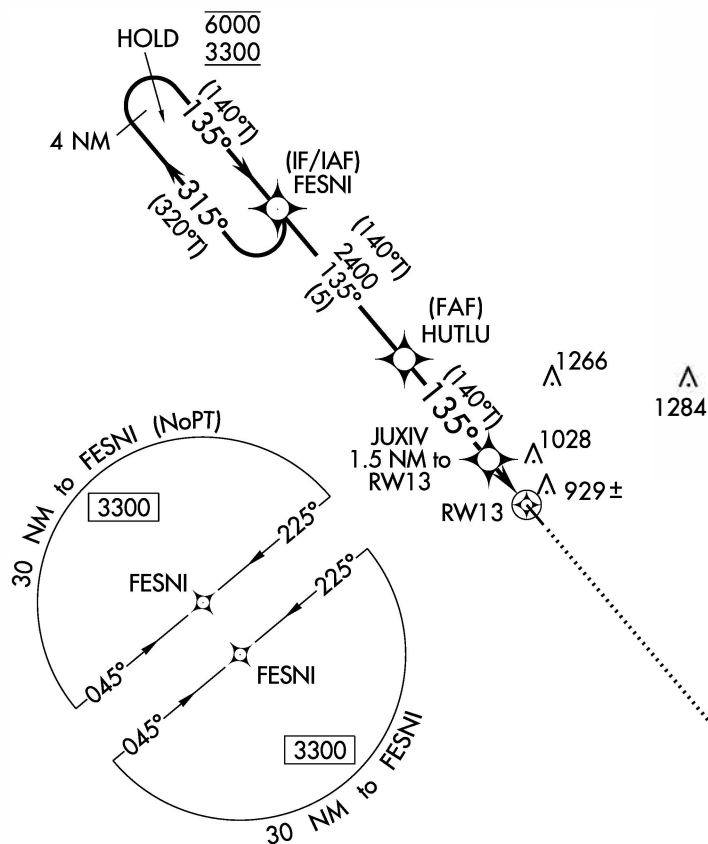
AWOS-3

**126.475**

MINNEAPOLIS CENTER

**132.15 269.6**

UNICOM

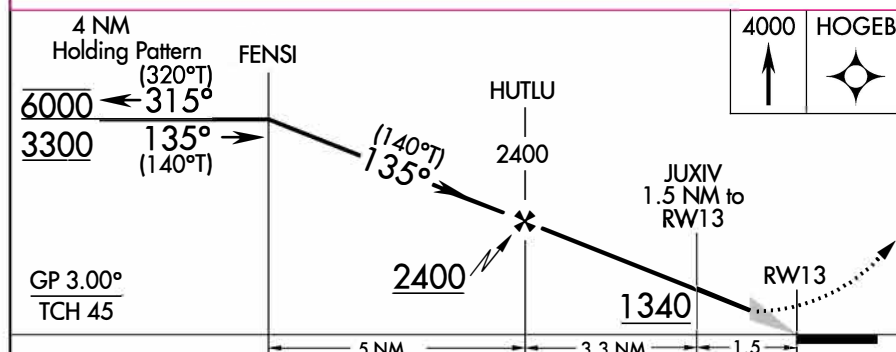
**122.8 (CTAF) 0**

MISSED APCH FIX

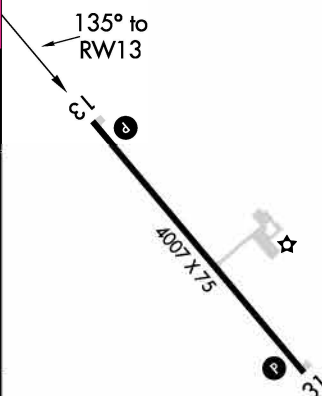


ELEV 820

TDZE 820



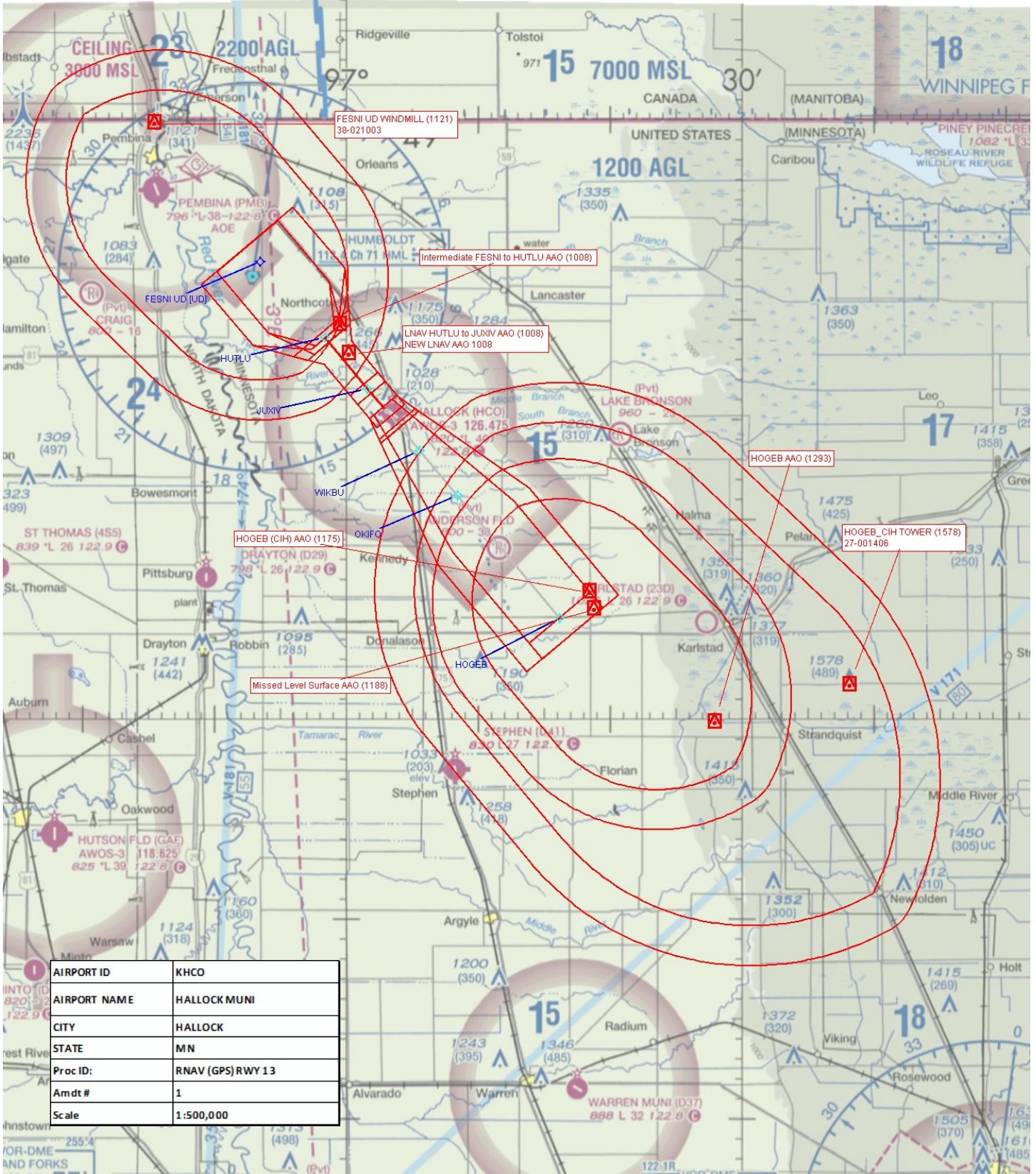
CATEGORY	A	B	C	D
LPV DA	1020-1	200 (200-1)		NA
LNAV/VNAV DA	1099-1	279 (300-1)		NA
LNAV MDA	1180-1	360 (400-1)		NA
<b>C</b> CIRCLING	1380-1	560 (600-1)	1380-1½ 560 (600-1½)	NA



REIL Rwy 13 and 31 0  
MIRL Rwy 13-31 0

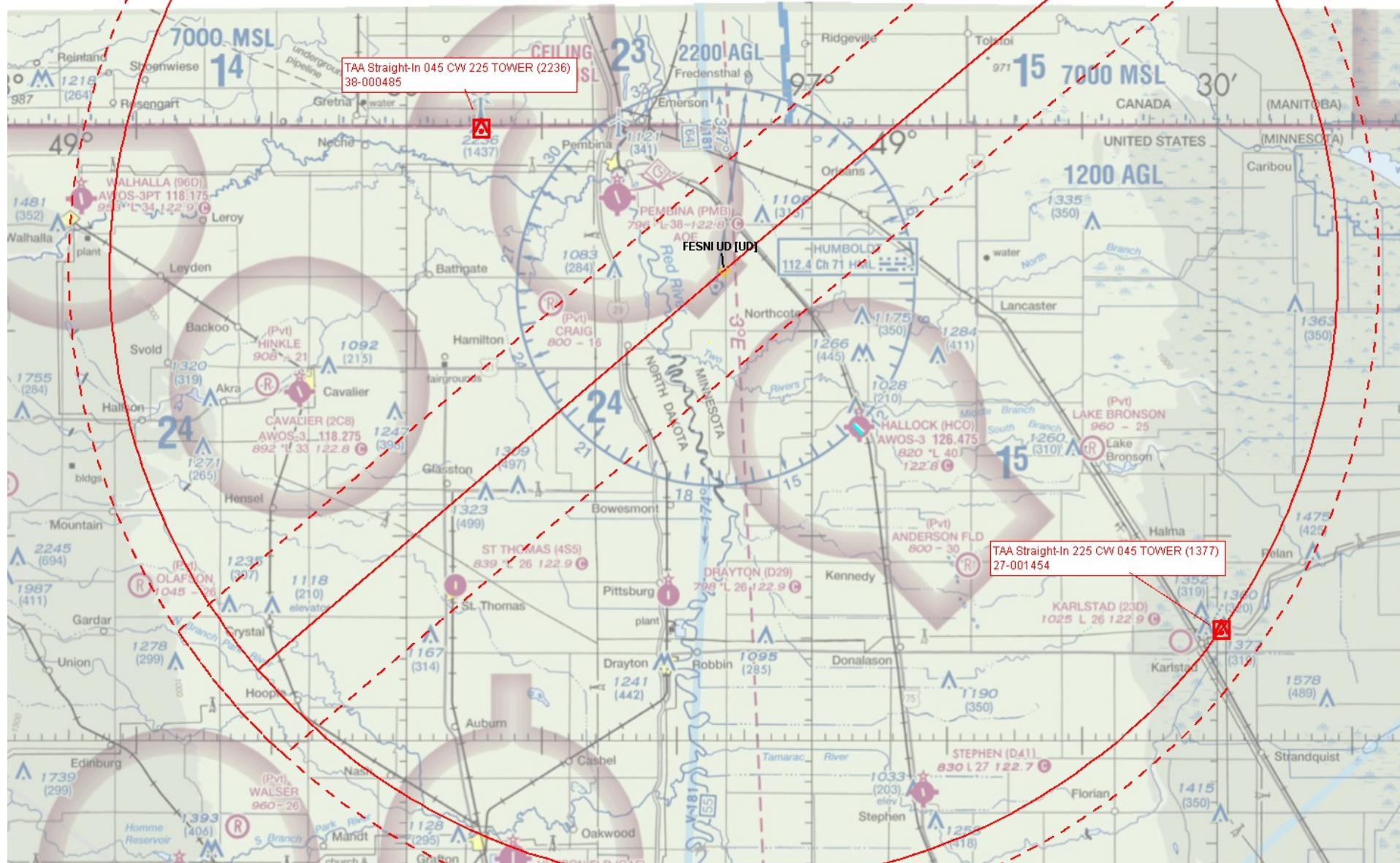


# CANADIAN BORDER (NO MAP AVAILABLE)

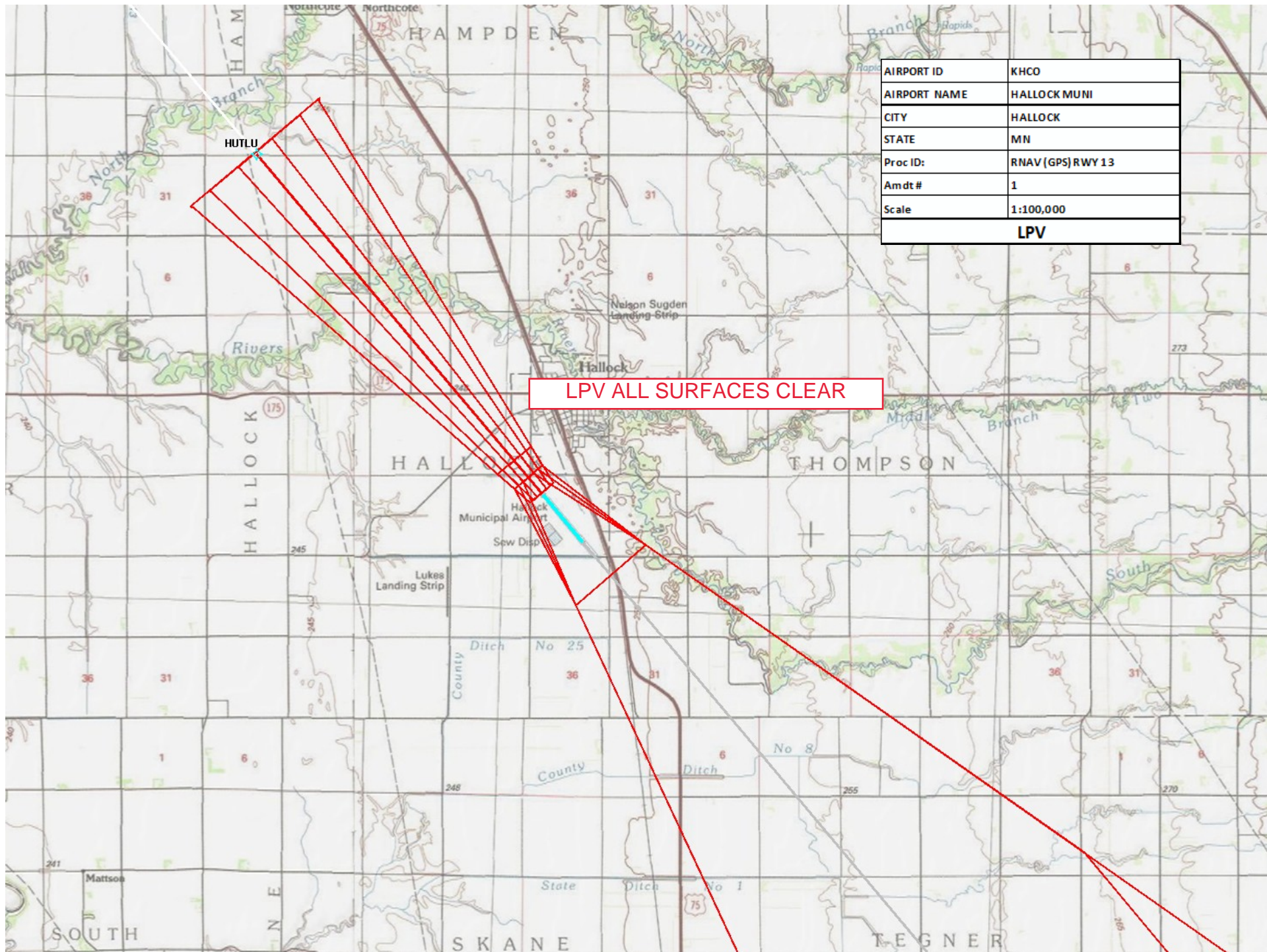




AIRPORT ID	KHCO
AIRPORT NAME	HALLOCK MUNI
CITY	HALLOCK
STATE	MN
Proc ID:	RNAV (GPS) RWY 13
Amdt #	1
Scale	1:500,000
TAA	

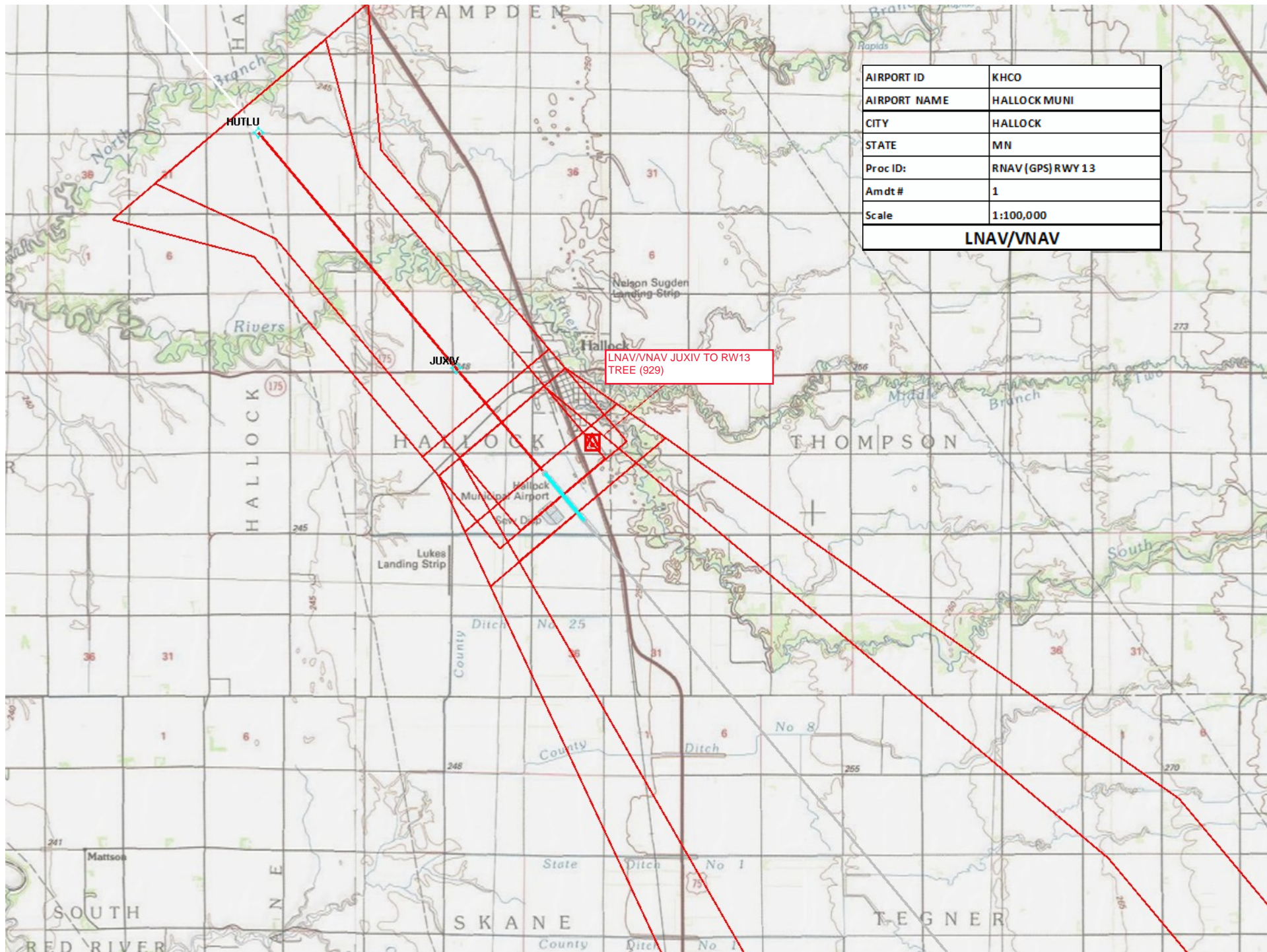






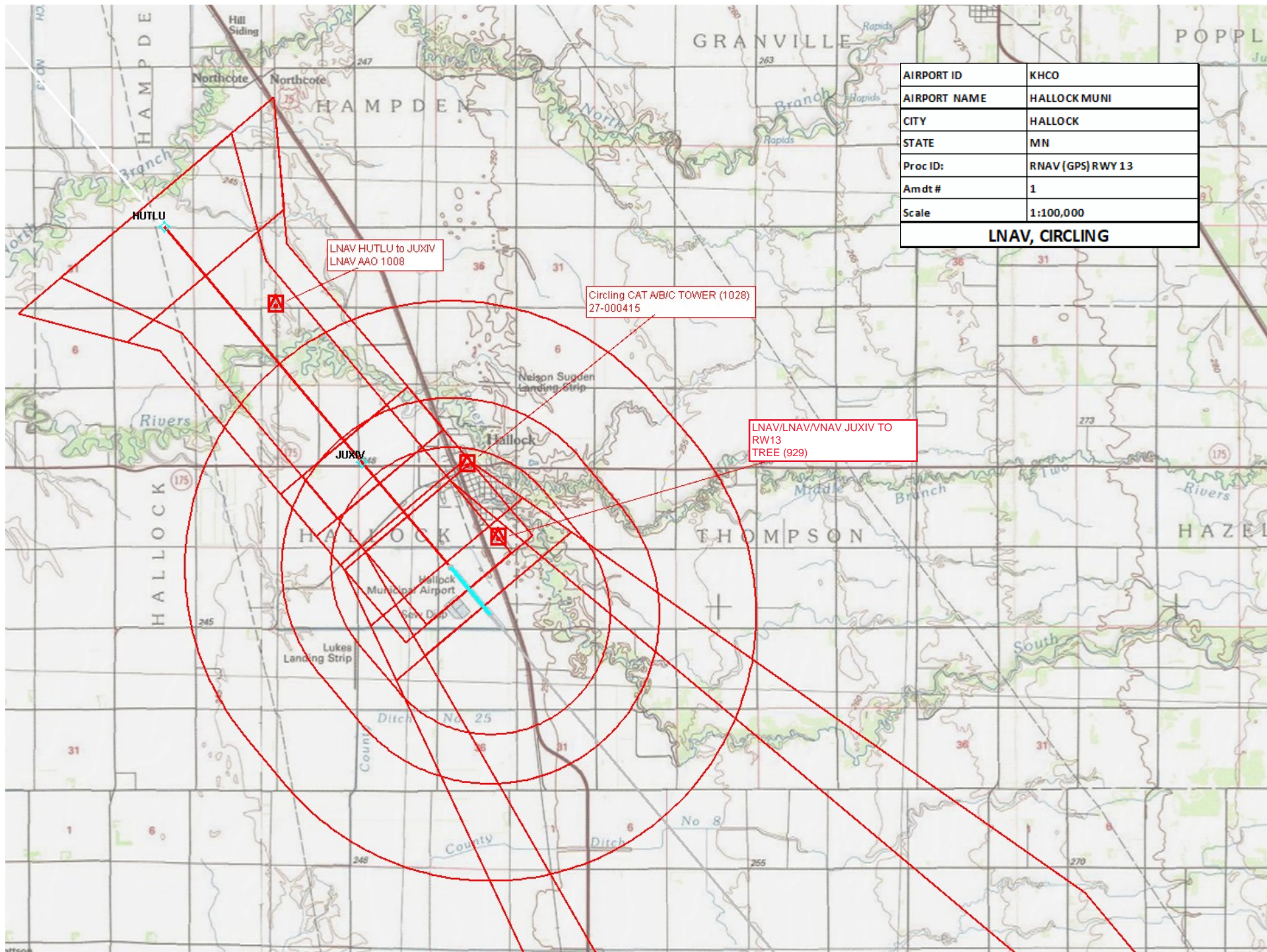
AIRPORT ID	KHCO
AIRPORT NAME	HALLOCK MUNI
CITY	HALLOCK
STATE	MN
Proc ID:	RNAV (GPS) RWY 13
Amdt #	1
Scale	1:100,000
LPV	





AIRPORT ID	KHCO
AIRPORT NAME	HALLOCK MUNI
CITY	HALLOCK
STATE	MN
Proc ID:	RNAV (GPS) RWY 13
Amdt #	1
Scale	1:100,000
LNAV/VNAV	





AIRPORT ID	KHCO
AIRPORT NAME	HALLOCK MUNI
CITY	HALLOCK
STATE	MN
Proc ID:	RNAV (GPS) RWY 13
Amdt #	1
Scale	1:100,000
LNAV, CIRCLING	