

Flight Procedures Cover Page	Task Action: Abbreviated Amendment	Task Type: IAP	Estimated Chart Date: 11/27/2025	APWS Task ID: D3A27E3CEBF5412E92F5EBCB38803E0D	APWS Project ID: 36C2D73819784174939915F820A2F4A8
Procedure: RNAV (GPS) RWY 10 AMDT 0C		Enroute: NO	Specialist: Denton, Hope		Agreement Number:
Airport ID: 4J2			Airport City: NASHVILLE		State: GA
Facility ID:	Facility Type:	Flight Inspection Remark Type:			
<div>Procedure Comments:</div> <div>UTILIZED ACTIVE DATA FOR K4J2 AIRPORT AND RUNWAYS.</div> <div>CANCELS NOTAM FDC 5/0051.</div> <div>PROCESSED IAW TECHNICAL SUPPORT GROUP (AJF-17) MEMO DATED 07/07/2021 GUIDANCE FOR PROCEDURAL CHANGES REQUIRING FLIGHT INSPECTION/VALIDATION.</div> <div>CONTACT CASIMIR TABAKA: AJV-A432, 405-202-7857.</div> <div>07/23/25: THIS IS AN UPDATED COPY OF THE FORM DEVELOPED ON: 06/10/25: 1. ADDED "CHART VAD ATIS" TO ADDITIONAL FLIGHT DATA. 2. LOWERED LNAV/VNAV DA /HAT ALL CATS FROM 793/553 TO 760/520. 3. LOWERED LNAV/VNAV VISIBILITIES ALL CATS FROM 1 5/8 TO 1 3/8.</div> <div>07/29/25: THIS IS A CORRECTED COPY OF THE FORM APPROVED ON 07/22/25. 1. CHANGED BACK UP ALTIMETER CHART NOTE FROM "USE VAD ALTIMETER SETTING; WHEN NOT RECEIVED, USE DQH ALTIMETER SETTING AND INCREASE LPV DA TO 584 FEET; INCREASE LNAV/VNAV DA TO 817 FEET; INCREASE ALL MDAS 40 FEET AND LNAV VISIBILITY CAT C 1/4 SM, AND CIRCLING VISIBILITY CAT C 1/4 SM" TO "USE VAD ALTIMETER SETTING; WHEN NOT RECEIVED, USE DQH ALTIMETER SETTING AND INCREASE LPV DA TO 584 FEET; INCREASE LNAV/VNAV DA TO 800 FEET AND ALL VISIBILITIES 1/4 SM; INCREASE ALL MDAS 40 FEET AND LNAV VISIBILITY CAT C 1/4 SM, AND CIRCLING VISIBILITY CAT C 1/4 SM".</div>					



WAAS CH 69438 W10A	APP CRS 096°	Rwy Idg TDZE Apt Elev	5002 240 240
----------------------------------------	------------------------	-----------------------------	-----------------------------------------

RNAV (GPS) RWY 10

BERRIEN COUNTY (4J2)



NA

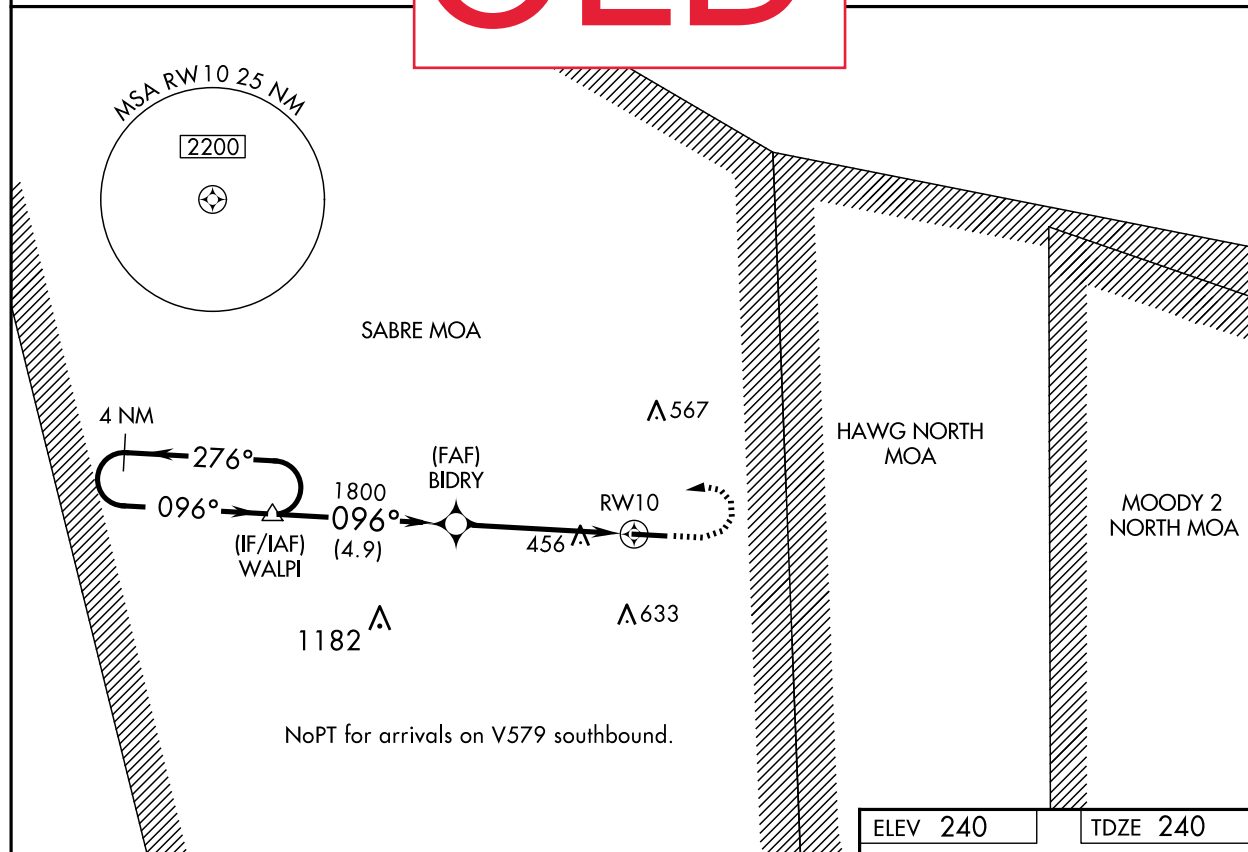
Baro-VNAV NA. DME/DME RNP-0.3 NA. Helicopter visibility reduction below $\frac{3}{4}$ SM NA. Use Moody AFB altimeter setting. When not received, use Douglas altimeter setting and increase all DA 24 feet and MDA 40 feet; increase LNAV/VNAV all Category visibility $\frac{1}{2}$ mile and increase LNAV Cat C and Circling Cat C vi

MISSED APPROACH: Climb to 800 then climbing left turn to 2200 direct WALPI and hold.

KVAD ATIS ★
273.5

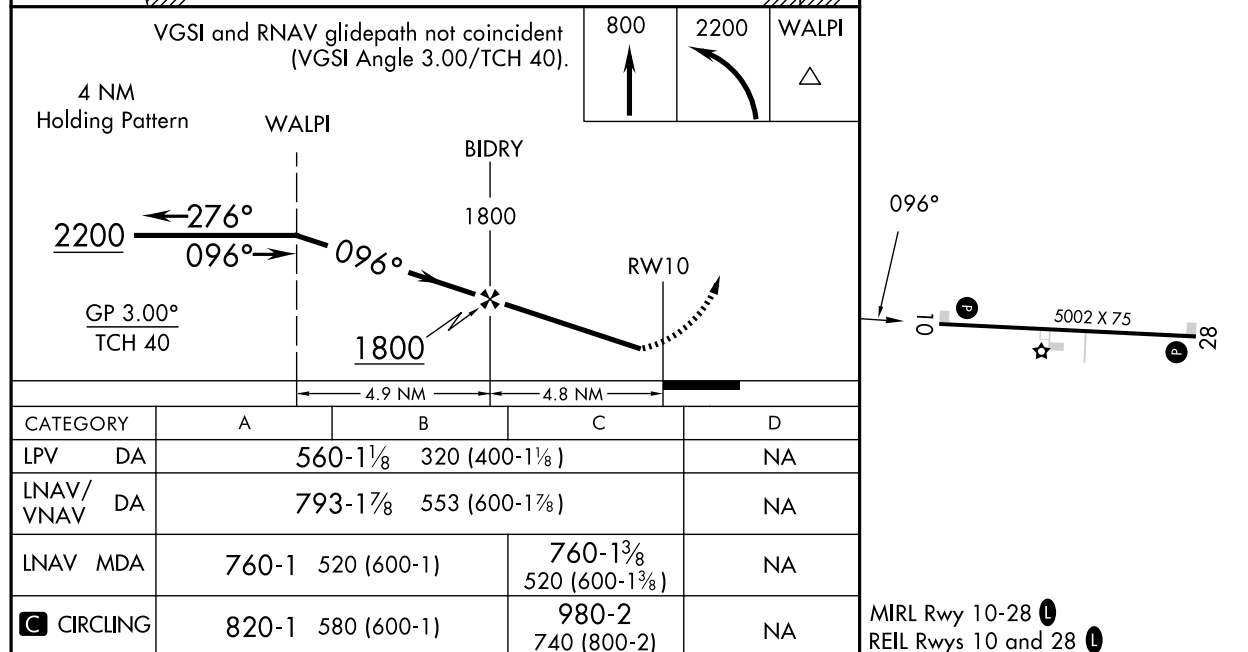
UNICOM
122.7 (CTAF) 0

OLD



SE-4, 15 MAY 2025 to 12 JUN 2025

SE-4, 15 MAY 2025 to 12 JUN 2025



AIRPORT ID: K4J2
AIRPORT NAME: BERRIEN COUNTY
CITY/STATE: NASHVILLE/GEORGIA
PROC ID: RNAV (GPS) RWY 10
AMDT: ORIG C
SCALE: 1:500,000

Missed Level Surface/HOLDING WALPI TOWER (683)
13-001755

Intermediate WALPI to BIDRY TOWER (1182)
13-000976

LNAV BIDRY to RW10 TOWER (456)
13-022408

AIRPORT ID: K4J2
AIRPORT NAME: BERRIEN COUNTY
CITY/STATE: NASHVILLE/GEORGIA
PROC ID: RNAV (GPS) RWY 10
AMDT: ORIG C
SCALE: 1:500,000

Missed Level Surface/HOLDING WALPI TOWER (683)
13-001755

LNAV BIDRY to RW10 TOWER (456)
13-022408

Intermediate WALPI to BIDRY TOWER (1182)
13-000976

AIRPORT ID: K4J2
AIRPORT NAME: BERRIEN COUNTY
CITY/STATE: NASHVILLE/GEORGIA
PROC ID: RNAV (GPS) RWY 10
AMDT: ORIG C
SCALE: 1:500,000

Missed Level Surface/HOLDING WALPI TOWER (683)
13-001755

Intermediate WALPI to BIDRY TOWER (1182)
13-000976

LNAV BIDRY to RW10 TOWER (456)
13-022408

AIRPORT ID: K4J2
AIRPORT NAME: BERRIEN COUNTY
CITY/STATE: NASHVILLE/GEORGIA
PROC ID: RNAV (GPS) RWY 10
AMDT: ORIG C
SCALE: 1:500,000

Missed Level Surface/HOLDING WALPI TOWER (683)
13-001755

LNNAV BIDRY to RW10 TOWER (456)
13-022408

Intermediate WALPI to BIDRY TOWER (1182)
13-000976

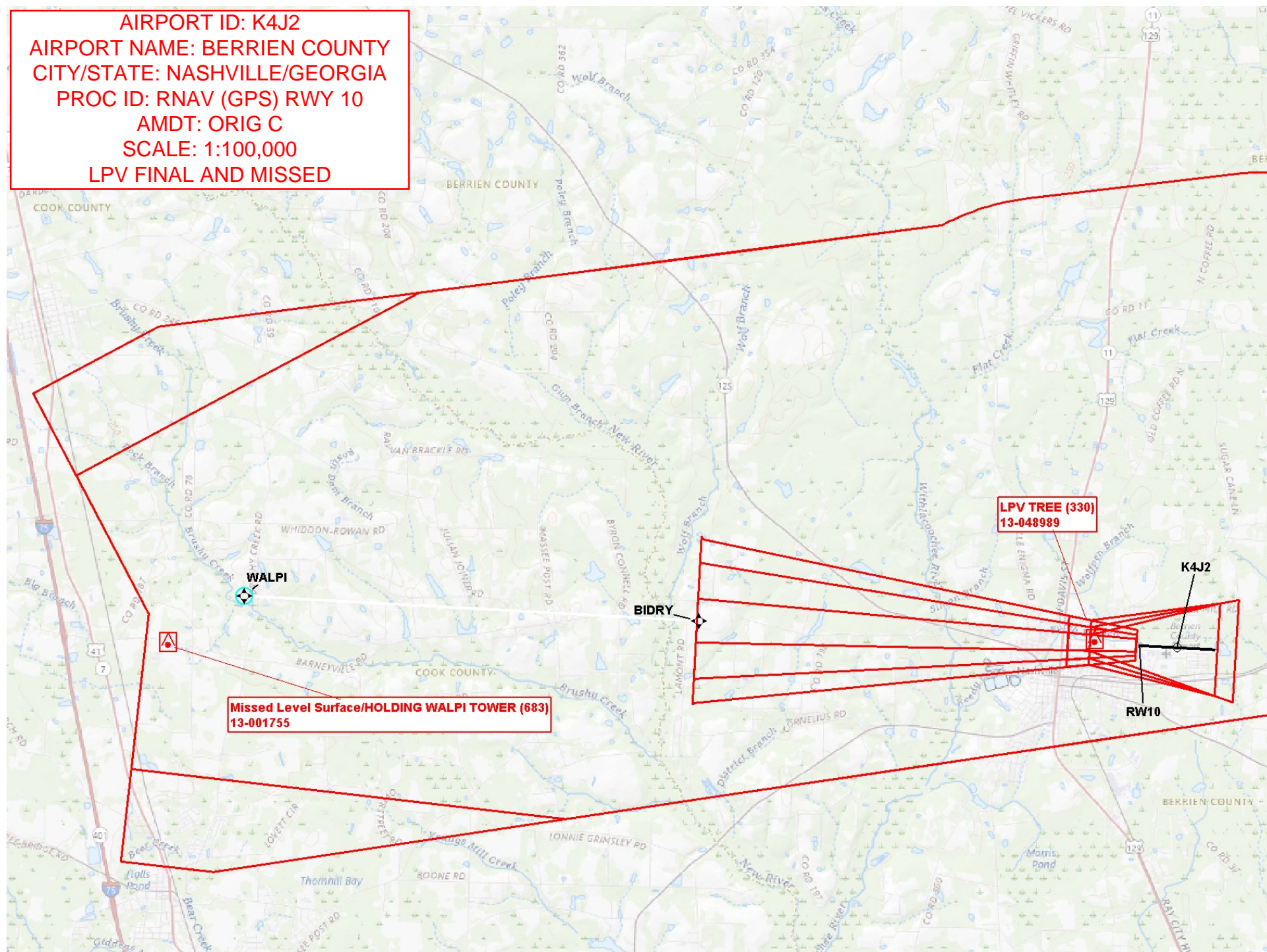
AIRPORT ID: K4J2
AIRPORT NAME: BERRIEN COUNTY
CITY/STATE: NASHVILLE/GEORGIA
PROC ID: RNAV (GPS) RWY 10
AMDT: ORIG C
SCALE: 1:500,000

Missed Level Surface/HOLDING WALPI TOWER (683)
13-001755

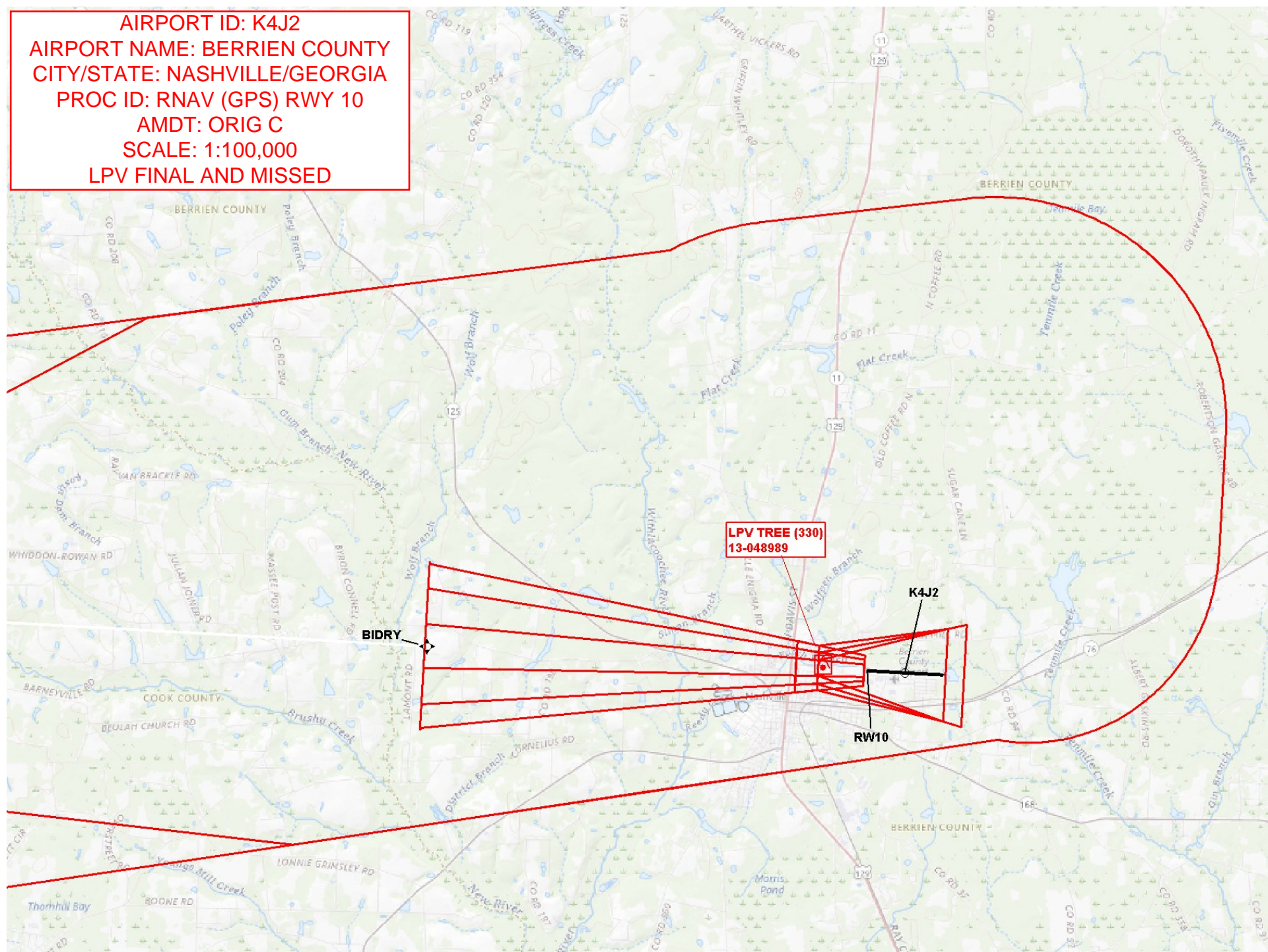
LNNAV BIDRY to RW10 TOWER (456)
13-022408

Intermediate WALPI to BIDRY TOWER (1182)
13-000976

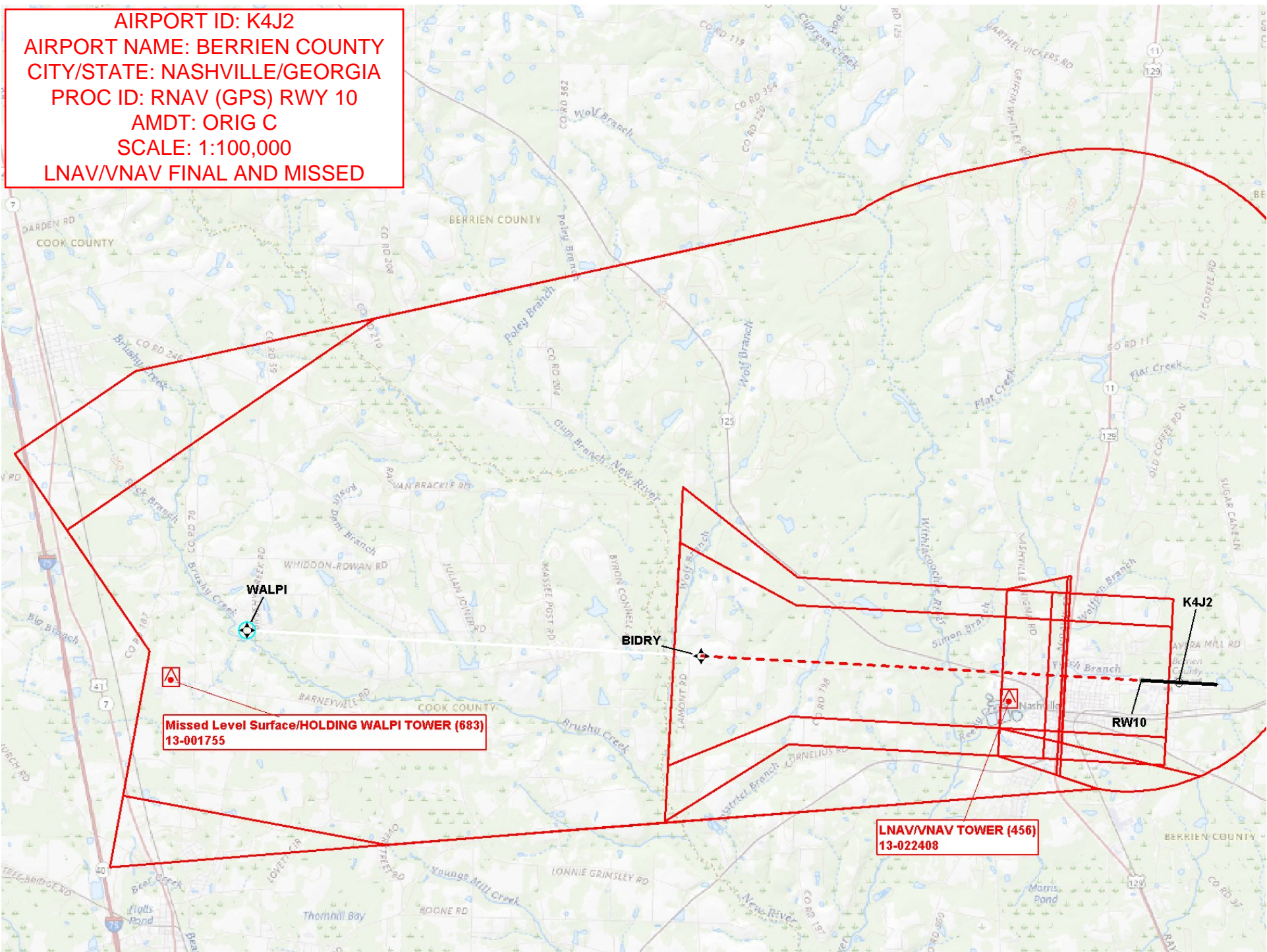
AIRPORT ID: K4J2
AIRPORT NAME: BERRIEN COUNTY
CITY/STATE: NASHVILLE/GEORGIA
PROC ID: RNAV (GPS) RWY 10
AMDT: ORIG C
SCALE: 1:100,000
LPV FINAL AND MISSED



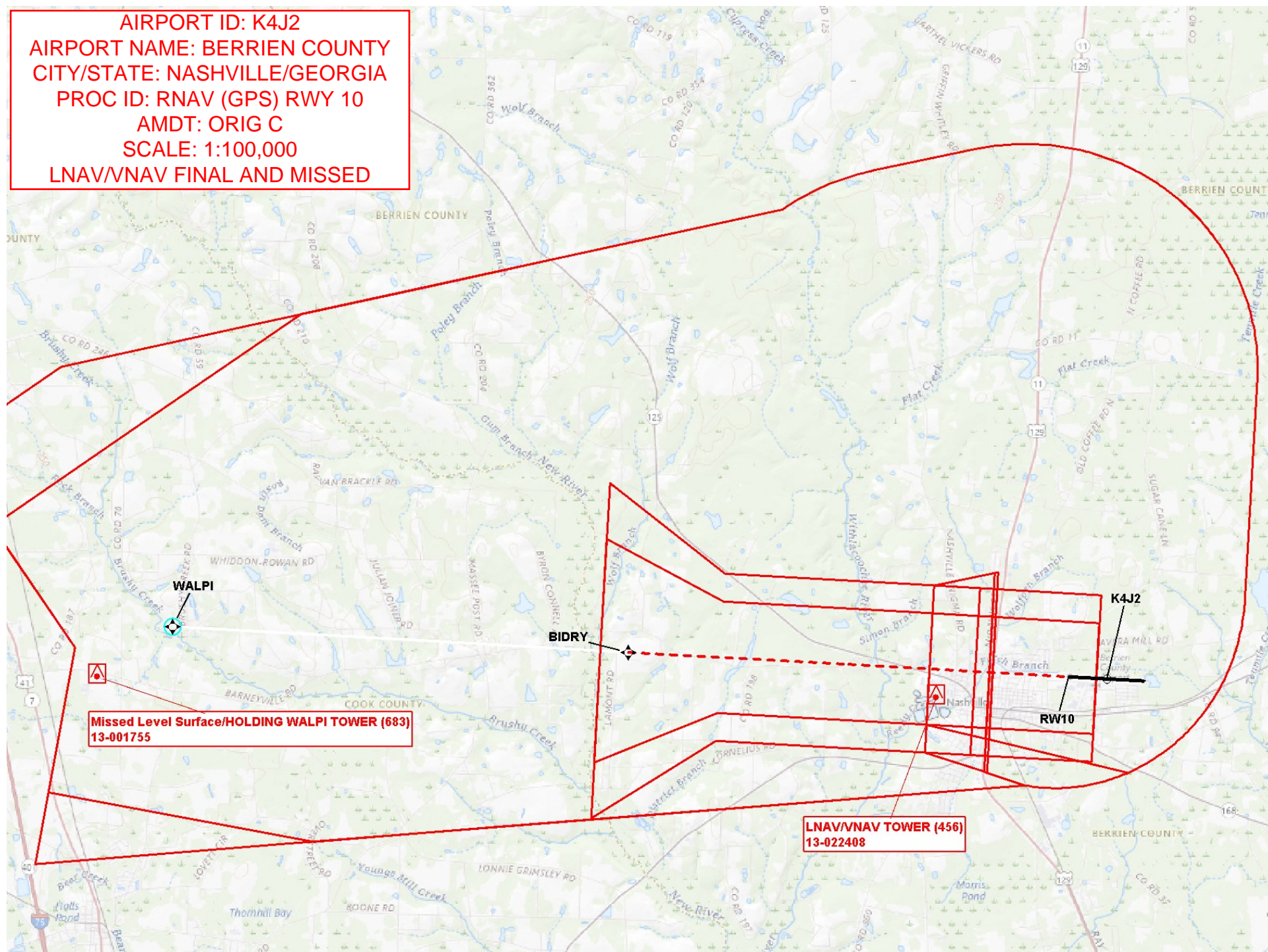
AIRPORT ID: K4J2
AIRPORT NAME: BERRIEN COUNTY
CITY/STATE: NASHVILLE/GEORGIA
PROC ID: RNAV (GPS) RWY 10
AMDT: ORIG C
SCALE: 1:100,000
LPV FINAL AND MISSED



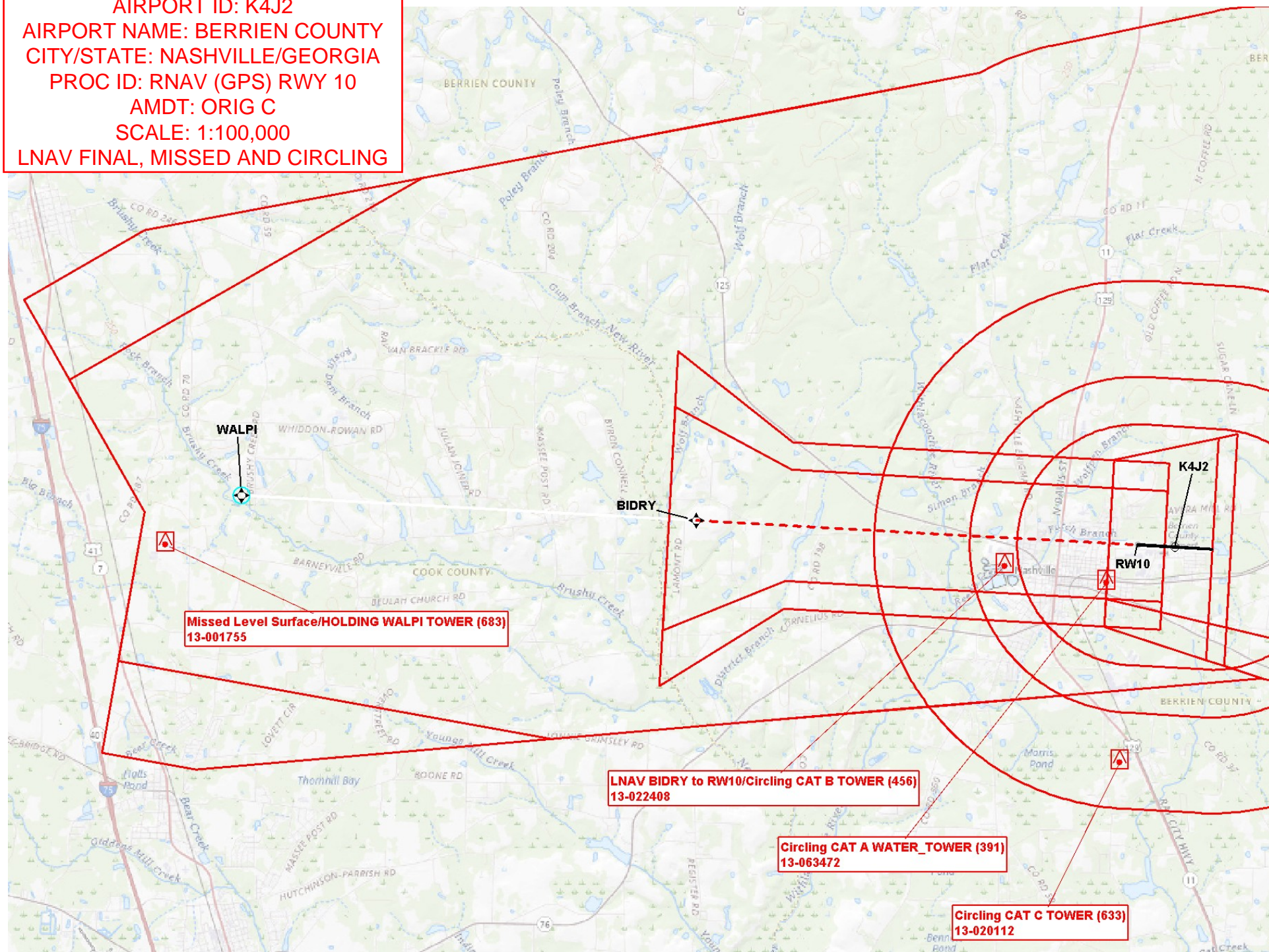
AIRPORT ID: K4J2
AIRPORT NAME: BERRIEN COUNTY
CITY/STATE: NASHVILLE/GEORGIA
PROC ID: RNAV (GPS) RWY 10
AMDT: ORIG C
SCALE: 1:100,000
LNAV/VNAV FINAL AND MISSED



AIRPORT ID: K4J2
AIRPORT NAME: BERRIEN COUNTY
CITY/STATE: NASHVILLE/GEORGIA
PROC ID: RNAV (GPS) RWY 10
AMDT: ORIG C
SCALE: 1:100,000
LNAV/VNAV FINAL AND MISSED



AIRPORT ID: K4J2
AIRPORT NAME: BERRIEN COUNTY
CITY/STATE: NASHVILLE/GEORGIA
PROC ID: RNAV (GPS) RWY 10
AMDT: ORIG C
SCALE: 1:100,000
LNAV FINAL, MISSED AND CIRCLING



AIRPORT ID: K4J2
AIRPORT NAME: BERRIEN COUNTY
CITY/STATE: NASHVILLE/GEORGIA
PROC ID: RNAV (GPS) RWY 10
AMDT: ORIG C
SCALE: 1:100,000
LNAV FINAL, MISSED AND CIRCLING

