

Flight Procedures Cover Page	Task Action: FLIGHT CHECK	Task Type: IAP	Estimated Chart Date: 05/19/2022	APWS Task ID: D38EE869C52F413FA3B298DE8AAC2301	APWS Project ID: 19AF1BA269FF4272963BF5AA8D11070C
Procedure: RNAV (GPS) Y RWY 21 AMDT 2A		Enroute: NO	Specialist: Campbell, Colin		Agreement Number:
Airport ID: KIDA			Airport City: IDAHO FALLS		State: ID
Facility ID:	Facility Type:	Flight Inspection Remark Type: New FC Slot			
<p>Procedure Comments:</p> <p>CLEARs FDC NOTAM 1/4614</p> <p>ACTIVE AIRPORT DATA USED</p> <p>NEW CONTROLLING OBSTACLE FOR LPV FINAL SEGMENT; CHANGED FROM "ASC" TO "4732 TERRAIN (16-056974) 433122.67N/1120353.29W".</p> <p>NEW CONTROLLING OBSTACLE FOR LNAV FINAL STEPDOWN SEGMENT; CHANGED FROM "4806 BUILDING (16-000291) 433103.21N/1120334.63W" TO "4849 TREE (16-056866) 433240.23N/1120236.34W".</p> <p>CRC REMAINDER CHANGED FROM "DB5D959A" TO "941C2685".</p> <p>PROCESSED IAW TECHNICAL SUPPORT GROUP (AJF-17) MEMO DATED 07/07/2021, SUBJECT: GUIDANCE FOR PROCEDURAL CHANGES REQUIRING FLIGHT INSPECTION/VALIDATION.</p> <p>CONTACT: JASON KRETSCHMER, AJV-A421, (405) 954-4019</p> <p style="text-align: center;"><i>Digitally signed by</i> JASON KRETSCHMER Nov 09, 2021</p>					

QUALITY
15
CHECKED

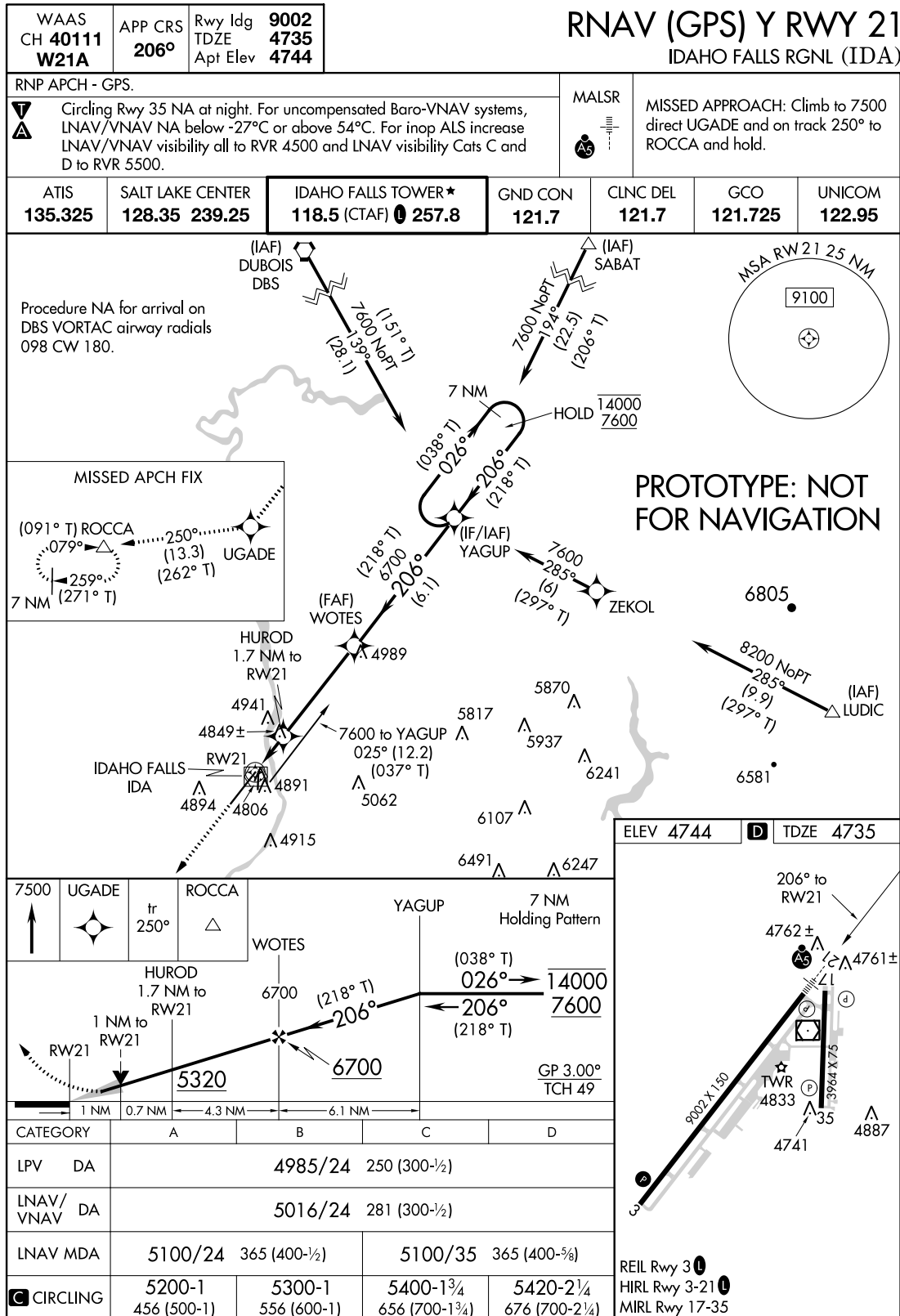
QUALITY
10
CHECKED

FIPC BASIC FORM							
PROCEDURE: RNAV (GPS) Y RWY 21 AMDT 2A			AIRPORT NAME: IDAHO FALLS RGNL		AIRPORT ID: KIDA	SPECIAL CONTROL NO: SG-11-116-21	
FAC ID: KIDA21.02Y		CITY: IDAHO FALLS			ST: ID	ORIG CHART DATE: 03/24/2022	
DFL TYPE: PROC/S	THIRD PARTY: <input type="checkbox"/> YES	EST. TIME ON SITE: 0.4	REIMB. NUMBER:		PTS TASK ID:		
PREFLIGHT NOTES							
REVIEWER: gary j veer					DATE: 12/21/2021		
COMMENTS:					CHECK ONE:		
					<input checked="" type="checkbox"/> FLT CK REQ <input type="checkbox"/> NFCR <input type="checkbox"/> REJECT		
							YES
					CPV COMPLETE?		X
PROCEDURE RESULTS							
INSPECTION DATE: 12/21/2021		CREW #: VN362	N #: N59	INSTRUMENT PROCEDURE STATUS: <input checked="" type="checkbox"/> SAT <input type="checkbox"/> SAT W/CHANGES <input type="checkbox"/> UNSAT		ARINC CODING: <input type="checkbox"/> SAT <input type="checkbox"/> SAT/GOLD <input type="checkbox"/> UNSAT	
FLIGHT INSPECTOR SIGNATURE: gary j veer @ 12/21/2021 18:49			PRINTED NAME: VEER, GARY JOHN			NOTAM INITIATED? <input type="checkbox"/> YES <input checked="" type="checkbox"/> NO	
FLIGHT INSPECTOR REMARKS: Special inspection: New FAS obstacle, new CRC, LPV and LNAV minima raised. IDAHO FALLS RGNL, IDAHO FALLS, ID, RNAV (GPS) Y RWY 21, AMDT 2A, SAT.							
IN-FLIGHT OBSTACLE REPORT							
OBSTRUCTION ID #:	COORDINATES OR LOCATION:		GNSS ALTITUDE (MSL):		BAROMETRIC ALTITUDE (MSL):		HEIGHT ABOVE GROUND LEVEL:

IDAHO FALLS, IDAHO

AL-590 (FAA)

FIG



AUTOMATED AL-590 RNAV (GPS) Y RWY 21

NW-1
5 NOV 2021
COMPILER: CG
REVIEWER:
DBL CHKR:
EFF DATE: FIG

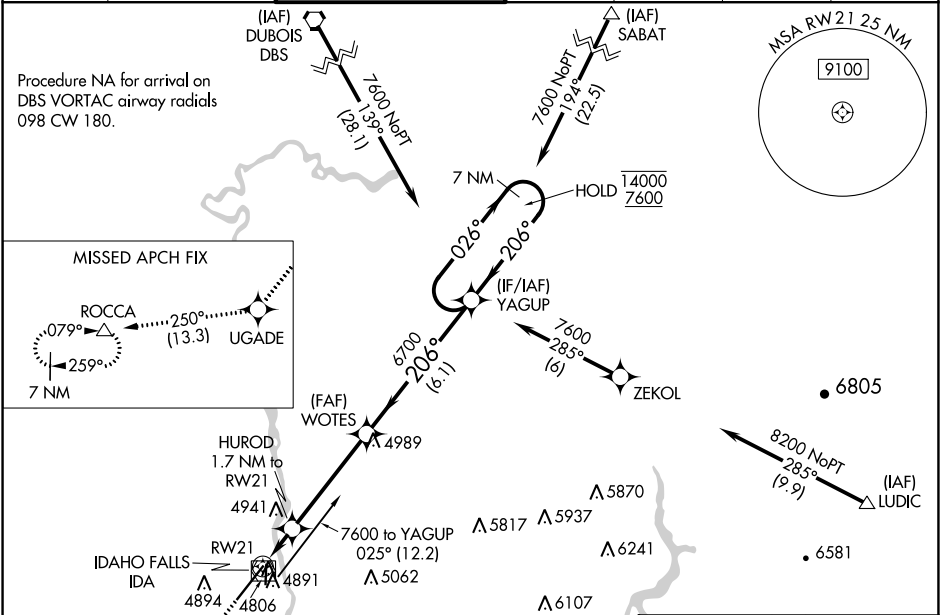
OLD

RNAV (GPS) Y RWY 21
IDAHO FALLS RGNL (IDA)

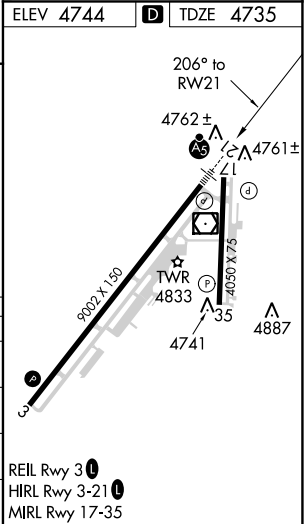
WAAS CH 40111 W21A	APP CRS 206°	Rwy Idg 9002 TDZE 4735 Apt Elev 4744
--	------------------------	---

RNP APCH.	MALSR	MISSED APPROACH: Climb to 7500 direct UGADE and on track 250° to ROCCA and hold.
▼ ▲ For uncompensated Baro-VNAV systems, LNAV/VNAV NA below -27°C or above 49°C . For inop ALS increase LNAV/VNAV visibility all Cats to RVR 4500, LNAV visibility Cts C/D to RVR 5500. # RVR 1800 authorized with the use of FD or AP or HUD to DA.	AS	

ATIS 135.325	SALT LAKE CENTER 128.35 239.25	IDAHO FALLS TOWER* 118.5 (CTAF) 0 257.8	GND CON 121.7	CLNC DEL 121.7	GCO 121.725	UNICOM 122.95
------------------------	--	---	-------------------------	--------------------------	-----------------------	-------------------------



7500 UGADE	ROCCA	WOTES	YAGUP	7 NM Holding Pattern
tr 250°	△			
* LNAV only	HUROD 1.7 NM to RW21	6700	026° 14000 7600	GP 3.00° TCH 49
* 0.9 NM to RW21	5320*	6700	206°	
0.9 NM 0.8 NM 4.3 NM 6.1 NM				
CATEGORY	A	B	C	D
LPV DA#	4935/24	200 (200-½)		
LNAV/VNAV DA	5016/24	281 (300-½)		
LNAV MDA	5060/24	325 (400-½)	5060/40	325 (400-¾)
CIRCLING	5200-1 456 (500-1)	5300-1 556 (600-1)	5400-1¾ 656 (700-1¾)	5420-2¼ 676 (700-2¼)



OLD

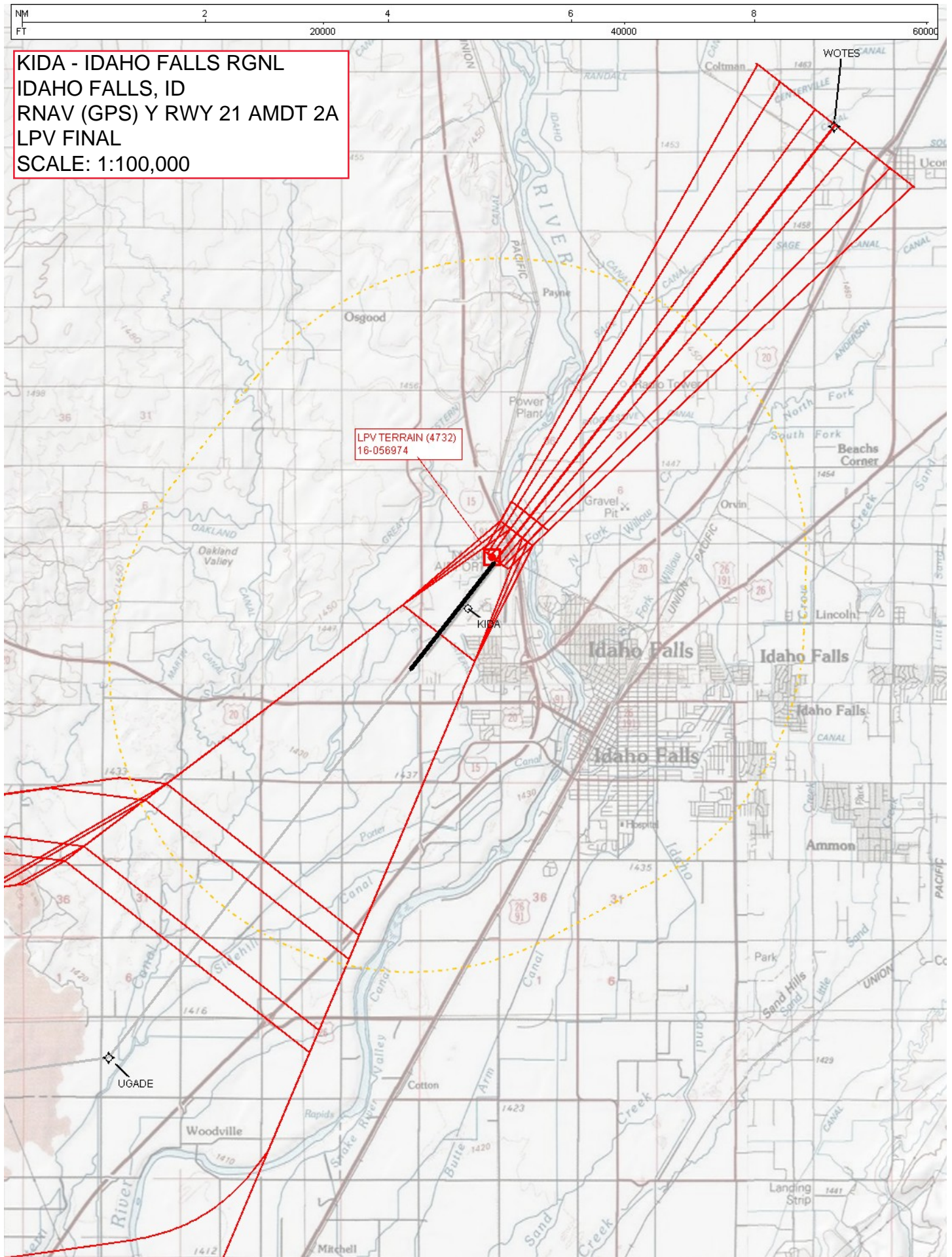
RNAV (GPS) Y RWY 21

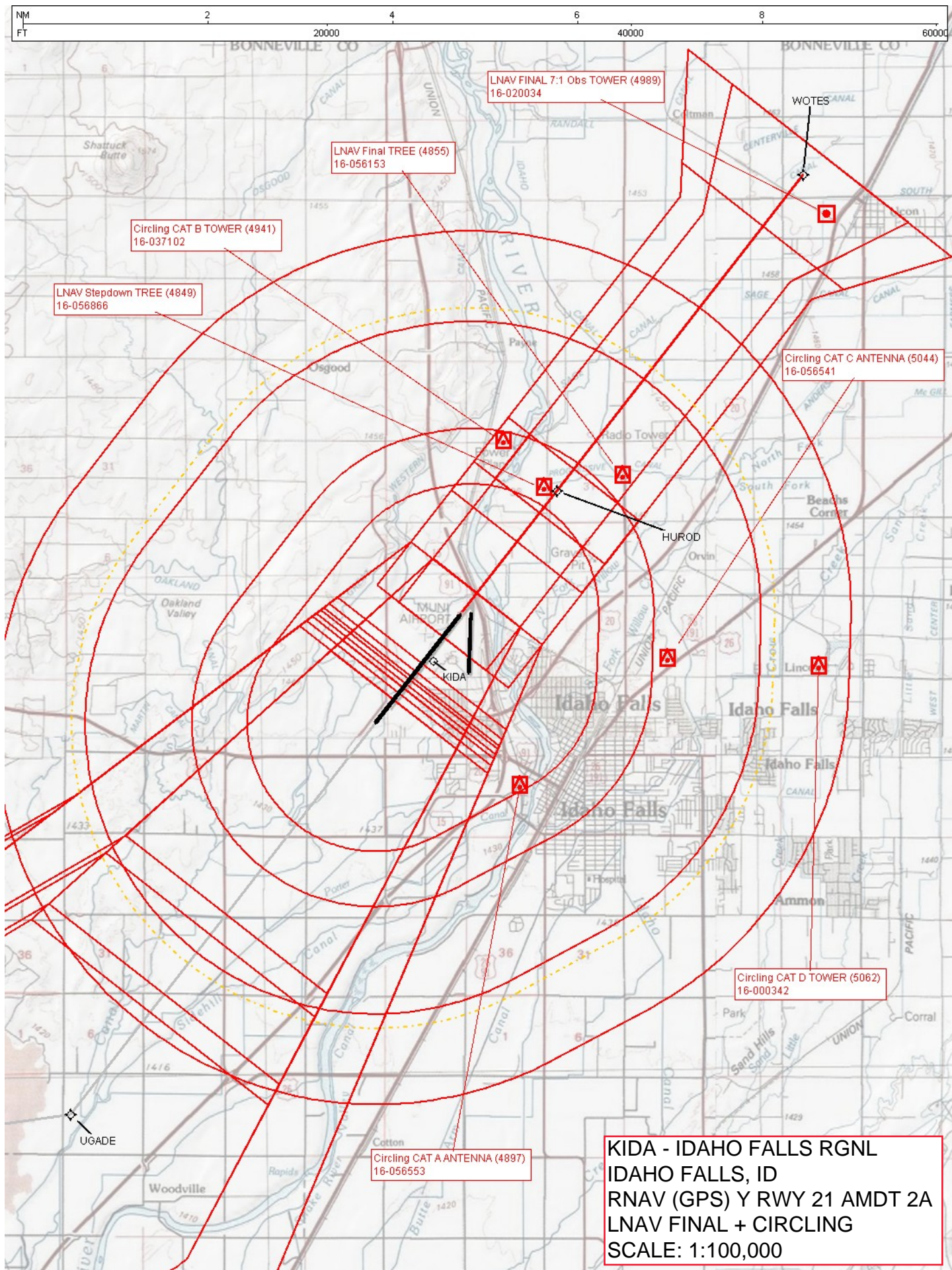
NW-1, 15 JUL 2021 to 12 AUG 2021

NW-1, 15 JUL 2021 to 12 AUG 2021

NM
FT 2 4 6 8 20000 40000 60000

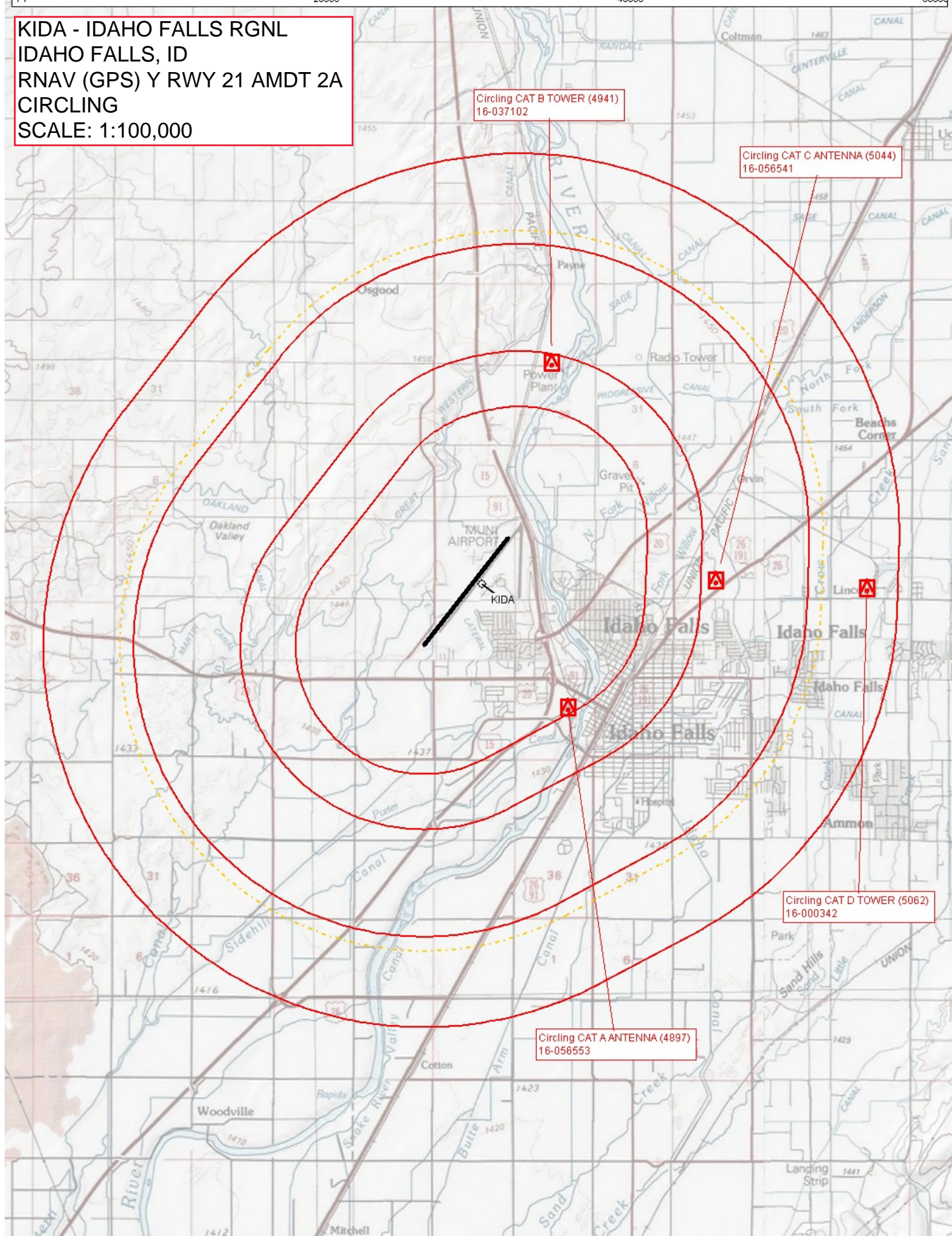
KIDA - IDAHO FALLS RGNL
IDAHO FALLS, ID
RNAV (GPS) Y RWY 21 AMDT 2A
LPV FINAL
SCALE: 1:100,000





NM 2 4 6 8
FT 20000 40000 60000

KIDA - IDAHO FALLS RGNL
IDAHO FALLS, ID
RNAV (GPS) Y RWY 21 AMDT 2A
CIRCLING
SCALE: 1:100,000



Federal Aviation Administration

Categorical Exclusion Declaration

Date: 04/03/2018

IFP: Sutton, Brandon (Brandon.Sutton@faa.gov)

Airport Contact: N/A

Request ID: KIDA_180108_04

Single or Multiple Procedure:

Multiple

Procedure Name(s):

Textual Departure, ILS or LOC RWY 20, LOC BC RWY 02, RNAV (RNP) Z RWY 02, RNAV (RNP) Z RWY 20, RNAV (GPS) Y RWY 02, RNAV (GPS) Y RWY 20, VOR RWY 02, VOR RWY 20.

Procedure Request Description:

Textual Departure - Update obstacle notes. Amend procedure to meet current criteria; no track changes. Remove RWY 17 departure instructions.

ILS or LOC RWY 20 - MAGVAR update/runway 20 becomes runway 21. Remove UCONN NDB. Remove TERRE to UCONN NDB feeder. Update circling to current criteria.

LOC BC RWY 02 - MAGVAR update/runway 02 becomes runway 03. Remove SWEDEN NDB. Remove ROCCA to SWEDEN NDB feeder. Update circling to current criteria.

RNAV (RNP) Z RWY 02 - MAGVAR update/runway 02 becomes runway 03.

RNAV (RNP) Z RWY 20 - MAGVAR update/runway 20 becomes

runway 21.

RNAV (GPS) Y RWY 02 - MAGVAR update/runway 02 becomes runway 03. Update circling to current criteria.

RNAV (GPS) Y RWY 20 - MAGVAR update/runway 20 becomes runway 21. Update circling to current criteria.

VOR RWY 02 - MAGVAR update/runway 02 becomes runway 03. Update circling to current criteria.

VOR RWY 20 - MAGVAR update/runway 20 becomes runway 21. Update circling to current criteria.

Declaration of Exclusion:

The FAA has reviewed the above referenced proposed action and it has been determined, by the undersigned, to be categorically excluded from further environmental documentation according to FAA Order 1050.1, "Environmental Impacts: Policies and Procedures." The implementation of this action will not result in any extraordinary circumstances in accordance with FAA Order 1050.1.

Basis for this Determination:

This review was conducted in accordance with policies and procedures in Department of Transportation Order 5610.1, "Procedures for Considering Environmental Impacts" and FAA Order 1050.1.

The applicable Categorical Exclusion is:

- 5-** Publication of existing air traffic control procedures that do
6.5.k: not essentially change existing tracks, create new tracks, change altitude, or change concentration of aircraft on these tracks. (ATO, AVS)

The above flight procedure has been developed within the accepted parameters.

Concurrence/Reviewed By:

for Marina Landis

Date:

Title:

Approved By:

Date:

Title: