



Flight Procedures Cover Page	Task Action: FLIGHT CHECK	Task Type: IAP	Estimated Chart Date: 07/11/2024	APWS Task ID: D2F4162BF0A545D1909A3960DCEBF339	APWS Project ID: 681BD66DE7D549FBB6B6FB30C784DB64
Procedure: RNAV (GPS) RWY 27 AMDT 2		Enroute: NO	Specialist: Swinson, Robert		Agreement Number:
Airport ID: KFKN			Airport City: FRANKLIN		State: VA
Facility ID:	Facility Type:	Flight Inspection Remark Type: New FC Slot			
<div>Procedure Comments:</div> <div>ACTIVE AIRNAV DATA USED FOR KFKN AIRPORT AND RWYS.</div> <div>CANCELS FDC NOTAM 3/0960.</div> <div>CONTACT CASIMIR TABAKA 405-202-7857.</div> <div>8260-2 SUNNS</div> <div>7/30/24: THIS IS A CORRECTED COPY OF THE FORM APPROVED ON 7/11/24</div> <div>ADDED CHART ENROUTE LOW TO REQUIRED CHARTING.</div> <div>J ZEDER 07/30/2024</div> <div>16</div> <div>41</div> <div>8</div>					

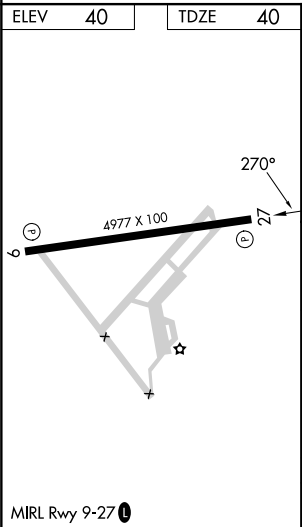
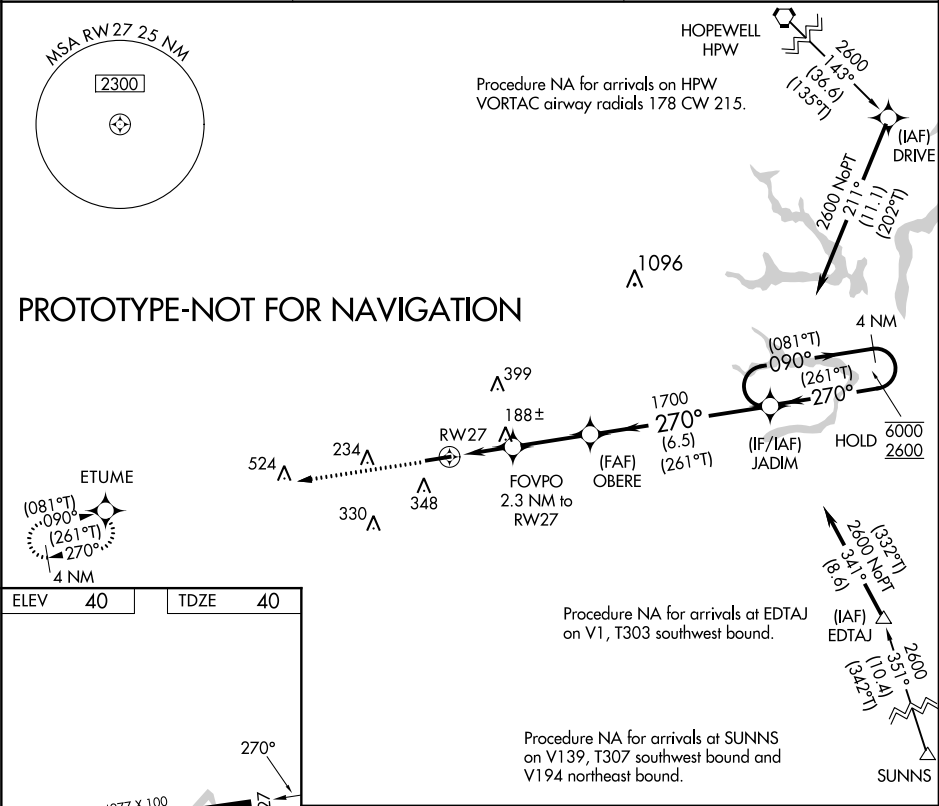
FIPC BASIC FORM						
PROCEDURE: RNAV (GPS) RWY 27 AMDT 2			AIRPORT NAME: FRANKLIN RGNL		AIRPORT ID: KFKN	SPECIAL CONTROL NO: YG-04-082-24
FAC ID: KFKN27.02		CITY: FRANKLIN			ST: VA	ORIG CHART DATE: 07/11/2024
DFL TYPE: PROC/G	THIRD PARTY: <input type="checkbox"/> YES	EST. TIME ON SITE: 0.5	REIMB. NUMBER: AC0721	PTS TASK ID: D2F4162BF0A545D1909A3960DCEBF339		
PREFLIGHT NOTES						
REVIEWER:					DATE:	
COMMENTS:					CHECK ONE:	
					<input type="checkbox"/> FLT CK REQ <input type="checkbox"/> NFCR <input type="checkbox"/> REJECT	
						YES
					CPV COMPLETE?	X
PROCEDURE RESULTS						
INSPECTION DATE: 05/16/2024	CREW #: VN327	N #: N70	INSTRUMENT PROCEDURE STATUS: <input checked="" type="checkbox"/> SAT <input type="checkbox"/> SAT W/CHANGES <input type="checkbox"/> UNSAT		ARINC CODING: <input checked="" type="checkbox"/> SAT <input type="checkbox"/> SAT/GOLD <input type="checkbox"/> UNSAT	
FLIGHT INSPECTOR SIGNATURE: jeffrey eckman @ 05/16/2024 12:18			PRINTED NAME: ECKMAN, JEFFREY ALAN			NOTAM INITIATED? <input type="checkbox"/> YES <input checked="" type="checkbox"/> NO
FLIGHT INSPECTOR REMARKS: Procedure is SAT as proposed.						
IN-FLIGHT OBSTACLE REPORT						
OBSTRUCTION ID #:	COORDINATES OR LOCATION:	GNSS ALTITUDE (MSL):	BAROMETRIC ALTITUDE (MSL):	HEIGHT ABOVE GROUND LEVEL:		

WAAS CH 90227 W27A	APP CRS 270°	Rwy Idg TDZE Apt Elev	4977 40 40
--	------------------------	-----------------------------	---------------------------------------

RNAV (GPS) RWY 27
FRANKLIN RGNL (F'KN)

RNP APCH - GPS.		MISSED APPROACH: Climb to 2600 direct ETUME and hold.
 	Rwy 27 helicopter visibility reduction below ¾ SM NA.	

AWOS-3PT 124.675	NORFOLK APP CON 127.9 269.425	UNICOM 122.8 (CTAF) 0
----------------------------	---	---------------------------------



2600	ETUME	FOVPO 2.3 NM to RW27	OBERE	JADIM	4 NM Holding Pattern
		1.1 NM to RW27	3.00° TCH 40	(261°T) 270°	(081°T) 090° 6000 270° 2600 (261°T)
		800	1700		
		1.1 NM	1.2 NM	2.8 NM	6.5 NM
CATEGORY	A	B	C	D	
LNNAV MDA	440-1	400 (400-1)	440-1½	400 (400-1½)	

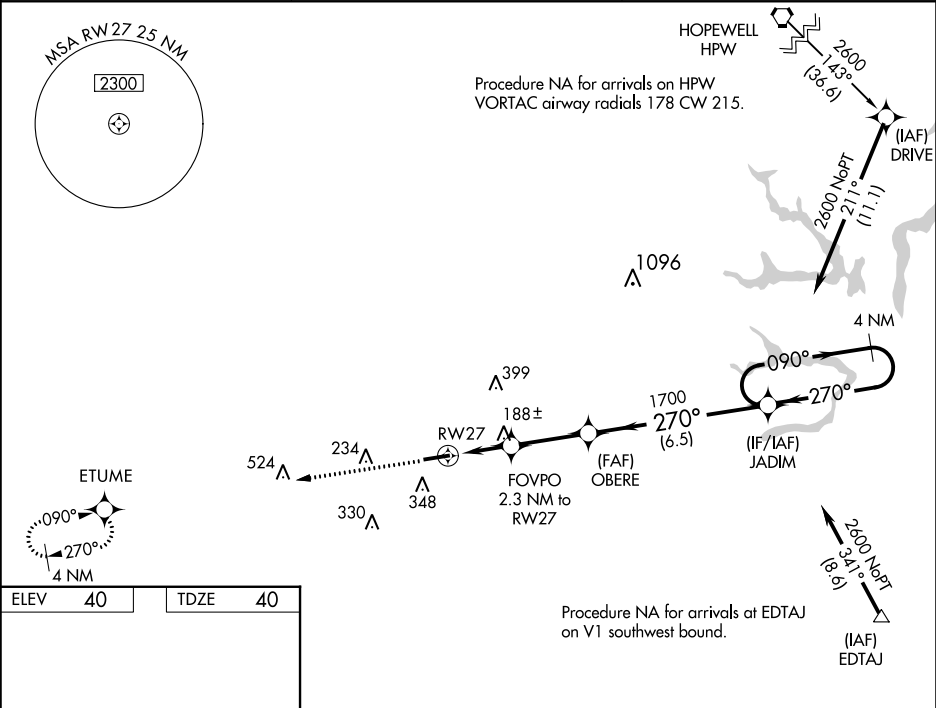
WAAS CH 90227 W27A	APP CRS 270°	Rwy Idg TDZE Apt Elev	4977 40 40
--	------------------------	-----------------------------	---------------------------------------



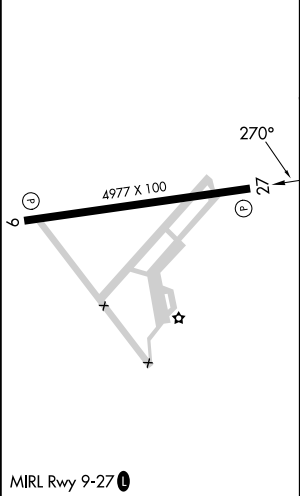
RNAV (GPS) RWY 27
FRANKLIN RGNL (F'KN)

RNP APCH.	For uncompensated Baro-VNAV systems, LNAV/VNAV NA below -15°C or above 54°C. Baro-VNAV and VDP NA when using Suffolk altimeter setting. When local altimeter setting not received, use Suffolk altimeter setting: increase LPV DA to 404 feet and visibility all Cats 1/8 SM; increase LNAV/VNAV DA to 392 feet and visibility all Cats 1/4 SM; increase all MDA 40 feet and LNAV Cats C/D visibility 1/8 SM. Rwy 27 helicopter visibility reduction below 3/4 SM NA.	MISSED APPROACH: Climb to 2600 direct ETUME and hold.
-----------	---	--

AWOS-3PT 124.675	NORFOLK APP CON 127.9 269.425	UNICOM 122.8 (CTAF) 0
----------------------------	---	---------------------------------



ELEV 40	TDZE 40
---------	---------



2600	ETUME	* LNAV only.		4 NM Holding Pattern	
↑	✦	FOVPO 2.3 NM to RW27	OBERE 1700	JADIM	
		* 1.1 NM to RW27		090° →	2600
			* 800	← 270°	
			1700		GP 3.00° TCH 40
		1.1 NM	1.2 NM	2.8 NM	6.5 NM
CATEGORY	A	B	C	D	
LPV DA	366-1⅛ 326 (400-1⅛)				
LNAV/ VNAV DA	354-1 314 (400-1)				
LNAV MDA	440-1	400 (400-1)	440-1⅛	400 (400-1⅛)	

NE-3, 30 NOV 2023 to 28 DEC 2023

NE-3, 30 NOV 2023 to 28 DEC 2023

AIRPORT ID: KFKN
AIRPORT NAME: FRANKLIN RGNL
CITY/STATE: FRANKLIN/VIRGINIA
PROC ID: RNAV (GPS) RWY 27
AMDT: 2
SCALE: 1:100,000
LNAV

