

Flight Procedures Cover Page	Task Action: FLIGHT CHECK	Task Type: IAP	Estimated Chart Date: 01/25/2024	APWS Task ID: D27DB688900A49808A6EB7D9017EB765	APWS Project ID: 361EFA37684B43EF8CD7D5DBE98ACB62
Procedure: RNAV (RNP) Z RWY 23L AMDT 3		Enroute: NO	Specialist: Jackson, Frank		Agreement Number:
Airport ID: KIND			Airport City: INDIANAPOLIS		State: IN
Facility ID:	Facility Type:	Flight Inspection Remark Type: New FC Slot			

Procedure Comments:
ACTIVE DATA USED.

APPROVAL LETTERS (3) FOR INTERMEDIATE MANDATORY ALTITUDES.

THIS CANCELS FDC 3/0313.

CONTACT: ERIC SUSKI, AJV-A431 LEAD, 405.954.7331.

QUALITY
20
CHECKED

QUALITY
9
CHECKED
BEGUE

Digitally signed by
ERIC N SUSKI
Oct 27, 2023



Federal Aviation Administration

Memorandum

Date: May 1, 2023
To: Tom Lattimer, FAA CSA OSG PBN Co-Lead
From: Tony Marchese, IND Air Traffic Manager
Prepared by: Robert Ellis, Senior ATC Specialist, NAVTAC Support
Subject: Letter of Approval Request KIND RNAV (RNP) Z RWY 23L

KIND RNAV RNP Z RWY 23L: KNIGHT Mandatory Altitude.

KIND TRACON requests AFS approval to chart a mandatory altitude restriction at the following fix, KNIGHT at 6000ft MSL for RNAV RNP Z RWY 23L instrument approach procedure for Indianapolis International Airport (KIND).

Currently, FAAO 8260.19I paragraph 8-6-10n (1) requires Flight Standards approval from the Flight Technologies and Procedures Division to chart a mandatory altitude on the intermediate segment of an instrument approach procedure.

Therefore, Indianapolis TRACON requests to chart the mandatory restriction at KNIGHT KIND RNAV RNP Z RWY 23L. This is an ATC operational request to ensure vertical separation between aircraft on the approach and other TRACON traffic.

Sincerely,

ANTHONY R
MARCHESE

Digitally signed by
ANTHONY R MARCHESE
Date: 2023.05.01 14:53:14
-04'00'



Federal Aviation Administration

Memorandum

Date: May 1, 2023
To: Tom Lattimer, FAA CSA OSG PBN Co-Lead
From: Tony Marchese, IND Air Traffic Manager
Prepared by: Robert Ellis, Senior ATC Specialist, NAVTAC Support
Subject: Letter of Approval Request KIND RNAV (RNP) Z RWY 23L

KIND RNAV RNP Z RWY 23L: MIILR Mandatory Altitude.

KIND TRACON requests AFS approval to chart a mandatory altitude restriction at the following fix, MIILR at 5000ft MSL for RNAV RNP Z RWY 23L instrument approach procedure for Indianapolis International Airport (KIND).

Currently, FAAO 8260.19I paragraph 8-6-10n (1) requires Flight Standards approval from the Flight Technologies and Procedures Division to chart a mandatory altitude on the intermediate segment of an instrument approach procedure.

Therefore, Indianapolis TRACON requests to chart the mandatory restriction at MIILR KIND RNAV RNP Z RWY 23L. This is an ATC operational request to ensure vertical separation between aircraft on the approach and other TRACON traffic.

Sincerely,

ANTHONY R
MARCHESE

Digitally signed by
ANTHONY R MARCHESE
Date: 2023.05.01 14:54:18
-04'00'



Federal Aviation Administration

Memorandum

Date: May 1, 2023
To: Tom Lattimer, FAA CSA OSG PBN Co-Lead
From: Tony Marchese, IND Air Traffic Manager
Prepared by: Robert Ellis, Senior ATC Specialist, NAVTAC Support
Subject: Letter of Approval Request KIND RNAV (RNP) Z RWY 23L

KIND RNAV RNP Z RWY 23L: TRAAK Mandatory Altitude.

KIND TRACON requests AFS approval to chart a mandatory altitude restriction at the following fix, TRAAK at 6000ft MSL for RNAV RNP Z RWY 23L instrument approach procedure for Indianapolis International Airport (KIND).

Currently, FAAO 8260.19I paragraph 8-6-10n (1) requires Flight Standards approval from the Flight Technologies and Procedures Division to chart a mandatory altitude on the intermediate segment of an instrument approach procedure.

Therefore, Indianapolis TRACON requests to chart the mandatory restriction at TRAAK KIND RNAV RNP Z RWY 23L. This is an ATC operational request to ensure vertical separation between aircraft on the approach and other TRACON traffic.

Sincerely,

ANTHONY R
MARCHESE

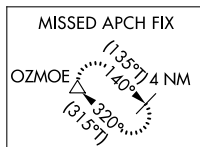
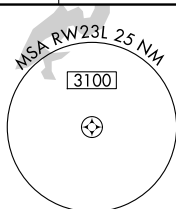
Digitally signed by
ANTHONY R. MARCHESE
Date: 2023.05.01 14:51:47
-04'00'

RNAV (RNP) Z RWY 23L
INDIANAPOLIS INTL (IND)

MALSR

MISSED APPROACH: Climb to 1500, then climbing left turn to 3000 direct OZMOE and hold.

CPDLC

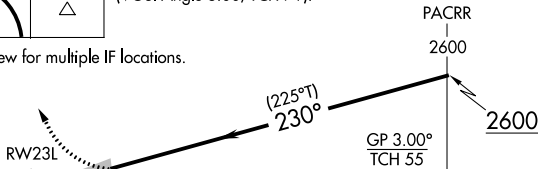


1500	3000
------	------

OZMOE
△

VGSI and RNAV glidepath not coincident (VGSI Angle 3.00/TCH 71).

See planview for multiple IF locations.



	5.5 NM			
CATEGORY	A	B	C	D
RNP 0.30 DA		1175/35	385 (400- ⁵ / ₆)	

AUTHORIZATION REQUIRED

ELEV 796	D	TDZE 790
----------	----------	----------

HIRL all Rwy's
TDZ/CL Rwy's 5L and 5R

RNAV (RNP) Z RWY 23L

INDIANAPOLIS, INDIANA

AL-203 (FAA)

23222

APP CRS	Rwy Idg	10000
230°	TDZE	790
	Apt Elev	796

OLD

RNAV (RNP) Z RWY 23L

INDIANAPOLIS INTL (IND)

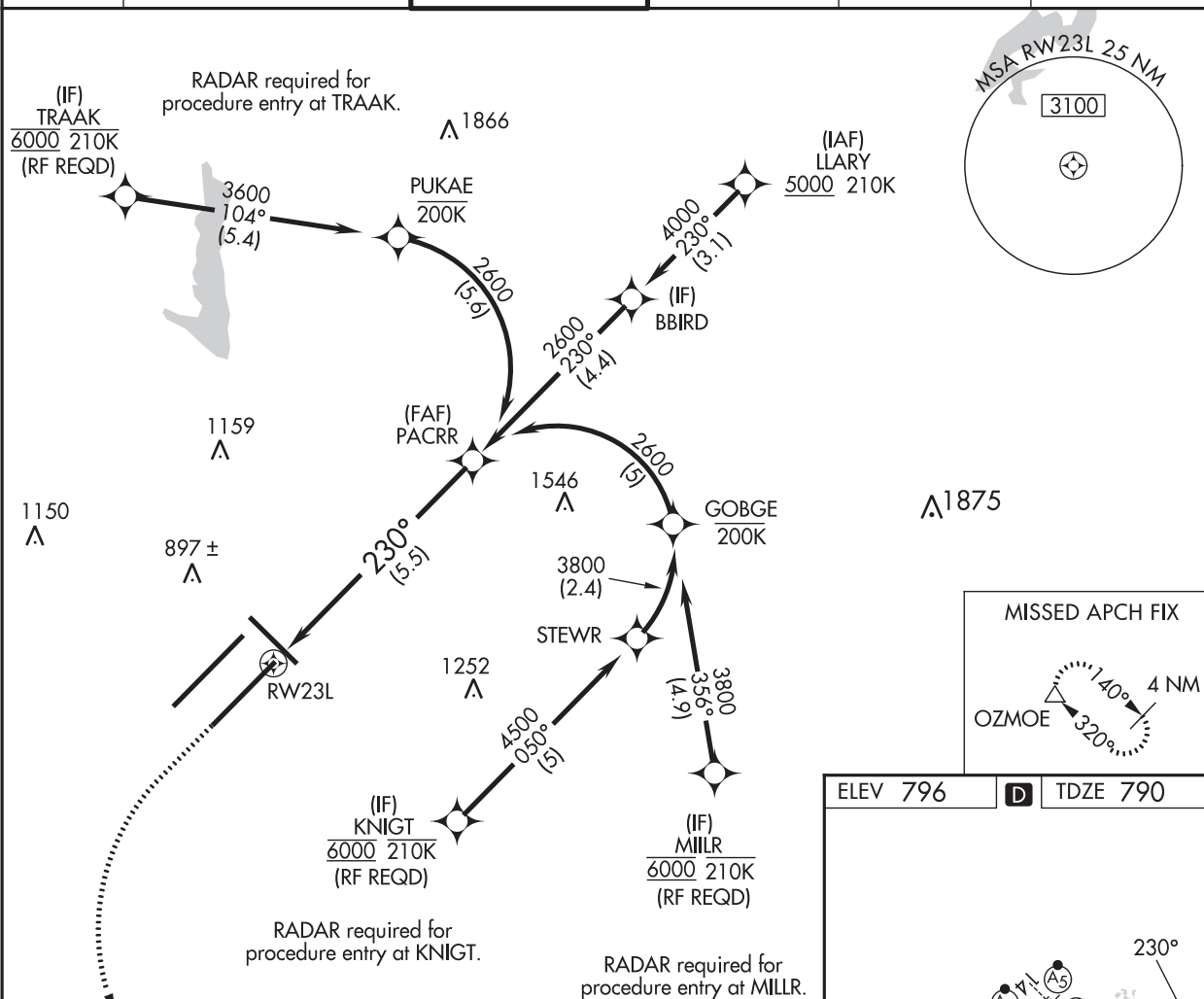
RNP AR APCH.

T For uncompensated Baro-VNAV systems, procedure NA below -18°C or above 54°C. Simultaneous approach authorized for arrivals from LLARY only. GPS required.



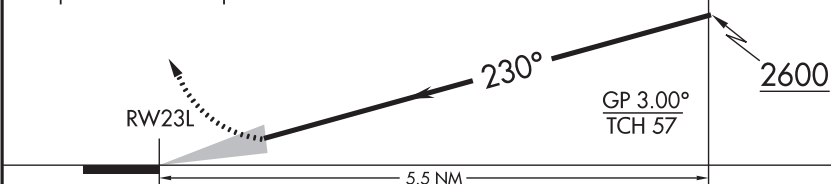
MISSED APPROACH: Climb to 1500, then climbing left turn to 3000 direct OZMOE and hold.

D-ATIS 134.25	INDIANAPOLIS APP CON 128.175 317.8	INDY TOWER 120.9 257.8	GND CON 121.9	CLNC DEL 128.75 257.8	CPDLC
-------------------------	--	----------------------------------	-------------------------	---------------------------------	-------

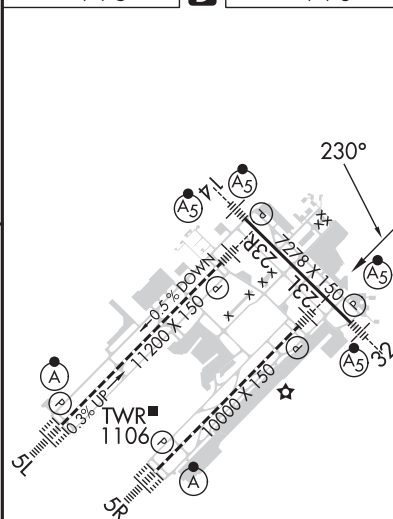


1500	3000	OZMOE	VGSI and RNAV glidepath not coincident (VGSI Angle 3.00/TCH 71).
------	------	-------	--

See planview for multiple IF locations.



CATEGORY	A	B	C	D
RNP 0.30 DA	1163/40	373 (400-¾)		

AUTHORIZATION REQUIREDELEV 796 **D** TDZE 790

HIRL all Rwys
TDZ/CL Rwys 5L and 5R

EC-2, 10 AUG 2023 to 07 SEP 2023

EC-2, 10 AUG 2023 to 07 SEP 2023

INDIANAPOLIS, INDIANA

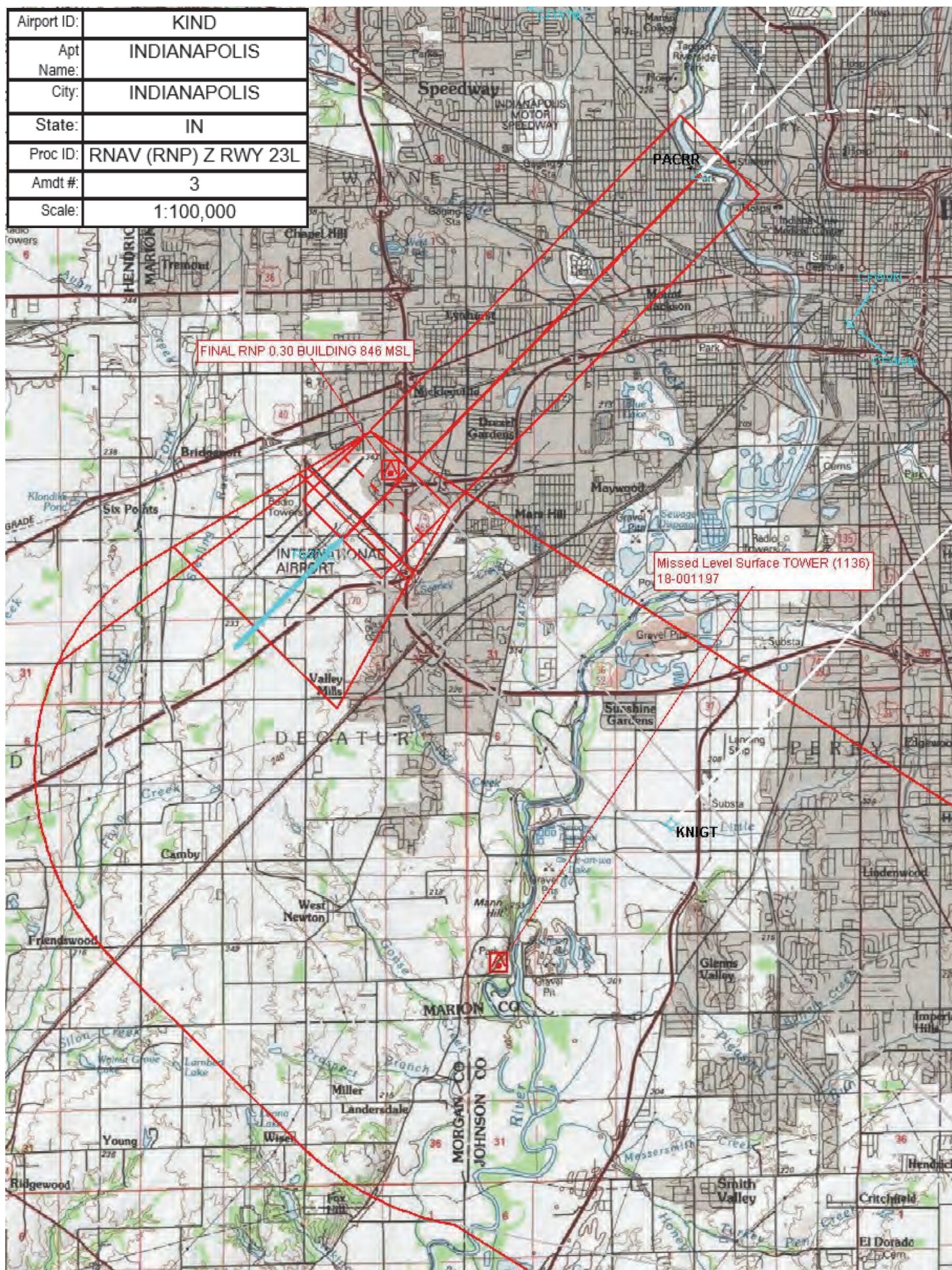
Amdt 2A 26MAR20

39°43'N-86°18'W

INDIANAPOLIS INTL (IND)

RNAV (RNP) Z RWY 23L

Airport ID:	KIND
Apt Name:	INDIANAPOLIS
City:	INDIANAPOLIS
State:	IN
Proc ID:	RNAV (RNP) Z RWY 23L
Amdt #:	3
Scale:	1:100,000



Airport ID:	KIND
Apt Name:	INDIANAPOLIS
City:	INDIANAPOLIS
State:	IN
Proc ID:	RNAV (RNP) Z RWY 23L
Amdt #:	3
Scale:	1:500,000

