

Flight Procedures Cover Page	Task Action: P-NOTAM	Task Type: IAP	Estimated Chart Date: 08/12/2021	APWS Task ID: D1586FF4ACD148A2A88A6D7ABD3B370D	APWS Project ID: 679C03BE9C5D4680A37C3C2D0E56A5C7
Procedure: ILS OR LOC RWY 36C AMDT 41D		Enroute: NO	Specialist: Miller, Ralph		Agreement Number:
Airport ID: KCVG			Airport City: COVINGTON		State: KY
Facility ID: CVG	Facility Type: ILS	Flight Inspection Remark Type:			
<p>Procedure Comments:</p> <p>P-NOTAM.</p> <p>CIRCLING RADII INCREASE BASED ON EXISTING PROCEDURE AT AIRPORT – ILS OR LOC RWY 18C A23, CHART DATE 7/19/18.</p> <p>PROCESSED IAW AIRCRAFT OPERATIONS GROUP (AJF-10) MEMO, APRIL 29, 2020 SUBJECT: FLIGHT INSPECTION NOT REQUIRED.</p> <p>ACTIVE DATA USED.</p> <p>CONTACT JASON KRETSCHMER, AJV-A421, 405-954-5077.</p> <p style="text-align: center;"><i>Digitally signed by</i> JASON KRETSCHMER Jun 10, 2021</p>					

QUALITY
33
CHECKED

QUALITY
41
CHECKED

OLD

COVINGTON, KENTUCKY

AL-655 (FAA)

20310

LOC/DME	I-CVG	APP CRS	Rwy Idg
109.9		006°	11000
Chan 36			TDZE 851
			Apt Elev 896

ILS or LOC RWY 36C

CINCINNATI/NORTHERN KENTUCKY INTL (CVG)

Simultaneous approach authorized with Rwy 36L/R.
DME required.

ALSF-2

MISSED APPROACH: Climb to 1500 then climbing left turn to 3000 via CVG R-010 to NEATS/CVG 18 DME and hold.

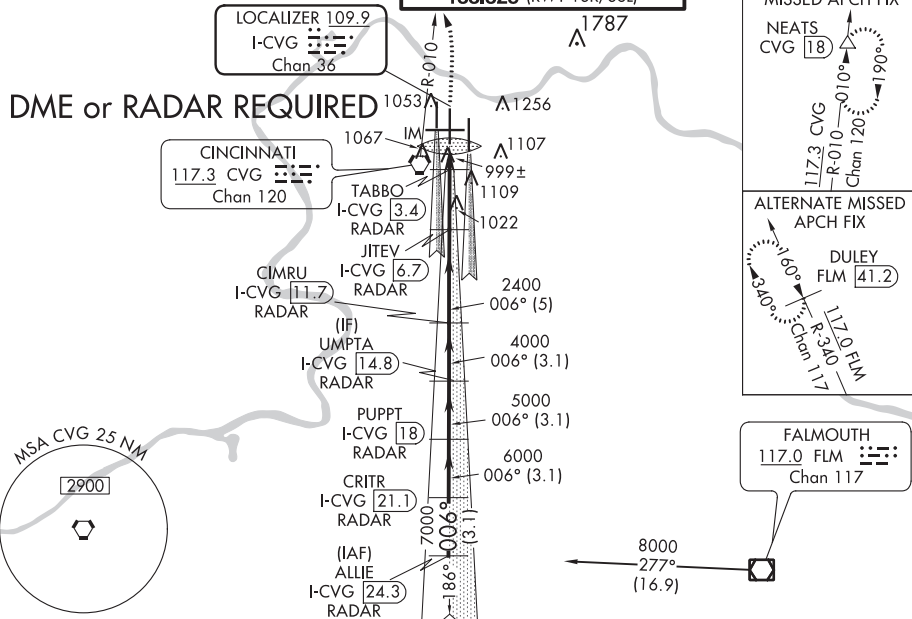
D-ATIS
ARR 134.375
DEP 135.3

CINCINNATI APP CON
119.7 363.15 (090°-269°)
123.875 363.15 (270°-089°)

CINCINNATI TOWER
118.975 360.85 (RWY 18L/36R)
118.3 (RWYS 18C/36C, 09/27)
133.325 (RWY 18R/36L)

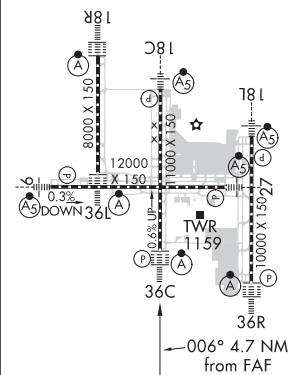
GND CON
121.7

CLNC DEL
127.175

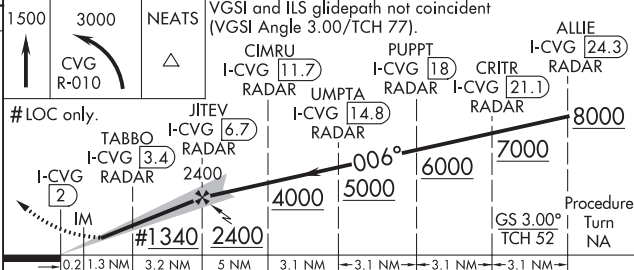


ELEV 896 TDZE 851

TDZ/CL all Rwy's except 27
HIRL all Rwy's



FAF to MAP 4.7 NM					
Knots	60	90	120	150	180
Min:Sec	4:42	3:08	2:21	1:53	1:34



CATEGORY	A	B	C	D
S-ILS 36C	1051/18	200 (200-1/2)		
S-LOC 36C	1340/24	489 (500-1/2)	1340/50	489 (500-1)
CIRCLING	1460-1	564 (600-1)	1460-1 1/2 564 (600-1 1/2)	1560-2 664 (700-2)
TABBO FIX MINIMUMS				
S-LOC 36C	1260/24	409 (400-1/2)	1260/40	409 (400-3/4)
CIRCLING	1460-1	564 (600-1)	1460-1 1/2 564 (600-1 1/2)	1560-2 664 (700-2)

COVINGTON, KENTUCKY
Amdt 41C 04APR13

CINCINNATI/NORTHERN KENTUCKY INTL (CVG)
39°03'N-84°40'W

ILS or LOC RWY 36C

SE-1, 31 DEC 2020 to 28 JAN 2021

SE-1, 31 DEC 2020 to 28 JAN 2021

