

Flight Procedures Cover Page	Task Action: P-NOTAM	Task Type: IAP	Estimated Chart Date: 12/02/2021	APWS Task ID: D07A1C765F314A078D228E9E64642CA0	APWS Project ID: F55843C37594445A8B064F7CB10C6102
Procedure: RNAV (GPS) RWY 36 AMDT 1B		Enroute: NO	Specialist: Sickels, Dale		Agreement Number:
Airport ID: KFPY			Airport City: PERRY		State: FL
Facility ID:	Facility Type:	Flight Inspection Remark Type:			
<p>Procedure Comments: Order 8260.3, Chapter 2, New Circling Criteria Applied.</p> <p>Contact Jason Kretschmer, AJV-A421, 405-954-4019</p> <p style="text-align: center;"><i>Digitally signed by</i> JASON KRETSCHMER Oct 15, 2021</p>					

QUALITY
47
CHECKED

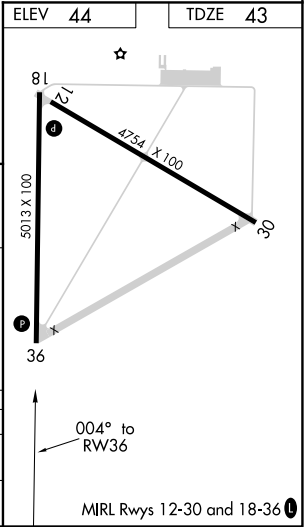
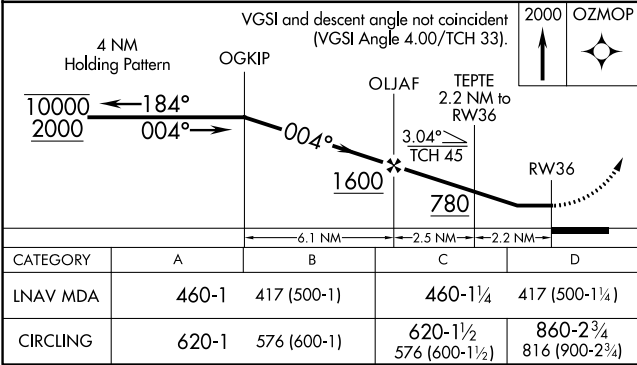
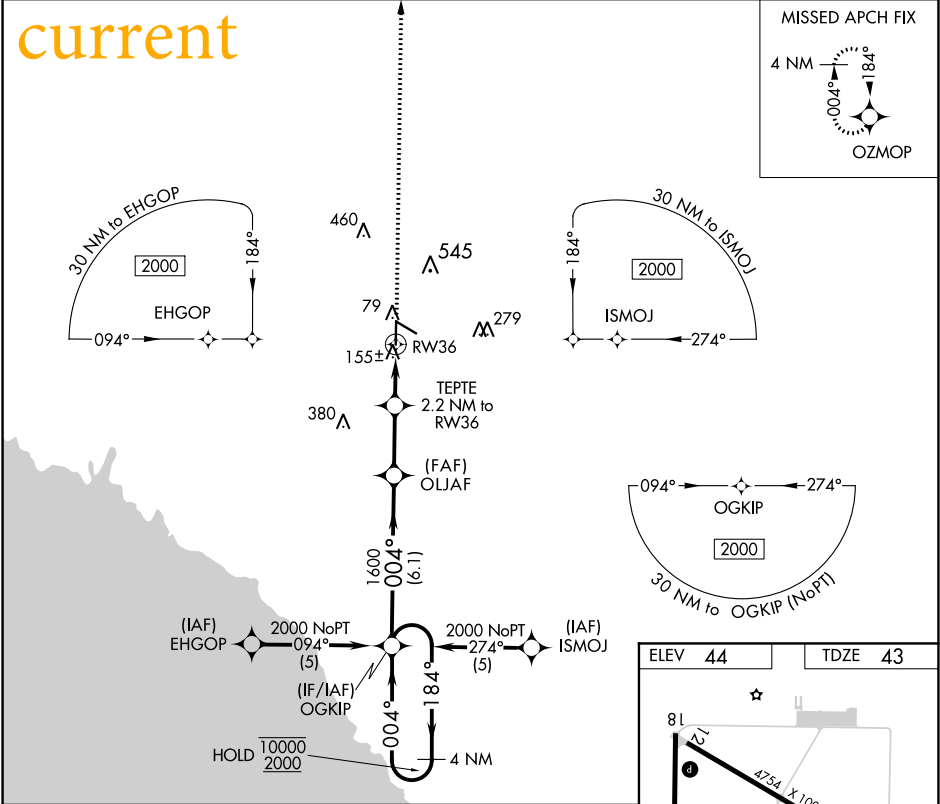
QUALITY
38
CHECKED

APP CRS	Rwy Idg	5013
004°	TDZE	43
	Apt Elev	44

RNAV (GPS) RWY 36
PERRY-FOLEY (F'PY)

RNP APCH.	MISSED APPROACH: Climb to 2000 direct OZMOP and hold.
<div><div>▼</div><div>▲</div></div> <div>Circling Rwy 12 NA at night. Procedure NA at night. Rwy 36 helicopter visibility reduction below 1 SM NA.</div>	

AWOS-3PT 118.375	JACKSONVILLE CENTER 127.8 352.0	UNICOM 122.8 (CTAF) 0
---------------------	------------------------------------	--------------------------

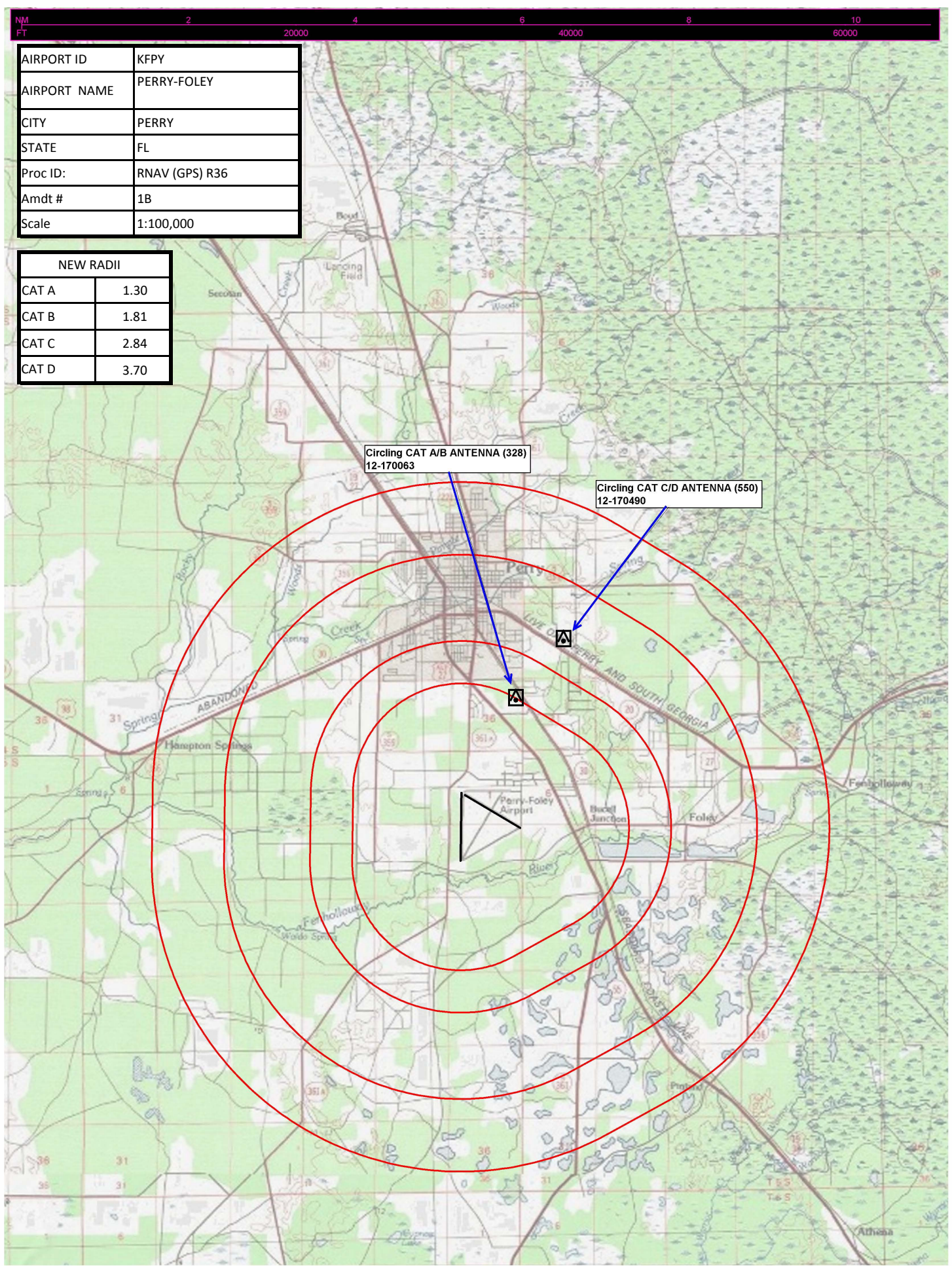


SE-3, 09 SEP 2021 to 07 OCT 2021

SE-3, 09 SEP 2021 to 07 OCT 2021

AIRPORT ID	KFPY
AIRPORT NAME	PERRY-FOLEY
CITY	PERRY
STATE	FL
Proc ID:	RNAV (GPS) R36
Amdt #	1B
Scale	1:100,000

NEW RADII	
CAT A	1.30
CAT B	1.81
CAT C	2.84
CAT D	3.70



Circling CAT A/B ANTENNA (328)
12-170063

Circling CAT C/D ANTENNA (550)
12-170490