

Flight Procedures Cover Page	Task Action: FLIGHT CHECK	Task Type: IAP	Estimated Chart Date: 08/11/2022	APWS Task ID: D07638A5AF724B07982F863C7DABE3ED	APWS Project ID: A5ED6978458A4BF78C7FBDE865BE1708
Procedure: RNAV (GPS) RWY 32 AMDT 0B		Enroute: NO	Specialist: Roslewski, Russell		Agreement Number:
Airport ID: KHPY			Airport City: BAYTOWN		State: TX
Facility ID:	Facility Type:	Flight Inspection Remark Type: New FC Slot			
<p>Procedure Comments: Processed IAW Technical Support Group (AJF-17) Memo dated 07/07/2021, Subject: Guidance for Procedural Changes Requiring Flight Inspection/Validation</p> <p>New controlling obstacle identified in final segment</p> <p>Cancels FDC 1/4807</p> <p>Jason Kretschmer, 405-954-4019</p> <p style="text-align: right;">J ZEDER 04/12/2022</p> <p style="text-align: center;"><i>Digitally signed by</i> JASON KRETSCHMER May 13, 2022</p>					

QUALITY
16
CHECKED

QUALITY
41
CHECKED

BAYTOWN, TEXAS

OLD

21168

APP CRS	Rwy Idg	3283
320°	TDZE	28
	Apt Elev	34

RNAV (GPS) RWY 32

BAYTOWN (HPY)

RNP APCH.

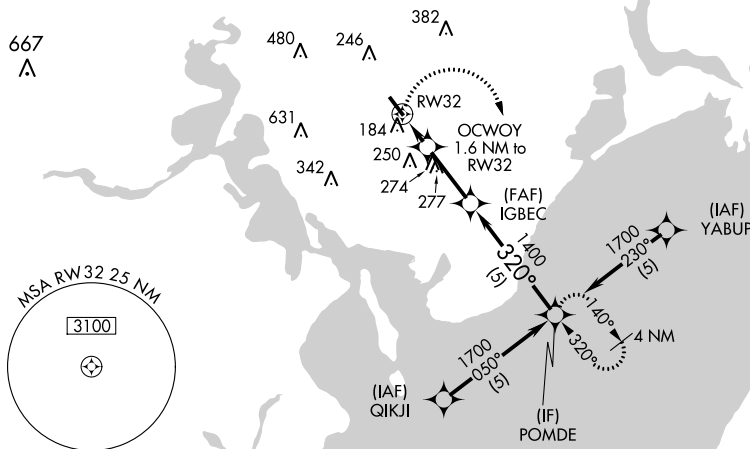
NA Circling NA at night. Rwy14 helicopter visibility reduction below 1 SM NA. Obtain local altimeter setting on CTAF; when not received, use William P Hobby altimeter setting and increase all MDA 60 feet.

MISSED APPROACH:
Climbing right turn to 2000
direct to POMDE and hold.

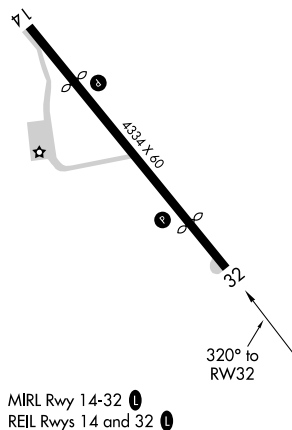
HOUSTON APP CON
134.45 281.4

UNICOM
122.8 (CTAF) 0

RADAR REQUIRED



ELEV 34 **D** TDZE 28



2000	POMDE	VGSi and descent angles not coincident (VGSi Angle 3.00/TCH 20).		POMDE
		IGBEC	1700	
		OCWOY 1.6 NM to RW32	1400	
		RW32	640	
		1.6 NM	2.5 NM	5 NM
CATEGORY	A	B	C	D
LNAV MDA	440-1	412 (500-1)	NA	NA
CIRCLING	500-1 466 (500-1)	560-1 526 (600-1)	NA	NA

BAYTOWN, TEXAS
Orig-A 17JUN21

29°47'N-94°57'W

BAYTOWN (HPY)
RNAV (GPS) RWY 32

SC-5, 24 FEB 2022 to 24 MAR 2022

KHPY
Baytown, TX
RNAV (GPS) RWY 32, Orig-B
1:100k
Final

