

Flight Procedures Cover Page	Task Action: FLIGHT CHECK	Task Type: STAR	Estimated Chart Date: 07/11/2024	APWS Task ID: CFEB6CCAAC04491F9B96219746A3700A	APWS Project ID: 364B70F9F1EE4266A07832735808C20C
Procedure: TYNEE THREE RNAV STAR (Noise)		Enroute: YES	Specialist: Young, Silvia		Agreement Number:
Airport ID: KRSW			Airport City: FORT MYERS		State: FL
Facility ID:	Facility Type:	Flight Inspection Remark Type: New FC Slot			

Procedure Comments:

WAIVER: 1: ATC will issue CROSS (FIX) AT AND MAINTAIN or DESCEND AND MAINTAIN clearances to control the flow of traffic.

CONTACT CASIMIR TABAKA 405.202.7857

05/22/2024: THIS IS AN UPDATED COPY OF THE FORM DEVELOPED ON 01/04/2024.

1. DOWRY TRANSITION: CHANGED CIGAR, SMOGS AND BAGGS MOCAS FROM 1400 TO 1500.

J ZEDER 05/22/2024

QUALITY
16
CHECKED

09/25/2024: THIS IS A CORRECTED COPY OF THE FORM APPROVED ON 03/21/2024.

SMOGS TRANSITION: BAGGS MOCA CHANGED FROM 1400 TO 1500.

QUALITY
16
CHECKED

Digitally signed by

JOSEPH L ZEDER

Sep 25, 2024

03/15/2024

QUALITY
14
CHECKED

FIPC BASIC FORM								
PROCEDURE: TYNEE THREE RNAV STAR (Noise)			AIRPORT NAME: SOUTHWEST FLORIDA INTL		AIRPORT ID: KRSW	SPECIAL CONTROL NO: AG-03-241-24		
FAC ID: TYNEE3		CITY: FORT MYERS			ST: FL	ORIG CHART DATE: 07/11/2024		
DFL TYPE: PROC/D	THIRD PARTY: <input type="checkbox"/> YES	EST. TIME ON SITE: 1.0	REIMB. NUMBER:		PTS TASK ID: CFEB6CCAAC04491F9B96219746A3700A			
PREFLIGHT NOTES								
REVIEWER: eric l geyer					DATE: 05/28/2024			
COMMENTS: Arrival has new segment from over the water. Altitudes on new segment are 18k and align with already established Q route.					CHECK ONE: <input type="checkbox"/> FLT CK REQ <input checked="" type="checkbox"/> NFCR <input type="checkbox"/> REJECT			
							YES	NO
					CPV COMPLETE?		X	
PROCEDURE RESULTS								
INSPECTION DATE: 05/28/2024		CREW #: VN526	N #:	INSTRUMENT PROCEDURE STATUS: <input checked="" type="checkbox"/> SAT <input type="checkbox"/> SAT W/CHANGES <input type="checkbox"/> UNSAT		ARINC CODING: <input type="checkbox"/> SAT <input type="checkbox"/> SAT/GOLD <input type="checkbox"/> UNSAT		
FLIGHT INSPECTOR SIGNATURE: eric l geyer @ 05/28/2024 08:53			PRINTED NAME: GEYER, ERIC LEE			NOTAM INITIATED?		
						<input type="checkbox"/> YES <input checked="" type="checkbox"/> NO		
FLIGHT INSPECTOR REMARKS:								
IN-FLIGHT OBSTACLE REPORT								
OBSTRUCTION ID #:	COORDINATES OR LOCATION:	GNSS ALTITUDE (MSL):		BAROMETRIC ALTITUDE (MSL):		HEIGHT ABOVE GROUND LEVEL:		



Federal Aviation Administration

Memorandum

Date:

To: Instrument Flight Procedures Service Providers

From: Eric S. Parker, Acting Manager, Flight Technologies and Procedures
Division

Subject: Waiver to FAA Order 8260.3, United States Standard for Terminal
Instrument Procedures (TERPS), STAR Termination Altitude

This memorandum waives the requirement of FAA Order 8260.3 paragraph 2-2-7.f(2) for Flight Standards approval when, due to an operational need, an altitude is not established at the termination fix on a STAR that does not join an approach.

Establishing an altitude at the termination fix on STAR that does not join an approach is beneficial for arrival descent planning purposes and is highly encouraged where practical. We recommend consulting Flight Standards, Flight Procedures and Airspace Group early in the design phase to assist in understanding how an altitude at a termination fix benefits operators.

No additional waiver request action is required. Please direct all inquiries to the Flight Procedures and Airspace Group, Standards Section (405) 954-1139 or 9-AWA-AVS-AFS420@faa.gov.

1. FLIGHT PROCEDURE IDENTIFICATION:

Fort Myers, FL
Southwest Florida International Airport (KRSW)
TYNEE (RNAV) STAR

2. WAIVER REQUIRED AND APPLICABLE STANDARD:

Per 8260.3F, Para. 2-2-7e. Common route and runway transitions. Establish a mandatory, minimum or block altitude restriction at a fix that represents the lowest altitude authorized by the STAR or STAR runway transition.

3. REASON FOR WAIVER (JUSTIFICATION FOR NONSTANDARD TREATMENT):

The TYNEE STAR serves multiple airports and runway configurations within KRSW airspace and utilizes varying altitude restrictions to all airports based on dynamic traffic situations. Additionally, the procedure authorizes differing aircraft types, thus introducing different performance characteristics from one aircraft to another. The TYNEE STAR is not a descend via procedure and ATC will issue CROSS (FIX) AT AND MAINTAIN or DESCEND AND MAINTAIN clearances to control the flow of traffic.

Coding the procedure with an altitude on the common route that serves multiple airports with mixed aircraft types and differing performance characteristics will cause confusion and additional workload when the issued altitude is different from the coded restriction on the procedure. Coding two different altitudes on one procedure based on aircraft type is not allowed per design criteria.

4. EQUIVALENT LEVEL OF SAFETY PROVIDED:

With RADAR required and ATC issuing a "CROSS (FIX) AT AND MAINTAIN" or "DESCEND AND MAINTAIN" clearance for all aircraft ensures the requirements are met. These altitudes provide obstacle clearance, communication, and navigable facility requirements for aircraft to utilize the procedure. When radio communications are in use, ATC will provide appropriate altitudes as specified in the ZMA/RSW Letter of Agreement and local SOP for separation, including obstacle clearance.

5. ALTERNATIVE ACTIONS DEEMED NOT FEASIBLE:

Consideration was given to designing the procedure with coded altitudes and deemed not feasible. Procedures with coded altitudes for different aircraft types or performance is not allowed within design criteria. Establishing coded altitudes on the STAR common route restricts ATC ability to dynamically assign altitudes based upon the traffic scenarios, differing aircraft performance characteristics, and airports of intended landing and creates pilot confusion and questions resulting in a significant workload increase for ATC and pilots.

6. COORDINATION WITH USER ORGANIZATIONS (SPECIFY):

ZMA VOR MON Full Work Group
ESC OSG PBN Co-Leads
Miami ARTCC (ZMA)
Fort Myers Approach Control (KRSW)
American Airlines, Southwest Airlines

7. SUBMITTED BY:

DATE	OFFICE IDENTIFICATION	TITLE
09/13/23	AJV-24E	ESC OSG PBN Co-Lead, Management

SIGNATURE

Reginald E Davis
Digitally signed by
Reginald E Davis
Date: 2023.09.13
14:38:23 -04'00'

8. AFS ACTIONS:

☐ APPROVED ☐ DISAPPROVED ☐ NOT REQUIRED

COMMENTS:

DATE	ROUTING SYMBOL	SIGNATURE
------	----------------	-----------

(TYNEE.TYNEE2) 21168

TYNEE TWO ARRIVAL (RNAV)

FORT MYERS, FLORIDA

FORT MYERS APP CON ★
134.425 306.2
FMY ATIS
123.725
RSW D-ATIS
124.65

ARRIVAL ROUTE DESCRIPTION

BAGGS TRANSITION (BAGGS.TYNEE2)
CODGR TRANSITION (CODGR.TYNEE2)
FRZBE TRANSITION (FRZBE.TYNEE2)
PLYER TRANSITION (PLYER.TYNEE2)

From TYNEE on track 149° to PASTR, thence....

....Landing KRSW Rwy 6: from PASTR on track 107° to LENPE, then on heading 107° or as assigned by ATC. Expect RADAR vectors to final approach course.

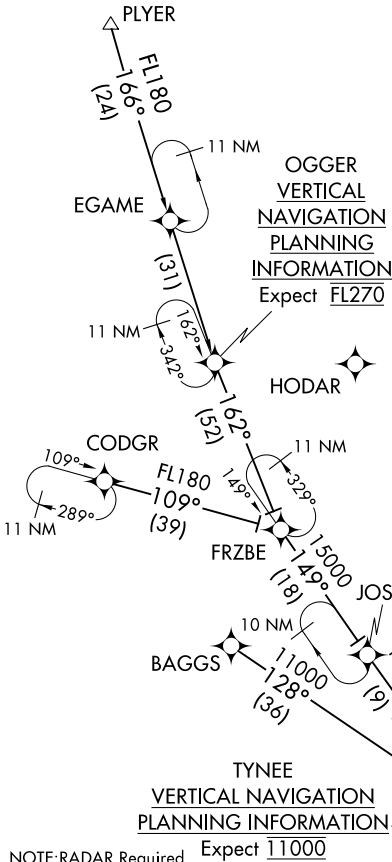
....Landing KRSW Rwy 24: from PASTR on track 129° to LLMER, then on track 086° to SPNKE, then on track 058° to COOPR, then on heading 058° or as assigned by ATC. Expect RADAR vectors to final approach course.

....Landing KFMY: from TYNEE on heading 149° or as assigned by ATC. Expect RADAR vectors to final approach course.

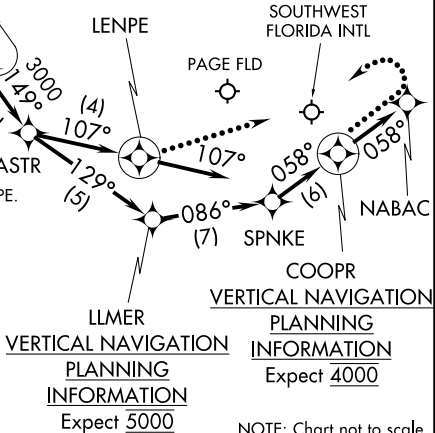
LOST COMMUNICATIONS:

KRSW landing Rwy 6: track to LENPE, intercept approach.

KRSW landing Rwy 24: track to COOPR, then proceed direct to NABAC, turn left to intercept Rwy 24 approach.



NOTE:RADAR Required. Expect 11000
NOTE:RNAV 1.
NOTE:DME/DME/IRU or GPS Required.
NOTE:Turbopjet and Turboprop aircraft only.
NOTE:KRSW landing Rwy 6: expect to intercept approach at LENPE.
NOTE:FRZBE TRANSITION: ATC assigned only.
NOTE:FRZBE TRANSITION to COOPR: for non-GPS equipped aircraft TRV and CYY must be operational.
NOTE:FRZBE TRANSITION to LENPE: for non-GPS equipped aircraft TRV must be operational.
NOTE:CODGR TRANSITION to COOPR: for non-GPS equipped aircraft PIE, TRV and CYY must be operational.
NOTE:CODGR TRANSITION to LENPE: for non-GPS equipped aircraft PIE and TRV must be operational.
NOTE:BAGGS TRANSITION to COOPR: for non-GPS equipped aircraft CYY and RSW must be operational.



TYNEE TWO ARRIVAL (RNAV)

(TYNEE.TYNEE2) 13SEP18

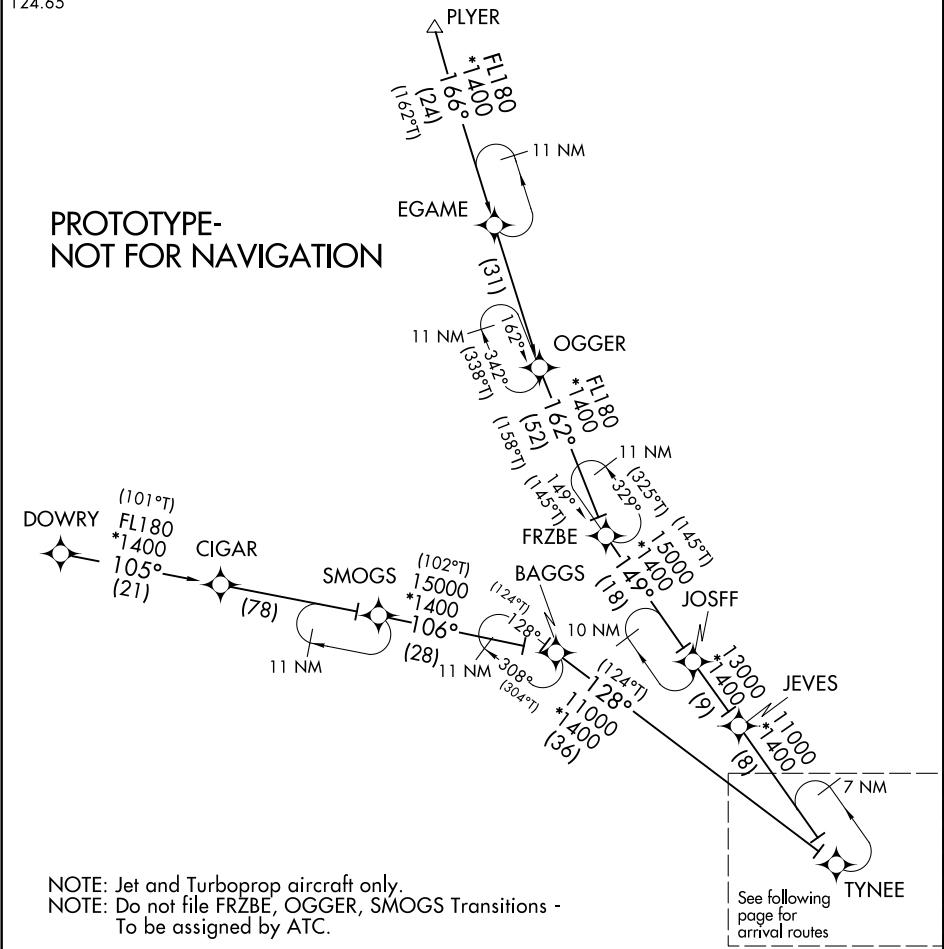
FORT MYERS, FLORIDA

TYNEE THREE ARRIVAL (RNAV) Transition Routes

FORT MYERS, FLORIDA

FORT MYERS APP CON ★
134.425 306.2
FMY ATIS
123.725
RSW D-ATIS
124.65

RNAV 1 - DME/DME/IRU or GPS.
DOWRY Transition - GPS only.
RADAR required.



NOTE: Chart not to scale

- DOWRY TRANSITION (DOWRY.TYNEE3)
- FRZBE TRANSITION (FRZBE.TYNEE3)
- OGGER TRANSITION (OGGER.TYNEE3)
- PLYER TRANSITION (PLYER.TYNEE3)
- SMOGS TRANSITION (SMOGS.TYNEE3)

(CONTINUED ON FOLLOWING PAGE)

TYNEE THREE ARRIVAL (RNAV) Transition Routes

FORT MYERS, FLORIDA

TYNEE THREE ARRIVAL (RNAV) Arrival Routes

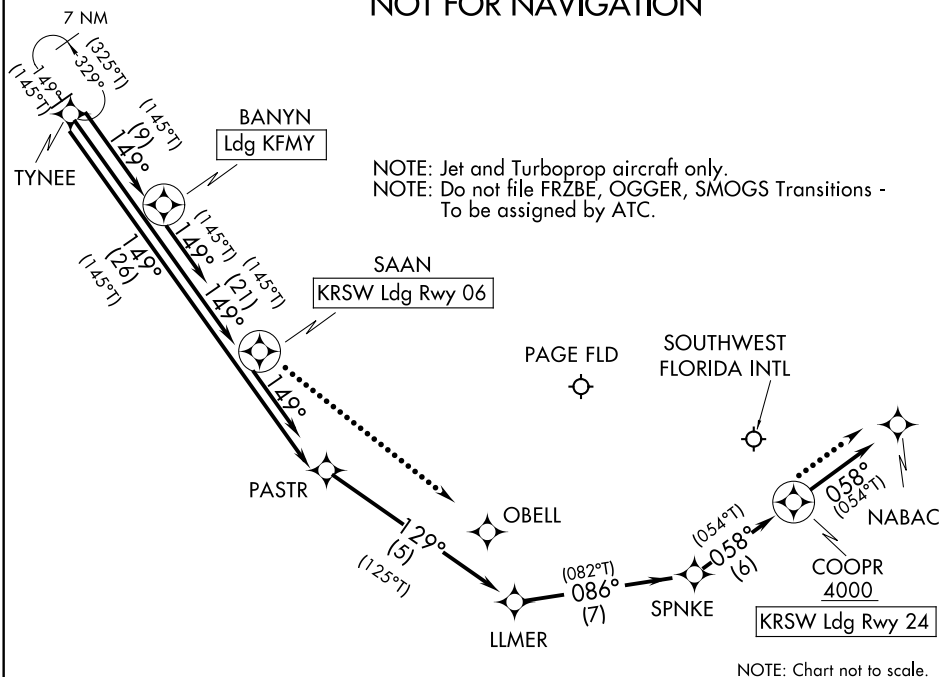
FORT MYERS, FLORIDA

FORT MYERS APP CON ★
134.425 306.2
FMY ATIS
123.725
RSW D-ATIS
124.65

RNAV 1 - DME/DME/IRU or GPS.
DOWRY Transition - GPS only.

RADAR required.

PROTOTYPE-
NOT FOR NAVIGATION



ARRIVAL ROUTE DESCRIPTION

LANDING KRSW RUNWWY 6: From TYNEE on track 149° to SAANN, then on track 149°. Expect RADAR vectors to final approach course.

LANDING KRSW RUNWAY 24: From TYNEE on track 149° to PASTR, then on track 129° to LLMER, then on track 086° to SPNKE, then on track 058° to cross COOPR at or above 4000, then on track 058°. Expect RADAR vectors to final approach course.

LANDING KFMV: From TYNEE on track 149° to BANYN, then on track 149°. Expect RADAR vectors to final approach course.

LOST COMMUNICATIONS:

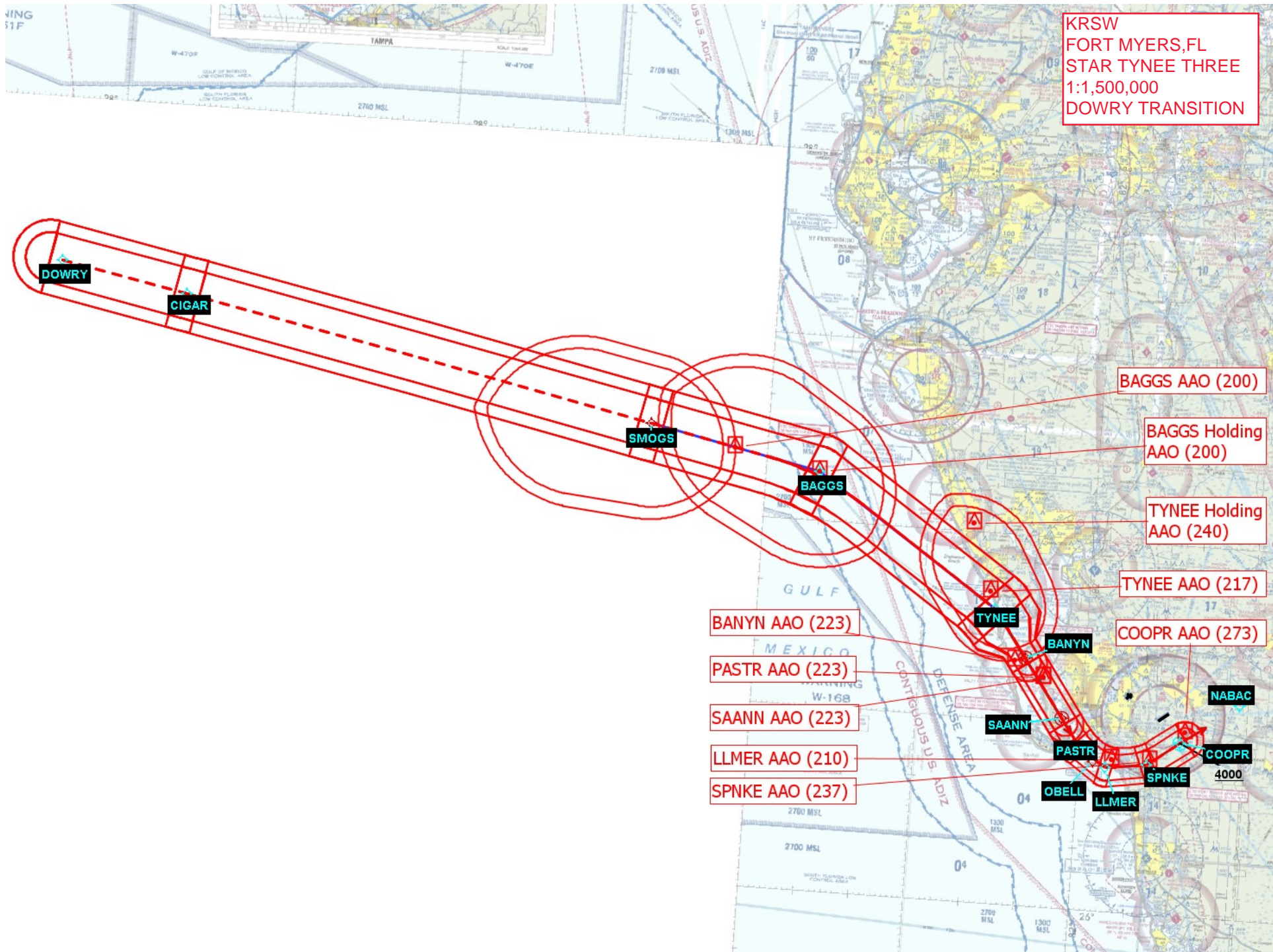
KRSW LANDING RWY 6: After SAANN, continue to OBELL, then conduct RWY 6 approach.

KRSW LANDING RWY 24: After COOPR, continue to NABAC, then conduct RWY 24 approach.

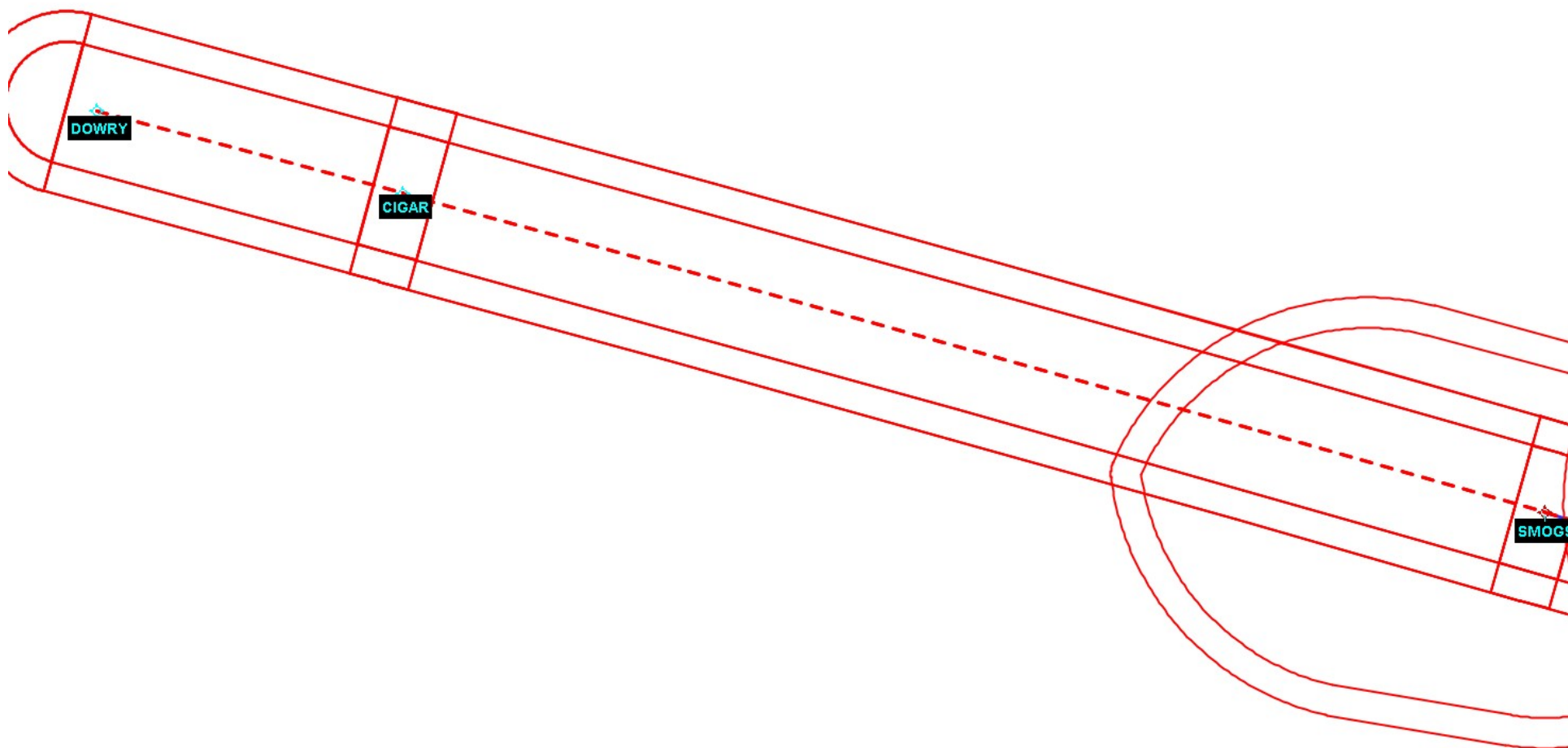
TYNFF THREE ARRIVAL (RNAV) Arrival Routes

FORT MYERS, FLORIDA

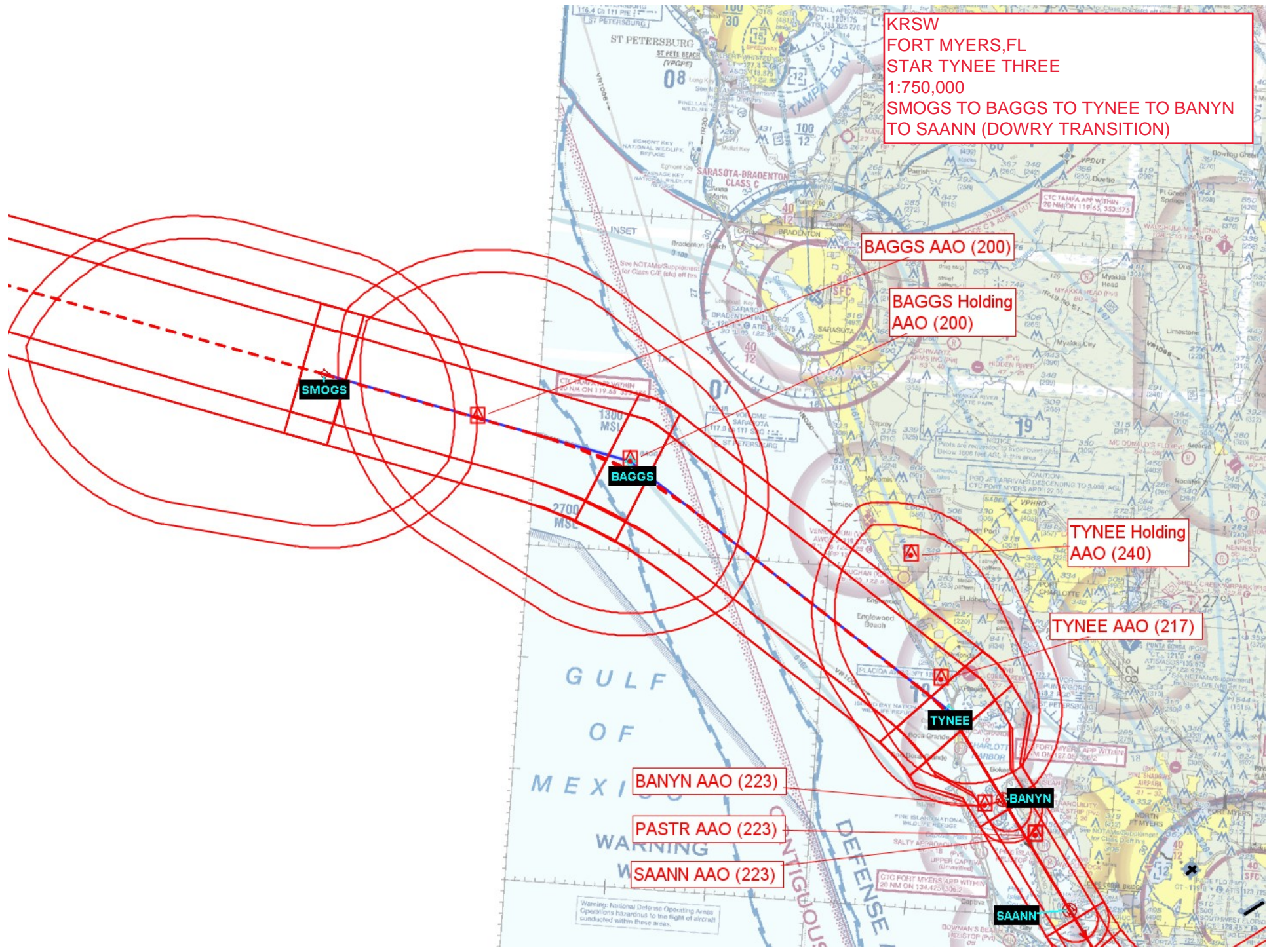
(TYNEE.TYNEE3) FIG



KRSW
FORT MYERS, FL
STAR TYNEE THREE
1:750,000
DOWRY TO CIGAR TO SMOGS
(DOWRY TRANSITION)



KRSW
FORT MYERS, FL
STAR TYNEE THREE
1:750,000
SMOGS TO BAGGS TO TYNEE TO BANYN
TO SAANN (DOWRY TRANSITION)



KRSW

FORT MYERS, FL

STAR TYNEE THREE

1:500,000

TYNEE TO BANYN TO SAANN TO PASTR TO
OBELL TO LLMER TO SPNKE TO COOPR
(DOWRY TRANSITION)

TYNEE Holding
AAO (240)

TYNEE AAO (217)

COOPR AAO (273)

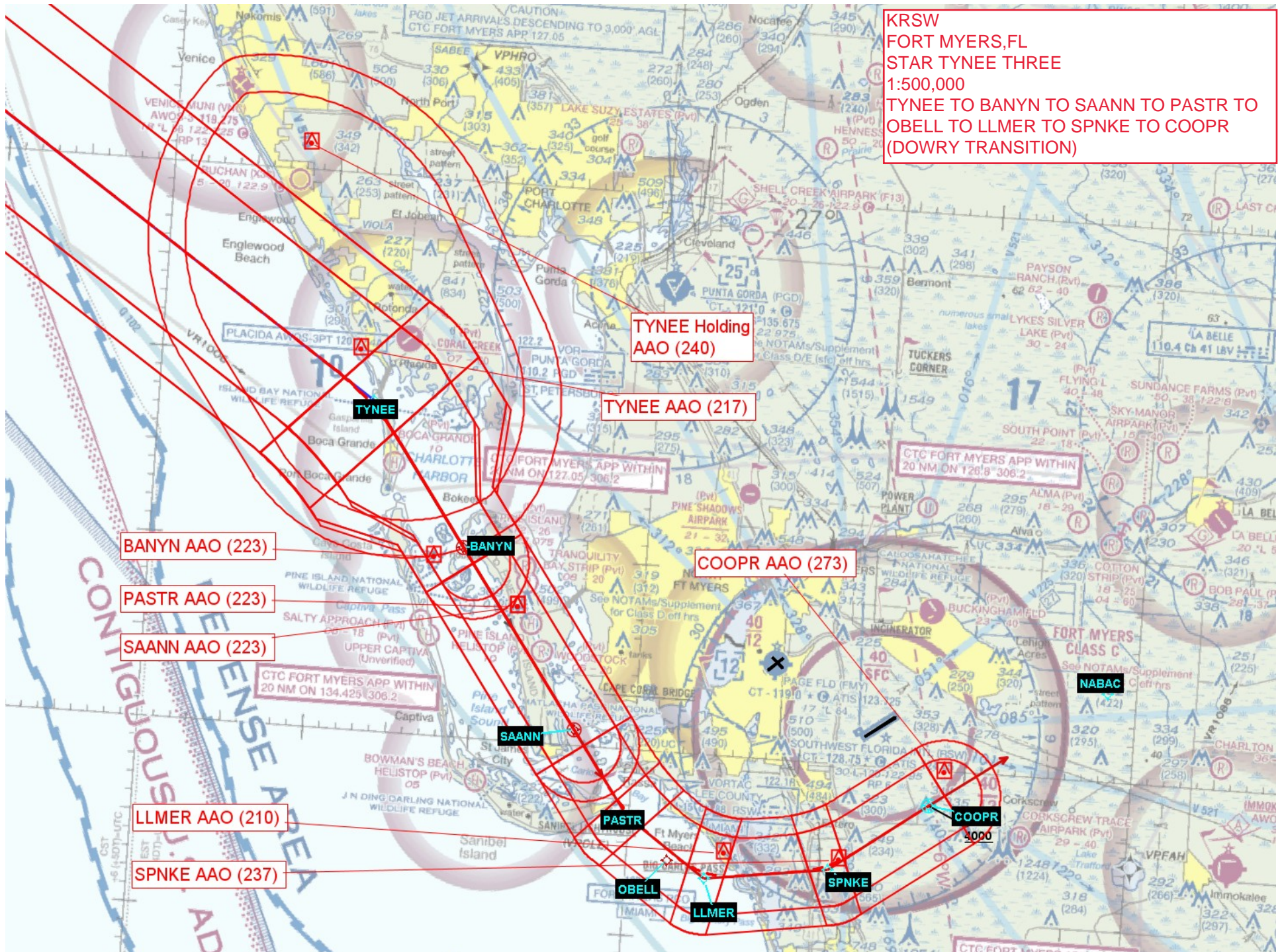
BANYN AAO (223)

PASTR AAO (223)

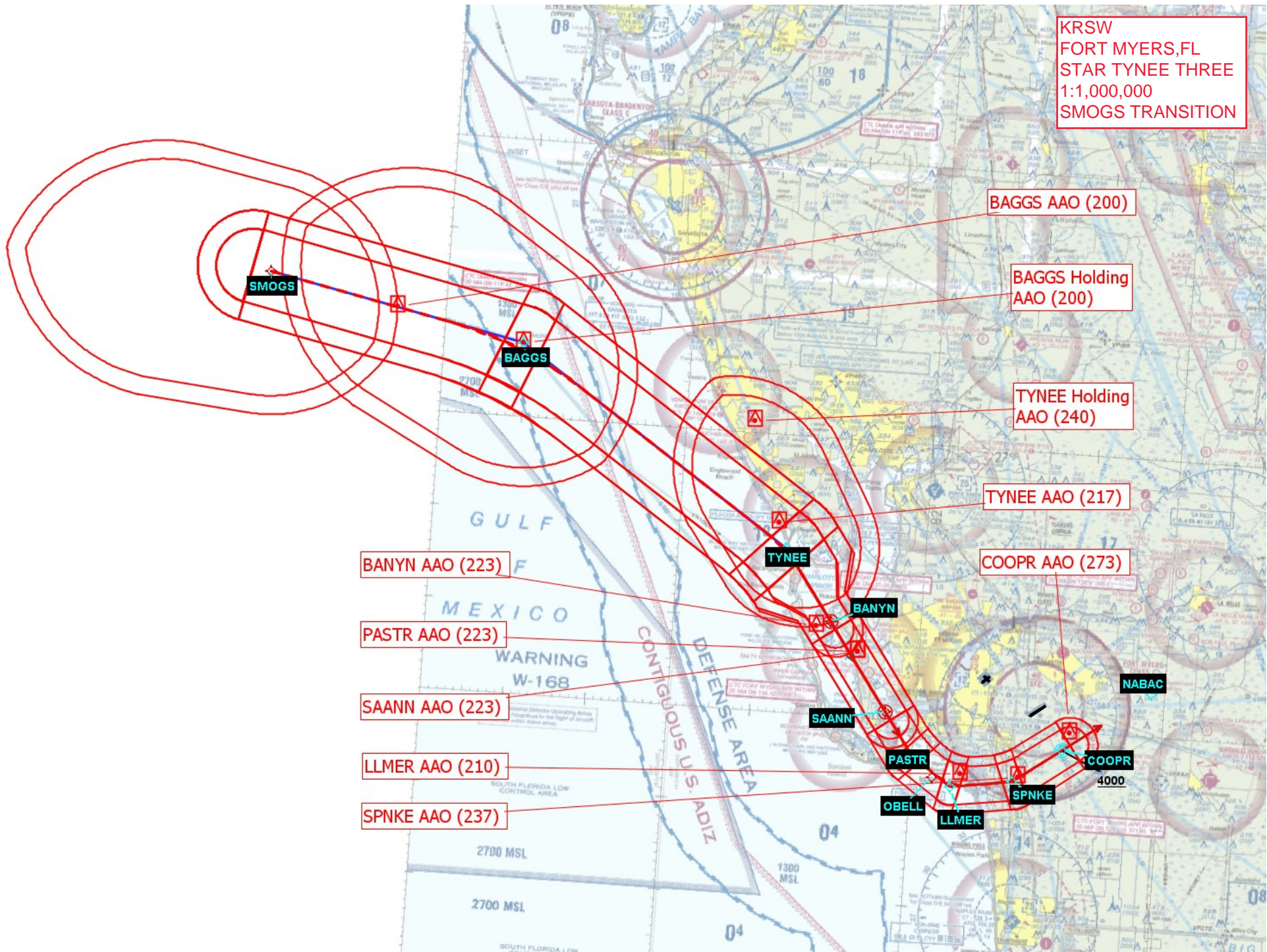
SAANN AAO (223)

LLMER AAO (210)

SPNKE AAO (237)



KRSW
FORT MYERS, FL
STAR TYNEE THREE
1:1,000,000
SMOGS TRANSITION



BAGGS AAO (200)

BAGGS Holding AAO (200)

TYNEE Holding AAO (240)

TYNEE AAO (217)

COOPR AAO (273)

BANYN AAO (223)

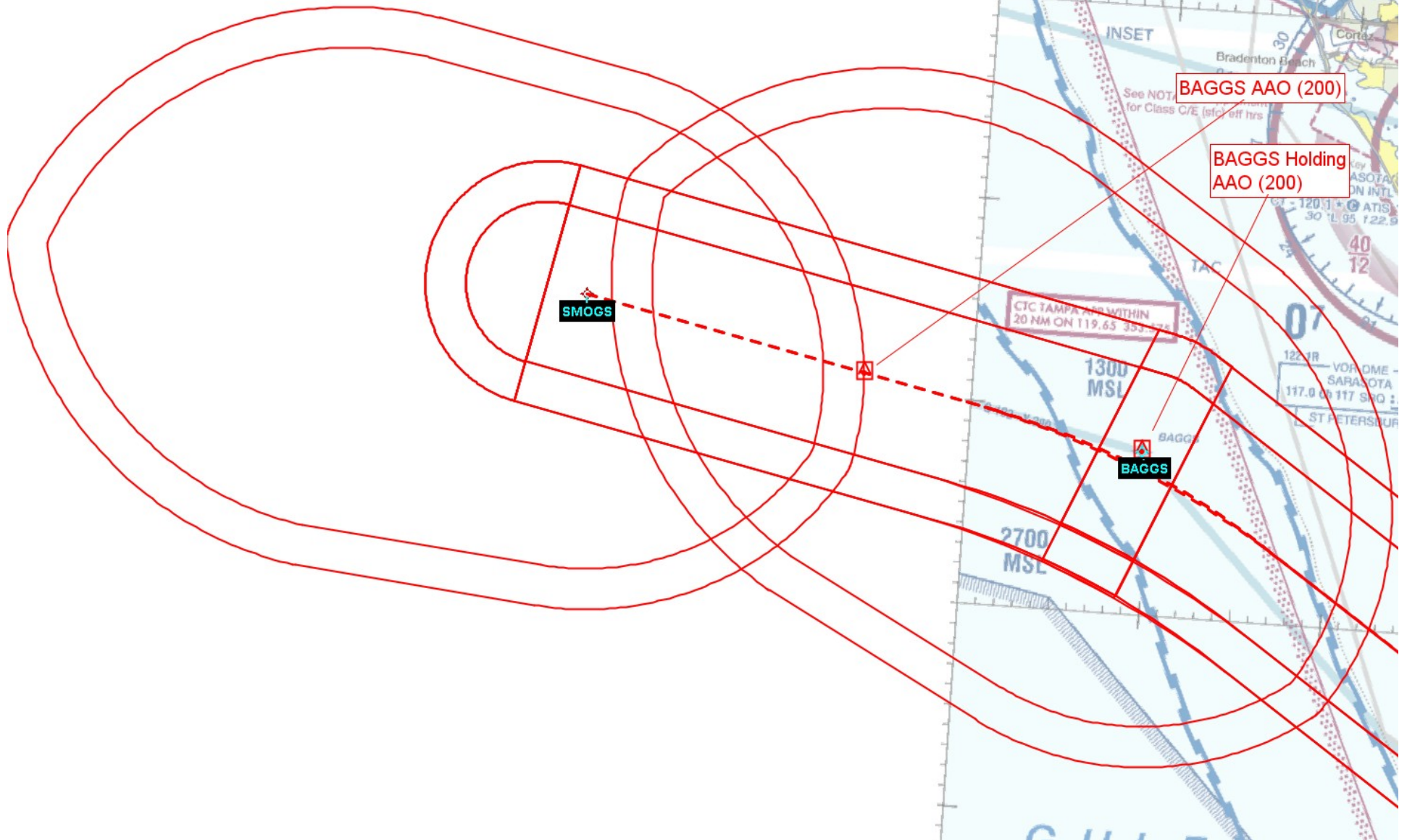
PASTR AAO (223)

SAANN AAO (223)

LLMER AAO (210)

SPNKE AAO (237)

KRSW
FORT MYERS, FL
STAR TYNEE THREE
1:500,000
SMOGS TO BAGGS (SMOGS TRANSITION)



KRSW
FORT MYERS,FL
STAR TYNEE THREE
1:500,000
BAGGS TO TYNEE TO BANYN
(SMOGS TRANSITION)

BAGGS Holding
AAO (200)

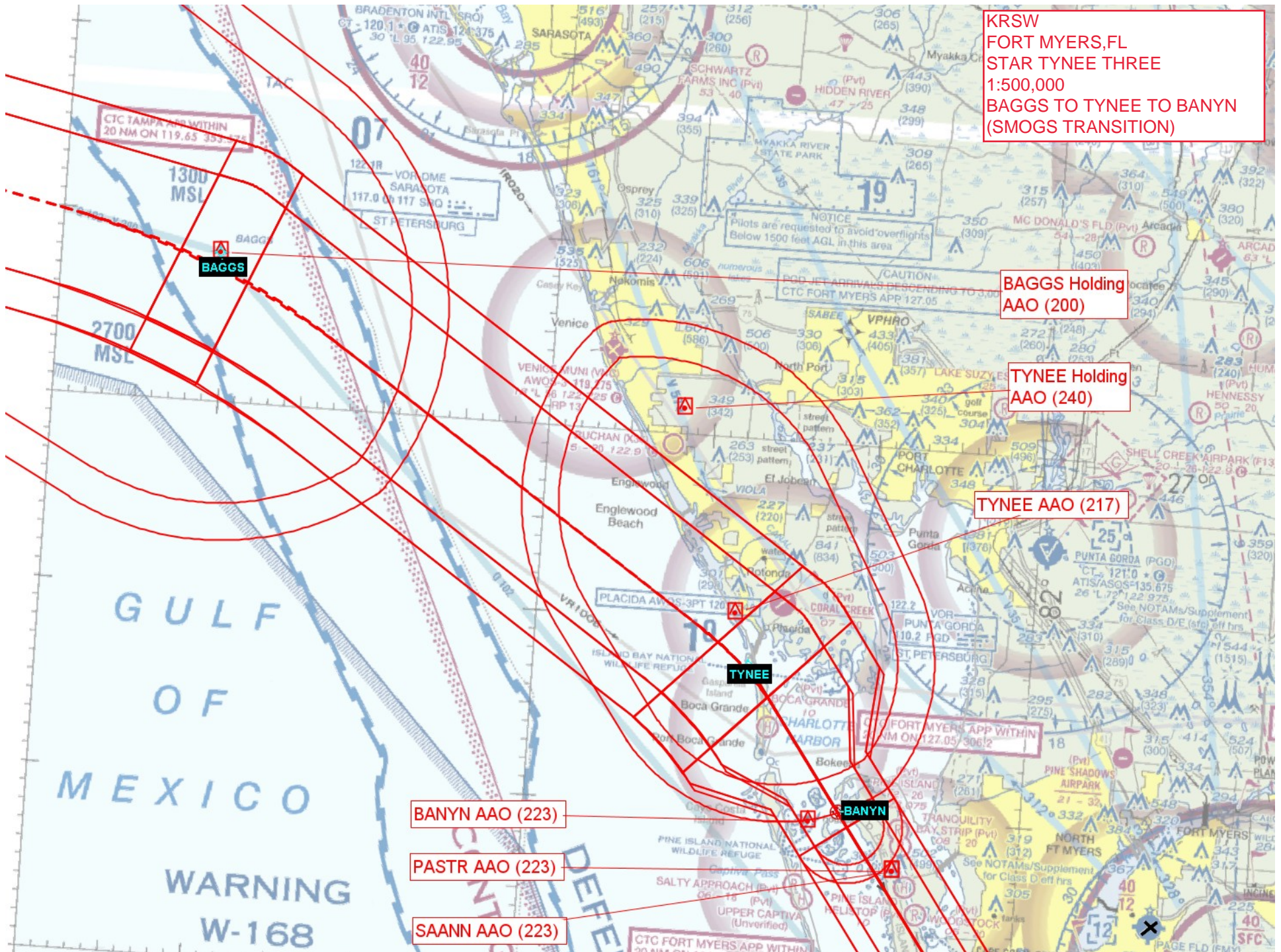
TYNEE Holding
AAO (240)

TYNEE AAO (217

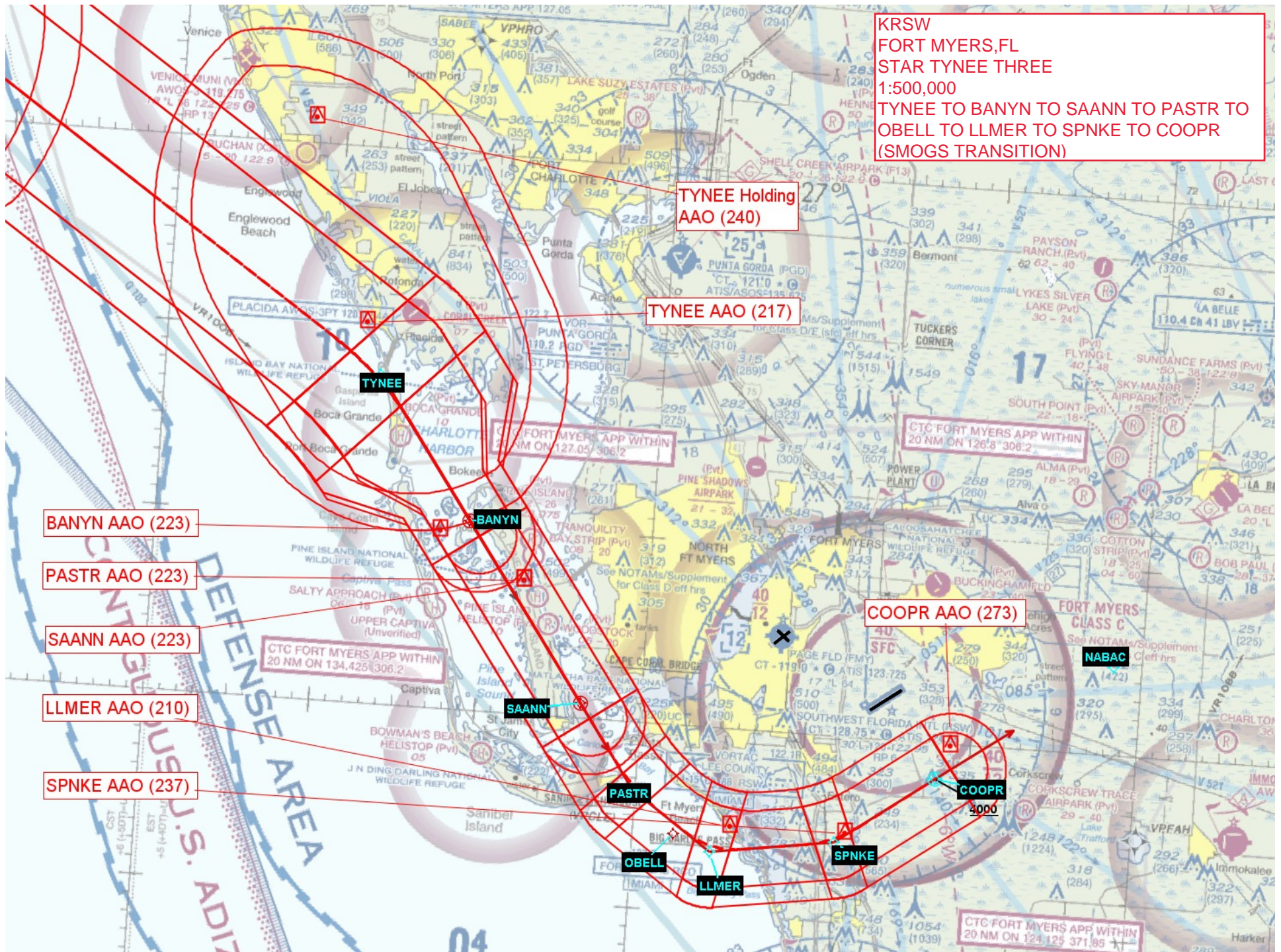
BANYN AAO (223)

PASTR AAO (223)

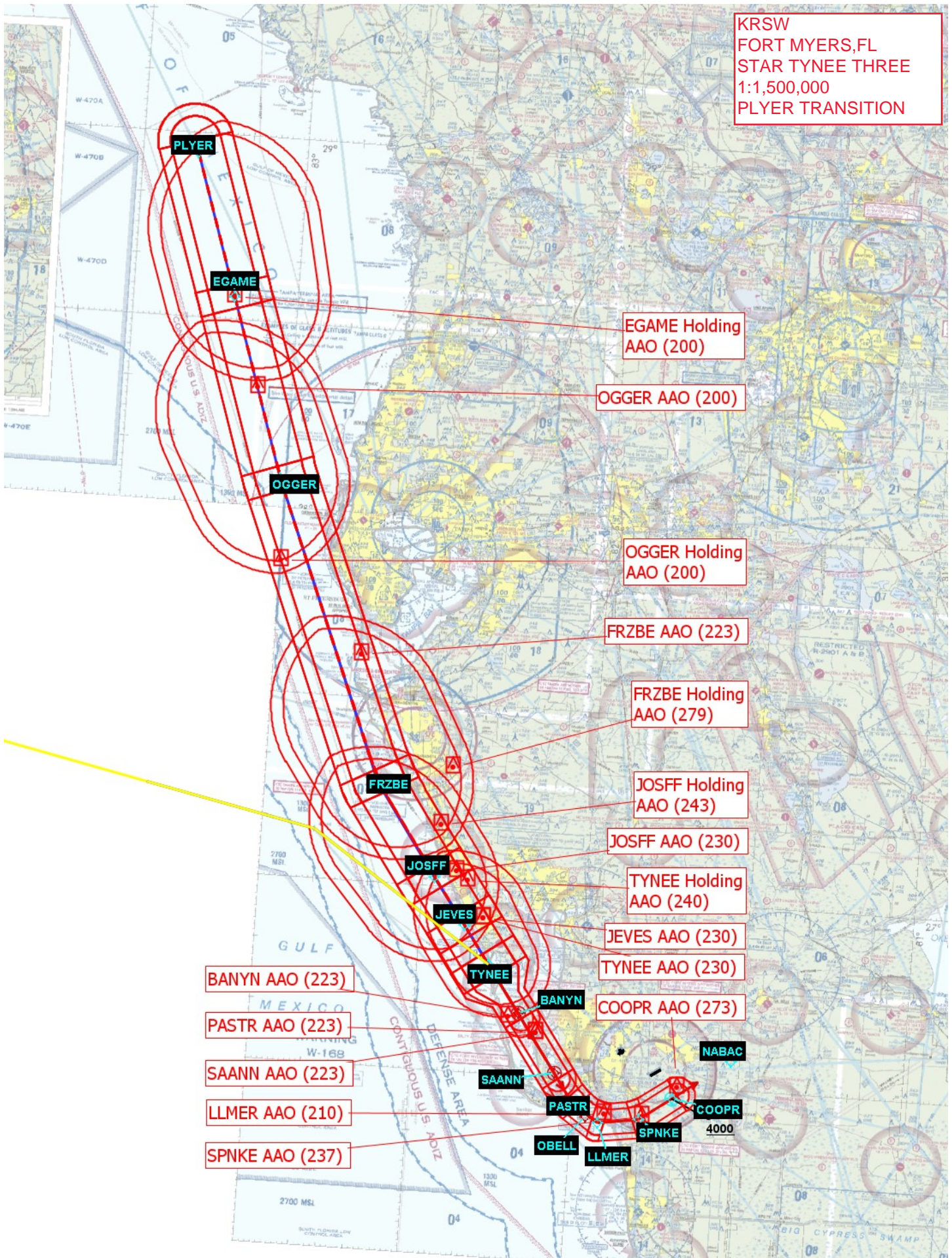
SAANN AAO (223)



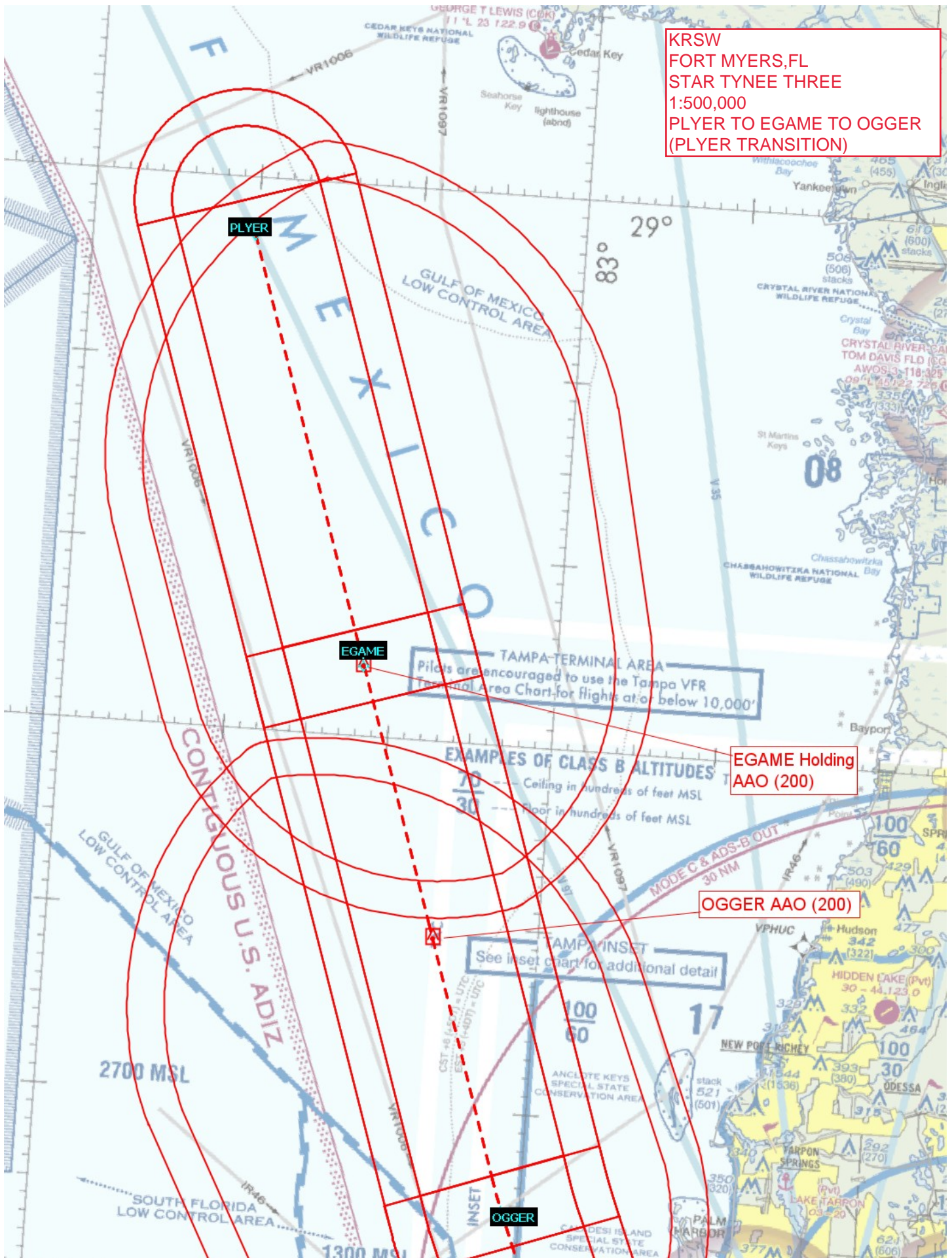
KRSW
FORT MYERS, FL
STAR TYNEE THREE
1:500,000
TYNEE TO BANYN TO SAANN TO PASTR TO
OBELL TO LLMER TO SPNKE TO COOPR
(SMOGS TRANSITION)



KRSW
FORT MYERS, FL
STAR TYNEE THREE
1:1,500,000
PLYER TRANSITION



KRSW
FORT MYERS, FL
STAR TYNEE THREE
1:500,000
PLYER TO EGAME TO OGGER
(PLYER TRANSITION)



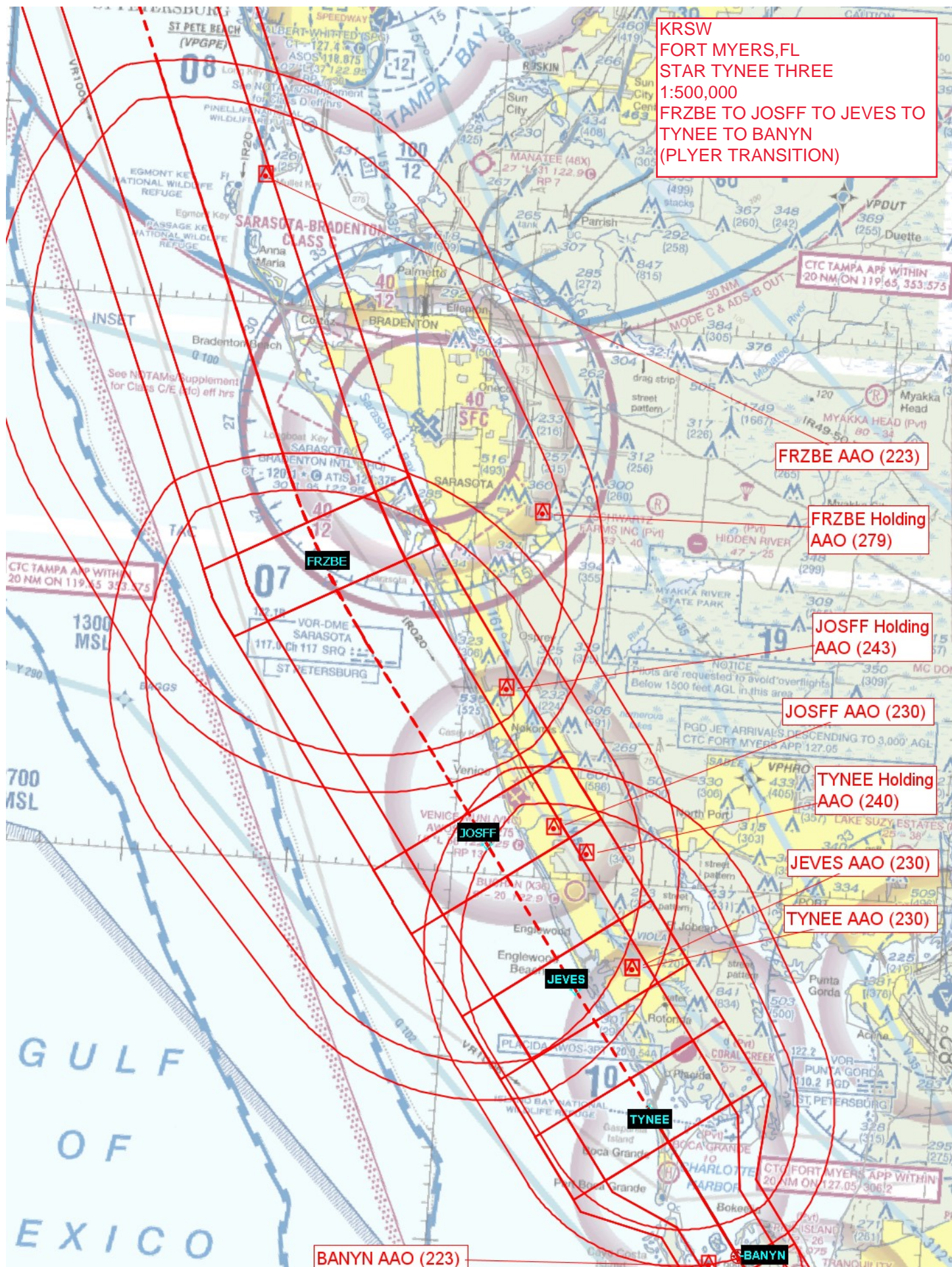
KRSW
FORT MYERS, FL
STAR TYNEE THREE
1:500,000
OGGER TO FRZBE
(PLYER TRANSITION)

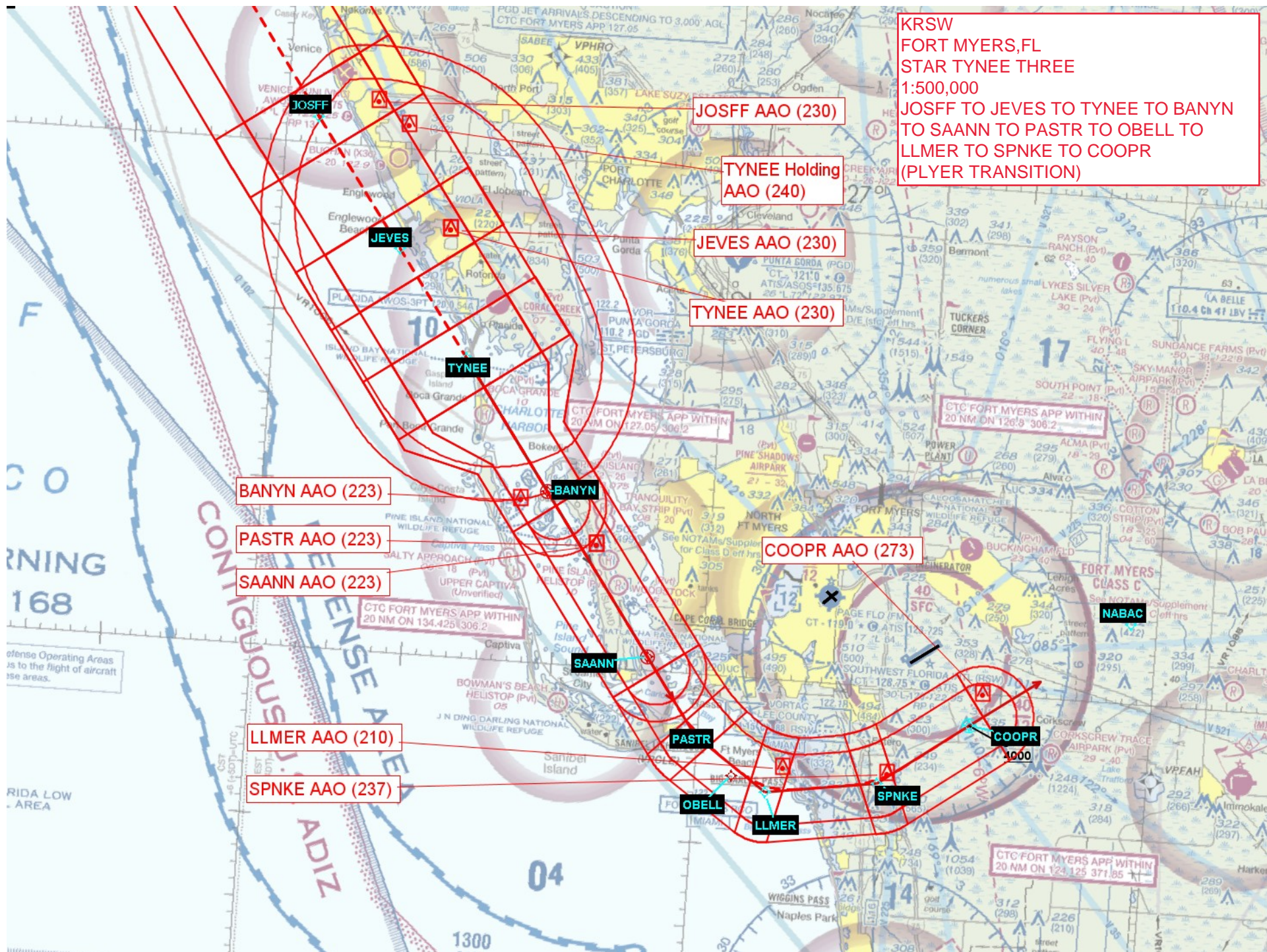
OGGER Holding
AAO (200)

FRZBE AAO (223)

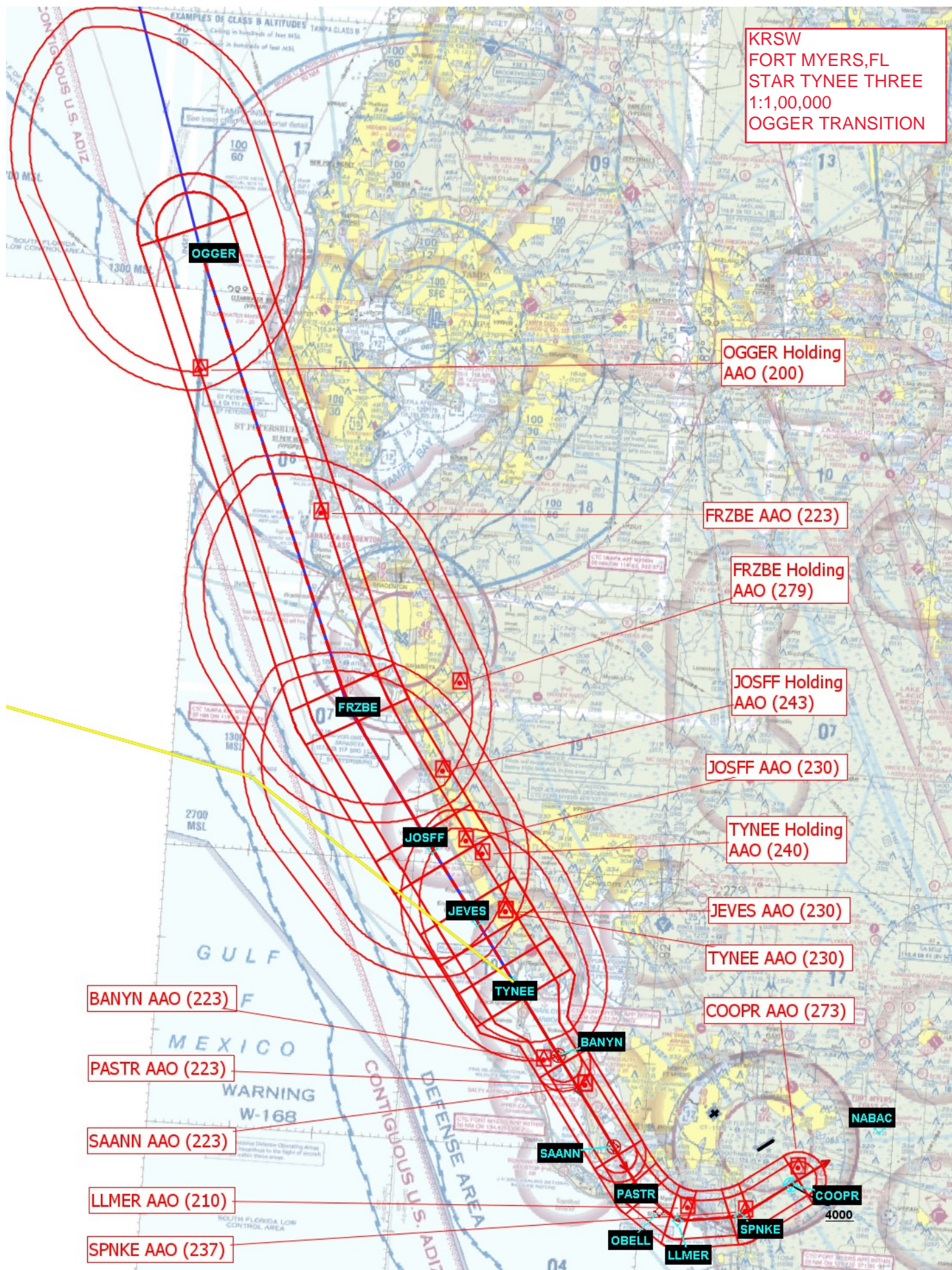
FRZBE Holding
AAO (279)

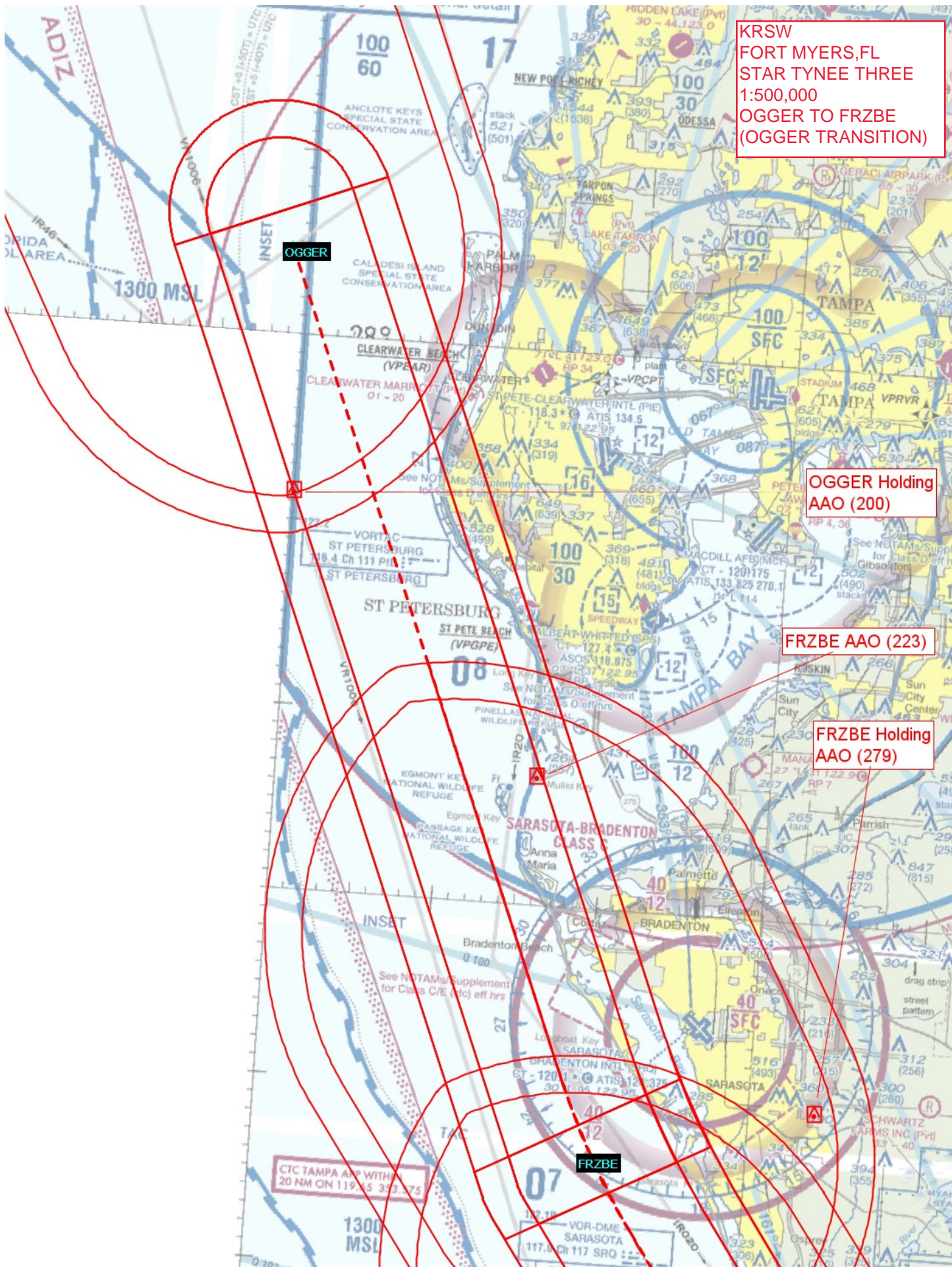
CTC TAMPA APP WITHIN
20 NM ON 119.55 353.375





KRSW
FORT MYERS, FL
STAR TYNEE THREE
1:1,00,000
OGGER TRANSITION





KRSW
FORT MYERS, FL
STAR TYNEE THREE
1:500,000
OGGER TO FRZBE
(OGGER TRANSITION)

OGGER Holding
AAO (200)

FRZBE AAO (223)

FRZBE Holding
AAO (279)

CTC TAMPA APP WITHIN
20 NM ON 119.25 333.75

KRSW
FORT MYERS,FL
STAR TYNEE THREE
1:500,000
FRZBE TO JOSFF TO JEVES TO
TYNEE TO BANYN
(OGGER TRANSITION)

CTC TAMPA APP WITHIN
20 NM ON 119.65, 353.575

FRZBE AAO (223)

FRZBE Holding
AAO (279)

JOSFF Holding
AAO (243)

JOSFF AAO (230)

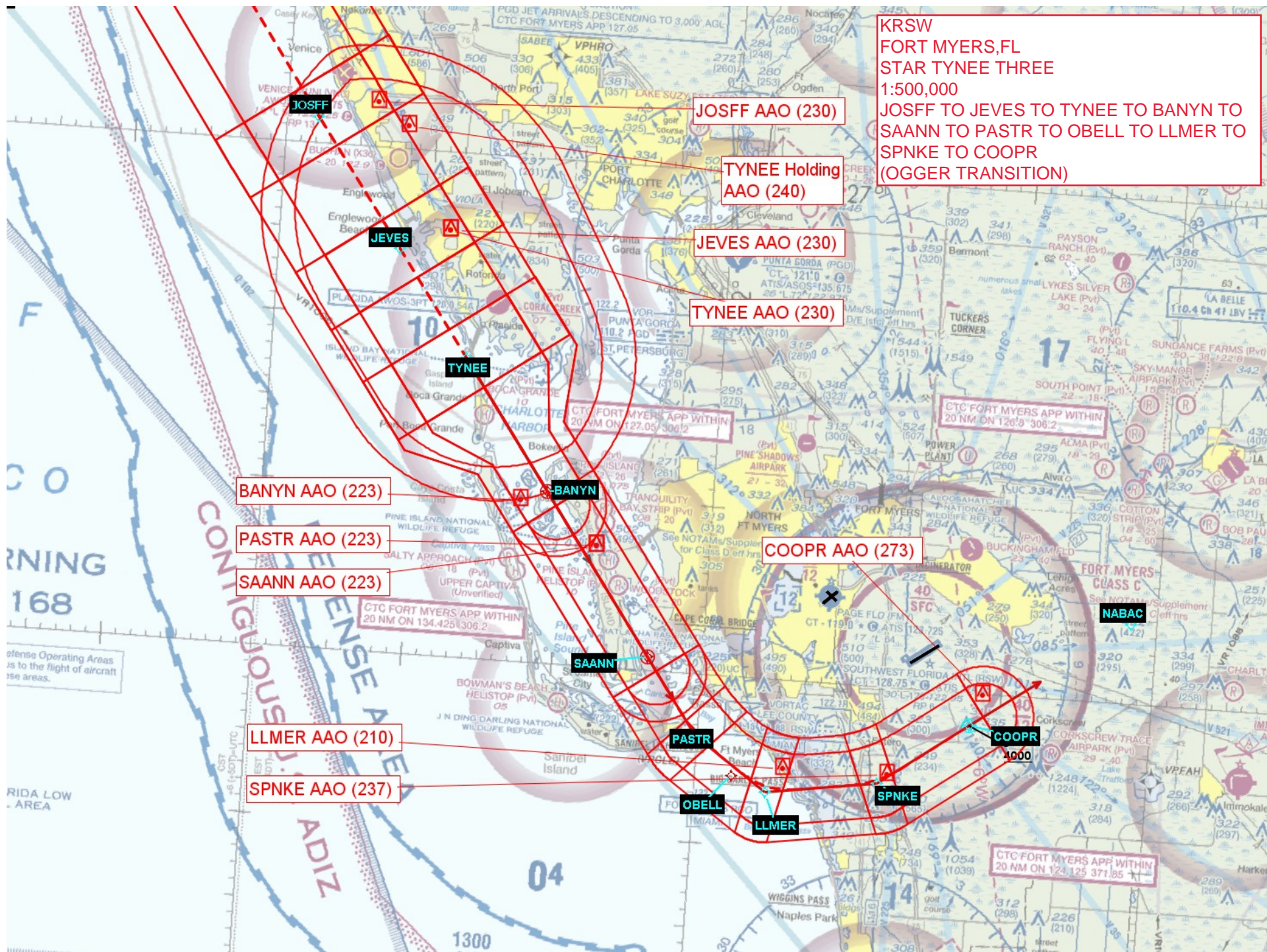
TYNEE Holding
AAO (240)

JEVES AAO (230)

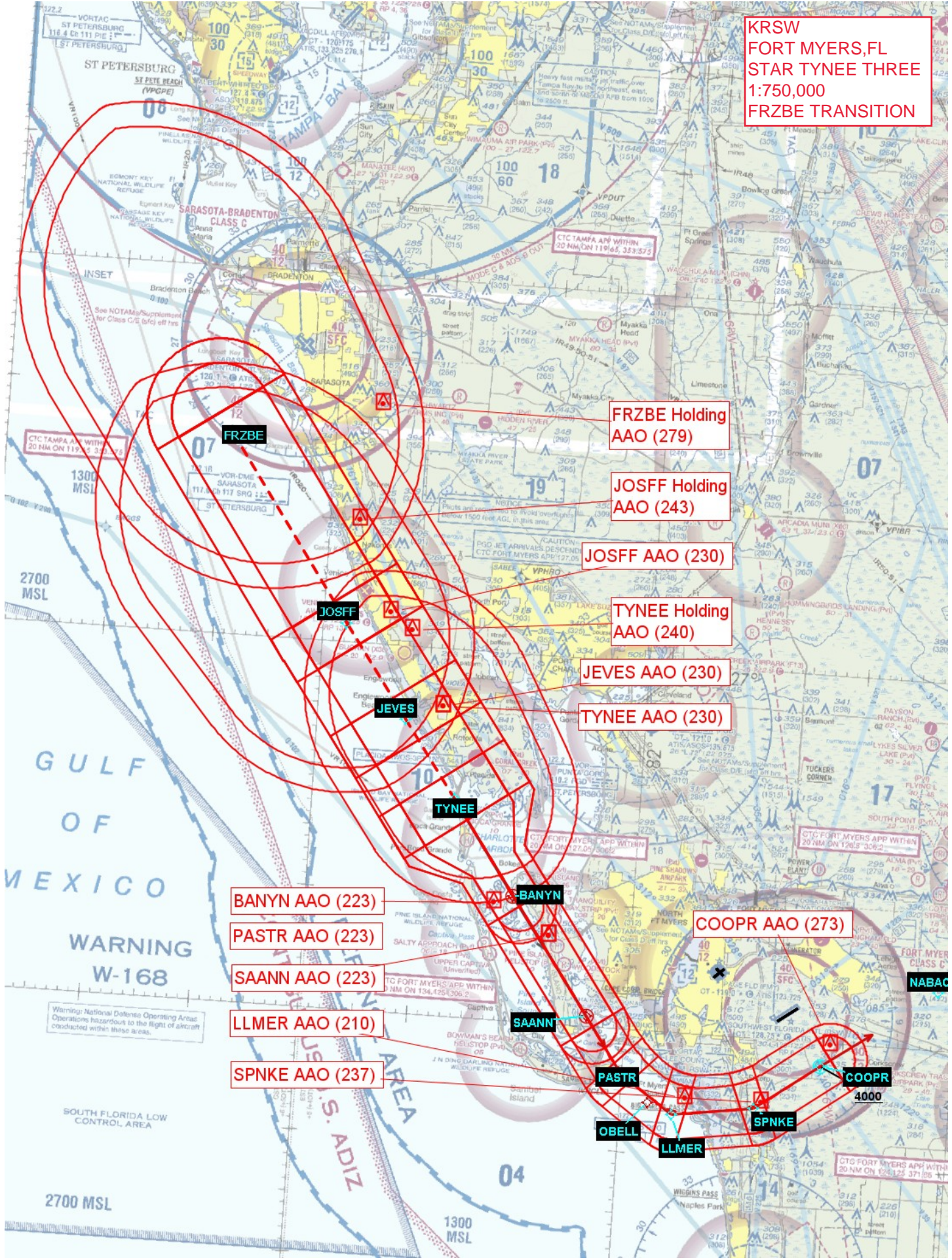
TYNEE AAO (230)

BANYN AAO (223)

CTO FORT MYERS APP WITHIN
20 NM ON 127.05 306.2



KRSW
FORT MYERS, FL
STAR TYNEE THREE
1:750,000
FRZBE TRANSITION



- FRZBE
- JOSFF
- JEVS
- TYNEE
- BANYN
- COOPR
- SPNKE
- LLMER
- PASTR
- OBELL
- FRZBE Holding AAO (279)
- JOSFF Holding AAO (243)
- JOSFF AAO (230)
- TYNEE Holding AAO (240)
- JEVS AAO (230)
- TYNEE AAO (230)
- BANYN AAO (223)
- PASTR AAO (223)
- SAANN AAO (223)
- LLMER AAO (210)
- SPNKE AAO (237)
- COOPR AAO (273)
- NABAC

KRSW
FORT MYERS, FL
STAR TYNEE THREE
1:500,000
FRZBE TO JOSFF TO JEVES TO
TYNEE TO BANYN
(FRZBE TRANSITION)

