

## DME DME Assessment Results for TYNEE3 path DOWRY\_BANYN

### Results Summary

Flyability:	Completed
DME/DME:	Completed - No Critical DMEs
Name:	Erik J-CTR John
Project File:	C:\Users\Erik J-CTR John\OneDrive - Federal Aviation Administration\Desktop\PROJECT FILES\ZJX_ZMA VOR MON\KRSW TYNEE3 STAR\KRSW TYNEE3 (RNAV) STAR DME 24 NOV 2023.tgs
Output File:	C:\Users\Erik J-CTR John\OneDrive - Federal Aviation Administration\Desktop\PROJECT FILES\ZJX_ZMA VOR MON\KRSW TYNEE3 STAR\FOR SUBMITTAL\KRSW [IFPA] TYNEE3 20231124_0714 EST\DOWNRY_BANYN\KRSW TYNEE3 RNAV STAR DOWRY_BANYN 20231124_0714 EST.pdf
Procedure Name:	TYNEE3
Software: DmeDmePlugin:	7.2.1
Date/Time:	11/24/2023 07:14 EST
Databases:	DTED 0 MAX

### Failures

No Failures

### Warnings

GNSS\_ONLY DOWRY\_\_\_\_\_CIGAR is GNSS Only and was not evaluated

### Informational

GNSS\_ONLY DOWRY\_\_\_\_\_CIGAR is GNSS Only and was not evaluated

### Notes For Flight Check

DOWRY transition is GNSS only.

### Flight Plan

Name	Type	Lat/Lon	Altitude (ft)	VNAV Mode	Ground Speed (kts)	Turn Type	Leg Type
DOWRY	WP	N27° 33' 38.19", W085° 09' 52.66"	18000	VNAV	240	FLY_BY	TF
CIGAR	WP	N27° 29' 36.61", W084° 46' 59.51"	18000	VNAV	240	FLY_BY	TF
SMOGS	WP	N27° 13' 54.93", W083° 21' 33.48"	18000	VNAV	240	FLY_BY	TF
BAGGS	WP	N27° 08' 03.28", W082° 50' 27.20"	15000	VNAV	240	FLY_BY	TF
TYNEE	WP	N26° 47' 50.66", W082° 17' 02.65"	11000	VNAV	240	FLY_BY	TF
BANYN	WP	N26° 40' 16.90", W082° 11' 04.48"	0	VNAV	240	FLY_OVER	TF

### Flyability

Flight Type:	RNAV_STAR
Selected Airport:	KRSW [IFPA]
Climb Gradient:	None assigned
Speeds:	200 Ground Speed to 11000 FT
	240 Ground Speed to 18000 FT
	260 Ground Speed to 24000 FT
	340 Ground Speed above 24000 FT
Descent During a Turn:	Allowed
VNAV Mode:	Flight Plan

## DME DME Assessment Results for TYNEE3 path DOWRY\_BANYN

DME/DME	
RNP:	RNP 2
Flight Mode:	Manual
Line of Sight (DTED Level 0 Max):	Evaluated
Inertial Drift:	Enabled
Initial Drift:	0.558 NM
INS Drift Rate:	8.0 NM/Hour
Range Mode:	OSV
RNP Edges:	Evaluated
Min DME Range:	3.0 NM
DME Types:	DME, VOR-DME, VORTAC, TACAN
DME Include Angles:	30 to 150
Critical DMEs:	Not Allowed
DoD Facilities:	Not included
Foreign Facilities:	Not included
High DMEs:	Included
Low DMEs:	Included
Terminal DMEs:	Included
Flight Check DMEs:	Not selected
Higher Altitudes:	Not Evaluated
Near Maximum Altitude:	Not Evaluated
Automatic ESVs:	Not enabled
Disabled DMEs:	ZFP

DME/DME (Continued)										
DMEs Used										
#	Name	Lat/Lon	MAGVAR	Range	Type	Source	Critical	Status	Time	Distance
1	LAL	N27° 59' 10.31", W082° 00' 50.06"	1.0 E	130	H	IFPA	NO	Enabled	28.5 %	28.5 %
2	SRQ	N27° 24' 25.26", W082° 33' 49.18"	5.0 W	130	DH	IFPA	NO	Enabled	54.5 %	54.6 %
3	TRV	N27° 40' 42.33", W080° 29' 23.01"	7.0 W	130	H	IFPA	NO	Enabled	19.8 %	19.8 %
4	PIE	N27° 54' 27.95", W082° 41' 03.51"	5.0 W	130	H	IFPA	NO	Enabled	72.3 %	72.3 %
5	OCF	N29° 10' 38.92", W082° 13' 34.80"	0.0 E	40	L	IFPA	NO	Enabled	6.1 %	6.1 %
6	LBV	N26° 49' 41.47", W081° 23' 29.18"	1.0 E	40	L	IFPA	NO	Enabled	29.3 %	29.3 %
7	RSW	N26° 31' 47.59", W081° 46' 32.77"	2.0 W	40	L	IFPA	NO	Enabled	58.5 %	58.5 %
8	ORL	N28° 32' 33.80", W081° 20' 06.05"	0.0 E	130	H	IFPA	NO	Enabled	5.1 %	5.1 %
9	ZFP	N26° 33' 19.25", W078° 41' 52.25"	3.0 W	130	H	IFPA	NO	Disabled		

# DME DME Assessment Results for TYNEE3 path DOWRY\_BANYN

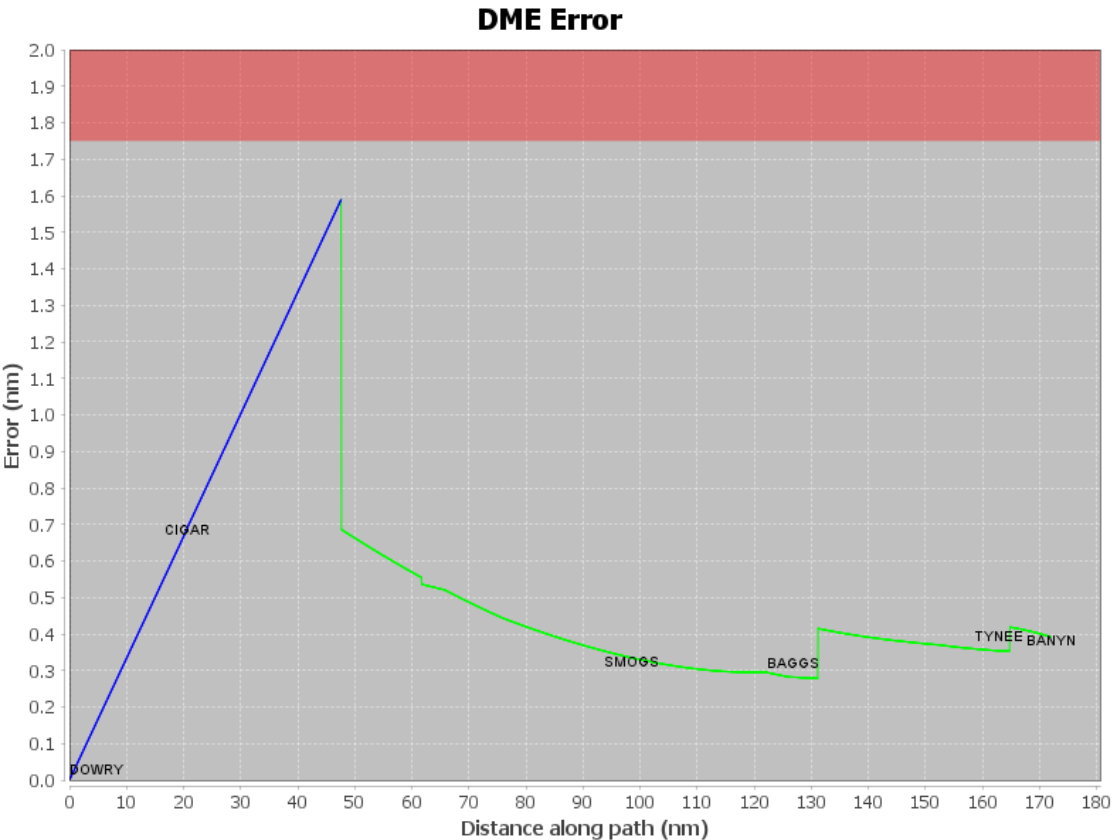
Flight Check DME Selection						
Distance [NM]	Selected DMEs					Alternate
0.0						
26.9	RSW	PIE				
37.3	RSW	PIE	ORL			
46.2	RSW	PIE				
48.8	RSW	PIE	OCF	SRQ		
55.7	RSW	PIE	OCF	LBV	SRQ	
59.3	RSW	PIE	LBV	LAL	SRQ	
60.6	RSW	PIE	LBV	LAL		
62.5	RSW	PIE	LBV	LAL	SRQ	
106.1	RSW	LAL	SRQ	PIE		
106.7	RSW	SRQ	PIE			
110.0	RSW	SRQ	PIE	TRV		
110.5	TRV	PIE	SRQ			
134.1	TRV	SRQ	PIE	RSW		
144.1	PIE	RSW				
150.7	PIE	RSW	SRQ			

Inertial Drift Segments			
#	Start Location	End Location	Length [NM]
1	N27° 29' 36.61", W084° 46' 59.51"	N27° 24' 15.98", W084° 17' 19.18"	26.9303

Available DMEs by Waypoints			
Waypoint Before	Waypoint After	DME List	Suggested DMEs
DOWRY	CIGAR		
CIGAR	SMOGS	LBV, OCF, SRQ, LAL, RSW, ORL, PIE	
SMOGS	BAGGS	LBV, SRQ, LAL, RSW, PIE	
BAGGS	TYNEE	LBV, SRQ, LAL, RSW, TRV, PIE	
TYNEE	BANYN	SRQ, RSW, TRV, PIE	

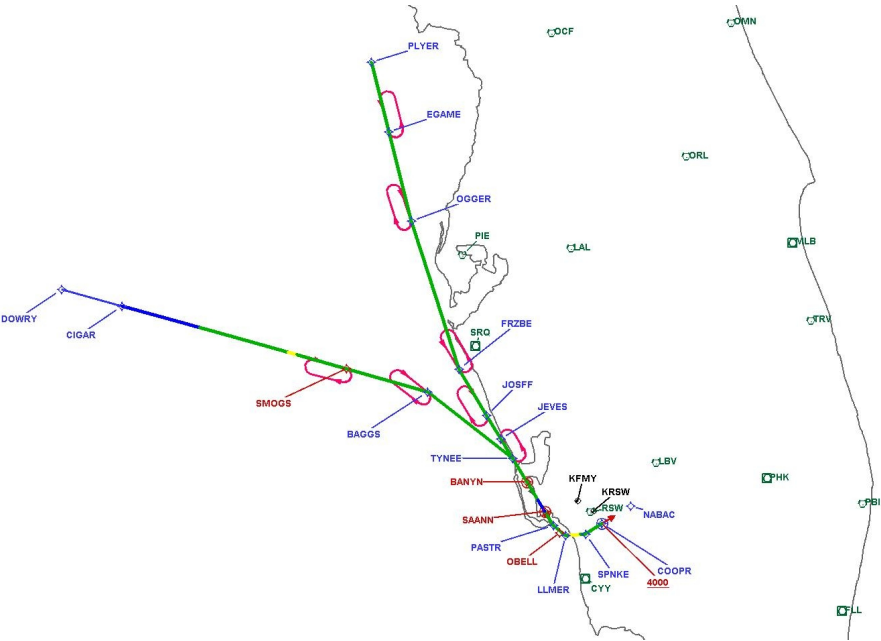
# DME DME Assessment Results for TYNEE3 path DOWRY\_BANYN

User Data Files								
#	File Name							
None								
User DMEs								
#	Name	Lat/Lon	MAGVAR	Range	Elevation [ft]	Frequency	Replaces	Status
1	PHK FAA 900991-30 PHK [IFPA]	N26° 46' 57.87", W080° 41' 29.16"	0.0 E	130	15.5	115.4	PHK FAA 900991-30	
ESV:		Bearing [True]: 235.0° to 300.0° Bearing [Mag]: 235.0° to 300.0°				Arc Distance: Out to 80.0 NM Altitude: 4000.0 to 15000.0 ft		
2	TRV FAA 704266-49 TRV [IFPA]	N27° 40' 42.33", W080° 29' 23.01"	7.0 W	130	19.5	117.3	TRV FAA 704266-49	
ESV:		Bearing [True]: 238.0° to 260.0° Bearing [Mag]: 245.0° to 267.0°				Arc Distance: Out to 130.0 NM Altitude: 10000.0 to 20000.0 ft		
3	LBV FAA 755486-51 LBV [IFPA]	N26° 49' 41.47", W081° 23' 29.18"	1.0 E	40	30	110.4	LBV FAA 755486-51	
ESV:		Bearing [True]: 231.0° to 321.0° Bearing [Mag]: 230.0° to 320.0°				Arc Distance: Out to 130.0 NM Altitude: 15000.0 to 18000.0 ft		
4	ORL FAA 694096-38 ORL [IFPA]	N28° 32' 33.80", W081° 20' 06.05"	0.0 E	130	101.6	112.2	ORL FAA 694096-38	
ESV:		Bearing [True]: 242.0° to 256.0° Bearing [Mag]: 242.0° to 256.0°				Arc Distance: Out to 165.0 NM Altitude: 18000.0 to 35000.0 ft		
5	RSW FAA 191354-15 RSW [IFPA]	N26° 31' 47.59", W081° 46' 32.77"	2.0 W	40	24.8	114.15	RSW FAA 191354-15	
ESV:		Bearing [True]: 293.0° to 313.0° Bearing [Mag]: 295.0° to 315.0°				Arc Distance: Out to 130.0 NM Altitude: 12800.0 to 18000.0 ft		
6	SRQ FAA 070100-39 SRQ [IFPA]	N27° 24' 25.26", W082° 33' 49.18"	5.0 W	130	19	117.0	SRQ FAA 070100-39	
ESV:		Bearing [True]: 87.0° to 148.0° Bearing [Mag]: 92.0° to 153.0°				Arc Distance: Out to 77.0 NM Altitude: 4000.0 to 5000.0 ft		
7	RSW FAA 191354-60 RSW [IFPA]	N26° 31' 47.59", W081° 46' 32.77"	2.0 W	40	24.8	114.15	RSW FAA 191354-60	
ESV:		Bearing [True]: 288.0° to 303.0° Bearing [Mag]: 290.0° to 305.0°				Arc Distance: Out to 145.0 NM Altitude: 15000.0 to 18100.0 ft		
8	OCF FAA 714002-27 OCF [IFPA]	N29° 10' 38.92", W082° 13' 34.80"	0.0 E	40	78.3	113.7	OCF FAA 714002-27	
ESV:		Bearing [True]: 215.0° to 230.0° Bearing [Mag]: 215.0° to 230.0°				Arc Distance: Out to 145.0 NM Altitude: 13500.0 to 18100.0 ft		
9	OMN FAA 694106-43 OMN [IFPA]	N29° 18' 11.70", W081° 06' 45.71"	0.0 E	130	24	112.6	OMN FAA 694106-43	
ESV:		Bearing [True]: 150.0° to 355.0° Bearing [Mag]: 150.0° to 355.0°				Arc Distance: Out to 155.0 NM Altitude: 18000.0 to 33000.0 ft		
10	OCF FAA 714002-22 OCF [IFPA]	N29° 10' 38.92", W082° 13' 34.80"	0.0 E	40	78.3	113.7	OCF FAA 714002-22	
ESV:		Bearing [True]: 220.0° to 270.0° Bearing [Mag]: 220.0° to 270.0°				Arc Distance: Out to 70.0 NM Altitude: 12000.0 to 18000.0 ft		
11	PIE FAA 698212-41 PIE [IFPA]	N27° 54' 27.95", W082° 41' 03.51"	5.0 W	130	4.8	116.4	PIE FAA 698212-41	
ESV:		Bearing [True]: 95.0° to 245.0° Bearing [Mag]: 100.0° to 250.0°				Arc Distance: Out to 82.0 NM Altitude: 5000.0 to 16000.0 ft		

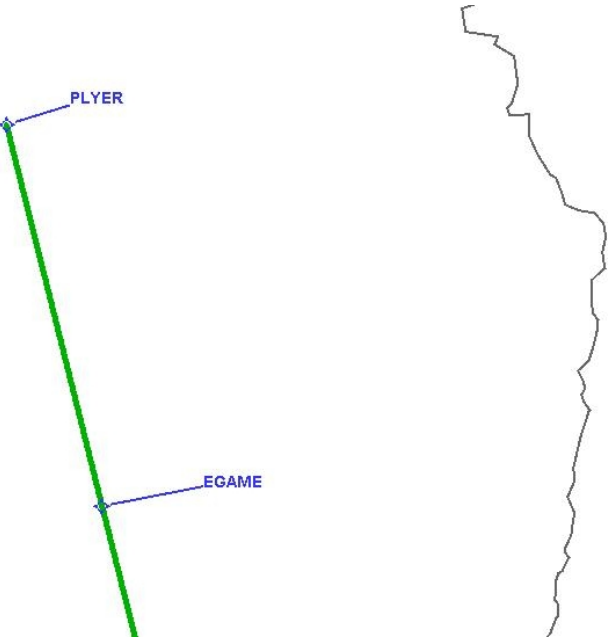


DME DME Assessment Results for TYNEE3 path DOWRY\_BANYN

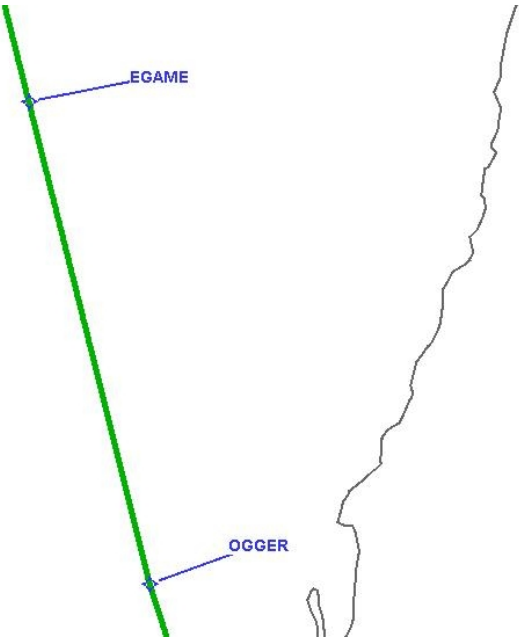
Graphic Depiction 1



Graphic Depiction 2



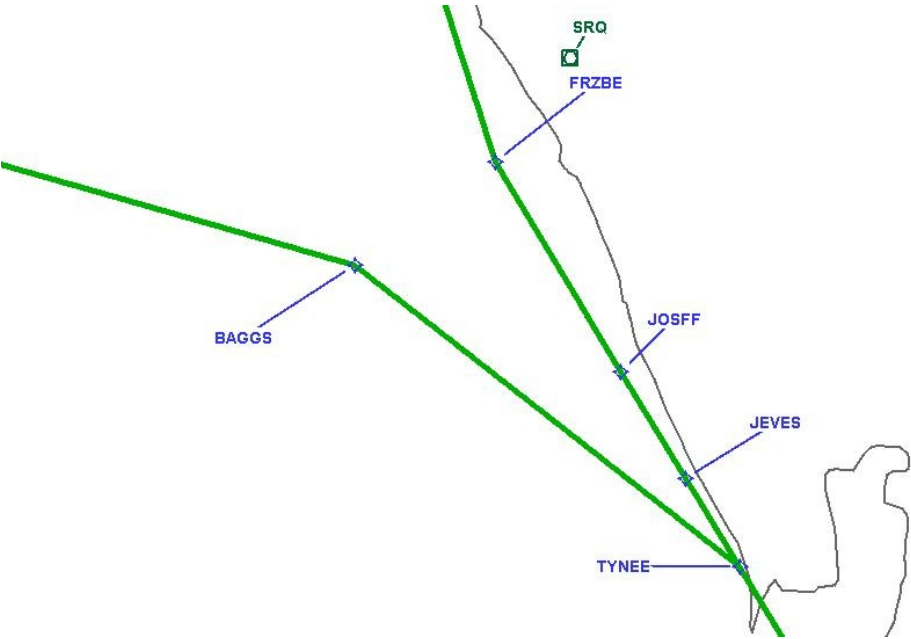
Graphic Depiction 3



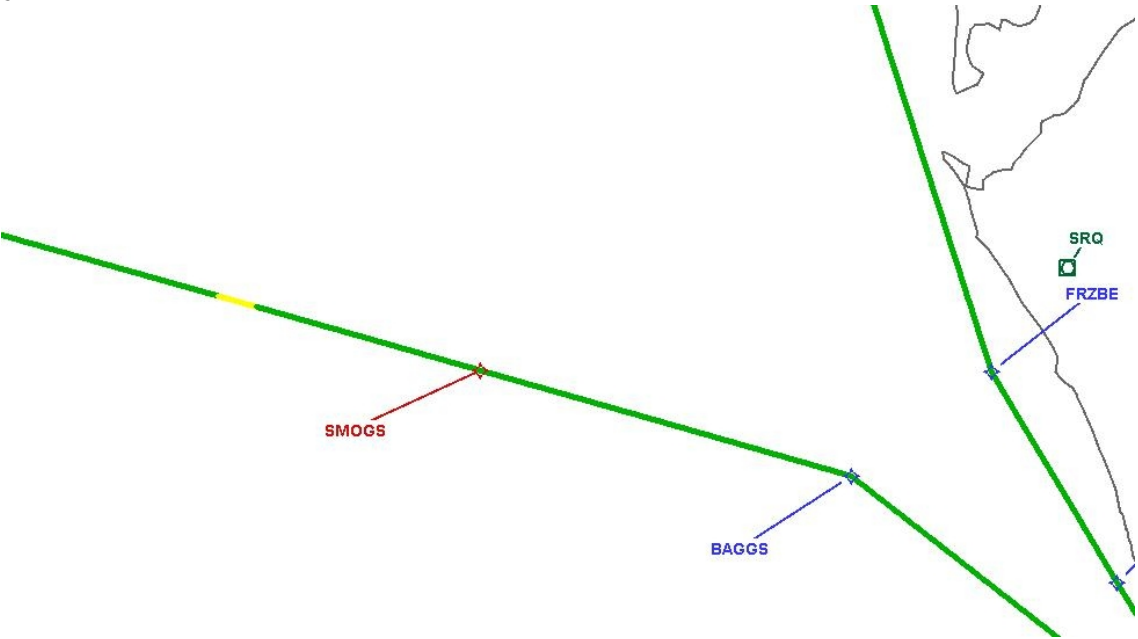


DME DME Assessment Results for TYNEE3 path DOWRY\_BANYN

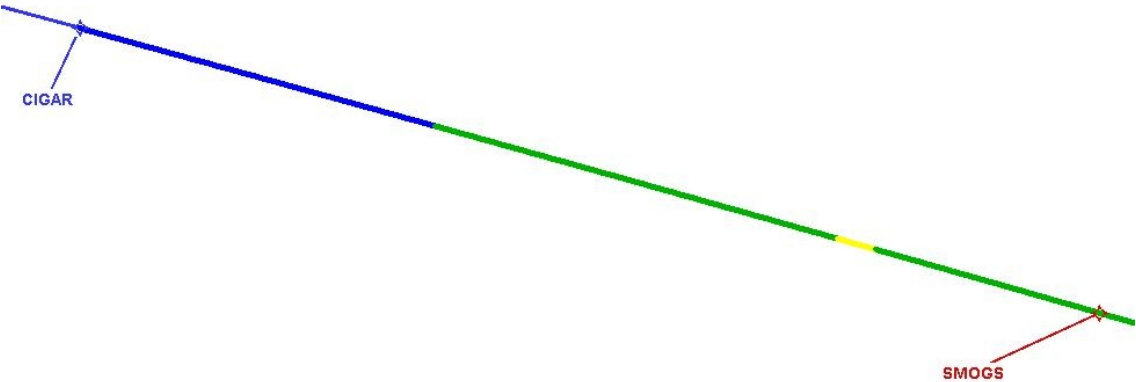
Graphic Depiction 4



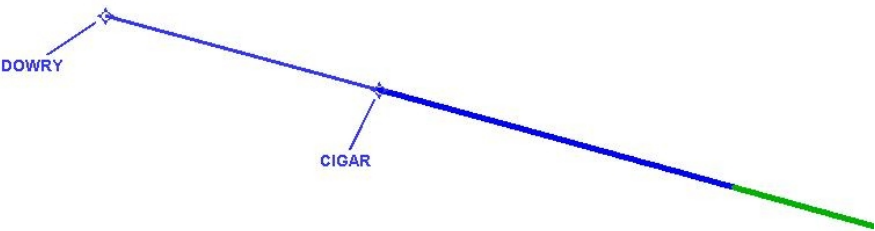
Graphic Depiction 5



Graphic Depiction 6

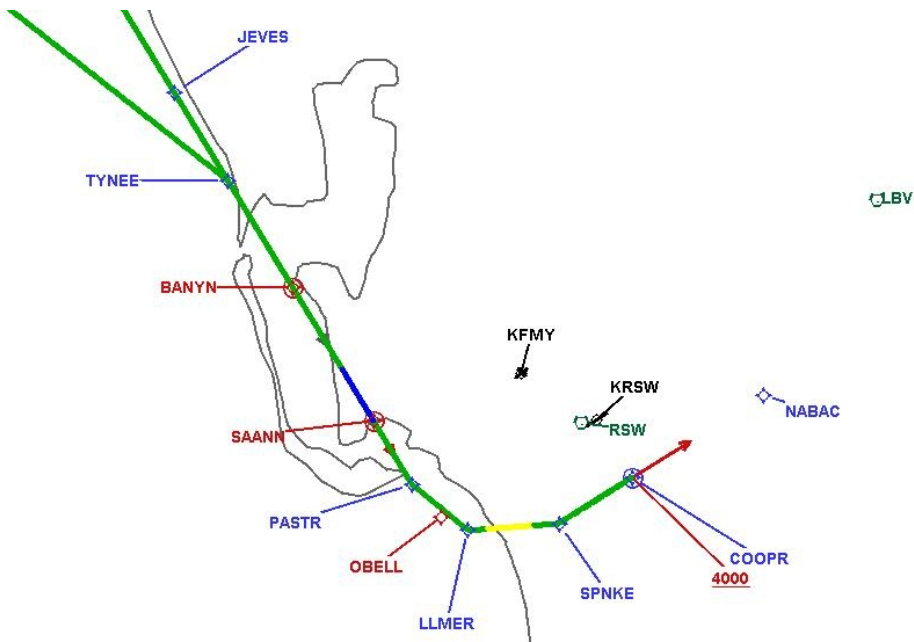


Graphic Depiction 7



DME DME Assessment Results for TYNEE3 path DOWRY\_BANYN

Graphic Depiction 8



## DME DME Assessment Results for TYNEE3 path PLYER\_COOPR

### Results Summary

Flyability:	Completed
DME/DME:	Completed - No Critical DMEs
Name:	Erik J-CTR John
Project File:	C:\Users\Erik J-CTR John\OneDrive - Federal Aviation Administration\Desktop\PROJECT FILES\ZJX_ZMA VOR MON\KRSW TYNEE3 STAR\KRSW TYNEE3 (RNAV) STAR DME 24 NOV 2023.tgs
Output File:	C:\Users\Erik J-CTR John\OneDrive - Federal Aviation Administration\Desktop\PROJECT FILES\ZJX_ZMA VOR MON\KRSW TYNEE3 STAR\FOR SUBMITTAL\KRSW [IFPA] TYNEE3 20231124_0714 EST\PLYER_COOPR\KRSW TYNEE3 RNAV STAR PLYER COOPR 20231124_0714 EST.pdf
Procedure Name:	TYNEE3
Software: DmeDmePlugin:	7.2.1
Date/Time:	11/24/2023 07:14 EST
Databases:	DTED 0 MAX

### Failures

No Failures

### Warnings

No Warnings

### Informational

No Informational

### Notes For Flight Check

DOWRY transition is GNSS only.

### Flight Plan

Name	Type	Lat/Lon	Altitude (ft)	VNAV Mode	Ground Speed (kts)	Turn Type	Leg Type
PLYER	WP	N28° 56' 51.36", W083° 20' 08.59"	18000	VNAV	240	FLY_BY	TF
EGAME	WP	N28° 33' 51.38", W083° 11' 45.28"	18000	VNAV	240	FLY_BY	TF
OGGER	WP	N28° 04' 43.19", W083° 01' 07.67"	18000	VNAV	240	FLY_BY	TF
FRZBE	WP	N27° 16' 24.53", W082° 39' 28.03"	18000	VNAV	240	FLY_BY	TF
JOSFF	WP	N27° 01' 35.32", W082° 27' 56.71"	15000	VNAV	240	FLY_BY	TF
JEVES	WP	N26° 54' 04.77", W082° 21' 58.91"	13000	VNAV	240	FLY_BY	TF
TYNEE	WP	N26° 47' 50.66", W082° 17' 02.65"	11000	VNAV	240	FLY_BY	TF
PASTR	WP	N26° 26' 24.99", W082° 00' 09.33"	4000	VNAV	240	FLY_BY	TF
LLMER	WP	N26° 23' 21.00", W081° 55' 16.00"	4000	VNAV	240	FLY_BY	TF
SPNKE	WP	N26° 24' 18.90", W081° 47' 50.77"	4000	VNAV	240	FLY_BY	TF
COOPR	WP	N26° 28' 06.11", W081° 42' 01.65"	4000	VNAV	240	FLY_OVER	TF

## DME DME Assessment Results for TYNEE3 path PLYER\_COOPR

Flyability	
Flight Type:	RNAV_STAR
Selected Airport:	KRSW [IFPA]
Climb Gradient:	None assigned
Speeds:	200 Ground Speed to 11000 FT
	240 Ground Speed to 18000 FT
	260 Ground Speed to 24000 FT
	340 Ground Speed above 24000 FT
Descent During a Turn:	Allowed
VNAV Mode:	Flight Plan

DME/DME	
RNP:	RNP 2
Flight Mode:	Manual
Line of Sight (DTED Level 0 Max):	Evaluated
Inertial Drift:	Enabled
Initial Drift:	0.558 NM
INS Drift Rate:	8.0 NM/Hour
Range Mode:	OSV
RNP Edges:	Evaluated
Min DME Range:	3.0 NM
DME Types:	DME, VOR-DME, VORTAC, TACAN
DME Include Angles:	30 to 150
Critical DMEs:	Not Allowed
DoD Facilities:	Not included
Foreign Facilities:	Not included
High DMEs:	Included
Low DMEs:	Included
Terminal DMEs:	Included
Flight Check DMEs:	Not selected
Higher Altitudes:	Not Evaluated
Near Maximum Altitude:	Not Evaluated
Automatic ESVs:	Not enabled
Disabled DMEs:	ZFP

**DME DME Assessment Results for TYNEE3 path PLYER\_COOPR**

<b>DME/DME (Continued)</b>										
<b>DMEs Used</b>										
#	Name	Lat/Lon	MAGVAR	Range	Type	Source	Critical	Status	Time	Distance
1	LAL	N27° 59' 10.31", W082° 00' 50.06"	1.0 E	130	H	IFPA	NO	Enabled	67.3 %	67.3 %
2	CYY	N26° 09' 12.34", W081° 46' 41.17"	3.0 W	25	T	IFPA	NO	Enabled	11.9 %	11.9 %
3	PHK	N26° 46' 57.87", W080° 41' 29.16"	0.0 E	130	H	IFPA	NO	Enabled	15.7 %	15.7 %
4	SRQ	N27° 24' 25.26", W082° 33' 49.18"	5.0 W	130	DH	IFPA	NO	Enabled	92.1 %	92.1 %
5	TRV	N27° 40' 42.33", W080° 29' 23.01"	7.0 W	130	H	IFPA	NO	Enabled	11.3 %	11.3 %
6	OMN	N29° 18' 11.70", W081° 06' 45.71"	0.0 E	130	H	IFPA	NO	Enabled	29.1 %	29.1 %
7	PIE	N27° 54' 27.95", W082° 41' 03.51"	5.0 W	130	H	IFPA	NO	Enabled	82.1 %	82.1 %
8	OCF	N29° 10' 38.92", W082° 13' 34.80"	0.0 E	40	L	IFPA	NO	Enabled	16.7 %	16.8 %
9	LBV	N26° 49' 41.47", W081° 23' 29.18"	1.0 E	40	L	IFPA	NO	Enabled	19.3 %	19.2 %
10	MLB	N28° 06' 19.12", W080° 38' 06.46"	7.0 W	130	DH	IFPA	NO	Enabled	44.2 %	44.2 %
11	RSW	N26° 31' 47.59", W081° 46' 32.77"	2.0 W	40	L	IFPA	NO	Enabled	29.7 %	29.7 %
12	ORL	N28° 32' 33.80", W081° 20' 06.05"	0.0 E	130	H	IFPA	NO	Enabled	29.1 %	29.1 %
13	ZFP	N26° 33' 19.25", W078° 41' 52.25"	3.0 W	130	H	IFPA	NO	Disabled		

<b>Flight Check DME Selection</b>						
Distance [NM]	Selected DMEs					Alternate
0.0	OCF	PIE	SRQ	OMN	LAL	
31.2	SRQ	ORL	PIE	LAL		
54.7	SRQ	ORL	LAL	PIE	MLB	
85.4	SRQ	LAL	PIE	MLB		
99.1	SRQ	PIE	LBV	LAL	MLB	OMN
106.6	LBV	SRQ	LAL	PIE	TRV	MLB
107.7	PIE	MLB	LAL	SRQ		
123.0	LAL	PHK	SRQ	PIE	MLB	
125.2	PIE	PHK	SRQ	MLB		
125.5	TRV	SRQ	PIE	MLB		
127.0	TRV	SRQ	PIE	RSW	MLB	
136.9	TRV	SRQ	PIE	RSW		
143.4	PIE	RSW				
150.0	PIE	RSW	SRQ			
152.7	RSW	SRQ				
159.2	PHK	SRQ	RSW			
163.9	RSW	SRQ	PHK	CYY		
168.0	RSW	CYY	PHK			
174.3	PHK	CYY	LBV	RSW		
176.0	PHK	CYY	SRQ	LBV	RSW	
182.3	SRQ	LBV	PHK	CYY		

<b>Inertial Drift Segments</b>			
#	Start Location	End Location	Length [NM]



# DME DME Assessment Results for TYNEE3 path PLYER\_COOPR

## Available DMEs by Waypoints

Waypoint Before	Waypoint After	DME List	Suggested DMEs
PLYER	EGAME	OMN, SRQ, OCF, LAL, PIE	
EGAME	OGGER	OMN, SRQ, OCF, LAL, ORL, PIE	
OGGER	FRZBE	LBV, OMN, MLB, SRQ, LAL, ORL, TRV, PIE	
FRZBE	JOSFF	LBV, OMN, MLB, PHK, SRQ, LAL, TRV, PIE	
JOSFF	JEVES	PHK, MLB, SRQ, LAL, RSW, TRV, PIE	
JEVES	TYNEE	MLB, SRQ, RSW, TRV, PIE	
TYNEE	PASTR	PHK, CYY, SRQ, RSW, TRV, PIE	
PASTR	LLMER	CYY, PHK, SRQ, RSW	
LLMER	SPNKE	LBV, CYY, PHK, SRQ, RSW	
SPNKE	COOPR	LBV, PHK, CYY, SRQ, RSW	

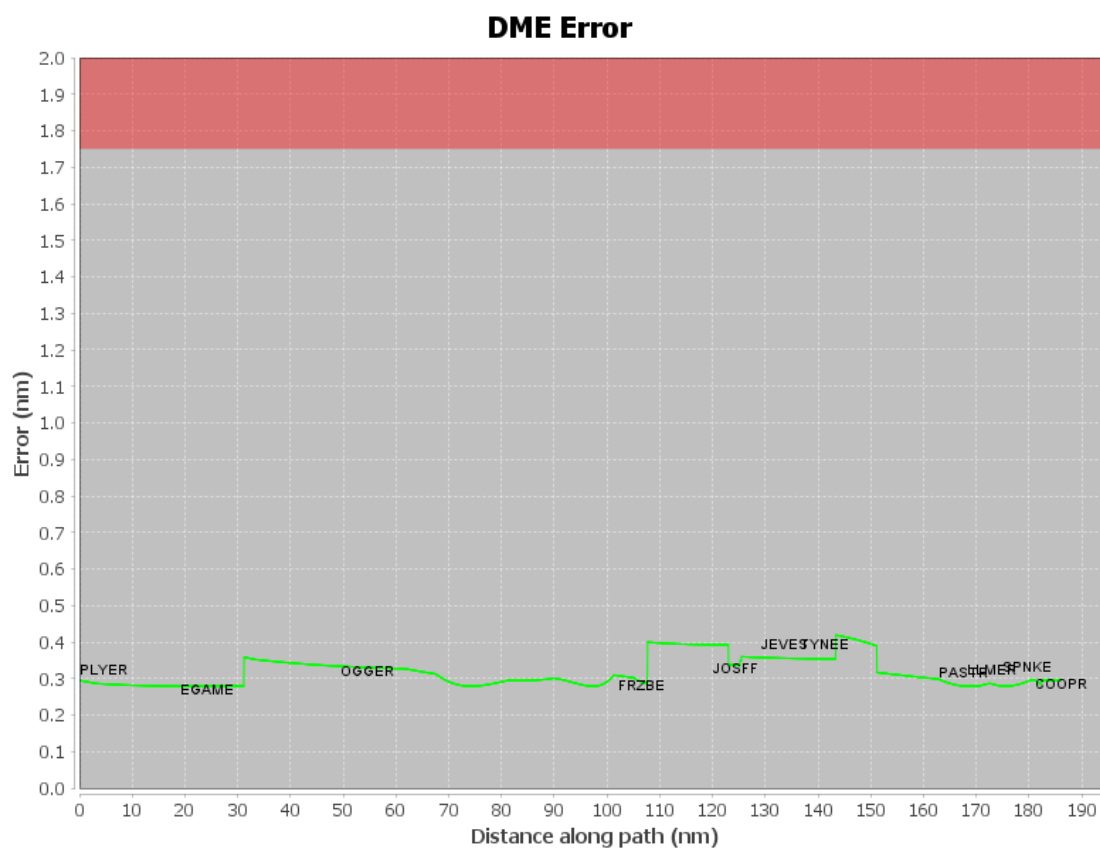
## User Data Files

#	File Name
None	

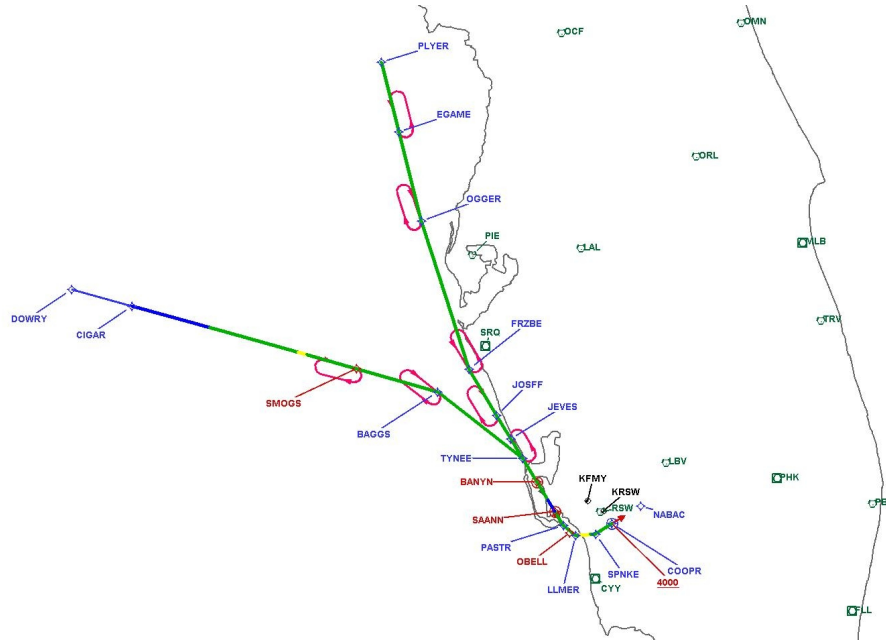
## User DMEs

#	Name	Lat/Lon	MAGVAR	Range	Elevation [ft]	Frequency	Replaces	Status
1	PHK FAA 900991-30 PHK [IFPA]	N26° 46' 57.87", W080° 41' 29.16"	0.0 E	130	15.5	115.4	PHK FAA 900991-30	
ESV:		Bearing [True]: 235.0° to 300.0° Bearing [Mag]: 235.0° to 300.0°				Arc Distance: Out to 80.0 NM Altitude: 4000.0 to 15000.0 ft		
2	TRV FAA 704266-49 TRV [IFPA]	N27° 40' 42.33", W080° 29' 23.01"	7.0 W	130	19.5	117.3	TRV FAA 704266-49	
ESV:		Bearing [True]: 238.0° to 260.0° Bearing [Mag]: 245.0° to 267.0°				Arc Distance: Out to 130.0 NM Altitude: 10000.0 to 20000.0 ft		
3	LBV FAA 755486-51 LBV [IFPA]	N26° 49' 41.47", W081° 23' 29.18"	1.0 E	40	30	110.4	LBV FAA 755486-51	
ESV:		Bearing [True]: 231.0° to 321.0° Bearing [Mag]: 230.0° to 320.0°				Arc Distance: Out to 130.0 NM Altitude: 15000.0 to 18000.0 ft		
4	ORL FAA 694096-38 ORL [IFPA]	N28° 32' 33.80", W081° 20' 06.05"	0.0 E	130	101.6	112.2	ORL FAA 694096-38	
ESV:		Bearing [True]: 242.0° to 256.0° Bearing [Mag]: 242.0° to 256.0°				Arc Distance: Out to 165.0 NM Altitude: 18000.0 to 35000.0 ft		
5	RSW FAA 191354-15 RSW [IFPA]	N26° 31' 47.59", W081° 46' 32.77"	2.0 W	40	24.8	114.15	RSW FAA 191354-15	
ESV:		Bearing [True]: 293.0° to 313.0° Bearing [Mag]: 295.0° to 315.0°				Arc Distance: Out to 130.0 NM Altitude: 12800.0 to 18000.0 ft		
6	SRQ FAA 070100-39 SRQ [IFPA]	N27° 24' 25.26", W082° 33' 49.18"	5.0 W	130	19	117.0	SRQ FAA 070100-39	
ESV:		Bearing [True]: 87.0° to 148.0° Bearing [Mag]: 92.0° to 153.0°				Arc Distance: Out to 77.0 NM Altitude: 4000.0 to 5000.0 ft		
7	RSW FAA 191354-60 RSW [IFPA]	N26° 31' 47.59", W081° 46' 32.77"	2.0 W	40	24.8	114.15	RSW FAA 191354-60	
ESV:		Bearing [True]: 288.0° to 303.0° Bearing [Mag]: 290.0° to 305.0°				Arc Distance: Out to 145.0 NM Altitude: 15000.0 to 18100.0 ft		
8	OCF FAA 714002-27 OCF [IFPA]	N29° 10' 38.92", W082° 13' 34.80"	0.0 E	40	78.3	113.7	OCF FAA 714002-27	
ESV:		Bearing [True]: 215.0° to 230.0° Bearing [Mag]: 215.0° to 230.0°				Arc Distance: Out to 145.0 NM Altitude: 13500.0 to 18100.0 ft		
9	OMN FAA 694106-43 OMN [IFPA]	N29° 18' 11.70", W081° 06' 45.71"	0.0 E	130	24	112.6	OMN FAA 694106-43	
ESV:		Bearing [True]: 150.0° to 355.0° Bearing [Mag]: 150.0° to 355.0°				Arc Distance: Out to 155.0 NM Altitude: 18000.0 to 33000.0 ft		
10	OCF FAA 714002-22 OCF [IFPA]	N29° 10' 38.92", W082° 13' 34.80"	0.0 E	40	78.3	113.7	OCF FAA 714002-22	
ESV:		Bearing [True]: 220.0° to 270.0° Bearing [Mag]: 220.0° to 270.0°				Arc Distance: Out to 70.0 NM Altitude: 12000.0 to 18000.0 ft		
11	PIE FAA 698212-41 PIE [IFPA]	N27° 54' 27.95", W082° 41' 03.51"	5.0 W	130	4.8	116.4	PIE FAA 698212-41	
ESV:		Bearing [True]: 95.0° to 245.0° Bearing [Mag]: 100.0° to 250.0°				Arc Distance: Out to 82.0 NM Altitude: 5000.0 to 16000.0 ft		

## DME DME Assessment Results for TYNEE3 path PLYER\_COOPR

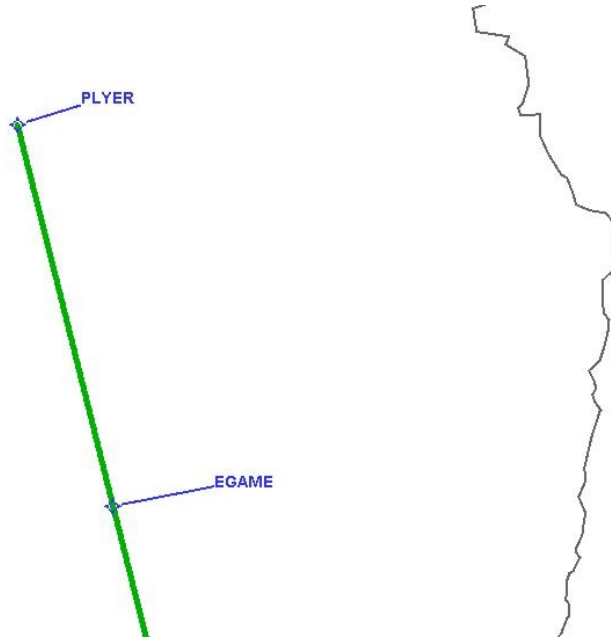


# DME DME Assessment Results for TYNEE3 path PLYER\_COOPR



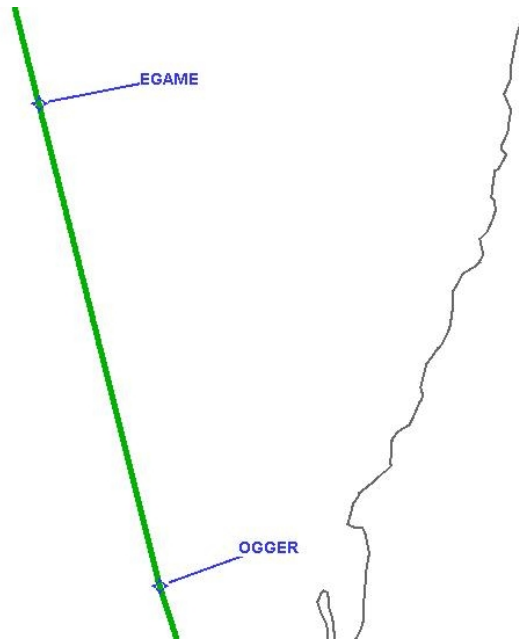
## DME DME Assessment Results for TYNEE3 path PLYER\_COOPR

Graphic Depiction 2



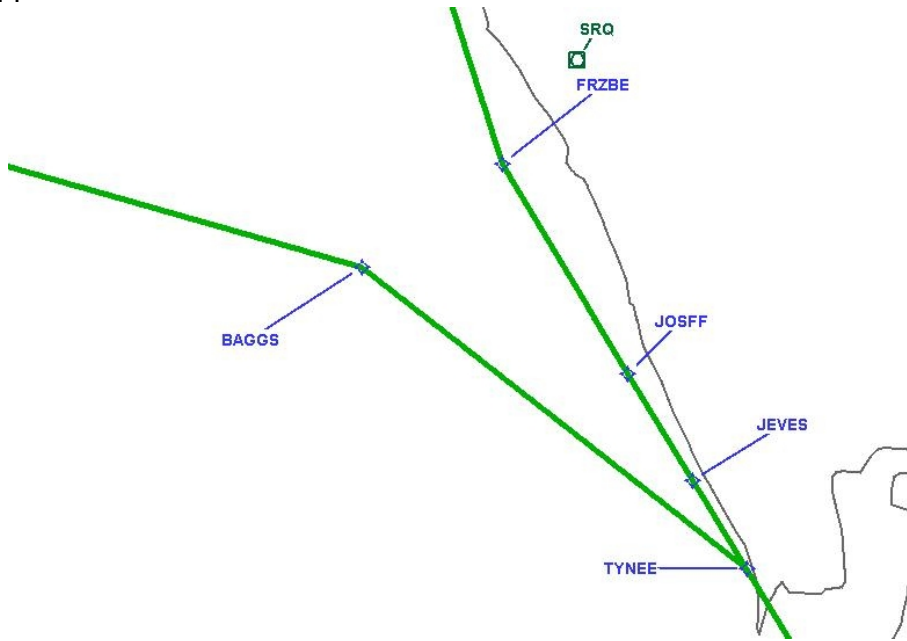
## DME DME Assessment Results for TYNEE3 path PLYER\_COOPR

Graphic Depiction 3



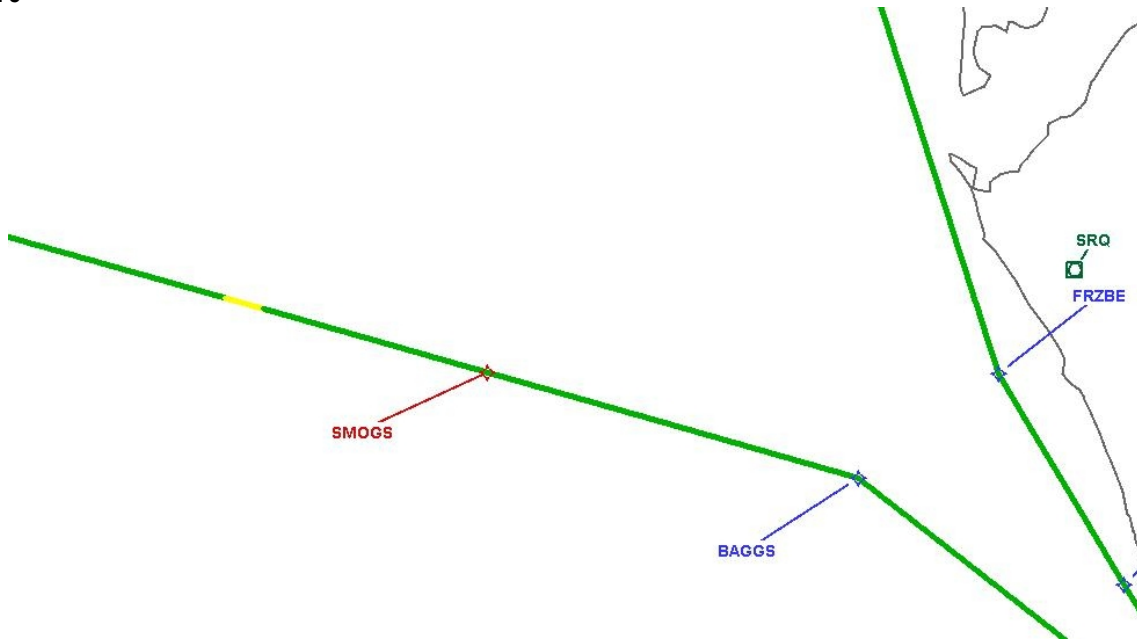
# DME DME Assessment Results for TYNEE3 path PLYER\_COOPR

Graphic Depiction 4



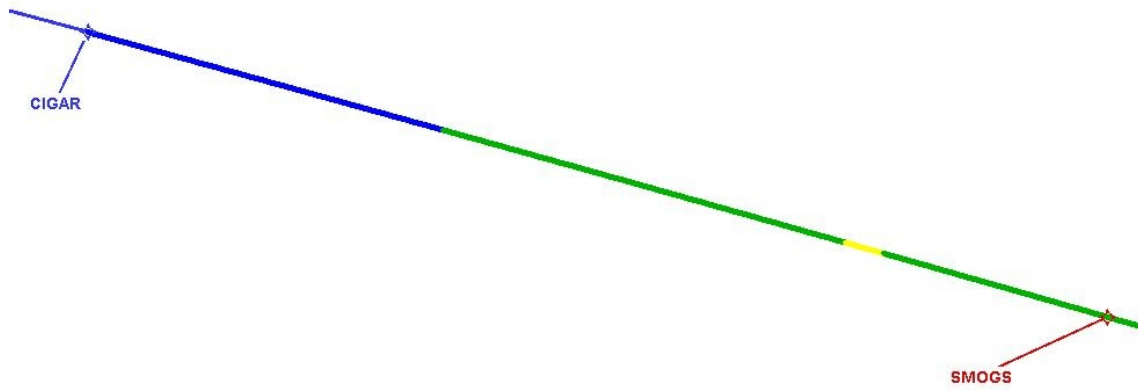
# DME DME Assessment Results for TYNEE3 path PLYER\_COOPR

Graphic Depiction 5



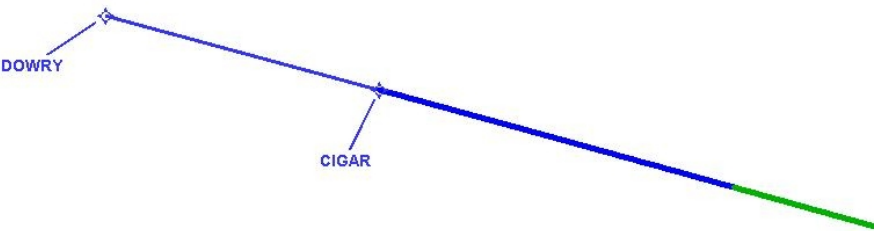
## DME DME Assessment Results for TYNEE3 path PLYER\_COOPR

Graphic Depiction 6



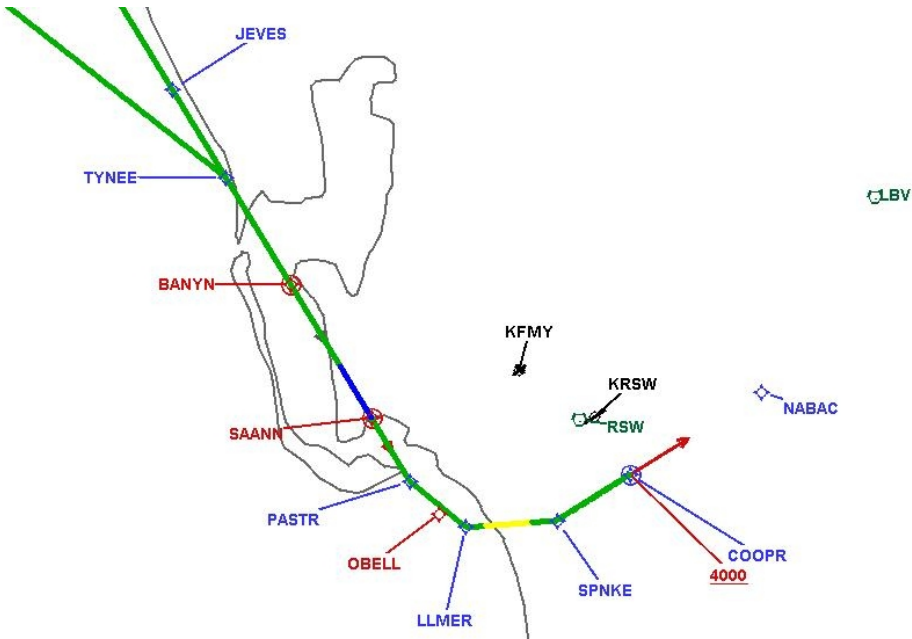


Graphic Depiction 7



Graphic Depiction 8

DME DME Assessment Results for TYNEE3 path PLYER\_COOPR



## DME DME Assessment Results for TYNEE3 path FRZBE\_PLYER

### Results Summary

Flyability:	Completed
DME/DME:	Completed - No Critical DMEs
Name:	Erik J-CTR John
Project File:	C:\Users\Erik J-CTR John\OneDrive - Federal Aviation Administration\Desktop\PROJECT FILES\ZJX_ZMA VOR MON\KRSW TYNEE3 STAR\KRSW TYNEE3 (RNAV) STAR DME 24 NOV 2023.tgs
Output File:	C:\Users\Erik J-CTR John\OneDrive - Federal Aviation Administration\Desktop\PROJECT FILES\ZJX_ZMA VOR MON\KRSW TYNEE3 STAR\FOR SUBMITTAL\KRSW [IFPA] TYNEE3 20231124_0714 EST\FRZBE_PLYER\KRSW TYNEE3 RNAV STAR FRZBE PLYER 20231124_0714 EST.pdf
Procedure Name:	TYNEE3
Software: DmeDmePlugin:	7.2.1
Date/Time:	11/24/2023 07:14 EST
Databases:	DTED 0 MAX

### Failures

No Failures

### Warnings

No Warnings

### Informational

No Informational

### Notes For Flight Check

DOWRY transition is GNSS only.

### Flight Plan

Name	Type	Lat/Lon	Altitude (ft)	VNAV Mode	Ground Speed (kts)	Turn Type	Leg Type
FRZBE	WP	N27° 16' 24.53", W082° 39' 28.03"	18000	VNAV	240	FLY_BY	TF
OGGER	WP	N28° 04' 43.19", W083° 01' 07.67"	18000	VNAV	240	FLY_BY	TF
EGAME	WP	N28° 33' 51.38", W083° 11' 45.28"	18000	VNAV	240	FLY_BY	TF
PLYER	WP	N28° 56' 51.36", W083° 20' 08.59"	18000	VNAV	240	FLY_BY	TF

### Flyability

Flight Type:	RNAV_STAR
Selected Airport:	KRSW [IFPA]
Climb Gradient:	None assigned
Speeds:	200 Ground Speed to 11000 FT
	240 Ground Speed to 18000 FT
	260 Ground Speed to 24000 FT
	340 Ground Speed above 24000 FT
Descent During a Turn:	Allowed
VNAV Mode:	Flight Plan

## DME DME Assessment Results for TYNEE3 path FRZBE\_PLYER

DME/DME	
RNP:	RNP 2
Flight Mode:	Manual
Line of Sight (DTED Level 0 Max):	Evaluated
Inertial Drift:	Enabled
Initial Drift:	0.558 NM
INS Drift Rate:	8.0 NM/Hour
Range Mode:	OSV
RNP Edges:	Evaluated
Min DME Range:	3.0 NM
DME Types:	DME, VOR-DME, VORTAC, TACAN
DME Include Angles:	30 to 150
Critical DMEs:	Not Allowed
DoD Facilities:	Not included
Foreign Facilities:	Not included
High DMEs:	Included
Low DMEs:	Included
Terminal DMEs:	Included
Flight Check DMEs:	Not selected
Higher Altitudes:	Not Evaluated
Near Maximum Altitude:	Not Evaluated
Automatic ESVs:	Not enabled
Disabled DMEs:	ZFP

DME/DME (Continued)										
DMEs Used										
#	Name	Lat/Lon	MAGVAR	Range	Type	Source	Critical	Status	Time	Distance
1	LAL	N27° 59' 10.31", W082° 00' 50.06"	1.0 E	130	H	IFPA	NO	Enabled	100 %	100 %
2	SRQ	N27° 24' 25.26", W082° 33' 49.18"	5.0 W	130	DH	IFPA	NO	Enabled	100 %	100 %
3	TRV	N27° 40' 42.33", W080° 29' 23.01"	7.0 W	130	H	IFPA	NO	Enabled	1.9 %	1.9 %
4	OMN	N29° 18' 11.70", W081° 06' 45.71"	0.0 E	130	H	IFPA	NO	Enabled	50.8 %	50.8 %
5	PIE	N27° 54' 27.95", W082° 41' 03.51"	5.0 W	130	H	IFPA	NO	Enabled	100 %	100 %
6	LBV	N26° 49' 41.47", W081° 23' 29.18"	1.0 E	40	L	IFPA	NO	Enabled	21.5 %	21.5 %
7	OCF	N29° 10' 38.92", W082° 13' 34.80"	0.0 E	40	L	IFPA	NO	Enabled	29.2 %	29.2 %
8	MLB	N28° 06' 19.12", W080° 38' 06.46"	7.0 W	130	DH	IFPA	NO	Enabled	48.7 %	48.7 %
9	ORL	N28° 32' 33.80", W081° 20' 06.05"	0.0 E	130	H	IFPA	NO	Enabled	50.8 %	50.8 %
10	ZFP	N26° 33' 19.25", W078° 41' 52.25"	3.0 W	130	H	IFPA	NO	Disabled		

Flight Check DME Selection						
Distance [NM]	Selected DMEs					Alternate
0.0	LBV	SRQ	LAL	PIE	TRV	MLB
2.1	LBV	LAL	SRQ	PIE	MLB	OMN
7.5	SRQ	PIE	MLB	LAL		
21.2	SRQ	LAL	PIE	ORL	MLB	
51.9	SRQ	ORL	LAL	PIE		
75.4	OCF	PIE	SRQ	LAL	OMN	

Inertial Drift Segments			
#	Start Location	End Location	Length [NM]

# DME DME Assessment Results for TYNEE3 path FRZBE\_PLYER

## Available DMEs by Waypoints

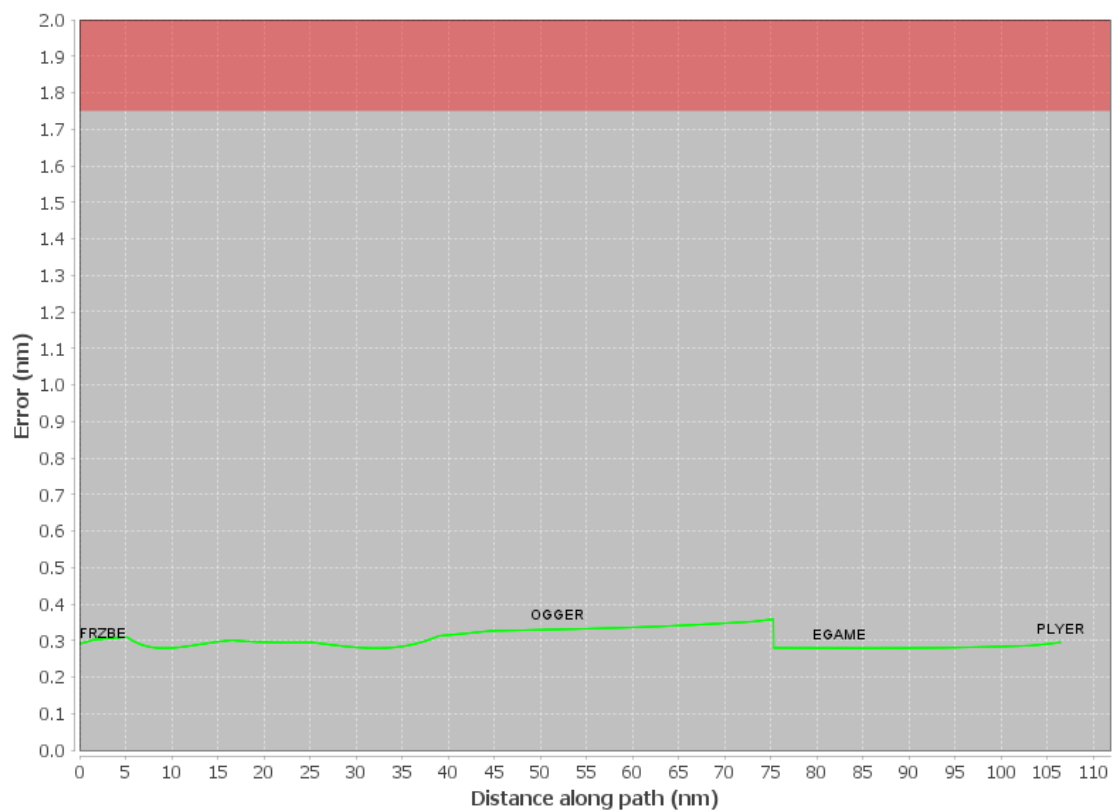
Waypoint Before	Waypoint After	DME List	Suggested DMEs
FRZBE	OGGER	LBV, OMN, MLB, SRQ, LAL, ORL, TRV, PIE	
OGGER	EGAME	OMN, SRQ, OCF, LAL, ORL, PIE	
EGAME	PLYER	OMN, SRQ, OCF, LAL, PIE	

## User Data Files

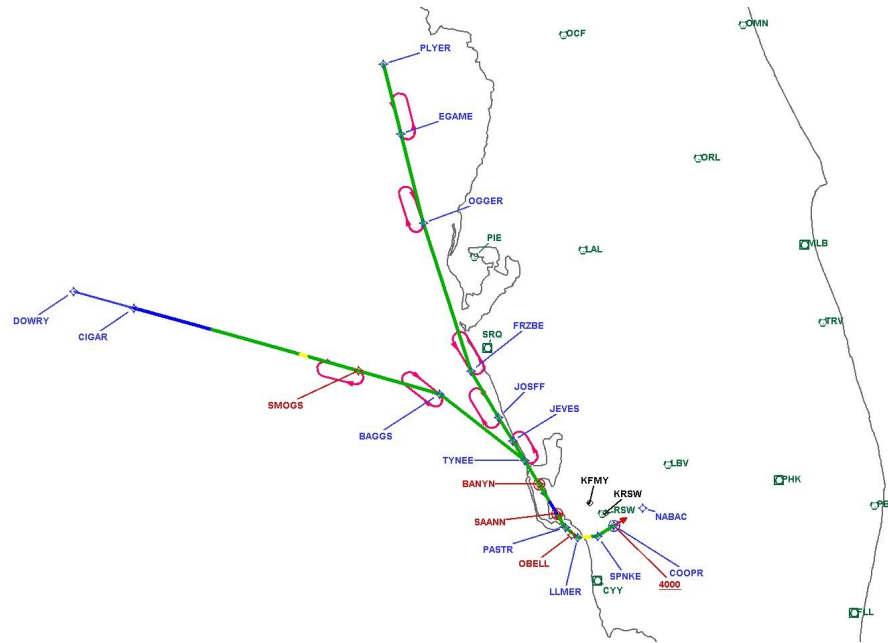
#	File Name							
None								
User DMEs								
#	Name	Lat/Lon	MAGVAR	Range	Elevation [ft]	Frequency	Replaces	Status
1	PHK FAA 900991-30 PHK [IFPA]	N26° 46' 57.87", W080° 41' 29.16"	0.0 E	130	15.5	115.4	PHK FAA 900991-30	
ESV:		Bearing [True]: 235.0° to 300.0° Bearing [Mag]: 235.0° to 300.0°				Arc Distance: Out to 80.0 NM Altitude: 4000.0 to 15000.0 ft		
2	TRV FAA 704266-49 TRV [IFPA]	N27° 40' 42.33", W080° 29' 23.01"	7.0 W	130	19.5	117.3	TRV FAA 704266-49	
ESV:		Bearing [True]: 238.0° to 260.0° Bearing [Mag]: 245.0° to 267.0°				Arc Distance: Out to 130.0 NM Altitude: 10000.0 to 20000.0 ft		
3	LBV FAA 755486-51 LBV [IFPA]	N26° 49' 41.47", W081° 23' 29.18"	1.0 E	40	30	110.4	LBV FAA 755486-51	
ESV:		Bearing [True]: 231.0° to 321.0° Bearing [Mag]: 230.0° to 320.0°				Arc Distance: Out to 130.0 NM Altitude: 15000.0 to 18000.0 ft		
4	ORL FAA 694096-38 ORL [IFPA]	N28° 32' 33.80", W081° 20' 06.05"	0.0 E	130	101.6	112.2	ORL FAA 694096-38	
ESV:		Bearing [True]: 242.0° to 256.0° Bearing [Mag]: 242.0° to 256.0°				Arc Distance: Out to 165.0 NM Altitude: 18000.0 to 35000.0 ft		
5	RSW FAA 191354-15 RSW [IFPA]	N26° 31' 47.59", W081° 46' 32.77"	2.0 W	40	24.8	114.15	RSW FAA 191354-15	
ESV:		Bearing [True]: 293.0° to 313.0° Bearing [Mag]: 295.0° to 315.0°				Arc Distance: Out to 130.0 NM Altitude: 12800.0 to 18000.0 ft		
6	SRQ FAA 070100-39 SRQ [IFPA]	N27° 24' 25.26", W082° 33' 49.18"	5.0 W	130	19	117.0	SRQ FAA 070100-39	
ESV:		Bearing [True]: 87.0° to 148.0° Bearing [Mag]: 92.0° to 153.0°				Arc Distance: Out to 77.0 NM Altitude: 4000.0 to 5000.0 ft		
7	RSW FAA 191354-60 RSW [IFPA]	N26° 31' 47.59", W081° 46' 32.77"	2.0 W	40	24.8	114.15	RSW FAA 191354-60	
ESV:		Bearing [True]: 288.0° to 303.0° Bearing [Mag]: 290.0° to 305.0°				Arc Distance: Out to 145.0 NM Altitude: 15000.0 to 18100.0 ft		
8	OCF FAA 714002-27 OCF [IFPA]	N29° 10' 38.92", W082° 13' 34.80"	0.0 E	40	78.3	113.7	OCF FAA 714002-27	
ESV:		Bearing [True]: 215.0° to 230.0° Bearing [Mag]: 215.0° to 230.0°				Arc Distance: Out to 145.0 NM Altitude: 13500.0 to 18100.0 ft		
9	OMN FAA 694106-43 OMN [IFPA]	N29° 18' 11.70", W081° 06' 45.71"	0.0 E	130	24	112.6	OMN FAA 694106-43	
ESV:		Bearing [True]: 150.0° to 355.0° Bearing [Mag]: 150.0° to 355.0°				Arc Distance: Out to 155.0 NM Altitude: 18000.0 to 33000.0 ft		
10	OCF FAA 714002-22 OCF [IFPA]	N29° 10' 38.92", W082° 13' 34.80"	0.0 E	40	78.3	113.7	OCF FAA 714002-22	
ESV:		Bearing [True]: 220.0° to 270.0° Bearing [Mag]: 220.0° to 270.0°				Arc Distance: Out to 70.0 NM Altitude: 12000.0 to 18000.0 ft		
11	PIE FAA 698212-41 PIE [IFPA]	N27° 54' 27.95", W082° 41' 03.51"	5.0 W	130	4.8	116.4	PIE FAA 698212-41	
ESV:		Bearing [True]: 95.0° to 245.0° Bearing [Mag]: 100.0° to 250.0°				Arc Distance: Out to 82.0 NM Altitude: 5000.0 to 16000.0 ft		

# DME DME Assessment Results for TYNEE3 path FRZBE\_PLYER

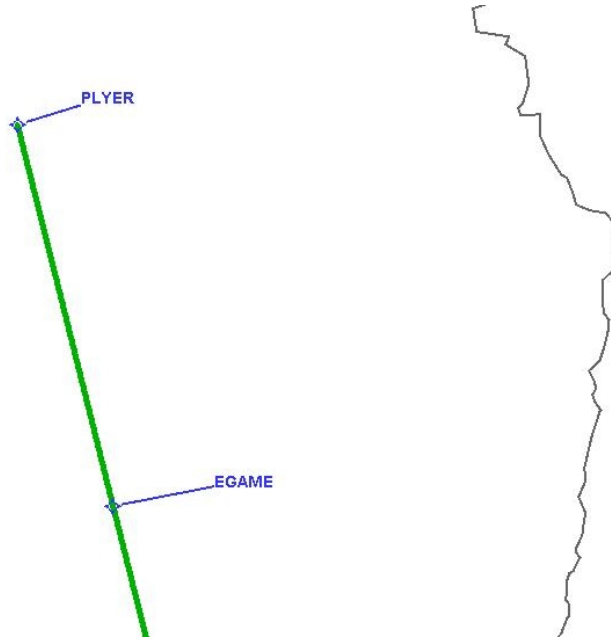
## DME Error



### Graphic Depiction 1



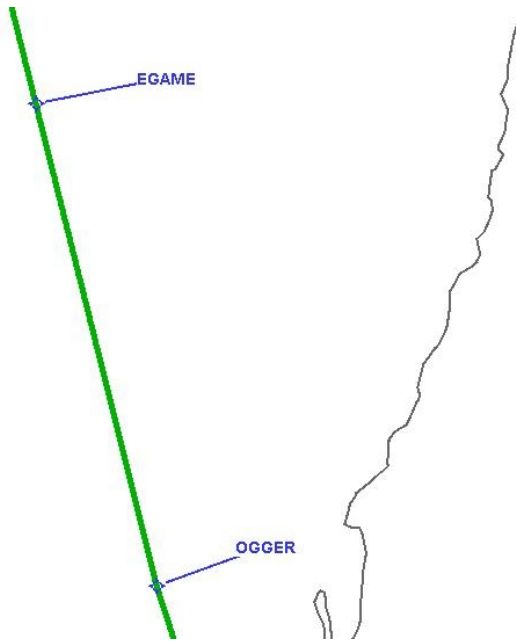
DME DME Assessment Results for TYNEE3 path FRZBE\_PLYER





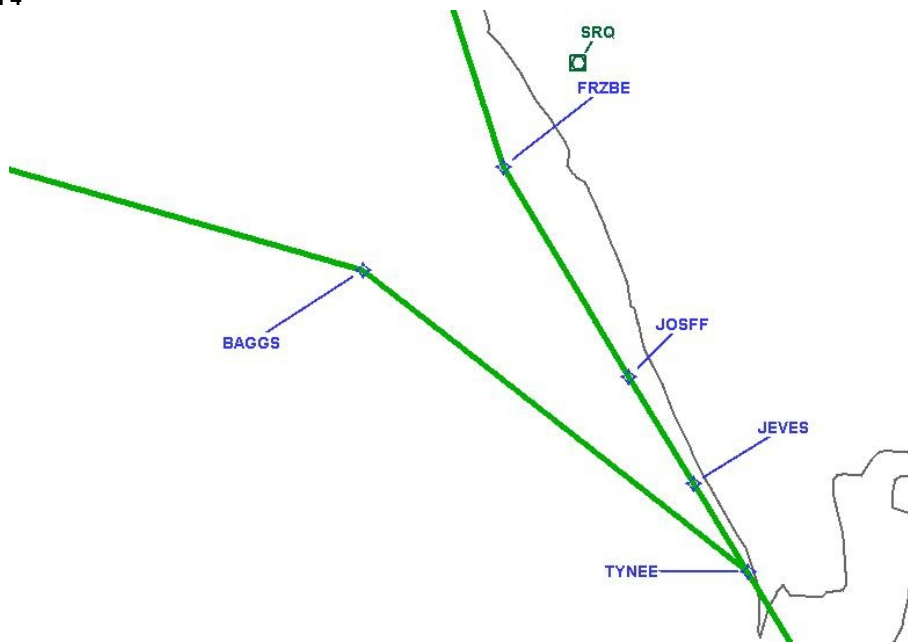
## DME DME Assessment Results for TYNEE3 path FRZBE\_PLYER

Graphic Depiction 3



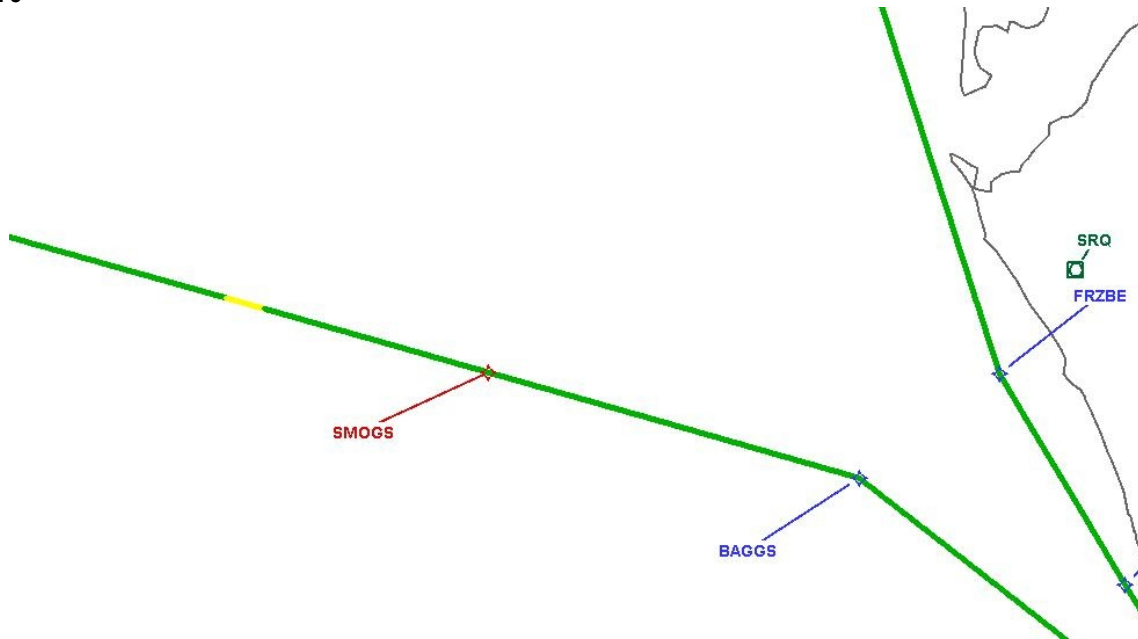
## DME DME Assessment Results for TYNEE3 path FRZBE\_PLYER

Graphic Depiction 4



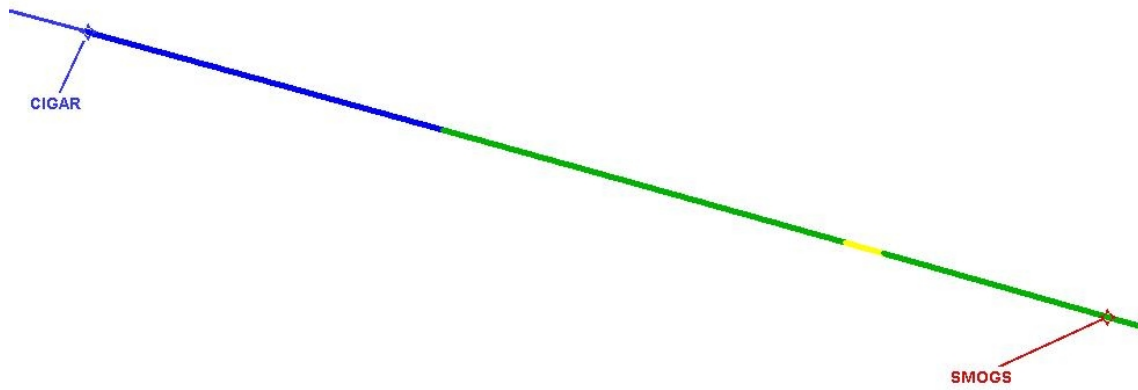
## DME DME Assessment Results for TYNEE3 path FRZBE\_PLYER

Graphic Depiction 5

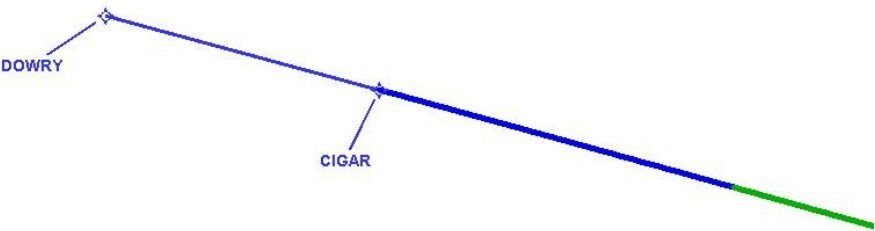


## DME DME Assessment Results for TYNEE3 path FRZBE\_PLYER

Graphic Depiction 6

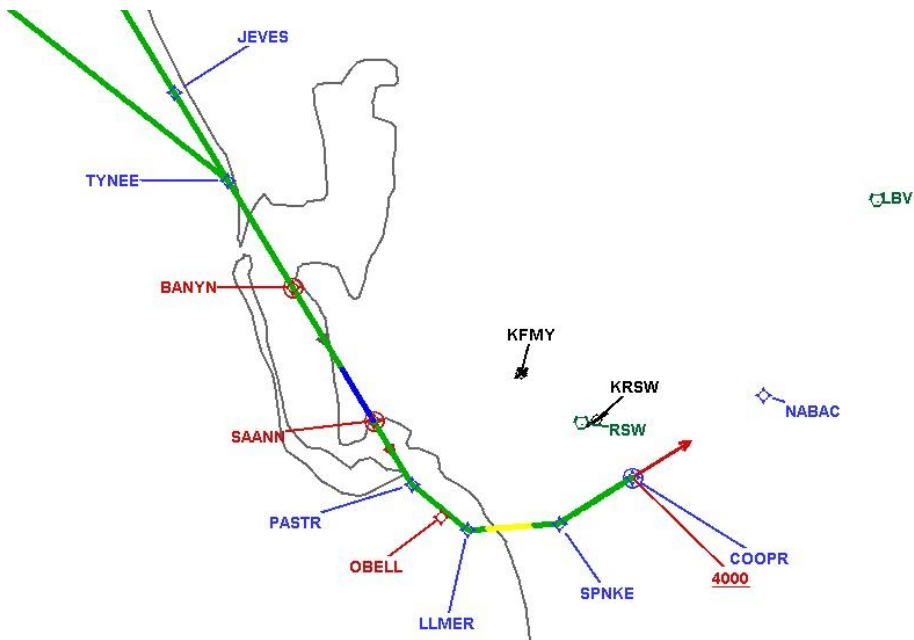


Graphic Depiction 7



Graphic Depiction 8

DME DME Assessment Results for TYNEE3 path FRZBE\_PLYER



## DME DME Assessment Results for TYNEE3 path TYNEE\_SAANN

### Results Summary

Flyability:	Completed
DME/DME:	Completed - No Critical DMEs
Name:	Erik J-CTR John
Project File:	C:\Users\Erik J-CTR John\OneDrive - Federal Aviation Administration\Desktop\PROJECT FILES\ZJX_ZMA VOR MON\KRSW TYNEE3 STAR\KRSW TYNEE3 (RNAV) STAR DME 24 NOV 2023.tgs
Output File:	C:\Users\Erik J-CTR John\OneDrive - Federal Aviation Administration\Desktop\PROJECT FILES\ZJX_ZMA VOR MON\KRSW TYNEE3 STAR\FOR SUBMITTAL\KRSW [IFPA] TYNEE3 20231124_0714 EST\TYNEE_SAANN\KRSW TYNEE3 RNAV STAR TYNEE SAANN 20231124_0714 EST.pdf
Procedure Name:	TYNEE3
Software: DmeDmePlugin:	7.2.1
Date/Time:	11/24/2023 07:14 EST
Databases:	DTED 0 MAX

### Failures

No Failures

### Warnings

No Warnings

### Informational

No Informational

### Notes For Flight Check

DOWRY transition is GNSS only.

### Flight Plan

Name	Type	Lat/Lon	Altitude (ft)	VNAV Mode	Ground Speed (kts)	Turn Type	Leg Type
TYNEE	WP	N26° 47' 50.66", W082° 17' 02.65"	11000	VNAV	240	FLY_BY	TF
SAANN	WP	N26° 30' 53.22", W082° 03' 40.00"	0	VNAV	240	FLY_OVER	TF

### Flyability

Flight Type:	RNAV_STAR
Selected Airport:	KRSW [IFPA]
Climb Gradient:	None assigned
Speeds:	200 Ground Speed to 11000 FT
	240 Ground Speed to 18000 FT
	260 Ground Speed to 24000 FT
	340 Ground Speed above 24000 FT
Descent During a Turn:	Allowed
VNAV Mode:	Flight Plan

## DME DME Assessment Results for TYNEE3 path TYNEE\_SAANN

DME/DME	
RNP:	RNP 2
Flight Mode:	Manual
Line of Sight (DTED Level 0 Max):	Evaluated
Inertial Drift:	Enabled
Initial Drift:	0.558 NM
INS Drift Rate:	8.0 NM/Hour
Range Mode:	OSV
RNP Edges:	Evaluated
Min DME Range:	3.0 NM
DME Types:	DME, VOR-DME, VORTAC, TACAN
DME Include Angles:	30 to 150
Critical DMEs:	Not Allowed
DoD Facilities:	Not included
Foreign Facilities:	Not included
High DMEs:	Included
Low DMEs:	Included
Terminal DMEs:	Included
Flight Check DMEs:	Not selected
Higher Altitudes:	Not Evaluated
Near Maximum Altitude:	Not Evaluated
Automatic ESVs:	Not enabled
Disabled DMEs:	ZFP

DME/DME (Continued)										
DMEs Used										
#	Name	Lat/Lon	MAGVAR	Range	Type	Source	Critical	Status	Time	Distance
1	SRQ	N27° 24' 25.26", W082° 33' 49.18"	5.0 W	130	DH	IFPA	NO	Enabled	45.7 %	45.7 %
2	TRV	N27° 40' 42.33", W080° 29' 23.01"	7.0 W	130	H	IFPA	NO	Enabled	9.6 %	9.6 %
3	PIE	N27° 54' 27.95", W082° 41' 03.51"	5.0 W	130	H	IFPA	NO	Enabled	54.7 %	54.7 %
4	RSW	N26° 31' 47.59", W081° 46' 32.77"	2.0 W	40	L	IFPA	NO	Enabled	77.8 %	77.8 %
5	ZFP	N26° 33' 19.25", W078° 41' 52.25"	3.0 W	130	H	IFPA	NO	Disabled		

Flight Check DME Selection						
Distance [NM]	Selected DMEs					Alternate
0.0	TRV	SRQ	PIE	RSW		
2.1	PIE	RSW				
8.7	PIE	RSW	SRQ			
11.4	RSW	SRQ				
16.2						

Inertial Drift Segments			
#	Start Location	End Location	Length [NM]
1	N26° 34' 35.79", W082° 06' 35.16"	N26° 30' 53.22", W082° 03' 40.00"	4.5316

Available DMEs by Waypoints			
Waypoint Before	Waypoint After	DME List	Suggested DMEs
TYNEE	SAANN	SRQ, RSW, TRV, PIE	



# DME DME Assessment Results for TYNEE3 path TYNEE\_SAANN

## User Data Files

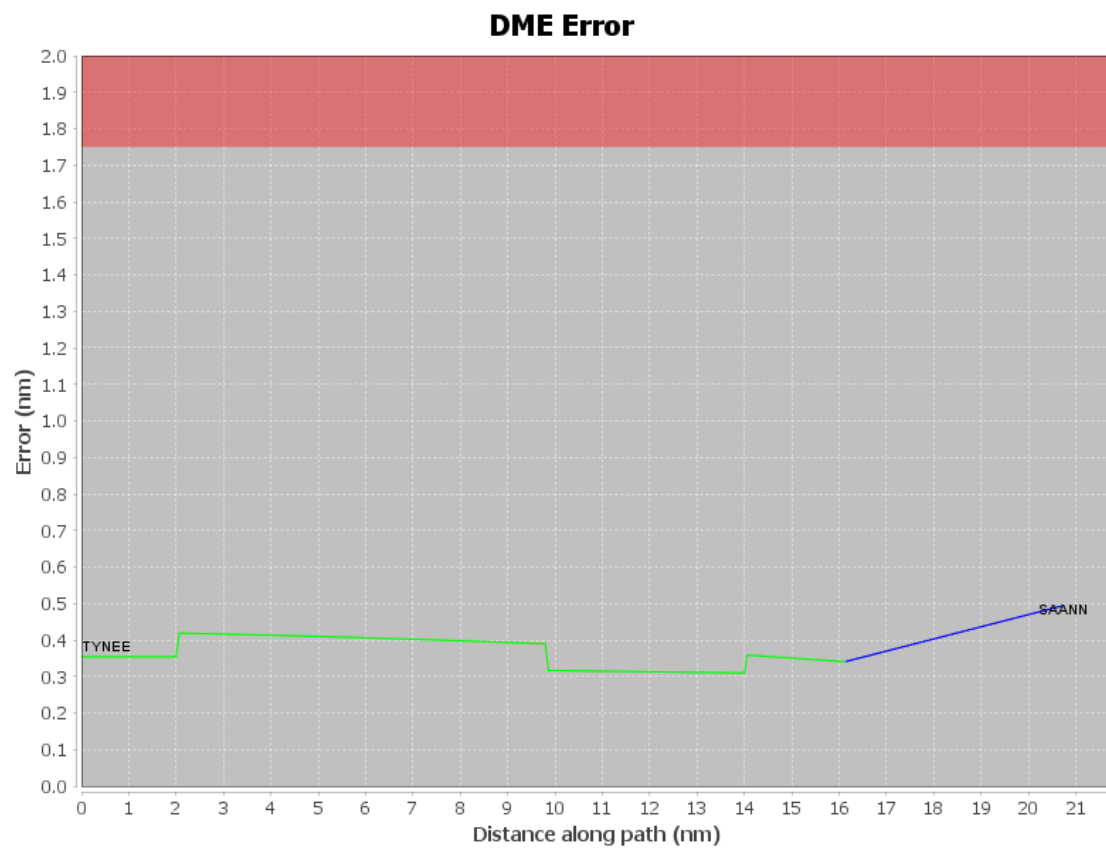
# File Name

None

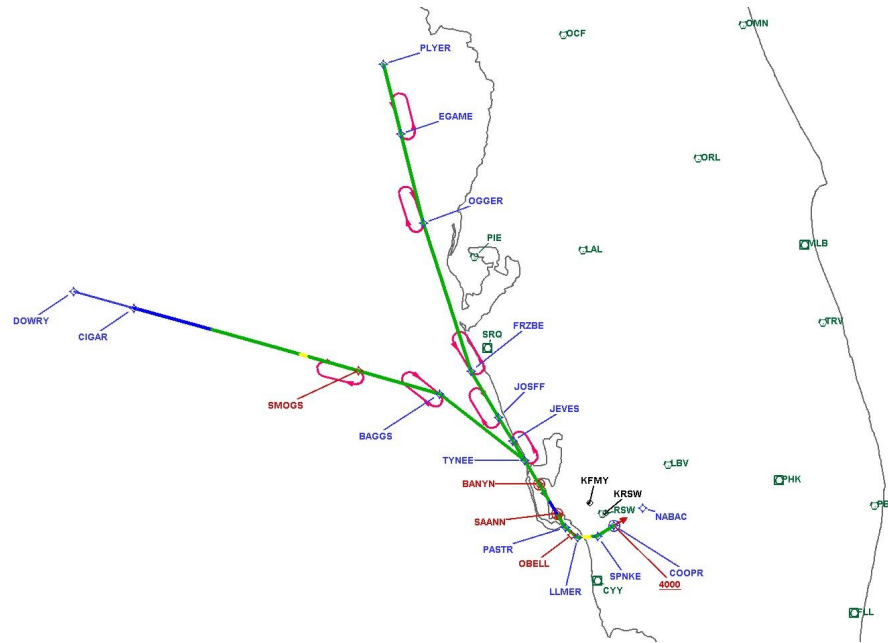
## User DMEs

#	Name	Lat/Lon	MAGVAR	Range	Elevation [ft]	Frequency	Replaces	Status
1	PHK FAA 900991-30 PHK [IFPA]	N26° 46' 57.87", W080° 41' 29.16"	0.0 E	130	15.5	115.4	PHK FAA 900991-30	
ESV:		Bearing [True]: 235.0° to 300.0° Bearing [Mag]: 235.0° to 300.0°				Arc Distance: Out to 80.0 NM Altitude: 4000.0 to 15000.0 ft		
2	TRV FAA 704266-49 TRV [IFPA]	N27° 40' 42.33", W080° 29' 23.01"	7.0 W	130	19.5	117.3	TRV FAA 704266-49	
ESV:		Bearing [True]: 238.0° to 260.0° Bearing [Mag]: 245.0° to 267.0°				Arc Distance: Out to 130.0 NM Altitude: 10000.0 to 20000.0 ft		
3	LBV FAA 755486-51 LBV [IFPA]	N26° 49' 41.47", W081° 23' 29.18"	1.0 E	40	30	110.4	LBV FAA 755486-51	
ESV:		Bearing [True]: 231.0° to 321.0° Bearing [Mag]: 230.0° to 320.0°				Arc Distance: Out to 130.0 NM Altitude: 15000.0 to 18000.0 ft		
4	ORL FAA 694096-38 ORL [IFPA]	N28° 32' 33.80", W081° 20' 06.05"	0.0 E	130	101.6	112.2	ORL FAA 694096-38	
ESV:		Bearing [True]: 242.0° to 256.0° Bearing [Mag]: 242.0° to 256.0°				Arc Distance: Out to 165.0 NM Altitude: 18000.0 to 35000.0 ft		
5	RSW FAA 191354-15 RSW [IFPA]	N26° 31' 47.59", W081° 46' 32.77"	2.0 W	40	24.8	114.15	RSW FAA 191354-15	
ESV:		Bearing [True]: 293.0° to 313.0° Bearing [Mag]: 295.0° to 315.0°				Arc Distance: Out to 130.0 NM Altitude: 12800.0 to 18000.0 ft		
6	SRQ FAA 070100-39 SRQ [IFPA]	N27° 24' 25.26", W082° 33' 49.18"	5.0 W	130	19	117.0	SRQ FAA 070100-39	
ESV:		Bearing [True]: 87.0° to 148.0° Bearing [Mag]: 92.0° to 153.0°				Arc Distance: Out to 77.0 NM Altitude: 4000.0 to 5000.0 ft		
7	RSW FAA 191354-60 RSW [IFPA]	N26° 31' 47.59", W081° 46' 32.77"	2.0 W	40	24.8	114.15	RSW FAA 191354-60	
ESV:		Bearing [True]: 288.0° to 303.0° Bearing [Mag]: 290.0° to 305.0°				Arc Distance: Out to 145.0 NM Altitude: 15000.0 to 18100.0 ft		
8	OCF FAA 714002-27 OCF [IFPA]	N29° 10' 38.92", W082° 13' 34.80"	0.0 E	40	78.3	113.7	OCF FAA 714002-27	
ESV:		Bearing [True]: 215.0° to 230.0° Bearing [Mag]: 215.0° to 230.0°				Arc Distance: Out to 145.0 NM Altitude: 13500.0 to 18100.0 ft		
9	OMN FAA 694106-43 OMN [IFPA]	N29° 18' 11.70", W081° 06' 45.71"	0.0 E	130	24	112.6	OMN FAA 694106-43	
ESV:		Bearing [True]: 150.0° to 355.0° Bearing [Mag]: 150.0° to 355.0°				Arc Distance: Out to 155.0 NM Altitude: 18000.0 to 33000.0 ft		
10	OCF FAA 714002-22 OCF [IFPA]	N29° 10' 38.92", W082° 13' 34.80"	0.0 E	40	78.3	113.7	OCF FAA 714002-22	
ESV:		Bearing [True]: 220.0° to 270.0° Bearing [Mag]: 220.0° to 270.0°				Arc Distance: Out to 70.0 NM Altitude: 12000.0 to 18000.0 ft		
11	PIE FAA 698212-41 PIE [IFPA]	N27° 54' 27.95", W082° 41' 03.51"	5.0 W	130	4.8	116.4	PIE FAA 698212-41	
ESV:		Bearing [True]: 95.0° to 245.0° Bearing [Mag]: 100.0° to 250.0°				Arc Distance: Out to 82.0 NM Altitude: 5000.0 to 16000.0 ft		

## DME DME Assessment Results for TYNEE3 path TYNEE\_SAANN

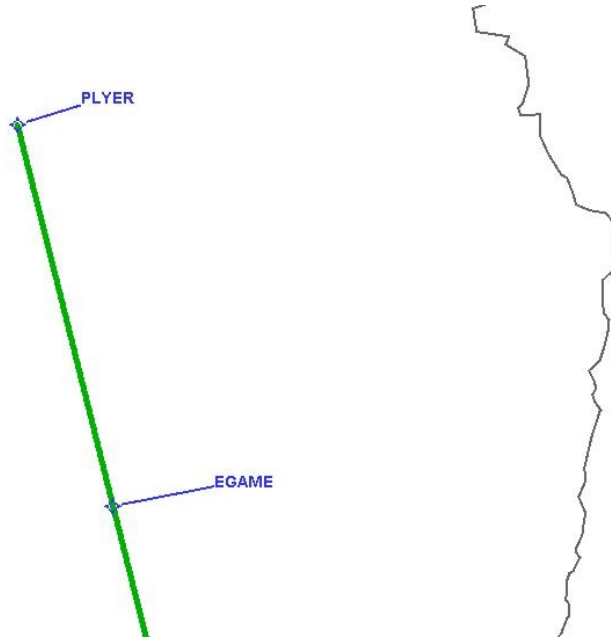


### Graphic Depiction 1



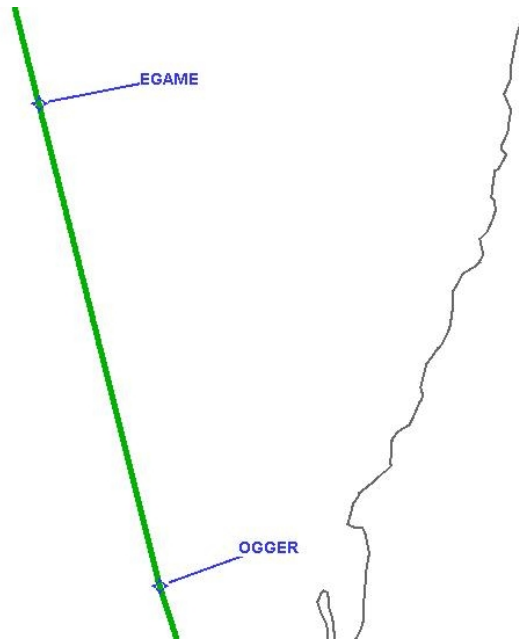
## DME DME Assessment Results for TYNEE3 path TYNEE\_SAANN

Graphic Depiction 2



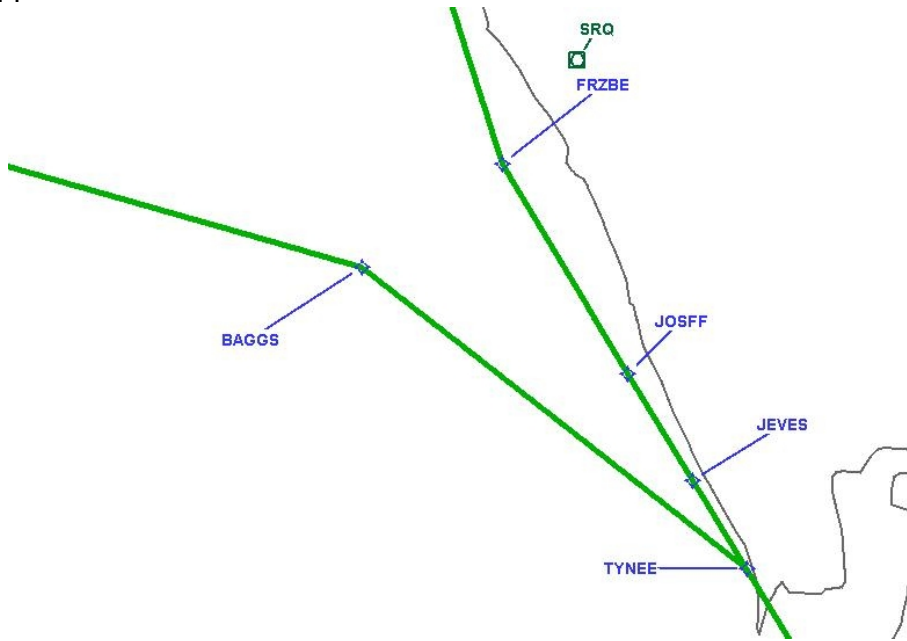
## DME DME Assessment Results for TYNEE3 path TYNEE\_SAANN

Graphic Depiction 3



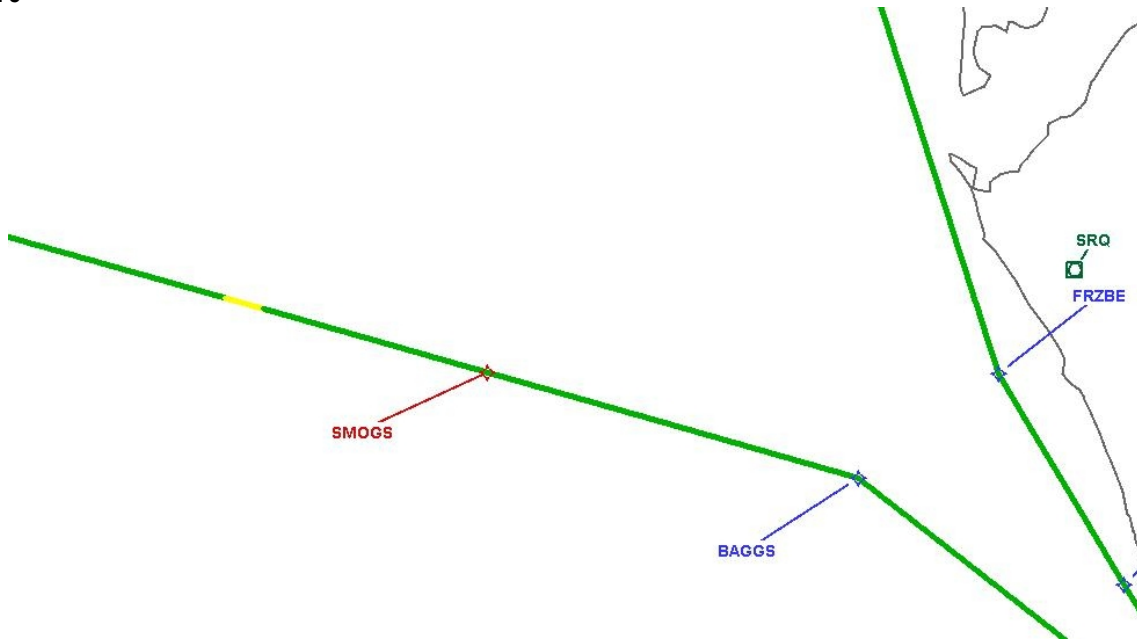
# DME DME Assessment Results for TYNEE3 path TYNEE\_SAANN

Graphic Depiction 4



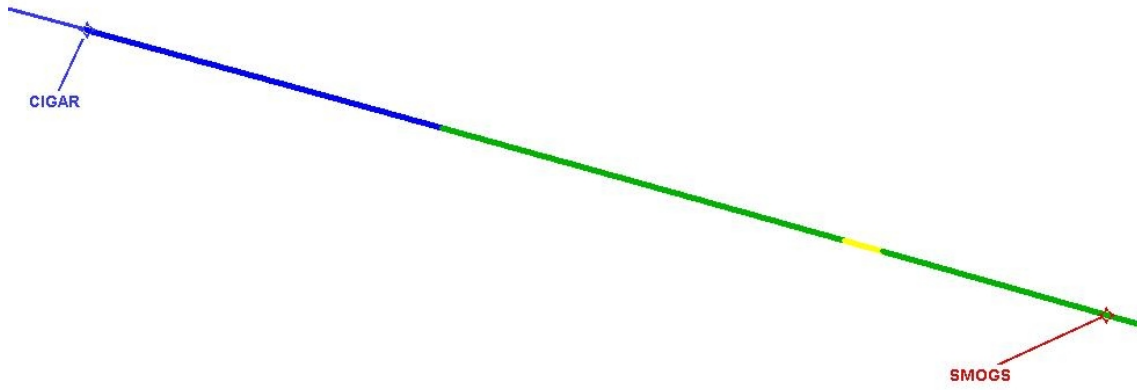
# DME DME Assessment Results for TYNEE3 path TYNEE\_SAANN

Graphic Depiction 5



## DME DME Assessment Results for TYNEE3 path TYNEE\_SAANN

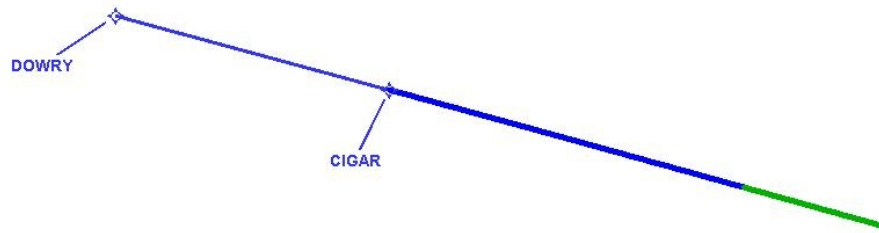
Graphic Depiction 6





## DME DME Assessment Results for TYNEE3 path TYNEE\_SAANN

Graphic Depiction 7



# DME DME Assessment Results for TYNEE3 path TYNEE\_SAANN

Graphic Depiction 8

