

FEDERAL AVIATION ADMINISTRATION
FLIGHT STANDARDS SERVICE
STANDARD TERMINAL ARRIVAL (STAR)

Bearings, headings, courses, tracks and radials are magnetic. Elevations and altitudes are in feet, MSL. Altitudes are minimum altitudes unless otherwise indicated.
Ceilings are in feet above airport elevation. Distances are in nautical miles. Visibilities are in statute miles or feet RVR unless otherwise indicated.

| Arrival Name | Number | STAR Computer Code | Superseded Number | Dated | Effective Date |
|--------------|--------|--------------------|-------------------|------------|----------------|
| TYNEE (RNAV) | THREE | TYNEE.TYNEE3 | TWO | 09/13/2018 | |

TRANSITION ROUTES:

| Transition Name | Transition Computer Codes | From FIX/NAVAID | To FIX/NAVAID | Course | Distance | MEA | MOCA | MAA | Crossing Altitudes / Fixes |
|-----------------|---------------------------|-----------------|---------------|--------|----------|-------|------|-----|----------------------------|
| DOWRY | DOWRY.TYNEE3 | DOWRY | DOWRY | | | | | | |
| | | | CIGAR | 105.08 | 20.74 | FL180 | 1500 | | |
| | | | SMOGS | 105.30 | 77.66 | FL180 | 1500 | | |
| | | | BAGGS | 105.78 | 28.35 | 15000 | 1500 | | |
| | | | TYNEE | 127.90 | 36.02 | 11000 | 1400 | | |
| FRZBE | FRZBE.TYNEE3 | FRZBE | FRZBE | | | | | | |
| | | | JOSFF | 149.14 | 18.00 | 15000 | 1400 | | |
| | | | JEVES | 148.54 | 09.19 | 13000 | 1400 | | |
| | | | TYNEE | 148.59 | 07.63 | 11000 | 1400 | | |
| | | | OGGER | | | | | | |
| OGGER | OGGER.TYNEE3 | OGGER | OGGER | | | | | | |
| | | | FRZBE | 162.16 | 51.87 | FL180 | 1400 | | |
| | | | JOSFF | 149.14 | 18.00 | 15000 | 1400 | | |
| | | | JEVES | 148.54 | 09.19 | 13000 | 1400 | | |
| | | | TYNEE | 148.59 | 07.63 | 11000 | 1400 | | |
| PLYER | PLYER.TYNEE3 | PLYER | PLYER | | | | | | |
| | | | EGAME | 166.15 | 24.10 | FL180 | 1400 | | |
| | | | OGGER | 166.07 | 30.54 | FL180 | 1400 | | |
| | | | FRZBE | 162.16 | 51.87 | FL180 | 1400 | | |
| | | | JOSFF | 149.14 | 18.00 | 15000 | 1400 | | |
| | | | JEVES | 148.54 | 09.19 | 13000 | 1400 | | |
| | | | TYNEE | 148.59 | 07.63 | 11000 | 1400 | | |
| | | | SMOGS | | | | | | |
| SMOGS | SMOGS.TYNEE3 | SMOGS | SMOGS | | | | | | |
| | | | BAGGS | 105.78 | 28.35 | 15000 | 1400 | | |
| | | | TYNEE | 127.90 | 36.02 | 11000 | 1400 | | |

ARRIVAL ROUTE DESCRIPTION:

LANDING KRSW RWY 6: FROM TYNEE ON TRACK 148.62/20.73 TO SAANN, THEN ON TRACK 148.62. EXPECT RADAR VECTORS TO FINAL APPROACH COURSE.

LANDING KRSW RWY 24: FROM TYNEE ON TRACK 148.62/26.18 TO PASTR, THEN ON TRACK 128.84/5.35 TO LLMER, THEN ON TRACK 085.76/6.73 TO SPNKE, THEN ON TRACK 058.11/6.44 TO CROSS COOPR AT OR ABOVE 4000, THEN ON TRACK 058.11. EXPECT RADAR VECTORS TO FINAL APPROACH COURSE.

LANDING KFMY: FROM TYNEE ON TRACK 148.65/9.24 TO BANYN, THEN ON TRACK 148.65. EXPECT RADAR VECTORS TO FINAL APPROACH COURSE.



FEDERAL AVIATION ADMINISTRATION
FLIGHT STANDARDS SERVICE
STANDARD TERMINAL ARRIVAL (STAR)

Bearings, headings, courses, tracks and radials are magnetic. Elevations and altitudes are in feet, MSL. Altitudes are minimum altitudes unless otherwise indicated.
Ceilings are in feet above airport elevation. Distances are in nautical miles. Visibilities are in statute miles or feet RVR unless otherwise indicated.

| Arrival Name | Number | STAR Computer Code | Superseded Number | Dated | Effective Date |
|--------------|--------|--------------------|-------------------|------------|----------------|
| TYNEE (RNAV) | THREE | TYNEE.TYNEE3 | TWO | 09/13/2018 | |

PBN REQUIREMENT NOTES:

RNAV 1 - DME/DME/IRU OR GPS
DOWRY TRANSITION - GPS ONLY.

EQUIPMENT REQUIREMENT NOTES:

RADAR REQUIRED

PROCEDURAL DATA NOTES:

NOTE: JET AND TURBOPROP AIRCRAFT ONLY
NOTE: DO NOT FILE FRZBE, OGGER, SMOGS TRANSITIONS - TO BE ASSIGNED BY ATC.

FIXES AND/OR HOLDING PATTERNS:

CHART HOLDING AT BAGGS: HOLD NW, RT, 127.90 INBOUND, 11 NM LEGS.
CHART HOLDING AT EGAME: HOLD N, LT, 166.07 INBOUND, 11 NM LEGS.
CHART HOLDING AT FRZBE: HOLD NW, LT, 149.14 INBOUND, 11 NM LEGS.
CHART HOLDING AT JOSFF: HOLD NW, RT, 148.54 INBOUND, 10 NM LEGS.
CHART HOLDING AT OGGER: HOLD N, RT, 162.16 INBOUND, 11 NM LEGS.
CHART HOLDING AT SMOGS: HOLD W, RT, 105.30 INBOUND, 11 NM LEGS.
CHART HOLDING AT TYNEE: HOLD NW, LT, 148.62 INBOUND, 7 NM LEGS.
CHART: OBELL, NABAC STAND-ALONE WAYPOINTS.

COMMUNICATIONS:

CHART FORT MYERS APP CONTROL

AIRPORTS SERVED:

| <u>AIRPORT ID</u> | <u>CITY</u> | <u>STATE</u> |
|-------------------|-------------|--------------|
| KRSW | FORT MYERS | FL |
| KFMY | FORT MYERS | FL |

LOST COMMUNICATIONS PREFERENCES:

KRSW LANDING RWY 6: AFTER SAANN, CONTINUE TO OBELL, THEN CONDUCT RWY 6 APPROACH.
KRSW LANDING RWY 24: AFTER COOPR, CONTINUE TO NABAC, THEN CONDUCT RWY 24 APPROACH.

REMARKS:

ASSUMED 295 FT SHIP HEIGHT FOR OBSTS OVER WATER.
MEA ALTITUDES ARE THE RESULT OF A COMBINATION OF FACTORS TO INCLUDE: LACK OF AVAILABLE NAVAIDS FOR DME/DME ANALYSIS OVER THE ATLANTIC; AVOID CRITICAL DME;
ENVIRONMENTAL IMPACT OF NOISE ANALYSIS.

FEDERAL AVIATION ADMINISTRATION
FLIGHT STANDARDS SERVICE
STANDARD TERMINAL ARRIVAL (STAR)

Bearings, headings, courses, tracks and radials are magnetic. Elevations and altitudes are in feet, MSL. Altitudes are minimum altitudes unless otherwise indicated.
Ceilings are in feet above airport elevation. Distances are in nautical miles. Visibilities are in statute miles or feet RVR unless otherwise indicated.

| Arrival Name | Number | STAR Computer Code | Superseded Number | Dated | Effective Date |
|--------------|--------|--------------------|-------------------|------------|----------------|
| TYNEE (RNAV) | THREE | TYNEE.TYNEE3 | TWO | 09/13/2018 | |

ADDITIONAL FLIGHT DATA:

DME/DME ASSESSMENT: SAT (RNP 2.0)
MAG VAR: KRSW 04W/2000
CHART AT COOPR TERMINUS: KRSW LDG RWY 24.
CHART AT SAANN TERMINUS: KRSW LDG RWY 06.
CHART AT BANYN TERMINUS: LDG KFMY.

FLIGHT INSPECTED BY:

ERIC L GEYER

ORGANIZATION:

FPO

DATE:

05/28/2024

Flight Inspected Signature:

Digitally signed by

CASIMIR L TABAKA

Jun 04, 2024

DEVELOPED BY:

CASIMIR TABAKA (SILVIA YOUNG)

AJV-A432

01/04/2024

Developed By Signature:

Digitally signed by

CASIMIR L TABAKA

Mar 21, 2024

APPROVED BY:

CASIMIR TABAKA

AJV-A432

Approved By Signature:

Digitally signed by

CASIMIR L TABAKA

Mar 21, 2024

CHANGES:

1. ADDED KFMY TRANSITION WITH NEW TERMINUS WAYPOINT BANYN.
2. AMENDED RWY 6 TRANSITION TO START AT TYNEE AND REMOVE PASTR AND LENPE WAYPOINT AND TERMINATE AT NEW WAYPOINT SAANN WITH FM LEG AND REMOVED WORDING "OR AS ASSIGNED BY ATC."
3. AMENDED RWY 24 TRANSITION TO START AT TYNEE AND TERMINATE AT COOPR WAYPOINT WITH TERMINUS ALTITUDE OF AT/ABOVE 4000.
4. AMENDED LOST COMM PROCEDURES FOR RWY 6 FROM "KRSW LANDING RWY 6: TRACK TO LENPE, INTERCEPT APPROACH" TO READ KRSW LANDING RWY 6: AFTER SAANN, CONTINUE TO OBELL, THEN CONDUCT RWY 6 APPROACH."
5. REMOVED ALL REFERENCES TO EXPECT ALTITUDES AT OGGER, TYNEE, LLMER, AND COOPR.
6. REMOVED CHART NOTE: KRSW LANDING RWY 6: EXPECT TO INTERCEPT APPROACH AT LENPE.
7. REMOVED ALL CHART NOTES REFERENCING CRITICAL DMEs FOR FRZBE, CODGR, AND BAGGS TRANSITIONS.
8. REMOVED OR AS ASSIGNED BY ATC AFTER COOPR ON RWY 24 TRANSITION .
9. ADDED BAGGS HOLDING PATTERN - HOLD NW, RT, 127.90 INBOUND, 11 NM LEGS.
10. AMENDED BAGGS EN ROUTE TRANSITION TO START AT NEW WAYPOINT SMOGS WITH NEW HOLDING PATTERN - HOLD W, RT, 105.30 INBOUND, 11 NM LEGS AT SMOGS.
11. DELETED CODGR EN ROUTE TRANSITION AND HOLDING PATTERN FROM STAR.
12. ADDED DOWRY EN ROUTE TRANSITION FROM NEW WAYPOINT DOWRY TO CIGAR TO SMOGS TO BAGGS TO TYNEE.
13. ADDED CHART NOTE: DO NOT FILE SMOGS TRANSITION - TO BE ASSIGNED BY ATC.
14. ADDED NEW STAND-ALONE WAYPOINT OBELL.
15. CHANGED CHART NOTE FROM "NOTE: TURBOJET AND TURBOPROP AIRCRAFT ONLY" TO READ "NOTE: JET AND TURBOPROP AIRCRAFT ONLY."
16. AMENDED RWY 24 LOST COMM PROCEDURES FROM "KRSW LANDING RWY 24: TRACK TO COOPR, THEN PROCEED DIRECT NABAC, TURN LEFT TO INTERCEPT RWY 24 APPROACH" TO READ "KRSW LANDING RWY 24: AFTER COOPR, CONTINUE TO NABAC, THEN CONDUCT RWY 24 APPROACH."
17. ADDED NOTE: DOWRY TRANSITION - GPS ONLY.
18. ADDED OGGER TRANSITION AND IS ATC ASSIGNED ONLY.
19. REMOVED FIX HODAR.

FEDERAL AVIATION ADMINISTRATION
FLIGHT STANDARDS SERVICE
STANDARD TERMINAL ARRIVAL (STAR)

Bearings, headings, courses, tracks and radials are magnetic. Elevations and altitudes are in feet, MSL. Altitudes are minimum altitudes unless otherwise indicated.
Ceilings are in feet above airport elevation. Distances are in nautical miles. Visibilities are in statute miles or feet RVR unless otherwise indicated.

| Arrival Name | Number | STAR Computer Code | Superseded Number | Dated | Effective Date |
|--------------|--------|--------------------|-------------------|------------|----------------|
| TYNEE (RNAV) | THREE | TYNEE.TYNEE3 | TWO | 09/13/2018 | |

20. UPDATED AND PUBLISHED MOCA DATA.
21. REMOVED MEA VALUES FROM ARRIVAL DESCRIPTION.
22. REMOVED AIRPORT NAMES FROM AIRPORTS SERVED.
23. ADDED TERMINUS INFO TO ADDITIONAL FLIGHT DATA.
24. ADDED "ASSUMED 295 FT SHIP HEIGHT FOR OBSTS OVER WATER".
25. ADDED "MEA ALTITUDES ARE THE RESULT OF A COMBINATION OF FACTORS TO INCLUDE: LACK OF AVAILABLE NAVAIDS FOR DME/DME ANALYSIS OVER THE ATLANTIC; AVOID CRITICAL DME; ENVIRONMENTAL IMPACT OF NOISE ANALYSIS."

REASONS:

1. PER DESIGN CRITERIA, PREVIOUS TRANSITION HAD CONFLICTING TURN TYPES AT TYNEE.
- 2-4. PER ATC REQUEST.
5. PER 8260.19I, PARA 4-5-2E.
6. NEEDED FOR REMOVAL OF LENPE FROM PROCEDURE AND RWY 6 APPROACH.
7. SUITABLE DME/DME RESOLUTION EXISTS AND ELIMINATES CRITICAL NAVAIDS.
8. PER CURRENT CHARTING CRITERIA
- 9-11. PER ATC REQUEST FOR MORE EFFICIENT FLOW OF TRAFFIC.
12. PER ATC REQUEST, DME/DME RESOLUTION IS NOT SUITABLE WEST OF SMOGS.
13. PER ATC REQUEST.
14. FACILITATE LOST COMM PROCEDURES FOR RWY 6.
15. IAW 8260.19I, PARA 4-5-2(F).
16. PER ATC REQUEST.
17. INSUFFICIENT DME/DME COVERAGE EXISTS FROM DOWRY TO SMOGS.
- 18-19. PER ATC REQUEST.
20. IAW 8260.19I, PARA 4-5-12b(8).
21. IAW 8260.19I, PARA 4-5-12.
22. PER CURRENT CRITERIA STANDARDS.
23. IAW 8260.19I, PARA 4-5-2H(2).
24. PER IFP CHECKLIST.
25. REMARKS AS PER 8260.3E, 2-2-7D(4) REQUIREMENTS.

05/22/2024: THIS IS AN UPDATED COPY OF THE FORM DEVELOPED ON 01/04/2024.

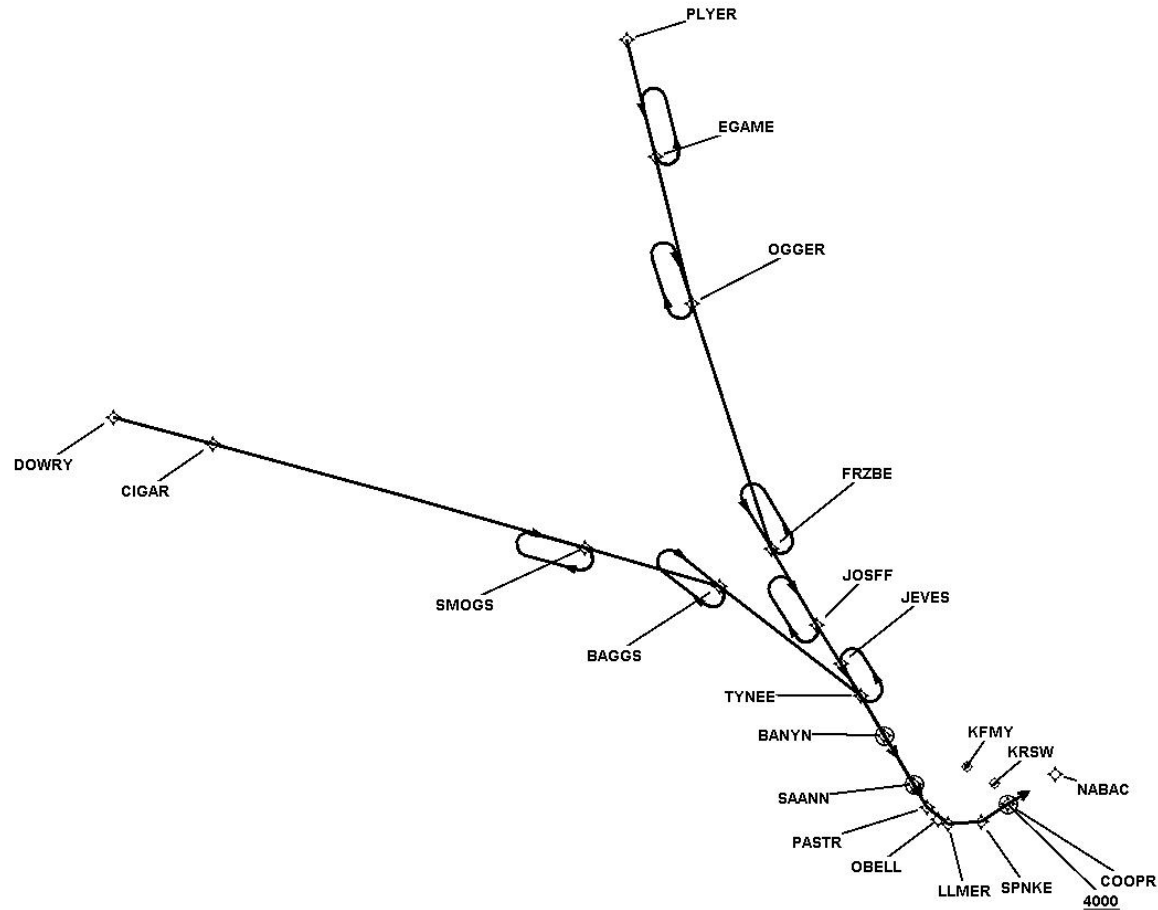
1. DOWRY TRANSITION: CHANGED CIGAR, SMOGS AND BAGGS MOCAS FROM 1400 TO 1500.



FEDERAL AVIATION ADMINISTRATION
FLIGHT STANDARDS SERVICE
STANDARD TERMINAL ARRIVAL (STAR)

Bearings, headings, courses, tracks and radials are magnetic. Elevations and altitudes are in feet, MSL. Altitudes are minimum altitudes unless otherwise indicated.
Ceilings are in feet above airport elevation. Distances are in nautical miles. Visibilities are in statute miles or feet RVR unless otherwise indicated.

| Arrival Name | Number | STAR Computer Code | Superseded Number | Dated | Effective Date |
|---------------------|--------|--------------------|-------------------|------------|----------------|
| TYNEE (RNAV) | THREE | TYNEE.TYNEE3 | TWO | 09/13/2018 | |
| Graphic Depiction 1 | | | | | |

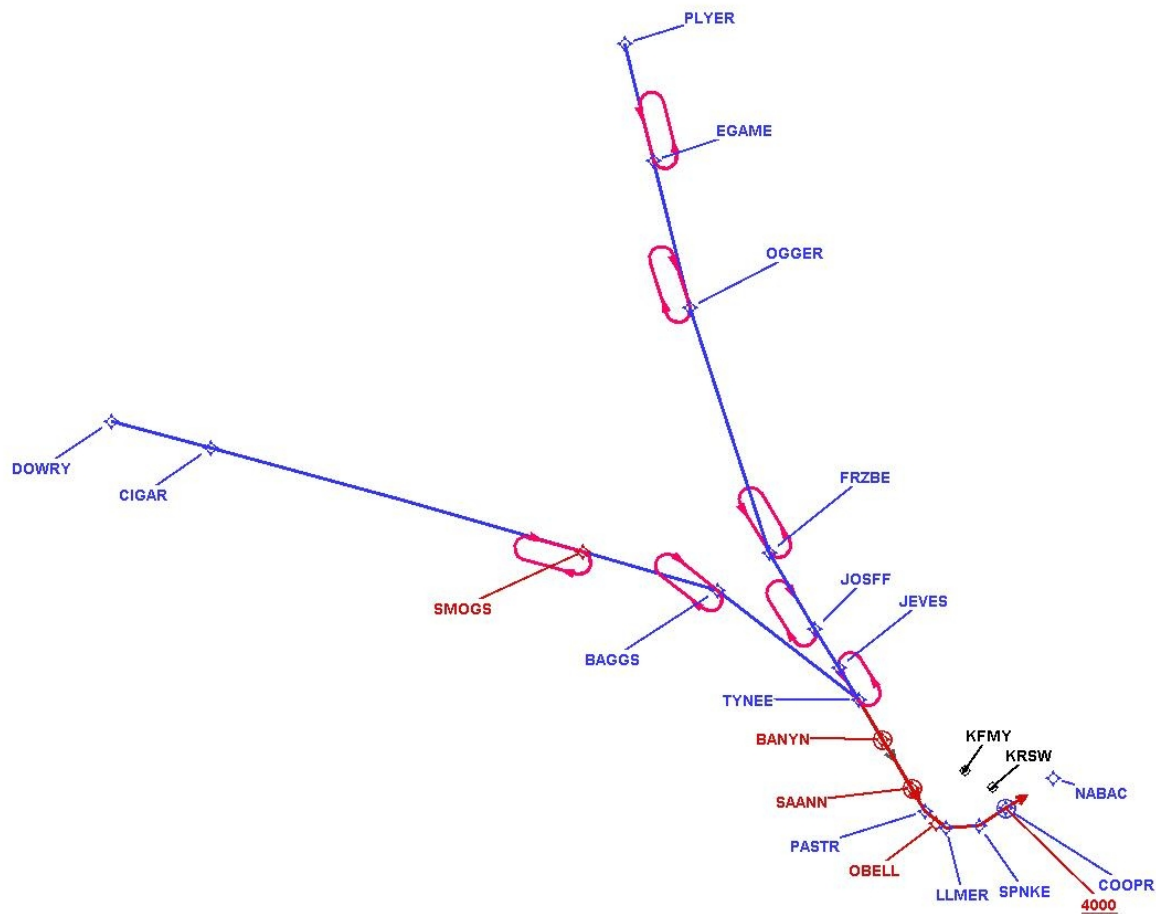


FEDERAL AVIATION ADMINISTRATION
FLIGHT STANDARDS SERVICE
STANDARD TERMINAL ARRIVAL (STAR)

Bearings, headings, courses, tracks and radials are magnetic. Elevations and altitudes are in feet, MSL. Altitudes are minimum altitudes unless otherwise indicated. Ceilings are in feet above airport elevation. Distances are in nautical miles. Visibilities are in statute miles or feet RVR unless otherwise indicated.

| Arrival Name | Number | STAR Computer Code | Superseded Number | Dated | Effective Date |
|---------------------|--------------|---------------------|-------------------|-------------------|----------------|
| TYNEE (RNAV) | THREE | TYNEE.TYNEE3 | TWO | 09/13/2018 | |

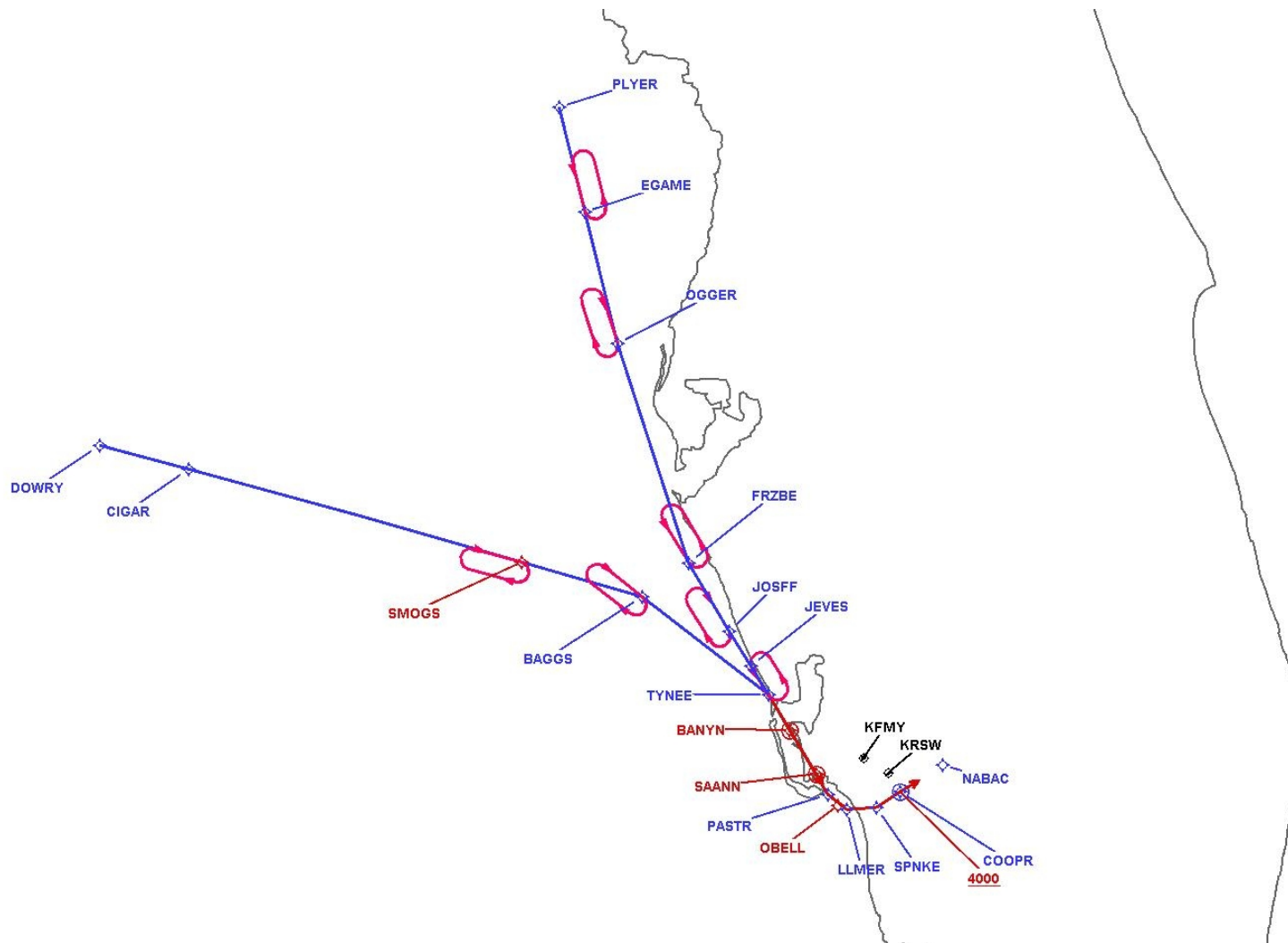
Graphic Depiction 2



FEDERAL AVIATION ADMINISTRATION
FLIGHT STANDARDS SERVICE
STANDARD TERMINAL ARRIVAL (STAR)

Bearings, headings, courses, tracks and radials are magnetic. Elevations and altitudes are in feet, MSL. Altitudes are minimum altitudes unless otherwise indicated.
Ceilings are in feet above airport elevation. Distances are in nautical miles. Visibilities are in statute miles or feet RVR unless otherwise indicated.

| Arrival Name | Number | STAR Computer Code | Superseded Number | Dated | Effective Date |
|---------------------|--------|--------------------|-------------------|------------|----------------|
| TYNEE (RNAV) | THREE | TYNEE.TYNEE3 | TWO | 09/13/2018 | |
| Graphic Depiction 3 | | | | | |



FEDERAL AVIATION ADMINISTRATION
FLIGHT STANDARDS SERVICE
STAR (DATA RECORD)

| Arrival Name TYNEE (RNAV) | Number THREE | | STAR Computer Code TYNEE.TYNEE3 | | Superseded Number TWO | | Dated 09/13/2018 | | Effective Date |
|------------------------------|--------------------------|----------|------------------------------------|---------------------|--------------------------|----------------------|---------------------|--------------|----------------|
| <u>FIX/NAVAID</u> | <u>LAT/LONG</u> | <u>C</u> | <u>FO/FB</u> | <u>LEG TYPE</u> | <u>TC</u> | <u>DIST (NM)</u> | <u>ALTITUDE</u> | <u>SPEED</u> | <u>REMARKS</u> |
| En Route Transition | | | | | | | | | |
| DOWRY | 273338.19N / 0850952.66W | Y | | IF | | | | | DOWRY.TYNEE3 |
| CIGAR | 272936.61N / 0844659.51W | Y | FB | TF | 101.08 | 20.74 | | | |
| SMOGS | 271354.93N / 0832133.48W | Y | FB | TF | 101.30 | 77.66 | | | |
| BAGGS | 270803.28N / 0825027.20W | Y | FB | TF | 101.78 | 28.35 | | | |
| TYNEE | 264750.66N / 0821702.65W | Y | FB | TF | 123.90 | 36.02 | | | |
| En Route Transition | | | | | | | | | |
| FRZBE | 271624.53N / 0823928.03W | Y | | IF | | | | | FRZBE.TYNEE3 |
| JOSFF | 270135.32N / 0822756.71W | Y | FB | TF | 145.14 | 18.00 | | | |
| JEVES | 265404.77N / 0822158.91W | Y | FB | TF | 144.54 | 09.19 | | | |
| TYNEE | 264750.66N / 0821702.65W | Y | FB | TF | 144.59 | 07.63 | | | |
| En Route Transition | | | | | | | | | |
| OGGER | 280443.19N / 0830107.67W | Y | | IF | | | | | OGGER.TYNEE3 |
| FRZBE | 271624.53N / 0823928.03W | Y | FB | TF | 158.16 | 51.87 | | | |
| JOSFF | 270135.32N / 0822756.71W | Y | FB | TF | 145.14 | 18.00 | | | |
| JEVES | 265404.77N / 0822158.91W | Y | FB | TF | 144.54 | 09.19 | | | |
| TYNEE | 264750.66N / 0821702.65W | Y | FB | TF | 144.59 | 07.63 | | | |
| En Route Transition | | | | | | | | | |
| PLYER | 285651.36N / 0832008.59W | Y | | IF | | | | | PLYER.TYNEE3 |
| EGAME | 283351.38N / 0831145.28W | Y | FB | TF | 162.15 | 24.10 | | | |
| OGGER | 280443.19N / 0830107.67W | Y | FB | TF | 162.07 | 30.54 | | | |
| FRZBE | 271624.53N / 0823928.03W | Y | FB | TF | 158.16 | 51.87 | | | |
| JOSFF | 270135.32N / 0822756.71W | Y | FB | TF | 145.14 | 18.00 | | | |
| JEVES | 265404.77N / 0822158.91W | Y | FB | TF | 144.54 | 09.19 | | | |
| TYNEE | 264750.66N / 0821702.65W | Y | FB | TF | 144.59 | 07.63 | | | |

FEDERAL AVIATION ADMINISTRATION
FLIGHT STANDARDS SERVICE
STAR (DATA RECORD)

| Arrival Name TYNEE (RNAV) | | Number THREE | | STAR Computer Code TYNEE.TYNEE3 | | Superseded Number TWO | | Dated 09/13/2018 | Effective Date |
|------------------------------|--------------------------|-----------------|-------|------------------------------------|--------|--------------------------|---------------|---------------------|----------------|
| FIX/NAVAID | LAT/LONG | C | FO/FB | LEG TYPE | TC | DIST (NM) | ALTITUDE | SPEED | REMARKS |
| En Route Transition | | | | | | | | | |
| SMOGS | 271354.93N / 0832133.48W | Y | | IF | | | | | SMOGS.TYNEE3 |
| BAGGS | 270803.28N / 0825027.20W | Y | FB | TF | 101.78 | 28.35 | | | |
| TYNEE | 264750.66N / 0821702.65W | Y | FB | TF | 123.90 | 36.02 | | | |
| | | | | | | | | | |
| Common Route | | | | | | | | | |
| TYNEE | 264750.66N / 0821702.65W | Y | | IF | | | | | TYNEE.TYNEE3 |
| BANYN | 264016.90N / 0821104.48W | Y | FO | TF | 144.65 | 09.24 | | | |
| KFMY | | | | FM | 144.65 | | | | |
| | | | | | | | | | |
| Runway Transition | | | | | | | | | |
| TYNEE | 264750.66N / 0821702.65W | Y | | IF | | | | | |
| SAANN | 263053.22N / 0820340.00W | Y | FO | TF | 144.62 | 20.73 | | | |
| KRSW:RWY 6 | | | | FM | 144.62 | | | | |
| | | | | | | | | | |
| Runway Transition | | | | | | | | | |
| TYNEE | 264750.66N / 0821702.65W | Y | | IF | | | | | |
| PASTR | 262624.99N / 0820009.33W | Y | FB | TF | 144.62 | 26.18 | | | |
| LLMER | 262321.00N / 0815516.00W | Y | FB | TF | 124.84 | 05.35 | | | |
| SPNKE | 262418.90N / 0814750.77W | Y | FB | TF | 081.76 | 06.73 | | | |
| COOPR | 262806.11N / 0814201.65W | Y | FO | TF | 054.11 | 06.44 | AT/ABOVE 4000 | | |
| KRSW:RWY 24 | | | | FM | 054.11 | | | | |