

Flight Procedures Cover Page	Task Action: FLIGHT CHECK	Task Type: IAP	Estimated Chart Date: 08/07/2025	APWS Task ID: CFABDD1DB9974BFD8372F8748D80260A	APWS Project ID: D460084D22B24DB4B0871E4BF61C73A6
Procedure: ILS OR LOC RWY 8 AMDT 2B		Enroute: NO	Specialist: Slane, Cory		Agreement Number:
Airport ID: KLCI			Airport City: LACONIA		State: NH
Facility ID: LCI	Facility Type: ILS	Flight Inspection Remark Type: New FC Slot			
<p>Procedure Comments:</p> <p>ACTIVE AIRNAV DATA USED.</p> <p>MINIMUMS UPDATED FOR NEW CONTROLLING OBSTACLES. CLEARs FDC NOTAM 2/3944.</p> <p>POC: ERIC SUSKI, AJV-A33, 405-954-7331</p> <p>07/22/2025: THIS IS A CORRECTED COPY OF THE FORM APPROVED ON 07/17/2025. 1. DELETED NOTE: FOR INOPERATIVE ALS WHILE USING CON ALTIMETER SETTINGS... 2. CHANGED ALTIMETER SETTING NOTE TO READ: WHEN LOCAL ALTIMETER SETTING NOT RECEIVED, USE CON ALTIMETER SETTING AND INCREASE S-ILS 08 DA TO 1030 FEET AND VISIBILITY ¼ SM. INCREASE S-ILS 08** DA TO 982 FEET. INCREASE ALL MDAS 100 FEET. YURUN FIX MINIMUMS: INCREASE ALL MDAS 100 FEET S-LOC 08 VISIBILITIES CATS C/D 1/4 SM AND CIRCLING VISIBILITIES CATS A/B/C 1/4 SM.</p> <p>07/27/2025: THIS IS A CORRECTED COPY OF THE FORM APPROVED ON 07/17/2025. NOTES: ADDED CHART PROFILE NOTE TO *2080 WHEN USING CON ALTIMETER SETTING.</p> <p>07/28/2025: THIS IS A CORRECTED COPY OF THE FORM APPROVED ON 07/17/2025. REMOVED "*" FROM S-LOC 08 MINIMUMS LINE.</p>					

QUALITY
16
CHECKED

QUALITY
16
CHECKED

QUALITY
38
CHECKED

QUALITY
37
CHECKED

FIPC BASIC FORM								
PROCEDURE: ILS OR LOC RWY 8 AMDT 2B			AIRPORT NAME: LACONIA MUNI		AIRPORT ID: KLCI	SPECIAL CONTROL NO: YP-04-078-25		
FAC ID: LCI		CITY: LACONIA			ST: NH	ORIG CHART DATE: 08/07/2025		
DFL TYPE: PROC/A	THIRD PARTY: <input type="checkbox"/> YES	EST. TIME ON SITE: 0.4	REIMB. NUMBER:		PTS TASK ID: CFABDD1DB9974BFD8372F8748D80260A			
PREFLIGHT NOTES								
REVIEWER:					DATE:			
COMMENTS:					CHECK ONE: <input checked="" type="checkbox"/> FLT CK REQ <input type="checkbox"/> NFCR <input type="checkbox"/> REJECT			
							YES	NO
					CPV COMPLETE?		X	
PROCEDURE RESULTS								
INSPECTION DATE: 07/16/2025		CREW #: VN546	N #: N77	INSTRUMENT PROCEDURE STATUS: <input checked="" type="checkbox"/> SAT <input type="checkbox"/> SAT W/CHANGES <input type="checkbox"/> UNSAT		ARINC CODING: <input type="checkbox"/> SAT <input type="checkbox"/> SAT/GOLD <input type="checkbox"/> UNSAT		
FLIGHT INSPECTOR SIGNATURE: jon d holland @ 07/16/2025 13:06			PRINTED NAME: HOLLAND, JON DAVID			NOTAM INITIATED? <input type="checkbox"/> YES <input checked="" type="checkbox"/> NO		
FLIGHT INSPECTOR REMARKS: Special Number: YP-04-078-25. Laconia Municipal, Laconia, NH, ILS OR LOC RWY 8, AMDT 2B, Completed, SAT. MINIMUMS UPDATED FOR NEW CONTROLLING OBSTACLES. CLEARS FDC NOTAM 2/3944.								
IN-FLIGHT OBSTACLE REPORT								
OBSTRUCTION ID #:	COORDINATES OR LOCATION:		GNSS ALTITUDE (MSL):		BAROMETRIC ALTITUDE (MSL):		HEIGHT ABOVE GROUND LEVEL:	

ILS or LOC RWY 8
LACONIA MUNI (LCI)

MALSR

MISSED APPROACH: Climb to 1150 then climbing left turn to 5000 on heading 264° and ENE VOR/DME R-300 to ANIER INT and hold, continue climb-in-hold to 5000.
*Missed approach requires minimum climb of 295 feet per NM to 1500.

NE-1, 20 FEB 2025 to 20 MAR 2025

NE-1, 20 FEB 2025 to 20 MAR 2025

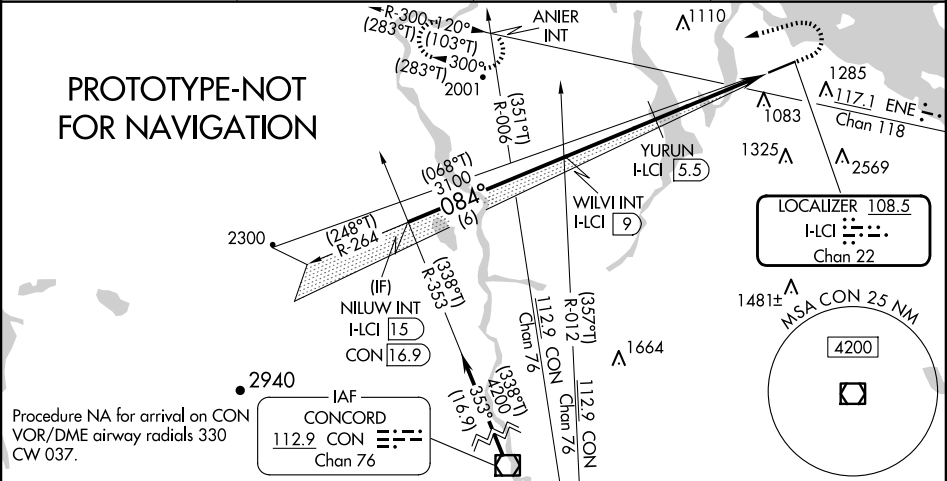
LOC/DME I-LCI	APP CRS	Rwy Ldg	5646
108.5	084°	TDZE	545
Chan 22		Apt Elev	545

ILS or LOC RWY 8
LACONIA MUNI (LCI)

⚠ Circling Rwy 26 NA at night. Circling NA south of Rwy 8-26. VDP NA when using CON altimeter setting. Inop table does not apply to S-LOC 08 Cats C/D. Helicopter visibility reduction below ¾ SM NA. For inop ALS, increase S-ILS 08 visibility to 1½ SM, YURUN fix minimums increase S-LOC 08 Cats A/B visibility to 1 SM and Cats C/D visibility to 1½ SM. When local altimeter setting not received, use CON altimeter setting and increase S-ILS 08 and S-ILS# DA to 1028 feet and S-ILS all visibilities ¼ SM. Increase all MDAs 100 feet and YURUN fix minimums visibility Cat C/D ¼ SM. And S-LOC 08 visibility Cat A ½ SM, and Circling visibility Cat A/B/C ¼ SM. For inop ALS while using CON altimeter settings increase S-ILS 08# visibility all Cats to 1½ SM; increase S-ILS 08# visibility all Cats to 1½ SM; inop table does not apply to S-LOC 08 Cats A/C/D; increase YURUN fix minimums S-LOC 08 Cat A/B to 1 SM and Cat C/D to 1½ SM. *2080 when using CON altimeter setting.

MALS
● **AS**
MISSED APPROACH: Climb to 1150 then climbing left turn to 5000 on heading 264° and ENE VOR/DME R-300 to ANIER INT and hold, continue climb-in-hold to 5000. # Missed approach requires minimum climb of 295 feet per NM to 1500.

AWOS-3PT 133.525	BOSTON APP CON 134.75 254.25	CLNC DEL 119.85	UNICOM 123.0 (CTAF) 0
---------------------	---------------------------------	--------------------	---------------------------------



NILUW INT I-LCI 15	WILVI INT I-LCI 9	1150	5000	ENE R-300	ANIER INT
4200	3100	1980*	1980	1980	1980
GS 3.00° TCH 44	3100	1980	1980	1980	1980
6 NM	3.5 NM	2.7 NM	1.7 NM		
CATEGORY	A	B	C	D	
S-ILS 8#		901-¾	356 (400-¾)		
S-ILS 8		949-¾	404 (500-¾)		
S-LOC 8	1980-¾ 1435 (1500-¾)	1980-1 1435 (1500-1)	1980-3	1435 (1500-3)	
C CIRCLING	1980-1¼ 1435 (1500-1¼)	1980-1½ 1435 (1500-1½)	1980-3	1435 (1500-3)	
YURUN FIX MINIMUMS					
S-LOC 8	1120-¾	575 (600-¾)	1120-1¼	575 (600-1¼)	
C CIRCLING	1320-1	775 (800-1)	1320-2¼ 775 (800-2¼)	1480-3 935 (1000-3)	

