

Flight Procedures Cover Page	Task Action: FLIGHT CHECK	Task Type: IAP	Estimated Chart Date: 08/07/2025	APWS Task ID: CFABDD1DB9974BFD8372F8748D80260A	APWS Project ID: D460084D22B24DB4B0871E4BF61C73A6
Procedure: ILS OR LOC RWY 8 AMDT 2B		Enroute: NO	Specialist: Slane, Cory		Agreement Number:
Airport ID: KLCI			Airport City: LACONIA		State: NH
Facility ID: LCI	Facility Type: ILS	Flight Inspection Remark Type: New FC Slot			
<div>Procedure Comments: ACTIVE AIRNAV DATA USED. MINIMUMS UPDATED FOR NEW CONTROLLING OBSTACLES. CLEARs FDC NOTAM 2/3944. POC: ERIC SUSKI, AJV-A33, 405-954-7331</div> <div>QUALITY 38 CHECKED</div>					

FIPC BASIC FORM							
PROCEDURE: ILS OR LOC RWY 8 AMDT 2B			AIRPORT NAME: LACONIA MUNI		AIRPORT ID: KLCI	SPECIAL CONTROL NO: YP-04-078-25	
FAC ID: LCI		CITY: LACONIA			ST: NH	ORIG CHART DATE: 08/07/2025	
DFL TYPE: PROC/A	THIRD PARTY: <input type="checkbox"/> YES	EST. TIME ON SITE: 0.4	REIMB. NUMBER:		PTS TASK ID: CFABDD1DB9974BFD8372F8748D80260A		
PREFLIGHT NOTES							
REVIEWER:					DATE:		
COMMENTS:					CHECK ONE:		
					<input checked="" type="checkbox"/> FLT CK REQ <input type="checkbox"/> NFCR <input type="checkbox"/> REJECT		
							YES
					CPV COMPLETE?		X
PROCEDURE RESULTS							
INSPECTION DATE: 07/16/2025		CREW #: VN546	N #: N77	INSTRUMENT PROCEDURE STATUS: <input checked="" type="checkbox"/> SAT <input type="checkbox"/> SAT W/CHANGES <input type="checkbox"/> UNSAT		ARINC CODING: <input type="checkbox"/> SAT <input type="checkbox"/> SAT/GOLD <input type="checkbox"/> UNSAT	
FLIGHT INSPECTOR SIGNATURE: jon d holland @ 07/16/2025 13:06			PRINTED NAME: HOLLAND, JON DAVID			NOTAM INITIATED? <input type="checkbox"/> YES <input checked="" type="checkbox"/> NO	
FLIGHT INSPECTOR REMARKS: Special Number: YP-04-078-25. Laconia Municipal, Laconia, NH, ILS OR LOC RWY 8, AMDT 2B, Completed, SAT. MINIMUMS UPDATED FOR NEW CONTROLLING OBSTACLES. CLEARS FDC NOTAM 2/3944.							
IN-FLIGHT OBSTACLE REPORT							
OBSTRUCTION ID #:	COORDINATES OR LOCATION:		GNSS ALTITUDE (MSL):		BAROMETRIC ALTITUDE (MSL):		HEIGHT ABOVE GROUND LEVEL:

ILS or LOC RWY 8
LACONIA MUNI (LCI)

MALSR

MISSSED APPROACH: Climb to 1150 then climbing left turn to 5000 on heading 264° and ENE VOR/DME R-300 to ANIER INT and hold, continue climb-in-hold to 5000.
*Missed approach requires minimum climb of 295 feet per NM to 1500.

MSA CON 25 NM

4200

Procedure NA for arrival on CON VOR/DME airway radials 330 CW 037.

IAF
CONCORD
112.9 CON
Chan 76

ANIER

YURUN
I-LCI 5.5

WILVI INT
I-LCI 9

LOCALIZER 108.5
I-LCI
Chan 22

112.9 CON
Chan 76

112.9 CON
Chan 76

1110

1285

1083

1325

2569

1481±

1664

2940

2300

3100

084°

120°

300°

2001

R-300

R-006

R-264

R-353

(IF)

NILUV INT
I-LCI 15
CON 16.9

4200

3353

116.9

112.9 CON
Chan 76

ELEV	545	D	TDZE	545
------	-----	----------	------	-----

REIL Rwy 26 **1**
 HIRL Rwy 8-26 **1**

FAF to MAP 7.9 NM					
Knots	60	90	120	150	180
Min:Sec	7:54	5:16	3:57	3:10	2:38

NE-1, 20 FEB 2025 to 20 MAR 2025

NE-1, 20 FEB 2025 to 20 MAR 2025

LOC/DME I-LCI 108.5 Chan 22	APP CRS 084°	Rwy Ldg 5646 TDZE 545 Apt Elev 545
---	------------------------	---

ILS or LOC RWY 8
LA CONIA MUNI (LCI)

T Circling Rwy 26 NA at night. Circling NA south of Rwy 8-26. VDP NA when using CON altimeter setting. Inop table does not apply to S-LOC 08 Cats C/D. Helicopter visibility reduction below $\frac{3}{4}$ SM NA. For inop ALs, increase S-ILS 08 visibility to $\frac{1}{2}$ SM, YURUN fix minimums increase S-LOC 08 Cats A/B visibility to 1 SM and Cats C/D visibility to $\frac{1}{2}$ SM. When local altimeter setting not received, use CON altimeter setting and increase S-ILS 08 and S-ILS# DA to 1028 feet and S-ILS all visibilities $\frac{1}{2}$ SM. Increase all MDAs 100 feet and YURUN fix minimums visibility Cat C/D $\frac{1}{4}$ SM. And S-LOC 08 visibility Cat A $\frac{1}{2}$ SM, and Circling visibility Cat A/B/C $\frac{1}{4}$ SM. For inop ALs while using CON altimeter settings increase S-ILS 08# visibility all Cats to $\frac{1}{2}$ SM; increase S-ILS 08# visibility all Cats to $\frac{1}{4}$ SM; inop table does not apply to S-LOC 08 Cats A/C/D; increase YURUN fix minimums S-LOC 08 Cat A/B to 1 SM and Cat C/D to $\frac{1}{2}$ SM. *2080 when using CON altimeter setting.

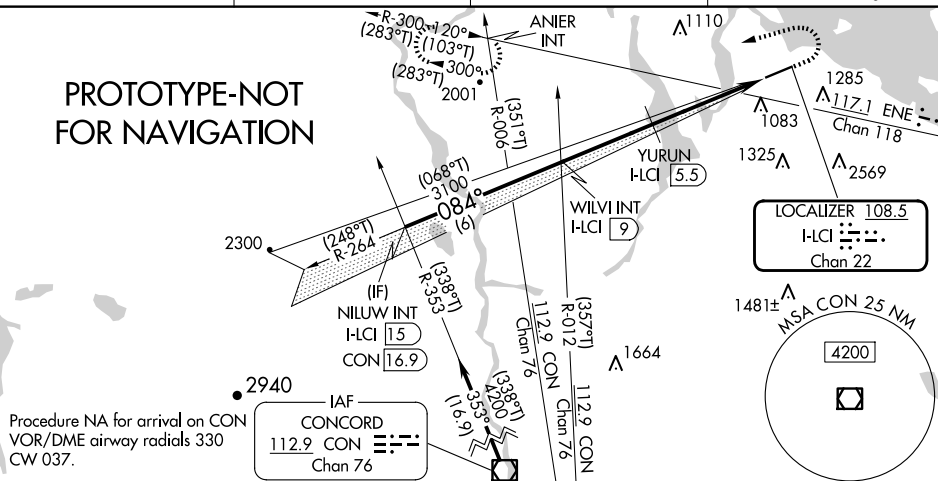
MALSR



MISSED APPROACH: Climb to 1150 then climbing left turn to 5000 on heading 264° and ENE VOR/DME R-300 to ANIER INT and hold, continue climb-in-hold to 5000. # Missed approach requires minimum climb of 295 feet per NM to 1500.

AWOS-3PT 133.525	BOSTON APP CON 134.75 254.25	CLNC DEL 119.85	UNICOM 123.0 (CTAF) 0
----------------------------	--	---------------------------	---------------------------------

PROTOTYPE-NOT
FOR NAVIGATION



YURUN FIX MINIMUMS

CATEGORY	A	B	C	D
S-ILS 8#	901- $\frac{3}{4}$	356 (400- $\frac{3}{4}$)		
S-ILS 8	949- $\frac{3}{4}$	404 (500- $\frac{3}{4}$)		
S-LOC 8	1980- $\frac{3}{4}$ 1435 (1500- $\frac{3}{4}$)	1980-1 1435 (1500-1)	1980-3	1435 (1500-3)
C CIRCLING	1980-1 $\frac{1}{4}$ 1435 (1500-1 $\frac{1}{4}$)	1980-1 $\frac{1}{2}$ 1435 (1500-1 $\frac{1}{2}$)	1980-3	1435 (1500-3)

YURUN FIX MINIMUMS

S-LOC 8	1120- $\frac{3}{4}$	575 (600- $\frac{3}{4}$)	1120-1 $\frac{1}{4}$	575 (600-1 $\frac{1}{4}$)
C CIRCLING	1320-1	775 (800-1)	1320-2 $\frac{1}{4}$ 775 (800-2 $\frac{1}{4}$)	1480-3 935 (1000-3)

Diagram Details:
 - **WILVI INT I-CL 9**: 3100
 - **YURUN I-CL 5.5**: 1980*
 - **I-CL 2.8**: 1980*
 - **I-CL 1.1**: 1980*
 - **Distances**: 6 NM, 3.5 NM, 2.7 NM, 1.7 NM
 - **Altitudes**: 4200, 3100, 1980*
 - **Angles**: 084°, 264°
 - **Other**: GS 3.00° TCH 44, ENE R-300, ANIER INT

