

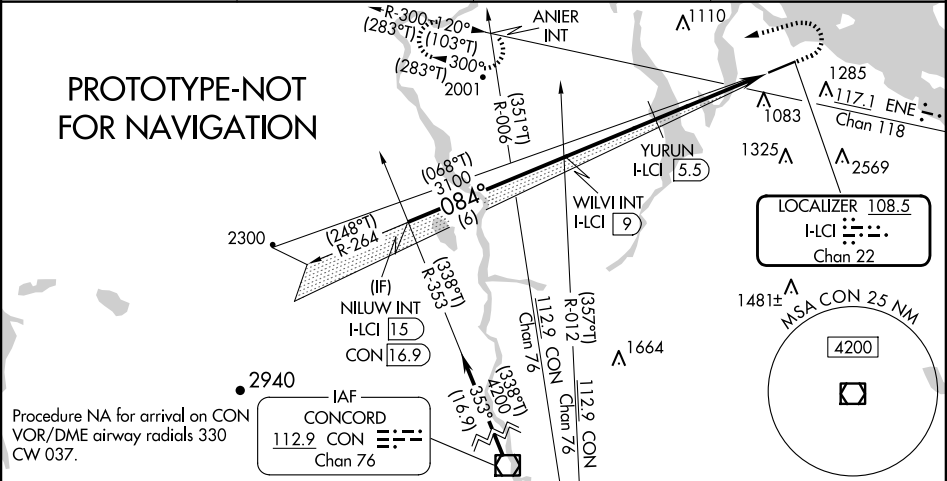
LOC/DME I-LCI	APP CRS	Rwy Ldg	5646
108.5	084°	TDZE	545
Chan 22		Apt Elev	545

ILS or LOC RWY 8
LACONIA MUNI (LCI)

⚠ Circling Rwy 26 NA at night. Circling NA south of Rwy 8-26. VDP NA when using CON altimeter setting. Inop table does not apply to S-LOC 08 Cats C/D. Helicopter visibility reduction below ¾ SM NA. For inop ALS, increase S-ILS 08 visibility to 1½ SM, YURUN fix minimums increase S-LOC 08 Cats A/B visibility to 1 SM and Cats C/D visibility to 1½ SM. When local altimeter setting not received, use CON altimeter setting and increase S-ILS 08 and S-ILS# DA to 1028 feet and S-ILS all visibilities ¼ SM. Increase all MDAs 100 feet and YURUN fix minimums visibility Cat C/D ¼ SM. And S-LOC 08 visibility Cat A ½ SM, and Circling visibility Cat A/B/C ¼ SM. For inop ALS while using CON altimeter settings increase S-ILS 08# visibility all Cats to 1½ SM; increase S-ILS 08# visibility all Cats to 1½ SM; inop table does not apply to S-LOC 08 Cats A/C/D; increase YURUN fix minimums S-LOC 08 Cat A/B to 1 SM and Cat C/D to 1½ SM. *2080 when using CON altimeter setting.

MALS
● **AS**
MISSED APPROACH: Climb to 1150 then climbing left turn to 5000 on heading 264° and ENE VOR/DME R-300 to ANIER INT and hold, continue climb-in-hold to 5000. # Missed approach requires minimum climb of 295 feet per NM to 1500.

AWOS-3PT 133.525	BOSTON APP CON 134.75 254.25	CLNC DEL 119.85	UNICOM 123.0 (CTAF) 0
---------------------	---------------------------------	--------------------	---------------------------------



<div><div>NILUW INT I-LCI 15</div><div>WILVI INT I-LCI 9</div><div>YURUN I-LCI 5.5</div><div>I-LCI 2.8</div><div>I-LCI 1.1</div></div>				<div><div>1150</div><div>5000</div><div>ENE R-300</div><div>ANIER INT</div></div>		<div><div>ELEV 545</div><div>D</div><div>TDZE 545</div></div>					
<div><div>4200</div><div>GS 3.00° TCH 44</div><div>3100</div><div>1980*</div><div>6 NM</div><div>3.5 NM</div><div>2.7 NM</div><div>1.7 NM</div></div>				<div><div>↑</div><div>hdg 264°</div></div>		<div><div>ANIER INT</div></div>					
CATEGORY				A		B		C		D	
S-ILS 8#		901-¾		356 (400-¾)							
S-ILS 8		949-¾		404 (500-¾)							
S-LOC 8		1980-¾ 1435 (1500-¾)		1980-1 1435 (1500-1)		1980-3 1435 (1500-3)					
CIRCLING		1980-1¼ 1435 (1500-1¼)		1980-1½ 1435 (1500-1½)		1980-3 1435 (1500-3)					
YURUN FIX MINIMUMS											
S-LOC 8		1120-¾ 575 (600-¾)		1120-1¼ 575 (600-1¼)		575 (600-1¼)					
CIRCLING		1320-1 775 (800-1)		1320-2¼ 775 (800-2¼)		1480-3 935 (1000-3)					

4200

GS 3.00°
TCH 44

3100

1980*

6 NM

3.5 NM

2.7 NM

1.7 NM

↑

hdg
264°

ANIER INT

ELEV 545

D

TDZE 545

4200

GS 3.00°
TCH 44

3100

1980*

6 NM

3.5 NM

2.7 NM

1.7 NM

↑

hdg
264°

ANIER INT

ELEV 545

D

TDZE 545

4200

GS 3.00°
TCH 44

3100

1980*

6 NM

3.5 NM

2.7 NM

1.7 NM

↑

hdg
264°

ANIER INT

ELEV 545

D

TDZE 545

4200

GS 3.00°
TCH 44

3100

1980*

6 NM

3.5 NM

2.7 NM

1.7 NM

↑

hdg
264°

ANIER INT

ELEV 545

D

TDZE 545

4200

GS 3.00°
TCH 44

3100

1980*

6 NM

3.5 NM

2.7 NM

1.7 NM

↑

hdg
264°

ANIER INT

ELEV 545

D

TDZE 545

4200

GS 3.00°
TCH 44

3100

1980*

6 NM

3.5 NM

2.7 NM

1.7 NM

↑

hdg
264°

ANIER INT

ELEV 545

D

TDZE 545

4200

GS 3.00°
TCH 44

3100

1980*

6 NM

3.5 NM

2.7 NM

1.7 NM

↑

hdg
264°

ANIER INT

ELEV 545

D

TDZE 545

4200

GS 3.00°
TCH 44

3100

1980*

6 NM

3.5 NM

2.7 NM

1.7 NM

↑

hdg
264°

ANIER INT

ELEV 545

D

TDZE 545

4200

GS 3.00°
TCH 44

3100

1980*

6 NM

3.5 NM

2.7 NM

1.7 NM

↑

hdg
264°

ANIER INT

ELEV 545

D

TDZE 545

4200

GS 3.00°
TCH 44

3100

1980*

6 NM

3.5 NM

2.7 NM

1.7 NM

↑

hdg
264°

ANIER INT

ELEV 545

D

TDZE 545

4200

GS 3.00°
TCH 44

3100

1980*

6 NM

3.5 NM

2.7 NM

1.7 NM

↑

hdg
264°

ANIER INT

ELEV 545

D

TDZE 545

4200

GS 3.00°
TCH 44

3100

1980*

6 NM

3.5 NM

2.7 NM

1.7 NM

↑

hdg
264°

ANIER INT

ELEV 545

D

TDZE 545

4200

GS 3.00°
TCH 44

3100

1980*

6 NM

3.5 NM

2.7 NM

1.7 NM

↑

hdg
264°

ANIER INT

ELEV 545

D

TDZE 545

4200

GS 3.00°
TCH 44

3100

1980*

6 NM

3.5 NM

2.7 NM

1.7 NM

↑

hdg
264°

ANIER INT

ELEV 545

D

TDZE 545

4200

GS 3.00°
TCH 44

3100

1980*

6 NM

3.5 NM

2.7 NM

1.7 NM

↑

hdg
264°

ANIER INT

ELEV 545

D

TDZE 545

4200

GS 3.00°
TCH 44

3100

1980*

6 NM

3.5 NM

2.7 NM

1.7 NM

↑

hdg
264°

ANIER INT

ELEV 545

D

TDZE 545

4200

GS 3.00°
TCH 44

3100

1980*

6 NM

3.5 NM

2.7 NM

1.7 NM

↑

hdg
264°

ANIER INT

ELEV 545

D

TDZE 545

4200

GS 3.00°
TCH 44

3100

1980*

6 NM

3.5 NM

2.7 NM

1.7 NM

↑

hdg
264°

ANIER INT

ELEV 545

D

TDZE 545

4200

GS 3.00°
TCH 44

3100

1980*

6 NM

3.5 NM

2.7 NM

1.7 NM

↑

hdg
264°

ANIER INT

ELEV 545

D

TDZE 545

4200

GS 3.00°
TCH 44

3100

1980*

6 NM

3.5 NM

2.7 NM

1.7 NM

↑

hdg
264°

ANIER INT

ELEV 545

D

TDZE 545

4200

GS 3.00°
TCH 44

3100

1980*

6 NM

3.5 NM

2.7 NM

1.7 NM

↑

hdg
264°

ANIER INT

ELEV 545

D

TDZE 545

4200

GS 3.00°
TCH 44

3100

1980*

6 NM

3.5 NM

2.7 NM

1.7 NM

↑

hdg
264°

ANIER INT

ELEV 545

D

TDZE 545

4200

GS 3.00°
TCH 44

3100

1980*

6 NM

3.5 NM

2.7 NM

1.7 NM

↑

hdg
264°

ANIER INT

ELEV 545

D

TDZE 545

4200

GS 3.00°
TCH 44

3100

1980*

6 NM

3.5 NM

2.7 NM

1.7 NM

↑

hdg
264°

ANIER INT

ELEV 545

D

TDZE 545

4200

GS 3.00°
TCH 44

3100

1980*

6 NM

3.5 NM

2.7 NM

1.7 NM

↑

hdg
264°

ANIER INT

ELEV 545

D

TDZE 545

4200

GS 3.00°
TCH 44

3100

1980*

6 NM

3.5 NM

2.7 NM

1.7 NM

↑

hdg
264°

ANIER INT

ELEV 545

D

TDZE 545

4200

GS 3.00°
TCH 44

3100

1980*

6 NM

3.5 NM

2.7 NM

1.7 NM

↑

hdg
264°

ANIER INT

ELEV 545

D

TDZE 545

4200

GS 3.00°
TCH 44

3100

1980*

6 NM

3.5 NM

2.7 NM

1.7 NM

↑

hdg
264°

ANIER INT

ELEV 545

D

TDZE 545

4200

GS 3.00°
TCH 44

3100

1980*

6 NM

3.5 NM

2.7 NM

1.7 NM

↑

hdg
264°

ANIER INT

ELEV 545

D

TDZE 545

4200

GS 3.00°
TCH 44

3100

1980*

6 NM

3.5 NM

2.7 NM

1.7 NM

↑

hdg
264°

ANIER INT

ELEV 545

D

TDZE 545

4200

GS 3.00°
TCH 44

3100

1980*

6 NM

3.5 NM

2.7 NM

1.7 NM

↑

hdg
264°

ANIER INT

ELEV 545

D

TDZE 545

4200

GS 3.00°
TCH 44

3100

1980*

6 NM

3.5 NM

2.7 NM

1.7 NM

↑

hdg
264°

ANIER INT

ELEV 545

D

TDZE 545

4200

GS 3.00°
TCH 44

3100

1980*

6 NM

3.5 NM

2.7 NM

1.7 NM

↑

hdg
264°

ANIER INT

ELEV 545

D

TDZE 545

4200

GS 3.00°
TCH 44

3100

1980*

6 NM

3.5 NM

2.7 NM

1.7 NM

↑

hdg
264°

ANIER INT

ELEV 545

D

TDZE 545

4200

GS 3.00°
TCH 44

3100

1980*

6 NM

3.5 NM

2.7 NM

1.7 NM

↑

hdg
264°

ANIER INT

ELEV 545

D

TDZE 545

4200

GS 3.00°
TCH 44

3100

1980*

6 NM

3.5 NM

2.7 NM

1.7 NM

↑

hdg
264°

ANIER INT

ELEV 545

D

TDZE 545

4200

GS 3.00°
TCH 44

3100

1980*

6 NM

3.5 NM

2.7 NM

1.7 NM

↑

hdg
264°

ANIER INT

ELEV 545

D

TDZE 545

4200

GS 3.00°
TCH 44

3100

1980*

6 NM

3.5 NM

2.7 NM

1.7 NM

↑

hdg
264°

ANIER INT

ELEV 545

D

TDZE 545

4200

GS 3.00°
TCH 44

3100

1980*

6 NM

3.5 NM

2.7 NM

1.7 NM

↑

hdg
264°

ANIER INT

ELEV 545

D

TDZE 545

4200

GS 3.00°
TCH 44

3100

1980*

6 NM

3.5 NM

2.7 NM

1.7 NM

↑

hdg
264°

ANIER INT

ELEV 545

D

TDZE 545

4200

GS 3.00°
TCH 44

3100

1980*

6 NM

3.5 NM

2.7 NM

1.7 NM

↑

hdg
264°

ANIER INT

ELEV 545

D

TDZE 545

4200

GS 3.00°
TCH 44

3100

1980*

6 NM

3.5 NM

2.7 NM

1.7 NM

↑

hdg
264°

ANIER INT

ELEV 545

D

TDZE 545

4200

GS 3.00°
TCH 44

3100

1980*

6 NM

3.5 NM

2.7 NM

1.7 NM

↑

hdg
264°

ANIER INT

ELEV 545

D

TDZE 545

4200

GS 3.00°
TCH 44

3100

1980*

6 NM

3.5 NM

2.7 NM

1.7 NM

↑

hdg
264°

ANIER INT

ELEV 545

D

TDZE 545

4200

GS 3.00°
TCH 44

3100

1980*

6 NM

3.5 NM

2.7 NM

1.7 NM

↑

hdg
264°

ANIER INT

ELEV 545

D

TDZE 545

4200

GS 3.00°
TCH 44

3100

1980*

6 NM

3.5 NM

2.7 NM

1.7 NM

↑

hdg
264°

ANIER INT

ELEV 545

D

TDZE 545

4200

GS 3.00°
TCH 44

3100

1980*

6 NM

3.5 NM

2.7 NM

1.7 NM

↑

hdg
264°

ANIER INT

ELEV 545

D

TDZE 545

4200

GS 3.00°
TCH 44

3100

1980*

6 NM

3.5 NM

2.7 NM

1.7 NM

↑

hdg
264°

ANIER INT

ELEV 545

D

TDZE 545

4200

GS 3.00°
TCH 44

3100

1980*

6 NM

3.5 NM

2.7 NM

1.7 NM

↑

hdg
264°

ANIER INT

ELEV 545

D

TDZE 545

4200

GS 3.00°
TCH 44

3100

1980*

6 NM

3.5 NM

2.7 NM

1.7 NM

↑

hdg
264°

ANIER INT

ELEV 545

D

TDZE 545

4200

GS 3.00°
TCH 44

3100

1980*

6 NM

3.5 NM

2.7 NM

1.7 NM

↑

hdg
264°

ANIER INT

ELEV 545

D

TDZE 545

4200

GS 3.00°
TCH 44

3100

1980*

6 NM

3.5 NM

2.7 NM

1.7 NM

↑

hdg
264°

ANIER INT

ELEV 545

D

TDZE 545

4200

GS 3.00°
TCH 44

3100

1980*

6 NM

3.5 NM

2.7 NM

1.7 NM

↑

hdg
264°

ANIER INT

ELEV 545

D

TDZE 545

4200

GS 3.00°
TCH 44

3100

1980*

6 NM

3.5 NM

2.7 NM

1.7 NM

↑

hdg
264°

ANIER INT

ELEV 545

D

TDZE 545

4200

GS 3.00°
TCH 44

3100

1980*

6 NM

3.5 NM

2.7 NM

1.7 NM

↑

hdg
264°

ANIER INT

ELEV 545

D

TDZE 545

4200

GS 3.00°
TCH 44

3100

1980*

6 NM

3.5 NM

2.7 NM

1.7 NM

↑

hdg
264°

ANIER INT

ELEV 545

D

TDZE 545

4200

GS 3.00°
TCH 44

3100

1980*

6 NM

3.5 NM

2.7 NM

1.7 NM

↑

hdg
264°

ANIER INT

ELEV 545

D

TDZE 545

4200

GS 3.00°
TCH 44

3100

1980*

6 NM

3.5 NM

2.7 NM

1.7 NM

↑

hdg
264°

ANIER INT

ELEV 545

D

TDZE 545

4200

GS 3.00°
TCH 44

3100

1980*

6 NM

3.5 NM

2.7 NM

1.7 NM

↑

hdg
264°

ANIER INT

ELEV 545

D

TDZE 545

4200

GS 3.00°
TCH 44

3100

1980*

6 NM

3.5 NM

2.7 NM

1.7 NM

↑

hdg
264°

ANIER INT

ELEV 545

D

TDZE 545

4200

GS 3.00°
TCH 44

3100

1980*

6 NM

3.5 NM

2.7 NM

1.7 NM

↑

hdg
264°

ANIER INT

ELEV 545

D

TDZE 545

4200

GS 3.00°
TCH 44

3100

1980*

6 NM

3.5 NM

2.7 NM

1.7 NM

↑

hdg
264°

ANIER INT

ELEV 545

D

TDZE 545

4200

GS 3.00°
TCH 44

3100

1980*

6 NM

3.5 NM

2.7 NM

1.7 NM

↑

hdg
264°

ANIER INT

ELEV 545

D

TDZE 545

4200

GS 3.00°
TCH 44

3100

1980*

6 NM

3.5 NM

2.7 NM

1.7 NM

↑

hdg
264°

ANIER INT

ELEV 545

D

TDZE 545

4200

GS 3.00°
TCH 44

3100

1980*

6 NM

3.5 NM

2.7 NM

1.7 NM

↑

hdg
264°

ANIER INT

ELEV 545

D

TDZE 545

4200

GS 3.00°
TCH 44

3100

1980*

6 NM

3.5 NM

2.7 NM

1.7 NM

↑

hdg
264°

ANIER INT

ELEV 545

D

TDZE 545

4200

GS 3.00°
TCH 44

3100

1980*

6 NM

3.5 NM

2.7 NM

1.7 NM

↑

hdg
264°

ANIER INT

ELEV 545

D

TDZE 545

4200

GS 3.00°
TCH 44

3100

1980*

6 NM

3.5 NM

2.7 NM

1.7 NM

↑

hdg
264°

ANIER INT

ELEV 545

D

TDZE 545

4200

GS 3.00°
TCH 44

3100

1980*

6 NM

3.5 NM

2.7 NM

1.7 NM

↑

hdg
264°

ANIER INT

ELEV 545

D

TDZE 545

4200

GS 3.00°
TCH 44

3100

1980*

6 NM

3.5 NM