

DME DME Assessment Results for FRDMM6 path ALWYZ_HEROO

Results Summary

Flyability:	Completed
DME/DME:	Completed - No Critical DMEs
Name:	David C-CTR Cook
Project File:	C:\Users\David C-CTR Cook\Documents\TARGETS WORK\KDCA 5-16-2024 7.1.0\7.2.1 FILES DME_DME MITRE 3DEP\FRDMM6\COMBINED_KDCA_KADW FRDMM6 (RNAV) STAR_20231220.tgs
Output File:	C:\Users\David C-CTR Cook\Documents\TARGETS WORK\KDCA 5-16-2024 7.1.0\7.2.1 FILES DME_DME MITRE 3DEP\FRDMM6\KDCA [IFPA] FRDMM6 20231220_0732 EST\ALWYZ_HEROO\KDCA FRDMM6 RNAV STAR ALWYZ HEROO 20231220_0732 EST.pdf
Procedure Name:	FRDMM6
Software: DmeDmePlugin:	7.2.1
Date/Time:	12/20/2023 07:32 EST
Databases:	MITRE 3DEP 3 arcsec

Failures

No Failures

Warnings

No Warnings

Informational

No Informational

Notes For Flight Check

None

Flight Plan

Name	Type	Lat/Lon	Altitude (ft)	VNAV Mode	Ground Speed (kts)	Turn Type	Leg Type
ALWYZ	WP	N38° 59' 00.6600", W077° 39' 16.5400"	8000	VNAV	250	FLY_BY	TF
LETZZ	WP	N38° 54' 42.3600", W077° 27' 02.4000"	8000	VNAV	250	FLY_BY	TF
RLLLL	WP	N38° 50' 55.1100", W077° 18' 20.2300"	6000	VNAV	250	FLY_BY	TF
VCTRY	WP	N38° 45' 43.6300", W077° 06' 49.2800"	6000	VNAV	250	FLY_BY	TF
HEROO	WP	N38° 37' 37.4200", W077° 06' 22.2700"	6000	VNAV	250	FLY_OVER	TF

Flyability

Flight Type:	RNAV_STAR
Selected Airport:	KDCA [IFPA]
Climb Gradient:	None assigned
Speeds:	200 Ground Speed to 11000 FT
	240 Ground Speed to 18000 FT
	260 Ground Speed to 24000 FT
	340 Ground Speed above 24000 FT
Descent During a Turn:	Allowed
VNAV Mode:	Flight Plan

DME DME Assessment Results for FRDMM6 path ALWYZ_HEROO

DME/DME	
RNP:	RNP 2
Flight Mode:	Manual
Line of Sight (DTED Level 0 Max):	Evaluated
Inertial Drift:	Enabled
Initial Drift:	0.558 NM
INS Drift Rate:	8.0 NM/Hour
Range Mode:	OSV
RNP Edges:	Evaluated
Min DME Range:	3.0 NM
DME Types:	DME, VOR-DME, VORTAC, TACAN
DME Include Angles:	30 to 150
Critical DMEs:	Allowed
DoD Facilities:	Not included
Foreign Facilities:	Not included
High DMEs:	Included
Low DMEs:	Included
Terminal DMEs:	Included
Flight Check DMEs:	Not selected
Higher Altitudes:	Not Evaluated
Near Maximum Altitude:	Not Evaluated
Automatic ESVs:	Not enabled
Disabled DMEs:	FKN

DME/DME (Continued)										
DMEs Used										
#	Name	Lat/Lon	MAGVAR	Range	Type	Source	Critical	Status	Time	Distance
1	MRB	N39° 23' 08.0600", W077° 50' 54.0820"	7.0 W	40	L	IFPA	NO	Enabled	41.2 %	41.2 %
2	LDN	N38° 51' 15.8344", W078° 12' 20.0559"	6.0 W	40	L	IFPA	NO	Enabled	36 %	36 %
3	OTT	N38° 42' 21.1352", W076° 44' 41.0854"	10.0 W	40	L	IFPA	NO	Enabled	83.2 %	83.2 %
4	BAL	N39° 10' 15.8283", W076° 39' 40.5225"	11.0 W	40	L	IFPA	NO	Enabled	50.5 %	50.5 %
5	BRV	N38° 20' 10.5264", W077° 21' 10.3159"	9.0 W	40	L	IFPA	NO	Enabled	80.6 %	80.6 %
6	CSN	N38° 38' 28.3277", W077° 51' 55.7979"	6.0 W	130	H	IFPA	NO	Enabled	100 %	100 %
7	AML	N38° 56' 04.5329", W077° 28' 00.1263"	8.0 W	40	L	IFPA	NO	Enabled	77.4 %	77.4 %
8	ADW	N38° 48' 25.9900", W076° 51' 58.5200"	10.0 W	40	L	IFPA	NO	Enabled	44.2 %	44.2 %
9	DCA	N38° 51' 34.0300", W077° 02' 11.1700"	9.0 W	40	L	IFPA	NO	Enabled	97.9 %	97.9 %
10	FKN	N36° 42' 51.2443", W077° 00' 44.5488"	9.0 W	40	L	IFPA	NO	Disabled		

Flight Check DME Selection						
Distance [NM]	Selected DMEs					Alternate
0.0	MRB	LDN	AML	CSN	ADW	DCA
4.4	MRB	LDN	CSN	ADW	DCA	
13.3	MRB	CSN	BRV	DCA	ADW	OTT
15.2	BRV	DCA	ADW	OTT	AML	CSN
16.3	BRV	DCA	OTT	AML	CSN	
27.9	AML	BAL	BRV	OTT	CSN	
35.4	AML	BRV	CSN	DCA	OTT	

Inertial Drift Segments			
#	Start Location	End Location	Length [NM]

DME DME Assessment Results for FRDMM6 path ALWYZ_HEROO

Available DMEs by Waypoints

Waypoint Before	Waypoint After	DME List	Suggested DMEs
ALWYZ	LETZZ	AML, DCA, ADW, LDN, BRV, MRB, OTT, CSN	
LETZZ	RLLLL	AML, DCA, ADW, BRV, LDN, MRB, BAL, OTT, CSN	
RLLLL	VCTRY	AML, DCA, BRV, BAL, OTT, CSN	
VCTRY	HEROO	AML, DCA, BRV, BAL, OTT, CSN	

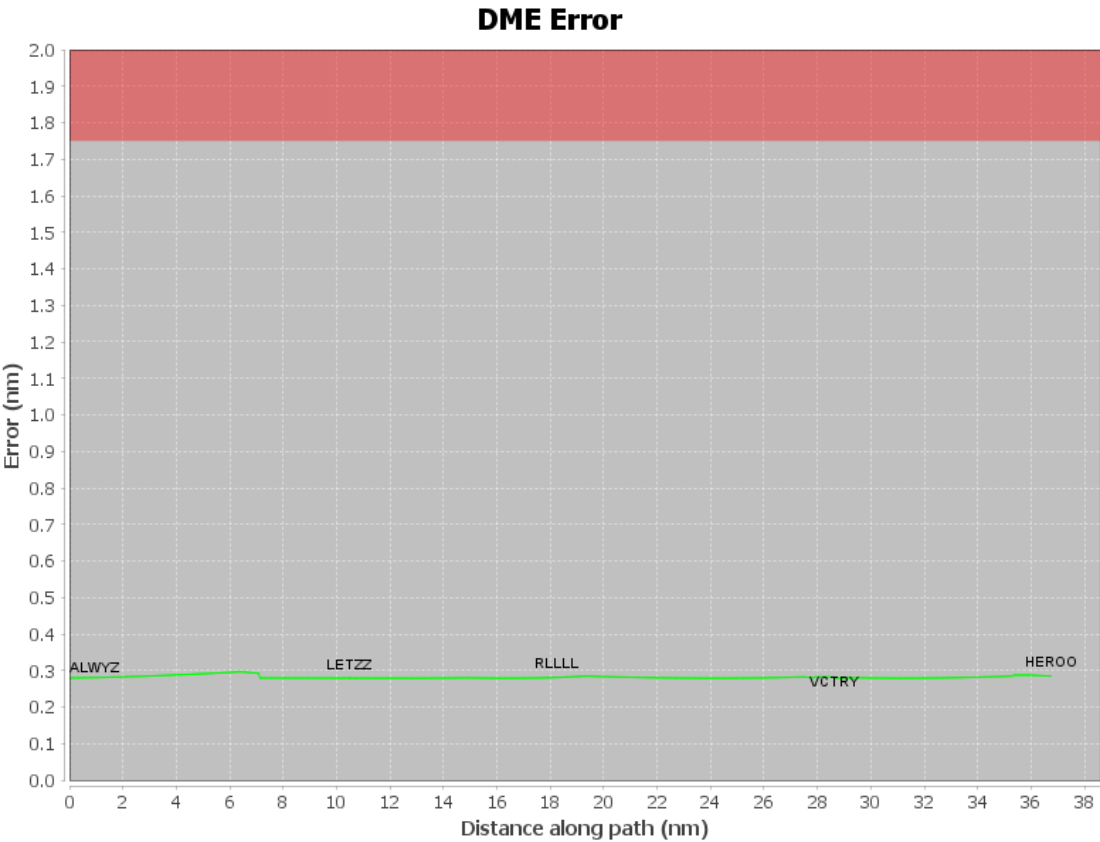
User Data Files

#	File Name
None	

User DMEs

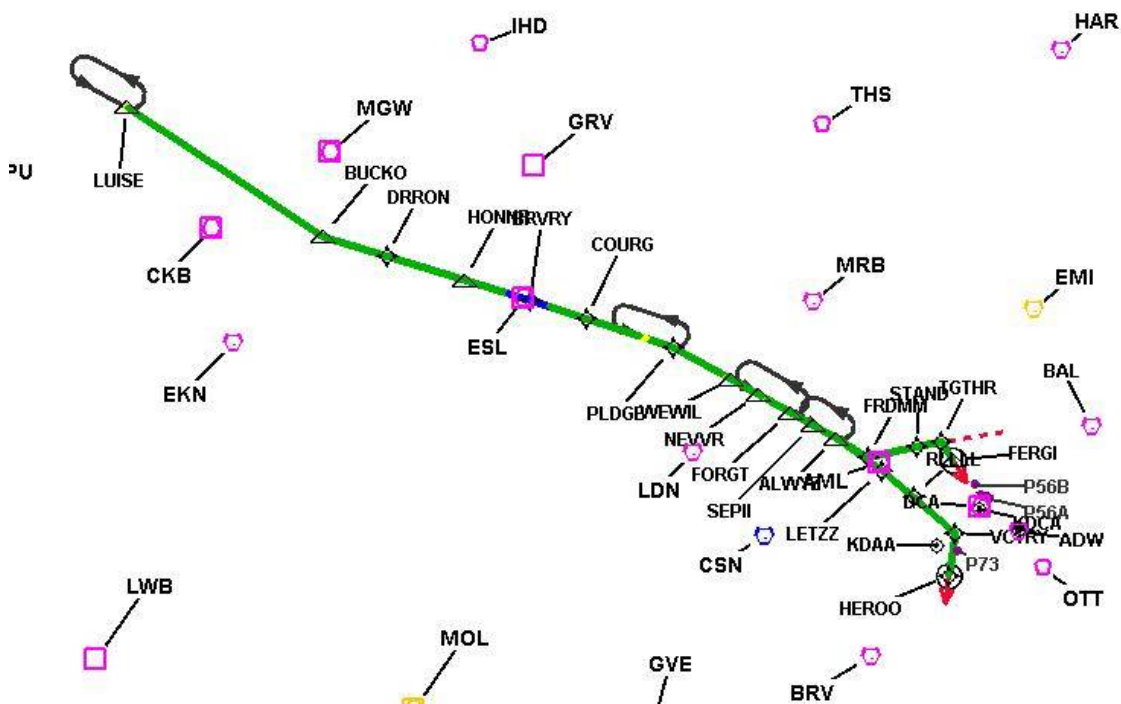
#	Name	Lat/Lon	MAGVAR	Range	Elevation [ft]	Frequency	Replaces	Status
None								

DME DME Assessment Results for FRDMM6 path ALWYZ_HEROO



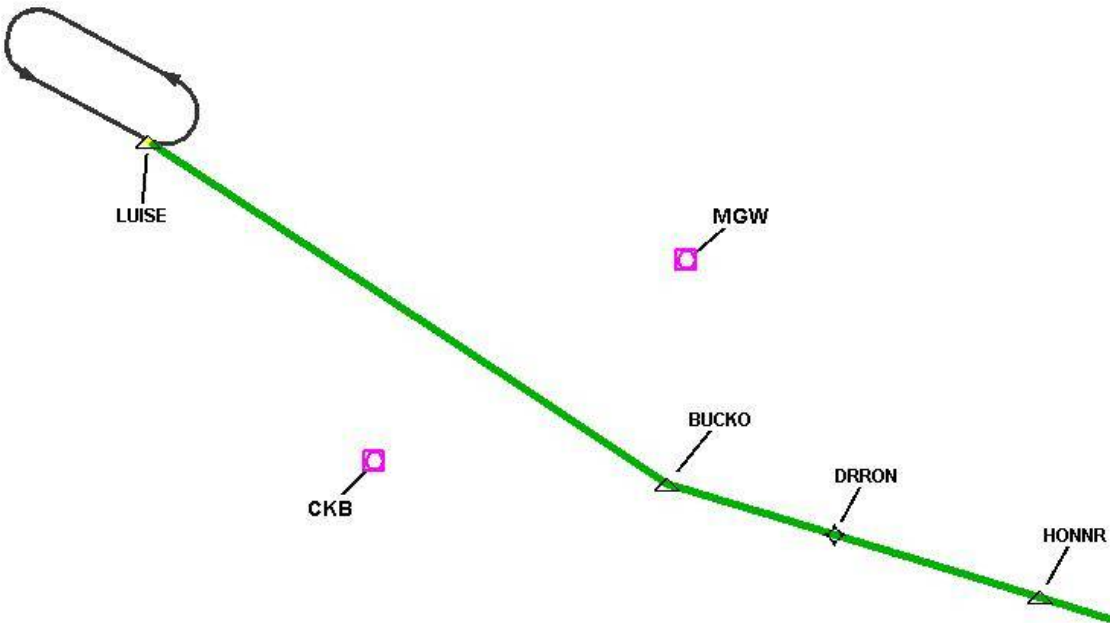
DME DME Assessment Results for FRDMM6 path ALWYZ_HEROO

Graphic Depiction 1



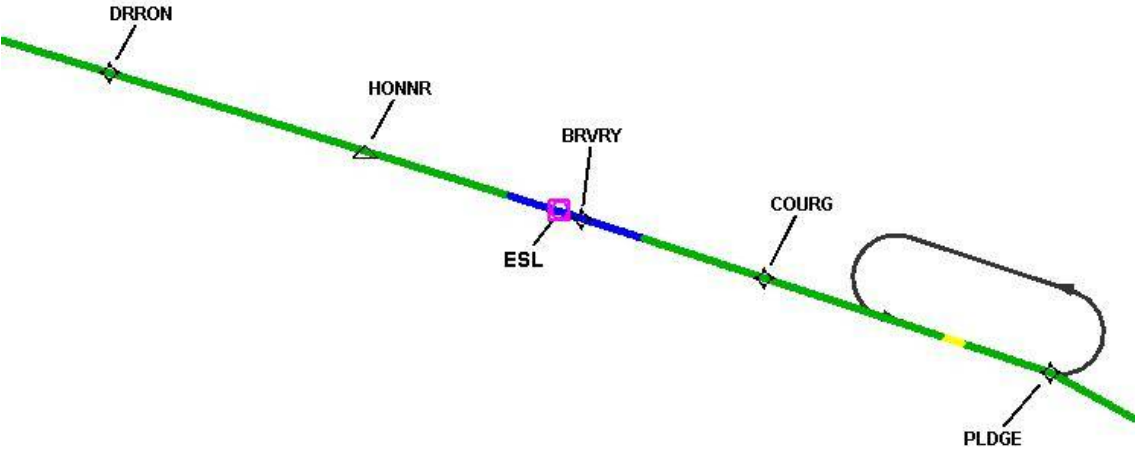
DME DME Assessment Results for FRDMM6 path ALWYZ_HEROO

Graphic Depiction 2



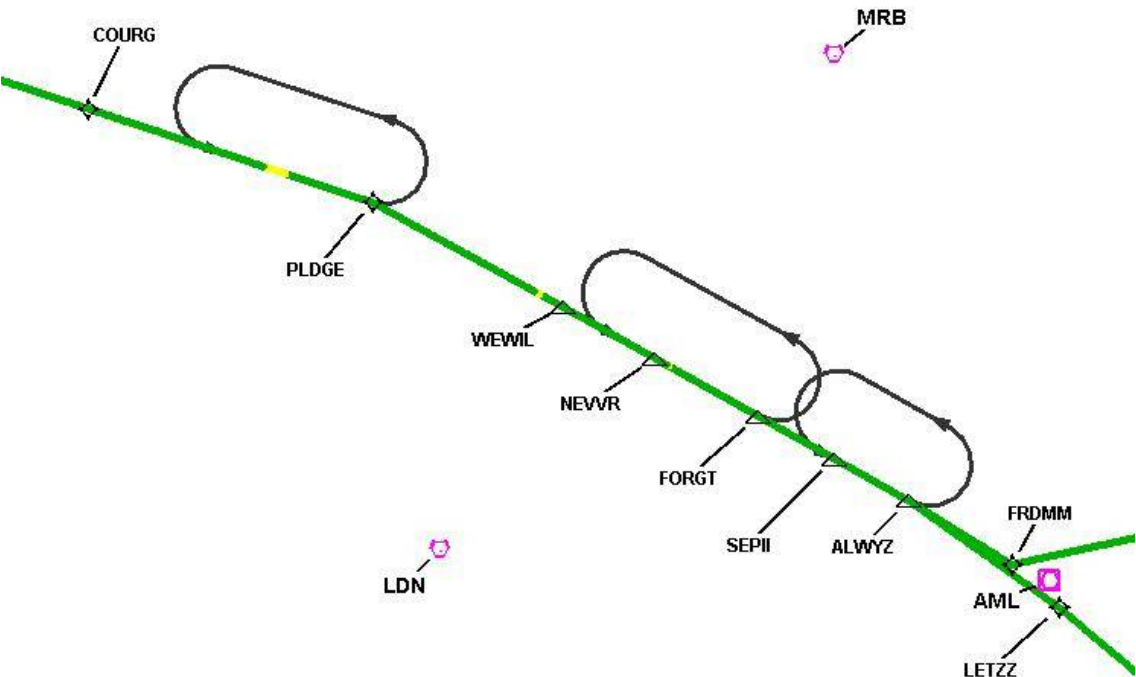
DME DME Assessment Results for FRDMM6 path ALWYZ_HEROO

Graphic Depiction 3



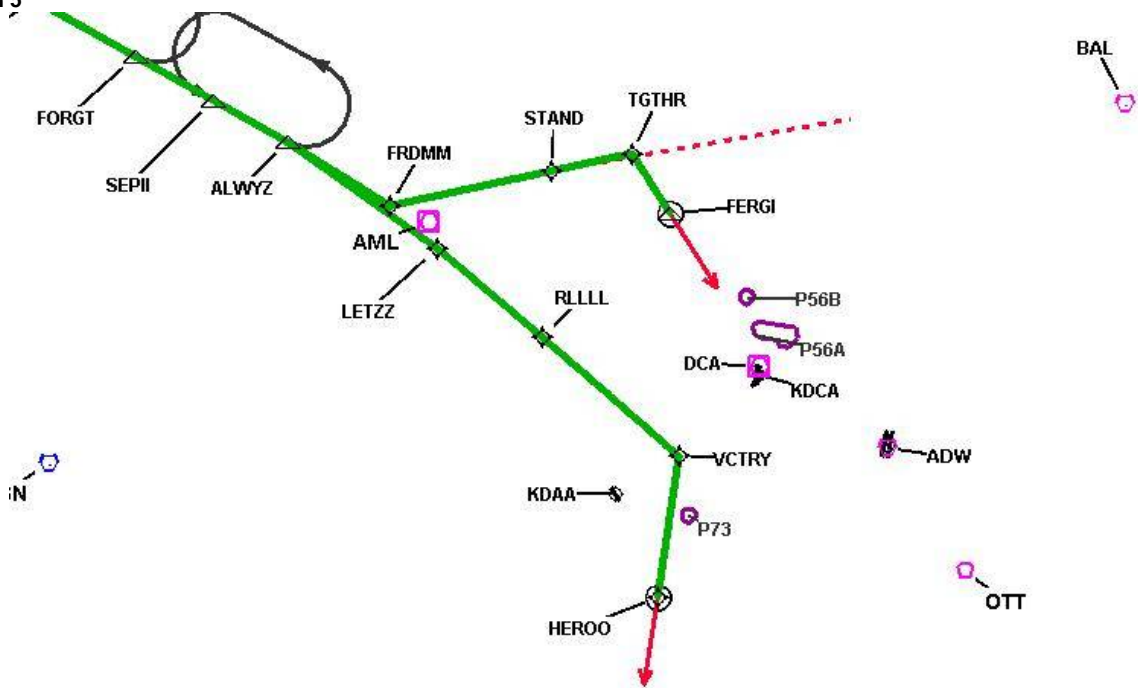
DME DME Assessment Results for FRDMM6 path ALWYZ_HEROO

Graphic Depiction 4



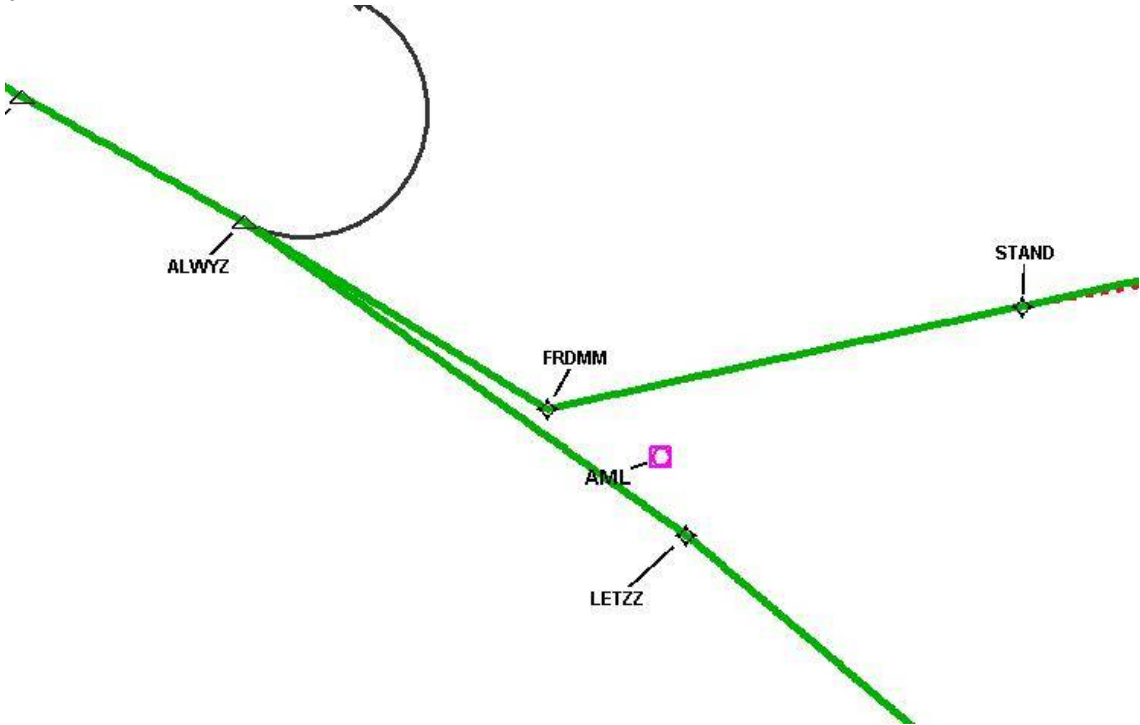
DME DME Assessment Results for FRDMM6 path ALWYZ_HEROO

Graphic Depiction 5



DME DME Assessment Results for FRDMM6 path ALWYZ_HEROO

Graphic Depiction 6



DME DME Assessment Results for FRDMM6 path ALWYZ_STAND

Results Summary

Flyability:	Completed
DME/DME:	Completed - No Critical DMEs
Name:	David C-CTR Cook
Project File:	C:\Users\David C-CTR Cook\Documents\TARGETS WORK\KDCA 5-16-2024 7.1.0\7.2.1 FILES DME_DME MITRE 3DEP\FRDMM6\COMBINED_KDCA_KADW FRDMM6 (RNAV) STAR_20231220.tgs
Output File:	C:\Users\David C-CTR Cook\Documents\TARGETS WORK\KDCA 5-16-2024 7.1.0\7.2.1 FILES DME_DME MITRE 3DEP\FRDMM6\KDCA [IFPA] FRDMM6 20231220_0732 EST\ALWYZ_STAND\KDCA FRDMM6 RNAV STAR ALWYZ STAND 20231220_0732 EST.pdf
Procedure Name:	FRDMM6
Software: DmeDmePlugin:	7.2.1
Date/Time:	12/20/2023 07:32 EST
Databases:	MITRE 3DEP 3 arcsec

Failures

No Failures

Warnings

No Warnings

Informational

No Informational

Notes For Flight Check

None

Flight Plan

Name	Type	Lat/Lon	Altitude (ft)	VNAV Mode	Ground Speed (kts)	Turn Type	Leg Type
ALWYZ	WP	N38° 59' 00.6600", W077° 39' 16.5400"	8000	VNAV	250	FLY_BY	TF
FRDMM	WP	N38° 56' 34.5400", W077° 31' 01.3900"	8000	VNAV	240	FLY_BY	TF
STAND	WP	N39° 00' 16.1700", W077° 19' 57.8400"	8000	VNAV	240	FLY_BY	TF

Flyability

Flight Type:	RNAV_STAR
Selected Airport:	KDCA [IFPA]
Climb Gradient:	None assigned
Speeds:	200 Ground Speed to 11000 FT
	240 Ground Speed to 18000 FT
	260 Ground Speed to 24000 FT
	340 Ground Speed above 24000 FT
Descent During a Turn:	Allowed
VNAV Mode:	Flight Plan

DME DME Assessment Results for FRDMM6 path ALWYZ_STAND

DME/DME	
RNP:	RNP 2
Flight Mode:	Manual
Line of Sight (DTED Level 0 Max):	Evaluated
Inertial Drift:	Enabled
Initial Drift:	0.558 NM
INS Drift Rate:	8.0 NM/Hour
Range Mode:	OSV
RNP Edges:	Evaluated
Min DME Range:	3.0 NM
DME Types:	DME, VOR-DME, VORTAC, TACAN
DME Include Angles:	30 to 150
Critical DMEs:	Allowed
DoD Facilities:	Not included
Foreign Facilities:	Not included
High DMEs:	Included
Low DMEs:	Included
Terminal DMEs:	Included
Flight Check DMEs:	Not selected
Higher Altitudes:	Not Evaluated
Near Maximum Altitude:	Not Evaluated
Automatic ESVs:	Not enabled
Disabled DMEs:	FKN

DME/DME (Continued)										
DMEs Used										
#	Name	Lat/Lon	MAGVAR	Range	Type	Source	Critical	Status	Time	Distance
1	MRB	N39° 23' 08.0600", W077° 50' 54.0820"	7.0 W	40	L	IFPA	NO	Enabled	100 %	100 %
2	LDN	N38° 51' 15.8344", W078° 12' 20.0559"	6.0 W	40	L	IFPA	NO	Enabled	82.5 %	82.8 %
3	OTT	N38° 42' 21.1352", W076° 44' 41.0854"	10.0 W	40	L	IFPA	NO	Enabled	47.4 %	46.8 %
4	BAL	N39° 10' 15.8283", W076° 39' 40.5225"	11.0 W	40	L	IFPA	NO	Enabled	41.6 %	40.9 %
5	CSN	N38° 38' 28.3277", W077° 51' 55.7979"	6.0 W	130	H	IFPA	NO	Enabled	100 %	100 %
6	AML	N38° 56' 04.5329", W077° 28' 00.1263"	8.0 W	40	L	IFPA	NO	Enabled	55.2 %	55.3 %
7	ADW	N38° 48' 25.9900", W076° 51' 58.5200"	10.0 W	40	L	IFPA	NO	Enabled	100 %	100 %
8	DCA	N38° 51' 34.0300", W077° 02' 11.1700"	9.0 W	40	L	IFPA	NO	Enabled	100 %	100 %
9	EMI	N39° 29' 42.0266", W076° 58' 42.8591"	8.0 W	130	H	IFPA	NO	Enabled	30 %	29.5 %
10	FKN	N36° 42' 51.2443", W077° 00' 44.5488"	9.0 W	40	L	IFPA	NO	Disabled		

Flight Check DME Selection						
Distance [NM]	Selected DMEs					Alternate
0.0	MRB	LDN	AML	CSN	ADW	DCA
4.3	MRB	LDN	CSN	ADW	DCA	
13.5	MRB	CSN	AML	OTT	EMI	DCA

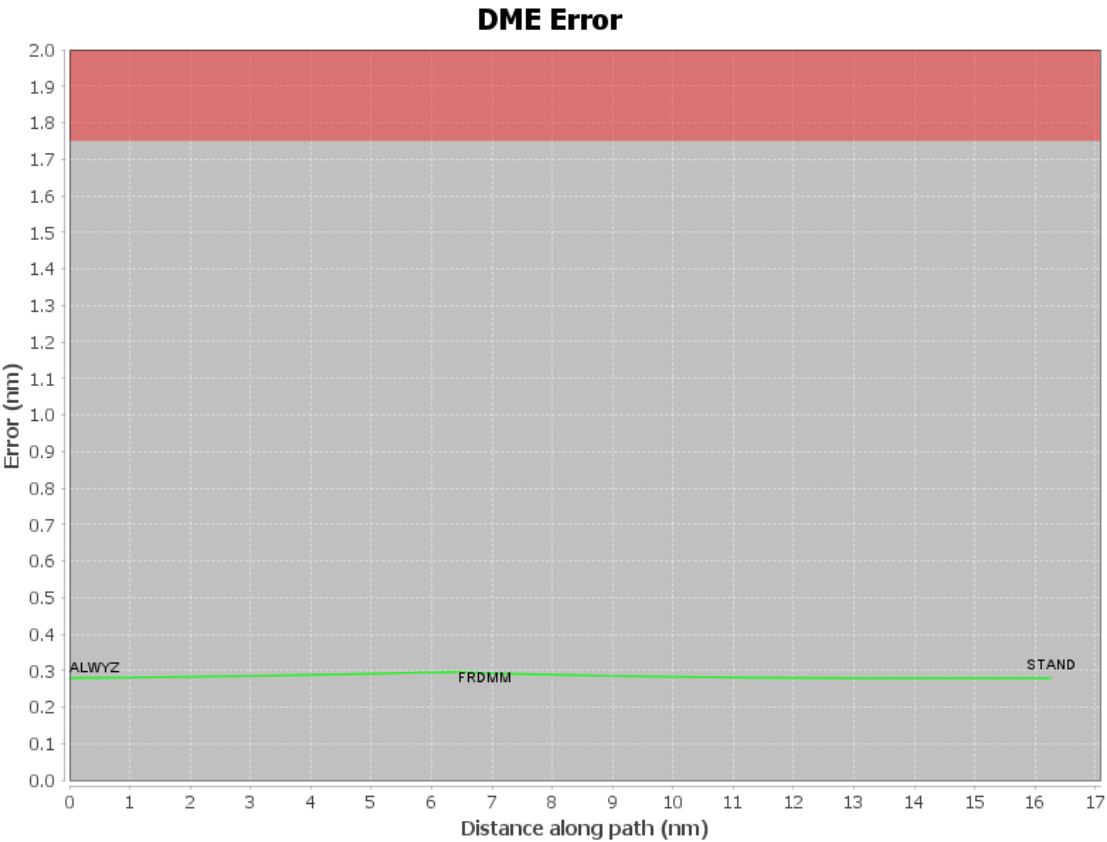
Inertial Drift Segments			
#	Start Location	End Location	Length [NM]

DME DME Assessment Results for FRDMM6 path ALWYZ_STAND

Available DMEs by Waypoints			
Waypoint Before	Waypoint After	DME List	Suggested DMEs
ALWYZ	FRDMM	AML, DCA, ADW, LDN, MRB, OTT, CSN	
FRDMM	STAND	EMI, AML, DCA, ADW, LDN, MRB, BAL, OTT, CSN	

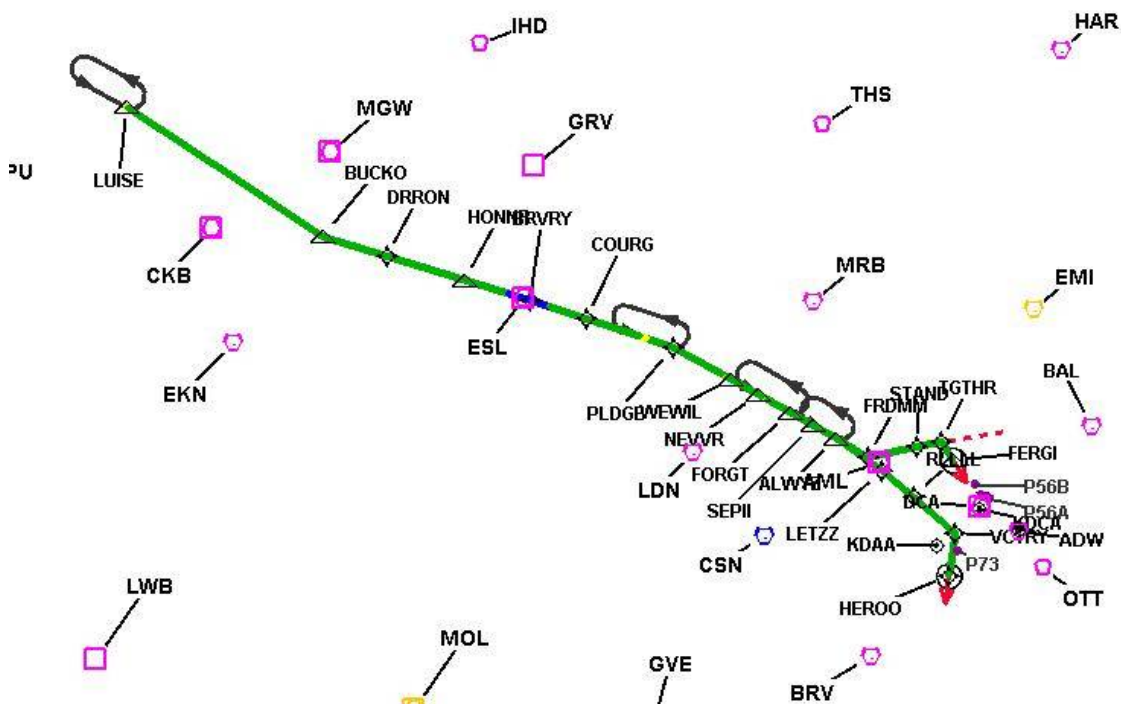
User Data Files								
#	File Name							
None								
User DMEs								
#	Name	Lat/Lon	MAGVAR	Range	Elevation [ft]	Frequency	Replaces	Status
None								

DME DME Assessment Results for FRDMM6 path ALWYZ_STAND



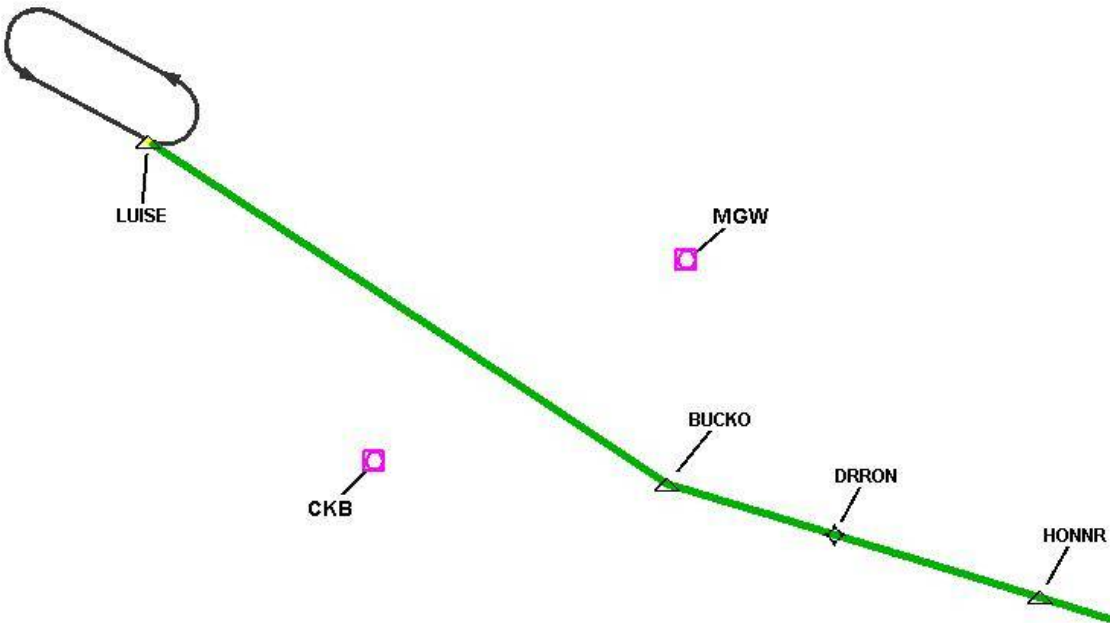
DME DME Assessment Results for FRDMM6 path ALWYZ_STAND

Graphic Depiction 1



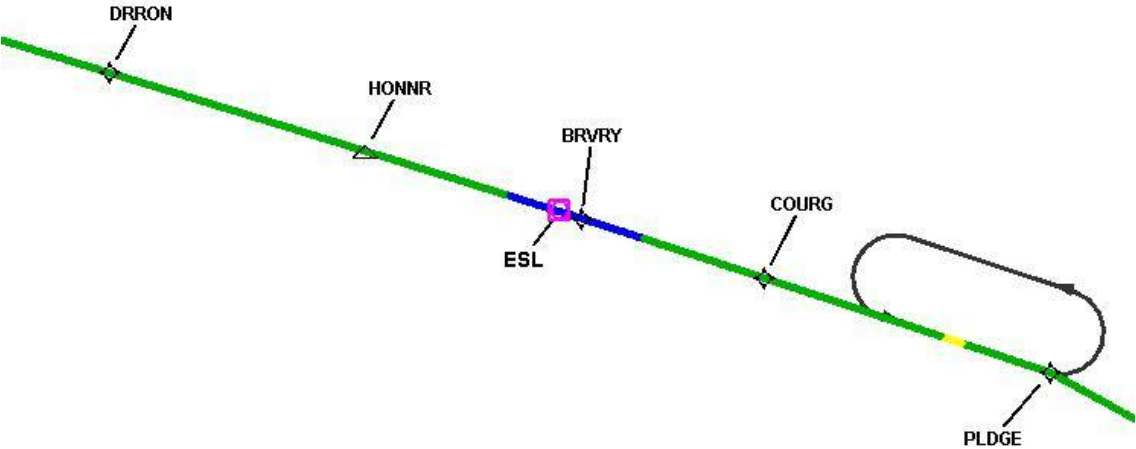
DME DME Assessment Results for FRDMM6 path ALWYZ_STAND

Graphic Depiction 2



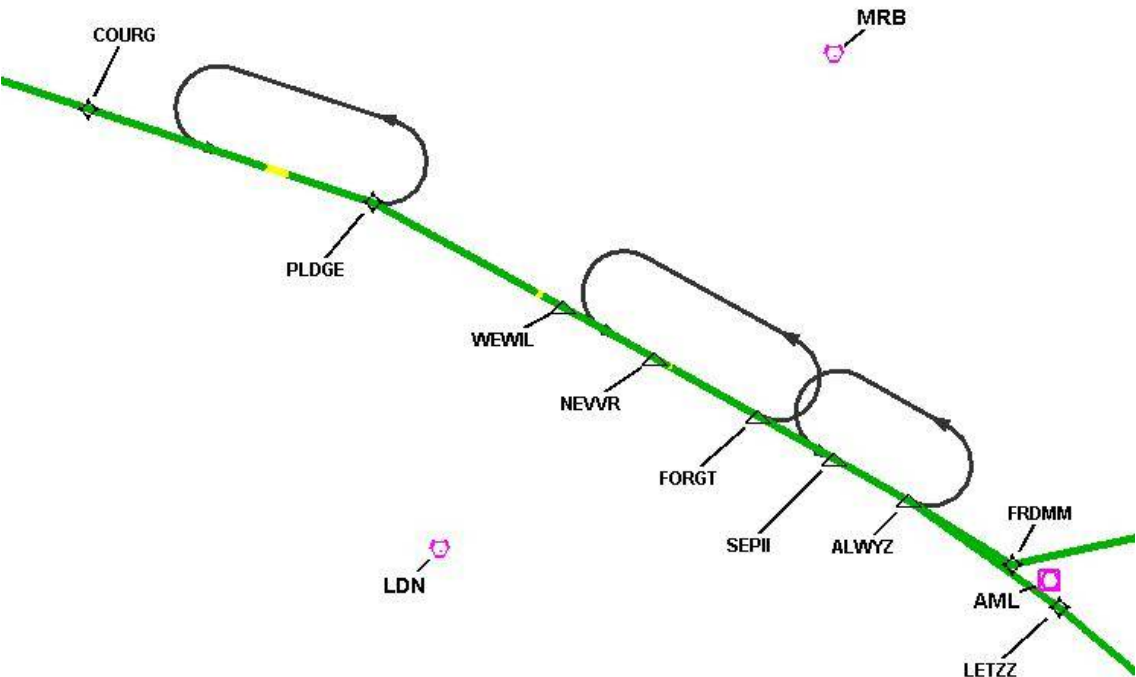
DME DME Assessment Results for FRDMM6 path ALWYZ_STAND

Graphic Depiction 3

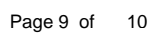


DME DME Assessment Results for FRDMM6 path ALWYZ_STAND

Graphic Depiction 4

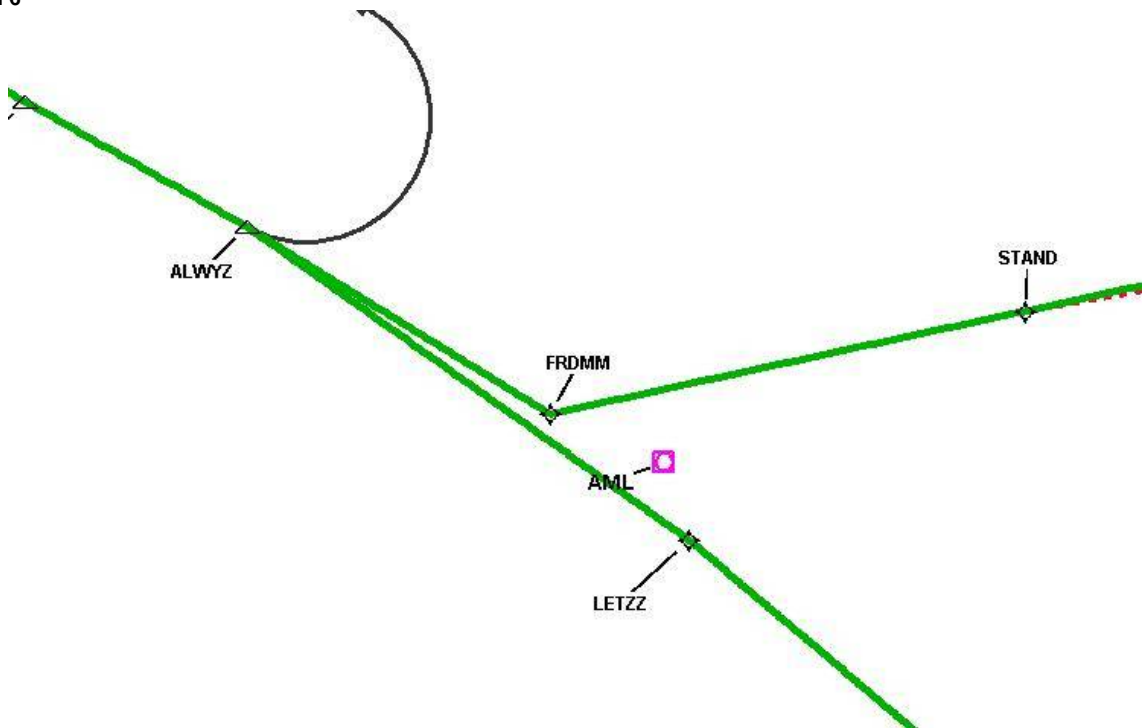


Graphic Depiction 5



DME DME Assessment Results for FRDMM6 path ALWYZ_STAND

Graphic Depiction 6



DME DME Assessment Results for FRDMM6 path LETZZ_LUISE

Results Summary

Flyability:	Completed
DME/DME:	Completed - No Critical DMEs
Name:	David C-CTR Cook
Project File:	C:\Users\David C-CTR Cook\Documents\TARGETS WORK\KDCA 5-16-2024 7.1.0\7.2.1 FILES DME_DME MITRE 3DEP\FRDMM6\COMBINED_KDCA_KADW FRDMM6 (RNAV) STAR_20231220.tgs
Output File:	C:\Users\David C-CTR Cook\Documents\TARGETS WORK\KDCA 5-16-2024 7.1.0\7.2.1 FILES DME_DME MITRE 3DEP\FRDMM6\KDCA [IFPA] FRDMM6 20231220_0732 EST\LETZZ_LUISE\KDCA FRDMM6 RNAV STAR LETZZ_LUISE 20231220_0732 EST.pdf
Procedure Name:	FRDMM6
Software: DmeDmePlugin:	7.2.1
Date/Time:	12/20/2023 07:32 EST
Databases:	MITRE 3DEP 3 arcsec

Failures

No Failures

Warnings

No Warnings

Informational

No Informational

Notes For Flight Check

None

Flight Plan

Name	Type	Lat/Lon	Altitude (ft)	VNAV Mode	Ground Speed (kts)	Turn Type	Leg Type
LETZZ	WP	N38° 54' 42.3600", W077° 27' 02.4000"	8000	VNAV	250	FLY_BY	TF
ALWYZ	WP	N38° 59' 00.6600", W077° 39' 16.5400"	8000	VNAV	250	FLY_BY	TF
SEPII	WP	N39° 00' 33.1200", W077° 45' 13.7400"	8000	VNAV	250	FLY_BY	TF
FORGT	WP	N39° 02' 07.3400", W077° 51' 19.2500"	8000	VNAV	250	FLY_BY	TF
NEVVR	WP	N39° 04' 13.2900", W077° 59' 30.1700"	8000	VNAV	280	FLY_BY	TF
WEWIL	WP	N39° 06' 05.9800", W078° 06' 51.7600"	8000	VNAV	280	FLY_BY	TF
PLDGE	WP	N39° 09' 51.3300", W078° 21' 58.7200"	8000	VNAV	280	FLY_BY	TF
COURG	WP	N39° 12' 01.1400", W078° 43' 44.5200"	8000	VNAV	280	FLY_BY	TF
BRVRY	WP	N39° 13' 22.6800", W078° 57' 47.1800"	8000	VNAV	280	FLY_BY	TF
HONNR	WP	N39° 14' 46.5900", W079° 14' 08.9100"	8000	VNAV	280	FLY_BY	TF
DRRON	WP	N39° 16' 22.1200", W079° 33' 35.8600"	8000	VNAV	280	FLY_BY	TF
BUCKO	WP	N39° 17' 37.8200", W079° 49' 30.1000"	8000	VNAV	280	FLY_BY	TF
LUISE	WP	N39° 34' 27.3900", W080° 41' 54.6500"	8000	VNAV	280	FLY_BY	TF

DME DME Assessment Results for FRDMM6 path LETZZ_LUISE

Flyability	
Flight Type:	RNAV_STAR
Selected Airport:	KDCA [IFPA]
Climb Gradient:	None assigned
Speeds:	200 Ground Speed to 11000 FT
	240 Ground Speed to 18000 FT
	260 Ground Speed to 24000 FT
	340 Ground Speed above 24000 FT
Descent During a Turn:	Allowed
VNAV Mode:	Flight Plan

DME/DME	
RNP:	RNP 2
Flight Mode:	Manual
Line of Sight (DTED Level 0 Max):	Evaluated
Inertial Drift:	Enabled
Initial Drift:	0.558 NM
INS Drift Rate:	8.0 NM/Hour
Range Mode:	OSV
RNP Edges:	Evaluated
Min DME Range:	3.0 NM
DME Types:	DME, VOR-DME, VORTAC, TACAN
DME Include Angles:	30 to 150
Critical DMEs:	Allowed
DoD Facilities:	Not included
Foreign Facilities:	Not included
High DMEs:	Included
Low DMEs:	Included
Terminal DMEs:	Included
Flight Check DMEs:	Not selected
Higher Altitudes:	Not Evaluated
Near Maximum Altitude:	Not Evaluated
Automatic ESVs:	Not enabled
Disabled DMEs:	FKN

DME DME Assessment Results for FRDMM6 path LETZZ_LUISE

DME/DME (Continued)										
DMEs Used										
#	Name	Lat/Lon	MAGVAR	Range	Type	Source	Critical	Status	Time	Distance
1	EKN	N38° 54' 51.9690", W080° 05' 57.3810"	7.0 W	40	L	IFPA	NO	Enabled	29.6 %	30.2 %
2	CSN	N38° 38' 28.3277", W077° 51' 55.7979"	6.0 W	130	H	IFPA	NO	Enabled	18.2 %	16.6 %
3	GRV	N39° 38' 06.1120", W079° 03' 01.9000"	-0.0 E	40	L	IFPA	NO	Enabled	30.4 %	31 %
4	ADW	N38° 48' 25.9900", W076° 51' 58.5200"	10.0 W	40	L	IFPA	NO	Enabled	8.2 %	7.5 %
5	MRB	N39° 23' 08.0600", W077° 50' 54.0820"	7.0 W	40	L	IFPA	NO	Enabled	37.8 %	36.6 %
6	OTT	N38° 42' 21.1352", W076° 44' 41.0854"	10.0 W	40	L	IFPA	NO	Enabled	3 %	2.7 %
7	LDN	N38° 51' 15.8344", W078° 12' 20.0559"	6.0 W	40	L	IFPA	NO	Enabled	37.8 %	36.6 %
8	CKB	N39° 15' 11.5841", W080° 16' 04.3018"	4.0 W	40	L	IFPA	NO	Enabled	38.2 %	38.9 %
9	JPU	N39° 26' 28.2493", W081° 22' 29.1377"	3.0 W	40	L	IFPA	NO	Enabled	4.1 %	4.2 %
10	AIR	N40° 00' 59.7814", W080° 49' 01.9382"	7.0 W	130	H	IFPA	NO	Enabled	9.2 %	9.4 %
11	MGW	N39° 33' 24.1749", W079° 51' 37.4843"	5.0 W	40	L	IFPA	NO	Enabled	45.4 %	46.3 %
12	BRV	N38° 20' 10.5264", W077° 21' 10.3159"	9.0 W	40	L	IFPA	NO	Enabled	2.3 %	2.1 %
13	ESL	N39° 13' 31.7740", W078° 59' 22.2000"	6.0 W	40	L	IFPA	NO	Enabled	43.3 %	44.2 %
14	AML	N38° 56' 04.5329", W077° 28' 00.1263"	8.0 W	40	L	IFPA	NO	Enabled	23.1 %	22.1 %
15	DCA	N38° 51' 34.0300", W077° 02' 11.1700"	9.0 W	40	L	IFPA	NO	Enabled	14.1 %	12.9 %
16	FKN	N36° 42' 51.2443", W077° 00' 44.5488"	9.0 W	40	L	IFPA	NO	Disabled		

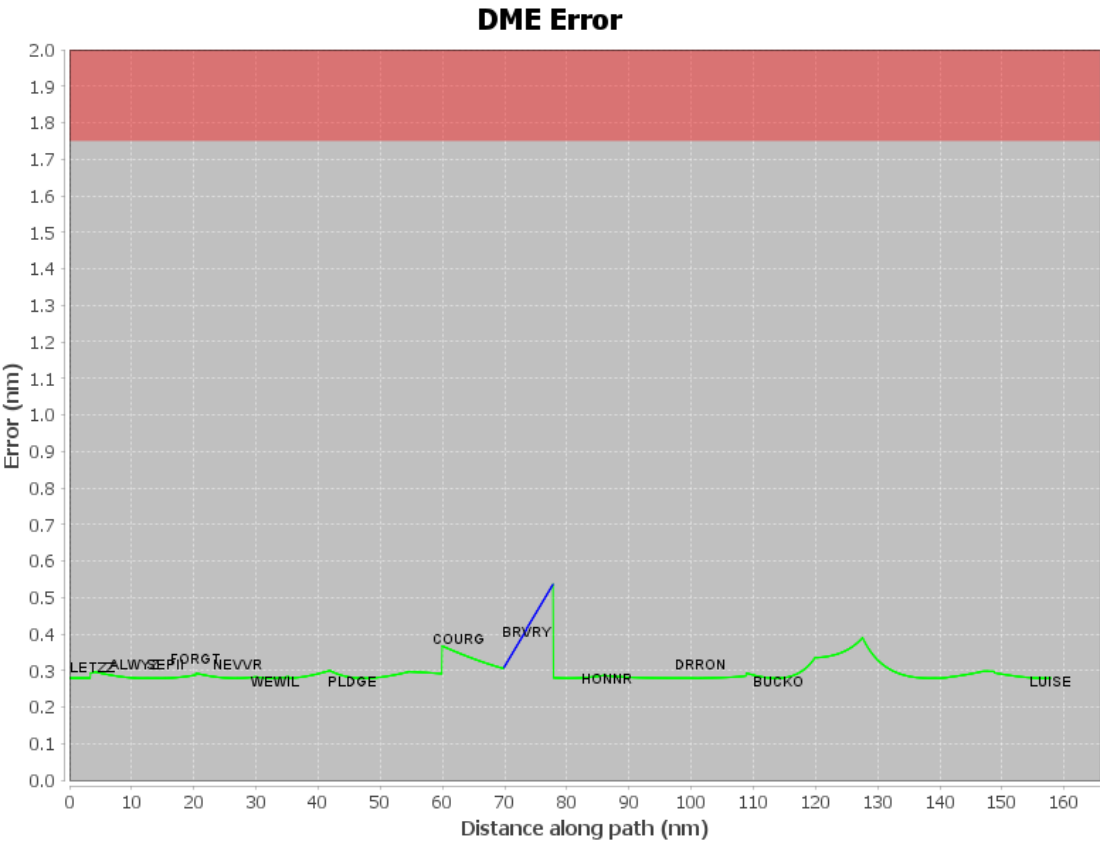
DME DME Assessment Results for FRDMM6 path LETZZ_LUISE

Flight Check DME Selection						
Distance [NM]	Selected DMEs					Alternate
0.0	LDN	BRV	MRB	CSN	DCA	ADW
3.4	MRB	CSN	LDN	OTT	ADW	DCA
4.4	MRB	LDN	CSN	ADW	DCA	
11.8	MRB	LDN	AML	CSN	DCA	
20.4	AML	CSN	MRB	LDN		
26.2	AML	MRB	LDN			
34.6	LDN	ESL	AML	MRB		
34.9	AML	LDN	MRB			
35.3	LDN	ESL	AML	MRB		
41.1	LDN	ESL	MRB			
50.6	MRB	LDN	GRV	ESL		
51.9	MRB	LDN				
52.9	MRB	LDN	GRV	ESL		
57.9	ESL	GRV				
69.9						
77.8	ESL	GRV				
82.1	ESL	GRV	MGW			
95.0	MGW	GRV	ESL	CKB		
95.7	MGW	GRV	EKN	ESL	CKB	
108.9	CKB	MGW	ESL	EKN		
114.0	CKB	MGW	EKN			
122.3	EKN	CKB				
124.8	EKN	CKB	MGW			
130.7	EKN	MGW				
132.0	EKN	MGW	CKB			
143.0	EKN	MGW	CKB	AIR		
143.5	CKB	MGW	AIR			
151.2	JPU	AIR	MGW	CKB		

Inertial Drift Segments			
#	Start Location	End Location	Length [NM]
1	N39° 12' 55.8789", W078° 53' 08.2115"	N39° 13' 51.4162", W079° 03' 20.3003"	7.9709

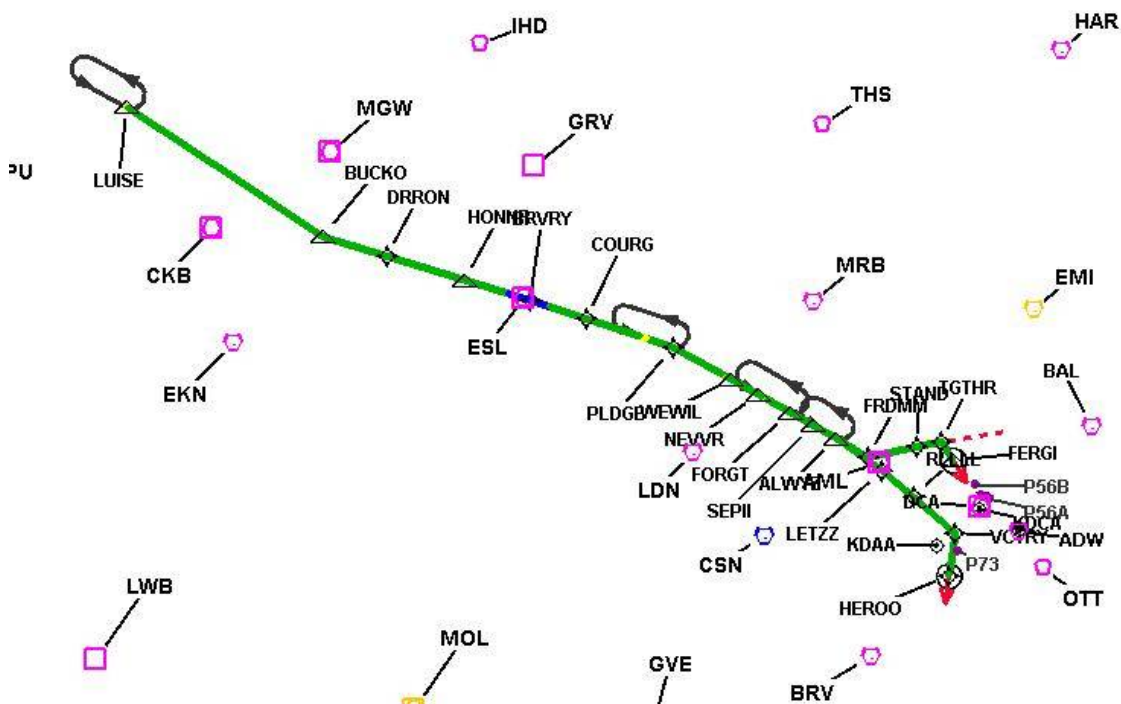
Available DMEs by Waypoints			
Waypoint Before	Waypoint After	DME List	Suggested DMEs
LETZZ	ALWYZ	AML, DCA, ADW, BRV, LDN, MRB, OTT, CSN	
ALWYZ	SEPII	AML, DCA, ADW, LDN, MRB, CSN	
SEPII	FORGT	AML, DCA, LDN, MRB, CSN	
FORGT	NEVVR	AML, LDN, MRB, CSN	
NEVVR	WEWIL	AML, LDN, MRB	
WEWIL	PLDGE	AML, LDN, MRB, ESL	
PLDGE	COURG	LDN, GRV, MRB, ESL	
COURG	BRVRY	GRV, ESL	
BRVRY	HONNR	GRV, MGW, ESL	
HONNR	DRRON	EKN, GRV, CKB, MGW, ESL	
DRRON	BUCKO	EKN, GRV, CKB, MGW, ESL	
BUCKO	LUISE	EKN, AIR, CKB, MGW, JPU	

User Data Files								
#	File Name							
None								
User DMEs								
#	Name	Lat/Lon	MAGVAR	Range	Elevation [ft]	Frequency	Replaces	Status
None								



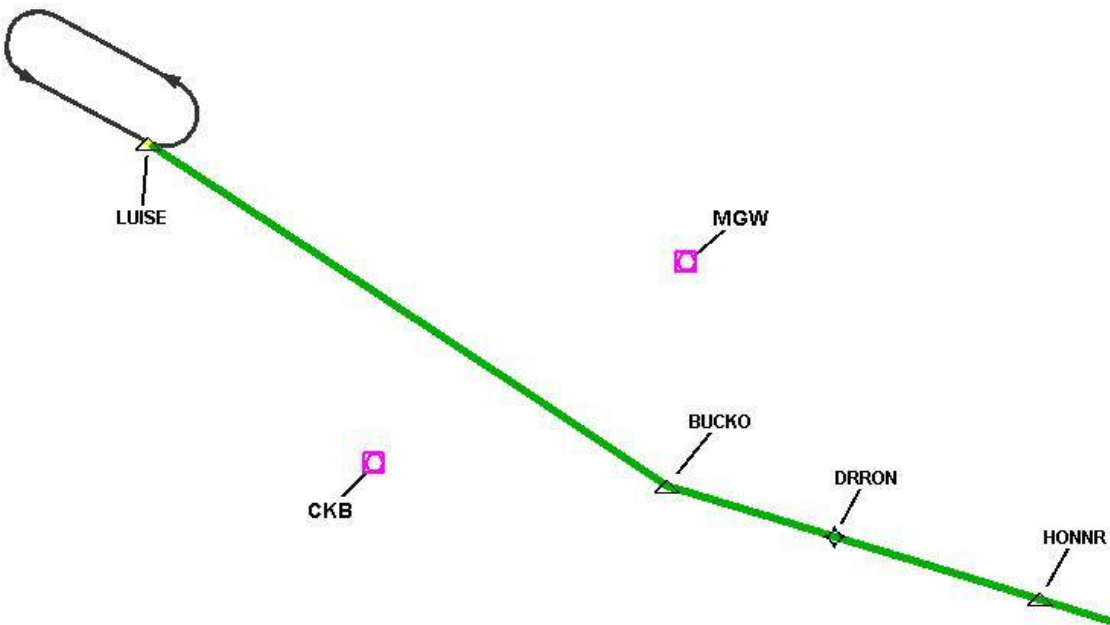
DME DME Assessment Results for FRDMM6 path LETZZ_LUISE

Graphic Depiction 1

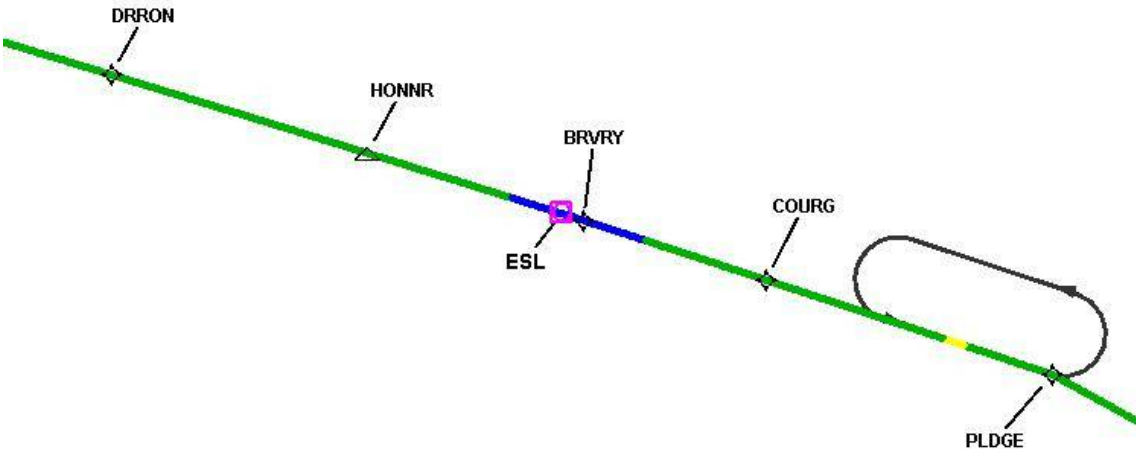


DME DME Assessment Results for FRDMM6 path LETZZ_LUISE

Graphic Depiction 2

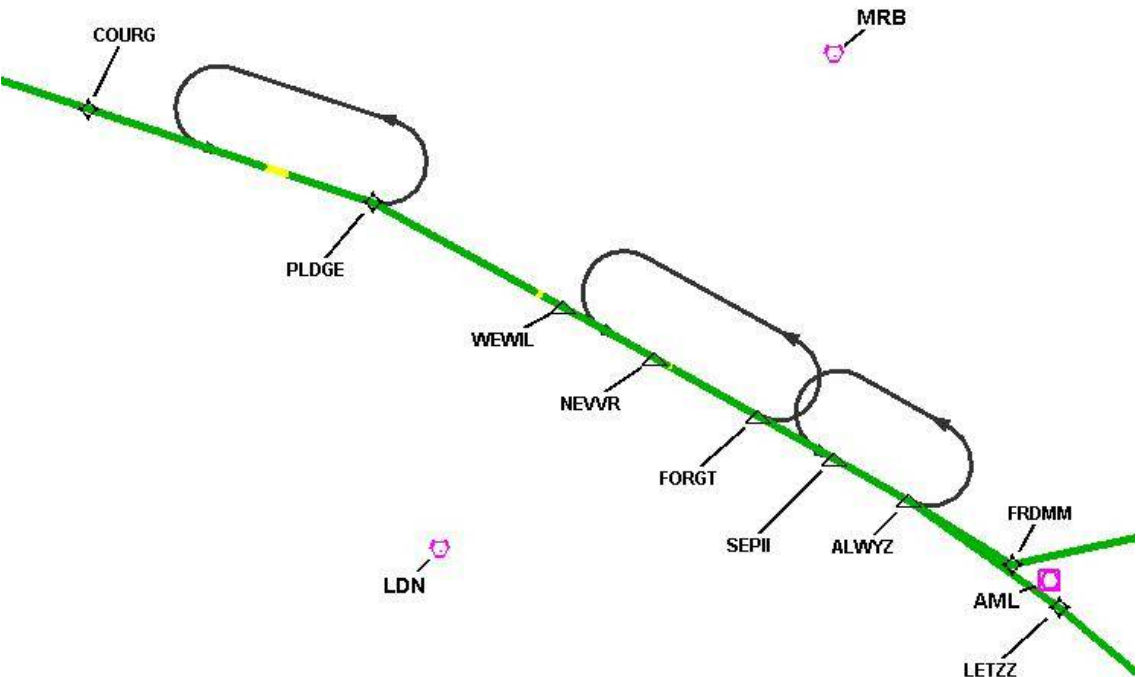


Graphic Depiction 3



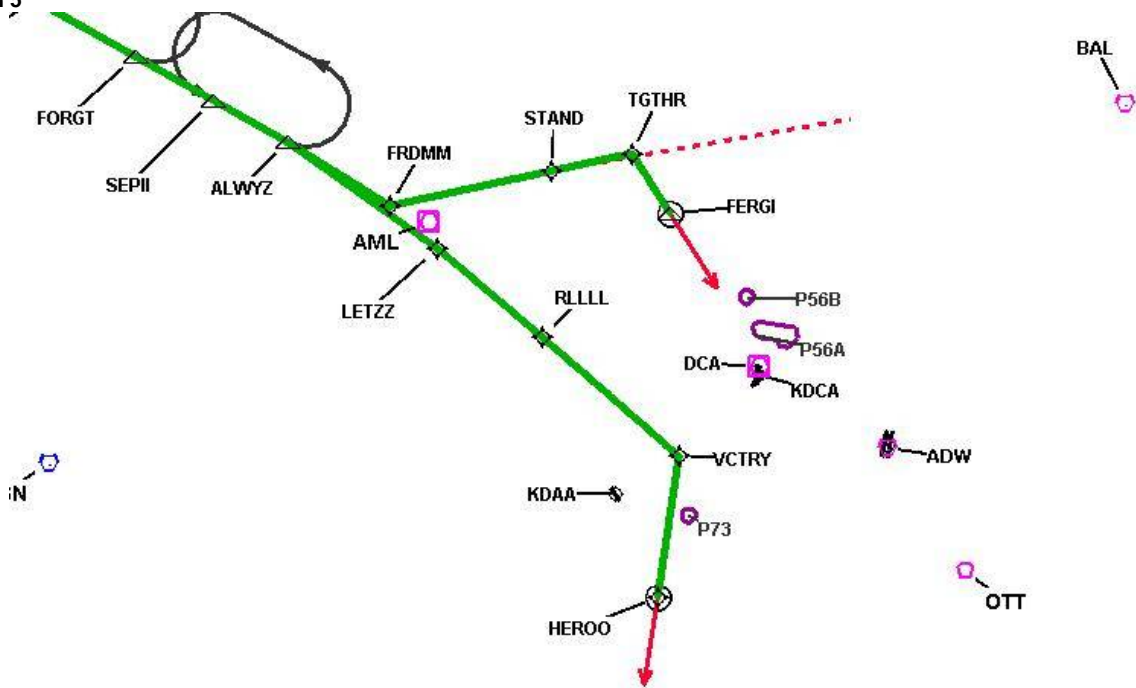
DME DME Assessment Results for FRDMM6 path LETZZ_LUISE

Graphic Depiction 4



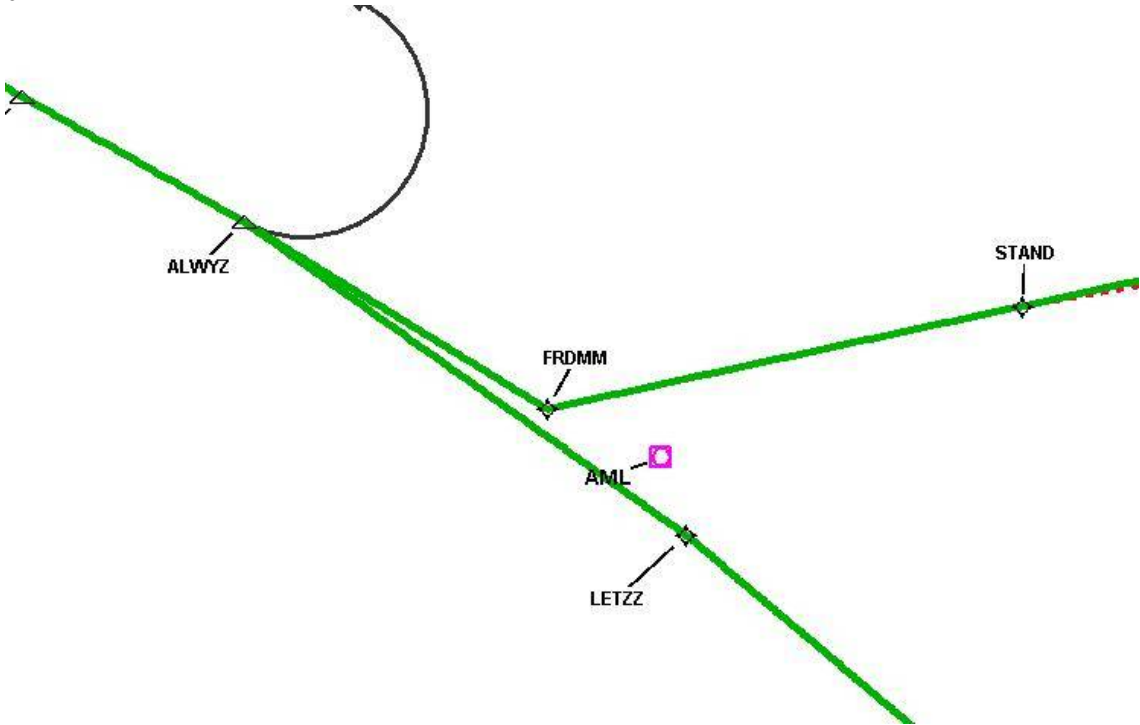
DME DME Assessment Results for FRDMM6 path LETZZ_LUISE

Graphic Depiction 5



DME DME Assessment Results for FRDMM6 path LETZZ_LUISE

Graphic Depiction 6



DME DME Assessment Results for FRDMM6 path LUISE_FERGI

Results Summary

Flyability:	Completed
DME/DME:	Completed - No Critical DMEs
Name:	David C-CTR Cook
Project File:	C:\Users\David C-CTR Cook\Documents\TARGETS WORK\KDCA 5-16-2024 7.1.0\7.2.1 FILES DME_DME MITRE 3DEP\FRDMM6\COMBINED_KDCA_KADW FRDMM6 (RNAV) STAR_20231220.tgs
Output File:	C:\Users\David C-CTR Cook\Documents\TARGETS WORK\KDCA 5-16-2024 7.1.0\7.2.1 FILES DME_DME MITRE 3DEP\FRDMM6\KDCA [IFPA] FRDMM6 20231220_0732 EST\LUISE_FERGI\KDCA FRDMM6 RNAV STAR LUISE FERG 20231220_0732 EST.pdf
Procedure Name:	FRDMM6
Software: DmeDmePlugin:	7.2.1
Date/Time:	12/20/2023 07:32 EST
Databases:	MITRE 3DEP 3 arcsec

Failures

No Failures

Warnings

No Warnings

Informational

No Informational

Notes For Flight Check

None

Flight Plan

Name	Type	Lat/Lon	Altitude (ft)	VNAV Mode	Ground Speed (kts)	Turn Type	Leg Type
LUISE	WP	N39° 34' 27.3900", W080° 41' 54.6500"	8000	VNAV	280	FLY_BY	TF
BUCKO	WP	N39° 17' 37.8200", W079° 49' 30.1000"	8000	VNAV	280	FLY_BY	TF
DRRON	WP	N39° 16' 22.1200", W079° 33' 35.8600"	8000	VNAV	280	FLY_BY	TF
HONNR	WP	N39° 14' 46.5900", W079° 14' 08.9100"	8000	VNAV	280	FLY_BY	TF
BRVRY	WP	N39° 13' 22.6800", W078° 57' 47.1800"	8000	VNAV	280	FLY_BY	TF
COURG	WP	N39° 12' 01.1400", W078° 43' 44.5200"	8000	VNAV	280	FLY_BY	TF
PLDGE	WP	N39° 09' 51.3300", W078° 21' 58.7200"	8000	VNAV	280	FLY_BY	TF
WEWIL	WP	N39° 06' 05.9800", W078° 06' 51.7600"	8000	VNAV	280	FLY_BY	TF
NEVVR	WP	N39° 04' 13.2900", W077° 59' 30.1700"	8000	VNAV	280	FLY_BY	TF
FORGT	WP	N39° 02' 07.3400", W077° 51' 19.2500"	8000	VNAV	250	FLY_BY	TF
SEPII	WP	N39° 00' 33.1200", W077° 45' 13.7400"	8000	VNAV	250	FLY_BY	TF
ALWYZ	WP	N38° 59' 00.6600", W077° 39' 16.5400"	8000	VNAV	250	FLY_BY	TF
FRDMM	WP	N38° 56' 34.5400", W077° 31' 01.3900"	8000	VNAV	240	FLY_BY	TF
STAND	WP	N39° 00' 16.1700", W077° 19' 57.8400"	8000	VNAV	240	FLY_BY	TF
TGTHR	WP	N39° 02' 08.4100", W077° 14' 23.6900"	8000	VNAV	240	FLY_BY	TF
FERGI	WP	N38° 59' 12.1600", W077° 10' 50.1800"	8000	VNAV	240	FLY_OVER	TF

DME DME Assessment Results for FRDMM6 path LUISE_FERGI

Flyability	
Flight Type:	RNAV_STAR
Selected Airport:	KDCA [IFPA]
Climb Gradient:	None assigned
Speeds:	200 Ground Speed to 11000 FT
	240 Ground Speed to 18000 FT
	260 Ground Speed to 24000 FT
	340 Ground Speed above 24000 FT
Descent During a Turn:	Allowed
VNAV Mode:	Flight Plan

DME/DME	
RNP:	RNP 2
Flight Mode:	Manual
Line of Sight (DTED Level 0 Max):	Evaluated
Inertial Drift:	Enabled
Initial Drift:	0.558 NM
INS Drift Rate:	8.0 NM/Hour
Range Mode:	OSV
RNP Edges:	Evaluated
Min DME Range:	3.0 NM
DME Types:	DME, VOR-DME, VORTAC, TACAN
DME Include Angles:	30 to 150
Critical DMEs:	Allowed
DoD Facilities:	Not included
Foreign Facilities:	Not included
High DMEs:	Included
Low DMEs:	Included
Terminal DMEs:	Included
Flight Check DMEs:	Not selected
Higher Altitudes:	Not Evaluated
Near Maximum Altitude:	Not Evaluated
Automatic ESVs:	Not enabled
Disabled DMEs:	FKN

DME DME Assessment Results for FRDMM6 path LUISE_FERGI

DME/DME (Continued)										
DMEs Used										
#	Name	Lat/Lon	MAGVAR	Range	Type	Source	Critical	Status	Time	Distance
1	EKN	N38° 54' 51.9690", W080° 05' 57.3810"	7.0 W	40	L	IFPA	NO	Enabled	26.9 %	27.7 %
2	GRV	N39° 38' 06.1120", W079° 03' 01.9000"	-0.0 E	40	L	IFPA	NO	Enabled	27.6 %	28.4 %
3	CSN	N38° 38' 28.3277", W077° 51' 55.7979"	6.0 W	130	H	IFPA	NO	Enabled	23.1 %	21.3 %
4	ADW	N38° 48' 25.9900", W076° 51' 58.5200"	10.0 W	40	L	IFPA	NO	Enabled	17.1 %	15.3 %
5	MRB	N39° 23' 08.0600", W077° 50' 54.0820"	7.0 W	40	L	IFPA	NO	Enabled	43.6 %	41.9 %
6	CKB	N39° 15' 11.5841", W080° 16' 04.3018"	4.0 W	40	L	IFPA	NO	Enabled	34.6 %	35.7 %
7	JPU	N39° 26' 28.2493", W081° 22' 29.1377"	3.0 W	40	L	IFPA	NO	Enabled	3.7 %	3.8 %
8	LDN	N38° 51' 15.8344", W078° 12' 20.0559"	6.0 W	40	L	IFPA	NO	Enabled	36 %	35.3 %
9	OTT	N38° 42' 21.1352", W076° 44' 41.0854"	10.0 W	40	L	IFPA	NO	Enabled	10.7 %	9.5 %
10	AIR	N40° 00' 59.7814", W080° 49' 01.9382"	7.0 W	130	H	IFPA	NO	Enabled	8.4 %	8.6 %
11	MGW	N39° 33' 24.1749", W079° 51' 37.4843"	5.0 W	40	L	IFPA	NO	Enabled	41.2 %	42.4 %
12	BAL	N39° 10' 15.8283", W076° 39' 40.5225"	11.0 W	40	L	IFPA	NO	Enabled	10.1 %	8.9 %
13	ESL	N39° 13' 31.7740", W078° 59' 22.2000"	6.0 W	40	L	IFPA	NO	Enabled	39.3 %	40.4 %
14	AML	N38° 56' 04.5329", W077° 28' 00.1263"	8.0 W	40	L	IFPA	NO	Enabled	29.4 %	28 %
15	DCA	N38° 51' 34.0300", W077° 02' 11.1700"	9.0 W	40	L	IFPA	NO	Enabled	22.5 %	20.2 %
16	EMI	N39° 29' 42.0266", W076° 58' 42.8591"	8.0 W	130	H	IFPA	NO	Enabled	8.9 %	7.9 %
17	FKN	N36° 42' 51.2443", W077° 00' 44.5488"	9.0 W	40	L	IFPA	NO	Disabled		

DME DME Assessment Results for FRDMM6 path LUISE_FERGI

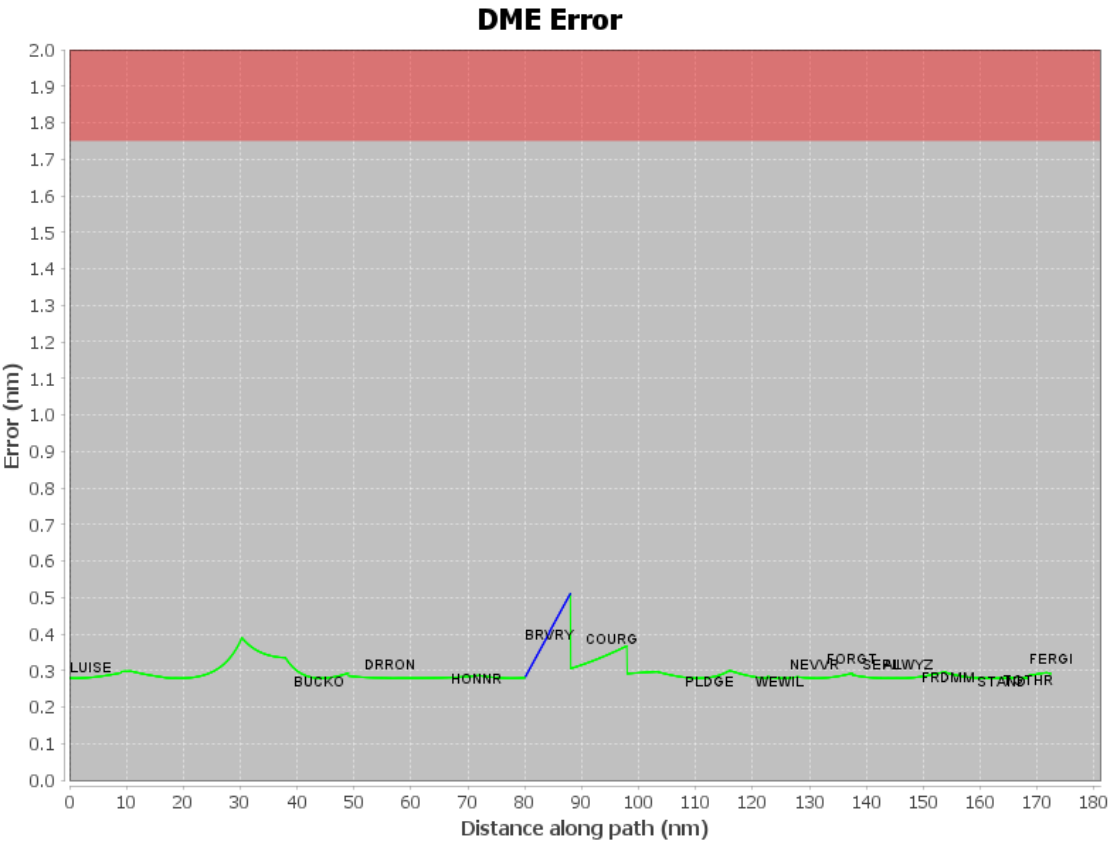
Flight Check DME Selection						
Distance [NM]	Selected DMEs					Alternate
0.0	JPU	AIR	MGW	CKB		
6.7	MGW	AIR	CKB			
14.4	EKN	MGW	CKB	AIR		
14.9	EKN	MGW	CKB			
25.9	EKN	MGW				
27.3	EKN	MGW	CKB			
33.1	EKN	CKB				
35.6	EKN	CKB	MGW			
44.0	CKB	MGW	ESL	EKN		
49.1	MGW	GRV	CKB	ESL	EKN	
62.3	MGW	GRV	ESL	CKB		
62.9	MGW	GRV	ESL			
75.8	ESL	GRV				
80.1						
88.1	ESL	GRV				
100.1	MRB	GRV	LDN	ESL		
105.0	MRB	LDN				
106.0	MRB	LDN	GRV	ESL		
107.3	MRB	LDN	ESL			
116.8	LDN	ESL	MRB	AML		
122.7	AML	LDN	MRB			
123.0	LDN	ESL	AML	MRB		
123.3	AML	LDN	MRB			
131.7	AML	MRB	LDN	CSN		
137.6	CSN	DCA	MRB	AML	LDN	
151.7	MRB	LDN	CSN	ADW	DCA	
160.9	MRB	CSN	AML	OTT	EMI	DCA
168.4	AML	DCA	MRB	EMI	ADW	OTT
172.4	BAL	DCA	ADW	EMI	OTT	AML

Inertial Drift Segments			
#	Start Location	End Location	Length [NM]
1	N39° 13' 50.9054", W079° 03' 14.3510"	N39° 12' 55.3067", W078° 53' 02.2767"	7.969

Available DMEs by Waypoints			
Waypoint Before	Waypoint After	DME List	Suggested DMEs
LUISE	BUCKO	EKN, AIR, CKB, MGW, JPU	
BUCKO	DRRON	EKN, GRV, CKB, MGW, ESL	
DRRON	HONNR	EKN, GRV, CKB, MGW, ESL	
HONNR	BRVRY	GRV, MGW, ESL	
BRVRY	COURG	GRV, ESL	
COURG	PLDGE	LDN, GRV, MRB, ESL	
PLDGE	WEWIL	AML, LDN, MRB, ESL	
WEWIL	NEVVR	AML, LDN, MRB	
NEVVR	FORGT	AML, LDN, MRB, CSN	
FORGT	SEPII	AML, DCA, LDN, MRB, CSN	
SEPII	ALWYZ	AML, DCA, ADW, LDN, MRB, CSN	
ALWYZ	FRDMM	AML, DCA, ADW, LDN, MRB, OTT, CSN	
FRDMM	STAND	EMI, AML, DCA, ADW, LDN, MRB, BAL, OTT, CSN	
STAND	TGTHR	AML, EMI, DCA, ADW, MRB, BAL, OTT, CSN	
TGTHR	FERGI	AML, EMI, DCA, ADW, MRB, BAL, OTT	

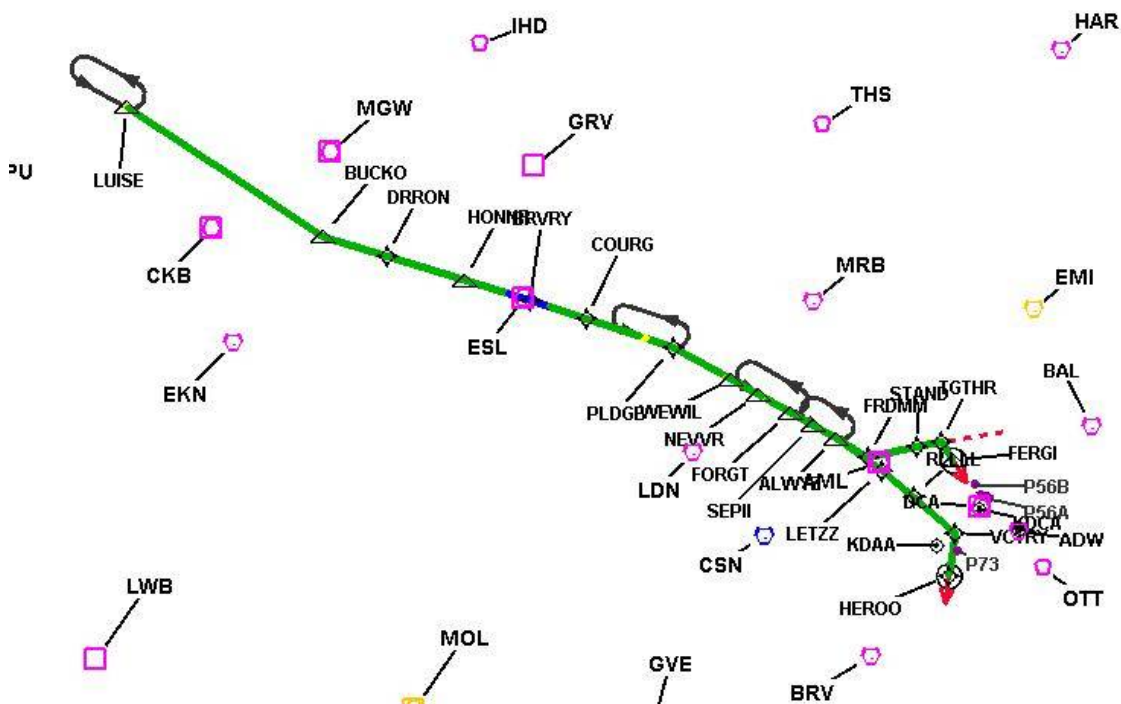
DME DME Assessment Results for FRDMM6 path LUISE_FERGI

User Data Files								
#	File Name							
None								
User DMEs								
#	Name	Lat/Lon	MAGVAR	Range	Elevation [ft]	Frequency	Replaces	Status
None								



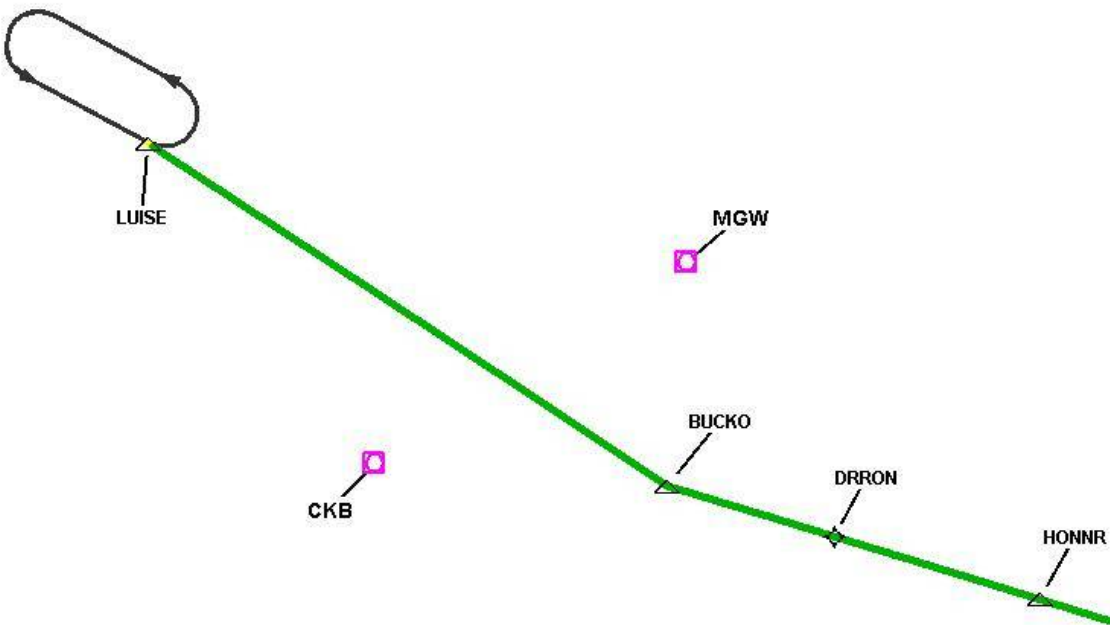
DME DME Assessment Results for FRDMM6 path LUISE_FERG1

Graphic Depiction 1

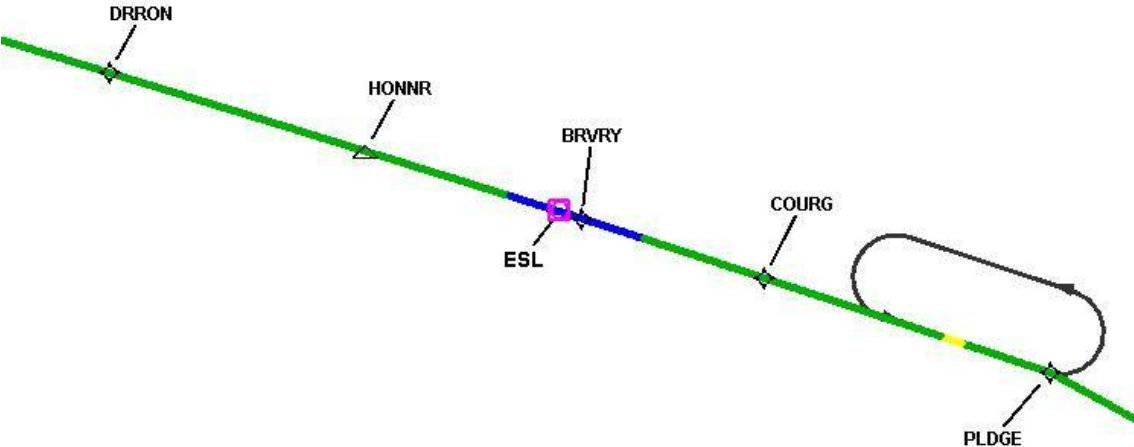


DME DME Assessment Results for FRDMM6 path LUISE_FERGI

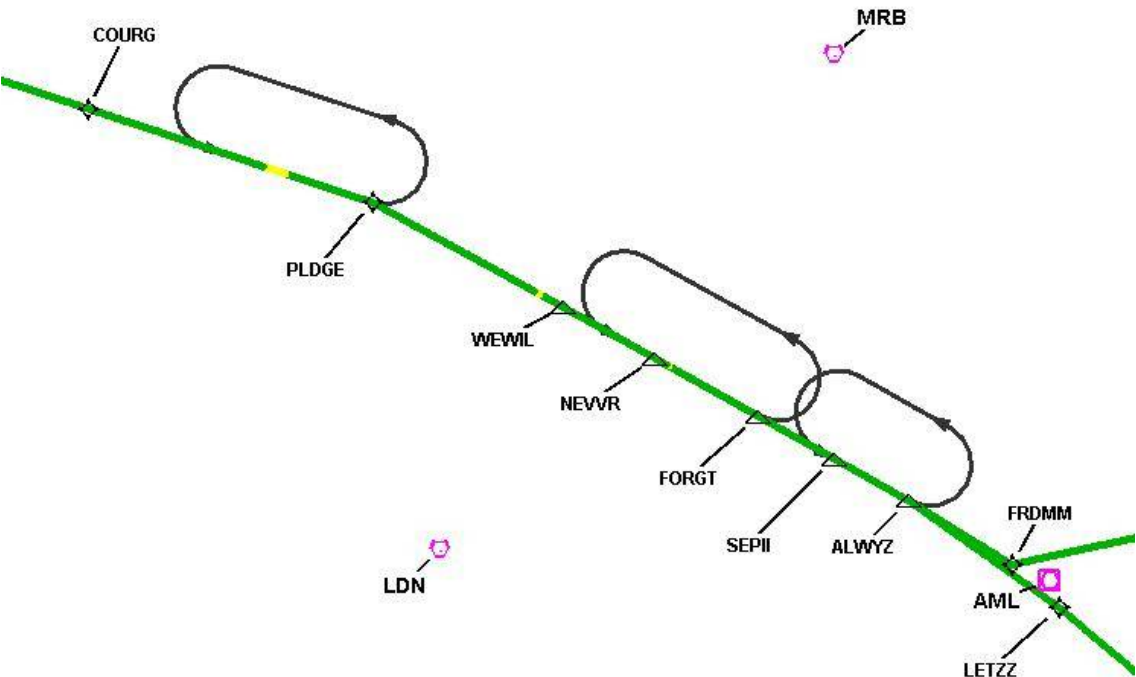
Graphic Depiction 2



Graphic Depiction 3



Graphic Depiction 4



Graphic Depiction 5

DME DME Assessment Results for FRDMM6 path LUISE_FERGI

Graphic Depiction 6

