
The AZ KOLS NOGALES THREE was returned pre-PRB for the following.

V2 IS BEING RETURNED PRE-PRB FOR THE FOLLOWING:

1) NEED APPROVAL FOR INTERCEPT ANGLE FOR BOTH RUNWAYS – RWY 22: INTERCEPT ANGLE 50 AND RWY 4: INTERCEPT ANGLE 59 – IAW 8260.3F, 13-3-3.B.(2). **New Approval Letter added**

2) VERIFY CEILING FOR VCOA – TARGETS DETERMINES VCA OBSTACLE 6620 AAO N312439.14/W1104511.74. **changed VCOA Obs**

Flight Procedures Cover Page	Task Action: FLIGHT CHECK	Task Type: Graphical DP	Estimated Chart Date: 01/25/2024	APWS Task ID: CF450BC895314224B7F53C536D036040	APWS Project ID: F56FFFA78A747688AD4A1D277644704
Procedure: NOGALES THREE DEPARTURE (OBSTACLE)		Enroute: YES	Specialist: Sarmiento, April		Agreement Number:
Airport ID: KOLS			Airport City: NOGALES		State: AZ
Facility ID: TUS	Facility Type: VORTAC	Flight Inspection Remark Type: Hold FC Slot			
<div>Procedure Comments:</div> <div>PENDING AIRNAV DATA USED AT KOLS.</div> <div>MAGVAR CHANGED FROM 12 EAST/1980 TO 9 EAST/2025.</div> <div>CHANGED ALL REFERENCE FROM RWY 3/21 TO RWY 4/22.</div> <div>CANCELS FDC T-NOTAM 2/6670.</div> <div>WAIVER SUBMITTED TO PERMIT EXTENDING DEAD RECKONING (DR) LEG SEGMENT MORE THAN 10 NM. CONTACT: CASIMIR</div> <div>TABAKA 405-954-7931.</div> <div>11/13/2023: THIS IS A UPDATED COPY OF THE FORM DEVELOPED ON 8/14/2023</div> <div>CHANGED ARVEY OLS 18.60 DME TO ARVEY OLS 18.03 DME AND INKLE OLS 15.8 DME TO INKLE OLS 13.92 DME.</div> <div>11/21/2023: THIS IS A UPDATED COPY OF THE FORM DEVELOPED ON 8/14/2023</div> <div>CHANGE THE VISUAL CLIMB AREA OBSTACLE TO 6620 FT MSL AAO N312439.14N/W1104511.74W</div> <div>01/18/2024: THIS IS A UPDATED COPY OF THE FORM DEVELOPED ON 8/14/2023</div> <div>1. CHANGED REQUIRED EFFECTIVE DATE FROM "ROUTINE" TO "03/21/2024" - PROJECT REQUIRES A HARD DATE.</div> <div>8260-2 INKLE</div> <div>02/13/2024: THIS IS CORRECTED COPY OF THE FORM APPROVED ON 10/26/2023.</div> <div>CHANGED FAC 1 TUS VORTAC: DME AND DIST FROM FAC NM FROM 29.44 TO 29.25.</div> <div>J ZEDER 02/132024</div> <div>QUALITY 20 CHECKED</div> <div>QUALITY 15 CHECKED</div> <div>QUALITY 16 CHECKED</div>					

1. FLIGHT PROCEDURE IDENTIFICATION:

NOGALES, NM
NOGALES INTERNATIONAL (OLS)
OBSTACLE DEPARTURE PROCEDURE (OBSTACLE)

2. WAIVER REQUIRED AND APPLICABLE STANDARD:

TO PERMIT EXTENDING DEAD RECKONING (DR) LEG SEGMENT MORE THAN 10 NM. FAA ORDER 8260.3E, PARAGRAPH 13-3-2. STATES: "LIMIT DR SEGMENT TO A MAXIMUM DISTANCE OF 10 NM FROM DEPARTURE END OF RUNWAY (DER)." (THE OLS VOR/DME IS RECEIVABLE FROM THE GROUND.)

3. REASON FOR WAIVER (JUSTIFICATION FOR NONSTANDARD TREATMENT):

DUE TO MOUNTAINOUS TERRAIN, INTERNATIONAL AIRSPACE BOUNDARY, RESTRICTED & SPECIAL USE AIRSPACE CONSTRICTIONS, UNRELIABLE RADIO COVERAGE, AND LACK OF SUITABLE NAVIGATIONAL AIDS TO PROVIDE A BETTER GEOMETRIC INTERCEPT, FLYING THE NOGALES DEPARTURE IS THE ONLY OPTION TO CLEAR TERRAIN, AND TO CONNECT WITH ENROUTE STRUCTURE. THERE ARE CAT D AIRCRAFT INBOUND/ OUTBOUND TO/FROM THIS AIRPORT, AND THE MIXED FLEET REQUIRES A CONVENTIONAL DEPARTURE. THE NOGALES DEPARTURE WILL REQUIRE A DEAD RECKONING (DR) LEG OF 15.16 NM FOR RWY 22 AND 10.73 NM FOR RWY 04, WHICH EXCEEDS MAXIMUM DR LEG DISTANCE PER FAA ORDER 8260.3E, PARAGRAPH 13-3-2; ALTHOUGH NAVAID RECEPTION IS AVAILABLE. FURTHERMORE, CLIMBING ON THE NOGALES DEPARTURE PROVIDES A ROUTE SAFE FROM TERRAIN AND OBSTACLES. THE OLS VOR/DME IS ON THE MON RETENTION LIST.

4. EQUIVALENT LEVEL OF SAFETY PROVIDED:

RELIABLE NAVAID COVERAGE IS RECEIVABLE FROM THE GROUND TO THE PCG POINT, BUT PCG IS NOT ESTABLISHED UNTIL ON THE RADIAL. THE VOR IS AVAILABLE FOR DIRECTIONAL PURPOSES TO THE PCG INTERCEPT POINT. AIRCRAFT ON THE NOGALES DEPARTURE WILL BE CLEAR OF MOUNTAINOUS TERRAIN AND WITHIN ADEQUATE RADIO RECEPTION OF TUCSON APPROACH WHEN ON PCG, WHICH SHOULD OCCUR 5.92 NM FROM THE FIRST FIX WHEN DEPARTING RWY 22 OR 8.63 NM FROM THE FIRST FIX WHEN DEPARTING RWY 04. ADSB AIRCRAFT CAN BE SEEN AT ALMOST GROUND LEVEL. NON-ADSB AIRCRAFT DEPARTING RWY 22 CAN BE OBSERVED AT 6000 ON RADAR AND RWY 04 AT 7000.

5. ALTERNATIVE ACTIONS DEEMED NOT FEASIBLE:

A DIVERSE DEPARTURE OPTION DOESN'T GIVE THE AIRCRAFT ROOM TO CLIMB TO ENROUTE ALTITUDE WITHOUT AN EXCESSIVE CLIMB GRADIENT AND MUCH VECTORING IN A CONFINED SPACE. A VCOA VIOLATES BOTH THE RESTICTED AREA TO THE EAST AND INTERNATIONAL AIRSPACE TO THE SOUTH. MOVING THE NAVAID TO A BETTER GEOMETRIC SOLUTION FOR INTERCEPT WOULD FULFILL POSITIVE COURSE GUIDANCE REQUIREMENT WITHOUT/MINIMUM DEAD RECKONING; HOWEVER, CURRENTLY THERE ARE NO FUTURE PLANS TO MOVE THE FACILITY AS IT IS TIED TO THE AIRWAY SYSTEM IN THE NAS.

6. COORDINATION WITH USER ORGANIZATIONS (SPECIFY):

7. SUBMITTED BY:

DATE	OFFICE IDENTIFICATION	TITLE
10/27/2023	AJV-A430	MGR

SIGNATURE

Digitally signed by
CASIMIR L TABAKA

Oct 27, 2023

8. AFS ACTIONS:

☐ APPROVED ☐ DISAPPROVED ☐ NOT REQUIRED

COMMENTS:

DATE ROUTING SYMBOL SIGNATURE



Federal Aviation Administration

Memorandum

Date:

To: Douglas F Rodzon, Acting Manager, Flight Technologies and Procedures Division, THRU: Wade E.K. Terrell, Manager, Flight Procedures and Airspace Group

From: Casimir Tabaka, Manager, IFP Coordination Team, AJV-A430

Subject: **ACTION:** Approval Request

AZ KOLS NOGALES THREE, Nogales, AZ (KOLS)

Request approval NOGALES THREE for intercept angle for both runways – RWY 22: intercept angle 50 and RWY 4: intercept angle 59 – IAW 8260.3F, 13-3-3.B.(2).

Nogales INTL is bound by international airspace to the south, a MOA to the West, a Restricted area to the East, and mountainous terrain alongside the single route available to enter and depart this airport. OLS RWY 22 sits approximately 6 nm from International Airspace. The departure from RWY 22 has an intercept angle of 50. Remaining within a 15 degrees or optimum intercept of 30-45 degrees intercept would lead aircraft directly across international Airspace and/or into the RUBY 1 MOA and terrain. In a similar fashion, OLS RWY 4 sits approximately 5 nm from rapidly climbing mountainous terrain and R-2303A/B. RWY 4 has an intercept angle of 59. Remaining within the 15 degree or the optimum 30-45 degrees intercept would put aircraft inside of R-2303A/B and/or in mountainous terrain. To retain aircraft within US airspace boundaries, out of military used airspace, outside a restricted area, and away from mountainous terrain within NAVAID coverage, a greater than optimum turn is required on both ends. To provide a safe and expeditious departure route out of OLS, approval is requested for both runways to allow a turn greater than optimum intercept.

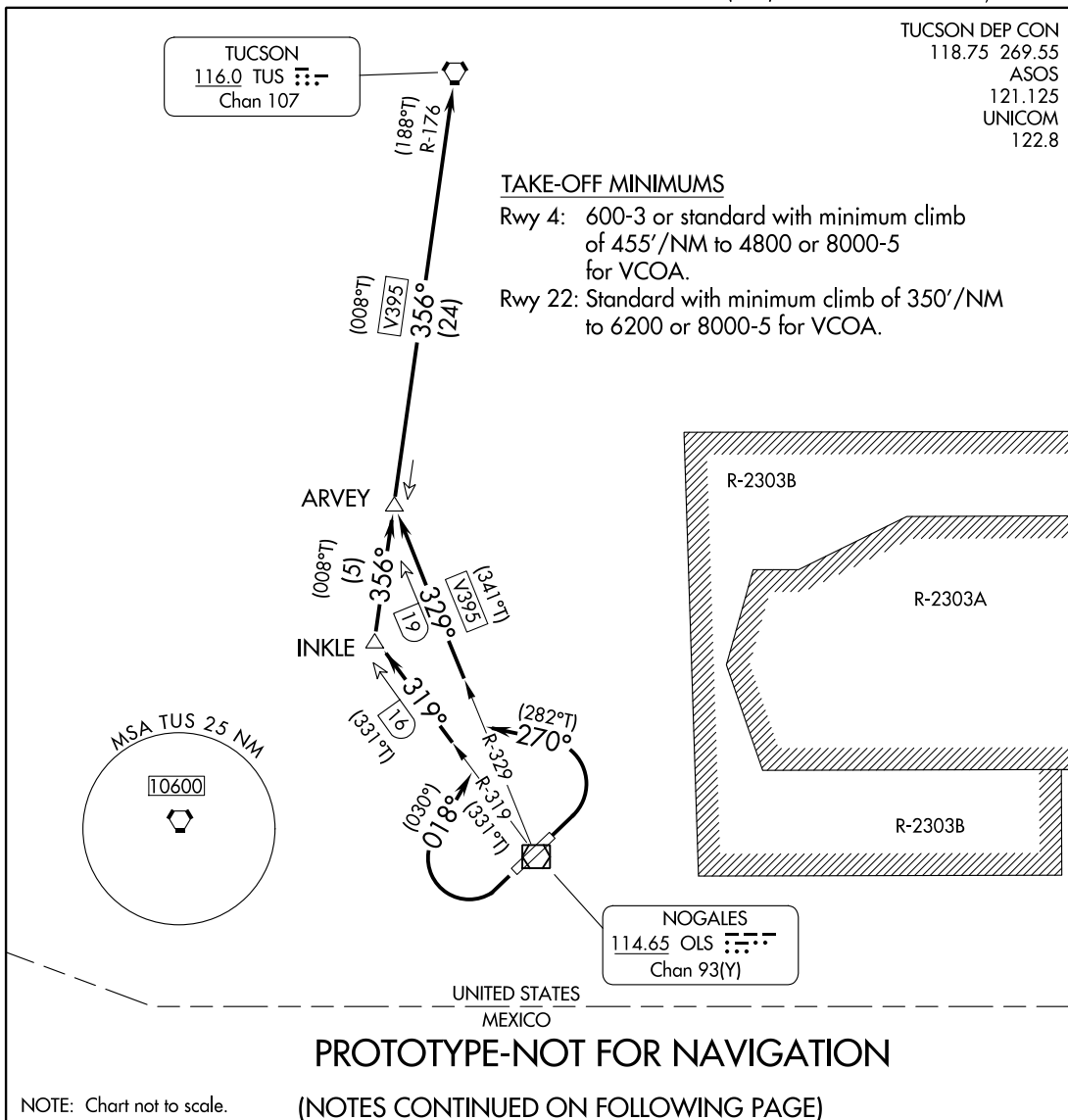
(OLS3.OLS) FIG

NOGALES THREE DEPARTURE (OBSTACLE)

AL-6151 (FAA)

NOGALES INTL (OLS)

NOGALES, ARIZONA



DEPARTURE ROUTE DESCRIPTION

TAKEOFF RUNWAY 4: Climbing left turn heading 270° to intercept OLS VOR/DME R-329 to ARVEY INT/OLS 19 DME, thenence. . . .

TAKEOFF RUNWAY 21: Climbing right turn heading 018° to intercept OLS VOR/DME R-319 to INKLE INT/OLS 16 DME, to TUS R-176 to ARVEY INT/OLS 18 DME, thenence. . . .

VCOA ALL RUNWAYS: Obtain ATC approval for VCOA when requesting IFR clearance. Climb in visual conditions to cross Nogales Intl Airport at or above 11800, Max 210k, before proceeding o course, thenence. . . .

. . . .on TUS VORTAC R-176 to cross TUS VORTAC at or above MEA/MCA for assigned route of flight.

NOGALES THREE DEPARTURE (OBSTACLE)

(OLS3.OLS) FIG

NOGALES, ARIZONA

NOGALES INTL (OLS)

AUTOMATED AL-6151 NOGALES DEPARTURE

SW-4

10-1-23

COMPILER: JUN

REVIEWER:

DBL CHKR:

EFF DATE: FIG

(OLS3.TUS) FIG

NOGALES THREE DEPARTURE (OBSTACLE)

AL-6151 (FAA)

NOGALES INTL (OLS)

NOGALES, ARIZONA

TAKEOFF OBSTACLE NOTES

Rwy 4: Tree 58' from DER, 455' left of centerline, 3963' MSL. Tree 80' from DER, 174' right of centerline, 6' AGL/3958' MSL. Trees beginning 97' from DER, 446' left of centerline, up to 15' AGL/3964' MSL. Tree 252' from DER, 43' right of centerline, 5' AGL/3962' MSL. Tree 261' from DER, 463' left of centerline, 3971' MSL. Trees beginning 308' from DER, 37' right of centerline, up to 6' AGL/ 3964' MSL. Trees, fence beginning 334' from DER, 136' left of centerline, up to 3987' MSL. Trees beginning 368' from DER, 64' right of centerline, up to 3991' MSL. Tree, terrain beginning 603' from DER, 546' right of centerline, up to 3993' MSL. Trees, fence, terrain beginning 659' from DER, 13' left of centerline, up to 3995' MSL. Trees, terrain, fence beginning 833' from DER, 50' right of centerline, up to 4010' MSL. Tree, terrain beginning 1179' from DER, 118' left of centerline, up to 5' AGL/ 3996' MSL. Trees, terrain beginning 1199' from DER, 97' right of centerline, up to 4036' MSL. Trees, terrain beginning 1241' from DER, 66' left of centerline, up to 4018' MSL. Tree, terrain beginning 1412' from DER, 90' right of centerline, up to 4043' MSL. Vehicles on road, terrain beginning 1624' from DER, 642' left of centerline, up to 4028' MSL. Terrain beginning 1637' from DER, 2' right of centerline, up to 4052' MSL. Trees, vehicles on road, terrain beginning 1688' from DER, 45' left of centerline, up to 4035' MSL. Terrain beginning 1825' from DER, 38' right of centerline, up to 4067' MSL. Pole, vehicles on road, trees beginning 1853' from DER, 475' left of centerline, up to 21' AGL/4043' MSL. Terrain 2033' from DER, 186' left of centerline, 4047' MSL. Trees, vehicles on road, terrain beginning 2041' from DER, 74' left of centerline, up to 7' AGL/4052' MSL. Terrain 2221' from DER, 269' left of centerline, 4055' MSL. Trees, vehicles on road, terrain beginning 2253' from DER, 170' left of centerline, up to 18' AGL/4080' MSL. Terrain beginning 2354' from DER, 20' right of centerline, up to 4068' MSL. Trees, vegetation vehicles on road, pole, terrain beginning 2491' from DER, 55' left of centerline, up to 14' AGL/4093' MSL. Terrain beginning 2539' from DER, 125' right of centerline, up to 4087' MSL. Vehicles on road 2657' from DER, 32' left of centerline, 15' AGL/ 4095' MSL. Vehicles on road, trees, terrain beginning 2672' from DER, 6' left of centerline, up to 15' AGL/4096' MSL. Vehicles on road, terrain beginning 2688' from DER, 2' right of centerline, up to 15' AGL/4096' MSL. Terrain, vehicles on road beginning 2768' from DER, 98' right of centerline, up to 4112' MSL. Vehicles on road 2987' from DER, 530' right of centerline, 4117' MSL. Vehicles on road 2995' from DER, 635' right of centerline, 4121' MSL. Vehicles on road, terrain beginning 3009' from DER, 489' right of centerline, up to 4123' MSL. Vehicles on road, terrain beginning 3351' from DER, 12' right of centerline, up to 4130' MSL. Vehicles on road, terrain beginning 3449' from DER, 633' right of centerline, up to 4143' MSL. Vehicles on road 3499' from DER, 1364' right of centerline, 4149' MSL. Vehicles on road, terrain, vegetation beginning 3570' from DER, 101' right of centerline, up to 4155' MSL. Terrain beginning 3581' from DER, 42' left of centerline, up to 4112' MSL. Terrain beginning 4127' from DER, 627' right of centerline, up to 4156' MSL. Tree, terrain beginning 4143' from DER, 768' right of centerline, up to 4180' MSL. Trees, terrain beginning 4262' from DER, 426' right of centerline, up to 4184' MSL. Tree, terrain beginning 4495' from DER, 709' right of centerline, up to 4210' MSL. Terrain beginning 4627' from DER, 1171' right of centerline, up to 4217' MSL. Trees, terrain beginning 4737' from DER, 216' right of centerline, up to 4223' MSL. Tree, terrain beginning 5806' from DER, 343' right of centerline, up to 4241' MSL. Trees, terrain beginning 5953' from DER, 409' right of centerline, up to 4254' MSL. Trees, terrain beginning 1 NM from DER, 58' right of centerline, up to 4256' MSL. Tree, terrain beginning 1 NM from DER, 1260' left of centerline, up to 4136' MSL. Trees, terrain beginning 1.1 NM from DER, 433' left of centerline, up to 4151' MSL. Trees, pole, terrain beginning 1.2 NM from DER, 75' left of centerline, up to 16' AGL/4221' MSL. Trees, vegetation, terrain beginning 1.3 NM from DER, 84' left of centerline, up to 4254' MSL. Trees, terrain beginning 1.4 NM from DER, 25' left of centerline, up to 11' AGL/4283' MSL. Tree, terrain beginning 1.4 from DER, 140' right of centerline, up to 4326' MSL. Tree, terrain beginning 1.4 NM from DER, 140' right of centerline, up to 4326' MSL. Tree, terrain beginning 1.5 NM from DER, 79' right of centerline, up to 11' AGL/4327' MSL. Tree, terrain beginning 1.7 NM from DER, 639' right of centerline, up to 4345' MSL. Tree, terrain beginning 1.8 NM from DER, 172' right of centerline, up to 4367' MSL. Tree, terrain beginning, 1.9 NM from DER, 628' right of centerline, up to 4384' MSL. Terrain, vehicles on road, trees beginning 2 NM from DER, 935' right of centerline, up to 4406' MSL. Terrain trees, 2.1 NM from DER, 616' left of centerline, 4299' MSL. Terrain, vehicles on road, trees beginning 2.2 NM from DER, 1859' right of centerline, 234' left of centerline, up to 4451' MSL. Terrain, trees, vehicles on road beginning 2.3 NM from DER, 835' right of centerline, up to 14' AGL/4535' MSL.

Rwy 22: Tree 3' from DER, 445' left of centerline, 3847' MSL. Tree 19' from DER, 141' left of centerline, 10' AGL/3848' MSL. Tree 29' from DER, 339' left of centerline, 3849' MSL. Tree, vegetation beginning 45' from DER, 201' left of centerline, up to 17' AGL/3851' MSL. Tree 48' from DER, 504' right of centerline, 3845' MSL. Tree, vegetation beginning 112' from DER, 49' right of centerline, up to 24' AGL/3854' MSL. Vehicles on roads, tree beginning 2 NM from DER, 3648' left of centerline, up to 15' AGL/4208' MSL. Tree 2.3 NM from DER, 3969' left of centerline, 11' AGL/4219' MSL.

PROTOTYPE-NOT FOR NAVIGATION

NOGALES THREE DEPARTURE (OBSTACLE)
(OLS3.TUS) FIG

NOGALES, ARIZONA
NOGALES INTL (OLS)

AUTOMATED AL-6151 NOGALES DEPARTURE (CONT PAGE)

SW-4
12/28/22
COMPILER: JUN
REVIEWER:
DBL CHKR:
EFF DATE: FIG

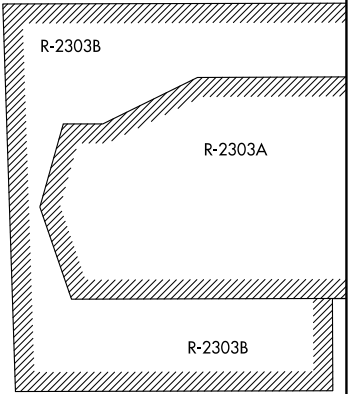
TUCSON
116.0 TUS
Chan 107
N32°05.71'-W110°54.89'
L-5, H-4

ASOS
121.125
TUCSON DEP CON
118.75 269.55
UNICOM
122.8

TAKE-OFF MINIMUMS

Rwy 3: 400-1¾ with minimum climb of 325' per NM to 5100 or standard with minimum climb of 455' per NM to 5100 or 1300-3 for VCOA.
Rwy 21: Standard with minimum climb of 350' per NM to 5100 or 1300-3 for VCOA.

ARVEY
N31°41.64'
W110°58.85'



NOGALES
114.65 OLS
Chan 93 (Y)

UNITED STATES
MEXICO

NOTE: Chart not to scale.

(NOTES CONTINUED ON FOLLOWING PAGE)

DEPARTURE ROUTE DESCRIPTION

TAKEOFF RUNWAY 3: Climbing left turn heading 296° to intercept OLS VOR/DME R-326 to ARVEY INT/OLS 18 DME, thence. . .

TAKEOFF RUNWAY 21: Climb right turn heading 356° to intercept OLS VOR/DME R-326 to ARVEY INT/OLS 18 DME, thence. . .

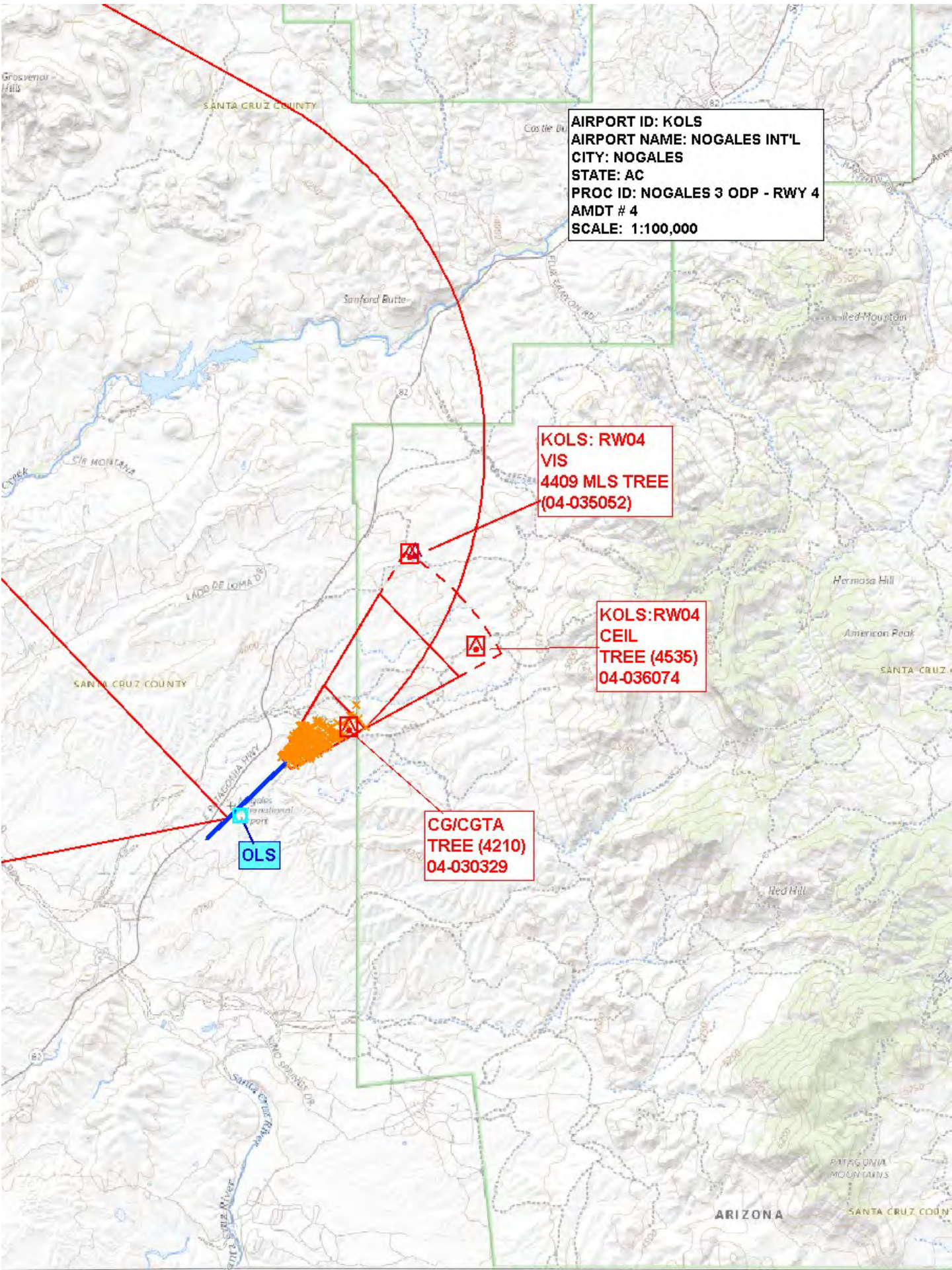
VCOA ALL RUNWAYS: Obtain ATC approval for VCOA when requesting IFR clearance. Climb in visual conditions to cross Nogales Intl Airport at or above 6900 before proceeding on OLS R-326 to ARVEY INT/OLS 18 DME, thence. . .

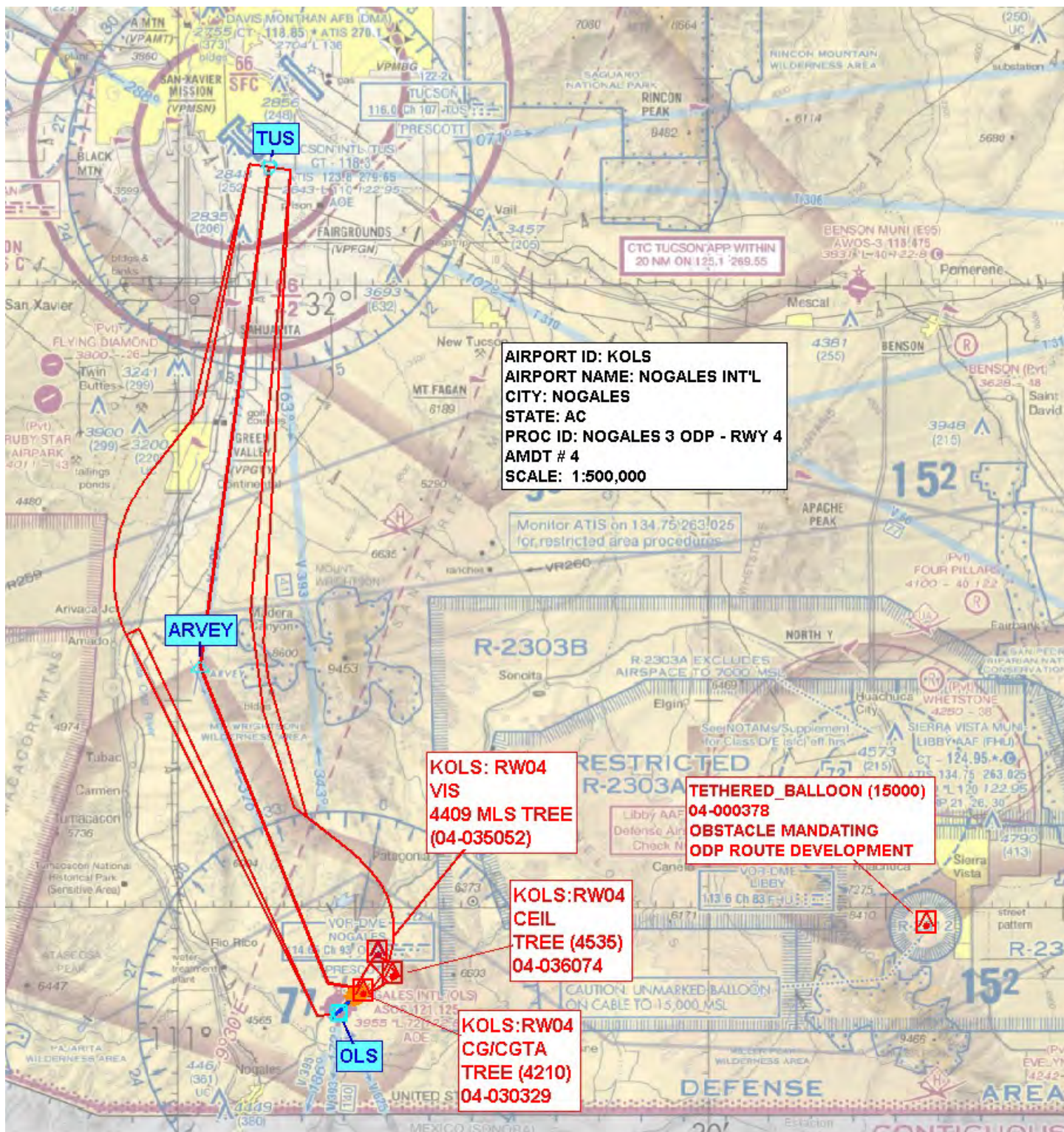
. . . on TUS VORTAC R-176 to cross TUS VORTAC at or above MEA/MCA for assigned route of flight.

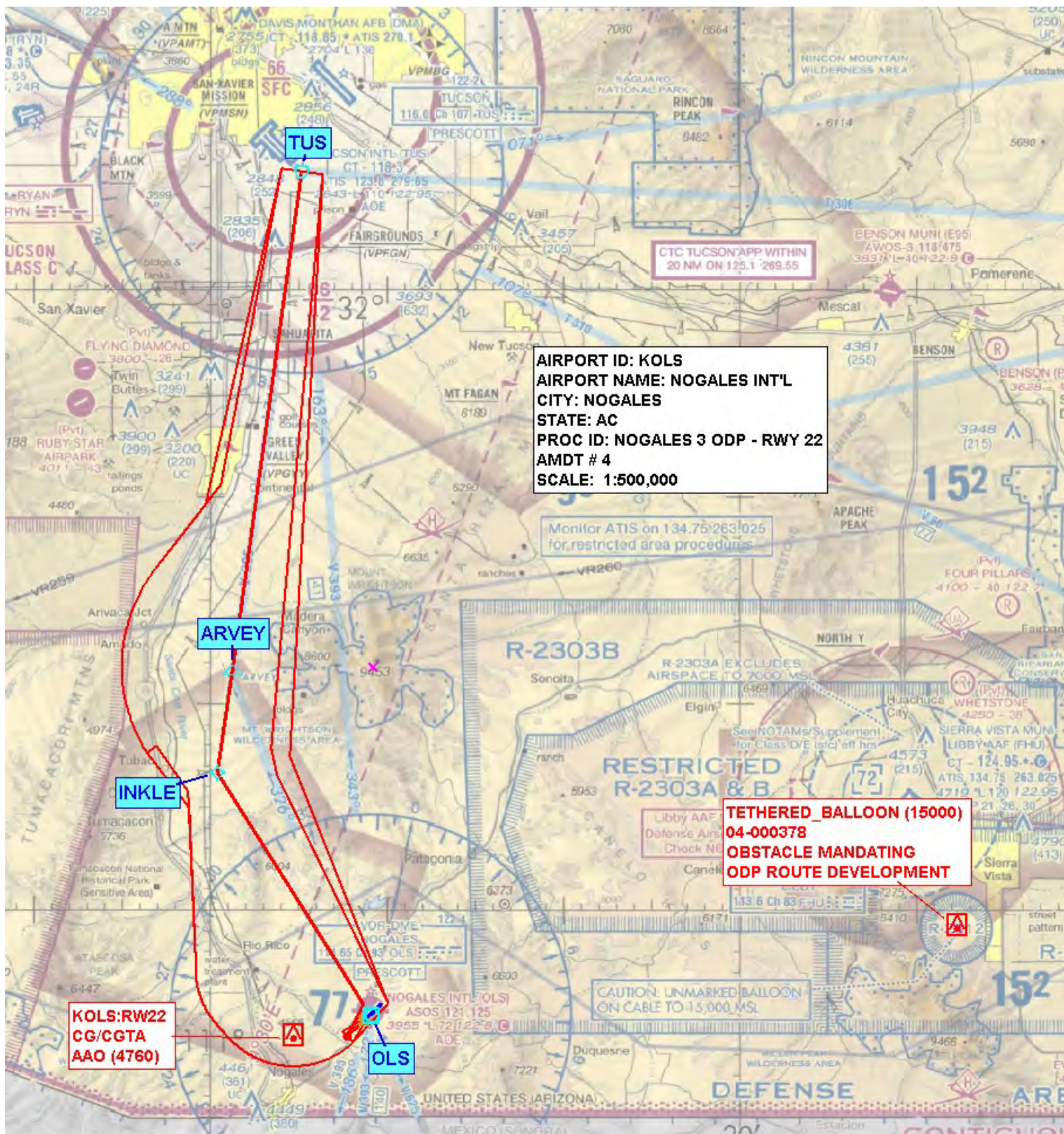
TAKEOFF OBSTACLE NOTES	
Rwy 3:	Trees 58' from DER, 455' left of centerline, 3963' MSL. Tree 80' from DER, 174' right of centerline, 6' AGL/3958' MSL. Trees beginning 97' from DER, 446' left of centerline, up to 15' AGL/3964' MSL. Tree 252' from DER, 43' right of centerline, 5' AGL/3962' MSL. Tree 261' from DER, 463' left of centerline, 3971' MSL. Trees beginning 308' from DER, 37' right of centerline, up to 9' AGL/ 3964' MSL. Trees, fence beginning 334' from DER, 136' left of centerline, up to 3987' MSL. Trees beginning 368' from DER, 64' right of centerline, up to 3991' MSL. Tree, terrain beginning 603' from DER, 546' right of centerline, up to 3993' MSL. Trees, fence, terrain beginning 659' from DER, 13' left of centerline, up to 3995' MSL. Trees, terrain, fence beginning 833' from DER, 103' right of centerline, up to 4010' MSL. Trees, terrain beginning 1179' from DER, 118' left of centerline, up to 5' AGL/ 3996' MSL. Trees, terrain beginning 1199' from DER, 97' right of centerline, up to 4036' MSL. Trees, terrain beginning 1241' from DER, 66' left of centerline, up to 4018' MSL. Trees, terrain beginning 1412' from DER, 90' right of centerline, up to 4043' MSL. Traverse way, terrain beginning 1624' from DER, 642' left of centerline, up to 4028' MSL. Terrain beginning 1637' from DER, 2' right of centerline, up to 4052' MSL. Trees, traverse way, terrain beginning 1688' from DER, 45' left of centerline, up to 4035' MSL. Terrain beginning 1825' from DER, 38' right of centerline, up to 4067' MSL. Pole, traverse way, trees beginning 1853' from DER, 475' left of centerline, up to 21' AGL/4043' MSL. Terrain 2033' from DER, 186' left of centerline, 4047' MSL. Trees, traverse way, terrain beginning 2041' from DER, 74' left of centerline, up to 7' AGL/4052' MSL. Terrain 2221' from DER, 269' left of centerline, 4055' MSL. Tree, traverse way, terrain beginning 2253' from DER, 170' left of centerline, up to 18' AGL/4080' MSL. Terrain beginning 2354' from DER, 20' right of centerline, up to 4068' MSL. Trees, traverse way, pole, terrain beginning 2491' from DER, 55' left of centerline, up to 14' AGL/4093' MSL. Terrain beginning 2539' from DER, 125' right of centerline, up to 4087' MSL. Traverse way 2657' from DER, 32' left of centerline, 15' AGL/ 4095' MSL. Traverse way, trees, terrain beginning 2672' from DER, 6' left of centerline, up to 15' AGL/4096' MSL. Traverse way, terrain beginning 2688' from DER, 2' right of centerline, up to 15' AGL/4096' MSL. Terrain, traverse way beginning 2768' from DER, 98' right of centerline, up to 4112' MSL. Traverse way 2987' from DER, 530' right of centerline, 4117' MSL. Traverse way 2995' from DER, 635' right of centerline, 4121' MSL. Traverse way, terrain beginning 3009' from DER, 489' right of centerline, up to 4123' MSL. Tree, traverse way, terrain beginning 3351' from DER, 12' right of centerline, up to 4130' MSL. Traverse way, terrain beginning 3449' from DER, 633' right of centerline, up to 4143' MSL. Traverse way 3499' from DER, 1364' right of centerline, 4149' MSL. Traverse way, terrain, vegetation beginning 3570' from DER, 101' right of centerline, up to 4155' MSL. Tree, terrain beginning 3581' from DER, 42' left of centerline, up to 4112' MSL. Terrain beginning 4127' from DER, 627' right of centerline, up to 4156' MSL. Tree, terrain beginning 4143' from DER, 768' right of centerline, up to 4180' MSL. Trees, terrain beginning 4262' from DER, 426' right of centerline, up to 4184' MSL. Tree, terrain beginning 4495' from DER, 709' right of centerline, up to 4210' MSL. Terrain beginning 4627' from DER, 1171' right of centerline, up to 4217' MSL. Tree, terrain beginning 4737' from DER, 216' right of centerline, up to 4223' MSL. Tree, terrain beginning 5806' from DER, 409' right of centerline, up to 4241' MSL. Trees, terrain beginning 5953' from DER, 420' right of centerline, up to 4254' MSL. Trees, terrain beginning 1 NM from DER, 58' right of centerline, up to 4256' MSL. Trees, terrain beginning 1 NM from DER, 1260' left of centerline, up to 4136' MSL. Trees, terrain beginning 1.1 NM from DER, 442' left of centerline, up to 4151' MSL. Pole, trees, terrain beginning 1.2 NM from DER, 164' left of centerline, up to 16' AGL/4221' MSL. Trees, terrain beginning 1.3 NM from DER, 84' left of centerline, up to 4254' MSL. Trees, terrain beginning 1.4 NM from DER, 58' right of centerline, up to 11' AGL/ 4326' MSL. Trees, terrain beginning 1.4 NM from DER, 25' left of centerline, up to 11' AGL/4283' MSL. Trees, terrain beginning 1.5 NM from DER, 79' right of centerline, up to 11' AGL/4327' MSL. Trees, terrain beginning 1.7 NM from DER, 639' right of centerline, up to 4345' MSL. Trees, terrain beginning 1.8 NM from DER, 172' right of centerline, up to 4367' MSL. Trees, terrain beginning 1.9 NM from DER, 628' right of centerline, up to 4384' MSL. Terrain, traverse way, trees beginning 2 NM from DER, 935' right of centerline, up to 4406' MSL. Terrain 2.1 NM from DER, 616' left of centerline, 4299' MSL. Trees, terrain, traverse way beginning 2.2 NM from DER, 1859' right of centerline, up to 100' AGL/4451' MSL. Trees, traverse way, terrain beginning 2.2 NM from DER, 234' left of centerline, up to 4359' MSL. Trees, terrain, traverse way beginning 2.3 NM from DER, 835' right of centerline, up to 14' AGL/4535' MSL.
Rwy 21:	Tree 3' from DER, 445' left of centerline, 3847' MSL. Tree 19' from DER, 141' left of centerline, 10' AGL/3848' MSL. Tree 29' from DER, 339' left of centerline, 3849' MSL. Tree, vegetation beginning 45' from DER, 201' left of centerline, up to 17' AGL/3851' MSL. Tree 48' from DER, 504' right of centerline, 3845' MSL. Trees, vegetation beginning 112' from DER, 49' right of centerline, up to 24' AGL/3854' MSL.

SW-4, 03 NOV 2022 to 01 DEC 2022

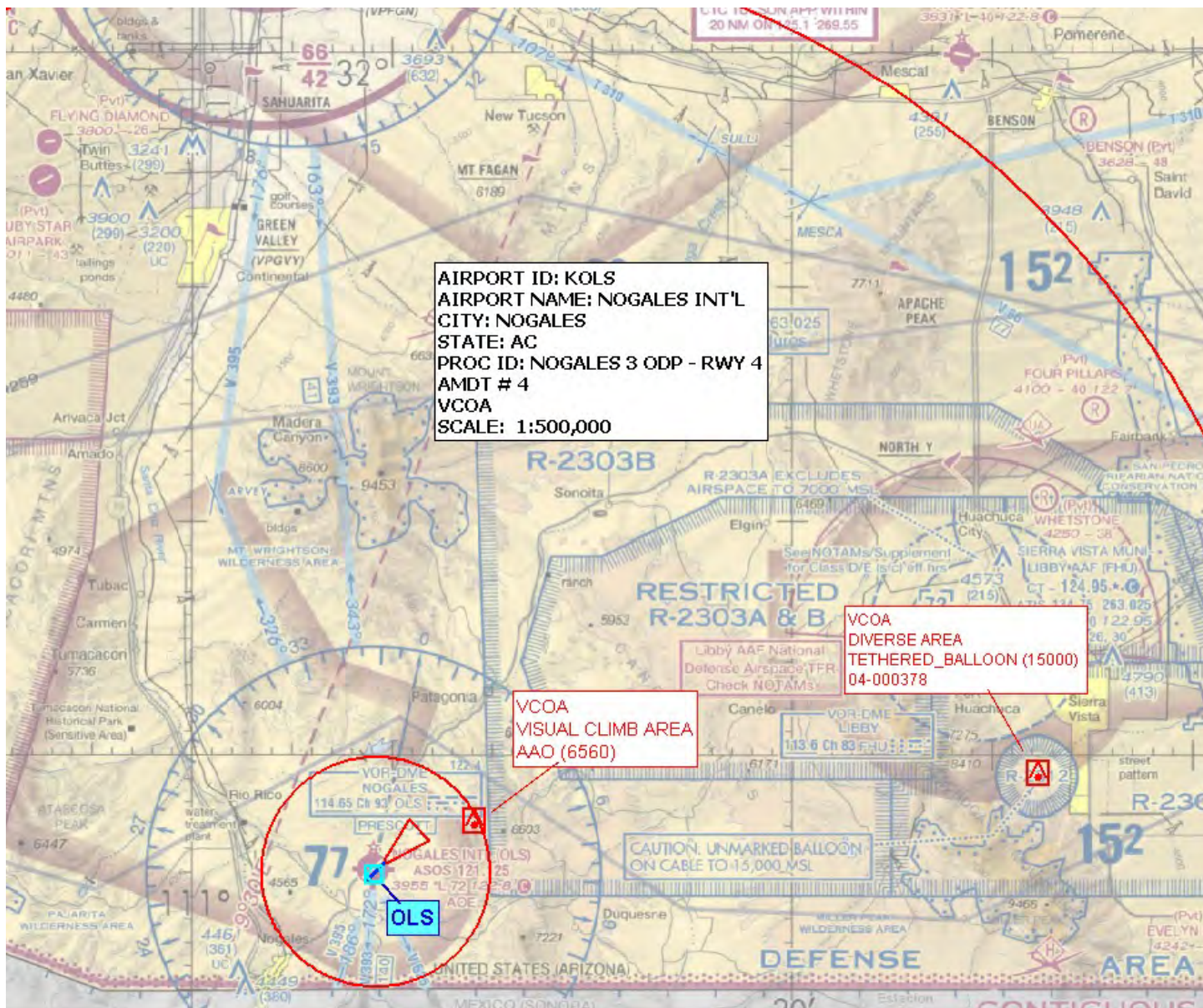
SW-4, 03 NOV 2022 to 01 DEC 2022







Mexico airspace



Mexico airspace



Federal Aviation Administration

Initial Development Notification for AIRNAV Pending Records

To: Casimir Tabaka, Manager Aeronautical Data, Sub-Team B, AJV-A312

From: Julie Morgan, Manager IFP Coordination Team, AJV-A41

Subject: **ACTION:** Request for Pending Records **KOLS_K__NOGALES INTL, NOGALES, AZ US**

The Magnetic Variation (MV) data for the airport(s) and/or facility(s) listed will be revised effective concurrent with the publication of the procedure(s) listed below. Estimated Chart Date: 4/22/2021

Current/Assigned MV E 12 1980 New MV E 9 2025

ECD	Airport ID	Procedure Name	AMDT #	Task Report Type Selections
4/22/2021	KOLS	NOGALES INTL KOLS NOGALES AZ (OBSTACLE) AMDT 4		MAGVAR
4/22/2021	KOLS	NOGALES THREE DEPARTURE (OBSTACLE)		MAGVAR
4/22/2021	KOLS	RNAV (GPS)-A ORIG		MAGVAR
4/22/2021	KOLS	VOR/DME-B ORIG		MAGVAR

NAVAID ID / RWY	Type / Old No.	Use / New RWY/Note
OLS (NOGALES)	VOR/DME	VOR/DME

IF you have any questions please notify: julie.a.morgan@faa.gov

405-954-8568

Processed Tuesday, October 06, 2020