

Flight Procedure Tracking Form		Action: AMENDMENT	Task Type: IAP	Date Open: 10/31/2019	Task #: 2019103130132301004	Request #: 20191031301323
Procedure: RNAV (GPS) RWY 31 AMDT 1C			Airport ID: KBIS	Airport: BISMARCK MUNI		Reimbursable #: NO
City: BISMARCK	ST: ND	GPS #:	Estimated Chart Date: 04/23/2020		FICO #:	
Fac ID: N/A		Fac. Type:		Specialist: RUSSELL ROSLEWSKI		
Procedure Review						
	Rec'd	Rel'd	Full Name	Comments		
Lead:	11/06/2019			QUALITY		
QA:				24		
Liaison:				CHECKED		
Procedure Comments:			Remark Type: INFORMATION			
<p>P-NOTAM 0/5085</p> <p>NEW CIRCLING AREAS BASED ON EXISTING PROCEDURE AT AIRPORT.</p> <p>PROCESSED IAW AIRCRAFT OPERATIONS GROUP (AJW-33) MEMO, OCTOBER 3, 2018, SUBJECT: FLIGHT INSPECTION REVIEW NOT REQUIRED.</p> <p>DAVE DANNER, 405-954-5077</p>						

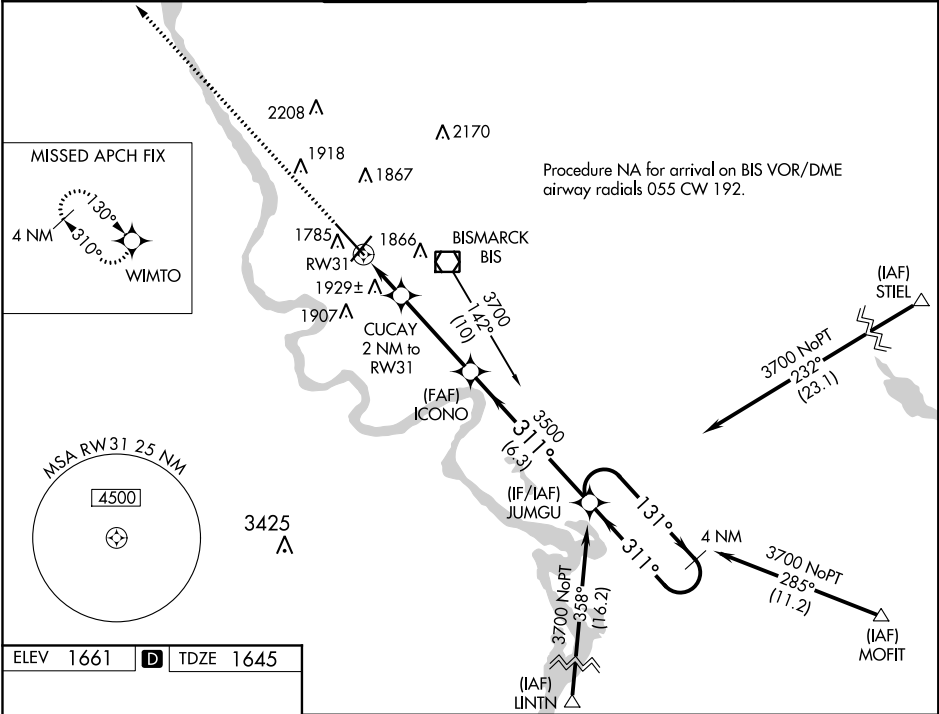
QUALITY
41
CHECKED

WAAS CH 56599 W31A	APP CRS 311°	Rwy Idg 8794 TDZE 1645 Apt Elev 1661
--	------------------------	---

RNAV (GPS) RWY 31
BISMARCK MUNI (BIS)

ASR -35°C	For uncompensated Baro-VNAV systems, LNAV/VNAV NA below -18°C (0°F) or above 33°C (91°F). DME/DME RNP-0.3 NA. ** RVR 1800 authorized with use of FD or AP or HUD to DA.	MALSR 	MISSED APPROACH: Climb to 3800 direct WIMTO and hold.
---------------------	---	-----------	---

ATIS 119.35	BISMARCK APP CON★ 126.3 298.9	BISMARCK TOWER★ 118.3 (CTAF) 0 257.8	GND CON 121.9	UNICOM 122.95
-----------------------	---	--	-------------------------	-------------------------



*LNAV only.				
CATEGORY	A	B	C	D
LPV DA	1845/24 200 (200-1/2)			
LNAV/VNAV DA	2269-1 3/4 624 (700-1 3/4)			
LNAV MDA	2180/24	535 (600-1/2)	2180/55	535 (600-1)
CIRCLING	2240-1	579 (600-1)	2240-1 1/2	2320-2
			579 (600-1 1/2)	659 (700-2)

