

FEDERAL AVIATION ADMINISTRATION
FLIGHT STANDARDS SERVICE
STANDARD TERMINAL ARRIVAL (STAR)

Bearings, headings, courses, tracks and radials are magnetic. Elevations and altitudes are in feet, MSL. Altitudes are minimum altitudes unless otherwise indicated.
Distances are in nautical miles (NM). Graphic depictions attached.

Arrival Name ARLFT (RNAV)	Number ONE	STAR Computer Code ENO.ARLFT1	Superseded Number NONE	Dated	Effective Date				
TRANSITION ROUTES:									
Transition Name	Transition Computer Codes	From FIX/NAVAID	To FIX/NAVAID	Course	Distance	MEA	MOCA	MAA	Crossing Altitudes / Fixes
BUBBI	BUBBI.ARLFT1	BUBBI	BUBBI						BETWEEN 15000 AND FL180
			MRB VORTAC	118.16	14.00	5000	4400		AT 13000
			WOOLY	106.00	37.89	5000	3800		
			SWANN	118.34	39.28	5000	3000		
			BROSS	093.55	16.43	3000	1500		
			ENO VORTAC	093.77	17.17	3000	1500		
LUNDY	LUNDY.ARLFT1	LUNDY	LUNDY						AT FL290
			CURBY	117.68	23.28	7000	5500		BETWEEN FL210 AND FL240
			KEESH	117.35	10.00	5000	4500		
			BUBBI	118.14	12.81	5000			BETWEEN 15000 AND FL180
			MRB VORTAC	118.16	14.00	5000	4400		AT 13000
			WOOLY	106.00	37.89	5000	3800		
			SWANN	118.34	39.28	5000	3000		
			BROSS	093.55	16.43	3000	1500		
			ENO VORTAC	093.77	17.17	3000	1500		
MAULS	MAULS.ARLFT1	MAULS	MAULS						
			STPBY	099.90	63.50	15000	6200		
			COLIN	091.45	64.06	7000	1900		
			GOFER	055.45	26.39	7000	1500		
			PRNCZ	048.07	15.47	7000	1500		
			HEDGE	048.18	19.70	5000	1500		
			ENO VORTAC	048.34	25.29	3000	1500		
THHMP	THHMP.ARLFT1	THHMP	THHMP						
			COLIN	052.31	47.95	7000	1600		
			GOFER	055.45	26.39	7000	1500		



FEDERAL AVIATION ADMINISTRATION
FLIGHT STANDARDS SERVICE
STANDARD TERMINAL ARRIVAL (STAR)

Bearings, headings, courses, tracks and radials are magnetic. Elevations and altitudes are in feet, MSL. Altitudes are minimum altitudes unless otherwise indicated.
Distances are in nautical miles (NM). Graphic depictions attached.

Arrival Name			Number	STAR Computer Code		Superseded Number			Dated	Effective Date
ARLFT (RNAV)			ONE	ENO.ARLFT1		NONE				
Transition Name	Transition Computer Codes	From FIX/NAVAID	To FIX/NAVAID	Course	Distance	MEA	MOCA	MAA	Crossing Altitudes / Fixes	
			PRNCZ	048.07	15.47	7000	1500			
			HEDGE	048.18	19.70	5000	1500			
			ENO VORTAC	048.34	25.29	3000	1500			

ARRIVAL ROUTE DESCRIPTION:

LANDING KDOV/33N/KILG: FROM ENO VORTAC ON TRACK 090.00/3.00 TO CROSS ARLFT AT OR ABOVE 3000, THEN ON HEADING 090.00 OR AS ASSIGNED BY ATC. EXPECT RADAR VECTORS TO FINAL APPROACH COURSE.

PROCEDURAL DATA NOTES:

NOTE: RADAR REQUIRED

NOTE: RNAV 1

NOTE: DME/DME/IRU OR GPS REQUIRED

NOTE: LUNDY TRANSITION FOR KDOV AND 33N ARRIVALS ONLY

NOTE: BUBBI TRANSITION ATC ASSIGNED ONLY

FIXES AND/OR HOLDING PATTERNS:

CHART HOLDING AT BUBBI: NW, RT, 117.35 INBOUND, 10 NM LEGS.

CHART HOLDING AT COLIN: SW, LT, 058.00 INBOUND, 5 NM LEGS.

COMMUNICATIONS:

DOVER APP CON

DOVER ATIS

AIRPORTS SERVED:

DELAWARE AIRPARK, DOVER/CHESWOLD, DE (33N)

DOVER AFB, DOVER, DE (KDOV)

NEW CASTLE, WILMINGTON, DE (KILG)

LOST COMMUNICATIONS PROCEDURE:

REMARKS:

ADDITIONAL FLIGHT DATA:

DME/DME ASSESSMENT: SAT (RNP 2.0)

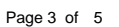
MAG VAR: KDOV 12W/2020

CHART AT ARLFT TERMINUS: LDG 33N, KDOV, AND KILG

QUALITY
16
CHECKED

Bearings, headings, courses, tracks and radials are magnetic. Elevations and altitudes are in feet, MSL. Altitudes are minimum altitudes unless otherwise indicated. Distances are in nautical miles (NM). Graphic depictions attached.

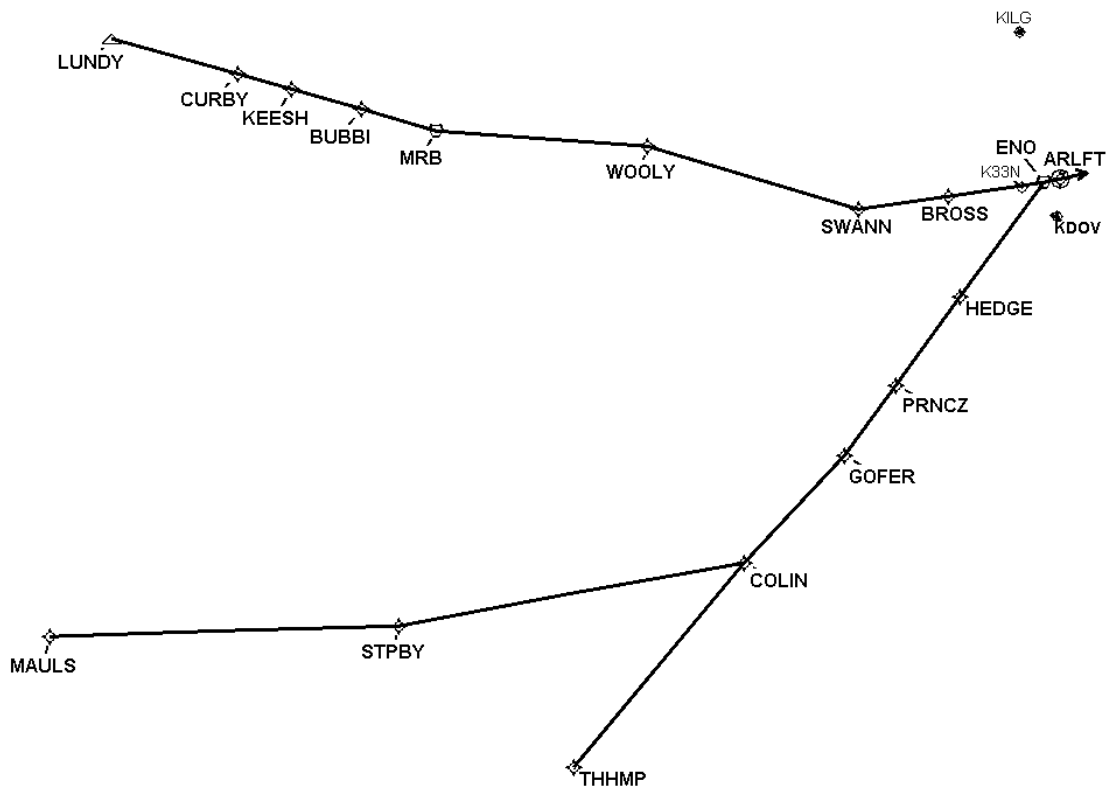
	CHANGES:
	REASONS:
	ORIG



FEDERAL AVIATION ADMINISTRATION
FLIGHT STANDARDS SERVICE
STANDARD TERMINAL ARRIVAL (STAR)

Bearings, headings, courses, tracks and radials are magnetic. Elevations and altitudes are in feet, MSL. Altitudes are minimum altitudes unless otherwise indicated.
Distances are in nautical miles (NM). Graphic depictions attached.

Arrival Name	Number	STAR Computer Code	Superseded Number	Dated	Effective Date
ARLFT (RNAV)	ONE	ENO.ARLFT1	NONE		
Graphic Depiction 1					

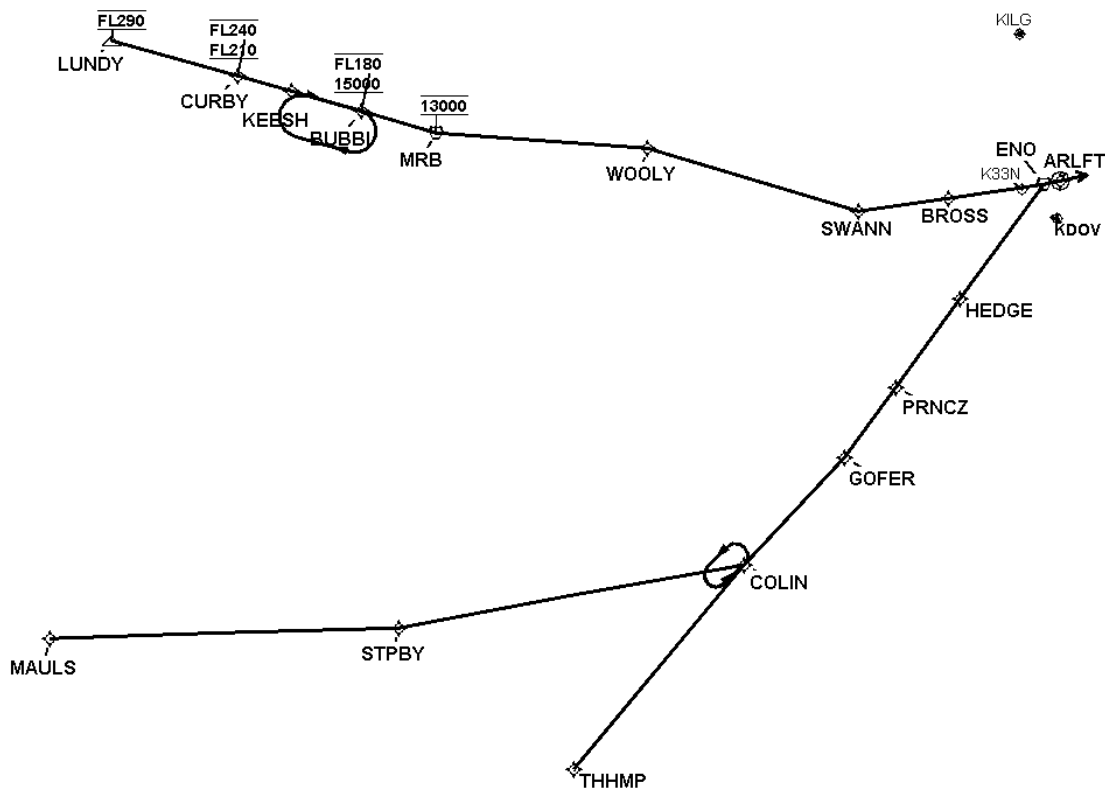


QUALITY
16
CHECKED

FEDERAL AVIATION ADMINISTRATION
FLIGHT STANDARDS SERVICE
STANDARD TERMINAL ARRIVAL (STAR)

Bearings, headings, courses, tracks and radials are magnetic. Elevations and altitudes are in feet, MSL. Altitudes are minimum altitudes unless otherwise indicated.
Distances are in nautical miles (NM). Graphic depictions attached.

Arrival Name	Number	STAR Computer Code	Superseded Number	Dated	Effective Date
ARLFT (RNAV)	ONE	ENO.ARLFT1	NONE		
Graphic Depiction 2					



QUALITY
16
CHECKED

FEDERAL AVIATION ADMINISTRATION
FLIGHT STANDARDS SERVICE
STAR (DATA RECORD)

Arrival Name ARLFT (RNAV)	Number ONE	STAR Computer Code ENO.ARLFT1	Superseded Number NONE	Dated	Effective Date				
FIX/NAVAID	LAT/LONG	C	FO/FB	LEG TYPE	TC	DIST (NM)	ALTITUDE	SPEED	REMARKS
En Route Transition									
BUBBI	392703.29N / 0780814.71W	Y		IF			15000BFL180		BUBBI.ARLFT1
MRB VORTAC	392308.06N / 0775054.08W	Y	FB	TF	106.16	14.00	AT 13000		
WOOLY	392019.18N / 0770211.17W	Y	FB	TF	094.00	37.89			
SWANN	390905.28N / 0761343.94W	Y	FB	TF	106.34	39.28			
BROSS	391128.40N / 0755249.88W	Y	FB	TF	081.55	16.43			
ENO VORTAC	391353.93N / 0753057.49W	Y	FB	TF	081.77	17.17			
En Route Transition									
LUNDY	393939.40N / 0790534.57W	Y		IF			AT FL290		LUNDY.ARLFT1
CURBY	393317.96N / 0783635.74W	Y	FB	TF	105.68	23.28	FL210BFL240		
KEESH	393038.33N / 0782408.14W	Y	FB	TF	105.35	10.00			
BUBBI	392703.29N / 0780814.71W	Y	FB	TF	106.14	12.81	15000BFL180		
MRB VORTAC	392308.06N / 0775054.08W	Y	FB	TF	106.16	14.00	AT 13000		
WOOLY	392019.18N / 0770211.17W	Y	FB	TF	094.00	37.89			
SWANN	390905.28N / 0761343.94W	Y	FB	TF	106.34	39.28			
BROSS	391128.40N / 0755249.88W	Y	FB	TF	081.55	16.43			
ENO VORTAC	391353.93N / 0753057.49W	Y	FB	TF	081.77	17.17			
En Route Transition									
MAULS	375249.36N / 0791949.19W	Y		IF					MAULS.ARLFT1
STPBY	375441.76N / 0775937.96W	Y	FB	TF	087.90	63.50			
COLIN	380559.23N / 0763950.85W	Y	FB	TF	079.45	64.06			
GOFER	382507.84N / 0761645.30W	Y	FB	TF	043.45	26.39			
PRNCZ	383738.10N / 0760508.20W	Y	FB	TF	036.07	15.47			
HEDGE	385332.11N / 0755014.46W	Y	FB	TF	036.18	19.70			
ENO VORTAC	391353.93N / 0753057.49W	Y	FB	TF	036.34	25.29			
En Route Transition									
THHMP	372929.47N / 0771908.75W	Y		IF					THHMP.ARLFT1

QUALITY
16
CHECKED

QUALITY
16
CHECKED

FEDERAL AVIATION ADMINISTRATION
FLIGHT STANDARDS SERVICE
STAR (DATA RECORD)

Arrival Name ARLFT (RNAV)	Number ONE	STAR Computer Code ENO.ARLFT1		Superseded Number NONE		Dated	Effective Date		
FIX/NAVAID	LAT/LONG	C	FO/FB	LEG TYPE	TC	DIST (NM)	ALTITUDE	SPEED	REMARKS
COLIN	380559.23N / 0763950.85W	Y	FB	TF	040.31	47.95			
GOFER	382507.84N / 0761645.30W	Y	FB	TF	043.45	26.39			
PRNCZ	383738.10N / 0760508.20W	Y	FB	TF	036.07	15.47			
HEDGE	385332.11N / 0755014.46W	Y	FB	TF	036.18	19.70			
ENO VORTAC	391353.93N / 0753057.49W	Y	FB	TF	036.34	25.29			
Common Route									
ENO VORTAC	391353.93N / 0753057.49W	Y		IF					ENO.ARLFT1
ARLFT	391431.32N / 0752710.88W	Y	FO	TF	078.00	03.00	AT/ABOVE 3000		
33N,KDOV,KILG				VM	078.00				

