

Flight Procedures Cover Page	Task Action: P-NOTAM	Task Type: IAP	Estimated Chart Date: 12/03/2020	APWS Task ID: CC489B15A73E434998BE9473F6592BE9	APWS Request ID: 1B5359A06C6544C593DCFC8D6E7A230F
Procedure: NDB RWY 35 AMDT 2B		Enroute: NO	Specialist: Hazelton, John		Agreement Number:
Airport ID: KEHA	Airport Name: ELKHART-MORTON COUNTY		Airport City: ELKHART		State: KS
Facility ID:	Facility Type:	Flight Inspection Remark Type:			
<p>Procedure Comments: P-NOTAM</p> <p>NEW CIRCLING RADII.</p> <p>PROCESSED IAW AIRCRAFT OPERATIONS GROUP (AJF-1000) MEMO, DATED JUNE 4, 2020, SUBJECT: FLIGHT INSPECTION OF NEW CONTROLLING OBSTACLES</p> <p>CONTACT: JASON KRETSCHMER, AJV-A421 POC, 405.954.4019.</p>					

QUALITY
25
CHECKED

QUALITY
41
CHECKED

OLD

ELKHART, KANSAS

AL-6681 (FAA)

17341

NDB EHA	APP CRS	Rwy Idg
377	345°	4900
		TDZE
		3619
		Apt Elev
		3622

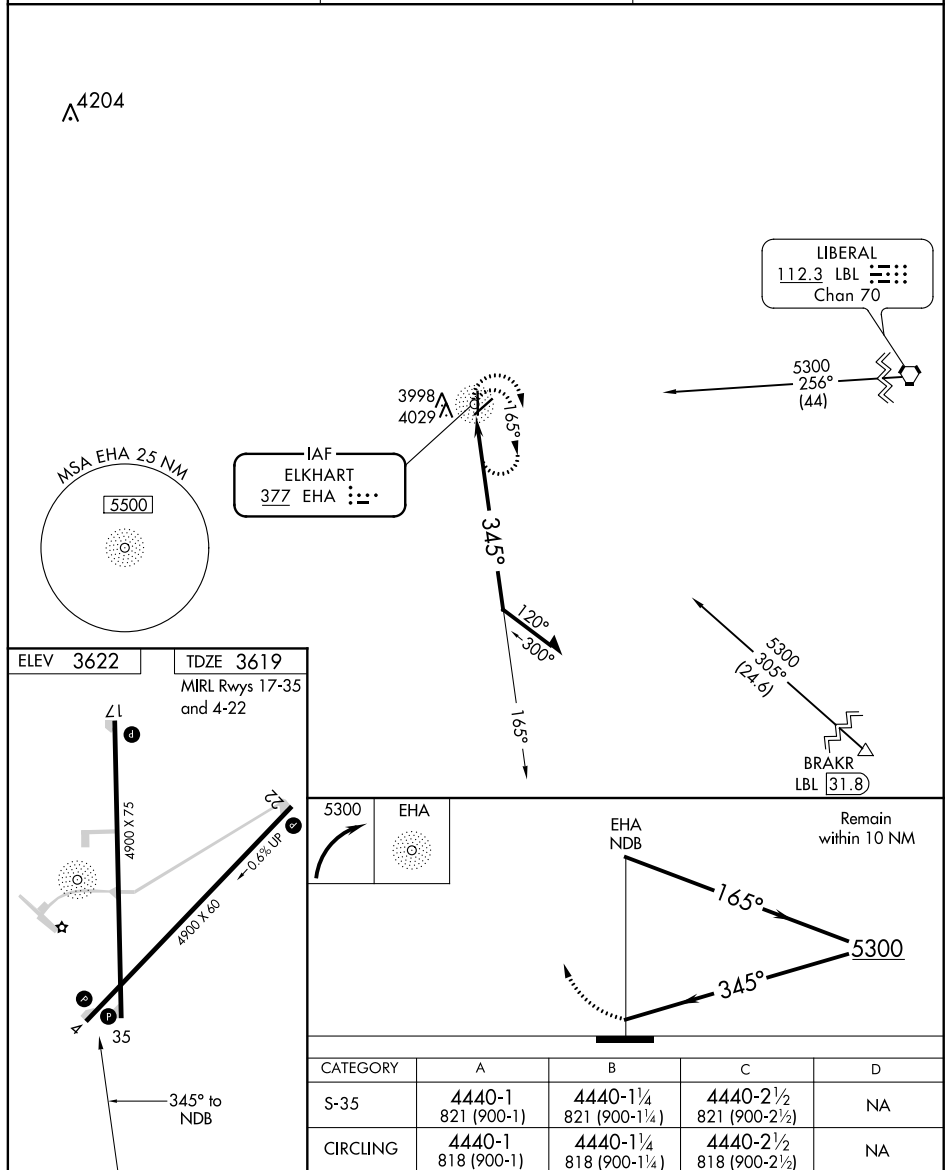
NDB RWY 35

ELKHART-MORTON COUNTY (EHA)

When local altimeter setting not received, use Liberal altimeter setting and increase all MDA 220 feet, increase Cat A and B visibility $\frac{1}{4}$ mile, and increase Cat C visibility $\frac{1}{2}$ mile. Circling Rwy 4, 17, 22 NA at night. Rwy 35 helicopter visibility reduction below $\frac{3}{4}$ NA.

MISSED APPROACH:
Climbing right turn to 5300
in EHA NDB holding pattern.

AWOS-3PT 118.025	KANSAS CITY CENTER 134.0 290.8	UNICOM 122.8 (CTAF) 0
----------------------------	--	---------------------------------



ELKHART, KANSAS
Amdt 2A 18AUG16

37°00' N-101°53' W

ELKHART-MORTON COUNTY (EHA)
NDB RWY 35

NC-2, 26 MAR 2020 to 23 APR 2020

NC-2, 26 MAR 2020 to 23 APR 2020