

Flight Procedures Cover Page	Task Action: FLIGHT CHECK	Task Type: IAP	Estimated Chart Date: 02/23/2023	APWS Task ID: CC194A7756664CE1A4D059FE057A276C	APWS Project ID: 5D6538B63C334EC58F2F1D0A98FD215C
Procedure: RNAV (GPS) RWY 35 ORIG		Enroute: NO	Specialist: Sarmiento, April		Agreement Number:
Airport ID: 48K			Airport City: NESS CITY		State: KS
Facility ID:	Facility Type:	Flight Inspection Remark Type: New FC Slot			
<div>Procedure Comments: IFR TO VFR AIRPORT USED PENDING DATA FOR K48K CRC 0B6F365E CONTACT CASIMIR TABAKA (405) 954-7931</div> <div>QUALITY 20 CHECKED</div> <div>QUALITY 9 CHECKED</div>					

VAN NESS, KANSAS

AL-9052 (FAA)

FIG

WAAS CH 82244 W35A	APP CRS 352°	Rwy Idg TDZE Apt Elev 4000 2315 2322
--	------------------------	--

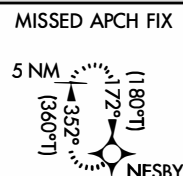
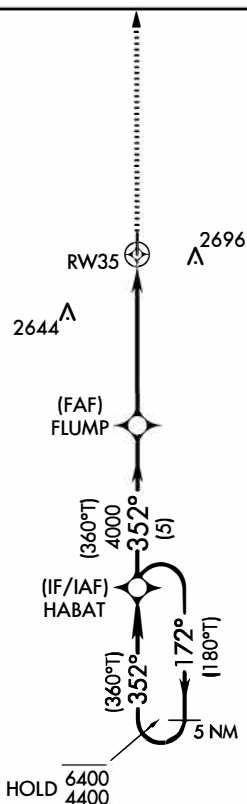
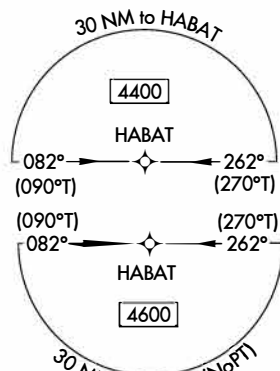
RNAV (GPS) RWY 35

VAN NESS MUNI (48K)

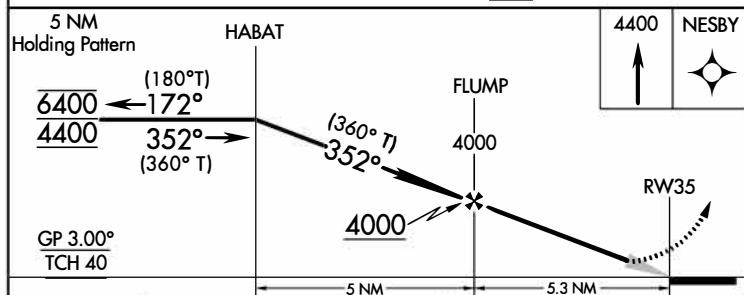
RNP APCH - GPS.		MISSED APPROACH: Climb to 4400 direct NESBY and hold.
<p>▼ Rwy 35 helicopter visibility reduction below $\frac{3}{4}$ SM NA. Baro-VNAV NA. Use Hays Rgnl altimeter setting, when not received, use Hill City altimeter setting and increase all LPV DA to 2702 feet, increase LNAV/VNAV DA to 2714 feet. Increase all MDAs 20 feet.</p> <p>▲ NA</p>		
HYS AWOS-3PT 125.525	XXXXX XXX.X XXX.X	CTAF 122.9

PROTOTYPE: NOT
FOR NAVIGATION

2973
▲



ELEV 2322 **D** TDZE 2315



CATEGORY	A	B	C	D
LPV DA	2696-1 $\frac{1}{8}$	381 (400-1 $\frac{1}{8}$)	NA	
LNAV/VNAV DA	2708-1 $\frac{1}{8}$	393 (400-1 $\frac{1}{8}$)	NA	
LNAV MDA	2860-1	545 (600-1)	NA	
CIRCLING	3020-1 698 (700-1)	3140-1 $\frac{1}{4}$ 818 (900-1 $\frac{1}{4}$)	NA	

MIRL Rwy 17-35
REILS Rwy 17 and 35

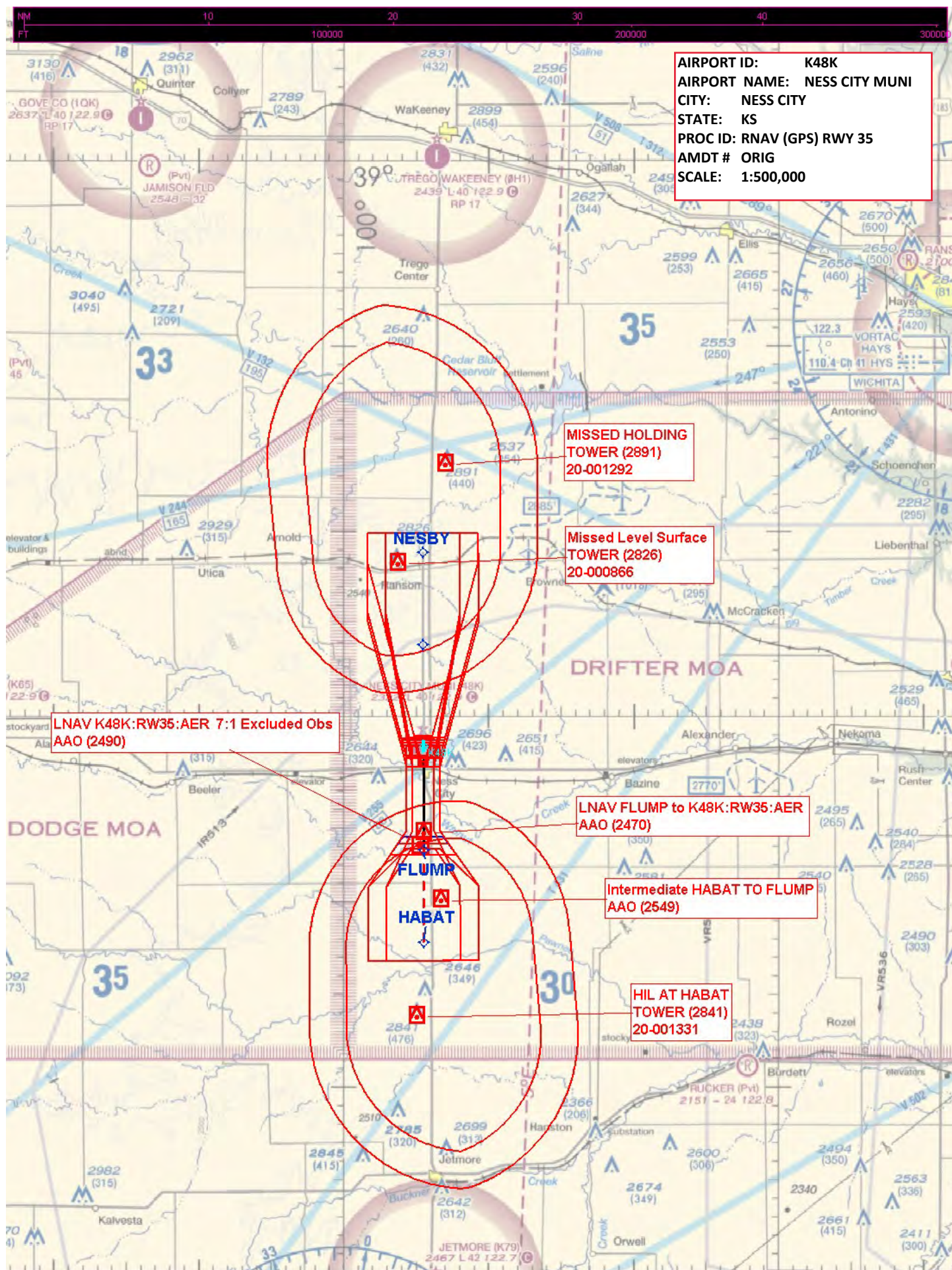
AUTOMATED AL-9052 RNAV (GPS) RWY 35

NC-2
9 NOV 2022
COMPILER: CG
REVIEWER:
DBL CHKR:
EFF: FIG

VAN NESS, KANSAS
Orig FIG

38°28'N-99°55'W

VAN NESS MUNI (48K)
RNAV (GPS) RWY 35



AIRPORT ID: K48K
AIRPORT NAME: NESS CITY MUNI
CITY: NESS CITY
STATE: KS
PROC ID: RNAV (GPS) RWY 35 - TAA
AMDT # ORIG
SCALE: 1:500,000

Straight-In 262 CW 082
Airspace Terrain 2877 (2900)

Straight-In 082 CW 262
Airspace Terrain 2877 (2900)

TAA Straight-In
262 CW 082
TOWER (3556)
20-001663

TAA Straight-In
082 CW 262
TOWER (3343)
20-002575

