

Flight Procedures Cover Page	Task Action: FLIGHT CHECK	Task Type: IAP	Estimated Chart Date: 12/31/2020	APWS Task ID: CBE430C7721840C2A6CABB4B56EE0BA9	APWS Project ID: 5E445E542A7A4A46A2615936E31EDD5D
Procedure: RNAV (GPS) RWY 18 AMDT 2		Enroute: NO	Specialist: Mitchell, Tyler		Agreement Number:
Airport ID: KLRJ		Airport City: LE MARS		State: IA	
Facility ID:	Facility Type:	Flight Inspection Remark Type: Hold FC Slot			
<p><b>Procedure Comments:</b>  Amendment due to runway construction.</p> <p>Pending Data used.</p> <p>This cancels NOTAM 0/7597</p> <p>Contact Andrew Henning: 405-954-9954</p> <p>11/23/2020: This is an updated copy of the form developed on 9/11/2020.  1. Required effective date changed from Routine to 12/31/2020.</p>					

QUALITY  
18  
CHECKED

OLD PLATE

LE MARS, IOWA

AL-5679 (FAA)

19339

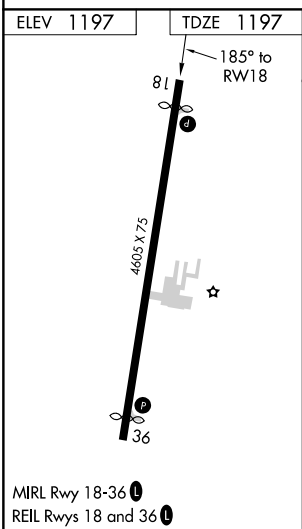
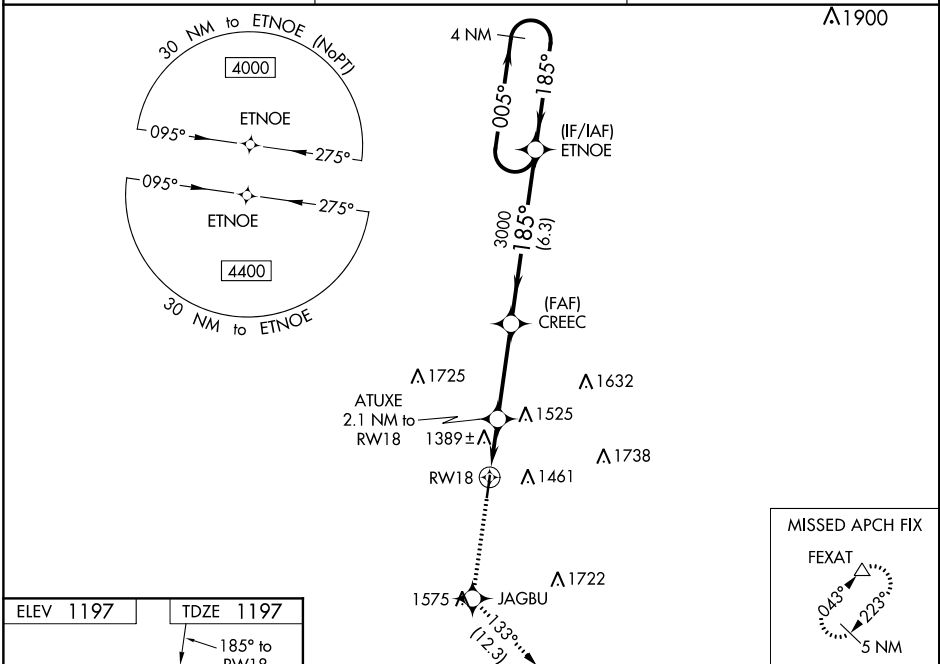
WAAS CH <b>78415</b> <b>W18A</b>	APP CRS <b>185°</b>	Rwy Idg TDZE Apt Elev <b>1197</b>
--	------------------------	---

# **RNAV (GPS) RWY 18** LE MARS MUNI (L.R.J)

**⚠** Baro-VNAV NA when using Orange City altimeter setting. For uncompensated Baro-VNAV systems, LNAV/VNAV NA below -17°C (2°F) or above 54°C (130°F). DME/DME RNP-0.3 NA. When local altimeter setting not received, use Orange City altimeter setting and increase LPV DA to 1510 feet, LNAV/VNAV DA to 1774 feet and LNAV/VNAV all Cats visibility ¼ mile; increase all MDA 80 feet and LNAV Cat C and Circling Cat C visibility ¼ mile. VDP NA with Orange City altimeter setting.

**MISSED APPROACH:** Climb to 4500 direct JAGBU and on track 133° to FEXAT and hold.

AWOS-3P <b>120.975</b>	SIoux CITY APP CON * <b>124.6 307.0</b>	UNICOM <b>122.8 (CTAF) 0</b>
---------------------------	--	---------------------------------



4500	JAGBU	tr 133°	FEXAT	VGSI and RNAV glidepath not coincident (VGSI Angle 3.00/TCH 26).
* LNAV only	ATUXE 2.1 NM to RW18	* 1.4 NM to RW18	CREEC 3000	ETNOE 4 NM Holding Pattern
			1900*	005° 4000
			185°	185°
			3000	GP 3.00° TCH 40
			1.4 NM	0.7 NM
			3.5 NM	6.3 NM
CATEGORY	A	B	C	D
LPV DA	1447-1	250 (300-1)		NA
LNAV/VNAV DA	1711-1¾	514 (600-1¾)		NA
LNAV MDA	1660-1	463 (500-1)	1660-1¾ 463 (500-1¾)	NA
CIRCLING	1760-1 563 (700-1)	1820-1 623 (700-1)	1820-1¾ 623 (700-1¾)	NA

LE MARS, IOWA

Amdt 1B 15OCT15

42°47'N-96°12'W

# **RNAV (GPS) RWY 18** LE MARS MUNI (L.R.J)

NC-3, 18 JUN 2020 to 16 JUL 2020

NC-3, 18 JUN 2020 to 16 JUL 2020

WAAS CH <b>78415</b> <b>W18A</b>	APP CRS <b>185°</b>	Rwy Idg TDZE Apt Elev	<b>4305</b> <b>1197</b> <b>1197</b>
--	------------------------	-----------------------------	---

RNAV (GPS) RWY 18

LE MARS MUNI (LRJ)

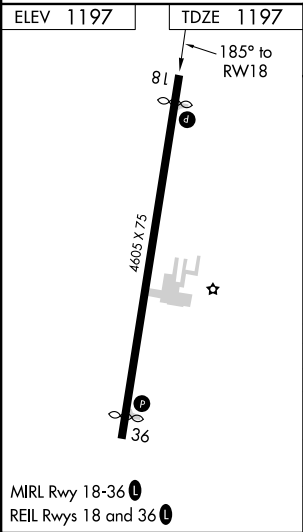
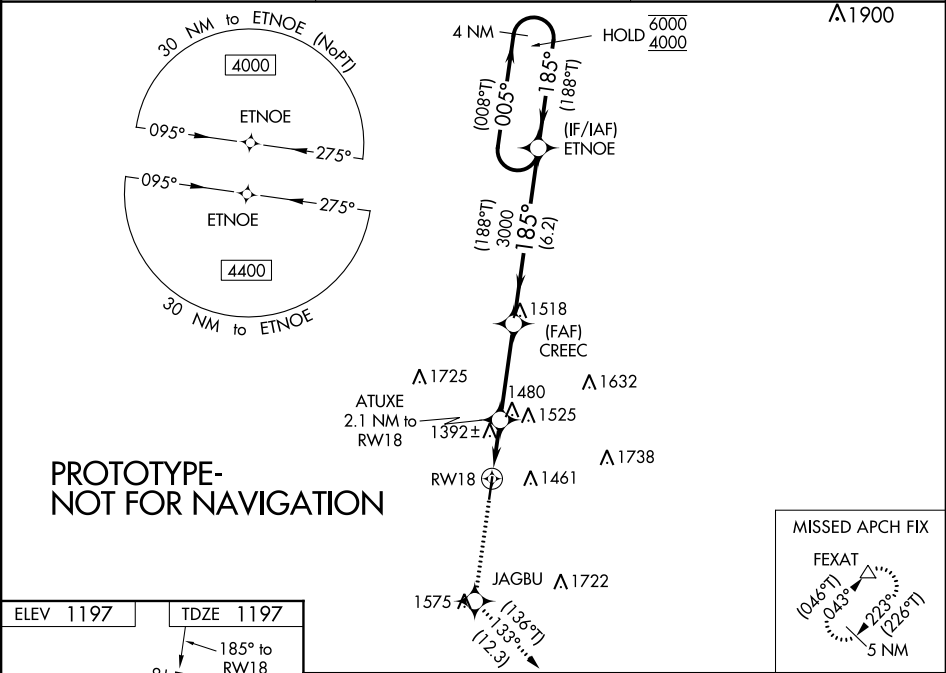
RNP APCH.

Rwy 18 helicopter visibility reduction below  $\frac{3}{4}$  SM NA. For uncompensated Baro-VNAV systems, LNAV/VNAV NA below -17°C or above 54°C.

-24°C

MISSED APPROACH: Climb to 4500 direct JAGBU and on track 133° to FEXAT and hold.

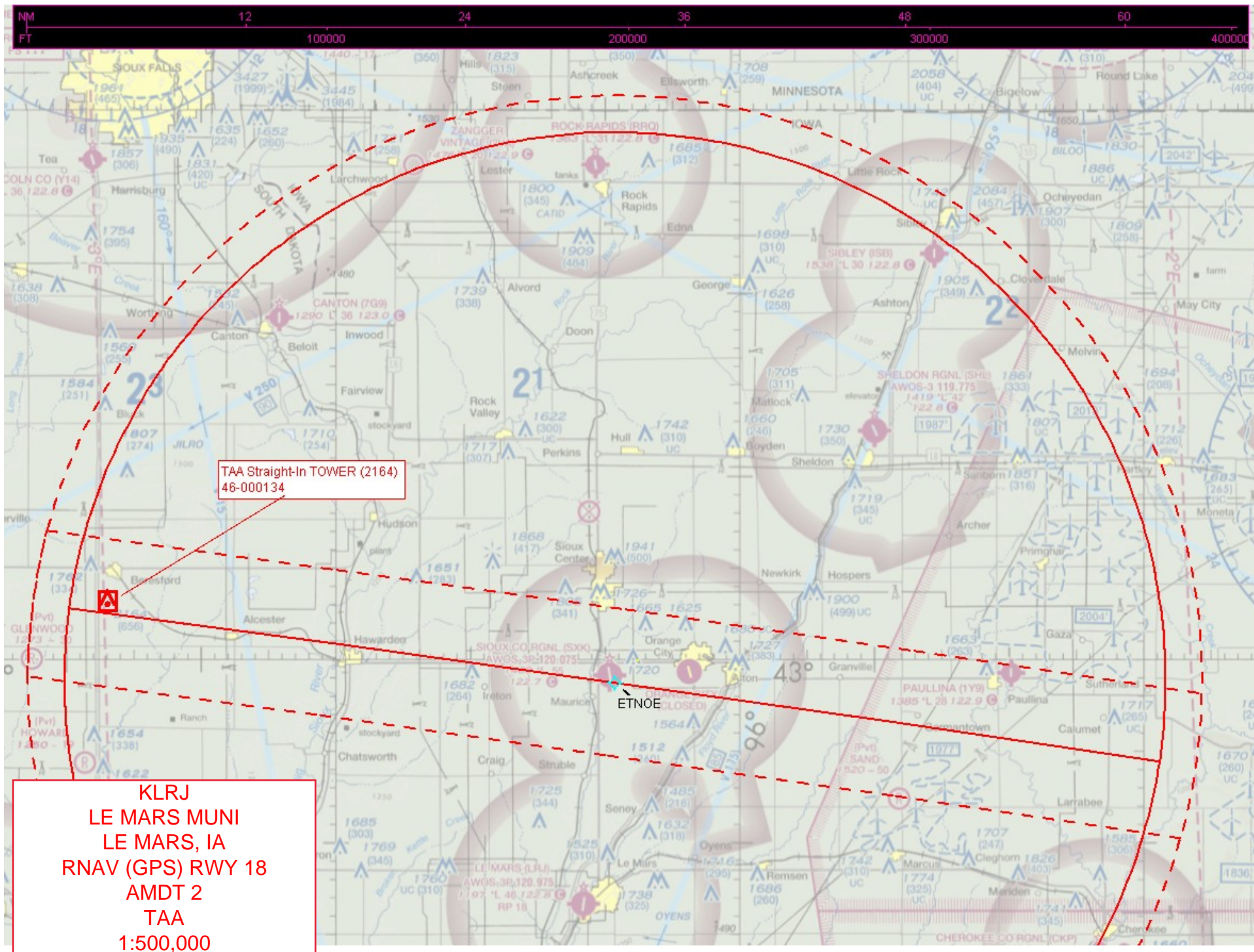
AWOS-3P <b>120.975</b>	SIOUX CITY APP CON * <b>124.6 307.0</b>	UNICOM <b>122.8 (CTAF) 0</b>
---------------------------	--	---------------------------------



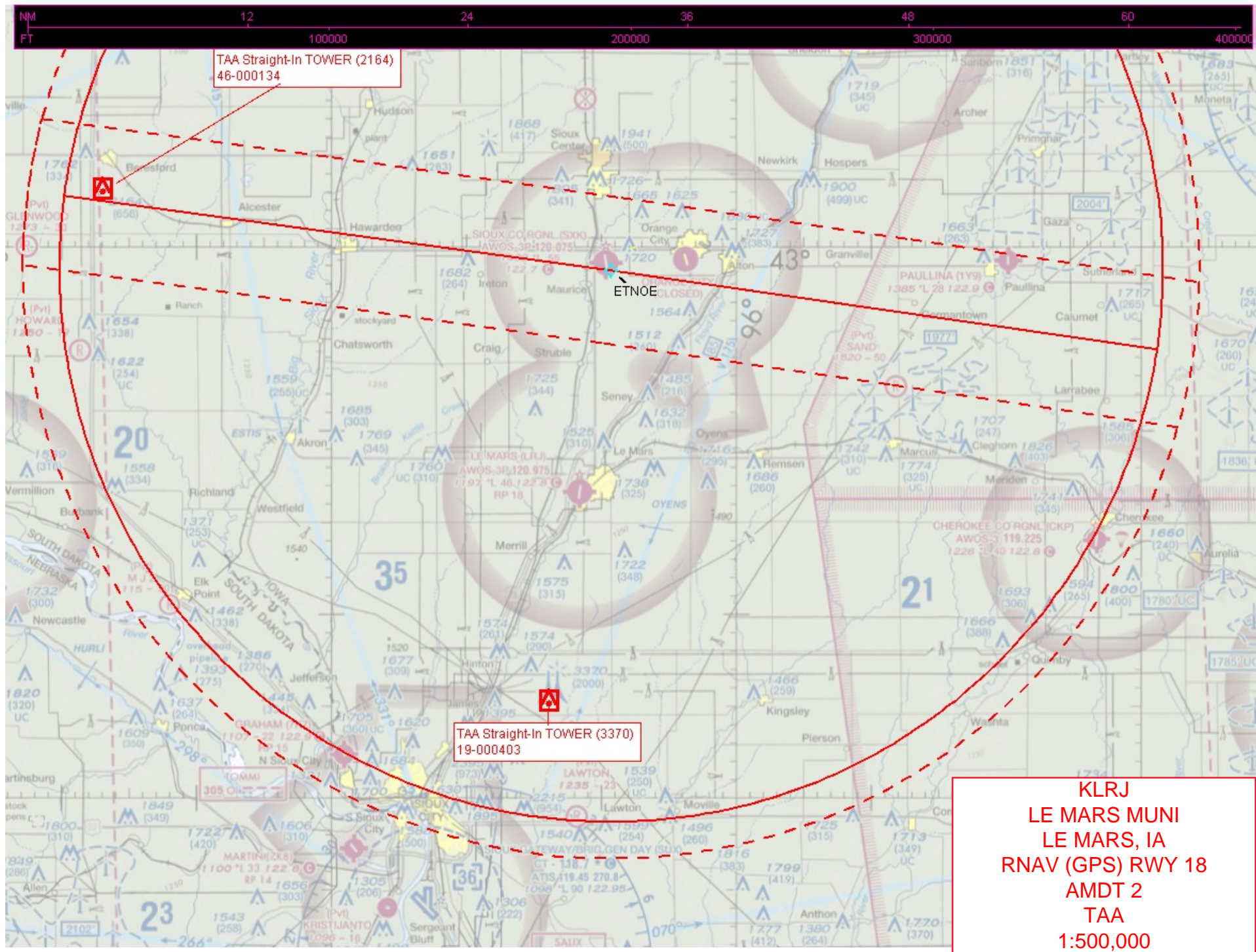
4500	JAGBU	tr 133°	FEXAT	4 NM Holding Pattern
* LNAV only	ATUXE 2.1 NM to RW18	CREEC 3000	ETNOE	(008°T) 005° 6000
	* 1.3 NM to RW18	1900*		185° 4000 (188°T)
	-1.3 NM	-0.8 NM	-3.5 NM	-6.2 NM
CATEGORY	A	B	C	D
LPV DA	1479-1	282 (300-1)		NA
LNAV/VNAV DA	1691-1 $\frac{3}{8}$	494 (500-1 $\frac{3}{8}$ )		NA
LNAV MDA	1660-1	463 (500-1)	1660-1 $\frac{3}{8}$ 463 (500-1 $\frac{3}{8}$ )	NA
CIRCLING	1760-1 563 (600-1)	1780-1 583 (600-1)	1840-1 $\frac{3}{4}$ 643 (700-1 $\frac{3}{4}$ )	NA

LE MARS MUNI (LRJ)

RNAV (GPS) RWY 18









KLRJ  
LE MARS MUNI  
LE MARS, IA  
RNAV (GPS) RWY 18  
AMDT 2  
LPV FINAL  
1:500,000

ETNOE\_1 TOWER (1941)  
19-001315

Intermediate ETNOE to PFAF3 TERRAIN+AAO (1615)  
TP0

CREEC [UD]

LPV TREE (1285)  
19-057490

Missed LPV HAT TREE (1285)  
19-057490

Missed Level Surface TERRAIN+AAO (1638)  
TPMA380

FEXAT TERRAIN+AAO (1654)  
TerrainPoint T6P72974

SALIX  
414 SU 1:1



