

Flight Procedures Cover Page	Task Action: P-NOTAM	Task Type: IAP	Estimated Chart Date: 07/14/2022	APWS Task ID: CBC0444FBD204D3BB1A97E30FBECE027	APWS Project ID: 5056D2BCBF29485AB8CE368653CDFA9D
Procedure: ILS Z OR LOC Z RWY 25 AMDT 9B		Enroute: NO	Specialist: Thibodeaux, Charles		Agreement Number:
Airport ID: KTOL			Airport City: TOLEDO		State: OH
Facility ID: BQE	Facility Type: ILS	Flight Inspection Remark Type:			
<p>Procedure Comments: P-NOTAM          PROCESSED IAW TECHNICAL SUPPORT GROUP (AJF-17) MEMO DATED 07/07/2021, SUBJECT: GUIDANCE FOR PROCEDURAL CHANGES REQUIRING FLIGHT INSPECTION/VALIDATION          CANCELS T-NOTAM FDC 1/3480          CONTACT JASON KRETSCHMER 405.954.4019</p> <p style="text-align: center;"><i>Digitally signed by</i>  <b>JASON KRETSCHMER</b>          May 31, 2022</p>					

QUALITY  
26  
CHECKED

QUALITY  
38  
CHECKED

LOC/DME FREQ <b>108.7</b> Chan <b>24</b>	APP CRS <b>252°</b>	Rwy Idg <b>10600</b> TDZE <b>678</b> Apt Elev <b>683</b>
--	------------------------	--

ILS Z or LOC Z RWY 25  
EUGENE F KRANZ TOLEDO EXPRESS (TOL)

RADAR required for procedure entry. DME, RNAV 1-GPS required.

**T** For inop ALS, increase S-ILS 25 Cat E visibility to RVR 4000, and S-LOC 25  
**A** Cat E visibility to RVR 5000.

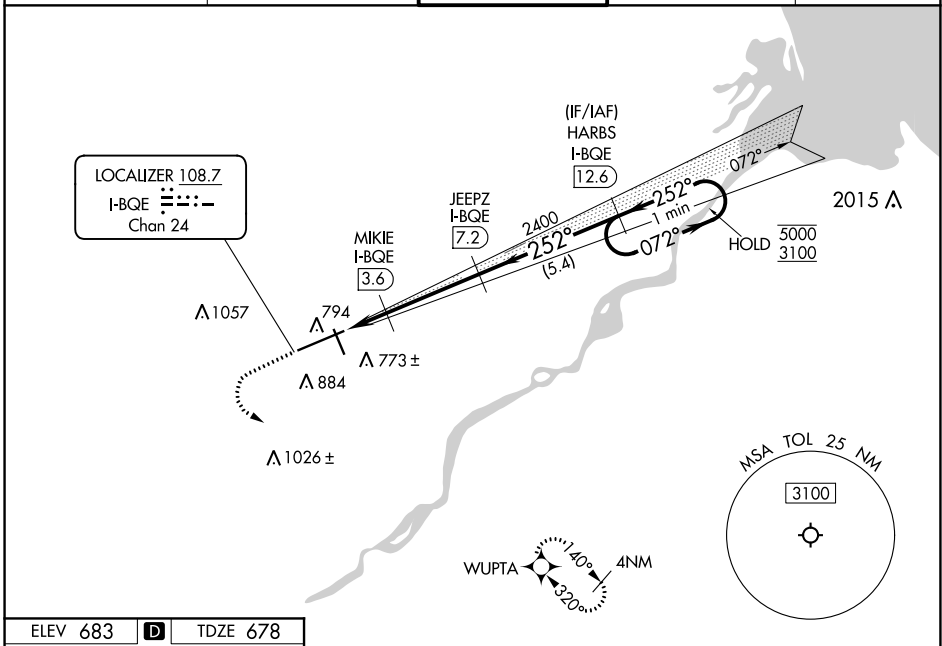
ASR # RVR 1800' authorized with use of FD or AP or HUD to DA.

MALSRL

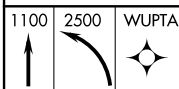
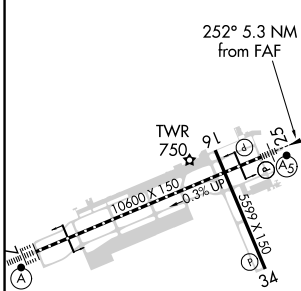


**MISSED APPROACH:** Climb to 1100 then climbing left turn to 2500 direct WUPTA and hold.

ATIS 118.75 290.225	TOLEDO APP CON 134.35 317.55	TOLEDO TOWER 118.1 285.4	GND CON 121.9 348.6	CLNC DEL 121.75 348.6
------------------------	---------------------------------	-----------------------------	------------------------	--------------------------



ELEV 683	<b>D</b>	TDZE 678
----------	----------	----------

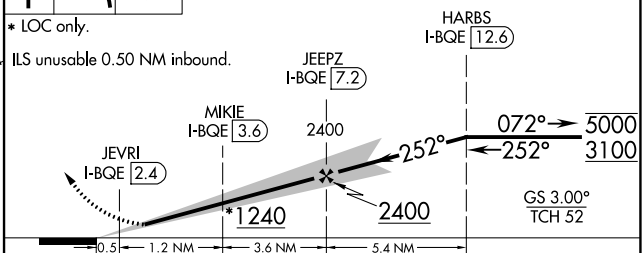


VGSI and ILS glidepath not coincident  
(VGSI Angle 3.00/TCH 69).

### One Minute Holding Pattern

\* LOC only.

ILS unusable 0.50 NM inbound.



CATEGORY	A	B	C	D	E
S-ILS 25 #	878/24 200 (200-½)				
S-LOC 25	1000/24 322 (400-½)		1000/26 322 (400-½)		
<b>C</b> CIRCLING	1200-1	517 (600-1)	1300-1¼ 617 (700-1¼)	1360-2¼ 677 (700-2¼)	1360-2½ 677 (700-2½)

TDZ/CL Rwy 7  
HIRL Rwy 7-25  
MIRL Rwy 16-34  
REIL Rwy 16 and 34

TOLEDO, OHIO

Amdt 9A 05NOV20

EUGENE F KRAVZ TOLEDO EXPRESS (TOL)

41°35'N-83°48'W

ILS Z or LOC Z RWY 25

EC-2, 24 FEB 2022 to 24 MAR 2022