

Flight Procedures Cover Page	Task Action: P-NOTAM	Task Type: IAP	Estimated Chart Date: 04/20/2023	APWS Task ID: CB6F8900059241F9825860BB972AAC96	APWS Project ID: EB268E46435D4795B24E7CEFE5ECBF6A
Procedure: RNAV (GPS) RWY 6 AMDT 2C		Enroute: NO	Specialist: Dougherty, Steven		Agreement Number:
Airport ID: KUNV			Airport City: STATE COLLEGE		State: PA
Facility ID:	Facility Type:	Flight Inspection Remark Type:			
<div>Procedure Comments: PROCESSED IAW TECHNICAL SUPPORT GROUP (AJF-17) MEMO DATED 07/07/2021, SUBJECT: GUIDANCE FOR PROCEDURAL CHANGES REQUIRING FLIGHT INSPECTION/VALIDATION.  REASON FOR PROJECT: PNOTAM  DELETE FDC 2/8233 WHEN PNOTAM IS PUBLISHED  ACTIVE AIRPORT DATA USED.  CONTACT JASON E. KRETSCHMER, AJV-A421, 405-954-4019.  <div>Digitally signed by <b>JASON KRETSCHMER</b> Mar 01, 2023</div></div>					
<div><div>QUALITY 41 CHECKED</div><div>QUALITY 34 CHECKED</div></div>					

WAAS CH <b>87109</b> <b>W06A</b>	APP CRS <b>064°</b>	Rwy Idg TDZE Apt Elev	<b>6701</b> <b>1231</b> <b>1231</b>
--	------------------------	-----------------------------	---



**RNAV (GPS) RWY 6**  
UNIVERSITY PARK (UNV)

RNP APCH.

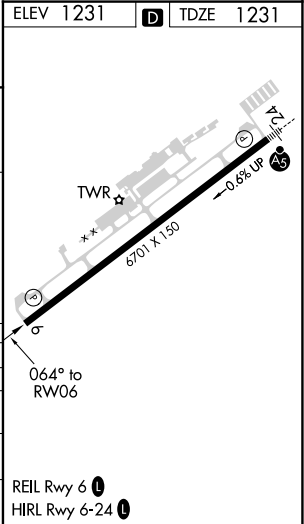
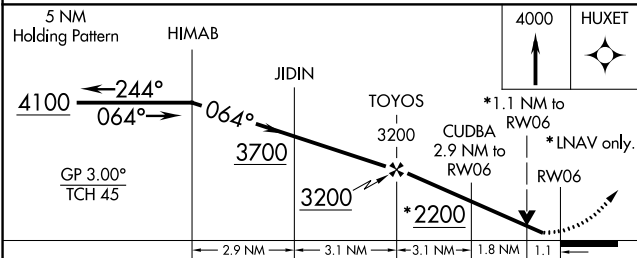
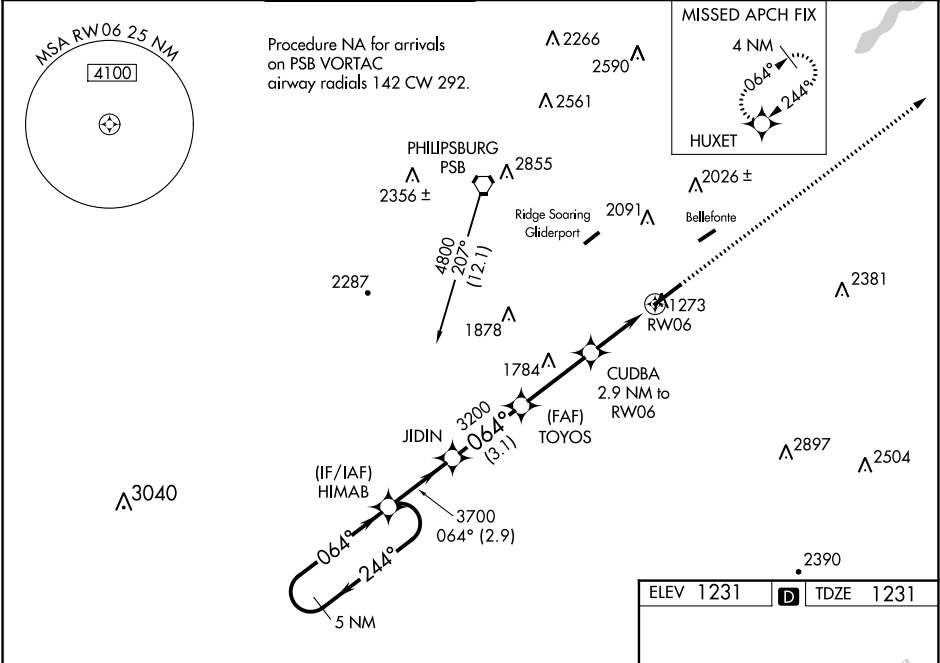
For uncompensated Baro-VNAV systems, LNAV/VNAV NA below -17°C (2°F) or above 54°C (130°F).

⚠ Circling NA NW of Rwy 6-24. Baro-VNAV and VDP NA when using Clearfield altimeter setting.

⚠ When local altimeter setting not received, use Clearfield altimeter setting: increase LPV DA to 1537 feet, LNAV/VNAV DA to 1626 feet and all visibilities ½ SM; increase all MDAs 120 feet and visibility LNAV Cats C/D ¾ SM and Circling Cat C ½ SM.

MISSED APPROACH:  
Climb to 4000 direct HUXET and hold.

D-ATIS <b>127.65</b>	NEW YORK CENTER <b>134.8 338.3</b>	UNIVERSITY PARK ★ <b>128.475</b> (CTAF) <b>0</b>	GND CON <b>125.725</b>	CLNC DEL <b>125.725</b>	CLNC DEL <b>118.55</b> (When twr closed)	UNICOM <b>122.95</b>
-------------------------	---------------------------------------	---	---------------------------	----------------------------	--	-------------------------



CATEGORY	A	B	C	D
LPV DA		1431-¾	200 (200-¾)	
LNAV/VNAV DA		1520-1	289 (300-1)	
LNAV MDA	1640-1	409 (500-1)	1640-1⅛	409 (500-1⅛)
CIRCLING	1640-1 409 (500-1)	1700-1 469 (500-1)	1940-2 709 (800-2)	2580-3 1349 (1400-3)

NE-4, 23 FEB 2023 to 23 MAR 2023

NE-4, 23 FEB 2023 to 23 MAR 2023