

Flight Procedures Cover Page	Task Action: Abbreviated Amendment	Task Type: IAP	Estimated Chart Date: 10/02/2025	APWS Task ID: C9FFBB2F5E6845C3B702BEA4948D64BD	APWS Project ID: 0CAC875D54654DD8801AC78D43F7D521
Procedure: RNAV (GPS) RWY 22		Enroute: NO	Specialist: Heiderstadt, Nicholas		Agreement Number:
Airport ID: KCJR			Airport City: CULPEPER		State: VA
Facility ID:	Facility Type:	Flight Inspection Remark Type:			
<div>Procedure Comments: ABBREV AMDT FOR REMOVAL OF CHART NOTE: STRAIGHT-IN RWY 4 AT NIGHT, CIRCLING RWY 4, 22 AT NIGHT, OPERATIONAL VGSI REQUIRED, REMAIN ON OR ABOVE VGSI GLIDEPATH UNTIL THRESHOLD. CONTACT DAVE DANNER 405-954-5077</div> <div>QUALITY 10 CHECKED</div>					

WAAS CH <b>56306</b> <b>W22A</b>	APP CRS <b>218°</b>	Rwy Idg TDZE <b>315</b> Apt Elev <b>316</b>
--	------------------------	---

RNAV (GPS) RWY 22

CULPEPER RGNL (CJR)

RNP APCH - GPS.

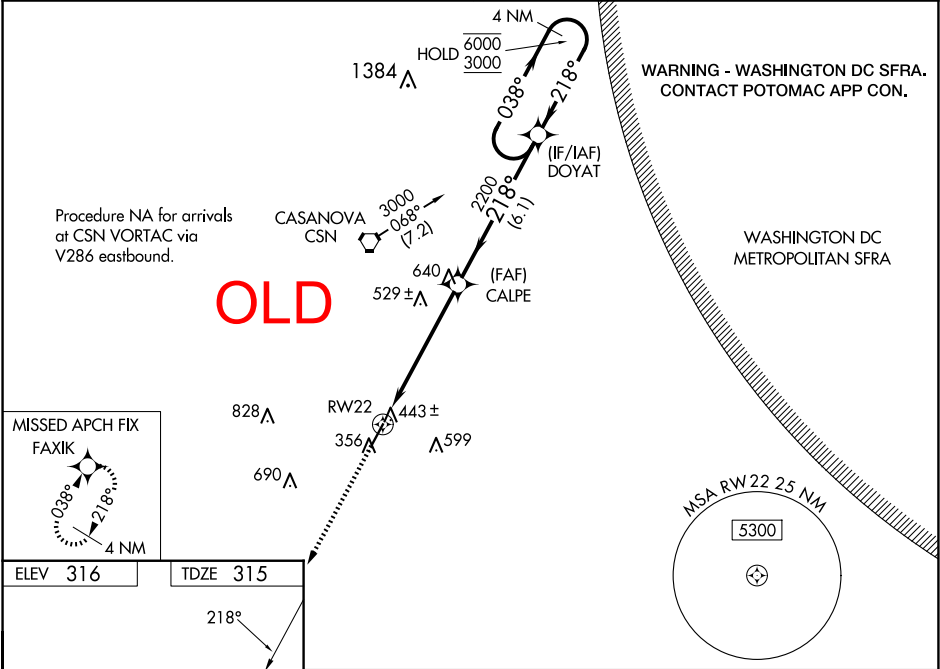
▼

▲

Rwy 22 helicopter visibility reduction below 1 SM NA. Baro-VNAV NA when using IAD altimeter setting. For uncompensated Baro-VNAV systems, UNAV/VNAV NA below -15°C or above 48°C. When local altimeter setting not received, use IAD altimeter setting and increase LPV DA to 730 feet; increase UNAV/VNAV DA to 776 feet; increase all MDAs 80 feet and visibility Cats C ¼ SM and D ½ SM. Straight-in Rwy 22 at night, Circling Rwy 4, 22 at night, operational VGSI required, remain on or above VGSI glidepath until threshold.

MISSED APPROACH:  
Climb to 3000 direct FAXIK and hold.

AWOS-3 <b>119.325</b>	POTOMAC APP CON <b>128.525 306.925</b>	CLNC DEL <b>121.6</b>	UNICOM <b>123.075 (CTAF) 0</b>
--------------------------	---	--------------------------	-----------------------------------



5000 X 100

4

22

MIRL Rwy 4-22

REIL Rwy 4 and 22

3000

↑

FAXIK

✴

DOYAT

4 NM Holding Pattern

038° → 6000

← 218° 3000

GP 3.00° TCH 40

CALPE

218°

2200

5.7 NM

6.1 NM

RW22

22

CATEGORY	A	B	C	D
LPV DA	657-1¼ 342 (400-1¼)			
INAV/VNAV DA	703-1½ 388 (400-1½)			
INAV MDA	800-1	485 (500-1)	800-1¼ 485 (500-1¼)	800-1½ 485 (500-1½)