

Flight Procedures Cover Page	Task Action: FLIGHT CHECK	Task Type: IAP	Estimated Chart Date: 09/05/2024	APWS Task ID: C9FB783C614940DA9EF7CC63FFDF1AD8	APWS Project ID: 71DEC8BD975248E0BC1C0930BA477530
Procedure: RNAV (GPS) RWY 11 AMDT 1		Enroute: NO	Specialist: Neidigh, Jon		Agreement Number:
Airport ID: PACM			Airport City: SCAMMON BAY		State: AK
Facility ID:	Facility Type:	Flight Inspection Remark Type: New FC Slot			

Procedure Comments:
PENDING AIRPORT AND RUNWAY DATA USED FOR PACM.
AIRPORT MAGVAR CHANGED FROM E12/2010 TO E8/2025; RUNWAYS CHANGED FROM 10/28 TO 11/29
ADDED FIXES CATMU, KINWA, ZATEV; CANCELLED FIXES RESVE, SOCOY
CHANGED MISSED APPROACH INSTRUCTIONS PER ATC/FPT REQUEST
CONTACT CASIMIR TABAKA (405)954-7931

Digitally signed by
JOSEPH L ZEDER
Jul 25, 2024



FIPC BASIC FORM						
PROCEDURE: RNAV (GPS) RWY 11 AMDT 1			AIRPORT NAME: SCAMMON BAY		AIRPORT ID: PACM	SPECIAL CONTROL NO: KG-06-159-24
FAC ID: PACM11.01		CITY: SCAMMON BAY			ST: AK	ORIG CHART DATE: 09/05/2024
DFL TYPE: PROC/W	THIRD PARTY: <input type="checkbox"/> YES	EST. TIME ON SITE: 0.4	REIMB. NUMBER: AC0598	PTS TASK ID: C9FB783C614940DA9EF7CC63FFDF1AD8		
PREFLIGHT NOTES						
REVIEWER: robert t perkins					DATE: 07/23/2024	
COMMENTS:					CHECK ONE:	
					<input checked="" type="checkbox"/> FLT CK REQ <input type="checkbox"/> NFCR <input type="checkbox"/> REJECT	
						YES
					CPV COMPLETE?	X
PROCEDURE RESULTS						
INSPECTION DATE: 07/23/2024	CREW #: VN555	N #: N90	INSTRUMENT PROCEDURE STATUS: <input checked="" type="checkbox"/> SAT <input type="checkbox"/> SAT W/CHANGES <input type="checkbox"/> UNSAT		ARINC CODING: <input checked="" type="checkbox"/> SAT <input type="checkbox"/> SAT/GOLD <input type="checkbox"/> UNSAT	
FLIGHT INSPECTOR SIGNATURE: robert t perkins @ 07/23/2024 16:58			PRINTED NAME: PERKINS, ROBERT TAhte			NOTAM INITIATED? <input type="checkbox"/> YES <input checked="" type="checkbox"/> NO
FLIGHT INSPECTOR REMARKS: Sat.						
IN-FLIGHT OBSTACLE REPORT						
OBSTRUCTION ID #:	COORDINATES OR LOCATION:	GNSS ALTITUDE (MSL):	BAROMETRIC ALTITUDE (MSL):		HEIGHT ABOVE GROUND LEVEL:	

WAAS CH 77548 W11A	APP CRS 105°	Rwy Idg TDZE 18 Apt Elev 22	3001
--	------------------------	---	-------------

RNAV (GPS) RWY 11

SCAMMON BAY (SCM) (PACM)

RNP APCH • GPS

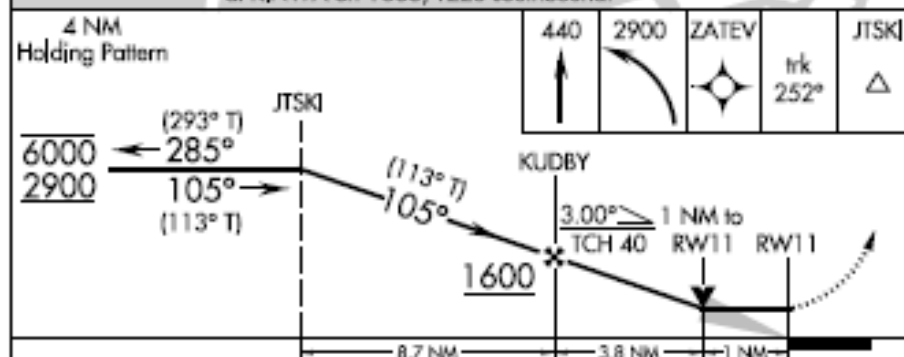
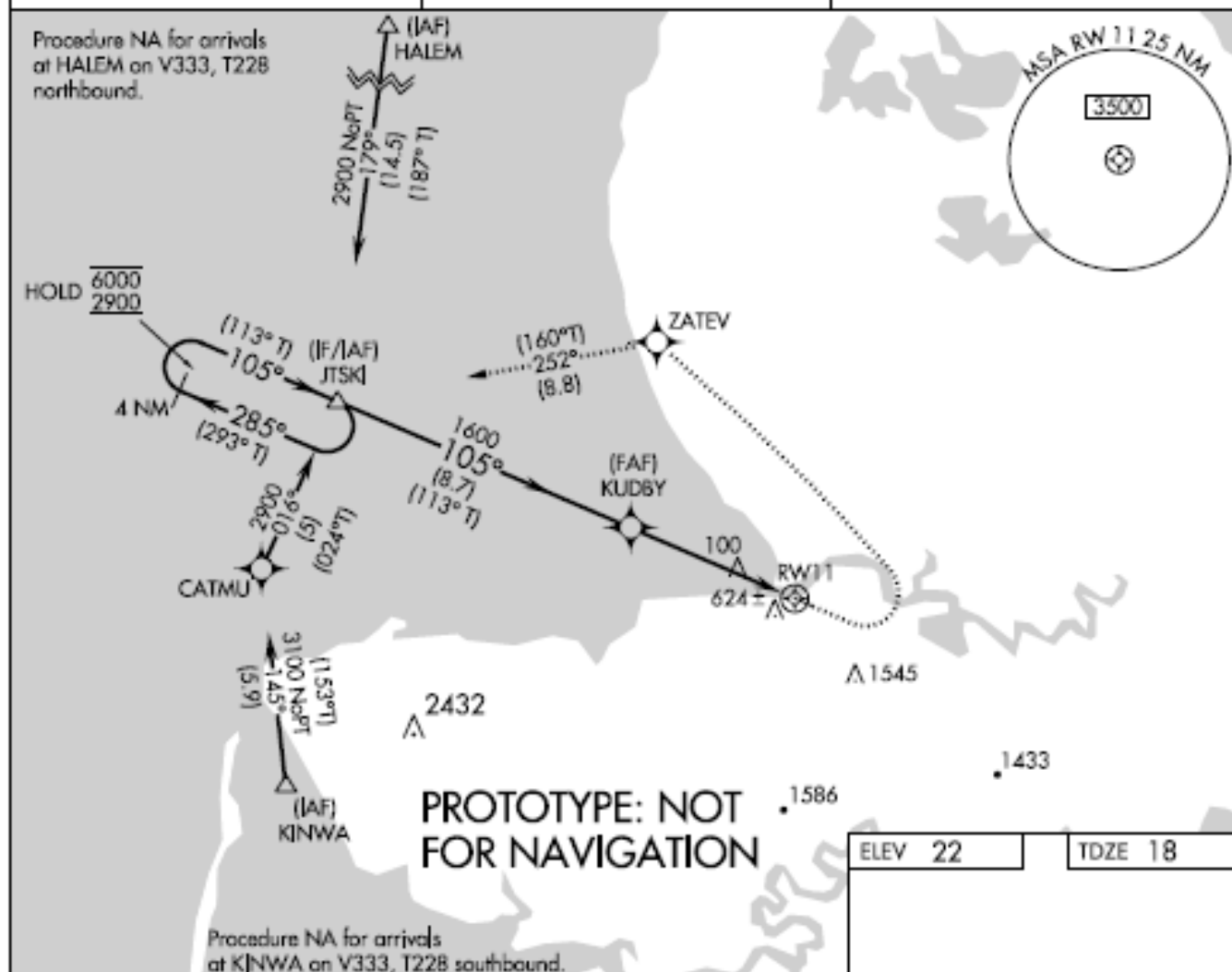


Circling NA south of Rwy 11-29. Circling Rwy 29 NA at night. VDP NA when using Vak/Pava altimeter setting. When local altimeter setting not received, use Vak/Pava altimeter setting and increase all MDAS 60 feet.

-21°C

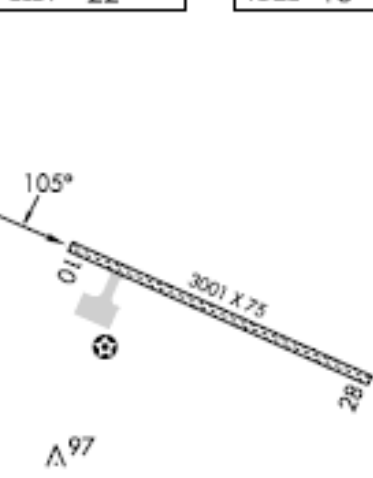
MISSED APPROACH: Climb to 440 then climbing left turn to 2900 direct ZATEV and on track 252° to JTSK and hold.

AWOS-3P 118,425	ANCHORAGE CENTER 124,5	UNCOM 123,0 (CTAF) 0
---------------------------	----------------------------------	--------------------------------



CATEGORY	A	B	C	D
LP MDA	380-1	362 (400-1)	NA	NA
LNAV MDA	1100-1¼ 1082 (1100-1¼)	1100-1½ 1082 (1100-1½)	NA	NA
CIRCLING	1100-1¼ 1078 (1100-1¼)	1100-1½ 1078 (1100-1½)	NA	NA

ELEV 22 TDZE 18



MIRL Rwy 11-29 0

AL-9463 (FAA)

19115

RNAV (GPS) RWY 10

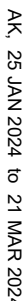
T Circling NA south of Rwy 10-28. DME/DME RNP-0.3 NA. Visibility
A reduction by helicopters NA. VDP NA when using Hooper Bay
☼ -21°C altimeter setting. When local altimeter setting not received, use
 Hooper Bay altimeter setting and increase all MDA 360 feet.

MISSED APPROACH: Climbing left turn to 2900 direct JTSK and hold.

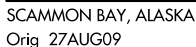
AWOS-3P
118.425

ANCHORAGE CENTER
124.5

UNICOM
123.0 (CTAF) **L**



WEEK 25 JAN 2024 to 21 MAR 2024

SCAMMON BAY (SCM) (PACM)
RNAV (GPS) RWY 10

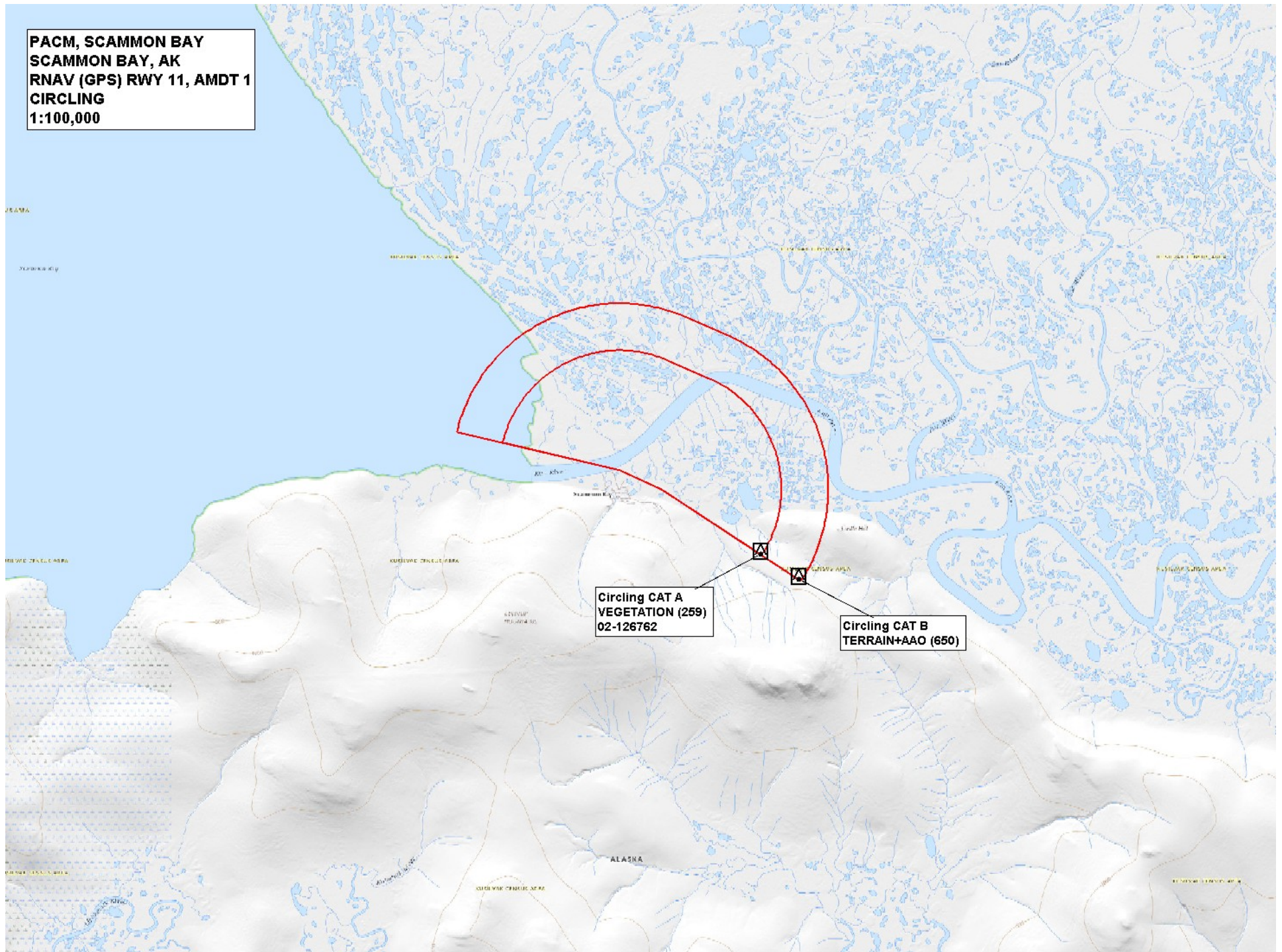
61°51'N-165°34'W

[illegible]

**PACM, SCAMMON BAY
SCAMMON BAY, AK
RNAV (GPS) RWY 11, AMDT 1
CIRCLING
1:100,000**

**Circling CAT A
VEGETATION (259)
02-126762**

**Circling CAT B
TERRAIN+AAO (650)**



PACM, SCAMMON BAY, AK
SCAMMON BAY, AK
RNAV (GPS) RWY 11, AMDT 1
LP
1:100,000

ZATEV

KUDBY

LP KUDBY to PACM:RW11:AER SHIP (100)

Missed Level Surface TERRAIN+AAO (1060)

Missed Pen Obs TERRAIN+AAO (459)

PACM, SCAMMON BAY, AK
SCAMMON BAY, AK
RNAV (GPS) RWY 11, AMDT 1
LP
1:100,000

ZATEV

KUDBY

LP KUDBY to PACM:RW11:AER SHIP (100)

Missed Level Surface TERRAIN+AAO (1060)

Missed Pen Obs TERRAIN+AAO (459)

PACM, SCAMMON BAY, AK
SCAMMON BAY, AK
RNAV (GPS) RWY 11, AMDT 1
LP
1:100,000

ZATEV

KUDBY

LP KUDBY to PACM:RW11:AER SHIP (100)

Missed Level Surface TERRAIN+AAO (1060)

Missed Pen Obs TERRAIN+AAO (459)

PACM, SCAMMON BAY, AK
SCAMMON BAY, AK
RNAV (GPS) RWY 11, AMDT 1
LP
1:100,000

ZATEV

KUDBY

LP KUDBY to PACM:RW11:AER SHIP (100)

Missed Level Surface TERRAIN+AAO (1060)

Missed Pen Obs TERRAIN+AAO (459)

PACM, SCAMMON BAY, AK
SCAMMON BAY, AK
RNAV (GPS) RWY 11, AMDT 1
LP
1:100,000

ZATEV

KUDBY

LP KUDBY to PACM:RW11:AER SHIP (100)

Missed Level Surface TERRAIN+AAO (1060)

Missed Pen Obs TERRAIN+AAO (459)

PACM, SCAMMON BAY, AK
SCAMMON BAY, AK
RNAV (GPS) RWY 11, AMDT 1
LP
1:100,000

ZATEV

KUDBY

LP KUDBY to PACM:RW11:AER SHIP (100)

Missed Level Surface TERRAIN+AAO (1060)

Missed Pen Obs TERRAIN+AAO (459)