

Flight Procedures Cover Page	Task Action: P-NOTAM	Task Type: IAP	Estimated Chart Date: 11/04/2021	APWS Task ID: C9AE23933D054F4CA599F2A40D9EFABA	APWS Project ID: 138020C959204B41A3FEF552923F8892
Procedure: VOR/DME-A AMDT 0B		Enroute: NO	Specialist: Moore, Frank		Agreement Number:
Airport ID: KWEA			Airport City: WEATHERFORD		State: TX
Facility ID:	Facility Type:	Flight Inspection Remark Type:			
<div>Procedure Comments: P-NOTAM This Cancels FDC 0/8081 Order 8260.3, chapter 2, New Circling Criteria Applied. CONTACT DAVE TEFFETELLER 202-267-5177</div> <div><div>QUALITY 9 CHECKED</div><div>QUALITY 18 CHECKED</div></div>					

OLD

WEATHERFORD, TEXAS

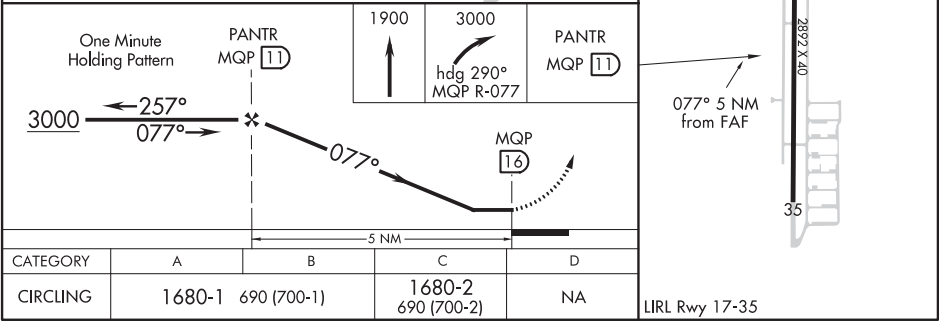
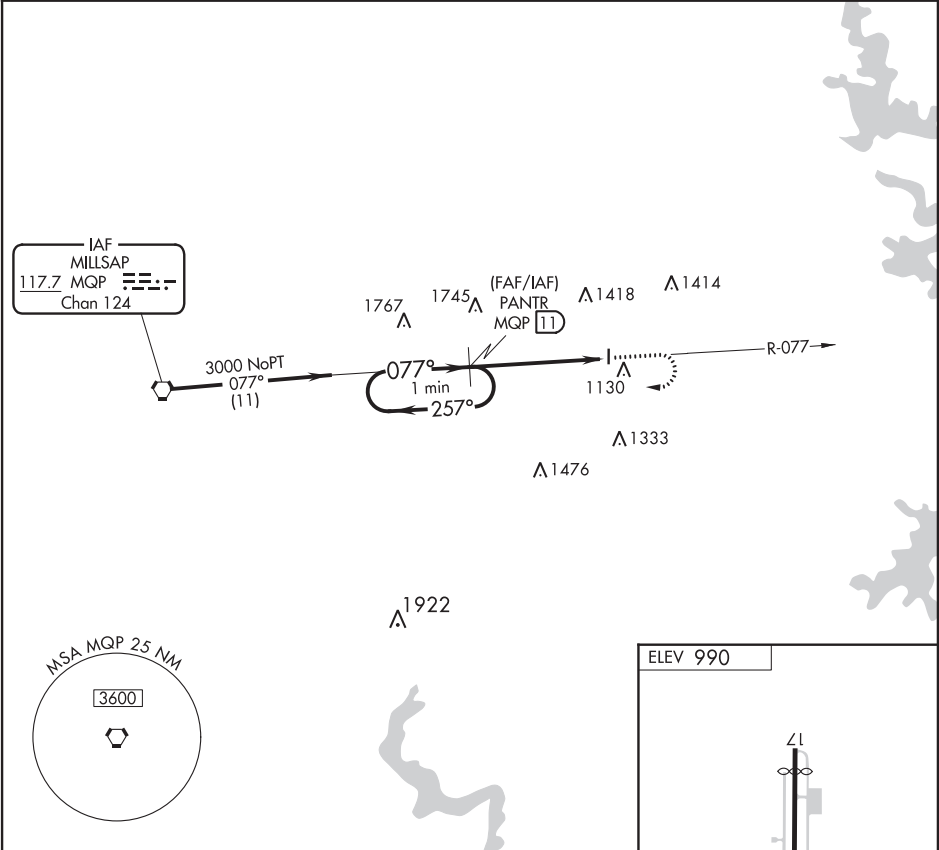
AL-6497 (FAA)

20198

VORTAC MQP <b>117.7</b> Chan <b>124</b>	APP CRS <b>077°</b>	Rwy Idg TDZE Apt Elev <b>N/A</b> <b>N/A</b> <b>990</b>
---	------------------------	---

**VOR/DME-A**  
PARKER COUNTY (WEA)

<b>NA</b> Use Fort Worth Meacham altimeter setting.	MISSED APPROACH: Climb to 1900 then climbing right turn to 3000 via heading 290° and MQP R-077 to PANTR and hold.
REGIONAL APP CON <b>135.975 379.9</b>	UNICOM <b>122.7</b> (CTAF)



WEATHERFORD, TEXAS  
Orig-A 03OCT02  
32°45'N-97°41'W  
PARKER COUNTY (WEA)  
**VOR/DME-A**

