

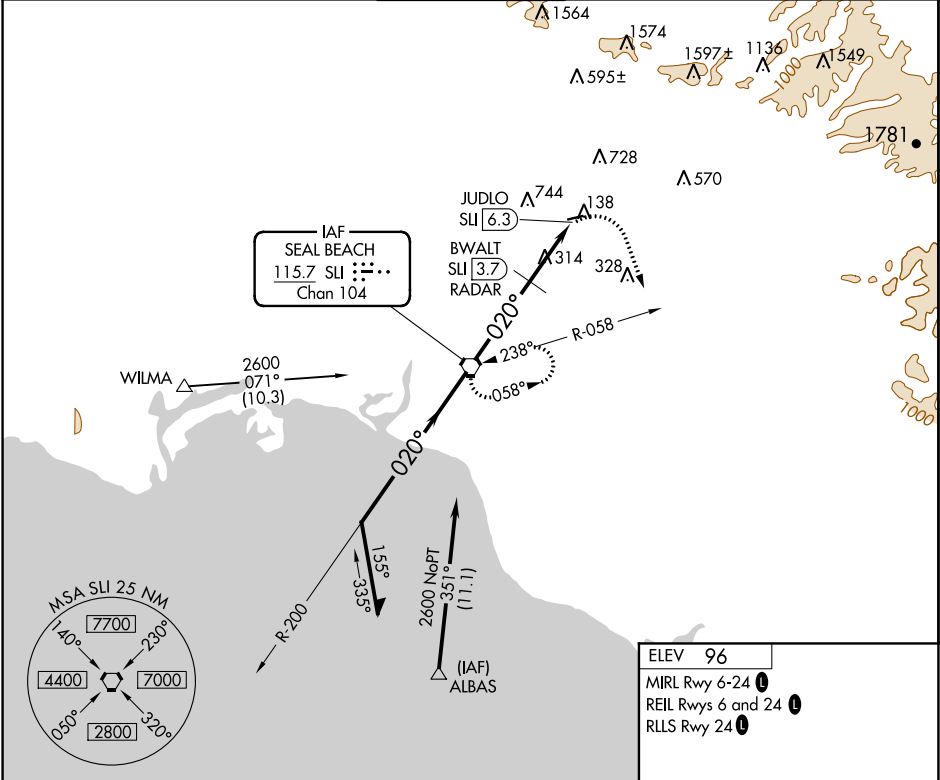
Flight Procedures Cover Page	Task Action: P-NOTAM	Task Type: IAP	Estimated Chart Date: 07/15/2021	APWS Task ID: C8FE63EF05E94090ACB9C77EFFCCE19E	APWS Project ID: 19E7C31DD2EF467C88441711A7F63D79
Procedure: VOR-A AMDT 7C		Enroute: NO	Specialist: Martinez, Rafael		Agreement Number:
Airport ID: KFUL			Airport City: FULLERTON		State: CA
Facility ID:	Facility Type:	Flight Inspection Remark Type:			
<div>Procedure Comments:</div> <div>P-NOTAM.</div> <div>THIS CANCELS FDC 0/0485.</div> <div>ORDER 8260.3, CHAPTER 2, NEW CIRCLING CRITERIA APPLIED.</div> <div>CONTACT: LONNIE EVERHART 405-954-4576/DAVID TEFFETELLER 202-267-5177.</div> <div><div>QUALITY 26 CHECKED</div><div>QUALITY 45 CHECKED</div></div>					

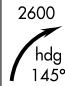
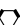
VORTAC SLI <b>115.7</b> Chan <b>104</b>	APP CRS <b>020°</b>	Rwy Idg TDZE Apt Elev <b>N/A</b> <b>N/A</b> <b>96</b>
---	------------------------	--

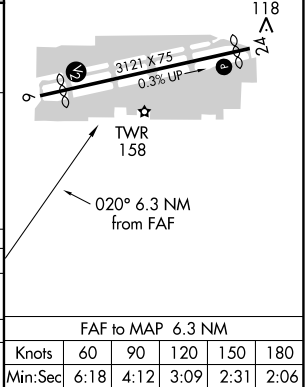
VOR-A  
FULLERTON MUNI (FUL)

<b>▽</b> <b>▲</b>	Maximum entry altitude 6000. Night landing: Rwy 6 NA. Helicopter visibility reduction below 1 SM NA.	MISSED APPROACH: Climbing right turn to 2600 via heading 145° and SLI R-058 to SLI VORTAC and hold.
----------------------	--	---

ATIS <b>125.05</b>	SOCAL APP CON <b>125.35 316.125</b>	FULLERTON TOWER ★ <b>119.1</b> (CTAF) <b>0</b>	GND CON <b>121.8</b>	UNICOM <b>122.95</b>
-----------------------	--	---	-------------------------	-------------------------

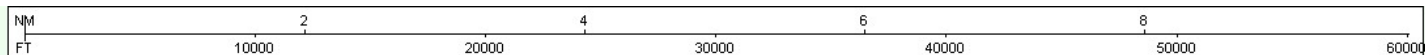


Remain within 10 NM		SLI VORTAC				SLI R-058		SLI 	
2600		200°		020°		2600		2600	
				3.7 NM		2.6 NM			
				BWALT SLI 3.7 RADAR		JUDLO SLI 6.3			
				1500					
CATEGORY		A		B		C		D	
CIRCLING		1500-1¼ 1404 (1500-1¼)		1500-1½ 1404 (1500-1½)		NA			



SW-3, 25 MAR 2021 to 22 APR 2021

SW-3, 25 MAR 2021 to 22 APR 2021



KFUL  
FULLERTON MUNI  
FULLERTON, CA  
VOR-A, AMDT 7C

CIRCLING 1:100,000

Circling CAT A  
TREE (459)

Circling CAT B  
TOWER (744)  
06-020156

