

Flight Procedures Cover Page	Task Action: P-NOTAM	Task Type: IAP	Estimated Chart Date: 11/05/2020	APWS Task ID: C7C5EA3F1C8D4C189ACA83C8ADD41C2	APWS Project ID: DC4EAB3A14C413F8DEBD17A01CB596F
Procedure: RNAV (GPS) RWY 14 AMDT 0B		Enroute: NO	Specialist: McCarthy, Christopher		Agreement Number:
Airport ID: KHII	Airport Name: LAKE HAVASU CITY		Airport City: LAKE HAVASU CITY		State: AZ
Facility ID:	Facility Type:	Flight Inspection Remark Type:			
<div>Procedure Comments: P-NOTAM</div> <div>NEW CIRCLING AREAS</div> <div>PROCESSED IAW AIRCRAFT OPERATIONS GROUP (AJF-10) MEMO, APRIL 29, 2020, SUBJECT: FLIGHT INSPECTION REVIEW NOT REQUIRED.</div> <div>JASON KRETSCHMER, 405-954-4019</div> <div><div>QUALITY 30 CHECKED</div><div>9/1 BBLUE</div><div>QUALITY 15 CHECKED</div></div>					

WAAS CH 53330 W14A	APP CRS 134°	Rwy Idg 8000 TDZE 759 Apt Elev 783
--	------------------------	---

RNAV (GPS) RWY 14

LAKE HAVASU CITY (HII)

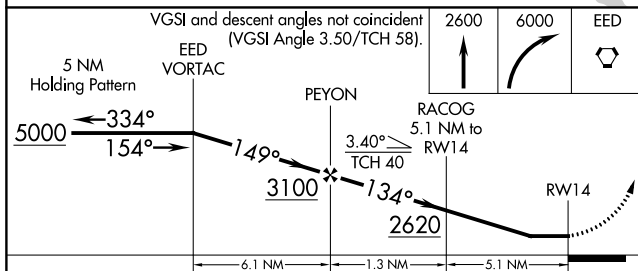
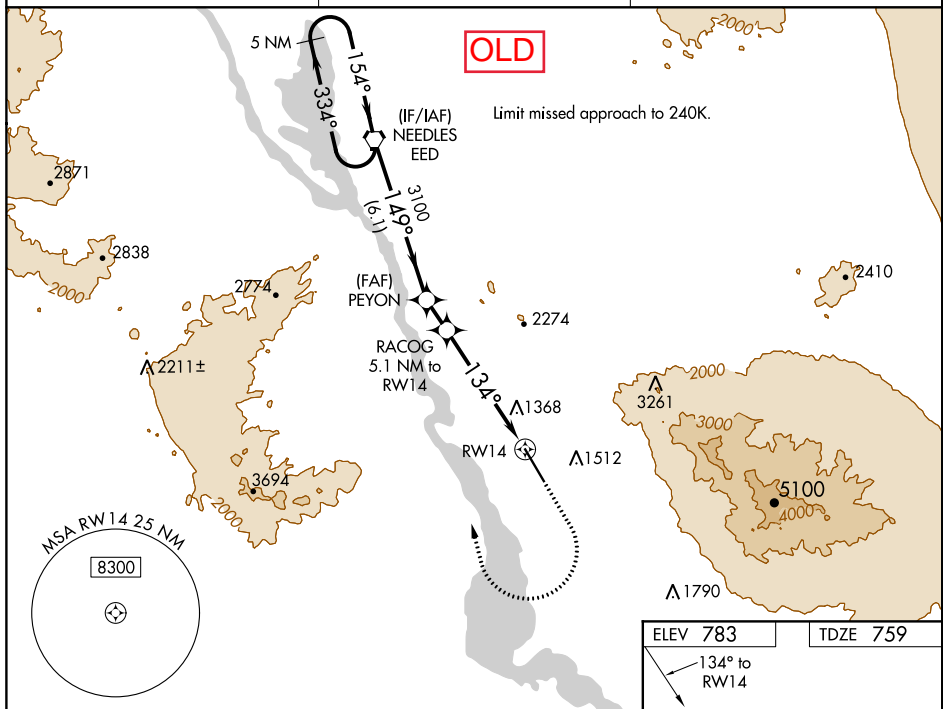
TANA

When local altimeter setting not received, use Needles altimeter setting and increase all MDA 80 feet. Circling NA northeast of Rwy 14-32. DME/DME RNP-0.3 NA. Helicopter visibility reduction below 1 SM NA. When VGSI inop, procedure NA at night.

MISSED APPROACH: Climb to 2600 then climbing right turn to 6000 direct EED VORTAC and hold, continue climb-in-hold to 6000.

AWOS-3
119.025

LOS ANGELES CENTER
134.65 314.2

UNICOM
122.7 (CTAF) **L**

CATEGORY	A	B	C	D
LP MDA	2140-1¼ 1381 (1400-1¼)	2140-1½ 1381 (1400-1½)	2140-3	1381 (1400-3)
LNAV MDA	2320-1¼ 1561 (1600-1¼)	2320-1½ 1561 (1600-1½)	2320-3	1561 (1600-3)
CIRCLING	2320-1¼ 1537 (1600-1¼)	2320-1½ 1537 (1600-1½)	2320-3	1537 (1600-3)

