

Flight Procedures Cover Page	Task Action: Amendment	Task Type: IAP	Estimated Chart Date: 08/13/2020	APWS Task ID: C7B048C4801142C6AE3BD160C12E70AC	APWS Request ID: F0A741BE7BB44A3F8869E286B4430924
Procedure: VOR/DME OR TACAN RWY 3 AMDT 0C		Enroute: NO	Specialist: Roslewski, Russell		Agreement Number:
Airport ID: KSJT	Airport Name: SAN ANGELO RGNL/MATHIS FIELD	Airport City: SAN ANGELO			State: TX
Facility ID:	Facility Type:	Flight Inspection Remark Type:			
<p>Procedure Comments: P-NOTAM</p> <p>New circling areas based on existing procedure at the airport – RNAV (GPS) RWY 3, Amdt 2</p> <p>Processed IAW Aircraft Operations Group (AJW-33) Memo, October 3, 2018, Subject: Flight Inspection Review Not Required.</p> <p>Dave Danner, 405-954-5077</p>					



VOR/DME or TACAN RWY 3
SAN ANGELO RGNL/MATHIS FIELD (SJT)

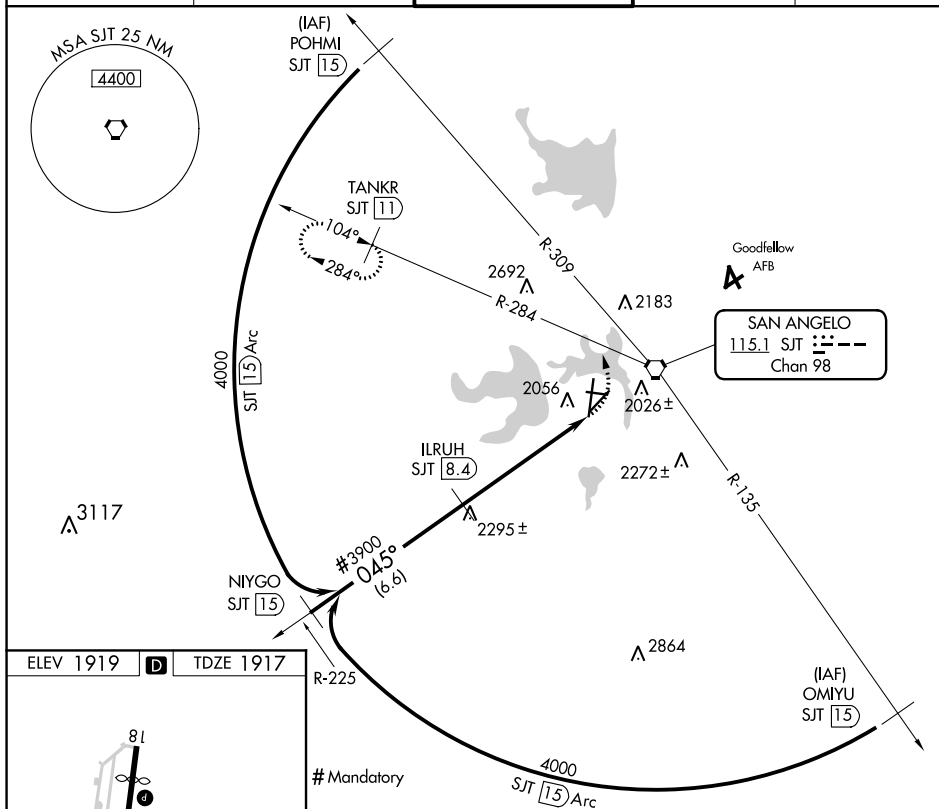


MALSR

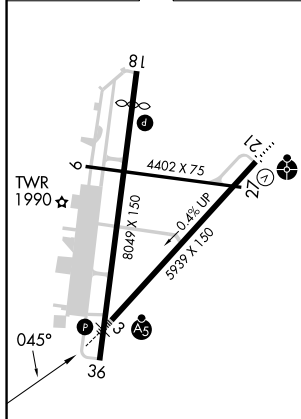
 

MISSED APPROACH: Climbing left turn to 4400 via SJT R-284 to TANKR/11 DME and hold.

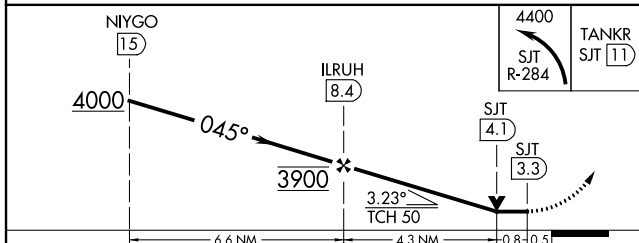
ATIS 128.45 319.0	SAN ANGELO APP CON ★ 125.35 354.1	MATHIS TOWER ★ 118.3(CTAF) 284.7	GND CON 121.9 348.6	UNICOM 122.95
----------------------	--------------------------------------	-------------------------------------	------------------------	------------------



ELEV 1919	D	TDZE 1917
-----------	----------	-----------



REIL Rwy 18 **L**
HIRL Rwy 3-21 **L**
MIRL Rwy 9-27 and 18-36 **L**



CATEGORY	A	B	C	D	E
S-3	2420-1/2	503 (600-1/2)	2420-1	503 (600-1)	2420-1 1/4 503 (600-1 1/4)
CIRCLING*	2460-1	541 (600-1)	2460-1 1/2 541 (600-1 1/2)	2480-2 561 (600-2)	2640-2 1/2 721 (800-2 1/2)

14: FINAL/LNAV: 2354 AAO
 15: STEPDOWN: 2043 TANK (48-124068)
 20: CIRC CAT A/B: 2056 TOWER (48-025384)
 21: CIRC CAT C: 2183 TOWER (48-001287)
 22: CIRC CAT D: 2391 AAO
 23: CIRC CAT E: 2332 AAO

