

Flight Procedures Cover Page	Task Action: Abbreviated Amendment	Task Type: IAP	Estimated Chart Date: 06/17/2021	APWS Task ID: C77458B9AC6D4575A4F45CCCEE8B0EDC	APWS Project ID: 13C1B15A00504EF8946A12C4EF7F4E07
Procedure: ILS OR LOC RWY 22R AMDT 6A		Enroute: NO	Specialist: Dean, Kelly		Agreement Number:
Airport ID: KILN			Airport City: WILMINGTON		State: OH
Facility ID: ILN	Facility Type: ILS	Flight Inspection Remark Type:			
<p>Procedure Comments: MAG/VAR: OLD: 6W 2015 NEW: 7W 2025</p> <p>PROCESSED IAW AIRCRAFT OPERATIONS GROUP (AJF-10) MEMO, APRIL 29, 2020, SUBJECT: FLIGHT INSPECTION REVIEW NOT REQUIRED</p> <p>POC FOR THIS ACTION IS DON LANIER 405-954-8242</p>					

QUALITY
20
CHECKED

Digitally signed by **MARY MCDONALD** 12
Mar 08, 2021

QUALITY
12
CHECKED

LOC I-ILN 110.7	APP CRS 223°	Rwy Idg 10701 TDZE 1077 Apt Elev 1077
---------------------------	------------------------	--

ILS or LOC RWY 22R
WILMINGTON AIR PARK (ILN)

DME or RADAR required for procedure entry.
ADF or DME required for LOC only.

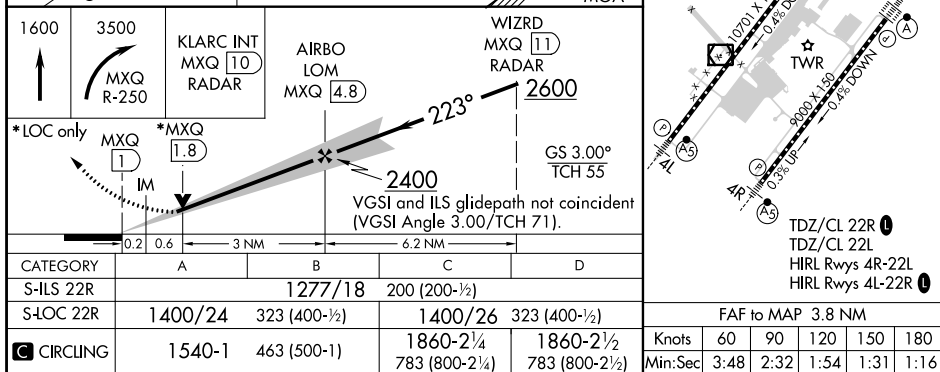
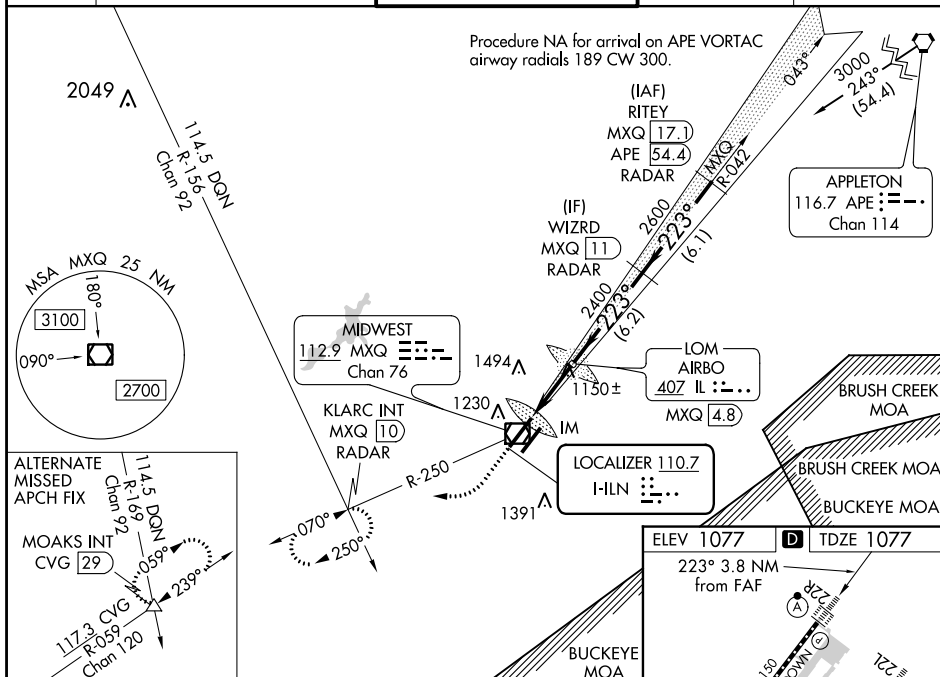
T Simultaneous approach authorized. VDP NAL with James M Cox Dayton IL altimeter setting. When local altimeter setting not received, use James M Cox Dayton IL altimeter setting: increase DA to 1367 feet and all visibilities to RVR 2200; increase all MDA 100 feet and S-L0C 22R visibility Cat C/D to RVR 4000 and Circling Cat C/D $\frac{1}{2}$ SM. For enroute ALS when using James M Cox Dayton IL altimeter setting, increase S-ILS 22R all Cats visibility to RVR 4500 and S-L0C 22R Cats C/D visibility to $\frac{1}{4}$ SM. DME from MXQ VOR/DME. Simultaneous reception of IJLN and MXQ DME required.

ALSF-2



MISSED APPROACH:
Climb to 1600 then
climbing right turn to
3500 on MXQ VOR/
DME R-250 to KLARC
INT/MXQ 10 DME/
RADAR and hold,
continue climb-in-hold
to 3500.

ATIS 124.925	COLUMBUS APP CON 118.85 269.275	WILMINGTON TOWER ★ 119.475 (CTAF) 0	GND CON 121.6	CLNC DEL 128.85
------------------------	---	---	-------------------------	---------------------------



LOC I-ILN 110.7	APP CRS 223°	Rwy Idg 10701 TDZE 1077 Apt Elev 1077
---------------------------	------------------------	--

ILS RWY 22R (CAT II & III)
WILMINGTON AIR PARK (ILN)

DME or RADAR required for procedure entry.



Simultaneous approach authorized.
 Procedure NA when control tower closed.
 DME from MXQ VOR/DME.
 Simultaneous reception of I-ILN and MXQ DME required.

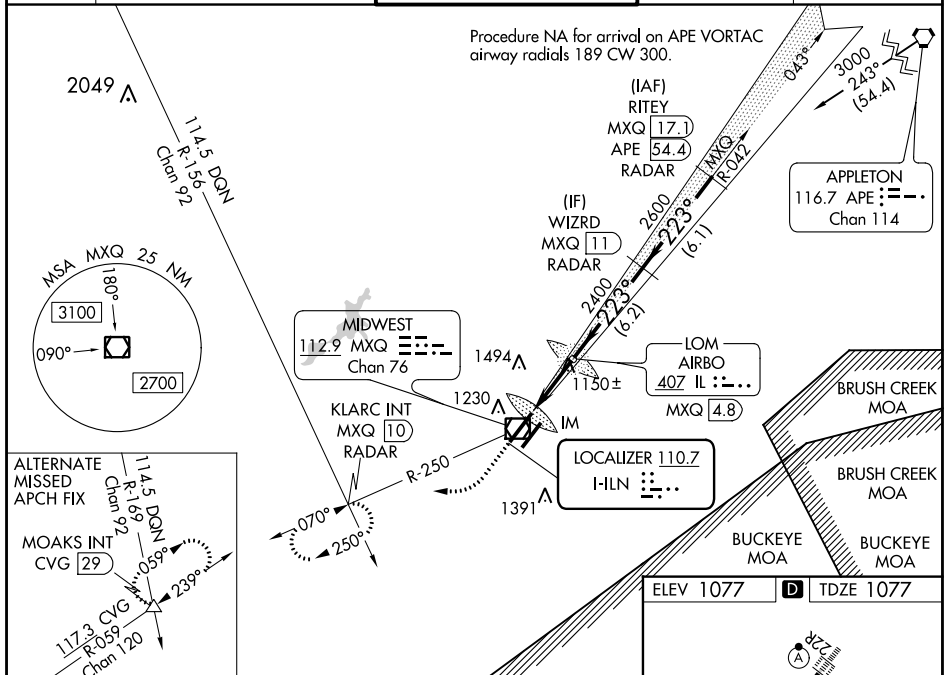
ALSF-2



MISSED APPROACH: Climb to 1600 then climbing right turn to 3500 on MXQ VOR/DME R-250 to KLARC INT/MXQ 10 DME/RADAR and hold, continue climb-in-hold to 3500.

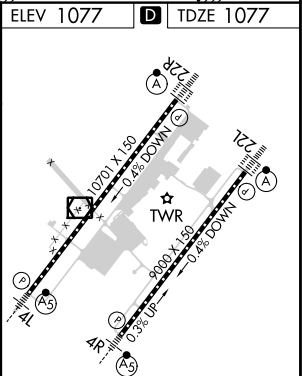
ATIS 124.925	COLUMBUS APP CON 118.85 269.275	WILMINGTON TOWER ★ 119.475 (CTAF) 0	GND CON 121.6	CLNC DEL 128.85
------------------------	---	---	-------------------------	---------------------------

Procedure NA for arrival on APE VORTAC
airway radials 189 CW 300.



1600 ↑	3500 ↻ MXQ R-250	KLARC INT MXQ <u>10</u> RADAR	VGSJ and ILS glidepath not coincident (VGSJ Angle 3.00°/TCH 71).		WIZRD INT MXQ <u>11</u> RADAR
		IM 925 223° 2400 2600 GS 3.00° TCH 55			
CATEGORY	A	B	C	D	
S-ILS 22R	CAT II RA 106/12 100 DA 1177				
S-ILS 22R	CAT III RVR 06				

CATEGORY II & III ILS - SPECIAL AIRCREW
& AIRCRAFT CERTIFICATION REQUIRED



TDZ/CL 22R **L**
TDZ/CL 22L
HIRL Rwy 4R-22L
HIRL Rwy 4L-22R **L**



Federal Aviation Administration

Initial Development Notification for AIRNAV Pending Records

To: Casimir Tabaka, Manager Aeronautical Data, Sub-Team B, AJV-A312

From: Julie Morgan, Manager IFP Coordination Team, AJV-A41

Subject: **ACTION:** Request for Pending Records **KILN___WILMINGTON AIR PARK, , OH US**

The Magnetic Variation (MV) data for the airport(s) and/or facility(s) listed will be revised effective concurrent with the publication of the procedure(s) listed below. Estimated Chart Date: **6/17/2021**

Current/Assigned MV **W 4 1985** New MV **W 7 2025**

ECD	Airport ID	Procedure Name	AMDT #	Task Report Type Selections
4/22/2021	KILN	RNAV (GPS) RWY 22R ORIG-C		MAGVAR
4/22/2021	KILN	RNAV (GPS) RWY 4L ORIG-C		MAGVAR
6/17/2021	KILN	ILS or LOC RWY 22L Amdt Orig-D (CAT II)		MAGVAR
6/17/2021	KILN	ILS or LOC RWY 22R Amdt 6A (SA CAT I) (CAT II / III)		MAGVAR
6/17/2021	KILN	ILS OR LOC RWY 4L AMDT 4E		MAGVAR
6/17/2021	KILN	ILS or LOC RWY 4R Amdt Orig-D		MAGVAR
6/17/2021	KILN	RNAV (GPS) RWY 22R ORIG-D		MAGVAR
6/17/2021	KILN	RNAV (GPS) RWY 4L Orig-D		MAGVAR

NAVAID ID / RWY	Type / Old No.	Use / New RWY/Note
HWM (CUBLA)	NDB/C	NDB/C
I-HWM	ILS	ILS
I-ILN	ILS	ILS
I-IYV	ILS	ILS
ILN (AIRBO)	NDB/M	NDB/M
RHX	ILS	ILS

IF you have any questions please notify: donald.h.lanier@faa.gov

405-954-8242

Processed Thursday, January 28, 2021