

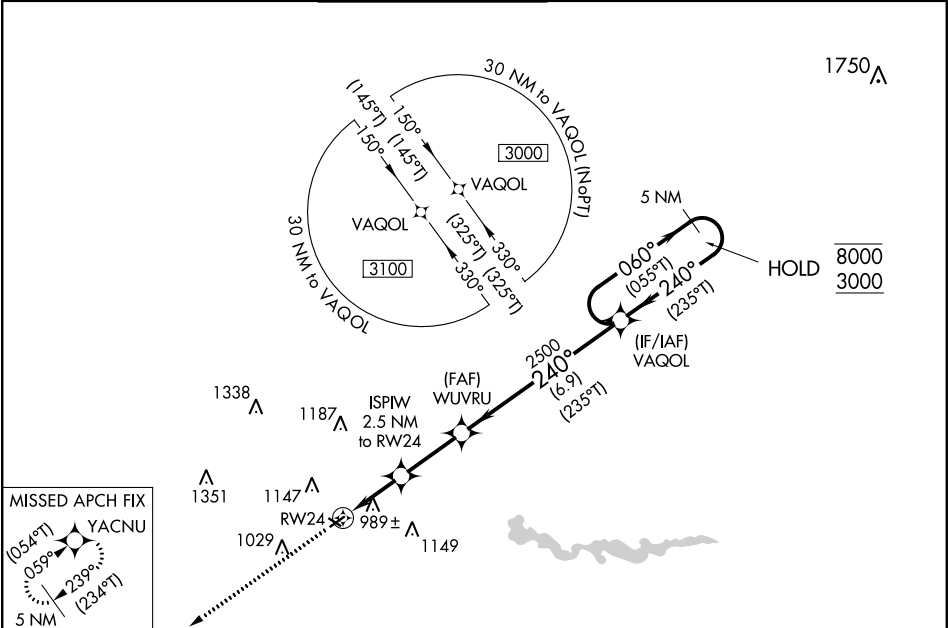
Flight Procedures Cover Page	Task Action: FLIGHT CHECK	Task Type: IAP	Estimated Chart Date: 08/11/2022	APWS Task ID: C708C97D1E97427D8C2F382FF4B97955	APWS Project ID: 8F45078B42ED4129ACA1F4B22267EC47
Procedure: RNAV (GPS) RWY 24 AMDT 2F		Enroute: NO	Specialist: Buntin, Karlie		Agreement Number:
Airport ID: KARB			Airport City: ANN ARBOR		State: MI
Facility ID:	Facility Type:	Flight Inspection Remark Type: New FC Slot			
<div>Procedure Comments:</div> <div>Cancels FDC NOTAM 1/7515.</div> <div>Procedure completed using pending airport data.</div> <div>Contact Casimir Tabaka: 405-954-7931.</div> <div><div>Digitally signed by CASIMIR L TABAKA Apr 26, 2022</div><div>QUALITY 9 CHECKED</div><div>QUALITY 13 CHECKED</div></div>					

WAAS CH 61120 W24A	APP CRS 240°	Rwy Idg TDZE Apt Elev	3505 831 839
--	------------------------	-----------------------------	---

RNAV (GPS) RWY 24

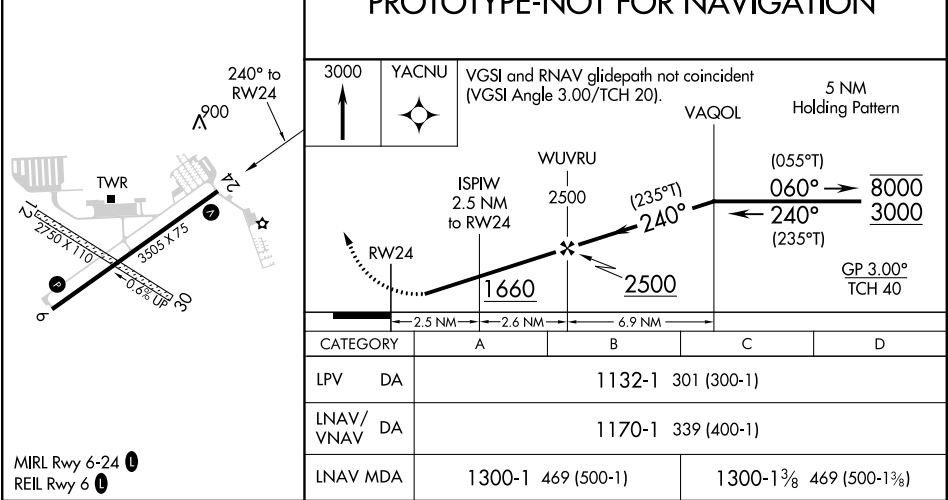
ANN ARBOR MUNI (ARB)

RNP APCH - GPS.				MISSED APPROACH: Climb to 3000 direct YACNU and hold.	
Rwy 24 helicopter visibility reduction below ¾ SM NA. For uncompensated Baro-VNAV systems, LNAV/VNAV NA below -16°C or above 38°C.					
ATIS 134.55	DETROIT APP CON 118.95 284.0	ANN ARBOR TOWER ★ 120.3 (CTAF) 0	GND CON 121.6	CLNC DEL 121.6	UNICOM 123.0



ELEV 839	TDZE 831
----------	----------

PROTOTYPE-NOT FOR NAVIGATION



MIRL Rwy 6-24 **0**
REIL Rwy 6 **0**

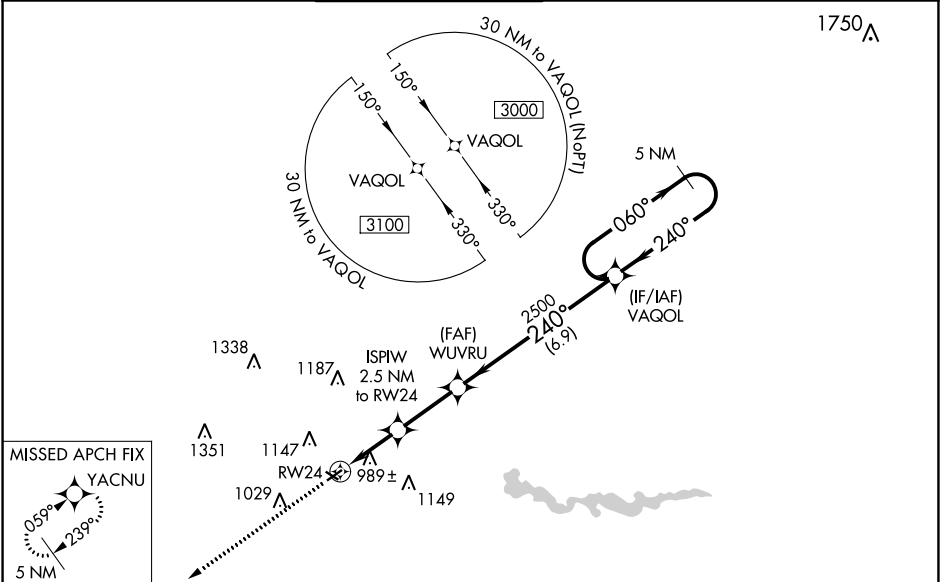
WAAS CH 61120 W24A	APP CRS 240°	Rwy Idg TDZE Apt Elev	3505 831 839
--	------------------------	-----------------------------	---

OLD

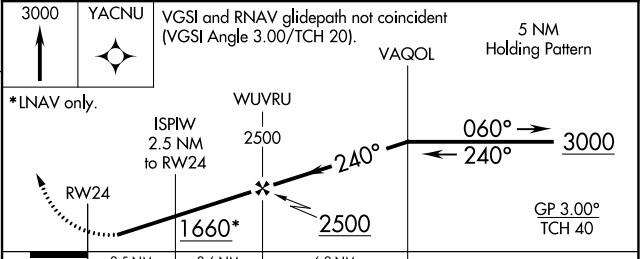
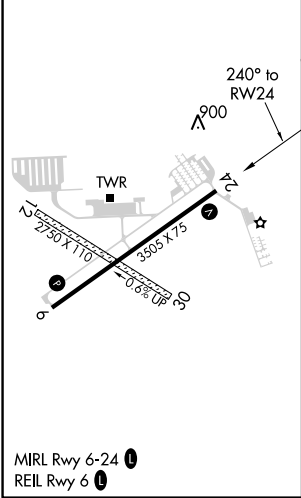
RNAV (GPS) RWY 24
ANN ARBOR MUNI (ARB)

RNP APCH. ⚠ For uncompensated Baro-VNAV systems, LNAV/VNAV NA below -16°C or above 38°C. Baro-VNAV NA when using Willow Run altimeter setting. Rwy 24 helicopter visibility reduction below ¾ SM NA. When local altimeter setting not received, use Willow Run altimeter setting and increase all DA/MDA 40 feet.	MISSED APPROACH: Climb to 3000 direct YACNU and hold.
--	---

ATIS 134.55	DETROIT APP CON 118.95 284.0	ANN ARBOR TOWER ★ 120.3 (CTAF) 0	GND CON 121.6	CLNC DEL 121.6	UNICOM 123.0
-----------------------	--	---	-------------------------	--------------------------	------------------------



ELEV 839	TDZE 831
-----------------	-----------------



CATEGORY	A	B	C	D
LPV DA	1081-1 250 (300-1)			
LNAV/VNAV DA	1155-1 324 (400-1)			
LNAV MDA	1300-1 469 (500-1)		1300-1¼ 469 (500-1¼)	

Scale - 1:100,000

LPV MA
TRANSMISSION_LINE (911)
26-128998