


Flight Procedures Cover Page	Task Action: Amendment	Task Type: IAP	Estimated Chart Date: 09/10/2020	APWS Task ID: C65F41D3F8F343C1970BC35F22366476	APWS Project ID: DC04ED134D6248B0A444F1C4CA2C81E3
Procedure: RNAV (GPS) RWY 7 AMDT 1B		Enroute: NO	Specialist: Thornton, John		Agreement Number:
Airport ID: KRRL	Airport Name: MERRILL MUNI		Airport City: MERRILL		State: WI
Facility ID:	Facility Type:	Flight Inspection Remark Type:			

Procedure Comments:
 PROCESSED IAW AIRCRAFT OPERATIONS GROUP (AJF-10) MEMO, APRIL 29, 2020, SUBJECT:
 FLIGHT INSPECTION REVIEW NOT REQUIRED


TACR - WAUSAU (AUW) CHANGE FROM VORTAC TO VOR/DME.

PENDING DATA USED FOR AUW VOR/DME.
 ACTIVE DATA USED FOR KAUW AIRPORT AND RUNWAYS.

CONTACT MANAGER MARK ADAMS, AJV-A412, 405.954.9946



Digitally signed by
MARK D ADAMS
 Jun 16, 2020



MERRILL, WISCONSIN

AL-5718 (FAA)

19031

WAAS CH 70604 W07A	APP CRS 069°	Rwy Idg TDZE Apt Elev	5100 1318 1318
--	------------------------	-----------------------------	---

OLD

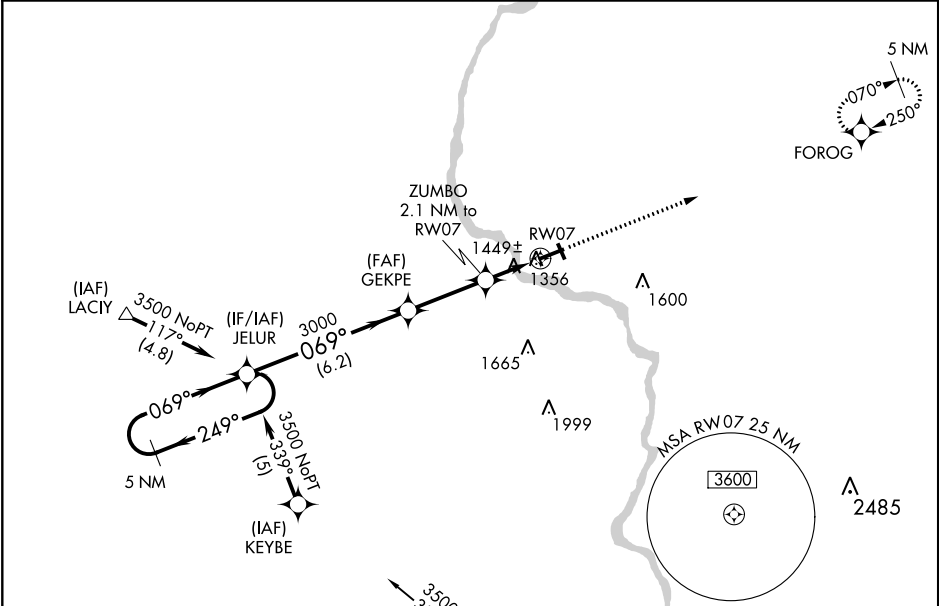
RNAV (GPS) RWY 7
MERRILL MUNI (RRL)

RNP APCH.

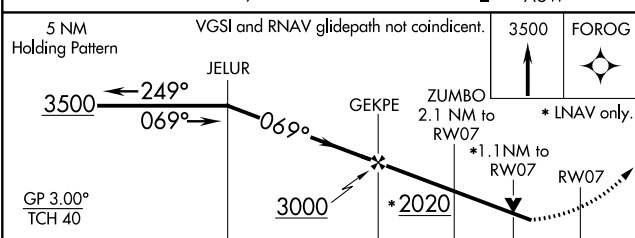
⚠ Circling Rwy 16, 34 NA at night. Baro-VNAV and VDP NA when using Wausau altimeter setting. For uncompensated Baro-VNAV systems, LNAV/VNAV NA below -17°C or above 54°C. Rwy 7 helicopter visibility reduction below ¾ SM NA. When local altimeter setting not received, use Wausau altimeter setting: increase LPV DA to 1690 feet, LNAV/VNAV DA to 1809 feet and all MDAs 60 feet.

MISSED APPROACH:
Climb to 3500 direct
FOROG and hold.

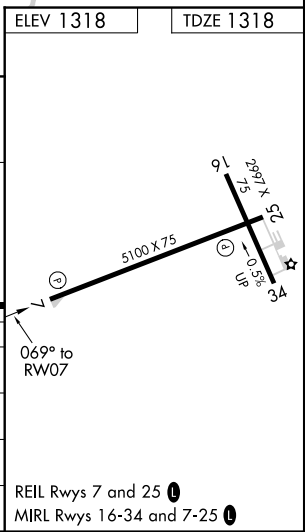
AWOS-3 119.925	MINNEAPOLIS CENTER 124.4 317.7	GCO 121.725	UNICOM 122.8 (CTAF) 0
--------------------------	--	-----------------------	---------------------------------



Procedure NA for arrivals at AUW
VORTAC on airway radials 271 CW 005.



CATEGORY	A	B	C	D
LPV DA	1635-1¼	317 (400-1¼)		NA
LNAV/VNAV DA	1754-1½	436 (500-1½)		NA
LNAV MDA	1700-1	382 (400-1)		NA
CIRCLING	1760-1 442 (500-1)	1780-1 462 (500-1)	1780-1½ 462 (500-1½)	NA



MERRILL, WISCONSIN
Amdt 1A 31JAN19

45° 12' N - 89° 43' W

RNAV (GPS) RWY 7
MERRILL MUNI (RRL)

EC-3, 30 JAN 2020 to 27 FEB 2020

EC-3, 30 JAN 2020 to 27 FEB 2020