

Flight Procedures Cover Page	Task Action: Abbreviated Amendment	Task Type: IAP	Estimated Chart Date: 12/31/2020	APWS Task ID: C649C18AFFBB4F2D9DC5BFBA4C750FEF	APWS Project ID: 8618F47BC73041308F6651BD5860164F
Procedure: RNAV (GPS) RWY 4 AMDT 1A		Enroute: NO	Specialist: Winner, Steven		Agreement Number:
Airport ID: KPHN	Airport Name: ST CLAIR COUNTY INTL		Airport City: PORT HURON		State: MI
Facility ID:	Facility Type:	Flight Inspection Remark Type:			
<p>Procedure Comments:</p> <p>ACTIVE DATA USED FOR KPHN.  CANCEL NOTAM 0/1295 WHEN PUBLISHED.  PROCESSED IAW AIRCRAFT OPERATIONS GROUP (AJF-10) MEMO, APRIL 29, 2020, SUBJECT: FLIGHT INSPECTION REVIEW NOT REQUIRED.  CONTACT ALLAN WILL 405-954-6103 .</p>					

QUALITY  
15  
CHECKED

QUALITY  
8  
CHECKED

OLD

PORT HURON, MICHIGAN

AL-5445 (FAA)

20142

WAAS CH <b>53523</b> <b>W04A</b>	APP CRS <b>043°</b>	Rwy Idg TDZE Apt Elev	<b>5104</b> <b>647</b> <b>650</b>
--	------------------------	-----------------------------	---

## RNAV (GPS) RWY 4

ST CLAIR COUNTY INTL (PHN)

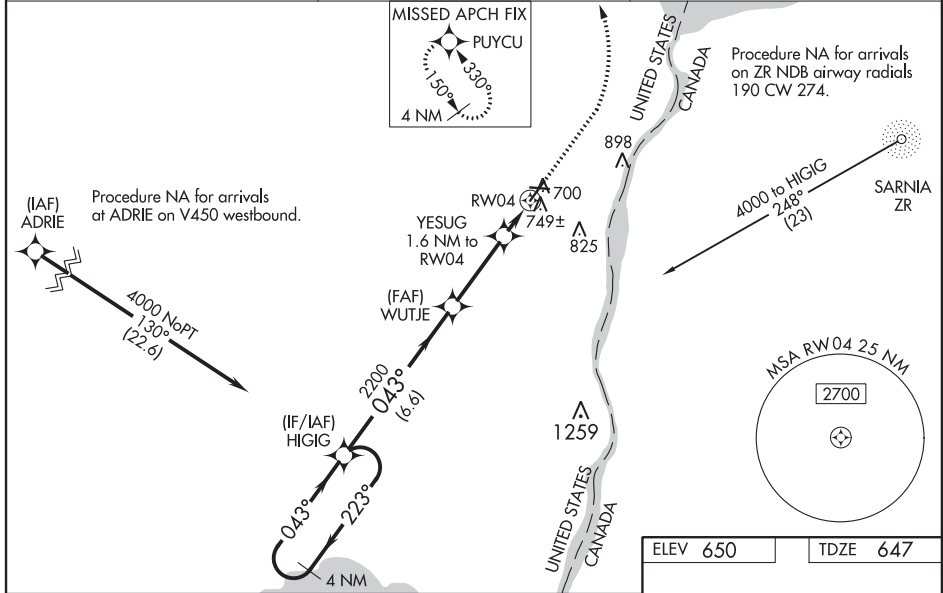
**⚠** DME/DME RNP-0.3 NA. For uncompensated Baro-VNAV systems, LNAV/VNAV NA below -16°C (4°F) or above 54°C (130°F). Baro-VNAV and VDP NA when using Troy altimeter setting. When local altimeter setting not received, use Troy altimeter setting and increase all DA 95 feet; increase all MDA 100 feet and increase LNAV/VNAV all Cats, LNAV Cat C and D and Circling Cat C and D visibility ¼ mile. For inoperative MALSR, increase LNAV/VNAV all Cats visibility to ¾ mile. For inoperative MALSR when using Troy altimeter setting, increase LNAV/VNAV all Cats visibility to 1 ½ mile. Night Landing: Rwy 10, 22, 28 NA.



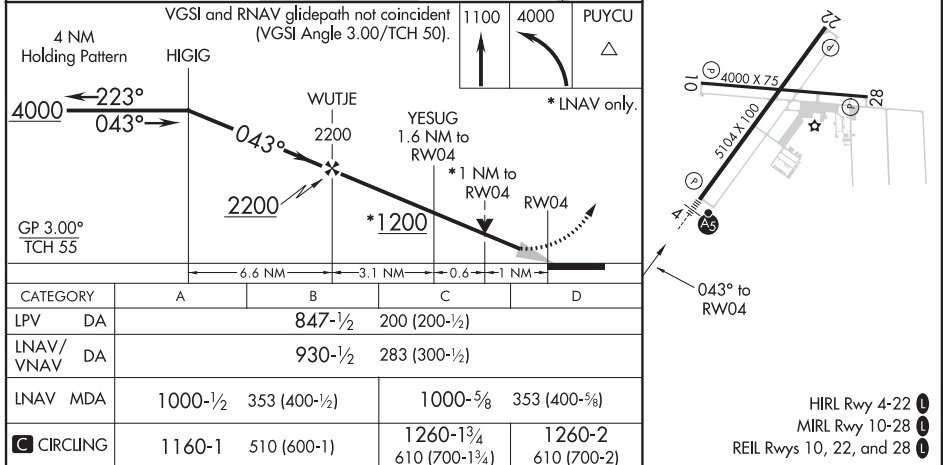
**MISSED APPROACH:**  
Climb to 1100 then climbing left turn to 4000 direct PUYCU and hold, continue climb-in-hold to 4000.

AWOS-3 <b>118.375</b>	SELFDRIDGE APP CON ★ <b>119.6 391.9</b>	UNICOM <b>123.05 (CTAF) 0</b>
--------------------------	--	----------------------------------

EC-1, 16 JUL 2020 to 13 AUG 2020



EC-1, 16 JUL 2020 to 13 AUG 2020



PORT HURON, MICHIGAN  
Amdt 1 24JUL14

42°55'N-82°32'W

ST CLAIR COUNTY INTL (PHN)  
**RNAV (GPS) RWY 4**

HIRL Rwy 4-22 0  
MIRL Rwy 10-28 0  
REIL Rws 10, 22, and 28 0