

Flight Procedures Cover Page	Task Action: P-NOTAM	Task Type: IAP	Estimated Chart Date: 10/05/2023	APWS Task ID: C4FA98902F8E4B05B301D9C175A7B023	APWS Project ID: A02E68FFBDAA4547AC4F807C7A6CF100
Procedure: RNAV (GPS) Y RWY 22 AMDT 2G		Enroute: NO	Specialist: Dumar, Ralph		Agreement Number:
Airport ID: KLGA			Airport City: NEW YORK		State: NY
Facility ID:	Facility Type:	Flight Inspection Remark Type:			
<div>Procedure Comments: PROCESSED IAW TECHNICAL SUPPORT GROUP (AJF-17) MEMO DATED 07/07/2021 GUIDANCE FOR PROCEDURAL CHANGES REQUIRING FLIGHT INSPECTION/VALIDATION  ACTIVE AIRPORT DATA USED.  REMARKS: CIRCLING RESTRICTION NOTE ADDED. CONTACT RAKE MCGRAW (405) 954-8711.</div> <div><div>05/12/2023</div><div>QUALITY 14 CHECKED</div><div>QUALITY 41 CHECKED</div></div>					

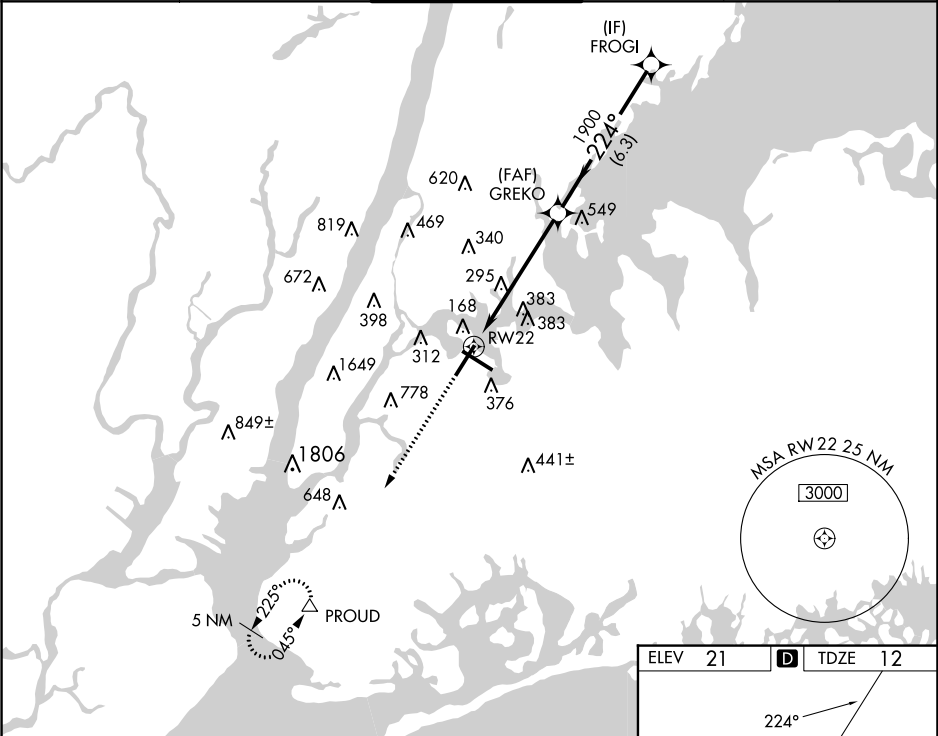
WAAS CH <b>70318</b> <b>W22A</b>	APP CRS <b>224°</b>	Rwy Idg TDZE <b>12</b> Apt Elev <b>21</b>
--	------------------------	---



RNAV (GPS) Y RWY 22

LAGUARDIA (LGA)

RNP APCH. <div><div>▼</div><div>▲</div></div> For uncompensated Baro-VNAV systems, LNAV/VNAV NA below -11°C (13°F) or above 54°C (130°F).				ALSF-1 <div><div>▲</div><div>1</div></div>	MISSED APPROACH: Climb to 3000 direct PROUD and hold, continue climb-in-hold to 3000.		
D-ATIS ARR D-ATIS DEP	<b>125.95</b> <b>127.05</b>	NEW YORK APP CON <b>120.8 263.0</b>	LAGUARDIA TOWER <b>118.7 263.0</b>	GND CON <b>121.7 263.0</b>	CLNC DEL <b>135.2</b>	CPDLC	



3000	PROUD	VGSI and RNAV glidepath not coincident (VGSI Angle 3.00/TCH 67).			
↑	△				
*LNAV only	*1.6 NM to RW22				
RW22		FROGI			
		GREKO 1900 224° 3000			
		1900			
		GP 3.00° TCH 52			
		1.6 NM 4.1 NM 6.3 NM			
CATEGORY	A	B	C	D	
LPV DA	262/24		250 (300-½)		
LNAV/VNAV DA	527/60		515 (600-1¼)		
LNAV MDA	580/24 568 (600-½)		580/50 568 (600-1)		580/60 568 (600-1¼)
CIRCLING	700-1 679 (700-1)		1080-3 1059 (1100-3)		1260-3 1239 (1300-3)

