

Flight Procedures Cover Page	Task Action: FLIGHT CHECK	Task Type: IAP	Estimated Chart Date: 12/26/2024	APWS Task ID: C484A8304BE94CA19D952FBD1DB964E6	APWS Project ID: 017348346A0042C39B47CB39C88E1010
Procedure: RNAV (GPS) RWY 18 AMDT 2C		Enroute: NO	Specialist: Hill, Phillip		Agreement Number:
Airport ID: KOCF			Airport City: OCALA		State: FL
Facility ID:	Facility Type:	Flight Inspection Remark Type: New FC Slot			
<div>Procedure Comments:</div> <div>ACTIVE DATA USED FOR KOCF AIRPORT AND RUNWAY.</div> <div>NEW LNAV/VNAV AND LNAV FINAL CONTROLLING OBSTACLE: OCF 12-142864, TOWER, 237 MSL, 5290 FT NW OF APCH END RWY 18 (12-142864 PERMANENT).</div> <div>CONTACT ROBERT HAMILTON: AJV-433 405-954-4608.</div> <div><div>QUALITY 41 CHECKED</div><div>QUALITY 30 CHECKED</div></div>					

<b>FIPC BASIC FORM</b>							
<b>PROCEDURE:</b> RNAV (GPS) RWY 18 AMDT 2C			<b>AIRPORT NAME:</b> OCALA INTL-JIM TAYLOR FLD		<b>AIRPORT ID:</b> KOCF	<b>SPECIAL CONTROL NO:</b> AG-09-268-24	
<b>FAC ID:</b> KOCF18.02		<b>CITY:</b> Ocala			<b>ST:</b> FL	<b>ORIG CHART DATE:</b> 12/26/2024	
<b>DFL TYPE:</b> PROC/S	<b>THIRD PARTY:</b> <input type="checkbox"/> YES	<b>EST. TIME ON SITE:</b> 0.4	<b>REIMB. NUMBER:</b>		<b>PTS TASK ID:</b> C484A8304BE94CA19D952FBD1DB964E6		
<b>PREFLIGHT NOTES</b>							
<b>REVIEWER:</b>					<b>DATE:</b>		
<b>COMMENTS:</b>					<b>CHECK ONE:</b>		
					<input type="checkbox"/> FLT CK REQ <input type="checkbox"/> NFCR <input type="checkbox"/> REJECT		
							<b>YES</b>
					<b>CPV COMPLETE?</b>		<b>X</b>
<b>PROCEDURE RESULTS</b>							
<b>INSPECTION DATE:</b> 02/13/2025		<b>CREW #:</b> VN546	<b>N #:</b> N81	<b>INSTRUMENT PROCEDURE STATUS:</b> <input checked="" type="checkbox"/> SAT <input type="checkbox"/> SAT W/CHANGES <input type="checkbox"/> UNSAT		<b>ARINC CODING:</b> <input checked="" type="checkbox"/> SAT <input type="checkbox"/> SAT/GOLD <input type="checkbox"/> UNSAT	
<b>FLIGHT INSPECTOR SIGNATURE:</b> jon d holland @ 02/14/2025 04:54			<b>PRINTED NAME:</b> HOLLAND, JON DAVID				<b>NOTAM INITIATED?</b> <input type="checkbox"/> YES <input checked="" type="checkbox"/> NO
<b>FLIGHT INSPECTOR REMARKS:</b>							
<b>IN-FLIGHT OBSTACLE REPORT</b>							
<b>OBSTRUCTION ID #:</b>	<b>COORDINATES OR LOCATION:</b>		<b>GNSS ALTITUDE (MSL):</b>		<b>BAROMETRIC ALTITUDE (MSL):</b>		<b>HEIGHT ABOVE GROUND LEVEL:</b>

WAAS CH <b>90319</b> <b>W18A</b>	APP CRS <b>184°</b>	Rwy Idg TDZE Apt Elev <b>6557</b> <b>80</b> <b>90</b>
--	------------------------	--

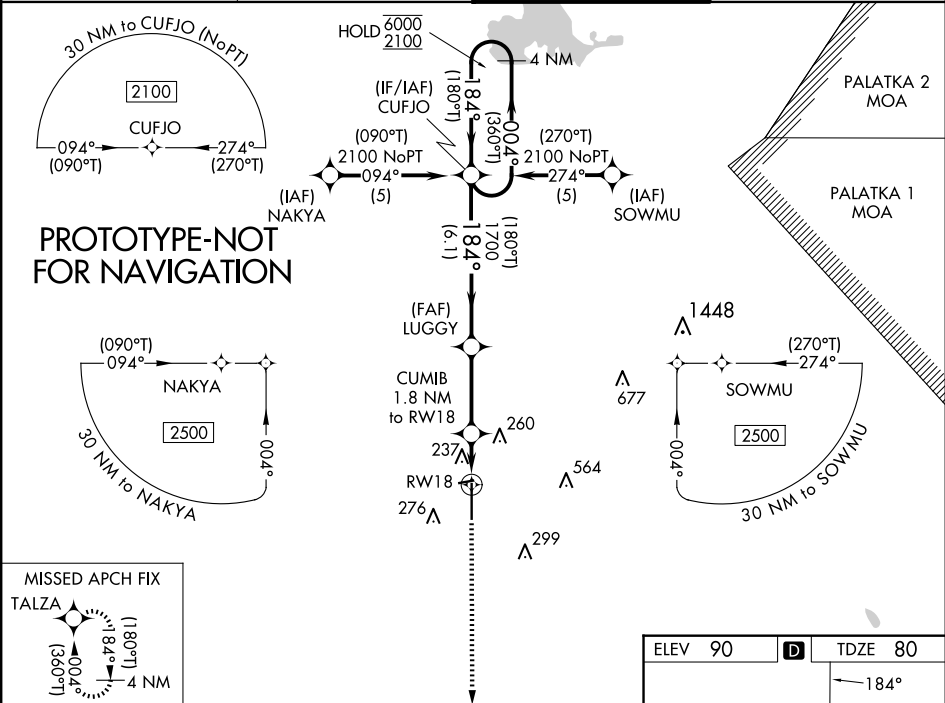
RNAV (GPS) RWY 18  
OCALA INTL-JIM TAYLOR FLD (OCF)

RNP APCH-GPS.

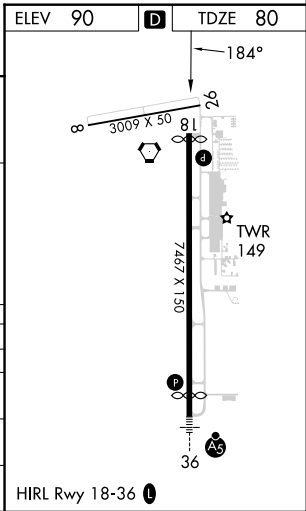
For uncompensated Baro-VNAV systems, LNAV/VNAV NA below -5°C or above 54°C.  
When local altimeter setting not received, use GNV altimeter setting and increase LPV DA to 361 feet and all visibilities ½ SM; increase LNAV/VNAV DA to 595 feet and all visibilities ½ SM, increase all MDA's 100 feet and LNAV visibility Cats C and D ¼ SM and Circling visibility Cats C and D ½ SM. Baro-VNAV and VDP NA when using GNV altimeter setting.

MISSED APPROACH:  
Climb to 2000 direct  
TALZA and hold.

ATIS <b>128.125</b>	JACKSONVILLE APP CON <b>118.6 251.15</b>	OCALA TOWER ★ <b>119.25 (CTAF)</b>	GND CON <b>121.4</b>
------------------------	---	---------------------------------------	-------------------------



4 NM Holding Pattern		VGSI and RNAV glidepath not coincident (VGSI Angle 3.00/TCH 45).		2000	TALZA
CUFJO		LUGGY	CUMIB 1.8 NM to RW18	1.3 NM to RW18	RW18
6000 2100		1700	700	0.5	1.3
GP 3.00° TCH 52		6.1 NM	3.1 NM	0.5	1.3
CATEGORY	A	B	C	D	
LPV DA	280-¾		200 (200-¾)		
LNAV/VNAV DA	514-1¼		434 (500-1¼)		
LNAV MDA	540-1	460 (500-1)	540-1⅓	460 (500-1⅓)	
CIRCLING	600-1	510 (600-1)	760-1¾ 670 (700-1¾)	920-2¾ 830 (900-2¾)	



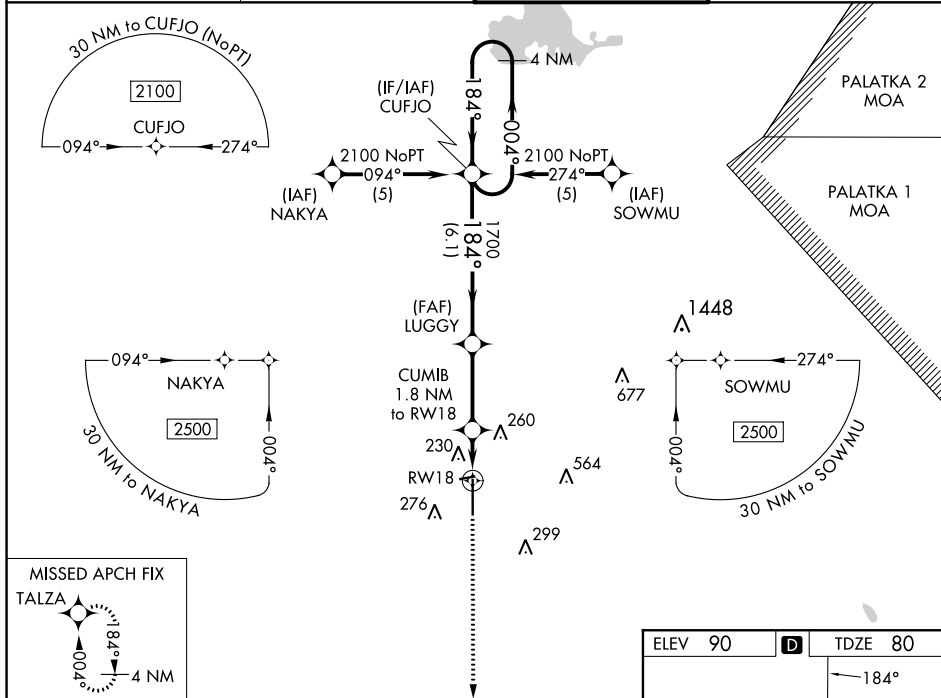
WAAS CH <b>90319</b> <b>W18A</b>	APP CRS <b>184°</b>	Rwy Idg TDZE Apt Elev <b>6557</b> <b>80</b> <b>90</b>
--	------------------------	--

RNAV (GPS) RWY 18  
OCALA INTL-JIM TAYLOR FLD (OCF)

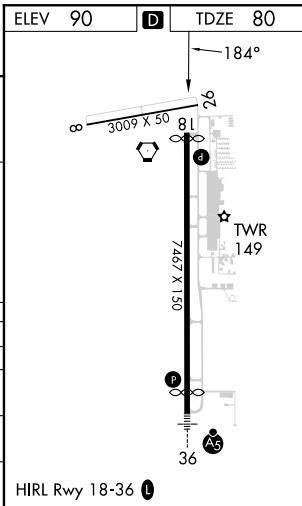
**⚠** For uncompensated Baro-VNAV systems, LNAV/VNAV NA below -15°C (5°F) or above 48°C (118°F). DME/DME RNP-0.3 NA. When local altimeter setting not received, use Gainesville altimeter setting and increase LPV DA to 361 feet, increase LNAV/VNAV DA to 595 feet and all MDA 100 feet; increase LPV and LNAV/VNAV all Cats and LNAV Cats C/D visibility ¼ SM; increase Circling Cat C visibility ½ SM, Cat D ¼ SM. Baro-VNAV and VDP NA when using Gainesville altimeter setting.

MISSED APPROACH:  
Climb to 2000 direct  
TALZA and hold.

ATIS <b>128.125</b>	JACKSONVILLE APP CON <b>118.6 251.15</b>	OCALA TOWER ★ <b>119.25 (CTAF) 0</b>	GND CON <b>121.4</b>
------------------------	---	---	-------------------------



4 NM Holding Pattern		VGSI and RNAV glidepath not coincident (VGSI Angle 3.00/TCH 45).		2000	TALZA
2100		CUFJO	LUGGY	CUMIB 1.8 NM to RW18	*LNAV only.
GP 3.00° TCH 52		1700	*700	*1.1 NM to RW18	
6.1 NM		3.1 NM	0.7	1.1	
CATEGORY	A	B	C	D	
LPV DA	280-¾		200 (200-¾)		
LNAV/VNAV DA	514-1½		434 (500-1½)		
LNAV MDA	480-1		400 (400-1)		480-1¼ 400 (400-1¼)
CIRCLING	600-1		510 (600-1)		760-1¾ 670 (700-1¾)





AIRPORT ID: KOCF  
AIRPORT NAME: OCALA INTL-JIM  
TAYLOR FLD  
CITY/STATE: OCALA, FLORIDA  
PROC ID: RNAV (GPS) RWY 18  
AMDT: 2C  
SCALE: 100,000  
LNAV/VNAV

LUGGY

CUMIB

LNAV/VNAV LUGGY to KOCF:RW18:AER  
CIRCLING CAT A  
TOWER (237) 12-142864

KOCF  
RW18  
KOCF

Missed Level Surface  
AAO (351)

