

Flight Procedures Cover Page	Task Action: FLIGHT CHECK	Task Type: Graphical DP	Estimated Chart Date: 04/20/2023	APWS Task ID: C403659615E0478C9ABD49F272131DA5	APWS Project ID: 6FD23BC4C4E54B57A9460A75860A8D4C
Procedure: BEND TWO (OBSTACLE) DEPARTURE		Enroute: YES	Specialist: Keefer, John		Agreement Number:
Airport ID: KBDN			Airport City: BEND		State: OR
Facility ID:	Facility Type:	Flight Inspection Remark Type: New FC Slot			
<div>Procedure Comments: Amend the ODP departure paths so they do not conflict with inbound aircraft using the DSD VOR. Airport MagVar update. Runway numbers will update in 2025.</div> <div>AIRPORT MAGVAR UPDATE: KBDN: OLD 19E - NEW 14E.</div> <div>CONTACT CASIMIR TABAKA 405-954-7931.</div> <div>QUALITY 15 CHECKED</div> <div>QUALITY 12 CHECKED</div>					

FIPC BASIC FORM						
PROCEDURE: BEND TWO (OBSTACLE) DEPARTURE			AIRPORT NAME: BEND MUNI		AIRPORT ID: KBDN	SPECIAL CONTROL NO: SP-12-121-22
FAC ID: BEND2		CITY: BEND			ST: OR	ORIG CHART DATE: 04/20/2023
DFL TYPE: PROC/T	THIRD PARTY: <input type="checkbox"/> YES	EST. TIME ON SITE: 0.4	REIMB. NUMBER:	PTS TASK ID: C403659615E0478C9ABD49F272131DA5		
PREFLIGHT NOTES						
REVIEWER:					DATE:	
COMMENTS:					CHECK ONE: <input checked="" type="checkbox"/> FLT CK REQ <input type="checkbox"/> NFCR <input type="checkbox"/> REJECT	
						YES NO
					CPV COMPLETE?	X
PROCEDURE RESULTS						
INSPECTION DATE: 01/13/2023	CREW #: VN502	N #: N79	INSTRUMENT PROCEDURE STATUS: <input checked="" type="checkbox"/> SAT <input type="checkbox"/> SAT W/CHANGES <input type="checkbox"/> UNSAT		ARINC CODING: <input checked="" type="checkbox"/> SAT <input type="checkbox"/> SAT/GOLD <input type="checkbox"/> UNSAT	
FLIGHT INSPECTOR SIGNATURE: troy e devine @ 01/13/2023 15:15			PRINTED NAME: DEVINE, TROY ELLEN			NOTAM INITIATED? <input type="checkbox"/> YES <input checked="" type="checkbox"/> NO
FLIGHT INSPECTOR REMARKS: SP-12-121-22, BEND MUNI, BEND OR, BEND TWO DEPARTURE, concurrent with ODP AMDT 5, flown SAT. DSD R-130 SAT, controlling obstacles & climb gradient verified.						
IN-FLIGHT OBSTACLE REPORT						
OBSTRUCTION ID #:	COORDINATES OR LOCATION:	GNSS ALTITUDE (MSL):	BAROMETRIC ALTITUDE (MSL):		HEIGHT ABOVE GROUND LEVEL:	

(BDN2.BDN) FIG

BEND TWO DEPARTURE (OBSTACLE)

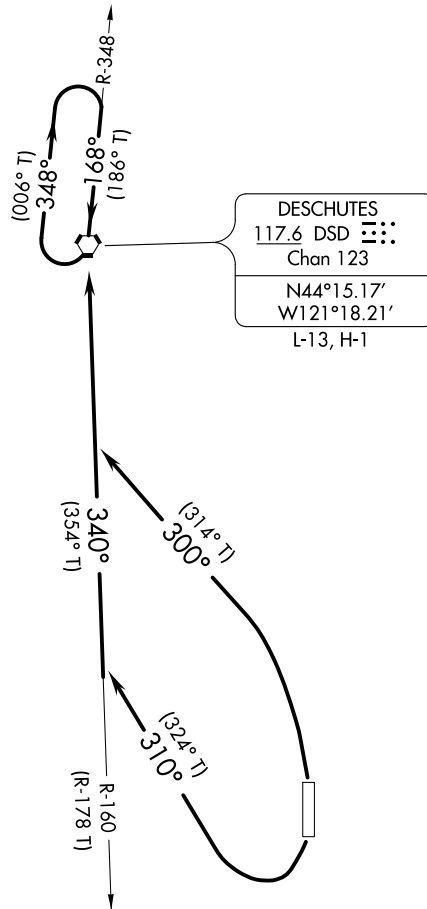
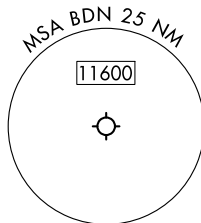
AL-5579 (FAA)

BEND MUNI (BDN)

BEND, OREGON

SEATTLE CENTER
126.15 269.475
CTAF
123.0

PROTOTYPE: NOT
FOR NAVIGATION



TAKEOFF MINIMUMS

Rwy 16: Standard.
Rwy 34: Standard with minimum climb of 260 ft per
NM to 4600 or 4600-3 for VCOA.

(NOTES ON FOLLOWING PAGE)

NOTE: Chart not to scale.

DEPARTURE ROUTE DESCRIPTION

TAKEOFF RUNWAY 16: Climbing right turn heading 310° to intercept DSD R-160 to DSD VORTAC, Thence . . .

TAKEOFF RUNWAY 34: Climbing left turn heading 300° to intercept the DSD R-160 to DSD VORTAC, Thence . . .

. . . . Climb in DSD VORTAC holding pattern to cross DSD VORTAC at or above the MEA/MCA for the route of flight.

VCOA: RUNWAY 16: Obtain ATC approval for VCOA when requesting IFR clearance. Climb in visual conditions to cross Bend Muni Airport at or above 7900 before proceeding on course.

BEND TWO DEPARTURE (OBSTACLE)

(BDN2.BDN) FIG

BEND, OREGON

BEND MUNI (BDN)

AUTOMATED AL-5579 BEND DEPARTURE

NW-1

16 DEC 2022

COMPILER: CG

REVIEWER:

DBL CHKR:

EFF: FIG

ACTIVE DEPARTURE

(BDN1.BDN) 19171

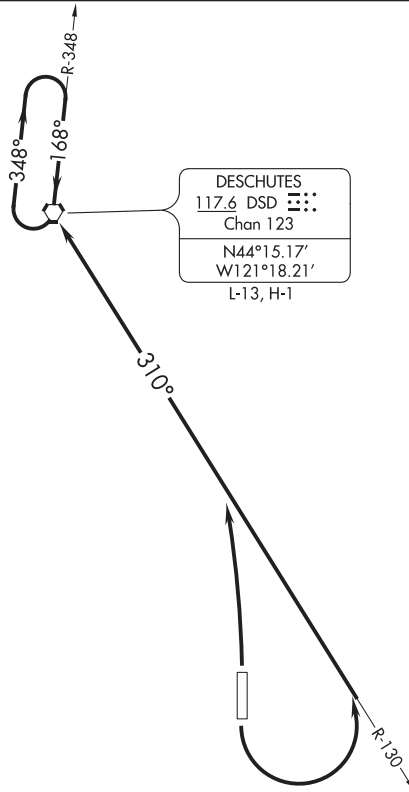
BEND ONE DEPARTURE (OBSTACLE)

AL-5579 (FAA)

BEND MUNI (BDN)

BEND, OREGON

SEATTLE CENTER
126.15 269.475
CTAF
123.0



TAKEOFF MINIMUMS

Rwys 16, 34: Standard.

TAKEOFF OBSTACLE NOTES

Rwy 16: Trees beginning 75' from DER, 412' left of centerline, up to 43' AGL/3572' MSL.
Trees beginning 432' from DER, 5' right of centerline, up to 37' AGL/3541' MSL.
Terrain beginning 27' from DER, 197' right of centerline, up to 3469' MSL.
Road 1' from DER, 414' left of centerline, 17' AGL/3466' MSL.

Rwy 34: Trees beginning 306' from DER, 178' left of centerline, up to 25' AGL/3436' MSL.
Road beginning 460' from DER, 414' left of centerline, up to 17' AGL/3425' MSL.
Bush 94' from DER, 443' left of centerline, 4' AGL/3407' MSL.
Terrain beginning 1' from DER, 147' left of centerline, up to 3408' MSL.
Trees beginning 52' from DER, 252' right of centerline, up to 39' AGL/3429' MSL.

NOTE: Chart not to scale.

DEPARTURE ROUTE DESCRIPTION

TAKEOFF RUNWAY 16: Climbing left turn to intercept DSD R-130 to DSD VORTAC,
Thence

TAKEOFF RUNWAY 34: Climbing left turn to intercept the DSD R-130 to DSD VORTAC,
Thence

. . . . Climb in DSD VORTAC holding pattern to cross DSD VORTAC at or above the
MEA/MCA for the route of flight.

BEND ONE DEPARTURE (OBSTACLE)

(BDN1.BDN) 02JUL09

BEND, OREGON

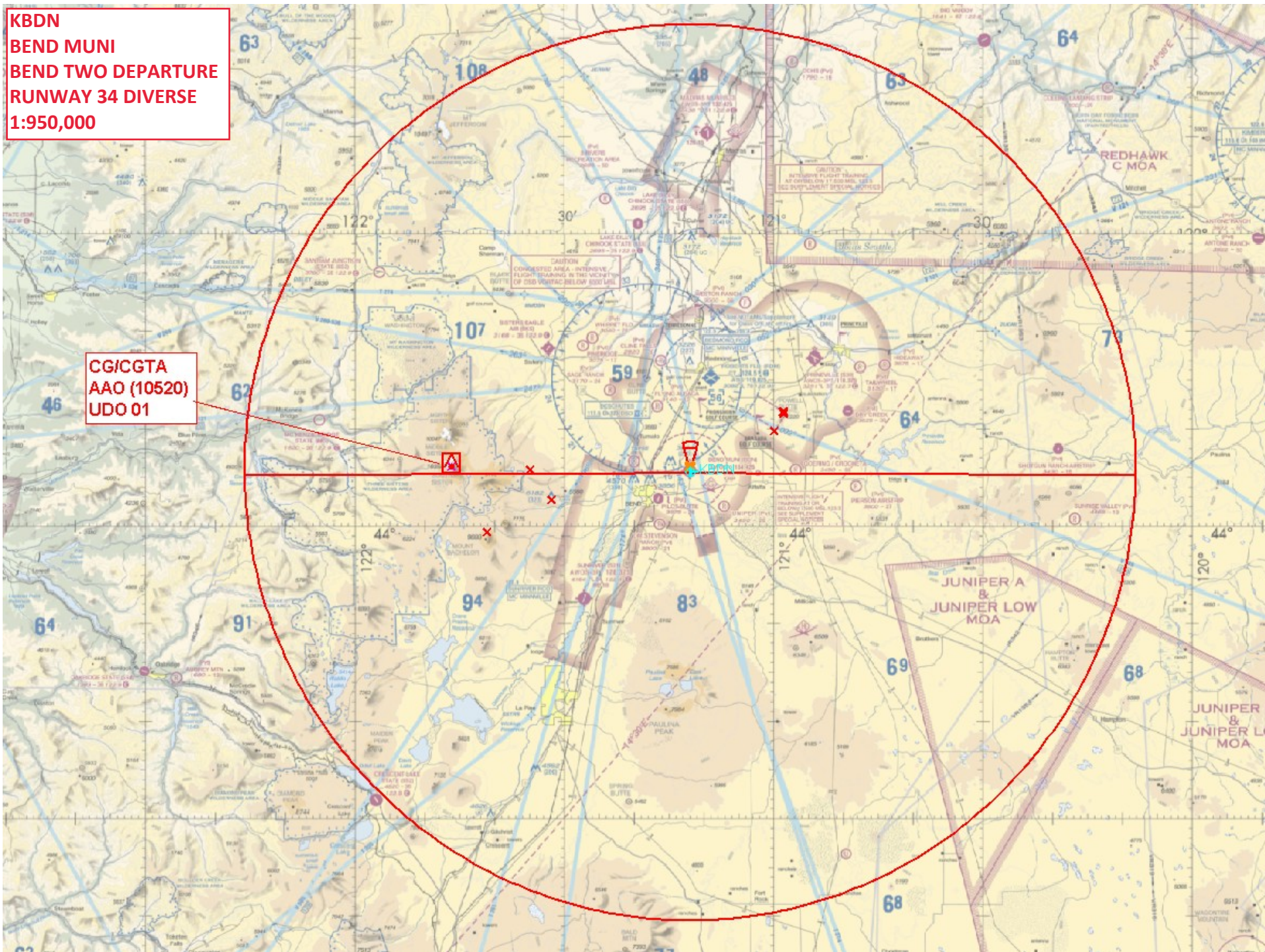
BEND MUNI (BDN)

NW-1, 03 NOV 2022 to 01 DEC 2022

NW-1, 03 NOV 2022 to 01 DEC 2022

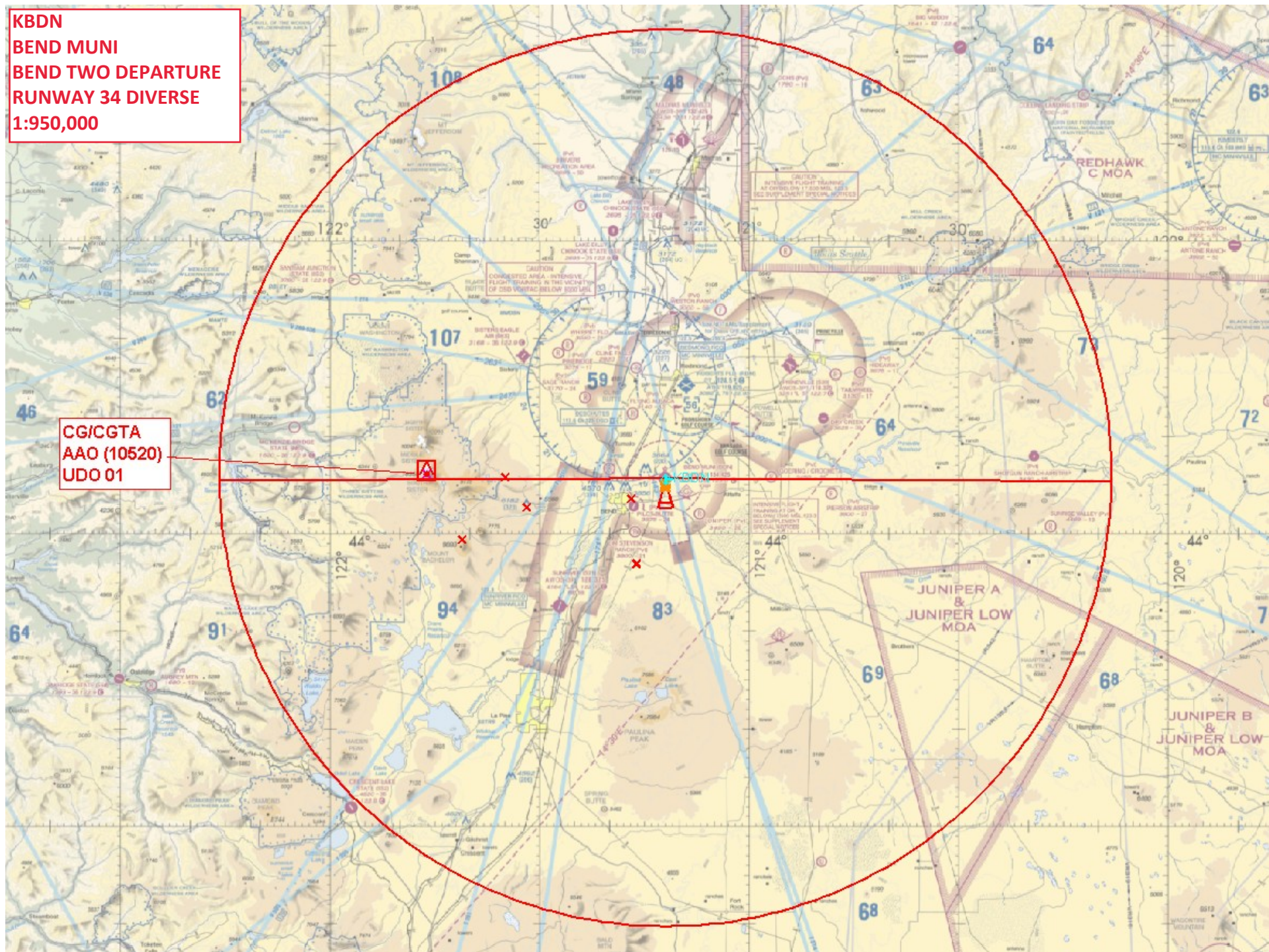
**KBDN
BEND MUNI
BEND TWO DEPARTURE
RUNWAY 34 DIVERSE
1:950,000**

CG/CGTA
AAO (10520)
UDO 01



KBDN
BEND MUNI
BEND TWO DEPARTURE
RUNWAY 34 DIVERSE
1:950,000

CG/CGTA
AAO (10520)
UDO 01



**KBDN
BEND MUNI
BEND TWO DEPARTURE
RUNWAY 34
1:500,000**

HOLDING DSD
NAVAID (4126)
41-022922

KBDN
BEND MUNI
BEND TWO DEPARTURE
RUNWAY 16
1:500,000

CAUTION
 CONGESTED AREA - INTENSIVE
 FLIGHT TRAINING IN THE VICINITY
 OF DSD VORTAC- BELOW 8000 MSL

CAUTION
 INTENSIVE FLIGHT TRAINING
 AT OR BELOW 17,500 MSL 123.5
 SEE SUPPLEMENT SPECIAL NOTICES

**HOLDING DSD
 NAVAID (4126)
 41-022922**

**RW16 CG/CGTA
 AAO (4340)
 UDO 54**

**INTENSIVE FLIGHT
 TRAINING AT OR
 BELOW 17,500 MSL 123.3
 SEE SUPPLEMENT
 SPECIAL NOTICES**

KBDN
BEND MUNI
BEND TWO DEPARTURE
RUNWAY 16
1:500,000

CAUTION
 CONGESTED AREA - INTENSIVE FLIGHT TRAINING IN THE VICINITY OF DSD VORTAC- BELOW 8000 MSL

HOLDING DSD NAVAID (4126) 41-022922

RW16 CG/CGTA AAO (4340) UDO 54

KBDN
BEND MUNI
BEND TWO DEPARTURE
RUNWAY 16
1:500,000

CAUTION
 CONGESTED AREA - INTENSIVE
 FLIGHT TRAINING IN THE VICINITY
 OF DSD VORTAC- BELOW 8000 MSL

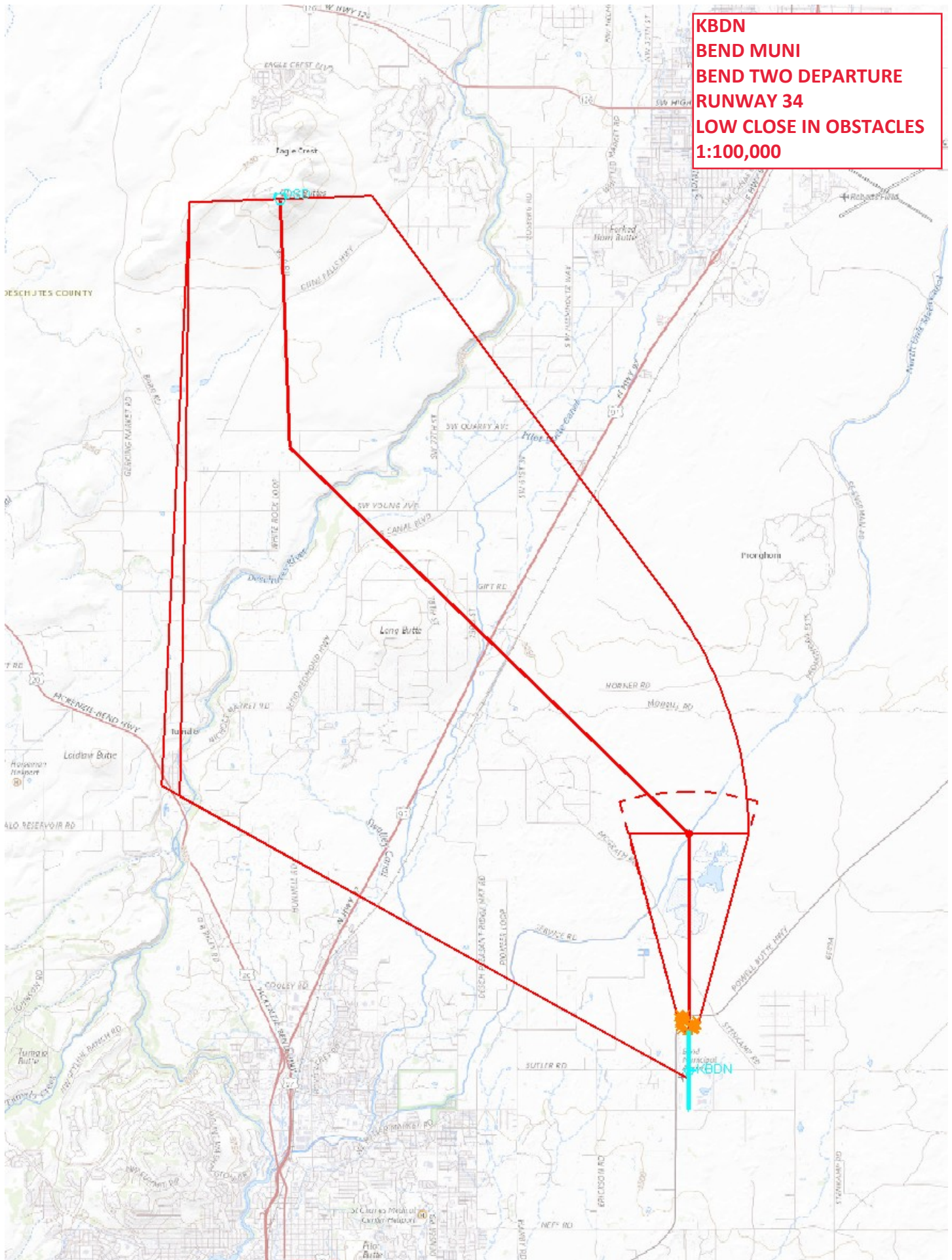
CAUTION
 INTENSIVE FLIGHT TRAINING
 AT OR BELOW 17,500 MSL 123.5
 SEE SUPPLEMENT SPECIAL NOTICES

**HOLDING DSD
 NAVAID (4126)
 41-022922**

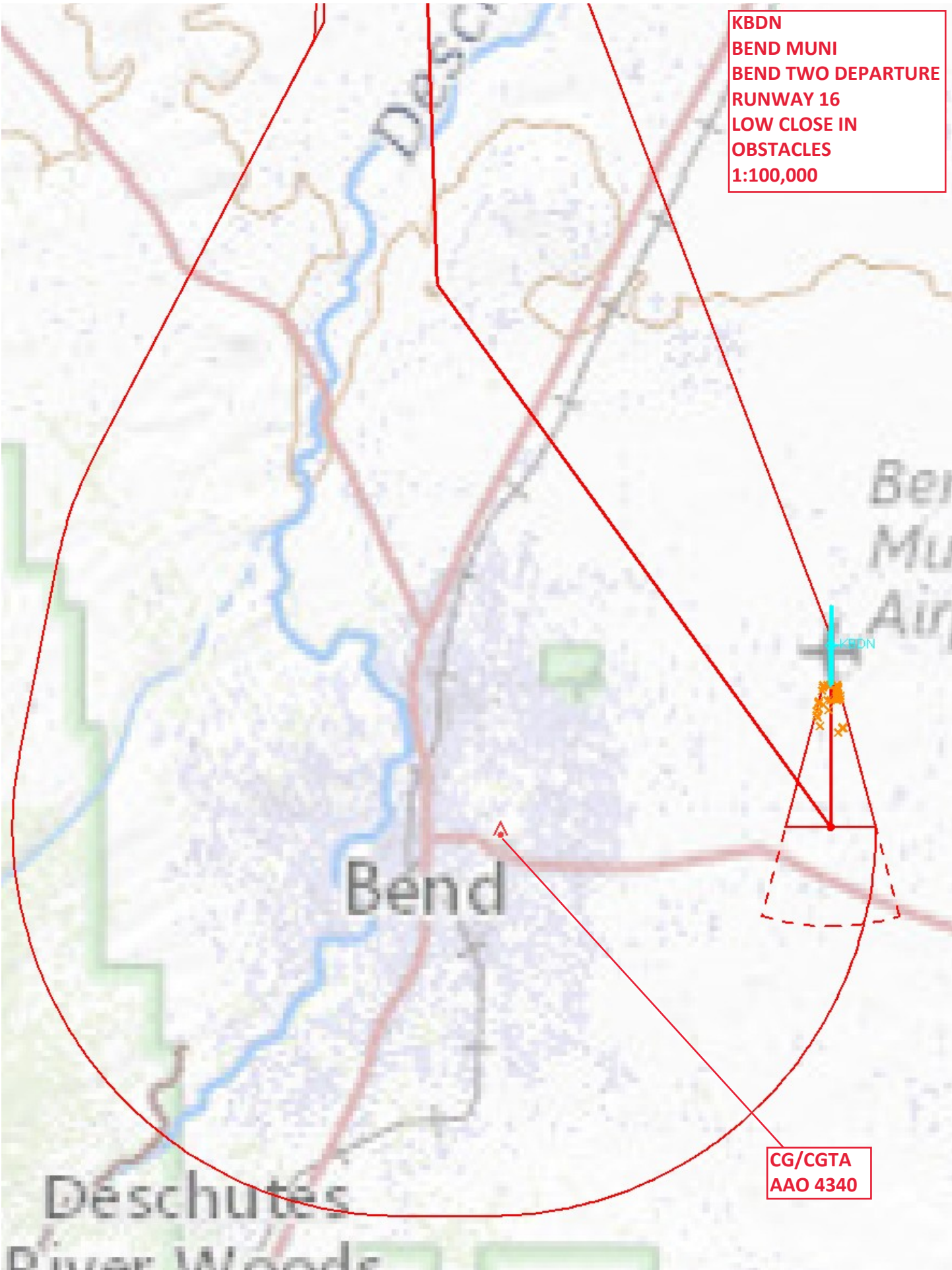
**RW16 CG/CGTA
 AAO (4340)
 UDO 54**

**INTENSIVE FLIGHT TRAINING AT OR
 BELOW 17,500 MSL 123.3
 SEE SUPPLEMENT SPECIAL NOTICES**

KBDN
BEND MUNI
BEND TWO DEPARTURE
RUNWAY 34
LOW CLOSE IN OBSTACLES
1:100,000



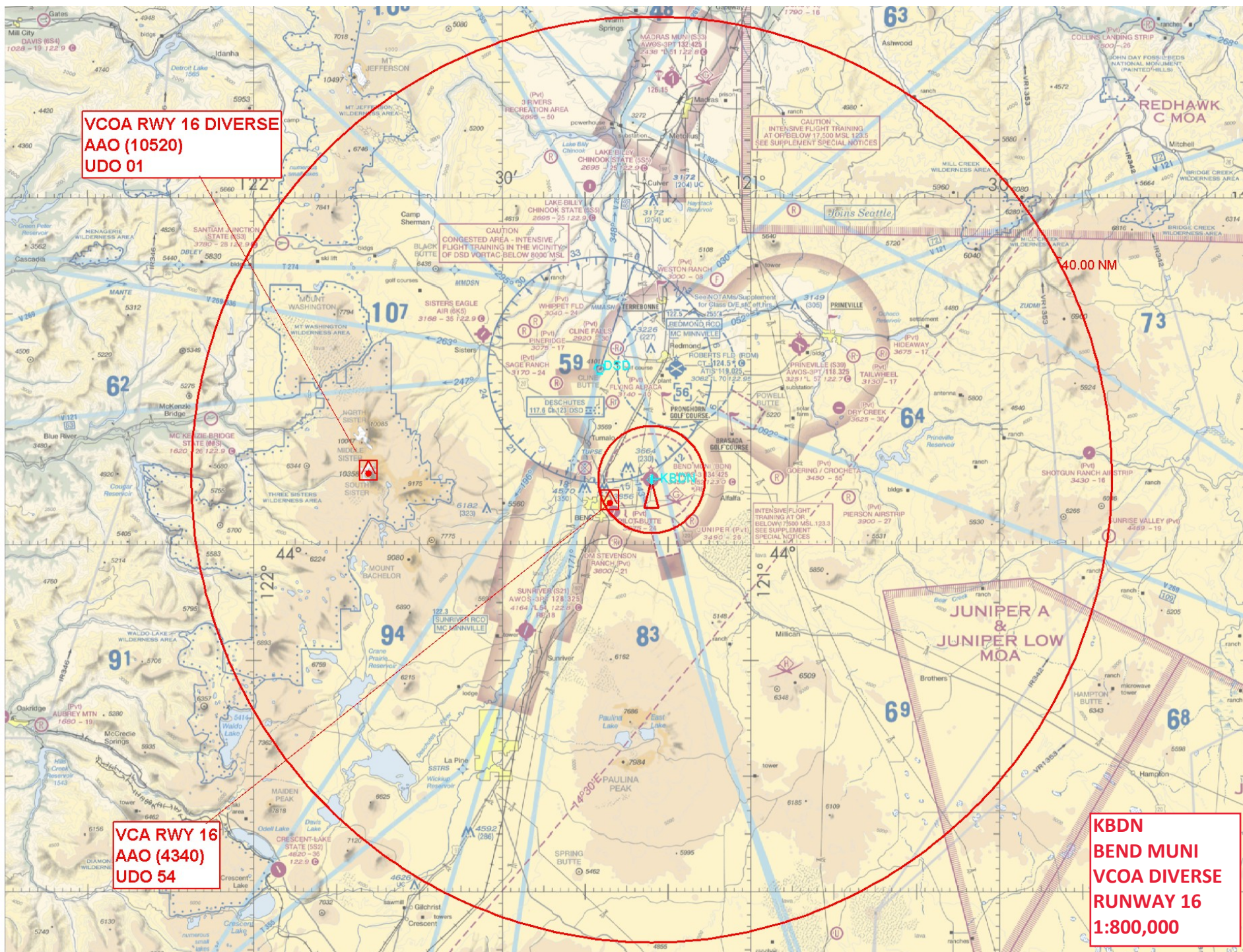
KBDN
BEND MUNI
BEND TWO DEPARTURE
RUNWAY 16
LOW CLOSE IN
OBSTACLES
1:100,000



CG/CGTA
AAO 4340

**KBDN
BEND MUNI
VCOA (VCA)
RUNWAY 16
1:100,000**

VCA RWY 16
AAO (4340)
UDO 54



VCOA RWY 16 DIVERSE
AAO (10520)
UDO 01

CAUTION
CONGESTED AREA - INTENSIVE
FLIGHT TRAINING IN THE VICINITY
OF DSD VORTAC BELOW 8000 MSL

CAUTION
INTENSIVE FLIGHT TRAINING
AT OR BELOW 17,500 MSL 123.5
SEE SUPPLEMENTAL SPECIAL NOTICES

40.00 NM

VCA RWY 16
AAO (4340)
UDO 54

KBDN
BEND MUNI
VCOA DIVERSE
RUNWAY 16
1:800,000

