

Flight Procedures Cover Page	Task Action: P-NOTAM	Task Type: IAP	Estimated Chart Date: 12/02/2021	APWS Task ID: C3FDD8C465514F55962A033977C77B9D	APWS Project ID: CE8D86AE858147B7A6CDF78A3F185F46
Procedure: VOR RWY 14 AMDT 4D		Enroute: NO	Specialist: Miller, Ralph		Agreement Number:
Airport ID: KGLS			Airport City: GALVESTON		State: TX
Facility ID: VUH	Facility Type: VOR_DME	Flight Inspection Remark Type:			
<p>Procedure Comments: P-NOTAM.</p> <p>ORDER 8260.3, CHAPTER 2, NEW CIRCLING CRITERIA APPLIED</p> <p>ACTIVE DATA USED.</p> <p>CONTACT JASON KRETSCHMER, AJV-A421, 405-954-5077.</p> <div style="display: flex; justify-content: space-between; align-items: flex-end; margin-top: 20px;"> <div style="text-align: center;"> <p><i>Digitally signed by</i> JASON KRETSCHMER Oct 15, 2021</p> </div> <div style="text-align: center;"> <p><i>Digitally signed by</i> MARY MCDONALD Oct 01, 2021</p> </div> </div>					

QUALITY
47
CHECKED

QUALITY
12
CHECKED

GALVESTON, TEXAS

AL-164 (FAA)

20142

VOR/DME VUH 113.0 Chan 77	APP CRS 143°	Rwy Idg TDZE Apt Elev 6000 5 6
---	------------------------	--

OLD

VOR RWY 14
SCHOLES INTL AT GALVESTON (GLS)

DME and RADAR required.



NA

Circling NA east of Rwy 18 and northeast of Rwy 32.

MALSR



MISSED APPROACH: Climb to 1200 then climbing right turn to 3000 on heading 284° and VUH VOR/DME R-243 to DELVE/22.1 DME and hold.

ASOS
119.275

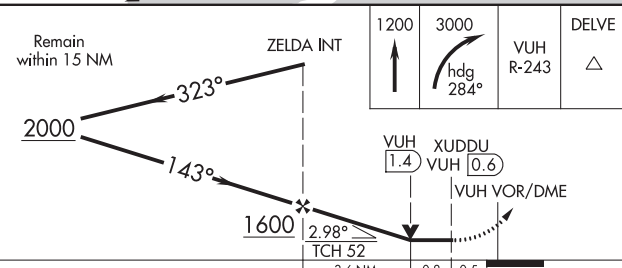
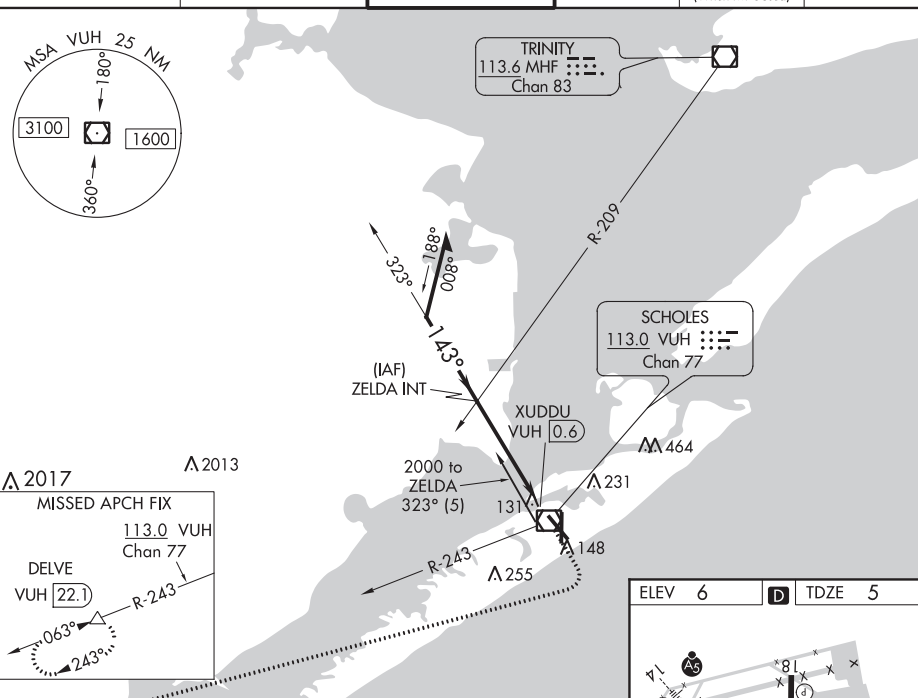
HOUSTON APP CON
134.45 284.0

GALVESTON TOWER ★
120.575 (CTAF) **0**

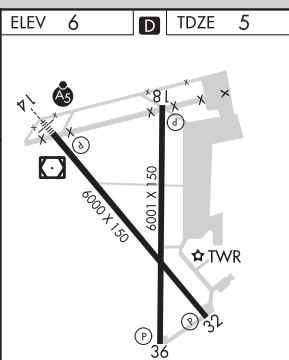
GND CON
118.625

CLNC DEL
135.35
(When twr closed)

UNICOM
123.05



CATEGORY	A	B	C	D	E
S-14	460-1/2	455 (500-1/2)	460-7/8	455 (500-7/8)	
CIRCLING	500-1	494 (500-1)	500-1 1/2 494 (500-1 1/2)	560-2 554 (600-2)	620-2 1/4 614 (700-2 1/4)



REIL Rwy 18, 32, and 36
MIRL Rwy 18-36
HIRL Rwy 14-32

GALVESTON, TEXAS
Amdt 4C 25APR19

29°16'N-94°52'W

SCHOLES INTL AT GALVESTON (GLS)
VOR RWY 14

SC-5, 08 OCT 2020 to 05 NOV 2020

SC-5, 08 OCT 2020 to 05 NOV 2020

KGLS
SCHOLES INTL AT GALVESTON
GALVESTON
TX
NEW CIRCLING AREA
1:100,000

