

Flight Procedures Cover Page	Task Action: Cancellation	Task Type: IAP	Estimated Chart Date: 11/03/2022	APWS Task ID: C2FEEA7CCDDC4DD3A4A02D88B6CEDF29	APWS Project ID: 60925D82D57F475EAEDA49EA0C8AB1F8
Procedure: VOR-A AMDT 3B		Enroute: YES	Specialist: Gonzalez, Adrian		Agreement Number:
Airport ID: KPHL			Airport City: PHILADELPHIA		State: PA
Facility ID:	Facility Type:	Flight Inspection Remark Type:			
<div>Procedure Comments: CANCEL PROCEDURE CHANGE FIX POKEY TO WAYPOINT AND RETAIN PER ATC REQUEST CHART ON VFR TERMINAL AND ENROUTE LOW/HIGH CHARTS PER ATC REQUEST CONTACT: CASIMIR TABAKA, AJV-A430, MANAGER, 405.954.7931</div> <div>Digitally signed by CASIMIR L TABAKA Jun 22, 2022</div> <div>06/21/2022</div> <div>QUALITY 14 CHECKED</div>					

PHILADELPHIA, PENNSYLVANIA

AL-320 (FAA)

21280

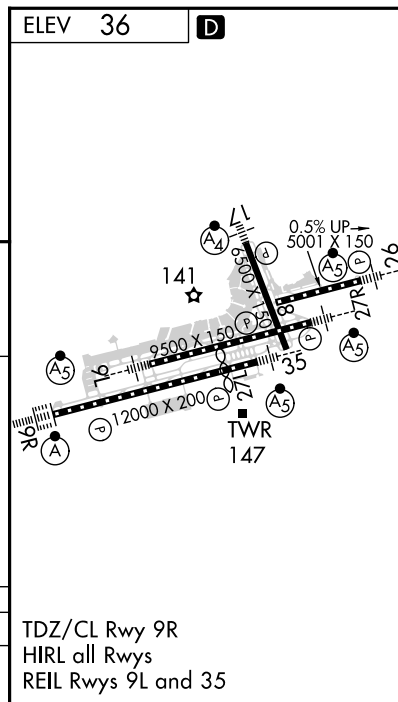
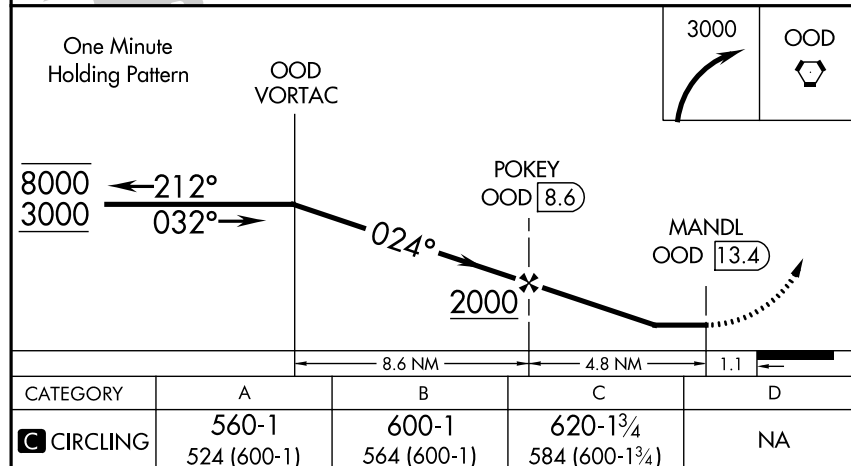
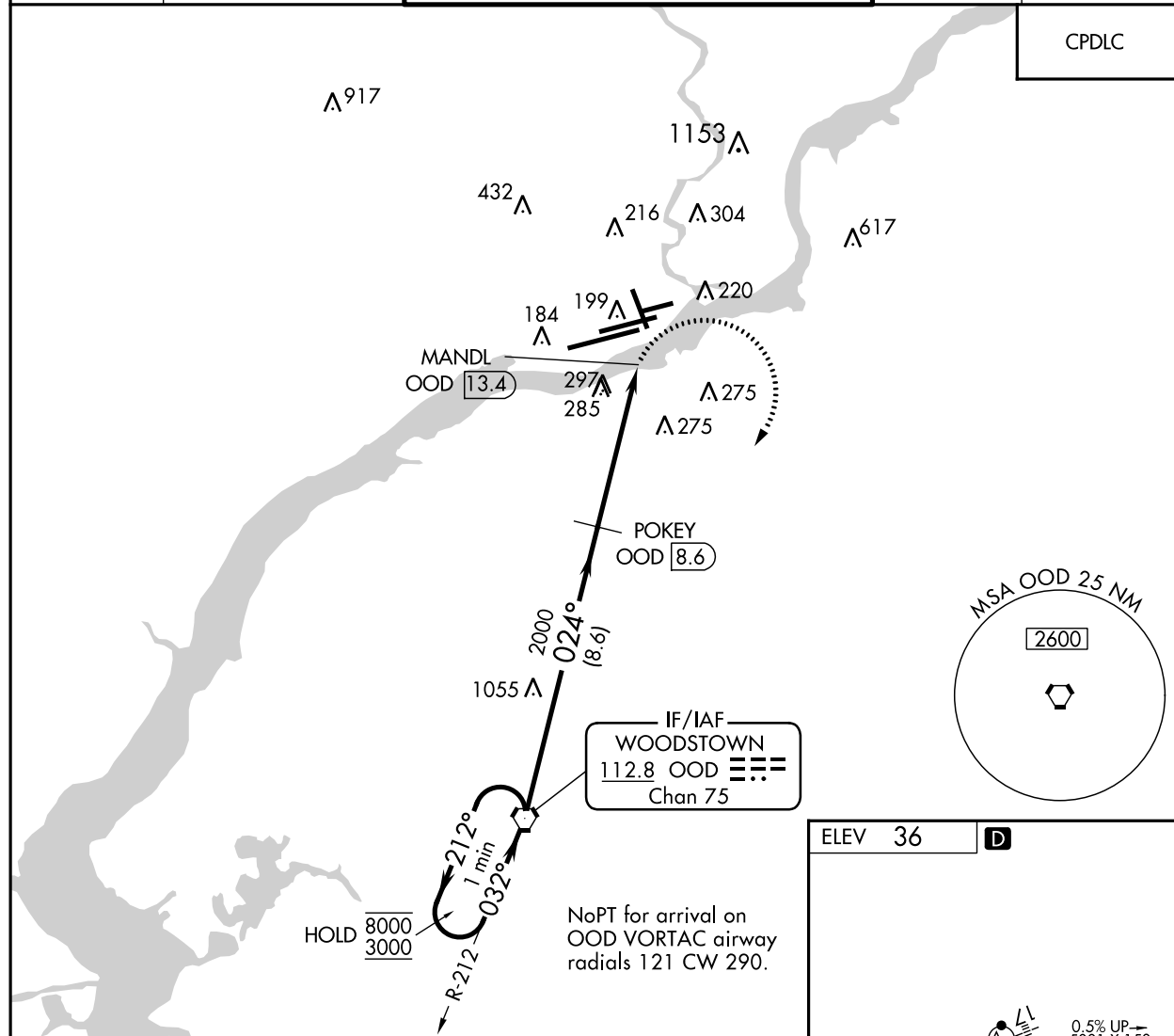
VORTAC OOD 112.8 Chan 75	APP CRS 024°	Rwy Idg TDZE Apt Elev N/A N/A 36
--	------------------------	--

CURRENT

VOR-A

PHILADELPHIA INTL (PHL)

DME required.		MISSED APPROACH: Climbing right turn to 3000 direct OOD VORTAC and hold.	
Procedure NA except for ACFT equipped with suitable RNAV system with GPS.			
D-ATIS ARR 133.4 DEP 135.925	PHILADELPHIA APP CON 124.35 319.15	PHILADELPHIA TOWER 118.5 327.05 (Rwys 9L/27R, 8/26 and 17/35) 135.1 327.05 (Rwy 9R/27L)	GND CON 121.9 348.6
		CLNC DEL 118.85 348.6	



NE-4, 19 MAY 2022 to 16 JUN 2022

NE-4, 19 MAY 2022 to 16 JUN 2022